

INDEX OF SHEETS

FOR INDEX OF SHEETS, SEE SHEET NO. 2

PROJECT LOCATED IN THE CITY OF CHICAGO

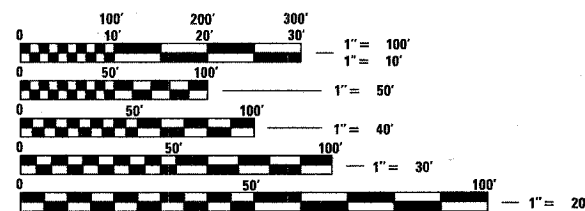
DAN RYAN EXPRESSWAY:	ADT (2010)	DESIGN SPEED	POSTED SPEED
NB I-94 (DAN RYAN)	151,800	60 MPH	55 MPH
NB I-94 (BISHOP FORD)	94,200	60 MPH	55 MPH
NB I-57	58,000	60 MPH	55 MPH
NB HALSTED STREET ENTRANCE RAMP	22,200	45 MPH	40 MPH
NB MICHIGAN AVENUE ENTRANCE RAMP	9,000	45 MPH	40 MPH
NB 95TH STREET ENTRANCE RAMP	10,600	45 MPH	40 MPH
NB 87TH STREET EXIT RAMP	11,600	45 MPH	40 MPH
NB 87TH STREET ENTRANCE RAMP	14,300	45 MPH	40 MPH
NB 83RD STREET C-D ENTRANCE RAMP	8,100	45 MPH	40 MPH
NB 79TH STREET C-D EXIT RAMP	14,000	45 MPH	40 MPH
NB 79TH STREET C-D ENTRANCE RAMP	9,200	45 MPH	40 MPH
NB 76TH STREET C-D EXIT RAMP	7,200	45 MPH	40 MPH
NB 75TH STREET C-D ENTRANCE RAMP	11,300	45 MPH	40 MPH
NB 71ST STREET C-D EXIT RAMP	6,600	45 MPH	40 MPH
EB I-57 TO I-94 CROSS-CONNECTOR	22,800	50 MPH	50 MPH
WB I-94 TO I-57 CROSS-CONNECTOR	24,900	50 MPH	50 MPH

PROJECT DESCRIPTION

THE PROPOSED IMPROVEMENT CONSISTS OF PAVEMENT AND CTA BARRIER WALL RECONSTRUCTION, WIDENING, RAMP TERMINALS, SHOULDERS, AND DRAINAGE MODIFICATIONS ALONG NB I-94 (DAN RYAN & BISHOP FORD) AND NB I-57; AND PAVEMENT RESURFACING ALONG NB I-94 (BISHOP FORD) AND WB I-94 TO I-57 CONNECTOR.

S.N. 016-2852: NORTHBOUND I-57 BRIDGE OVER WESTBOUND I-94 TO I-57 CONNECTOR - RECONSTRUCTION

S.N. 016-0073: NORTHBOUND I-57 OVER SOUTHBOUND BISHOP FORD & CTA TUNNELS - ROOF REPAIRS AND WATERPROOFING



FULL SIZE PLANS HAVE BEEN PREPARED USING STANDARD ENGINEERING SCALES; REDUCED SIZED PLANS WILL NOT CONFORM TO STANDARD SCALES. IN MAKING MEASUREMENTS ON REDUCED PLANS, THE ABOVE SCALES MAY BE USED

DIGGER:
CHICAGO UTILITY ALERT NETWORK
(312) 744-7000

CTA CONTACT:
MARVIN A. WATSON,
GENERAL MANAGER, CONSTRUCTION
(312) 681-3860

CONTRACT NO. 62304

STATE OF ILLINOIS
DEPARTMENT OF TRANSPORTATION
DIVISION OF HIGHWAYS

PROPOSED HIGHWAY PLANS

F.A.I. ROUTE 94 (DAN RYAN EXPRESSWAY)

SECTION (1516.1, 1717, & 1818) R-4

PROJECT NO.: IM-94-3(402)061

I-57 TO 79TH STREET

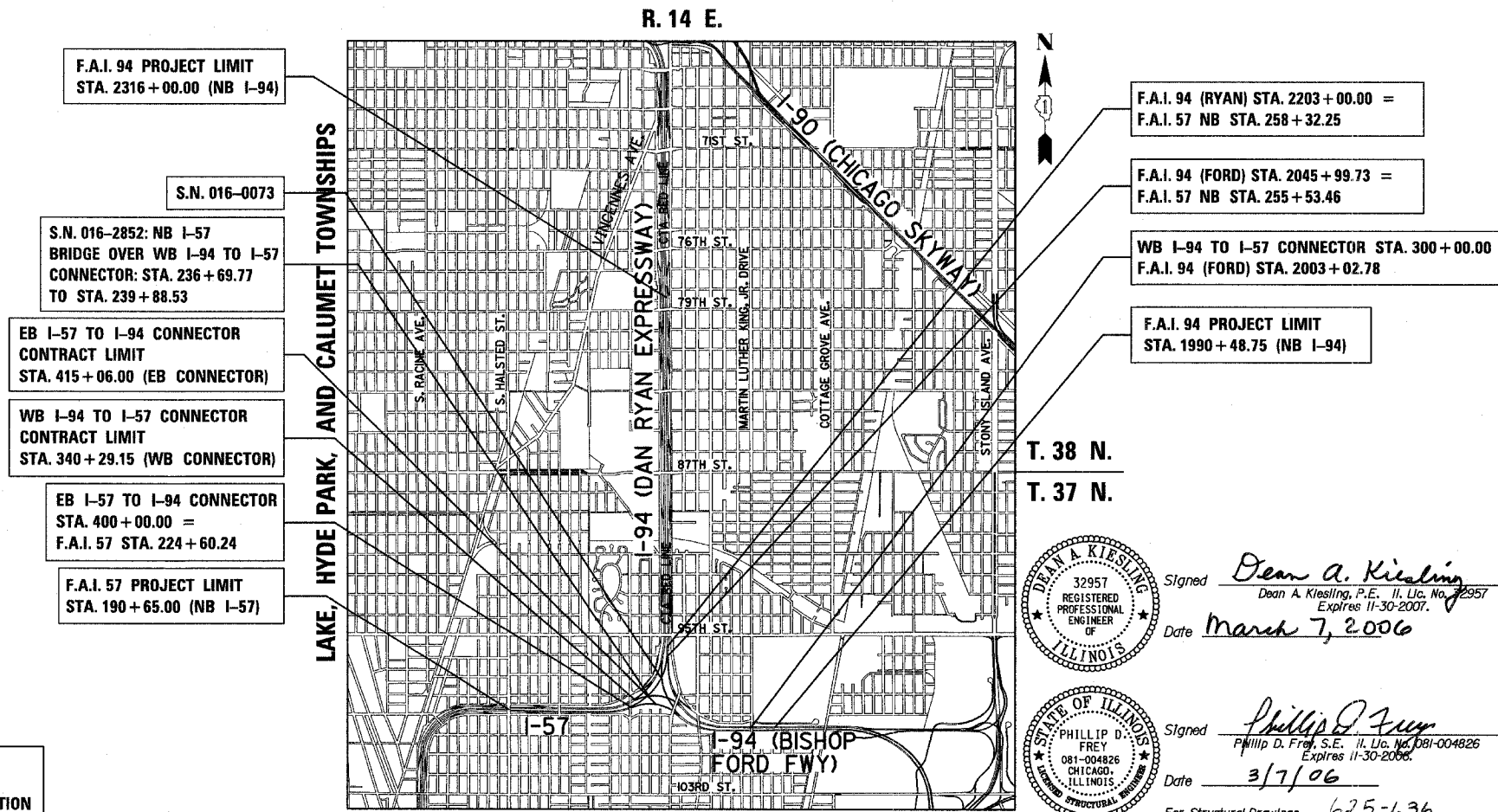
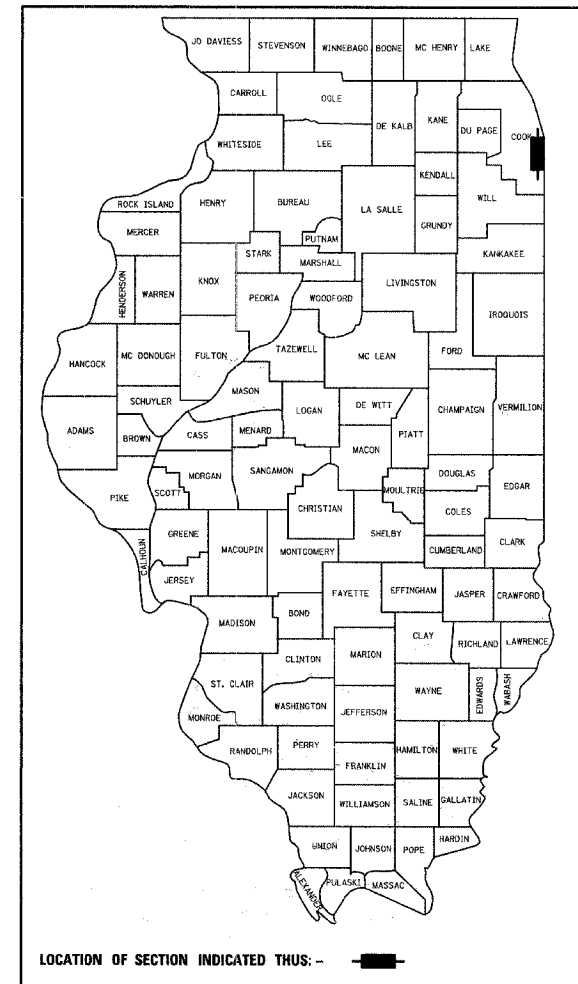
NB LANES 1 - 5, SHOULDERS & CTA BARRIER WALL

COOK COUNTY

C-91-421-01

VOL. 1 OF 2

F.A.I. RTE.	SECTION	COUNTY	TOTAL SHEETS	SHEET NO.
94		COOK	96	1
FED. ROAD DIST. NO.	ILLINOIS	FED. AID PROJECT		
D-91-421-01	(1516.1, 1717, & 1818) R-4	62304		



F.A.I. 94 PROJECT LIMIT STA. 2316+00.00 (NB I-94)

S.N. 016-0073

S.N. 016-2852: NB I-57 BRIDGE OVER WB I-94 TO I-57 CONNECTOR: STA. 236+69.77 TO STA. 239+88.53

EB I-57 TO I-94 CONNECTOR CONTRACT LIMIT STA. 415+06.00 (EB CONNECTOR)

WB I-94 TO I-57 CONNECTOR CONTRACT LIMIT STA. 340+29.15 (WB CONNECTOR)

EB I-57 TO I-94 CONNECTOR STA. 400+00.00 = F.A.I. 57 STA. 224+60.24

F.A.I. 57 PROJECT LIMIT STA. 190+65.00 (NB I-57)

F.A.I. 94 (RYAN) STA. 2203+00.00 = F.A.I. 57 NB STA. 258+32.25

F.A.I. 94 (FORD) STA. 2045+99.73 = F.A.I. 57 NB STA. 255+53.46

WB I-94 TO I-57 CONNECTOR STA. 300+00.00 = F.A.I. 94 (FORD) STA. 2003+02.78

F.A.I. 94 PROJECT LIMIT STA. 1990+48.75 (NB I-94)

LAKE, HYDE PARK, AND CALUMET TOWNSHIPS

T. 38 N.
T. 37 N.

LOCATION MAP

GROSS LENGTH OF PROJECT = 29153.4 FT. = 5.521 MI.
NET LENGTH OF PROJECT = 29153.4 FT. = 5.521 MI.

MAP SCALE: 1" = 1/2 MILE

STATE OF ILLINOIS
DEPARTMENT OF TRANSPORTATION
DIVISION OF HIGHWAYS

SUBMITTED March 8 2006

Diane M. O'Keefe / cm
DISTRICT ENGINEER

ENGINEER OF DESIGN AND ENVIRONMENT

DIRECTOR, DIVISION OF HIGHWAYS

CONTRACT 20

32957 REGISTERED PROFESSIONAL ENGINEER OF ILLINOIS
Signed Dean A. Kiesling
Dean A. Kiesling, P.E., Ill. Lic. No. 72957 Expires 11-30-2007.
Date March 7, 2006

32957 REGISTERED PROFESSIONAL ENGINEER OF ILLINOIS
Signed Phillip D. Frey
Phillip D. Frey, S.E., Ill. Lic. No. 081-004826 Expires 11-30-2006.
Date 3/7/06

062-056151 LICENSED PROFESSIONAL ENGINEER OF ILLINOIS
Signed Thomas Mikolajewski
Thomas Mikolajewski, P.E., Ill. Lic. No. 062-056151 Expires 11-30-2007.
Date March 7, 2006
For Electrical Drawings 478-524

081-064732 LICENSED STRUCTURAL ENGINEER OF ILLINOIS
Signed Bonnie
Date 3/7/06
For Structural Drawings 562-624

TYLIN INTERNATIONAL
PRINTED BY THE AUTHORITY OF THE STATE OF ILLINOIS

DISTRICT ONE DESIGN / PROJECT MANAGER:
BRIAN KUTTAB (847) 705 - 4431

Rev. 5-11-06