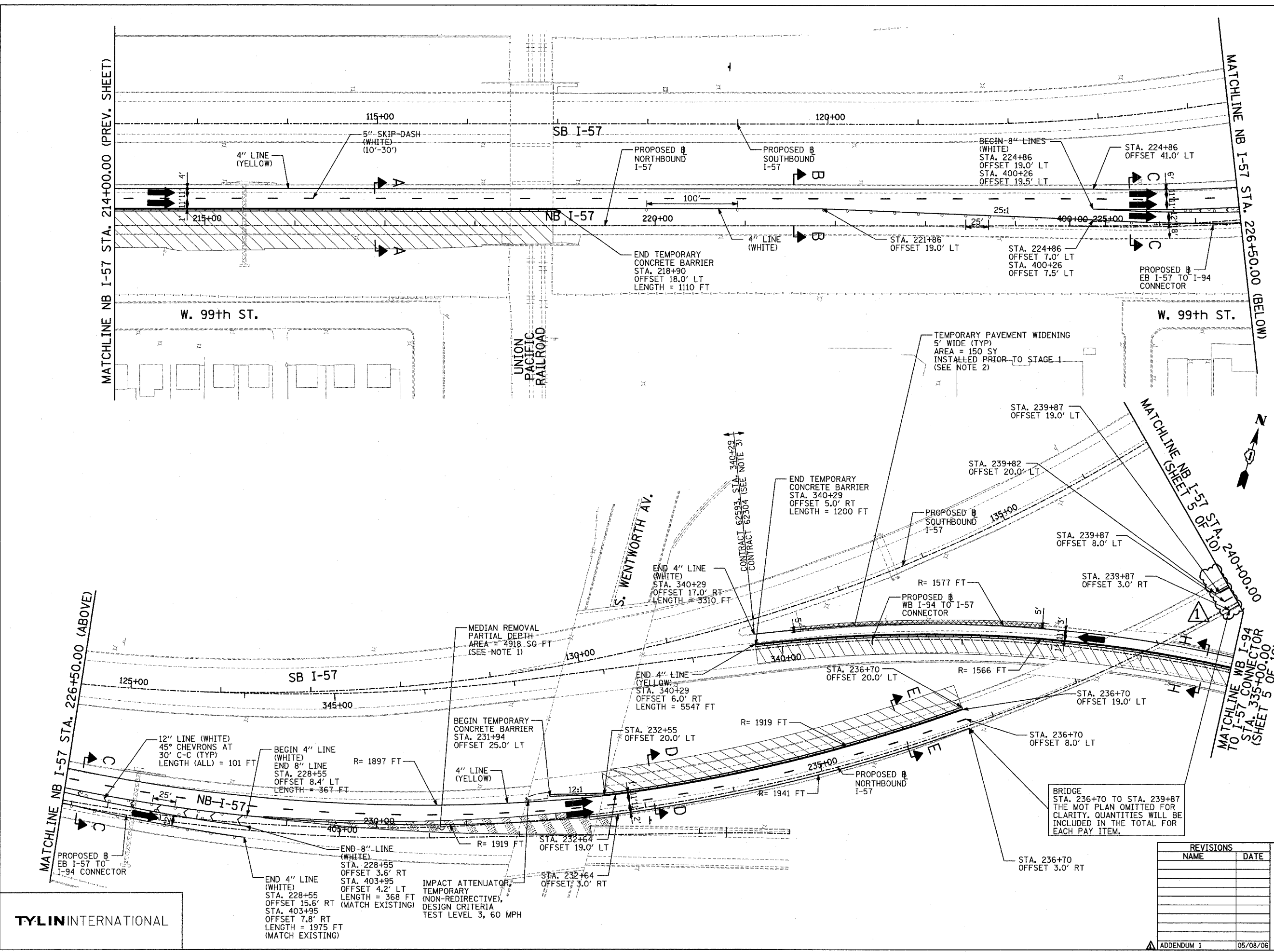
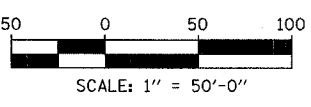
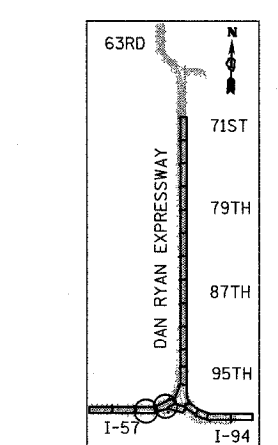


F.A.I. RTE.	SECTION	COUNTY	TOTAL SHEETS	SHEET NO.
94		COOK	916	201

STA. 190+65 (NB I-57) TO STA. 2316+00 (NB RYAN)
 STA. 1990+48 (NB FORD)
 FED. ROAD DIST. NO. ILLINOIS FED. AID PROJECT
 * (1516.1, 1717, & 1818) R-4

- NOTE:**
- CORRUGATED MEDIAN REMOVAL THICKNESS RANGES FROM 1/4" TO 3/4". MEDIAN MUST BE FLUSH WITH THE ADJACENT EXISTING PAVEMENT. MEDIAN REMOVAL MUST BE PERFORMED PRIOR TO THE START OF STAGE 1.
 - SEE DRAINAGE AND UTILITY PLANS FOR LOCATIONS OF DRAINAGE STRUCTURES THAT WILL REQUIRE ADJUSTMENT IN THE AREA OF THE TEMPORARY PAVEMENT WIDENING.
 - MOT AT THE WEST END OF CONTRACT 62304 FOR THE WB CONNECTOR MUST AT ALL TIMES MATCH CONTRACT 62304 TO THE WEST.

- LEGEND:**
- TEMPORARY CONCRETE BARRIER
 - TRAFFIC LANE
 - WORK ZONE
 - BARRICADE, TYPE III
 - DRUM WITH MONO-DIRECTIONAL STEADY BURNING LIGHT
 - ARROW BOARD
 - TEMPORARY PAVEMENT



REVISIONS	
NAME	DATE

ILLINOIS DEPARTMENT OF TRANSPORTATION
 F.A.I. 94 (DAN RYAN EXPRESSWAY)
MAINTENANCE OF TRAFFIC PLAN
 STAGE 1 - NB I-94
 NB I-57 STA. 214+00 TO 240+00
 SHEET 2 OF 10
 SCALE: 1"=50'-0"
 DATE: MARCH 7, 2006
 DRAWN BY: RTM
 CHECKED BY: JDF

TYLIN INTERNATIONAL