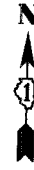


F.A.I. RTE.	SECTION	COUNTY	TOTAL SHEETS	SHEET NO.
94		COOK	916	24
STA. 190+65 (NB I-57) TO STA. 2316+00 (NB RYAN EXPRESSWAY)				
FED. ROAD DIST. NO. ILLINOIS FED. AID PROJECT				
• (1516.1, 1717, & 1818) R-4				

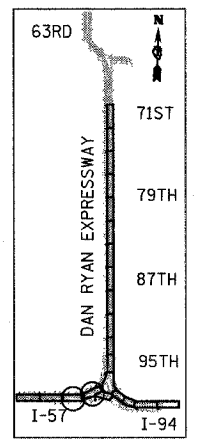


**NOTE:**

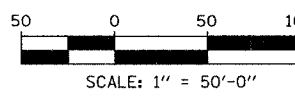
- MOT AT THE WEST END OF CONTRACT 62304 FOR THE WB CONNECTOR MUST AT ALL TIMES MATCH CONTRACT 62593 TO THE WEST.
- ON ALL THE STAGE 3 PLAN SHEETS, CALLOUTS FOR TEMPORARY CONCRETE BARRIER TO THE FRONT FACE OF THE WALL

**LEGEND:**

- TEMPORARY CONCRETE BARRIER
- TRAFFIC LANE
- WORK ZONE
- BARRICADE, TYPE III
- DRUM WITH MONO-DIRECTIONAL STEADY BURNING LIGHT
- ARROW BOARD
- TEMPORARY PAVEMENT



LOCATION MAP

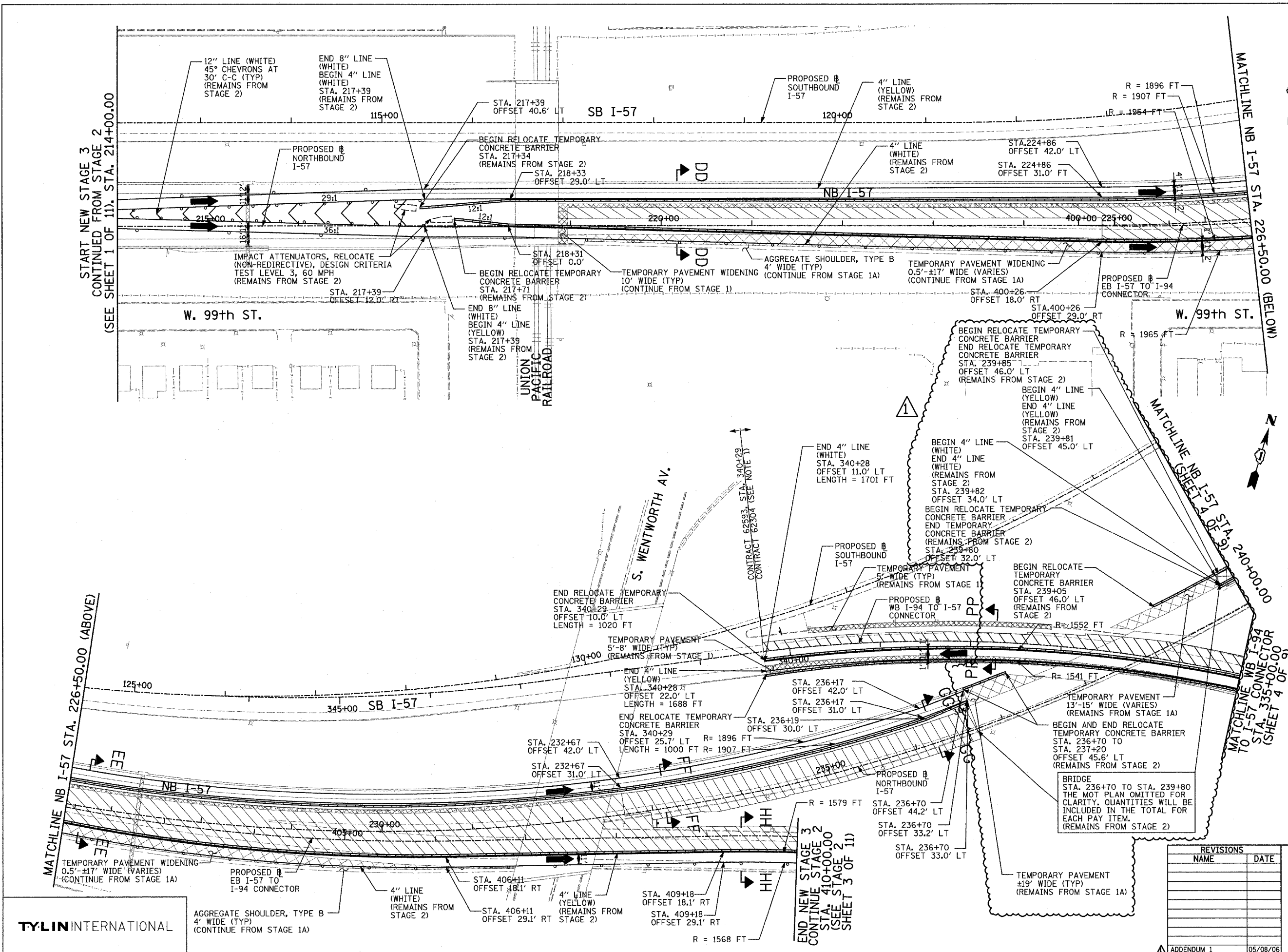


REVISIONS	
NAME	DATE

ILLINOIS DEPARTMENT OF TRANSPORTATION  
**F.A.I. 94 (DAN RYAN EXPRESSWAY)**  
**MAINTENANCE OF TRAFFIC PLAN**  
**STAGE 3 - NB I-94**  
**NB I-57 STA. 214+00 TO 240+00**  
**SHEET 1 OF 9**

SCALE: 1"=50'-0"  
 DATE: MARCH 7, 2006  
 DRAWN BY: RTM  
 CHECKED BY: JDF

ADDENDUM 1 05/08/06



**TYLIN INTERNATIONAL**