

DRAINAGE STRUCTURE SCHEDULE

STRUCTURE NUMBER	STATION	OFFSET	STRUCTURE TYPE		DIA.	FRAME & LID	TOP OF FRAME	N INV.	E INV.	S INV.	W INV.
			MH	CB							
556	326+88.31	16.5 RT		A	4'	T20 F&G	-10.39			-16.22	
557	329+86.01	31.2 LT	A		5'	T1F CL	-15.22		-26.41		-26.41
558	329+74.22	24.3 LT		A	4'	T20 F&G	-15.14		-20.97		-20.97
561	333+35.45	35.8 LT	A		5'	T1F CL	-14.12	-19.81	-24.75		-24.25
562	331+28.74	39.1 LT	A		5'	T1F CL	-16.61	-22.28	-25.79	-22.28(W)	-25.54
563	333+00.00	27.0 RT		C	2'	T1F OL	-14.10				-19.47
564	333+35.02	18.0 RT		A	4'	T20 F&G	-13.07		-19.61	-19.61	
565	333+35.00	26.0 LT		A	4'	T20 F&G	-14.65	-19.77		-19.77	
566	331+36.94	34.2 LT		C	2'	T1F OL	-17.05		-22.25		
567	331+30.14	25.6 RT		C	2'	T1F OL	-14.25			-22.00	
568	331+30.14	18.0 RT		A	4'	T20 F&G	-14.40	-22.03	-22.03		
569	331+20.25	18.0 RT		A	4'	T20 F&G	-14.40		-22.06	-22.06	-22.06
5610	331+10.36	18.0 RT		A	4'	T20 F&G	-14.40				-22.03
5611	331+10.66	26.0 LT		A	4'	T20 F&G	-15.95				-22.19
5612	331+20.84	26.0 LT		A	4'	T20 F&G	-15.95	-22.22	-22.22	-22.22	-22.22
5613	331+31.02	26.0 LT		A	4'	T20 F&G	-15.95		-22.19		
581	239+94.13	56.0 LT	DROP		6'	T1F CL	20.54	10.00	10.48		-14.75
582	238+38.68	63.4 LT	A(2)		6'	T1F CL	-4.49		-16.22		-16.22
583	NOT USED	-	-	-	-	-	-	-	-	-	-
584	NOT USED	-	-	-	-	-	-	-	-	-	-
585	239+94.16	46.0 LT		A	4'	T20 F&G	20.50	10.52			10.52
586	238+63.18	45.9 LT		A	4'	T20 F&G	15.90		11.07		
587	335+65.24	18.0 RT		A	4'	T20 F&G	-10.00			-17.27	
588	335+65.52	26.0 LT		A	4'	T20 F&G	-11.60	-17.43	-17.43		
589	335+25.17	30.0 LT	A		4'	T1F CL	-10.27				-17.59
5810	NOT USED	-	-	-	-	-	-	-	-	-	-
5811	NOT USED	-	-	-	-	-	-	-	-	-	-
5812	NOT USED	-	-	-	-	-	-	-	-	-	-
5813	337+00.00	17.1 RT		C	2'	T1F OL	-7.01		-13.29		
5814	NOT USED	-	-	-	-	-	-	-	-	-	-
5815	NOT USED	-	-	-	-	-	-	-	-	-	-
5816	NOT USED	-	-	-	-	-	-	-	-	-	-
5817	334+17.51	34.7 LT		C	2'	T1F OL	-12.58		-18.58		
5818	334+09.03	31.3 LT	A		4'	T1F CL	-12.61		-23.92		-18.61
591	339+93.06	12.0 RT		A	4'	T20 F&G	2.72			-4.92	
592	339+92.69	26.0 RT		A	4'	T20 F&G	1.06	-5.05		-5.05	
593	338+39.34	52.0 LT	A		4'	T1F CL	5.50		-0.50		-6.50
594	338+72.93	34.9 LT	A		5'	T1F CL	0.96	-7.36	-6.50		-7.36
595	339+92.58	35.9 LT	A		5'	T1F CL	1.08	-5.09	-7.55	-7.55	
596	338+73.62	12.0 RT		A(FS)	4'	T20 F&G	-1.04		-7.20	-7.20	
597	338+73.13	26.0 LT		A(FS)	4'	T20 F&G	-2.82	-7.33	-7.33	-7.33	
598	338+26.65	12.0 RT		A(1)	2'	T20 F&G	-2.87				-7.00
599	338+25.02	26.0 LT		A(1)	2'	T20 F&G	-4.67				-7.14

STORM SEWER SCHEDULE

PIPE NUMBER	UPSTREAM STATION	DOWNSTREAM STATION	TYPE	DIA. (IN)	LENGTH (FT)	SLOPE %	T.B. (CU.YD)
551	329+76.99	329+68.57	2	27	4	0.25	0.0
552	329+68.57	329+71.25	2	27	6	0.44	0.0
553	329+00.00	329+00.07	2	12	40	0.44	40.7
554	329+00.07	329+74.22	2	12	70	0.44	58.8
555	326+79.89	326+82.52	2	12	5	0.44	0.9
556	326+88.31	326+79.89	2	12	36	0.44	9.6
557	329+86.01	329+76.99	2	27	6	0.33	0.0
558	329+74.22	329+86.01	2	12	11	0.44	4.9
561	333+35.45	331+28.74	2	24	196	0.40	0.0
562	331+28.74	329+86.01	2	27	136	0.46	0.0
563	333+00.00	333+35.02	2	12	31	0.44	3.6
564	333+35.02	333+35.00	2	12	36	0.44	5.5
565	333+35.00	333+35.45	2	12	8	0.44	0.4
566	331+36.94	331+28.74	2	12	6	0.44	0.0
567	331+30.14	331+30.14	2	12	7	0.44	1.4
568	331+30.14	331+20.25	2	15	6	0.44	2.1
569	331+20.25	331+20.84	2	15	36	0.44	9.7
5610	331+10.36	331+20.25	2	15	6	0.44	2.1
5611	331+10.66	331+20.84	2	15	6	0.44	1.1
5612	331+20.84	331+28.74	2	15	13	0.44	0.9
5613	331+31.02	331+20.84	2	15	6	0.44	1.1
581	239+94.13	238+38.68	7	18	147	1.00	0.0
582	238+38.68	336+78.82	3	18	8	1.00	0.0
583	NOT USED	-	-	-	-	-	-
584	NOT USED	-	-	-	-	-	-
585	239+94.16	239+94.13	2	12	8	0.44	3.7
586	238+63.18	239+94.16	2	12	125	0.44	38.7
587	335+65.24	335+65.52	2	12	36	0.44	8.1
588	335+65.52	335+25.17	2	12	36	0.44	8.1
589	NOT USED	-	-	-	-	-	-
5810	NOT USED	-	-	-	-	-	-
5811	NOT USED	-	-	-	-	-	-
5812	NOT USED	-	-	-	-	-	-
5813	337+00.00	336+78.82	2	12	21	0.44	0.0
5814	NOT USED	-	-	-	-	-	-
5815	NOT USED	-	-	-	-	-	-
5816	NOT USED	-	-	-	-	-	-
5817	334+17.51	334+09.03	2	12	6	0.44	0.0
5818	334+09.03	333+35.45	2	18	67	0.49	3.3
591	339+93.06	339+92.69	2	12	30	0.44	7.7
592	339+92.69	339+92.58	2	12	8	0.44	0.7
593	338+39.34	338+72.93	2	12	32	0.50	0.0
594	338+72.93	339+92.58	2	24	112	0.40	0.0
595	339+92.58	235+07.03	3	24	52	0.31	0.0
596	338+73.62	338+73.13	2	12	30	0.44	3.0
597	338+73.13	338+72.93	2	12	7	0.44	0.9
598	338+26.65	338+73.62	2	12	45	0.44	3.6
599	338+25.02	338+73.13	2	12	45	0.44	0.0

NOTES:

- INDICATES INLET TYPE A, 2' DIAMETER, TYPE 20 FRAME & GRATE.
- INDICATES MANHOLE, TYPE A, 6' DIAMETER, TYPE 1 FRAME, CLOSED LID, RESTRICTOR PLATE.
- INDICATES SEWER LATERAL WITH 45° CONNECTION. SEE SHEET "DETAIL OF STORM SEWER CONNECTIONS TO SEWER."
- INDICATES SEWER LATERAL WITH 30° CONNECTION. SEE SHEET "DETAIL OF STORM SEWER CONNECTIONS TO SEWER."
- INDICATES SEWER LATERAL WITH 60° CONNECTION. SEE SHEET "DETAIL OF STORM SEWER CONNECTIONS TO SEWER."
- INDICATES MANHOLE TYPE A WITH FLAT SLAB TOP, IDOT STANDARD 602601.
- INDICATES CATCH BASIN REQUIRING TEMPORARY SOIL RETENTION SYSTEM WITH INSTALLATION.
- ALL STRUCTURE ELEVATIONS IN RESURFACED AREAS COME FROM AERIAL SURVEY AND SHOULD BE VERIFIED IN THE FIELD AND ADJUSTED TO MATCH EXISTING CONDITIONS.

CASING SIZES

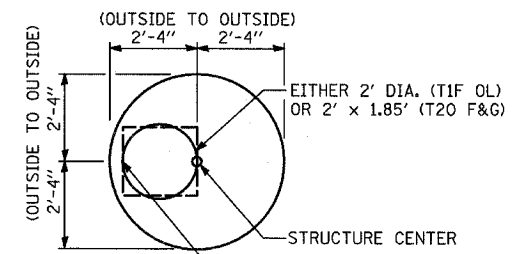
PIPE SIZE	CASING SIZE (OD)*	CASING WALL THICKNESS
12"	30"	0.500"
24"	42"	0.625"
30"	48"	0.688"
36"	48"	0.688"

*ALL STEEL CASING SHALL MEET OR EXCEED ASTM A-139, GRADE B.
SEE THE DRAINAGE & UTILITY PLANS FOR LOCATION OF ALL STRUCTURES.

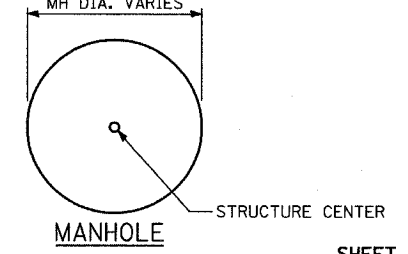
CATCH BASIN STATIONS ARE MEASURED TO CENTER OF STRUCTURE.

CATCH BASIN OFFSETS ARE MEASURED TO FLOWLINE OF CASING. (SEE BELOW)

FLOWLINE OF CASING IS LOCATED AT C OF STRUCTURE FOR CATCH BASINS LOCATED IN SWALE AND GORE AREAS.



MANHOLE STATIONS AND OFFSETS ARE MEASURED TO CENTER OF STRUCTURE. (SEE BELOW)



TYLIN INTERNATIONAL

REVISIONS	
NAME	DATE

ILLINOIS DEPARTMENT OF TRANSPORTATION
F.A.I. 94 (DAN RYAN EXPRESSWAY)
DRAINAGE STRUCTURE SCHEDULE