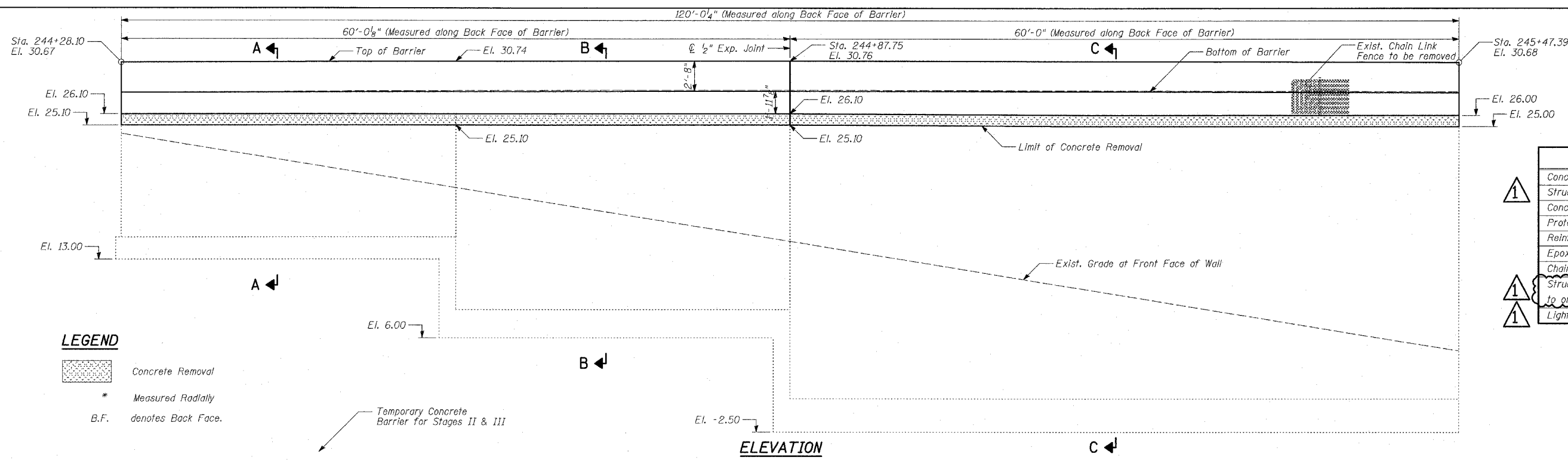


F.A.I. RTE.	SECTION	COUNTY	TOTAL SHEETS	SHEET NO.
94		COOK	916	633
STA. 190+65 (NB I-57) TO STA. 2316+00 (NB RYAN)				
FED. ROAD DIST. NO. ILLINOIS FED. AID PROJECT				
• (1516.1, 1717, & 1818) R-4				
62304				

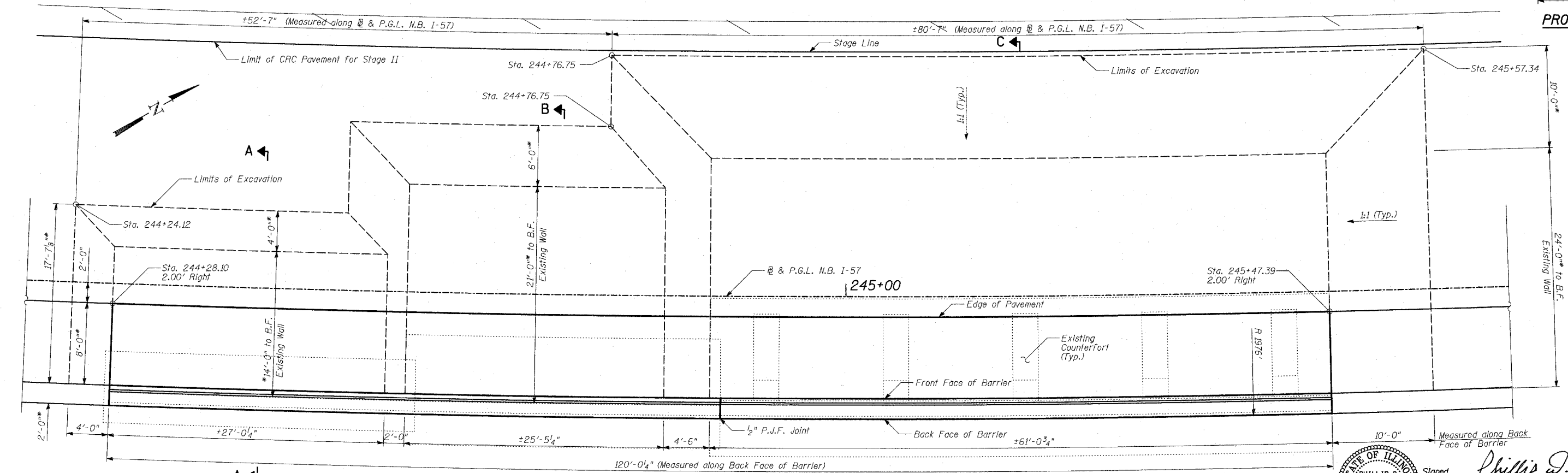
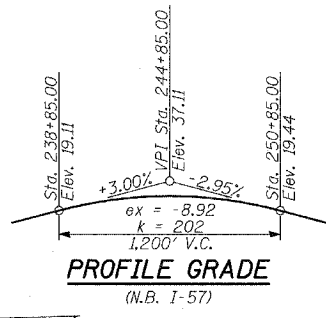


**TOTAL BILL OF MATERIAL**

ITEM	UNIT	TOTAL
Concrete Removal	CU YD	5
Structure Excavation	CU YD	861
Concrete Structures	CU YD	85
Protective Coat	SQ YD	241
Reinforcement Bars, Epoxy Coated	POUND	16,800
Epoxy Crack Sealing	FOOT	100
Chain Link Fence Removal	FOOT	120
Structural Repair of Concrete (Depth Equal to or less than 5 in.)	SQ FT	10
Lightweight Cellular Concrete Fill	CU YD	968

**LEGEND**

- Concrete Removal
- \* Measured Radially
- B.F. denotes Back Face.



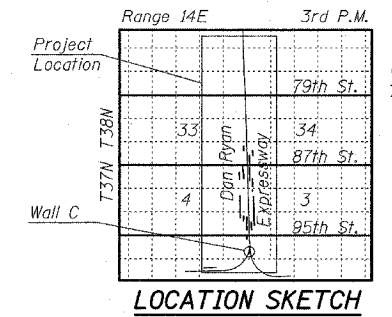
**GENERAL NOTES:**

1. Reinforcement bars shall conform to the requirements of AASHTO M31 or M322 Grade 60.
2. Protective Coat shall be applied to exposed surfaces of the concrete facing. See Section on D-D Sheet 3 of 4.
3. Plan dimensions and details relative to existing structure have been taken from existing plans and are subject to nominal construction variations. It shall be the Contractor's responsibility to verify such dimensions and details in the field and make necessary approved adjustments prior to construction or ordering of materials. Such variations shall not be cause for additional compensation for a change in the scope of the work; however, the Contractor will be paid for the quantity actually furnished at the unit price bid for the work.
4. Existing utilities in conflict with retaining wall reconstruction shall be abandoned or relocated according to directions given on the roadway plans.
5. All elevations shown are based on the Chicago City Datum of 0.00, which is 579.19 feet above mean tide New York. (NAVD 88)
6. It is the Contractor's responsibility to locate the existing Counterforts. Any repairs due to the damage of the Counterforts during excavation shall be the Contractor's responsibility.

**DESIGN SPECIFICATION**

AASHTO 2002 Standard Specifications for Highway Bridges

**DESIGN STRESSES**  
FIELD UNITS  
f'c = 3,500 psi  
fy = 60,000 psi (Reinforcement)



Signed: *Phillip D. Frey*  
Date: 3/7/06

PHILLIP D. FREY  
081-004826  
CHICAGO, ILLINOIS  
REGISTERED PROFESSIONAL ENGINEER

ILLINOIS DEPARTMENT OF TRANSPORTATION  
F.A.I. 94 (DAN RYAN EXPRESSWAY)

WALL C MODIFICATIONS  
GENERAL PLAN AND ELEVATION  
STA. 244+28.10 TO STA. 245+47.39

S.N. DESIGNED BY: TD, DJR  
SCALE: DRAWN BY: DJR  
DATE: MARCH 7, 2006 CHECKED BY: MI

REVISIONS	
NAME	DATE

**TYLIN INTERNATIONAL**