

**INDEX OF SHEETS**

FOR INDEX OF SHEETS, SEE SHEET NO. 2

PROJECT LOCATED IN THE CITY OF CHICAGO

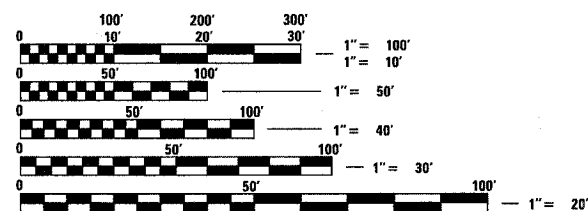
DAN RYAN EXPRESSWAY:	ADT (2010)	DESIGN SPEED	POSTED SPEED
NB I-94 (DAN RYAN)	151,800	60 MPH	55 MPH
NB I-94 (BISHOP FORD)	94,200	60 MPH	55 MPH
NB I-57	58,000	60 MPH	55 MPH
NB HALSTED STREET ENTRANCE RAMP	22,200	45 MPH	40 MPH
NB MICHIGAN AVENUE ENTRANCE RAMP	9,000	45 MPH	40 MPH
NB 95TH STREET ENTRANCE RAMP	10,600	45 MPH	40 MPH
NB 87TH STREET EXIT RAMP	11,600	45 MPH	40 MPH
NB 87TH STREET ENTRANCE RAMP	14,300	45 MPH	40 MPH
NB 83RD STREET C-D ENTRANCE RAMP	8,100	45 MPH	40 MPH
NB 79TH STREET C-D EXIT RAMP	14,000	45 MPH	40 MPH
NB 79TH STREET C-D ENTRANCE RAMP	9,200	45 MPH	40 MPH
NB 76TH STREET C-D EXIT RAMP	7,200	45 MPH	40 MPH
NB 75TH STREET C-D ENTRANCE RAMP	11,300	45 MPH	40 MPH
NB 71ST STREET C-D EXIT RAMP	6,600	45 MPH	40 MPH
EB I-57 TO I-94 CROSS-CONNECTOR	22,800	50 MPH	50 MPH
WB I-94 TO I-57 CROSS-CONNECTOR	24,900	50 MPH	50 MPH

**PROJECT DESCRIPTION**

THE PROPOSED IMPROVEMENT CONSISTS OF PAVEMENT AND CTA BARRIER WALL RECONSTRUCTION, WIDENING, RAMP TERMINALS, SHOULDERS, AND DRAINAGE MODIFICATIONS ALONG NB I-94 (DAN RYAN & BISHOP FORD) AND NB I-57; AND PAVEMENT RESURFACING ALONG NB I-94 (BISHOP FORD) AND WB I-94 TO I-57 CONNECTOR.

S.N. 016-2852: NORTHBOUND I-57 BRIDGE OVER WESTBOUND I-94 TO I-57 CONNECTOR - RECONSTRUCTION

S.N. 016-0073: NORTHBOUND I-57 OVER SOUTHBOUND BISHOP FORD & CTA TUNNELS - ROOF REPAIRS AND WATERPROOFING



FULL SIZE PLANS HAVE BEEN PREPARED USING STANDARD ENGINEERING SCALES; REDUCED SIZED PLANS WILL NOT CONFORM TO STANDARD SCALES. IN MAKING MEASUREMENTS ON REDUCED PLANS, THE ABOVE SCALES MAY BE USED

DIGGER:  
CHICAGO UTILITY ALERT NETWORK  
(312) 744-7000

CTA CONTACT:  
MARVIN A. WATSON,  
GENERAL MANAGER, CONSTRUCTION  
(312) 681-3860

**CONTRACT NO. 62304**

STATE OF ILLINOIS  
DEPARTMENT OF TRANSPORTATION  
DIVISION OF HIGHWAYS

**PROPOSED HIGHWAY PLANS**

F.A.I. ROUTE 94 (DAN RYAN EXPRESSWAY)

SECTION (1516.1, 1717, & 1818) R-4

PROJECT NO.: IM-94-3(402)061

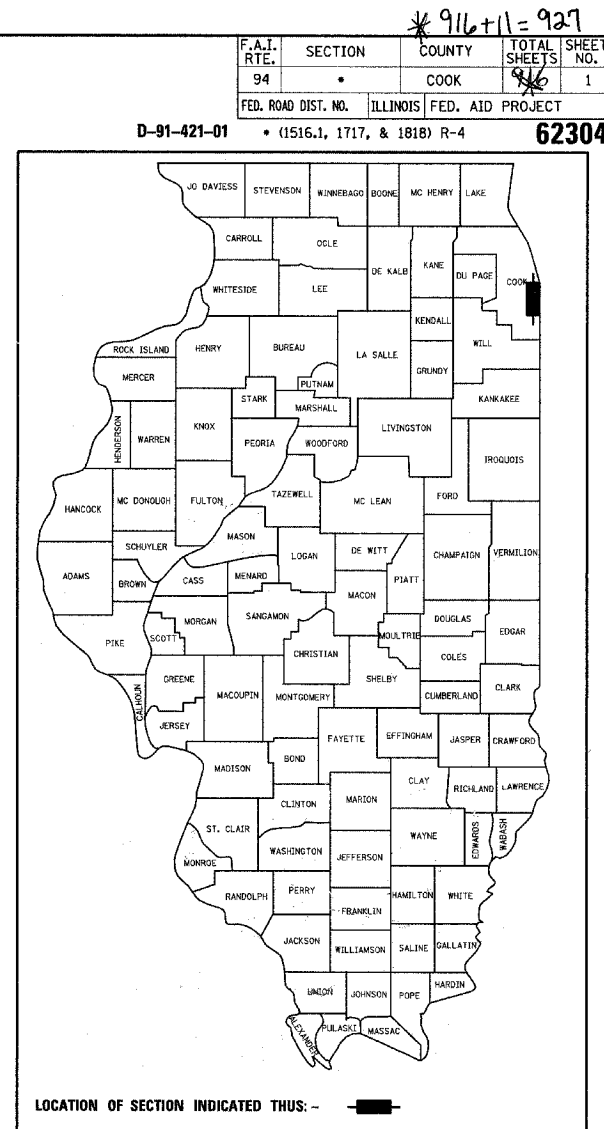
I-57 TO 79TH STREET

NB LANES 1 - 5, SHOULDERS & CTA BARRIER WALL

COOK COUNTY

C-91-421-01

**VOL. 1 OF 2**



STATE OF ILLINOIS  
DEPARTMENT OF TRANSPORTATION  
DIVISION OF HIGHWAYS

SUBMITTED March 8 2006

Diane M. O'Keefe / cm  
DISTRICT ENGINEER

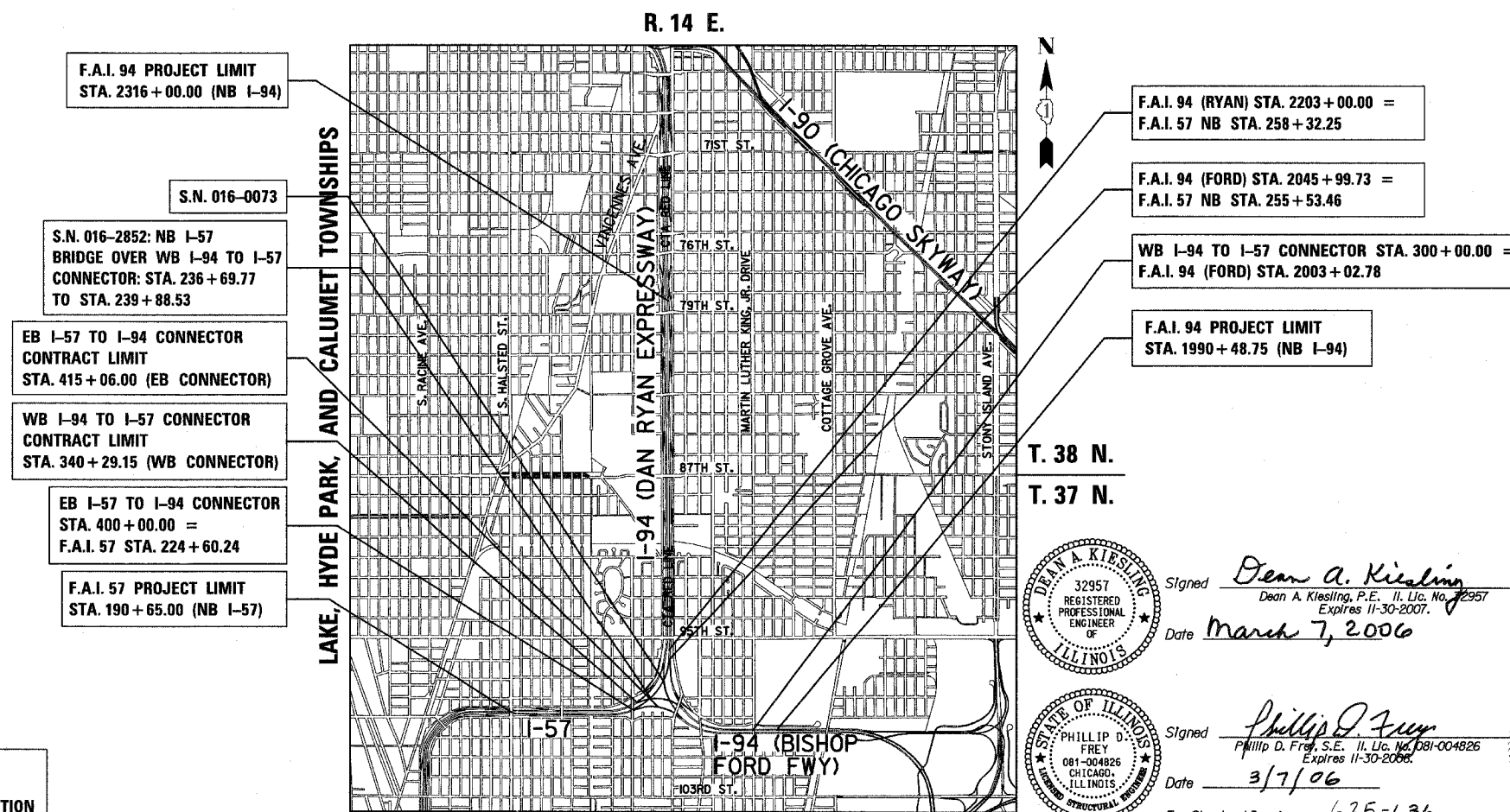
20

ENGINEER OF DESIGN AND ENVIRONMENT

20

DIRECTOR, DIVISION OF HIGHWAYS

**CONTRACT 20**



F.A.I. 94 PROJECT LIMIT  
STA. 2316+00.00 (NB I-94)

S.N. 016-0073

S.N. 016-2852: NB I-57  
BRIDGE OVER WB I-94 TO I-57  
CONNECTOR: STA. 236+69.77  
TO STA. 239+88.53

EB I-57 TO I-94 CONNECTOR  
CONTRACT LIMIT  
STA. 415+06.00 (EB CONNECTOR)

WB I-94 TO I-57 CONNECTOR  
CONTRACT LIMIT  
STA. 340+29.15 (WB CONNECTOR)

EB I-57 TO I-94 CONNECTOR  
STA. 400+00.00 =  
F.A.I. 57 STA. 224+60.24

F.A.I. 57 PROJECT LIMIT  
STA. 190+65.00 (NB I-57)

F.A.I. 94 (RYAN) STA. 2203+00.00 =  
F.A.I. 57 NB STA. 258+32.25

F.A.I. 94 (FORD) STA. 2045+99.73 =  
F.A.I. 57 NB STA. 255+53.46

WB I-94 TO I-57 CONNECTOR STA. 300+00.00 =  
F.A.I. 94 (FORD) STA. 2003+02.78

F.A.I. 94 PROJECT LIMIT  
STA. 1990+48.75 (NB I-94)

Signed Dean A. Kiesling  
Dean A. Kiesling, P.E., Il. Lic. No. 72957  
Expires 11-30-2007.  
Date March 7, 2006

Signed Phillip D. Frey  
Phillip D. Frey, S.E., Il. Lic. No. 081-004826  
Expires 11-30-2006.  
Date 3/7/06

Signed Thomas Mikolajewski  
Thomas Mikolajewski, P.E., Il. Lic. No. 062-056151  
Expires 11-30-2007.  
Date March 7, 2006  
For Electrical Drawings 478-524

Signed Bryan T. Danley  
Bryan T. Danley, S.E., Il. Lic. No. 081-004782  
Chicago, Illinois  
Expires 11/30/06  
Date 3/7/06  
For Structural Drawings 562-624

LOCATION MAP

GROSS LENGTH OF PROJECT = 29153.4 FT. = 5.521 MI.  
NET LENGTH OF PROJECT = 29153.4 FT. = 5.521 MI.

DISTRICT ONE DESIGN / PROJECT MANAGER:  
BRIAN KUTTAB (847) 705 - 4431

**TYLIN INTERNATIONAL**  
PRINTED BY THE AUTHORITY OF THE STATE OF ILLINOIS