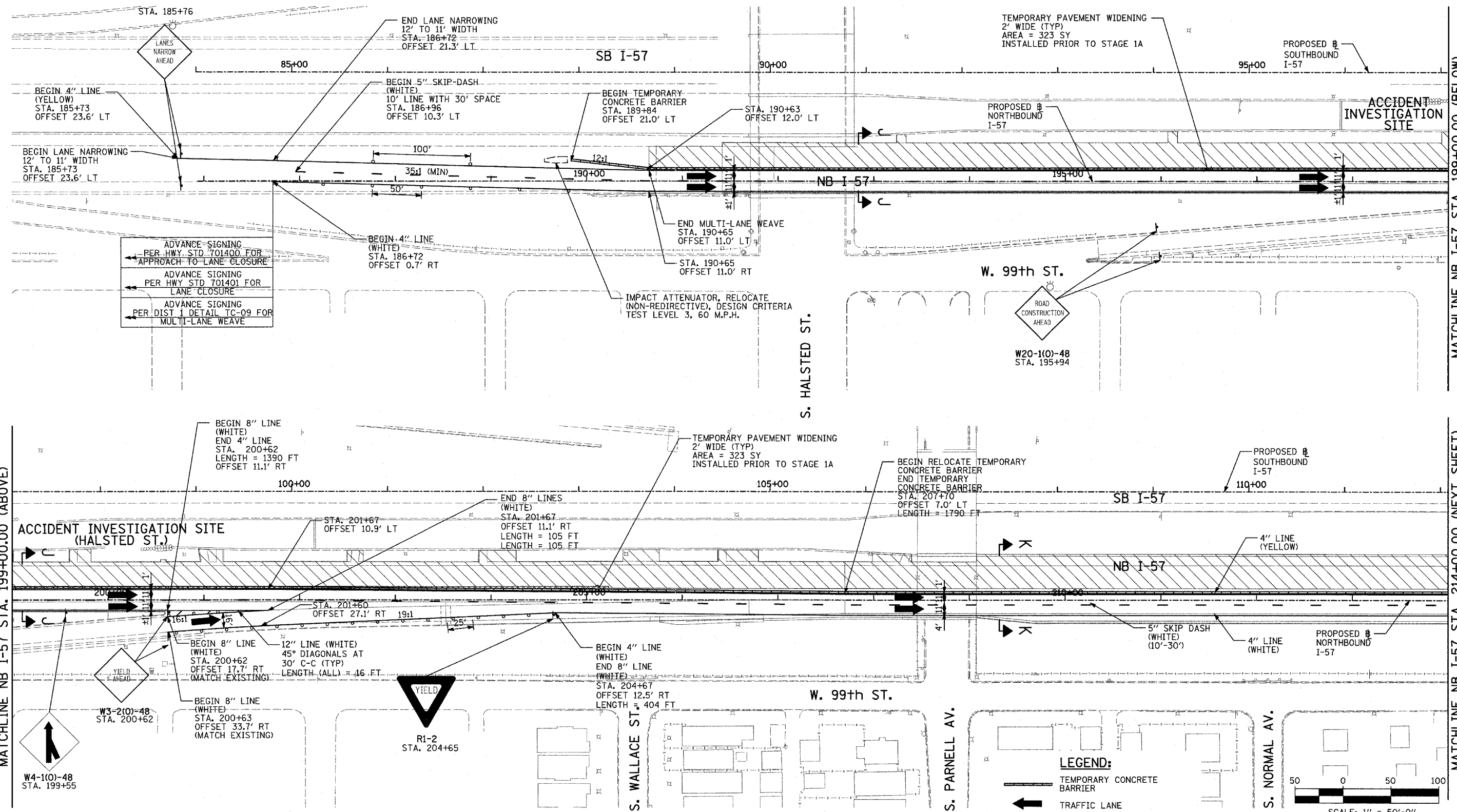


F.A.I. RTE.	SECTION	COUNTY	TOTAL SHEETS	SHEET NO.
94		COOK	916	210
STA. 190+65 (NB I-57) TO STA. 2316+00 (NB RYAN)				
STA. 1990+48 (NB FORD)				
FED. ROAD DIST. NO. ILLINOIS FED. AID PROJECT				
(1516.1, 1717, & 1818) R-4				

3/3/2006 3:35:26 PM



ADVANCE SIGNING  
PER HWY. STD. 701400 FOR  
APPROACH TO LANE CLOSURE

ADVANCE SIGNING  
PER HWY. STD. 701401 FOR  
LANE CLOSURE

ADVANCE SIGNING  
PER DIST. 1 DETAIL TC-09 FOR  
MULTI-LANE WEAVE

IMPACT ATTENUATOR, RELOCATE  
(NON-REDIRECTIVE), DESIGN CRITERIA  
TEST LEVEL 3, 60 M.P.H.

ROAD CONSTRUCTION AHEAD

W20-1(O)-48  
STA. 195+94

ACCIDENT INVESTIGATION SITE  
(HALSTED ST.)

YIELD AHEAD

W3-2(O)-48  
STA. 200+62

YIELD

R1-2  
STA. 204+65

**LEGEND:**

- TEMPORARY CONCRETE BARRIER
- TRAFFIC LANE
- WORK ZONE
- BARRICADE, TYPE III
- DRUM WITH MONO-DIRECTIONAL STEADY BURNING LIGHT
- ARROW BOARD
- TEMPORARY PAVEMENT

**NOTE:**  
ON ALL THE STAGE 1A PLAN SHEETS,  
CALLOUTS FOR TEMPORARY CONCRETE  
BARRIER ARE TO THE FRONT FACE  
OF THE WALL.

REVISIONS	
NAME	DATE

ILLINOIS DEPARTMENT OF TRANSPORTATION  
F.A.I. 94 (DAN RYAN EXPRESSWAY)  
MAINTENANCE OF TRAFFIC PLAN  
STAGE 1A - NB I-94  
NB I-57 STA. 184+00 TO 214+00  
SHEET 1 OF 8

SCALE: 1"=50'-0"  
DATE: MARCH 7, 2006

DRAWN BY: RTM  
CHECKED BY: JDF

**TYLIN** INTERNATIONAL

