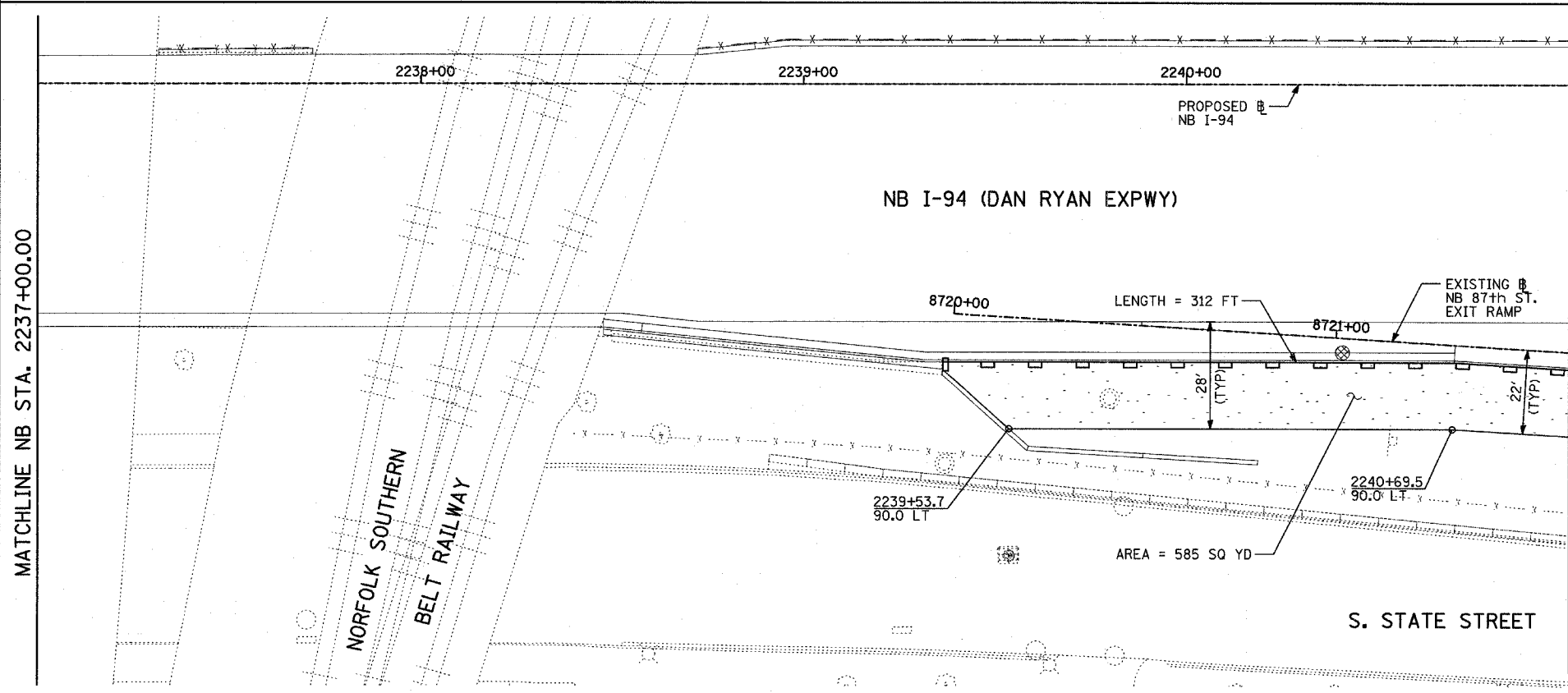
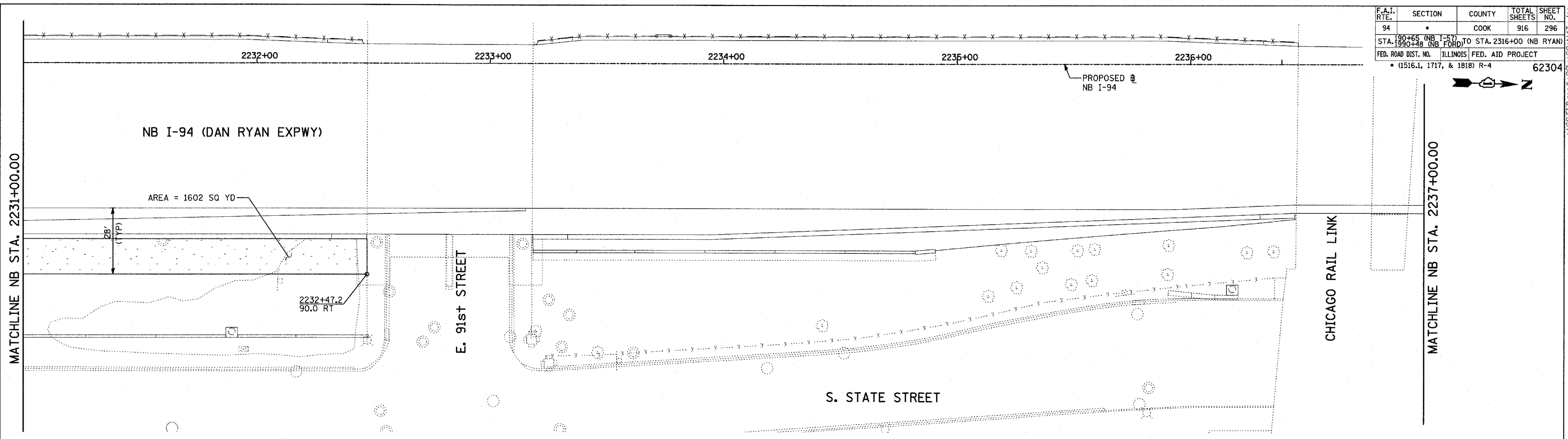
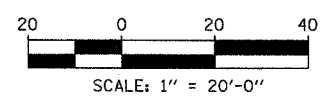
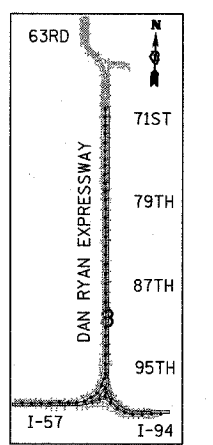


F.A.I. RTE.	SECTION	COUNTY	TOTAL SHEETS	SHEET NO.
94		COOK	916	296
STA. 190+65 (NB I-57) TO STA. 2316+00 (NB RYAN)				
FED. ROAD DIST. NO. ILLINOIS FED. AID PROJECT				
* (1516.1, 1717, & 1818) R-4 62304				



- LEGEND:**
- TEMPORARY EROSION CONTROL SEEDING
  - SEDIMENT CONTROL, SILT FENCE
  - INLET FILTER, TO BE INSTALLED IN OFF PROJECT DRAINAGE STRUCTURES ACCEPTING STORMWATER RUNOFF
  - TEMPORARY FENCE
  - TEMPORARY DITCH CHECK
  - PROPOSED DRAINAGE SWALE (SEE DRAINAGE PLANS)
  - EXISTING DRAINAGE SWALE
  - TEMPORARY FENCE FOR TREE PROTECTION (15 FEET PER SIDE = 60 FEET TOTAL)



REVISIONS	
NAME	DATE

ILLINOIS DEPARTMENT OF TRANSPORTATION  
 F.A.I. 94 (DAN RYAN EXPRESSWAY)  
 EROSION CONTROL PLAN  
 NB I-94 (DAN RYAN EXPRESSWAY)  
 STA. 2231+00.00 TO 2241+00.00  
 (SHEET 14 OF 28)  
 SCALE: 1"=20'  
 DATE: MARCH 7, 2006  
 DRAWN BY: JJS  
 CHECKED BY: MPG

TOTAL NUMBER OF INLET FILTERS THIS SHEET: 1  
 TOTAL NUMBER OF TEMPORARY DITCH CHECKS THIS SHEET: 0  
 TOTAL NUMBER OF TREES TO BE PROTECTED THIS SHEET: 0

**TYLIN** INTERNATIONAL

A:\0237\3\road\620\eg2006\0614\3.dwg 03/03/2006 09:42:47 AM