

**INDEX OF SHEETS**

FOR INDEX OF SHEETS, SEE SHEET NO. 2

PROJECT LOCATED IN THE CITY OF CHICAGO

DAN RYAN EXPRESSWAY:	ADT (2010)	DESIGN SPEED	POSTED SPEED
NB I-94 (DAN RYAN)	151,800	60 MPH	55 MPH
NB I-94 (BISHOP FORD)	94,200	60 MPH	55 MPH
NB I-57	58,000	60 MPH	55 MPH
NB HALSTED STREET ENTRANCE RAMP	22,200	45 MPH	40 MPH
NB MICHIGAN AVENUE ENTRANCE RAMP	9,000	45 MPH	40 MPH
NB 95TH STREET ENTRANCE RAMP	10,600	45 MPH	40 MPH
NB 87TH STREET EXIT RAMP	11,600	45 MPH	40 MPH
NB 87TH STREET ENTRANCE RAMP	14,300	45 MPH	40 MPH
NB 83RD STREET C-D ENTRANCE RAMP	8,100	45 MPH	40 MPH
NB 79TH STREET C-D EXIT RAMP	14,000	45 MPH	40 MPH
NB 79TH STREET C-D ENTRANCE RAMP	9,200	45 MPH	40 MPH
NB 76TH STREET C-D EXIT RAMP	7,200	45 MPH	40 MPH
NB 75TH STREET C-D ENTRANCE RAMP	11,300	45 MPH	40 MPH
NB 71ST STREET C-D EXIT RAMP	6,600	45 MPH	40 MPH
EB I-57 TO I-94 CROSS-CONNECTOR	22,800	50 MPH	50 MPH
WB I-94 TO I-57 CROSS-CONNECTOR	24,900	50 MPH	50 MPH

**STATE OF ILLINOIS  
DEPARTMENT OF TRANSPORTATION  
DIVISION OF HIGHWAYS**

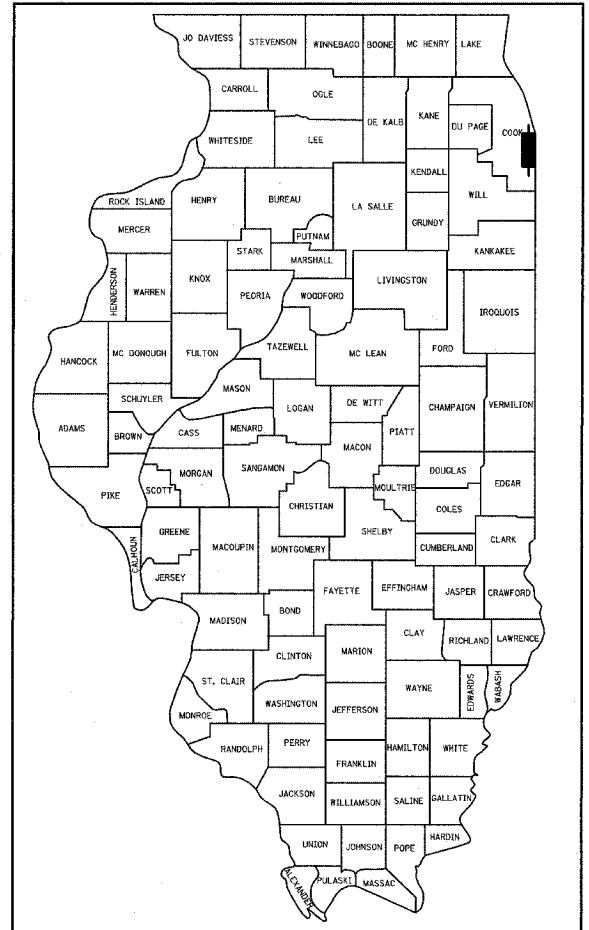
**PROPOSED HIGHWAY PLANS**

**F.A.I. ROUTE 94 (DAN RYAN EXPRESSWAY)  
SECTION (1516.1, 1717, & 1818) R-4**

**PROJECT NO.:  
I-57 TO 79TH STREET  
NB LANES 1 - 5, SHOULDERS & CTA BARRIER WALL  
COOK COUNTY  
C-91-421-01**

**VOL. 2 OF 2**

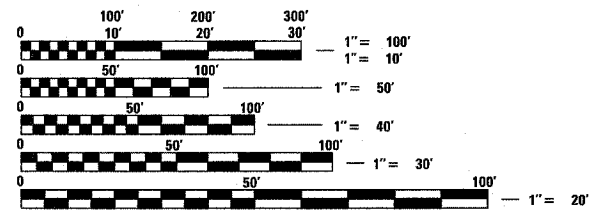
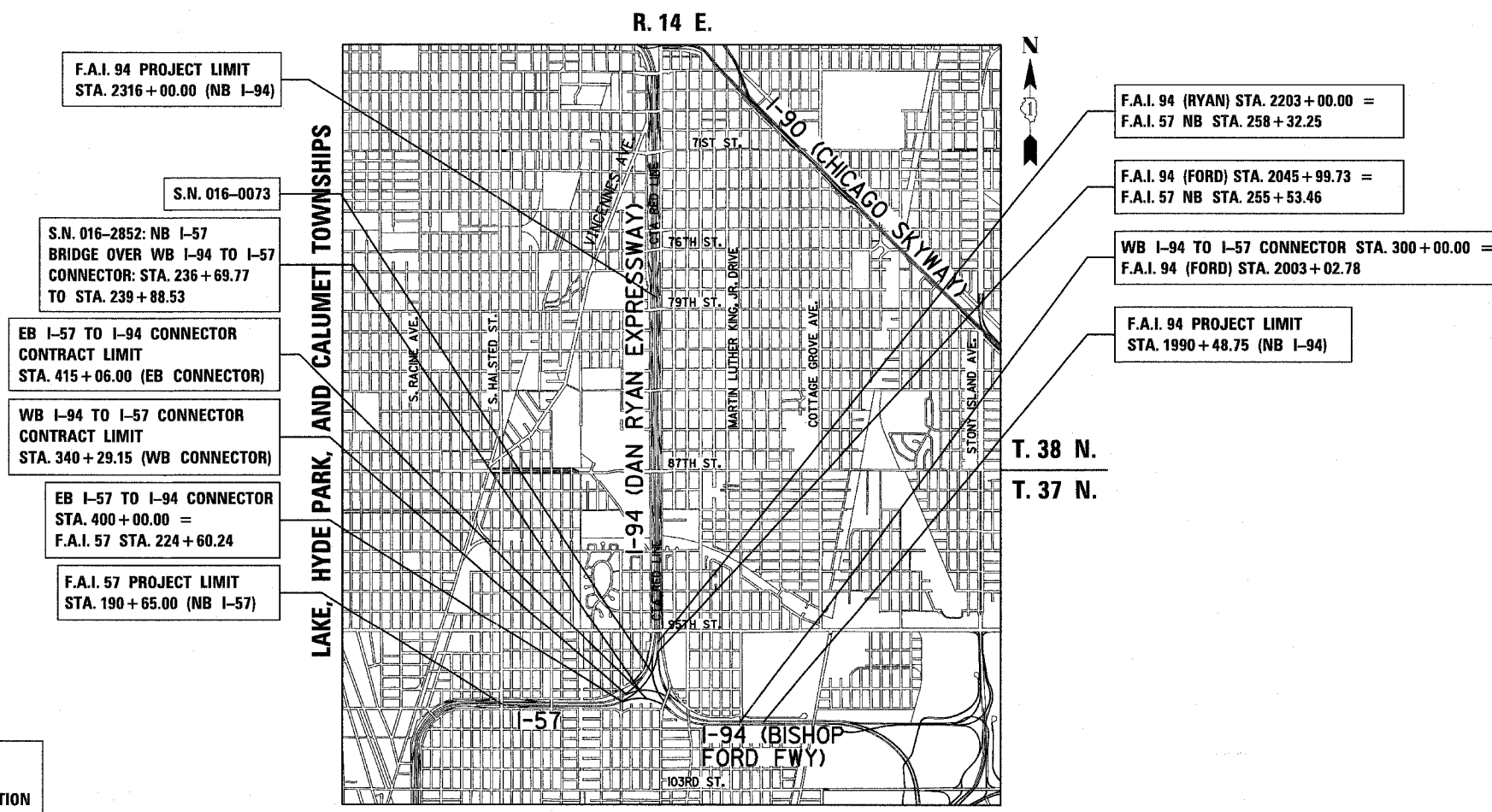
F.A.I. RTE.	SECTION	COUNTY	TOTAL SHEETS	SHEET NO.
94	*	COOK	916	477A
FED. ROAD DIST. NO.	ILLINOIS FED. AID PROJECT			
D-91-421-01	(1516.1, 1717, & 1818) R-4		62304	



**PROJECT DESCRIPTION**

THE PROPOSED IMPROVEMENT CONSISTS OF PAVEMENT AND CTA BARRIER WALL RECONSTRUCTION, WIDENING, RAMP TERMINALS, SHOULDERS, AND DRAINAGE MODIFICATIONS ALONG NB I-94 (DAN RYAN & BISHOP FORD) AND NB I-57; AND PAVEMENT RESURFACING ALONG NB I-94 (BISHOP FORD) AND WB I-94 TO I-57 CONNECTOR.

- S.N. 016-2852: NORTHBOUND I-57 BRIDGE OVER WESTBOUND I-94 TO I-57 CONNECTOR - RECONSTRUCTION
- S.N. 016-0073: NORTHBOUND I-57 OVER SOUTHBOUND BISHOP FORD & CTA TUNNELS - ROOF REPAIRS AND WATERPROOFING



FULL SIZE PLANS HAVE BEEN PREPARED USING STANDARD ENGINEERING SCALES; REDUCED SIZED PLANS WILL NOT CONFORM TO STANDARD SCALES. IN MAKING MEASUREMENTS ON REDUCED PLANS, THE ABOVE SCALES MAY BE USED

**DIGGER:**  
CHICAGO UTILITY ALERT NETWORK  
(312) 744-7000

**CTA CONTACT:**  
MARVIN A. WATSON,  
GENERAL MANAGER, CONSTRUCTION  
(312) 681-3860

**CONTRACT NO. 62304**

**LOCATION MAP**

GROSS LENGTH OF PROJECT = 29153.4 FT. = 5.521 MI.  
NET LENGTH OF PROJECT = 29153.4 FT. = 5.521 MI.

**STATE OF ILLINOIS  
DEPARTMENT OF TRANSPORTATION  
DIVISION OF HIGHWAYS**

SUBMITTED \_\_\_\_\_ 20 \_\_\_\_\_

DISTRICT ENGINEER

\_\_\_\_\_ 20 \_\_\_\_\_

ENGINEER OF DESIGN AND ENVIRONMENT

\_\_\_\_\_ 20 \_\_\_\_\_

DIRECTOR, DIVISION OF HIGHWAYS

**CONTRACT 20**

**TYLIN INTERNATIONAL**  
PRINTED BY THE AUTHORITY OF THE STATE OF ILLINOIS

DISTRICT ONE DESIGN / PROJECT MANAGER:  
BRIAN KUTTAB (847) 705 - 4431