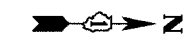
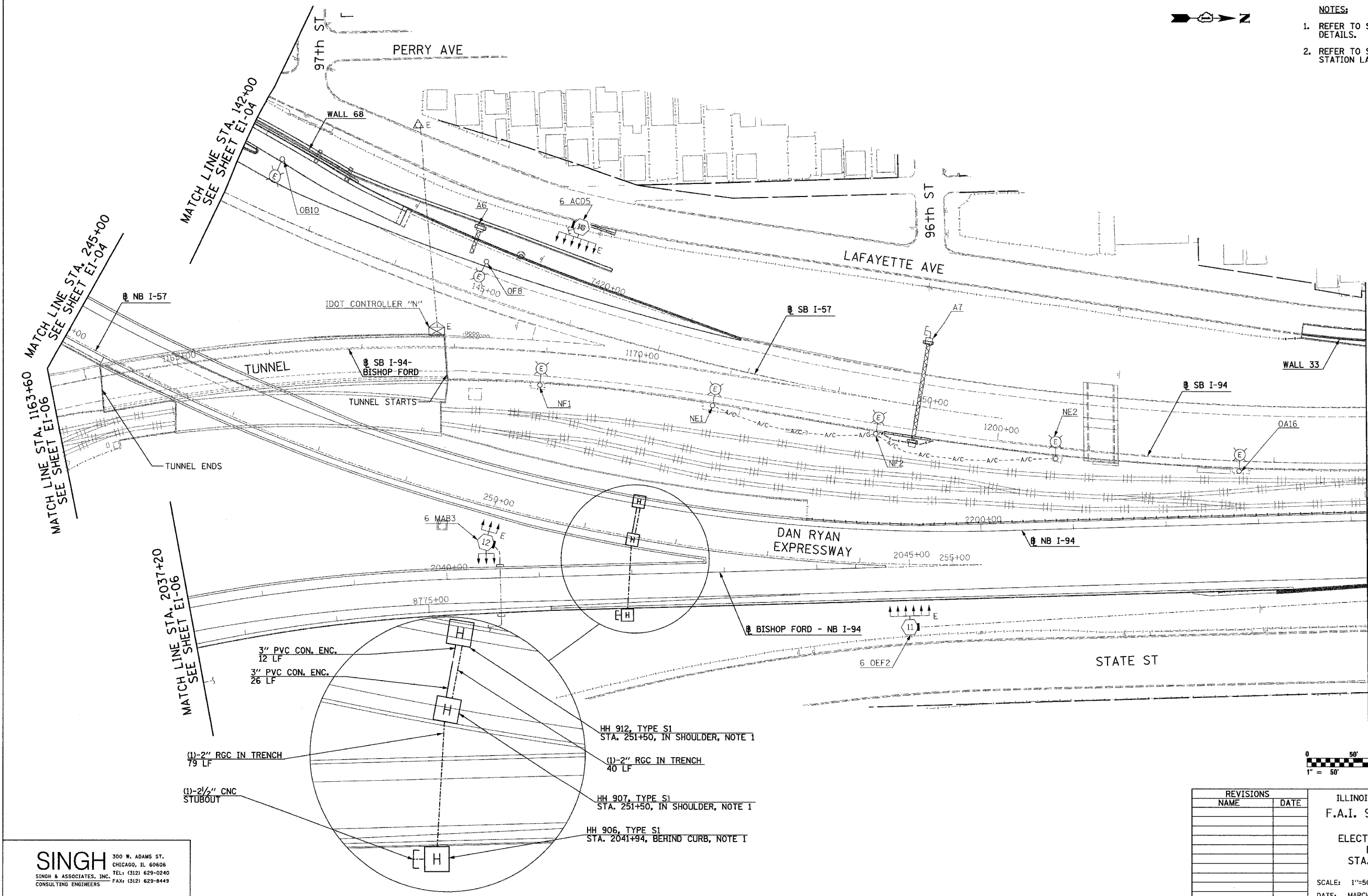


F.A.I. RTE.	SECTION	COUNTY	TOTAL SHEETS	SHEET NO.
94	*	COOK	916	507
STA. 245+00		TO STA. 2204+17		
FED. ROAD DIST. NO.	ILLINOIS	FED. AID PROJECT		
* (1516.1, 1717, & 1818) R-4				62304

NOTES:

- REFER TO SHEET EI-106 AND EI-110 FOR HANDHOLE DETAILS.
- REFER TO SHEET EI-115 FOR DETECTOR STATION LAYOUT.



20/EI-09

REVISIONS	
NAME	DATE

ILLINOIS DEPARTMENT OF TRANSPORTATION
F.A.I. 94 (DAN RYAN EXPRESSWAY)
ELECTRICAL INFRASTRUCTURE PLANS
PROPOSED IMPROVEMENTS
STA. 245+00 TO STA. 2204+17

SCALE: 1"=50' DRAWN BY: VK
DATE: MARCH 7, 2006 CHECKED BY: TM

SINGH
SINGH & ASSOCIATES, INC.
CONSULTING ENGINEERS

300 W. ADAMS ST.
CHICAGO, IL 60606
TEL: (312) 629-0240
FAX: (312) 629-8449

J:\75\dgn\1021753b_ei-09-20.stn 2:09:34 PM 3/11/2006