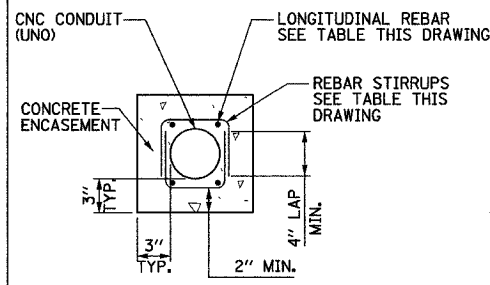
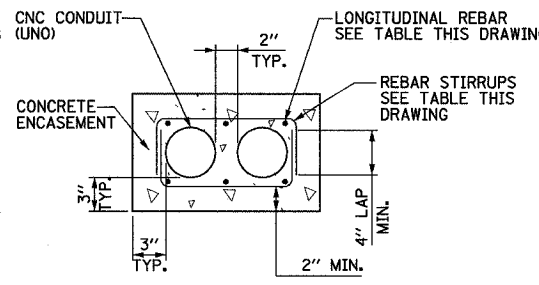


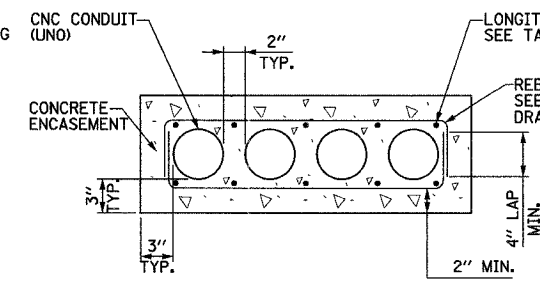
F.A.I. RTE.	SECTION	COUNTY	TOTAL SHEETS	SHEET NO.
94	*	COOK	916	517
STA.	TO STA.			
FED. ROAD DIST. NO.	ILLINOIS FED. AID PROJECT			
	* (1516.J, 1717, & 1818) R-4			
				62304



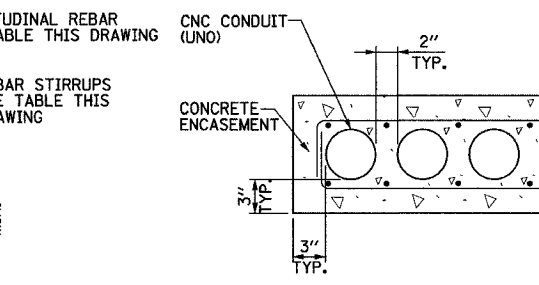
**1x1 DUCTBANK DETAIL-**  
**IN REINFORCED CONCRETE**  
NOT TO SCALE



**2x1 DUCTBANK DETAIL-**  
**IN REINFORCED CONCRETE**  
NOT TO SCALE



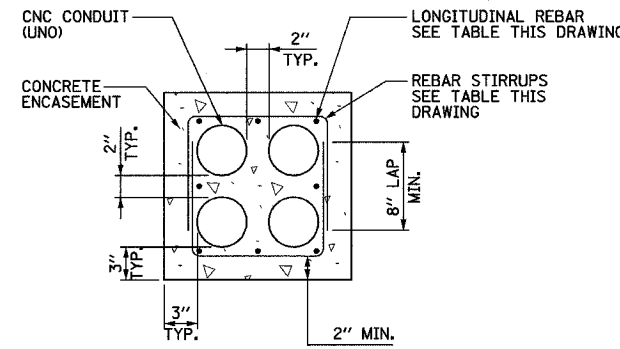
**4x1 DUCTBANK DETAIL-**  
**IN REINFORCED CONCRETE**  
NOT TO SCALE



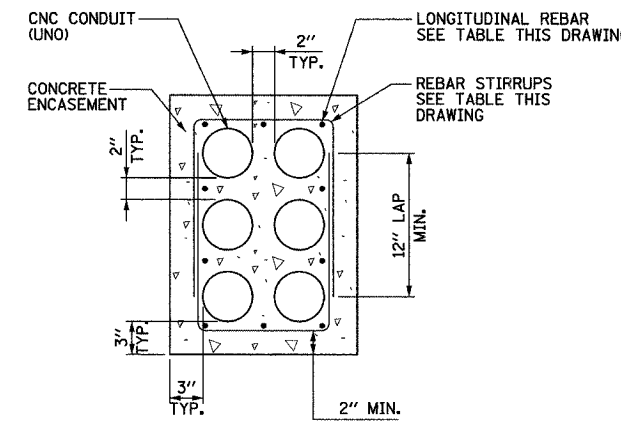
**6x1 DUCTBANK DETAIL-**  
**IN REINFORCED CONCRETE**  
NOT TO SCALE

**NOTES:**

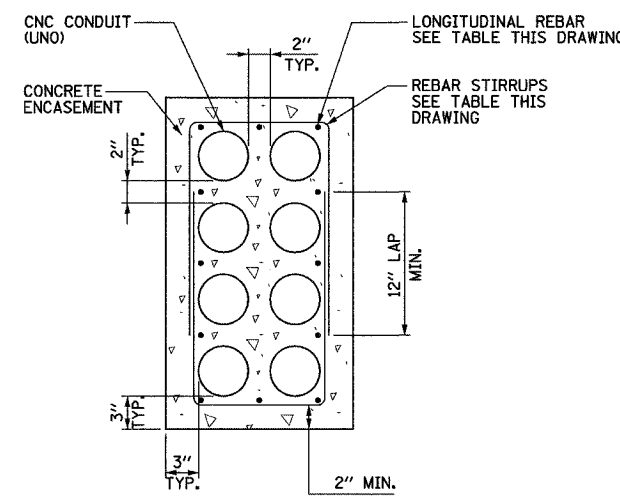
- SEE DRAWINGS 20/EI-100 AND 20/EI-101 FOR ELECTRICAL SYMBOLS AND ABBREVIATIONS.
- PROVIDE MINIMUM CLEARANCE SHOWN FROM TOP OF DUCTBANK TO FINISHED GRADE FOR ALL DUCTBANKS, REGARDLESS OF SIZE. CONTRACTOR SHALL INSTALL DUCTBANKS SUCH THAT THEY WILL CLEAR ALL UNDERGROUND OBSTACLES.
- TRENCH SHALL HAVE MINIMUM WIDTH SHOWN FOR ALL DUCTBANKS DETAILED ON THIS DRAWING. THE CONTRACTOR SHALL INCREASE TRENCH WIDTH FOR ADDITIONAL CONDUITS, AS DIRECTED BY THE ENGINEER, (AT NO ADDITIONAL COST).



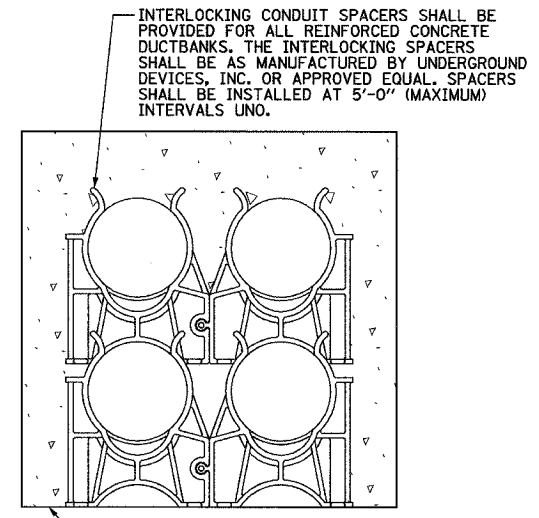
**2x2 DUCTBANK DETAIL-**  
**IN REINFORCED CONCRETE**  
NOT TO SCALE



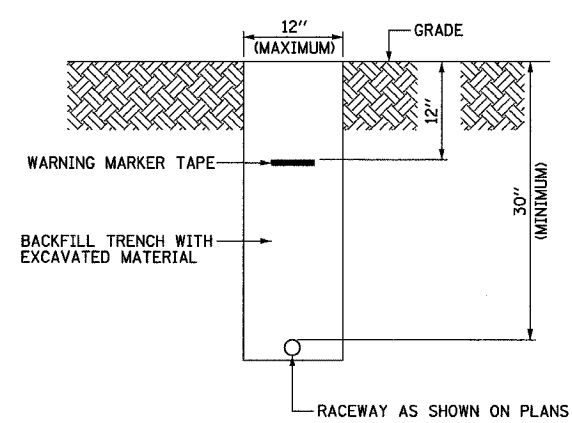
**2x3 DUCTBANK DETAIL-**  
**IN REINFORCED CONCRETE**  
NOT TO SCALE



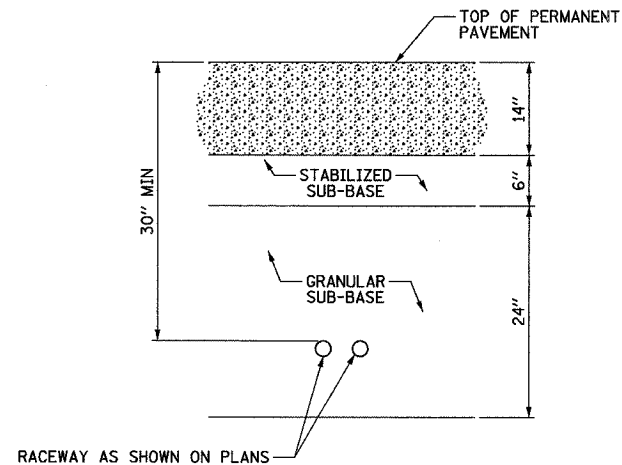
**2x4 DUCTBANK DETAIL-**  
**IN REINFORCED CONCRETE**  
NOT TO SCALE



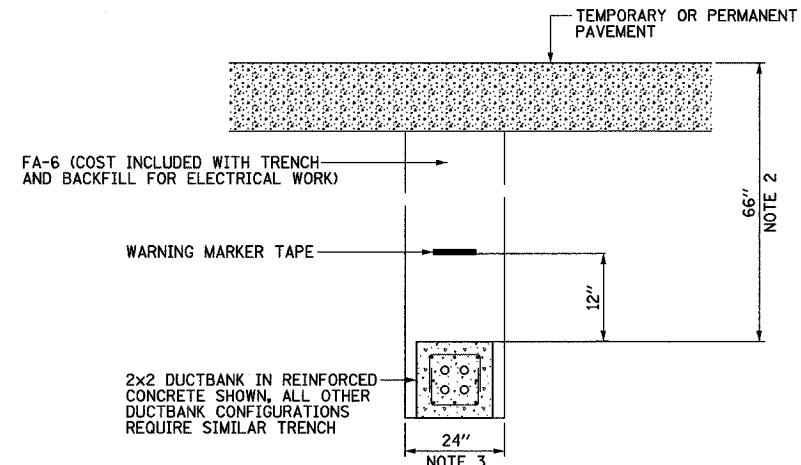
**INTERLOCKING CONDUIT SPACER DETAIL**  
NOT TO SCALE



**TYPICAL ELECTRICAL CONDUIT IN UNPAVED AREA**  
NOT TO SCALE



**TYPICAL SURVEILLANCE CONDUIT UNDER PERMANENT SHOULDER**  
STA. 2216+00 TO 2216+20  
NOT TO SCALE



**TYPICAL ELECTRICAL DUCTBANK UNDER PAVEMENT**  
NOT TO SCALE

DUCTBANK REINFORCEMENT TABLE		
DUCTBANK CONCRETE CROSS-SECTIONAL AREA SQ. INCHES	LONGITUDINAL REBAR	REBAR STIRRUPS
	BARS	
LESS THAN 450	*4	*3 AT 12" SPACING
451 TO 650	*5	*3 AT 12" SPACING
GREATER THAN 651	*6	*3 AT 12" SPACING

REVISIONS	
NAME	DATE

ILLINOIS DEPARTMENT OF TRANSPORTATION  
F.A.I. 94 (DAN RYAN EXPRESSWAY)

**ELECTRICAL DUCTBANK DETAILS**

SCALE: NOT TO SCALE  
DATE: MARCH 7, 2006  
DRAWN BY:  
CHECKED BY:

**SINGH**  
SINGH & ASSOCIATES, INC.  
CONSULTING ENGINEERS

300 W. ADAMS ST.  
CHICAGO, IL 60606  
TEL: (312) 629-0240  
FAX: (312) 629-8449

J:\V5\contract 20 details\20\_ei102\_01090222.sht 4/13/06 3/7/2006