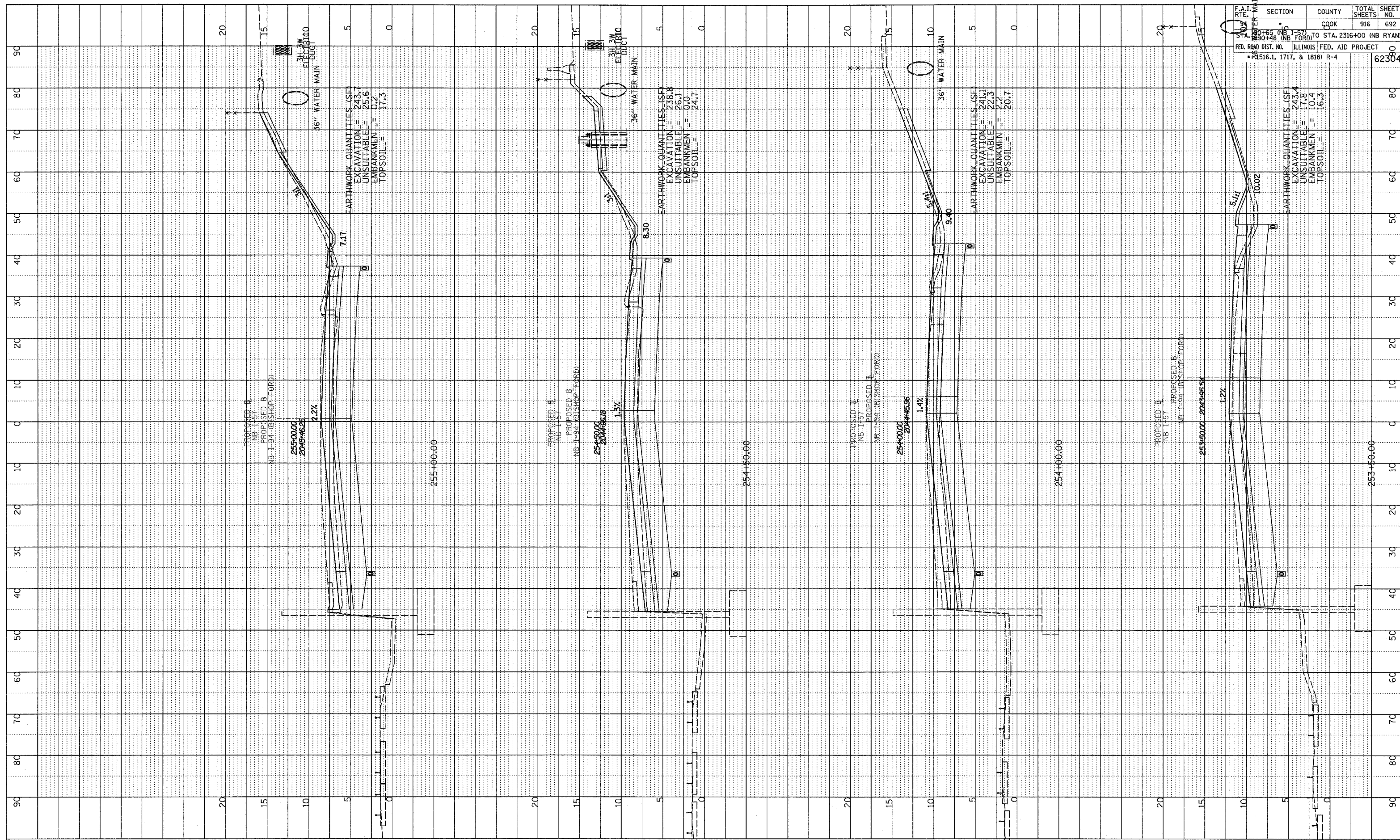
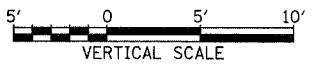
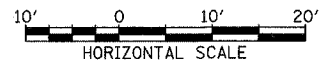


PROFILE SURVEYED _____ DATE _____
 NOTE BOOK _____
 NO. _____
 GRADES CHECKED _____
 E.M. NOTED _____
 STRUCTURE NOTATIONS CHECKED _____



F.A.I. RTE.	SECTION	COUNTY	TOTAL SHEETS	SHEET NO.
157	1-157	COOK	916	692
STA. 2316+00 (NB RYAN) TO STA. 2316+00 (NB RYAN)				
FED. ROAD DIST. NO. ILLINOIS FED. AID PROJECT				
2516.1, 1717, & 1818) R-4				
				62304

TYLIN INTERNATIONAL



NORTHBOUND I-57
 STA. 253+50 TO STA. 255+00

03/03/2006 04:00:43 PM