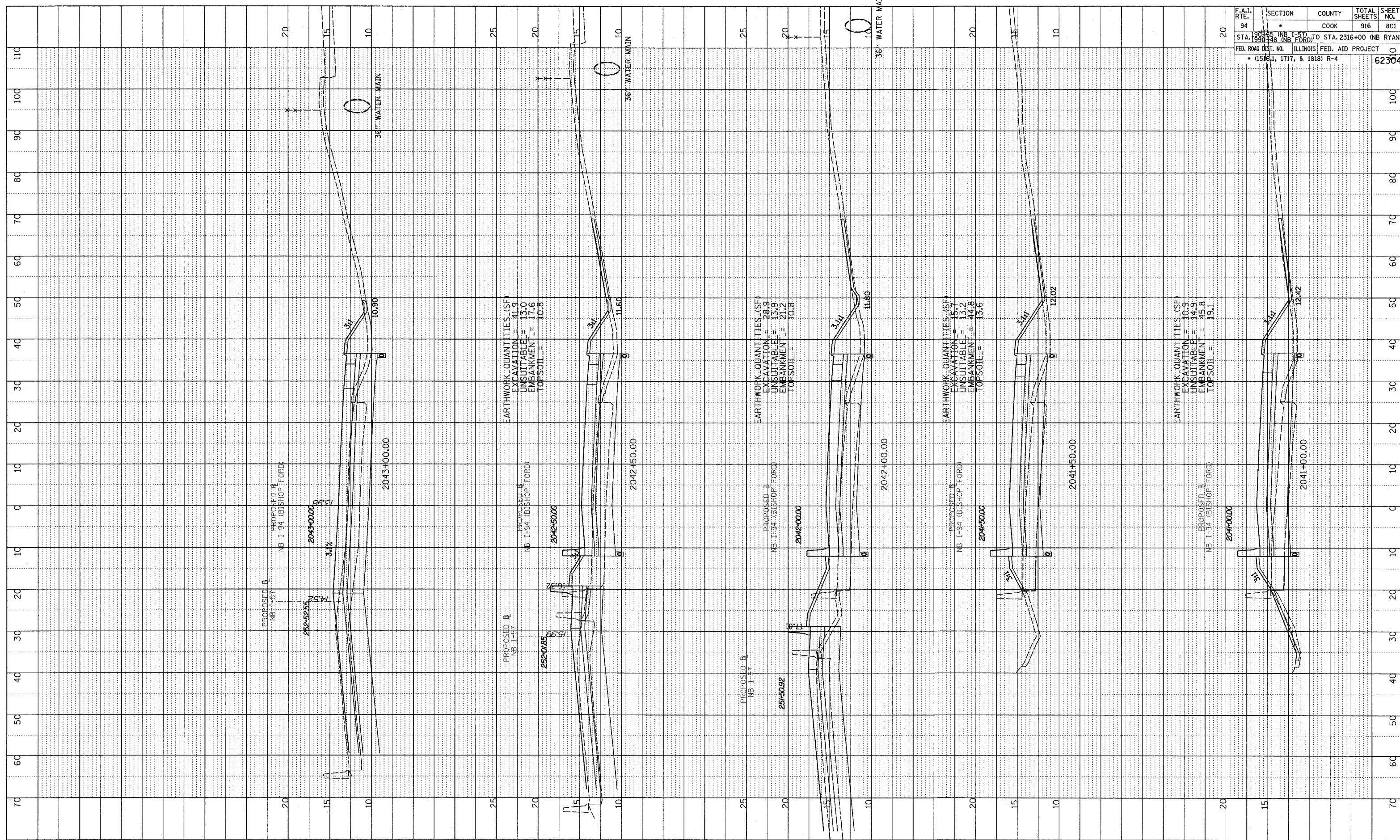


PROFILE SURVEYED
 NOTE BOOK
 NO.

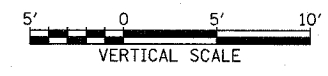
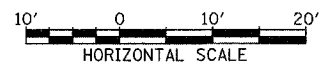
BY
 DATE

GRADES CHECKED
 B.M. NOTED
 STRUCTURE NOTED (NS CRVD)



F.A.I. RTE.	SECTION	COUNTY	TOTAL SHEETS	SHEET NO.
94	190+45 (NB I-57) TO STA. 2316+00 (NB RYAN)	COOK	916	801
STA. 190+45 (NB I-57) TO STA. 2316+00 (NB RYAN) STA. 190+49 (NB FORD)				
FED. ROAD DIST. NO. ILLINOIS FED. AID PROJECT • (1516, 1, 1717, & 1818) R-4				
				62304

TYLIN INTERNATIONAL



NORTHBOUND I-94 (BISHOP FORD EXPWY)
 STA. 2041+00 TO STA. 2043+00

03/03/2006 04:08 PM