

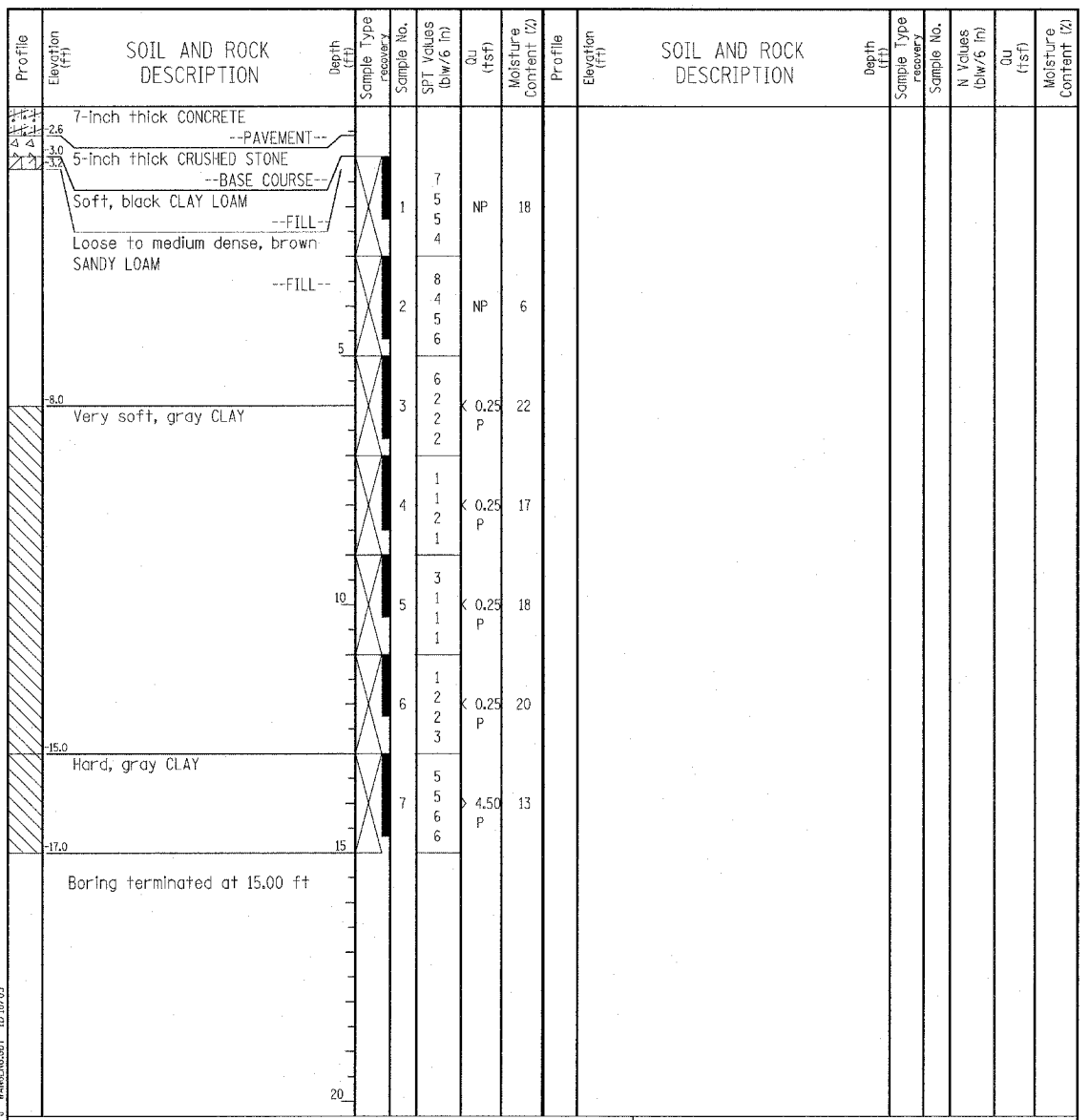
Wang Engineering, Inc.
 Consulting Geotechnical and Environmental Engineers
 wangeng3@wangeng.com
 1145 Main Street
 Lombard, IL 60148
 Telephone: 630 953-9928
 Fax: 630 953-9938

BORING LOG P-017 Page 1 of 1

WEI Job No.: 414-07-01

Datum: CCD
 Elevation: -1.99 ft
 North: 1845256.17 ft
 East: 1177785.74 ft
 Station: 2238+88.69
 Offset: 57.65' RT

Client: T. Y. LIN International, Inc.
 Project: Dan Ryan Contracts 62304 (20) and 62593 (23)
 Location: City of Chicago, Cook County, Illinois



GENERAL NOTES				WATER LEVEL DATA			
Begin Drilling	07-02-2003	Complete Drilling	07-02-2003	While Drilling	∇	DRY	
Drilling Contractor	Patrick Drilling	Drill Rig	CME 75 TMR	At Completion of Drilling	∇	DRY	
Driller	J&B	Logger	Y. Shiu	Time After Drilling	NA		
Checked by	MLS			Depth to Water	∇	NA	
Drilling Method	3.25" ID, HSA; Boring backfilled with bentonite upon completion			The stratification lines represent the approximate boundary between soil types; the actual transition may be gradual.			

Wang Engineering, Inc.
 Consulting Geotechnical and Environmental Engineers
 wangeng3@wangeng.com
 1145 Main Street
 Lombard, IL 60148
 Telephone: 630 953-9928
 Fax: 630 953-9938

BORING LOG P-018 Page 1 of 1

WEI Job No.: 414-07-01

Datum: CCD
 Elevation: 3.22 ft
 North: 1845815.36 ft
 East: 1177771.03 ft
 Station: 2244+48.07
 Offset: 58.96' RT

Client: T. Y. LIN International, Inc.
 Project: Dan Ryan Contracts 62304 (20) and 62593 (23)
 Location: City of Chicago, Cook County, Illinois

