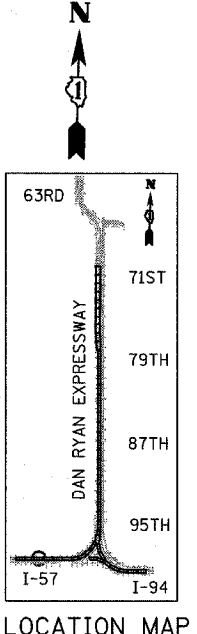
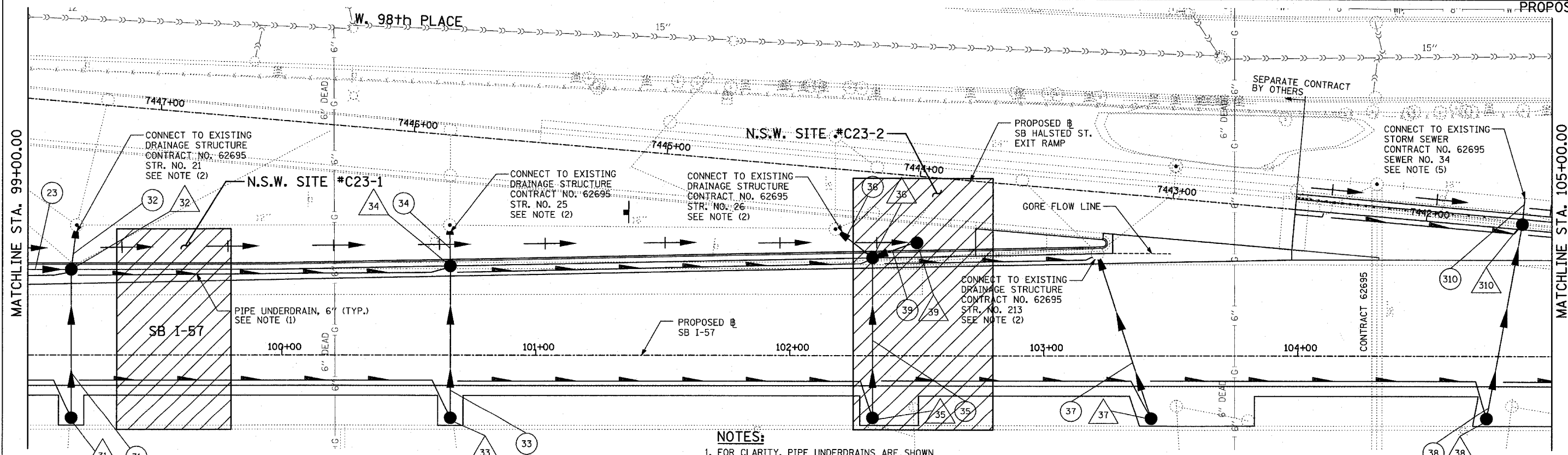


EXISTING CONDITIONS  
PROPOSED IMPROVEMENTS



**LEGEND:**

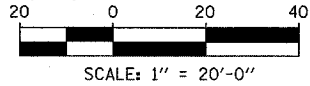
- |  |  |  |   |
|--|--|--|---|
|  | EXISTING COMBINED SEWER                                  |  | SEWER PLUG  |
|  | PROPOSED STORM SEWER NUMBER (X=SHEET NO., Y=PIPE NO.)    |  | FIELD VERIFY  |
|  | PROPOSED STRUCTURE NUMBER (X=SHEET NO., Y=STRUCTURE NO.) |  | UTILITY REMOVAL   |
|  | PIPE STUBOUT TO BE PLUGGED                               |  | PROPOSED CATCH BASIN CONSTRUCTED IN CONCURRENT CONTRACT 62304 |
|  |  |  | PROPOSED STORM SEWER CONSTRUCTED IN CONCURRENT CONTRACT 62304 |

**NOTES:**

- FOR CLARITY, PIPE UNDERDRAINS ARE SHOWN OFFSET FROM THEIR PROPOSED LOCATIONS. FOR DETAILED PLACEMENT, SEE SHEET "PIPE UNDERDRAINS DETAIL."
- CORE DRILL AND CONNECT TO EXISTING DRAINAGE STRUCTURE. CONNECTION COST SHALL BE INCLUDED IN THE COST TO CONSTRUCT THE STORM SEWER.
- COST TO REMOVE FRAME AND GRATE SHALL BE INCLUDED IN THE COST TO FILL THE DRAINAGE STRUCTURE.
- SEWERS INDICATED AS SUCH WERE ABANDONED UNDER A PREVIOUS CONTRACT AND WILL BE REMOVED UNDER CURRENT CONTRACT.

5. COST SHALL NOT BE PAID FOR SEPARATELY BUT INCLUDED IN COST OF SEWER INSTALLATION.

NSW - NON SPECIAL WASTE SITES ADDED TO SHEET



SHEET 3 OF 65

| REVISIONS |      |
|-----------|------|
| NAME      | DATE |
|           |      |
|           |      |
|           |      |
|           |      |
|           |      |

ILLINOIS DEPARTMENT OF TRANSPORTATION  
F.A.I. 94 (DAN RYAN EXPRESSWAY)  
DRAINAGE AND UTILITY PLANS  
SB I-57  
SB I-57 STA. 99+00.00 TO 105+00.00

SCALE: 1"=20'  
DATE: MARCH 1, 2006  
DRAWN BY: NSB  
CHECKED BY: DA