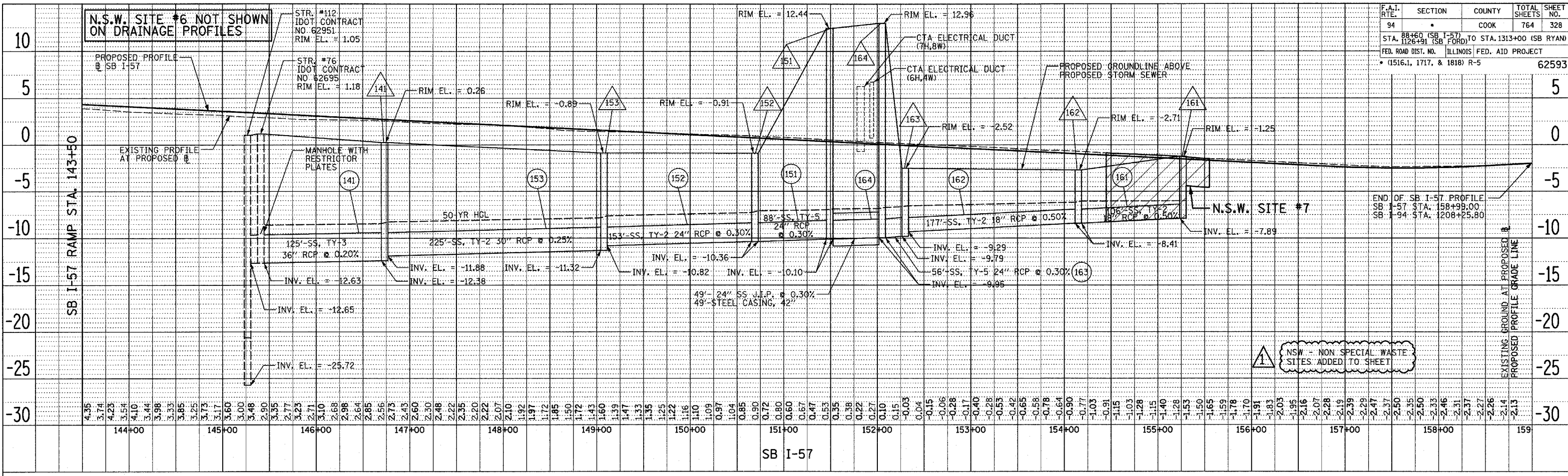
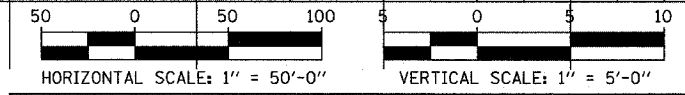
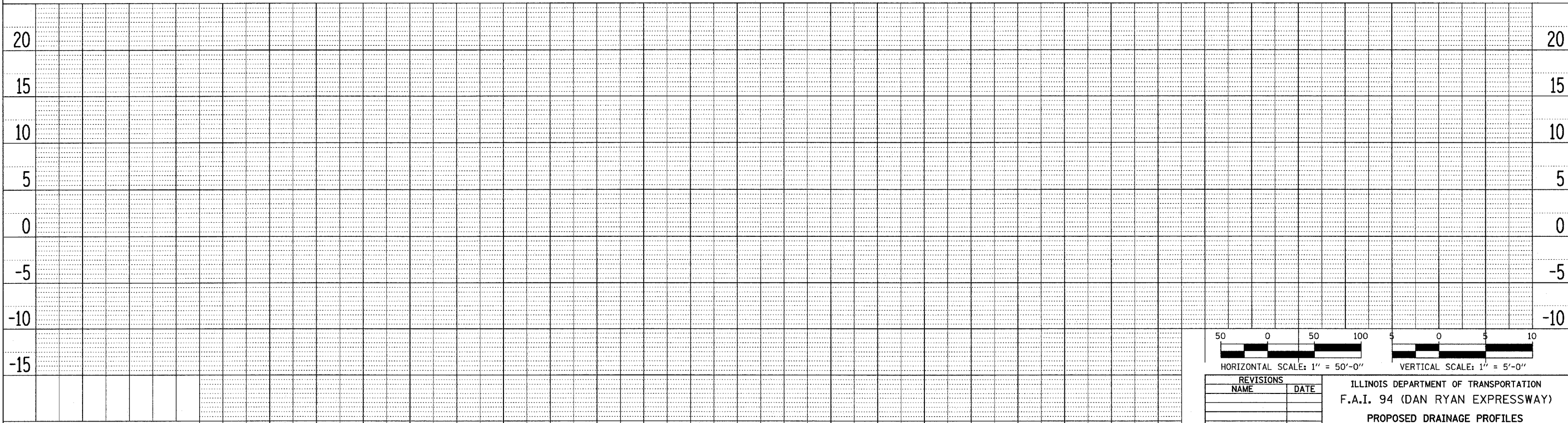


F.A.I. RTE.	SECTION	COUNTY	TOTAL SHEETS	SHEET NO.
94		COOK	764	328
STA. 88+60 (SB I-57) TO STA. 1313+00 (SB RYAN)				
FED. ROAD DIST. NO. ILLINOIS FED. AID PROJECT				
• (1516, 1, 1717, & 1818) R-5 62593				



NSW - NON SPECIAL WASTE SITES ADDED TO SHEET



REVISIONS	
NAME	DATE

ILLINOIS DEPARTMENT OF TRANSPORTATION
 F.A.I. 94 (DAN RYAN EXPRESSWAY)
 PROPOSED DRAINAGE PROFILES
 SB I-57
 SB I-57 STA. 143+50 TO 158+99
 SHEET 2 OF 7

SCALE: 1"=50' HORIZ.
 1"=5' VERT.
 DATE: MARCH 1, 2006
 DRAWN BY: RJD/NSB
 CHECKED BY: DA

ADDENDUM 1 - NSW 05/08/06

TYLIN INTERNATIONAL

PLAN SURVEYED PLOTTED CHECKED BY DATE
 NOTE BOOK NO. OF WAY CHECKED CADD FILE NAME

PLAN SURVEYED PLOTTED CHECKED BY DATE
 NOTE BOOK NO. OF WAY CHECKED CADD FILE NAME