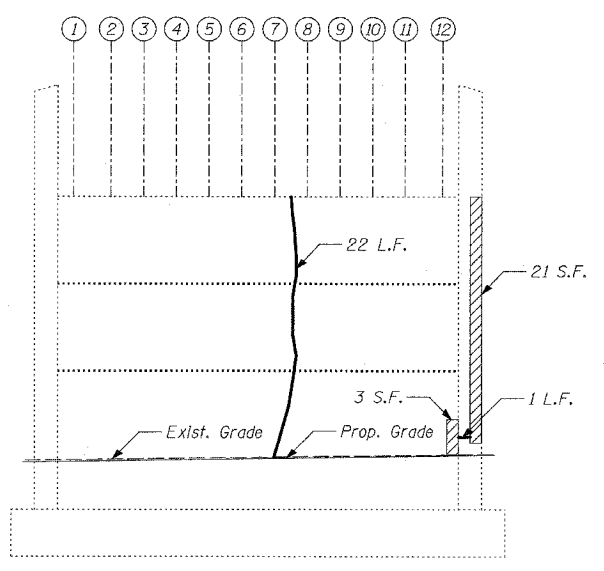
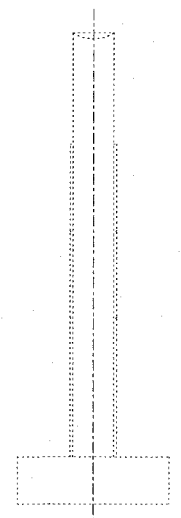


PIER 3 - END VIEW
(Looking North)

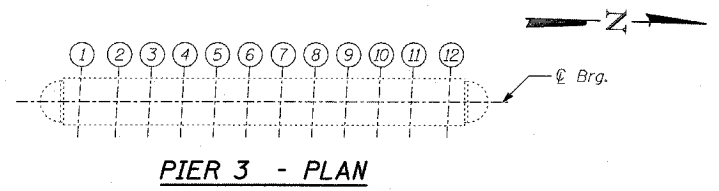
PIER 3 - ELEVATION
(Looking East)



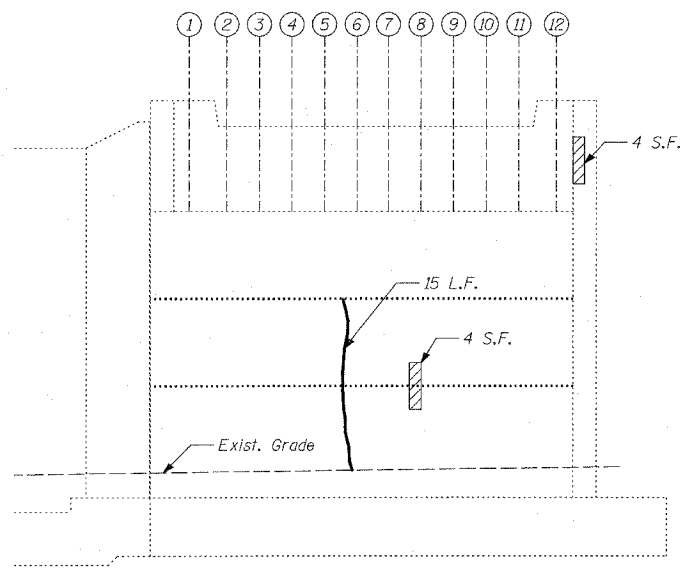
PIER 3 - ELEVATION
(Looking West)



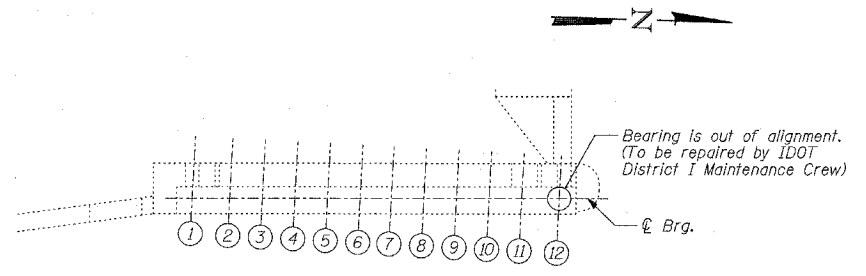
PIER 3 - END VIEW
(Looking South)



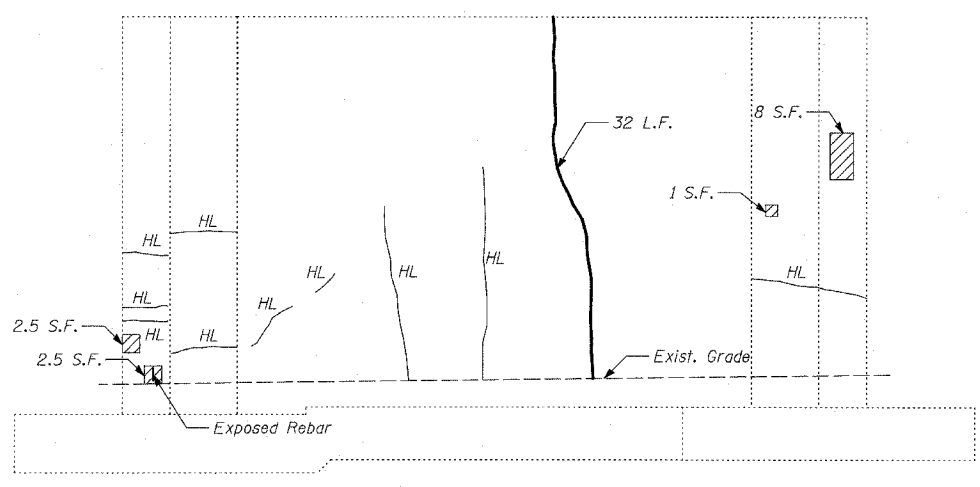
PIER 3 - PLAN



ABUTMENT 1 - ELEVATION
(Looking West)



ABUTMENT 1 - PLAN



NORTH RETAINING WALL BETWEEN ABUTMENT 1 AND 2 - ELEVATION
(Looking South)

LEGEND

- Formed Concrete Repair (Depth < 5")
- Epoxy Crack Sealing
- Hair Line Crack

BILL OF MATERIAL

ITEM	UNIT	TOTAL
Epoxy Crack Sealing	FOOT	84
Formed Concrete Repair (Depth < 5")	SQ FT	113

TYLIN INTERNATIONAL

REVISIONS	
NAME	DATE

ILLINOIS DEPARTMENT OF TRANSPORTATION
F.A.I. 94 (DAN RYAN EXPRESSWAY)
SUBSTRUCTURE REPAIR
FOR NORFOLK SOUTHERN
EXISTING PIER 3 & ABUTMENT 1

S.N. 016-0144 DESIGNED BY: MAF, DJR
SCALE: N.T.S. DRAWN BY: MAF, DJR
DATE: MARCH 1, 2006 CHECKED BY: MI