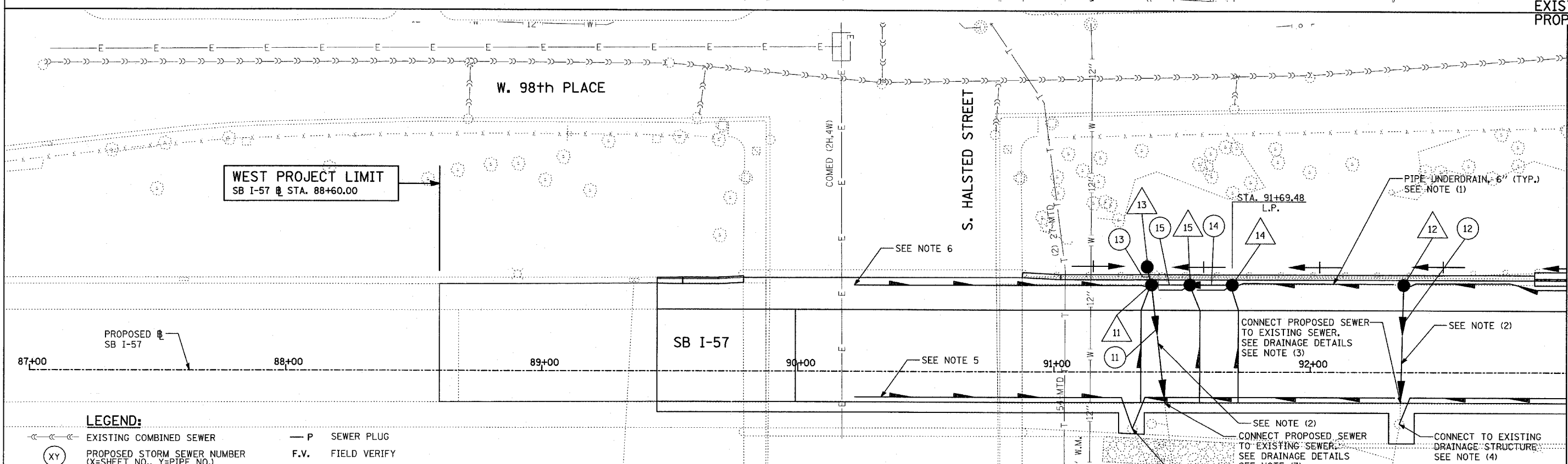
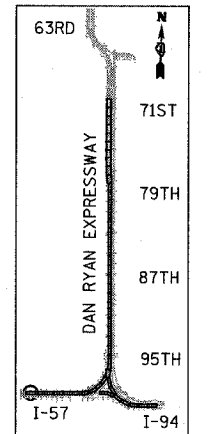


MATCHLINE STA. 93+00.00



MATCHLINE STA. 93+00.00



LOCATION MAP

LEGEND:

- EXISTING COMBINED SEWER
- (XY) PROPOSED STORM SEWER NUMBER (X=SHEET NO., Y=PIPE NO.)
- (XY) PROPOSED STRUCTURE NUMBER (X=SHEET NO., Y=STRUCTURE NO.)
- S- PIPE STUBOUT TO BE PLUGGED
- P SEWER PLUG
- F.V. FIELD VERIFY
- ////// UTILITY REMOVAL
- PROPOSED CATCH BASIN CONSTRUCTED IN CONCURRENT CONTRACT 62304
- PROPOSED STORM SEWER CONSTRUCTED IN CONCURRENT CONTRACT 62304

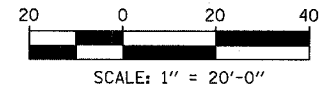
NOTES:

1. FOR CLARITY, PIPE UNDERDRAINS ARE SHOWN OFFSET FROM THEIR PROPOSED LOCATIONS. FOR DETAILED PLACEMENT, SEE SHEET "PIPE UNDERDRAINS DETAIL."
2. REPLACE EXISTING SEWER WITH A SEWER THAT IS SHOWN ON SCHEDULES. CONTRACTOR SHALL VERIFY EXISTING CONDITIONS PRIOR TO ORDERING OF MATERIAL.
3. COST SHALL NOT BE PAID FOR SEPARATELY BUT INCLUDED IN COST OF SEWER INSTALLATION.
4. CORE DRILL AND CONNECT TO EXISTING DRAINAGE STRUCTURE. CONNECTION COST SHALL BE INCLUDED IN THE COST TO CONSTRUCT THE STORM SEWER.
5. PROPOSED PIPE UNDERDRAIN SYSTEM LOCATION SHALL BE COORDINATED WITH PROPOSED ELECTRICAL DUCT BANK AND EXISTING FOOTING. SEE TYPICAL SECTIONS AND DETAILS FOR OVERPASS FOOTINGS.
6. START PIPE UNDERDRAIN 5' EAST OF EXISTING COM ED (2H, 4W) DUCT BANK.

SHEET 1 OF 65

REVISIONS	
NAME	DATE

ILLINOIS DEPARTMENT OF TRANSPORTATION
 F.A.I. 94 (DAN RYAN EXPRESSWAY)
DRAINAGE AND UTILITY PLANS
 SB I-57
 SB I-57 STA. 88+60.00 TO 93+00.00



SCALE: 1"=20'
 DATE: MARCH 1, 2006
 DRAWN BY: NSB
 CHECKED BY: DA