

STATE OF ILLINOIS
DEPARTMENT OF TRANSPORTATION

F.A.P. RTE.	SECTION	COUNTY	TOTAL SHEETS	SHEET NO.
339	531-1-T	COOK	24	1
FED. ROAD DIST. NO.	ILLINOIS	CONTRACT NO. 62A27		

PROPOSED HIGHWAY PLANS

FAP 342 (IL ROUTE 53)
SECTION 531-1-T
NORTHBOUND RAMP TO IL-62 (ALGONQUIN ROAD)
DRAINAGE IMPROVEMENT
COOK COUNTY
C-91-114-15

FOR INDEX OF SHEETS, SEE SHEET NO. 2

IMPROVEMENT LOCATED IN
THE VILLAGE OF ROLLING MEADOWS
AND VILLAGE OF SCHAUMBURG

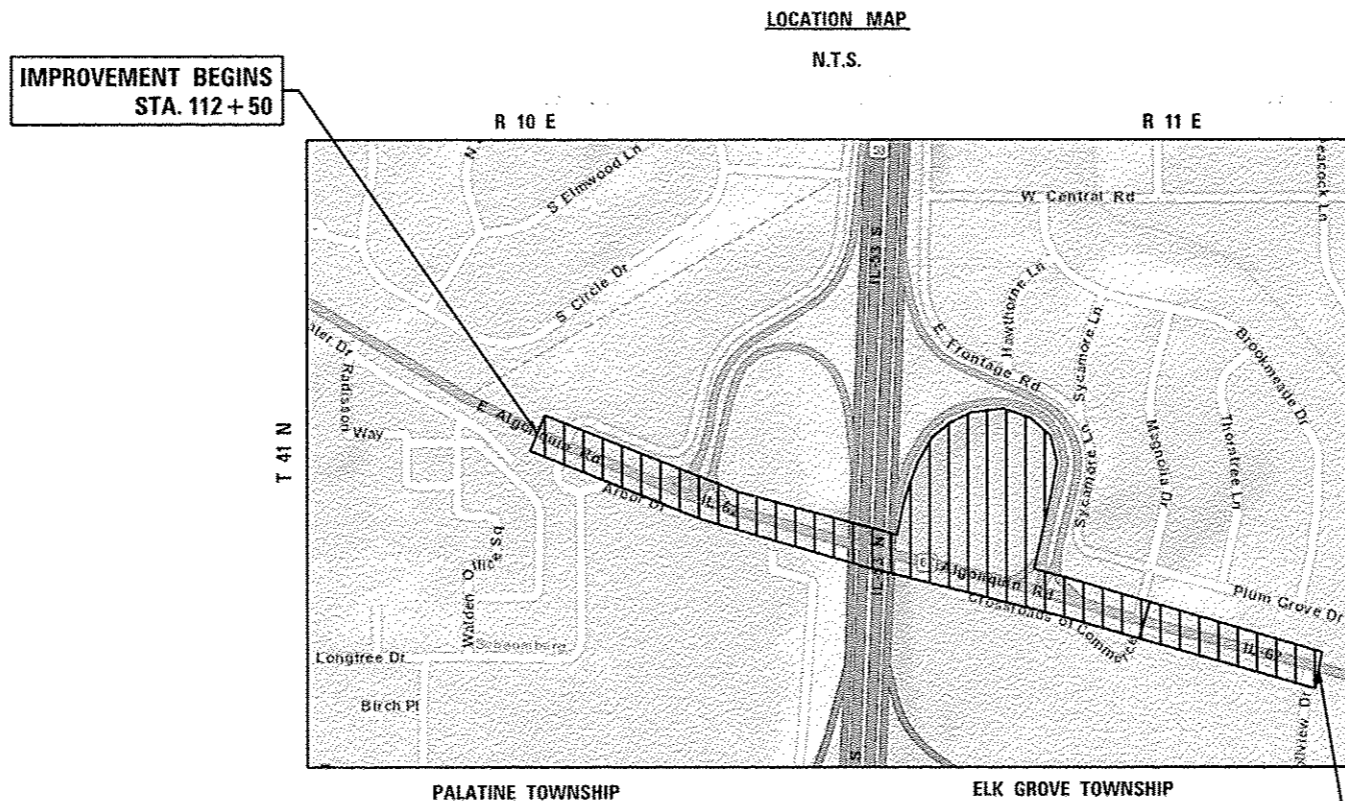
DESIGN DESIGNATION:

SPEED LIMIT: 35 - 40 M.P.H.
2013 ADT = 38,000

D-91-114-15

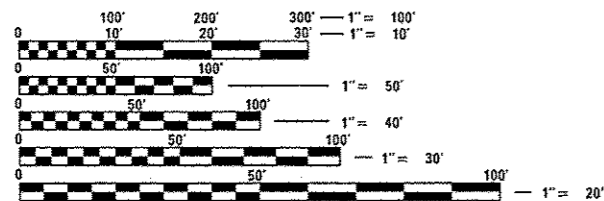


LOCATION OF SECTION INDICATED THIS: - [highlighted area]



IMPROVEMENT BEGINS
STA. 112 + 50

IMPROVEMENT ENDS
STA. 151 + 25



FULL SIZE PLANS HAVE BEEN PREPARED USING STANDARD ENGINEERING SCALES. REDUCED SIZED PLANS WILL NOT CONFORM TO STANDARD SCALES. IN MAKING MEASUREMENTS ON REDUCED PLANS, THE ABOVE SCALES MAY BE USED.

J.U.L.I.E.
JOINT UTILITY LOCATION INFORMATION FOR EXCAVATION
1-800-892-0123
OR 811

(HRGREEN) PROJECT ENGINEER: BENJAMIN HARTMAN (815) 385-1778
(IDOT) PROJECT MANAGER: KARI SMITH (847) 705-4437

GROSS LENGTH OF IMPROVEMENT = 3,875 FEET = 0.734 MILE
NET LENGTH OF IMPROVEMENT = 3,875 FEET = 0.734 MILE

CONTRACT NO. 62A27

STATE OF ILLINOIS
DEPARTMENT OF TRANSPORTATION

SUBMITTED MARCH 24, 2016

[Signature]
REGIONAL ENGINEER

[Signature] May 6 2016
MAYHEM M. ADDIS, P.E.
ENGINEER OF DESIGN AND ENVIRONMENT

[Signature] May 6 2016
DIRECTOR OF PROGRAM DEVELOPMENT

PROFESSIONAL ENGINEER'S SIGN & SEAL

[Signature]
BENJAMIN D. HARTMAN, P.E.
EXPIRES: 11-30-17

PRINTED BY THE AUTHORITY
OF THE STATE OF ILLINOIS

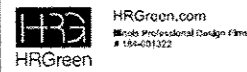
INDEX OF SHEETS

1	COVER SHEET
2	INDEX OF SHEETS, LIST OF STATE STANDARDS, AND DISTRICT ONE DETAILS
3	GENERAL NOTES
4-5	SUMMARY OF QUANTITIES
6-7	SUGGESTED MAINTENANCE OF TRAFFIC PLANS
8-9	REMOVAL PLANS
10-11	DRAINAGE PLANS
12	IL ROUTE 53 RAMP GRADING IMPROVEMENT PLAN
13	IL ROUTE 53 RAMP EROSION CONTROL PLAN
14	IL ROUTE 53 RAMP LANDSCAPING PLAN
15	CONSTRUCTION DETAIL RESTRICTOR STRUCTURE
16	DETAIL OF STORM SEWER CONNECTION TO EXISTING SEWER (BD-07)
17	CURB OR CURB AND GUTTER REMOVAL AND REPLACEMENT (BD-24)
18	PCC PAVEMENT ROUNDOUTS AT CURB AND GUTTER (BD-48)
19	TRAFFIC CONTROL AND PROTECTION FOR SIDE ROADS, INTERSECTIONS, AND DRIVEWAYS (TC-10)
20	TRAFFIC CONTROL AND PROTECTION AT TURN BAYS (TC- 14)
21	PAVEMENT MARKING LETTERS AND SYMBOLS FOR TRAFFIC STAGING (TC-16)
22	TRAFFIC CONTROL DETAILS FOR FREEWAY SHOULDER CLOSURES AND PARTIAL RAMP CLOSURES (TC-17)
23	SIGNING FOR FLAGGING OPERATIONS AT WORK ZONE OPENINGS (TC-18)
24	ARTERIAL ROAD INFORMATION SIGN (TC-22)

LIST OF STATE STANDARDS

STANDARD NO.	DESCRIPTION
000001 - 04	STANDARD SYMBOLS, ABBREVIATIONS AND PATTERNS
280001 - 07	TEMPORARY EROSION CONTROL SYSTEMS
442101 - 07	CLASS B PATCHES
542301 - 03	PRECAST REINFORCED CONCRETE FLARED END SECTION
602006 - 04	CATCH BASINS TYPE B
602011 - 02	CATCH BASINS TYPE C
602301 - 04	INLETS TYPE A
602401 - 03	MANHOLE TYPE A
602601 - 04	PRECAST REINFORCED CONCRETE FLAT SLAB TOP
604001 - 04	FRAME AND LIDS TYPE 1
604031 - 03	GRATE TYPE 7
604051 - 04	FRAME AND GRATE TYPE 11
604091 - 03	FRAME AND GRATE TYPE 24
606001 - 06	CONCRETE CURB TYPE B AND COMBINATION CONCRETE CURB AND GUTTER
664001 - 02	CHAIN LINK FENCE
701101 - 05	OFF-RD OPERATIONS, MULTILANE, 15' TO 24" FROM PAVEMENT EDGE
701427 - 04	LANE CLOSURE, MULTILANE, INTERMITTENT OR MOVING OPER., FOR SPEEDS < 40 MPH
701601 - 09	URBAN LANE CLOSURE, MULTILANE, 1W OR 2W WITH NONTRAVERSABLE MEDIAN
701701 - 10	URBAN LANE CLOSURE, MULTILANE INTERSECTION
701801 - 06	SIDEWALK, CORNER OR CROSSWALK CLOSURE
701901 - 05	TRAFFIC CONTROL DEVICES

COMPANY NAME: HRGreen
 PROJECT CONTACT: HRGreen
 CLIENT: HRGreen
 DATE PLOTTED: 10/15/2015 12:25:18 PM
 FILE NAME: 88100196-52-sht-gen-01.dgn
 PLOT DRIVER: R:\pdf\dwgplot19
 PEN TABLE: PLOTLABEL.tbl



USER NAME: bhartna	DESIGNED: BH	REVISED: -
FILE NAME: 88100196-52-sht-gen-01.dgn	DRAWN: DS	REVISED: -
PLOT SCALE: N.T.S.	CHECKED: TH	REVISED: -
PLOT DATE: 10/15/2015	DATE: 10/15/2015	REVISED: -

**STATE OF ILLINOIS
 DEPARTMENT OF TRANSPORTATION**

INDEX OF SHEETS, STATE STANDARDS AND DISTRICT ONE DETAILS

SCALE: N.T.S. SHEET NO. 1 OF 1 SHEETS STA. TO STA.

F.A.U. RTE.	SECTION	COUNTY	TOTAL SHEETS	SHEET NO.
342	531-1-T	COOK	24	2
CONTRACT NO. 62A27				
FED. ROAD DIST. NO.		ILLINOIS FED. AID PROJECT		

GENERAL NOTES

- BEFORE STARTING ANY EXCAVATION, THE CONTRACTOR SHALL CALL "JULIE" (JOINT UTILITY LOCATION INFORMATION FOR EXCAVATION) AT 8-1-1 OR (800) 892-0123 FOR FIELD LOCATIONS OF BURIED ELECTRIC, TELEPHONE, AND GAS FACILITIES (48 HOUR NOTIFICATION IS REQUIRED).
- THE CONTRACTOR WILL NOT BE ALLOWED TO SET UP A YARD OR FIELD OFFICE ON STATE PROPERTY WITHOUT WRITTEN PERMISSION FROM THE DEPARTMENT.
- SAW CUTTING OF PAVEMENTS, SIDEWALK, CURB & GUTTER, ETC. SHALL BE TO FULL DEPTH AND SHALL RESULT IN A CLEAN STRAIGHT EDGE ON THE PORTION REMAINING. ALL SAW CUTTING SHALL BE CONSIDERED INCLUDED IN THE COST OF THE ITEM REMOVED.
- SAW CUTTING OF EXISTING STORM SEWER TO BE REMOVED SHALL BE INCLUDED IN THE COST OF THE ITEM REMOVED.
- DO NOT SCALE PLANS FOR CONSTRUCTION DIMENSIONS.
- THE CONTRACTOR SHALL USE CARE IN REMOVING OR EXCAVATING NEAR ALL EXISTING ITEMS WHICH WILL REMAIN. ANY DAMAGE DONE TO EXISTING ITEMS BY THE CONTRACTOR SHALL BE REPAIRED AT THE CONTRACTOR'S EXPENSE.
- THE CONTRACTOR SHALL CONTACT THE TRAFFIC CONTROL SUPERVISOR AT (847) 705-4470 A MINIMUM OF 72 HOURS PRIOR TO THE PLACEMENT OF ANY TEMPORARY TRAFFIC CONTROL DEVICES.
- THE CONTRACTOR SHALL CONTACT MS. DEBBIE HANLON THE AREA TRAFFIC FIELD ENGINEER, AT (847) 438-2300 AT LEAST TWO (2) WEEKS PRIOR TO THE PLACEMENT OF PERMANENT PAVEMENT MARKINGS.
- THE CONTRACTOR SHALL BE RESPONSIBLE FOR CONTACTING OWNERS OF ALL UTILITIES PRIOR TO CONSTRUCTION TO DETERMINE THE LOCATION OF ALL UTILITY EQUIPMENT. THE CONTRACTOR SHALL COOPERATE WITH ALL UTILITY OWNERS IN ACCORDANCE WITH THE STANDARD SPECIFICATIONS IF UTILITY RELOCATION, ADJUSTMENT, OR PROTECTION IS NECESSARY.
- THE LOCATION OF EXISTING DRAINAGE STRUCTURES, STORM SEWERS, WATER MAINS, SANITARY SEWERS, AND ANY OTHER PUBLIC OR PRIVATE UTILITIES AS SHOWN ON THE PLANS IS APPROXIMATE AND THEIR EXACT LOCATION IS TO BE DETERMINED IN THE FIELD BY THE CONTRACTOR
- THE CONTRACTOR SHALL BE RESPONSIBLE FOR THE PROTECTION OF ALL UNDERGROUND AND SURFACE UTILITIES EVEN THOUGH THEY MIGHT NOT BE SHOWN ON THE PLANS. ANY UTILITY PROPERTY DAMAGED DURING CONSTRUCTION SHALL BE REPAIRED OR REPLACED TO THE SATISFACTION OF THE ENGINEER.
- THE WORK ASSOCIATED WITH THE CONNECTION OF EXISTING STORM SEWER SYSTEMS TO PROPOSED STORM SEWER STRUCTURES WILL NOT BE PAID FOR SEPARATELY BUT SHALL BE INCLUDED IN THE COST OF THE PROPOSED STRUCTURE BEING INSTALLED.
- THE CONTRACTOR SHALL ONLY BE ALLOWED TO PLACE TRENCH BACKFILL FOR STORM SEWER BY EITHER METHOD 1 OR METHOD 2 ACCORDING TO ARTICLE 550.07 OF THE STANDARD SPECIFICATIONS.
- ANY LOOSE MATERIAL DEPOSITED IN THE FLOW LINE OF DRAINAGE STRUCTURES, WHICH OBSTRUCTS THE NATURAL FLOW OF WATER SHALL BE REMOVED AT THE CLOSE OF EACH WORKING DAY. PRIOR TO ACCEPTANCE OF THE IMPROVEMENT, ALL DRAINAGE STRUCTURES SHALL BE FREE OF DIRT AND DEBRIS. THIS WORK WILL NOT BE PAID FOR SEPARATELY, BUT SHALL BE CONSIDERED AS INCLUDED IN THE UNIT BID PRICES OF THE CONTRACT.
- FOR WORK OUTSIDE THE LIMITS OF BRIDGE APPROACH PAVEMENT, ALL REFERENCES IN THE HIGHWAY STANDARDS AND STANDARD SPECIFICATIONS FOR REINFORCEMENT, DOWEL BARS AND TIE BARS IN PAVEMENT, CURB, GUTTER, COMBINATION CURB AND GUTTER AND MEDIAN, AND CHAIR SUPPORTS FOR CRC PAVEMENT, SHALL BE EPOXY COATED, UNLESS NOTED ON THE PLAN.
- EXISTING BROKEN FRAMES AND LIDS SHALL BE REMOVED AND DISPOSED OF BY THE CONTRACTOR AND SHALL BE REPLACED AS DIRECTED BY THE ENGINEER. REPLACEMENT FRAMES AND LIDS WILL BE PAID FOR ACCORDING TO ARTICLE 109.04 OF THE STANDARD SPECIFICATIONS UNLESS A SEPARATE PAY ITEM HAS BEEN PROVIDED.
- ALL EXCAVATED SOIL SHALL BE PLACED WITHIN THE IDOT RIGHT-OF-WAY, WITHIN THE PROJECT LIMITS AS SHOWN IN THE PLANS.
- CONTRACTOR CONSTRUCTION ACCESS TO IL-53 RAMP BASIN AREA SHALL ONLY BE FROM IL-62. THE CONTRACTOR WILL NOT BE ALLOWED TO ACCESS THE SITE FROM IL-53 EXIT RAMP.

SIGNING AND STRIPING

- SEE IDOT STANDARD DETAIL 780001, DISTRICT ONE DETAIL AND PLAN SHEETS FOR PAVEMENT MARKING DETAILS.
- SIGNS SHALL NOT BE MOVED OR COVERED UNTIL PROGRESS OF WORK NECESSITATES IT.
- THE CONTRACTOR WILL BE REQUIRED TO TEMPORARILY RESET ALL SUCH SIGNS THAT INTERFERE WITH HIS CONSTRUCTION OPERATIONS. ALL SUCH SIGNS MUST BE MAINTAINED STRAIGHT AND CLEAN FOR THE DURATION OF THE TEMPORARY SETTING AND MUST BE RE-ERECTED AT A TEMPORARY LOCATION IN A WORKMANLIKE MANNER AND BE VISIBLE TO THE TRAFFIC FOR WHICH IT IS INTENDED. THIS WORK WILL NOT BE PAID FOR SEPARATELY, BUT SHALL BE INCLUDED IN THE UNIT BID PRICES OF THE CONTRACT.

PROJECT CONTROL

- SET IRON BAR AT THE NORTHWEST CORNER OF IL-62 AND ENTRANCE/EXIT RAMP FOR IL-53. (STA. 135+99.62, 137.4' LT) COORDINATES: 1067742.9500, 1965530.4740 ELEV: 711.916
- SET IRON BAR, APPROXIMATELY 700' NORTH OF IL-62 AND ENTRANCE/EXIT RAMP FOR IL-53. (STA. 135+41.51, 697.78' LT) COORDINATES: 1067834.7030, 1966086.2900 ELEV: 718.960

GENERAL NOTES

EROSION CONTROL

- SOIL DISTURBANCE SHALL BE CONDUCTED IN SUCH A MANNER AS TO MINIMIZE EROSION. AREAS OF THE SITE THAT ARE NOT TO BE GRADED SHALL BE PROTECTED FROM CONSTRUCTION TRAFFIC OR OTHER DISTURBANCE UNTIL FINAL SEEDING IS PERFORMED.
- PROPERTIES AND CHANNELS ADJOINING THE SITE SHALL BE PROTECTED FROM EROSION AND SEDIMENTATION.
- SOIL EROSION AND SEDIMENT CONTROL FEATURES SHALL BE CONSTRUCTED PRIOR TO THE COMMENCEMENT OF HYDROLOGIC DISTURBANCE OF UPLAND AREAS.
- DISTURBED AREAS SHALL BE STABILIZED WITH TEMPORARY OR PERMANENT MEASURES WITHIN ONE (1) CALENDAR DAY FOLLOWING THE END OF ACTIVE HYDROLOGIC DISTURBANCE.
- ALL STORM SEWERS THAT ARE OR WILL BE FUNCTIONING DURING CONSTRUCTION SHALL BE PROTECTED BY AN APPROPRIATE SEDIMENT CONTROL MEASURE.
- IF DEWATERING SERVICES ARE USED, ADJOINING PROPERTIES AND DISCHARGE LOCATIONS SHALL BE PROTECTED FROM EROSION. DISCHARGES SHALL BE ROUTED THROUGH AN EFFECTIVE SEDIMENT CONTROL MEASURE (E.G. SEDIMENT TRAP, SEDIMENT BASIN, OR OTHER APPROPRIATE MEASURE).
- ALL TEMPORARY SOIL EROSION AND SEDIMENT CONTROL MEASURES SHALL BE REMOVED WITHIN THIRTY (30) DAYS AFTER FINAL SITE STABILIZATION IS ACHIEVED OR AFTER THE TEMPORARY MEASURES ARE NO LONGER NEEDED. TRAPPED SEDIMENT AND OTHER DISTURBED SOIL AREAS SHALL BE PERMANENTLY STABILIZED.
- THE CONTRACTOR SHALL PROVIDE ADEQUATE RECEPTACLES FOR THE DEPOSITION OF ALL CONSTRUCTION MATERIAL DEBRIS GENERATED DURING THE DEVELOPMENT PROCESS. THE CONTRACTOR SHALL NOT CAUSE OR PERMIT DUMPING, DEPOSITING, DROPPING, THROWING, DISCARDING OR LEAVING OF CONSTRUCTION MATERIAL DEBRIS UPON OR INTO THE CONSTRUCTION SITE, CHANNEL, WATERS OF THE UNITED STATES. THE CONTRACTOR SHALL MAINTAIN THE CONSTRUCTION SITE FREE OF CONSTRUCTION MATERIAL DEBRIS.
- ALL TEMPORARY AND PERMANENT EROSION AND SEDIMENT CONTROL MEASURES SHALL BE MAINTAINED IN AN EFFECTIVE WORKING CONDITION.
- PERMANENT EROSION CONTROL SHALL INCLUDE TOPSOIL EXCAVATION AND PLACEMENT, TOPSOIL FURNISH AND PLACE, 4", SEEDING, CLASS 2A SEEDING, CLASS 4 (MODIFIED), AND SEEDING, CLASS 4B (MODIFIED) TO BE PROVIDED IN ACCORDANCE WITH ARTICLE 250 OF THE STANDARD SPECIFICATIONS.
- ALL ESC MEASURES WILL BE MAINTAINED IN ACCORDANCE WITH THE IDOT EROSION AND SEDIMENT CONTROL FIELD GUIDE FOR CONSTRUCTION INSPECTION AND IDOT'S BEST MANAGEMENT PRACTICES - MAINTENANCE GUIDE: (HTTP://WWW.IDOT.ILLINOIS.GOV/TRANSPORTATION-SYSTEM/ENVIRONMENT/EROSION-AND-SEDIMENT-CONTROL).
- THE CONTRACTOR WILL ASSUME RESPONSIBILITY FOR MAINTENANCE OF ALL SOIL EROSION CONTROL DURING CONSTRUCTION.
- THE CONTRACTOR SHALL CHECK ALL ESC MEASURES WEEKLY AND AFTER EACH RAINFALL, 0.5 INCHES OR GREATER IN A 24-HOUR PERIOD, OR EQUIVALENT SNOWFALL, ADDITIONALLY DURING WINTER MONTHS. ALL MEASURES SHOULD BE CHECKED BY THE CONTRACTOR AFTER EACH SIGNIFICANT SNOWMELT.
- THE CONTRACTOR SHOULD PROVIDE TO THE RESIDENT ENGINEER A PLAN TO ENSURE THAT A STABILIZED FLOW LINE WILL BE PROVIDED DURING STORM SEWER CONSTRUCTION. THE USE OF A STABILIZED FLOW LINE BETWEEN INSTALLED STORM SEWER AND OPEN DISTURBANCE WILL REDUCE THE POTENTIAL FOR THE OFFSITE DISCHARGE OF SEDIMENT-BEARING WATERS, ESPECIALLY WHEN RAIN IS FORECASTED, SO THAT FLOW WILL NOT ERODE. LACK OF APPROVED PLAN OR FAILURE TO COMPLY WILL RESULT IN AN ESC DEFICIENCY DEDUCTION.
- ANY LOOSE MATERIAL DEPOSITED IN THE FLOW LINE OF DRAINAGE STRUCTURES, WHICH OBSTRUCTS THE NATURAL FLOW OF WATER, SHALL BE REMOVED AT THE CLOSE OF EACH WORKING DAY. PRIOR TO ACCEPTANCE OF THE IMPROVEMENT, ALL DRAINAGE STRUCTURES SHALL BE FREE OF DIRT AND DEBRIS. THIS WORK WILL NOT BE PAID FOR SEPARATELY BUT SHALL BE CONSIDERED AS INCIDENTAL.
- TEMPORARY OR PERMANENT STABILIZATION SHALL BE INITIATED IMMEDIATELY UPON COMPLETION OF DISTURBANCE OR IF THE WORK AREA IS TO BE LEFT UNDISTURBED FOR 14 DAYS OR MORE.
- UNDER NO CIRCUMSTANCE SHALL THE CONTRACTOR PROLONG FINAL GRADING AND SHAPING SO THAT THE ENTIRE PROJECT CAN BE PERMANENTLY SEEDING AT ONE TIME.
- EROSION CONTROL ITEMS ARE CONSIDERED TO BE A HIGH PRIORITY ON THIS CONTRACT. THE CONTRACTOR IS RESPONSIBLE FOR INSTALLATION OF ANY ADDITIONAL EROSION CONTROL MEASURES NECESSARY TO PREVENT EROSION AND SEDIMENTATION AS DETERMINED BY THE RESIDENT ENGINEER.
- THE DEPARTMENT HAS NOT OBTAINED ANY PERMITS FOR OFFSITE BORROW, WASTE, USE (BWU) AREAS. PRIOR TO WORKING IN BWU AREAS, IF THE CONTRACTOR CHOOSES TO USE ACTIVITIES REQUIRING PERMITS IT IS THE CONTRACTORS RESPONSIBILITY TO SECURE THE PROPER PERMITS. IN ADDITION TO THE BORROW REVIEW (BDE 2289) AND USE/WASTE REVIEW (BDE 2290) SUBMITTALS, THE CONTRACTOR SHALL SUBMIT AN EROSION AND SEDIMENT CONTROL (ESC) PLAN FOR EVERY BWU SITE TO THE DEPARTMENT FOR ACCEPTANCE. GUIDELINES FOR ACCEPTABLE BWU PRACTICES CAN BE FOUND IN SECTION II.G.1 AND 2 OF THE SWPPP. THE COST OF ALL MATERIALS AND LABOR NECESSARY TO COMPLY WITH THE ABOVE PROVISIONS TO PREPARE AND IMPLEMENT ESC PLANS WILL NOT BE PAID FOR SEPARATELY, BUT SHALL BE CONSIDERED AS INCLUDED IN THE UNIT BID PRICES OF THE CONTRACT AND NO ADDITIONAL COMPENSATION WILL BE ALLOWED.

COMPANY NAME: HRGreen.com
 PROJECT CONTACT: bhartma
 DATE PLOTTED: 10/15/2015 10:25:15 AM
 FILE NAME: 85100196-52-shi-gen-01.dgn
 PLOT DRIVER: A:\p07_04\cvtcfd
 PLOT LABEL: N



USER NAME	: bhartma	DESIGNED	: BH	REVISED	: -
FILE NAME	: 85100196-52-shi-gen-01.dgn	DRAWN	: DS	REVISED	: -
PLOT SCALE	: N.T.S.	CHECKED	: TH	REVISED	: -
PLOT DATE	: 10/15/2015	DATE	: 10/15/15	REVISED	: -

**STATE OF ILLINOIS
 DEPARTMENT OF TRANSPORTATION**

GENERAL NOTES

SCALE: N.T.S.	SHEET NO. 1 OF 1 SHEETS	STA.	TO STA.
---------------	-------------------------	------	---------

F.A.U. RTE.	SECTION	COUNTY	TOTAL SHEETS	SHEET NO.
342	531-1-T	COOK	24	3
CONTRACT NO. 62A27			ILLINOIS REG. AID PROJECT	

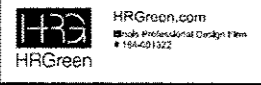
SUMMARY OF QUANTITIES				URBAN	CONSTRUCTION TYPE CODE 0044
CODE NO.	ITEM DESCRIPTION	UNIT	TOTAL QUANTITIES	TOTAL QUANTITIES	DRAINAGE 100% STATE
20100110	TREE REMOVAL (6 TO 15 UNITS DIAMETER)	UNIT	117	117	
20200100	EARTH EXCAVATION	CU YD	15,545	15,545	
20800150	TRENCH BACKFILL	CU YD	86	86	
21101505	TOPSOIL EXCAVATION AND PLACEMENT	CU YD	1,090	1,090	
21101615	TOPSOIL FURNISH AND PLACE, 4"	SO YD	21,495	21,495	
* 25000210	SEEDING, CLASS 2A	ACRE	1.00	1.00	
* 25000400	NITROGEN FERTILIZER NUTRIENT	POUND	675	675	
* 25000500	PHOSPHORUS FERTILIZER NUTRIENT	POUND	675	675	
* 25000600	POTASSIUM FERTILIZER NUTRIENT	POUND	675	675	
* 25100115	MULCH, METHOD 2	ACRE	7.50	7.50	
* 28000250	TEMPORARY EROSION CONTROL SEEDING	POUND	750	750	
28000305	TEMPORARY DITCH CHECKS	FOOT	30	30	
28000400	PERIMETER EROSION BARRIER	FOOT	425	425	
28000510	INLET FILTERS	EACH	6	6	
28100107	STONE RIPRAP, CLASS A4	SQ YD	59	59	
28200200	FILTER FABRIC	SO YD	70	70	
44200050	WELDED WIRE REINFORCEMENT	SQ YD	107	107	
44200974	CLASS 8 PATCHES, TYPE III, 10 INCH	SQ YD	107	107	
44201299	DOWEL BARS 1 1/2"	EACH	50	50	
44213200	SAW CUTS	FOOT	412	412	
44213208	TIE BARS 1 1/4"	EACH	50	50	
54213669	PRECAST REINFORCED CONCRETE FLARED END SECTIONS 24"	EACH	2	2	
550A0050	STORM SEWERS, CLASS A, TYPE 1 12"	FOOT	20	20	
550A0340	STORM SEWERS, CLASS A, TYPE 2 12"	FOOT	10	10	
550A0360	STORM SEWERS, CLASS A, TYPE 2 15"	FOOT	52	52	

SUMMARY OF QUANTITIES				URBAN	CONSTRUCTION TYPE CODE 0044
CODE NO.	ITEM DESCRIPTION	UNIT	TOTAL QUANTITIES	TOTAL QUANTITIES	DRAINAGE 100% STATE
550A0380	STORM SEWERS, CLASS A, TYPE 2 18"	FOOT	35	35	
550A0410	STORM SEWERS, CLASS A, TYPE 2 24"	FOOT	60	60	
550A0710	STORM SEWERS, CLASS A, TYPE 3 24"	FOOT	318	318	
55100700	STORM SEWER REMOVAL 15"	FOOT	52	52	
55100900	STORM SEWER REMOVAL 18"	FOOT	155	155	
60201340	CATCH BASINS, TYPE A, 4'-DIAMETER, TYPE 24 FRAME AND GRATE	EACH	1	1	
60206600	CATCH BASINS, TYPE B, TYPE 7 GRATE	EACH	1	1	
60208240	CATCH BASINS, TYPE C, TYPE 24 FRAME AND GRATE	EACH	1	1	
60221100	MANHOLES, TYPE A, 5'-DIAMETER, TYPE 1 FRAME, CLOSED LID	EACH	1	1	
60237470	INLETS, TYPE A, TYPE 24 FRAME AND GRATE	EACH	2	2	
60500040	REMOVING MANHOLES	EACH	1	1	
60500050	REMOVING CATCH BASINS	EACH	1	1	
60500060	REMOVING INLETS	EACH	1	1	
66400105	CHAIN LINK FENCE, 4'	FOOT	50	50	
67000400	ENGINEER'S FIELD OFFICE, TYPE A	CAL MO	6	6	
67100100	MOBILIZATION	LSUM	1	1	
70107004	PAVEMENT MARKING BLACKOUT TAPE, 4"	FOOT	80	80	
70300150	SHORT TERM PAVEMENT MARKING REMOVAL	SO FT	1,524	1,524	
70300510	PAVEMENT MARKING TAPE, TYPE III - LETTERS AND SYMBOLS	SO FT	72.6	72.6	
70300520	PAVEMENT MARKING TAPE, TYPE III 4"	FOOT	3,919	3,919	
70300540	PAVEMENT MARKING TAPE, TYPE III 6"	FOOT	289	289	
* 78008210	POLYUREA PAVEMENT MARKING TYPE I - LINE 4"	FOOT	20	20	
* 78008230	POLYUREA PAVEMENT MARKING TYPE I - LINE 6"	FOOT	10	10	
* 85000200	MAINTENANCE OF EXISTING TRAFFIC SIGNAL INSTALLATION	EACH	4	4	

24

* SPECIALTY ITEMS

COMPANY NAME: HRGreen.com
 PROJECT CONTACT: HRGreen.com
 CLIENT: HRGreen.com
 DATE PLOTTED: 3/8/2016 9:42:45 AM
 PLOT SCALE: N.T.S.
 PLOT DATE: 3/8/2016



USER NAME: bhar.tna	DESIGNED: BH	REVISED: -
FILE NAME: 86100196-52-sht-sum.dgn	DRAWN: DS	REVISED: -
PLOT SCALE: N.T.S.	CHECKED: TH	REVISED: -
PLOT DATE: 3/8/2016	DATE: 03/08/16	REVISED: -

STATE OF ILLINOIS
 DEPARTMENT OF TRANSPORTATION

IL ROUTE 53
 SUMMARY OF QUANTITIES

SCALE: N.T.S. SHEET NO. 1 OF 2 SHEETS STA. TO STA.

F.A.U. RTE. 342	SECTION 531-1-T	COUNTY COOK	TOTAL SHEETS 24	SHEET NO. 4
FED. ROAD DIST. NO. ILLINOIS			CONTRACT NO. 62A27	

SUMMARY OF QUANTITIES			URBAN	CONSTRUCTION TYPE CODE 0044
CODE NO.	ITEM DESCRIPTION	UNIT	TOTAL QUANTITIES	DRAINAGE 100% STATE
* A2002916	TREE, CELTIS OCCIDENTALIS (COMMON HACKBERRY), 2" CALIPER, BALLED AND BURLAPPED	EACH	5	5
* A2016818	TREE, QUERCUS SCHUETTLI (SWAMP BUR OAK), 1-3/4" CALIPER, BALLED AND BURLAPPED	EACH	4	4
X0322916	PROPOSED STORM SEWER CONNECTION TO EXISTING STORM SEWER	EACH	17	17
X0322917	PROPOSED STORM SEWER CONNECTION TO EXISTING MANHOLE	EACH	1	1
* X2501800	SEEDING, CLASS 4 (MODIFIED)	ACRE	5.50	5.50
* X2502024	SEEDING, CLASS 4B (MODIFIED)	ACRE	1.00	1.00
* X2511630	EROSION CONTROL BLANKET (SPECIAL)	SQ YD	36,300	36,300
X5537900	STORM SEWERS TO BE CLEANED 15"	FOOT	508	508
X5538000	STORM SEWERS TO BE CLEANED 18"	FOOT	658	658
X5538200	STORM SEWERS TO BE CLEANED 24"	FOOT	1,697	1,697
X6020094	MANHOLES, TYPE A, 6'-DIAMETER, TYPE I FRAME, CLOSED LID, RESTRICTOR PLATE	EACH	1	1
X7010216	TRAFFIC CONTROL AND PROTECTION, (SPECIAL)	LSUM	1	1
X7011015	TRAFFIC CONTROL AND PROTECTION (EXPRESSWAYS)	LSUM	1	1
Z0004562	COMBINATION CONCRETE CURB AND GUTTER REMOVAL AND REPLACEMENT	FOOT	170	170
Z0013797	STABILIZED CONSTRUCTION ENTRANCE	SQ YD	160	160
Z0013798	CONSTRUCTION LAYOUT	LSUM	1	1
Z0018500	DRAINAGE STRUCTURES TO BE CLEANED	EACH	10	10
Z0022800	FENCE REMOVAL	FOOT	50	50
Z0030850	TEMPORARY INFORMATION SIGNING	SQ FT	78	78
Z0073510	TEMPORARY TRAFFIC SIGNAL TIMING	EACH	4	4

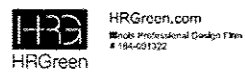
20

* SPECIALTY ITEMS

EARTHWORK CALCULATION

LOCATION	TOTAL CUT (CU YD)	TOPSOIL EXC (CU YD)	EARTH EXC (CU YD)
IL-53 INFIELD	16,635	1,090	15,545

COMPANY NAME: HRGreen
 PROJECT CONTACT: bhartha
 DATE PLOTTED: 3/8/2016 9:42:55 AM
 FILE NAME: 66100198-52-sht-sum.dgn
 PLOT DRIVER: IL_dwt_bhartha.rtg
 PEN TABLE: pen.tbl



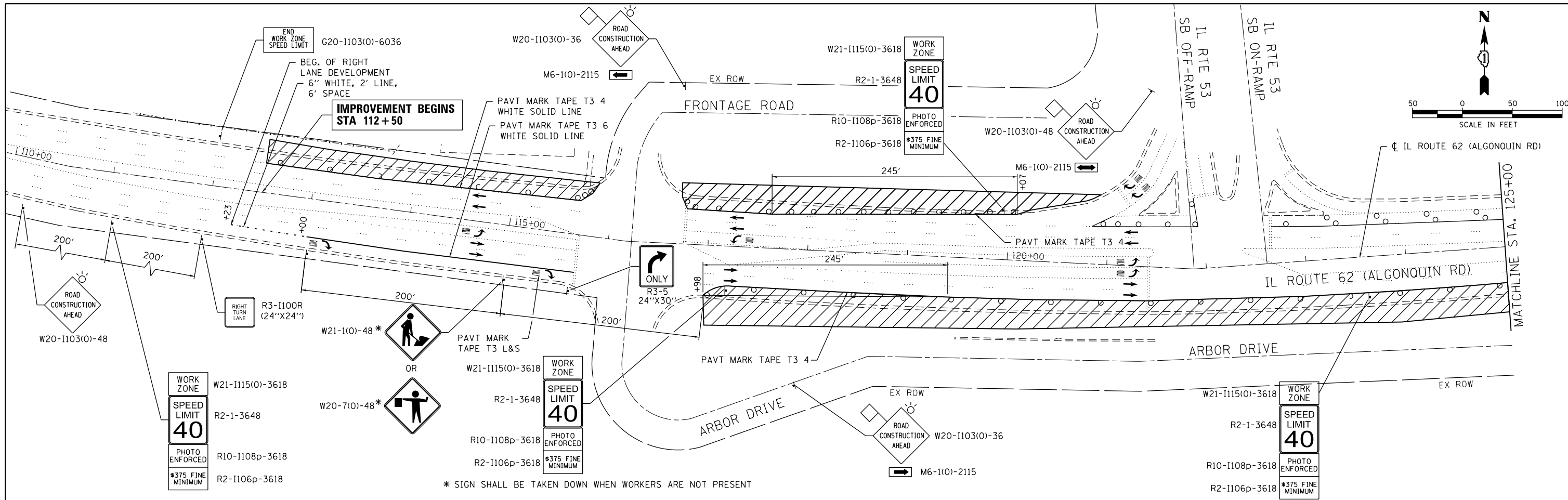
USER NAME: bhartha	DESIGNED: BH	REVISED: -
FILE NAME: 66100198-52-sht-sum.dgn	DRAWN: DS	REVISED: -
PLOT SCALE: N.T.S.	CHECKED: TH	REVISED: -
PLOT DATE: 3/8/2016	DATE: 03/08/16	REVISED: -

STATE OF ILLINOIS
 DEPARTMENT OF TRANSPORTATION

IL ROUTE 53
 SUMMARY OF QUANTITIES

SCALE: N.T.S. SHEET NO. 2 OF 2 SHEETS STA. TO STA.

F.A.U. RTE.	SECTION	COUNTY	TOTAL SHEETS	SHEET NO.
342	531-1-T	COOK	24	5
FED. ROAD DIST. NO.			ILLINOIS FED. AID PROJECT	
			CONTRACT NO. 62A27	



* SIGN SHALL BE TAKEN DOWN WHEN WORKERS ARE NOT PRESENT

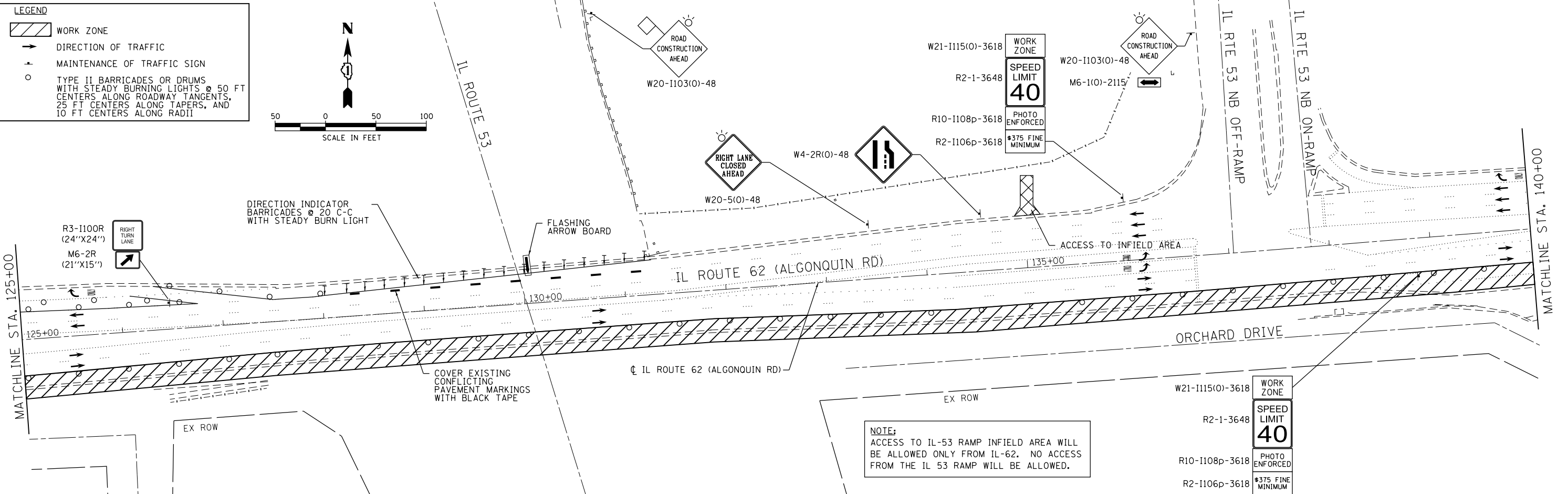
LEGEND

- WORK ZONE
- DIRECTION OF TRAFFIC
- MAINTENANCE OF TRAFFIC SIGN
- TYPE II BARRICADES OR DRUMS WITH STEADY BURNING LIGHTS @ 50 FT CENTERS ALONG ROADWAY TANGENTS, 25 FT CENTERS ALONG TAPERS, AND 10 FT CENTERS ALONG RADII

SCALE IN FEET

50 0 50 100

SCALE IN FEET



NOTE:
ACCESS TO IL-53 RAMP INFIELD AREA WILL BE ALLOWED ONLY FROM IL-62. NO ACCESS FROM THE IL 53 RAMP WILL BE ALLOWED.

COMPANY NAME: HRGreen.com
 PROJECT CONTACT: bhartha
 DATE PLOTTED: 10/15/2015 12:25:30 PM
 FILE NAME: 86100196-52-sht-mot-01.dgn
 PLOT DRIVER: ILprof.dwt
 PLOT TABLE: PLOT LABEL.tbl



USER NAME = bhartha	DESIGNED - BH	REVISED -
FILE NAME = 86100196-52-sht-mot-01.dgn	DRAWN - DS	REVISED -
PLOT SCALE = 1"=50'	CHECKED - TH	REVISED -
PLOT DATE = 10/15/2015	DATE - 10/15/15	REVISED -

**STATE OF ILLINOIS
DEPARTMENT OF TRANSPORTATION**

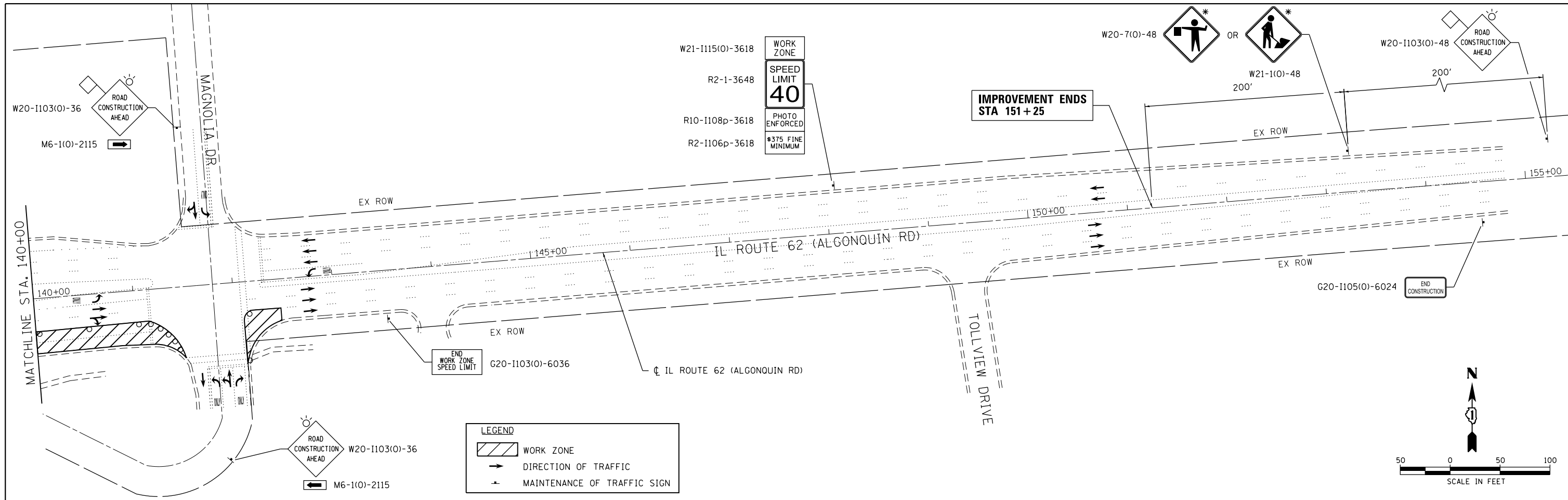
**IL ROUTE 62
SUGGESTED MAINTENANCE OF TRAFFIC**

SCALE: 1"=50' SHEET NO. 1 OF 2 SHEETS STA. 112+50 TO STA. 142+50

RTE.	SECTION	COUNTY	TOTAL SHEETS	SHEET NO.
342	531-1-T	COOK	24	6

CONTRACT NO. 62A27

FED. ROAD DIST. NO. ILLINOIS FED. AID PROJECT



COMPANY NAME: HRGreen.com
 PROJECT CONTACT: bhartma
 DATE PLOTTED: 10/15/2015 12:25:33 PM
 FILE NAME: 86100196-52-sht-mot-02.dgn
 PLOT DRIVER: ILprof.dwt
 PEN TABLE: PLOTLABEL.tbl

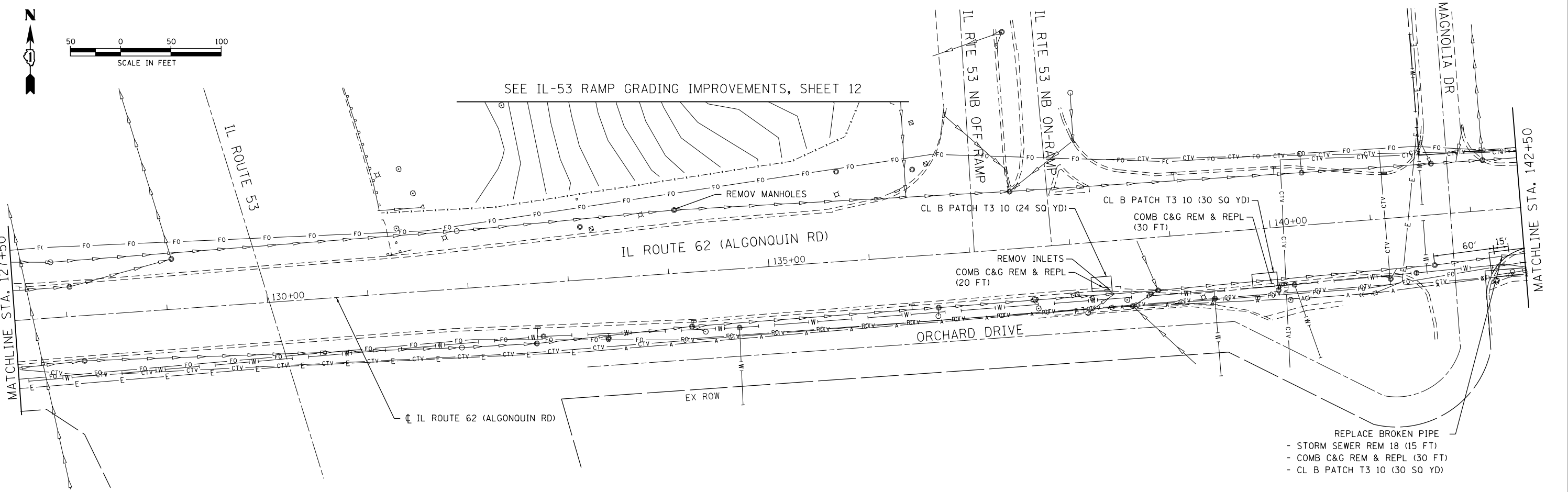
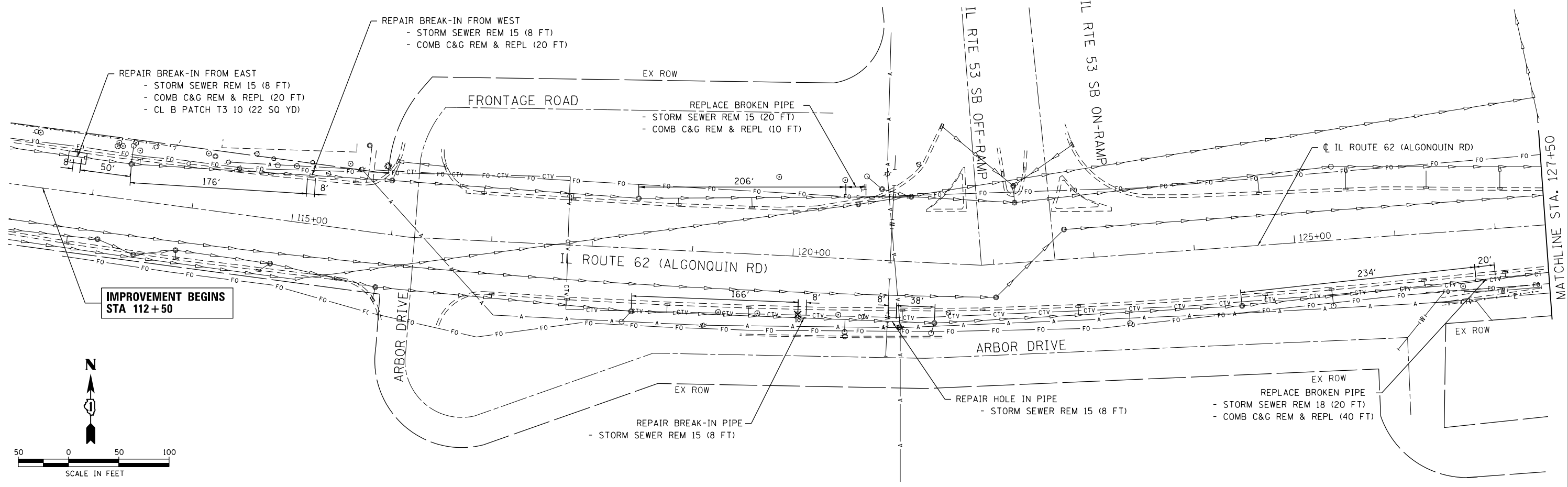


USER NAME = bhartma	DESIGNED - BH	REVISED -
FILE NAME = 86100196-52-sht-mot-02.dgn	DRAWN - DS	REVISED -
PLOT SCALE = 1"=50'	CHECKED - TH	REVISED -
PLOT DATE = 10/15/2015	DATE - 10/15/15	REVISED -

STATE OF ILLINOIS
DEPARTMENT OF TRANSPORTATION

IL ROUTE 62 SUGGESTED MAINTENANCE OF TRAFFIC	
SCALE: 1"=50'	SHEET NO. 2 OF 2 SHEETS
STA. 142+50	TO STA. 151+25

RTE.	SECTION	COUNTY	TOTAL SHEETS	SHEET NO.
342	531-1-T	COOK	24	7
FED. ROAD DIST. NO. ILLINOIS FED. AID PROJECT			CONTRACT NO. 62A27	



COMPANY NAME: HRGreen
 PROJECT CONTACT: [Redacted]
 DATE PLOTTED: 4/19/2016 9:30:00 AM
 FILE NAME: 86100196-52-sht-rem-01.dgn
 PLOT DRIVER: ILprof.dwg
 PEN TABLE: plc-table.tbl



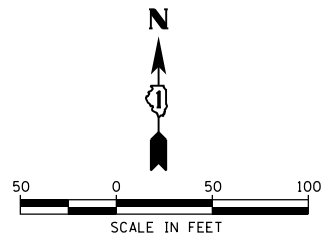
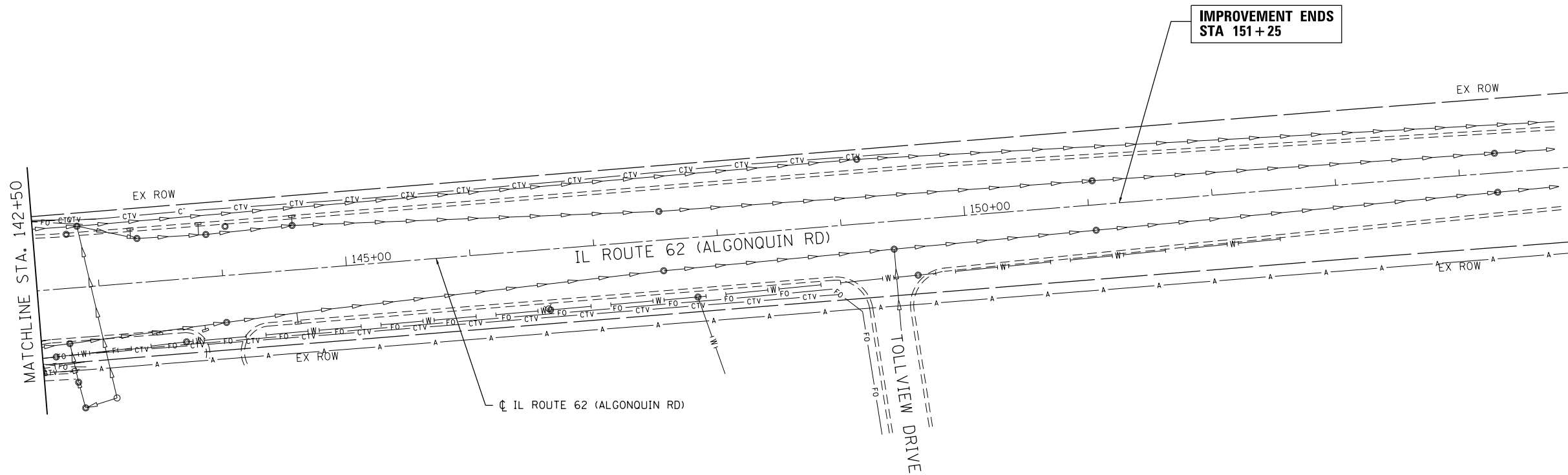
USER NAME = bhartha	DESIGNED - BH	REVISED -
FILE NAME = 86100196-52-sht-rem-01.dgn	DRAWN - DS	REVISED -
PLOT SCALE = 1"=50'	CHECKED - TH	REVISED -
PLOT DATE = 4/19/2016	DATE - 10/15/15	REVISED -

STATE OF ILLINOIS
DEPARTMENT OF TRANSPORTATION

SCALE: 1"=50'	SHEET NO. 1 OF 2 SHEETS	STA. 112+50 TO STA. 142+50
---------------	-------------------------	----------------------------

IL ROUTE 62
REMOVAL PLAN

RTE.	SECTION	COUNTY	TOTAL SHEETS	SHEET NO.
342	531-1-T	COOK	24	8
FED. ROAD DIST. NO. ILLINOIS FED. AID PROJECT			CONTRACT NO. 62A27	



COMPANY NAME: #COMPANY NAME#
 PROJECT CONTACT: #PROJECT CONTACT#
 DATE PLOTTED: 10/15/2015 12:25:45 PM
 FILE NAME: 86100196-52-sht-rem-02.dgn
 PLOT DRIVER: IL:\pdf\dwg\pltfq
 PEN TABLE: PLOTLABEL.tbl



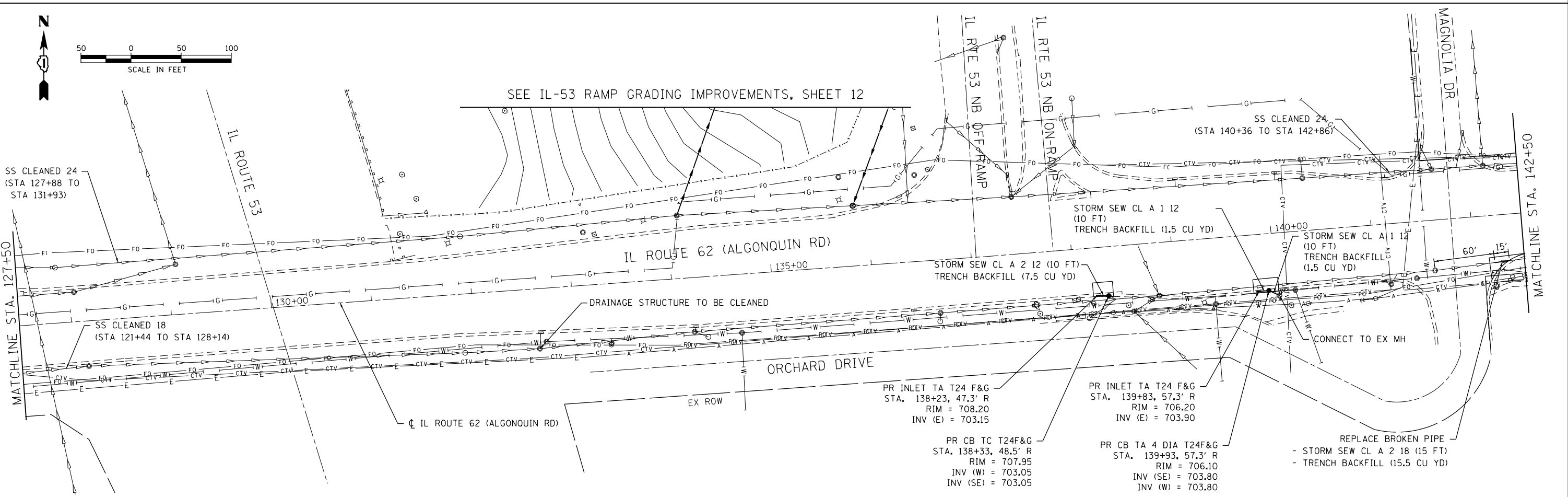
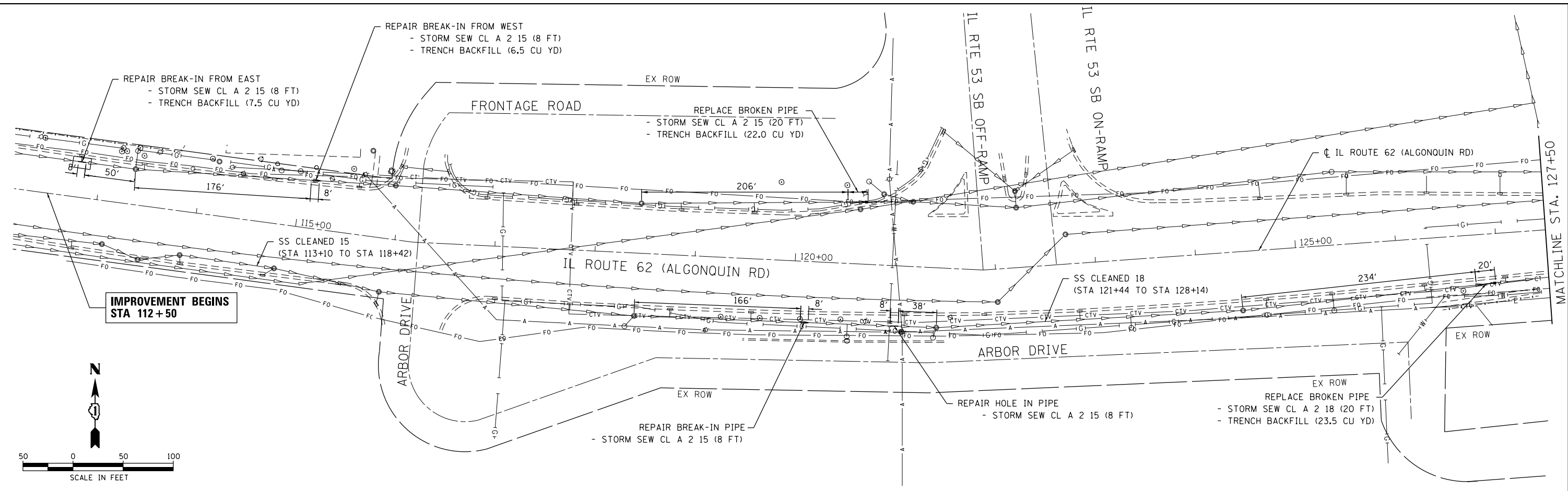
USER NAME = bhartma	DESIGNED - BH	REVISED -
FILE NAME = 86100196-52-sht-rem-02.dgn	DRAWN - DS	REVISED -
PLOT SCALE = 1"=50'	CHECKED - TH	REVISED -
PLOT DATE = 10/15/2015	DATE - 10/15/15	REVISED -

**STATE OF ILLINOIS
 DEPARTMENT OF TRANSPORTATION**

**IL ROUTE 62
 REMOVAL PLAN**

SCALE: 1"=50' SHEET NO. 2 OF 2 SHEETS STA. 142+50 TO STA. 151+25

RTE.	SECTION	COUNTY	TOTAL SHEETS	SHEET NO.
342	531-1-T	COOK	24	9
CONTRACT NO.				62A27
FED. ROAD DIST. NO. ILLINOIS FED. AID PROJECT				



COMPANY NAME: HRGreen
 PROJECT CONTACT: bhartha
 DATE PLOTTED: 4/19/2016 9:30:05 AM
 FILE NAME: 86100196-52-sht-drain-01.dgn
 PLOT DRIVER: ILpadf.bwshrcfg
 PEN TABLE: plc-table.tbl

HRGreen.com
 Illinois Professional Design Firm
 #184-001322

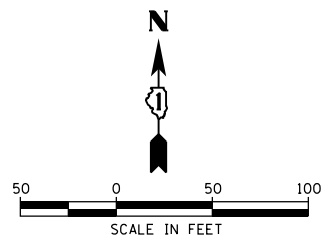
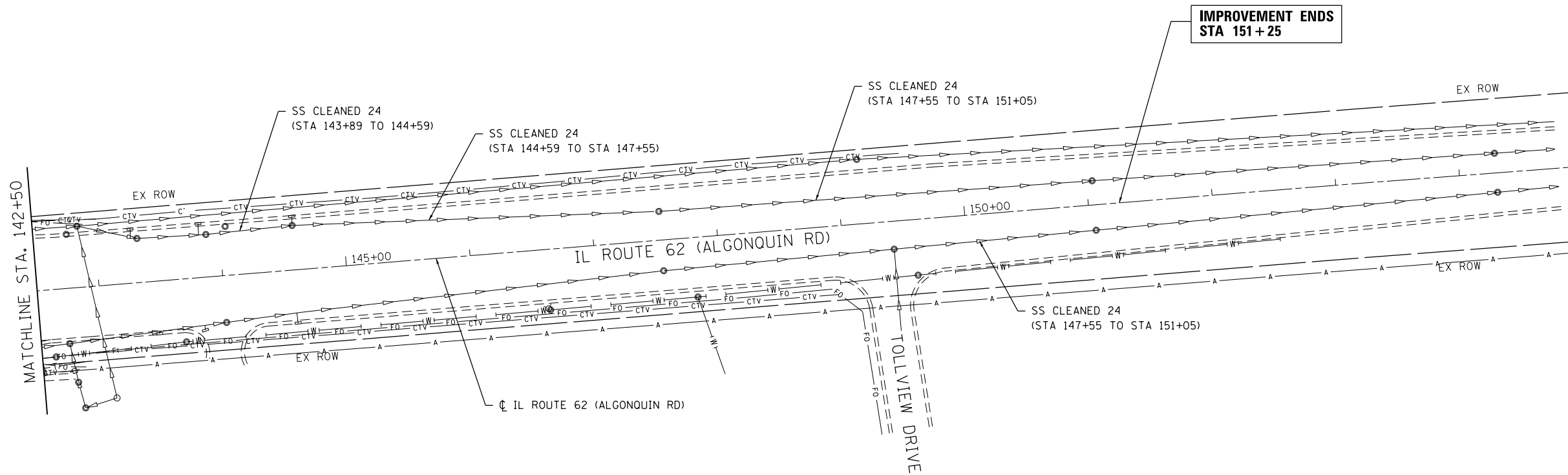
USER NAME = bhartha	DESIGNED - BH	REVISED -
FILE NAME = 86100196-52-sht-drain-01.dgn	DRAWN - DS	REVISED -
PLOT SCALE = 1"=50'	CHECKED - TH	REVISED -
PLOT DATE = 4/19/2016	DATE - 10/15/15	REVISED -

STATE OF ILLINOIS
DEPARTMENT OF TRANSPORTATION

IL ROUTE 62
DRAINAGE PLAN

SCALE: 1"=50' SHEET NO. 1 OF 2 SHEETS STA. 112+50 TO STA. 142+50

RTE.	SECTION	COUNTY	TOTAL SHEETS	SHEET NO.
342	531-1-T	COOK	24	10
CONTRACT NO. 62A27				
FED. ROAD DIST. NO. ILLINOIS FED. AID PROJECT				



COMPANY NAME: HRGreen
 PROJECT CONTACT: HRGreen
 DATE PLOTTED: 10/15/2015 12:25:52 PM
 FILE NAME: 86100196-52-sht-drain-02.dgn
 PLOT DRIVER: ILpdf.dwt
 PEN TABLE: PLOTLABEL.tbl



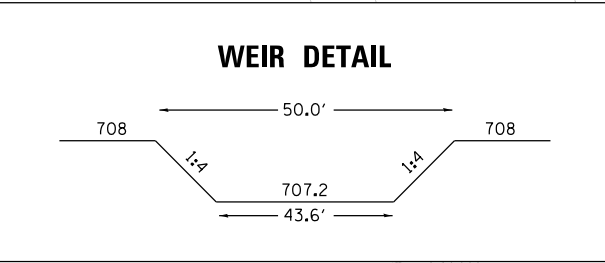
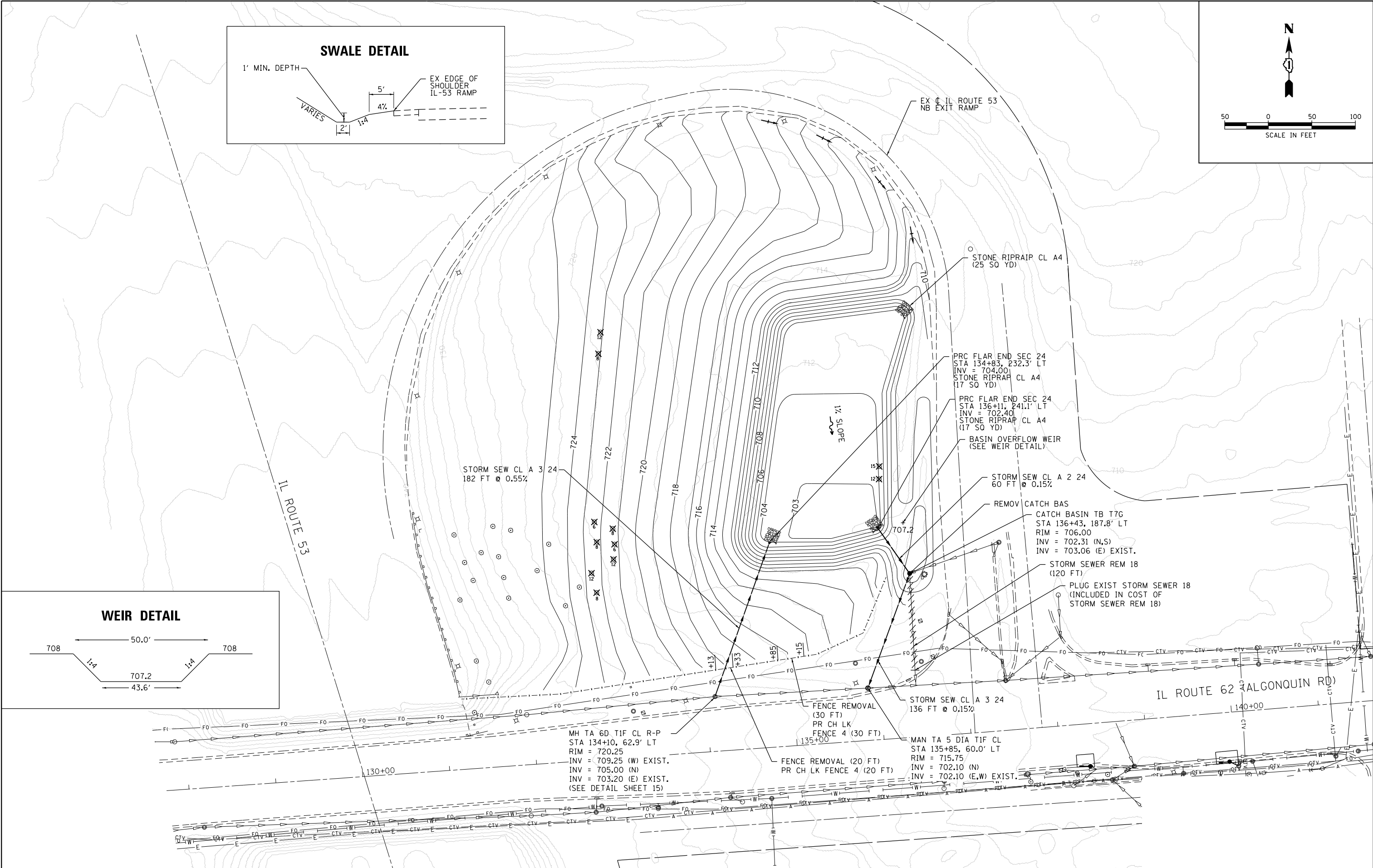
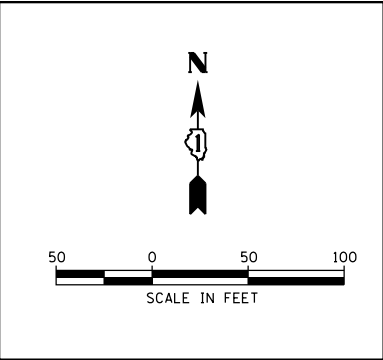
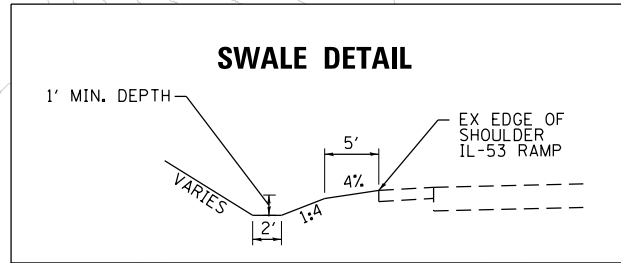
USER NAME = bhartma	DESIGNED - BH	REVISED -
FILE NAME = 86100196-52-sht-drain-02.dgn	DRAWN - DS	REVISED -
PLOT SCALE = 1"=50'	CHECKED - TH	REVISED -
PLOT DATE = 10/15/2015	DATE - 10/15/15	REVISED -

**STATE OF ILLINOIS
 DEPARTMENT OF TRANSPORTATION**

**IL ROUTE 62
 DRAINAGE PLAN**

SCALE: 1"=50' SHEET NO. 2 OF 2 SHEETS STA. 142+50 TO STA. 151+25

RTE.	SECTION	COUNTY	TOTAL SHEETS	SHEET NO.
342	531-1-T	COOK	24	11
CONTRACT NO. 62A27				
FED. ROAD DIST. NO. ILLINOIS FED. AID PROJECT				



COMPANY NAME: HRGreen.com
 PROJECT CONTACT: bhartha
 DATE PLOTTED: 10/15/2015 12:25:58 PM
 FILE NAME: 86100196-52-sht-grading.dgn
 PLOT DRIVER: ILprof.dwt
 PEN TABLE: PLOT LABEL.tbl

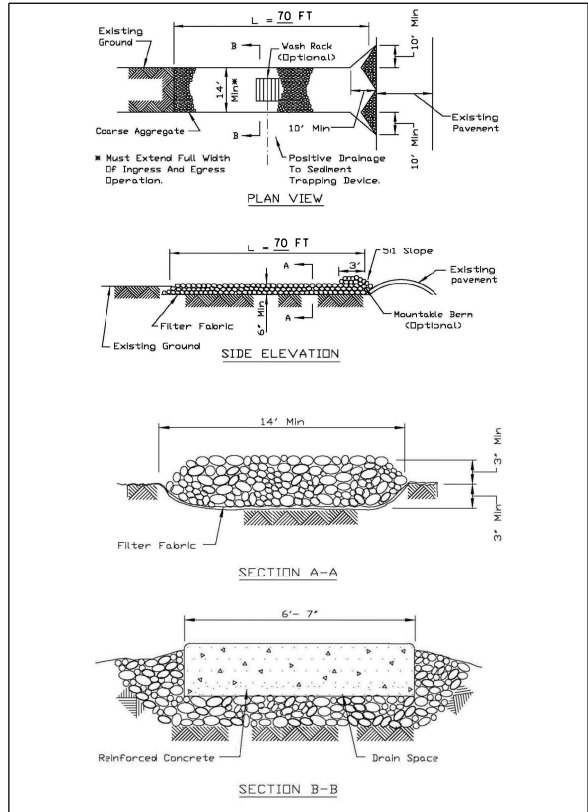
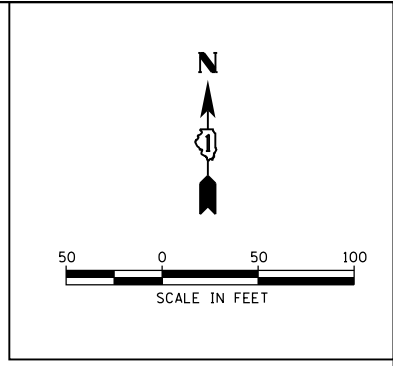


USER NAME = bhartha	DESIGNED - BH	REVISED -
FILE NAME = 86100196-52-sht-grading.dgn	DRAWN - DS	REVISED -
PLOT SCALE = 1"=50'	CHECKED - TH	REVISED -
PLOT DATE = 10/15/2015	DATE - 10/15/15	REVISED -

**STATE OF ILLINOIS
 DEPARTMENT OF TRANSPORTATION**

IL ROUTE 53 RAMP GRADING IMPROVEMENTS	
SCALE: 1"=50'	SHEET NO. 1 OF 1 SHEETS
STA.	TO STA.

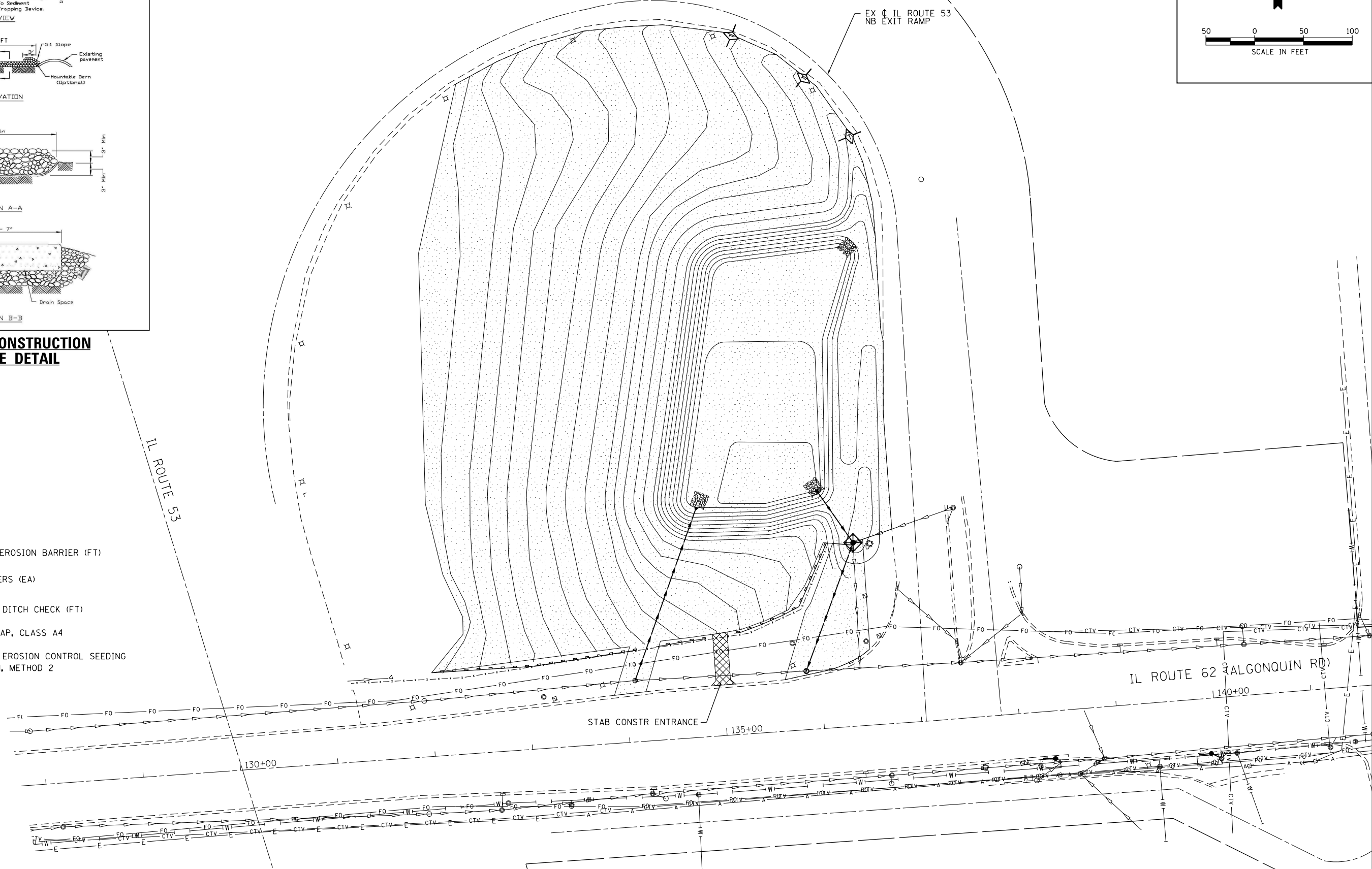
F.A.U. RTE. 342	SECTION 531-1-T	COUNTY COOK	TOTAL SHEETS 24	SHEET NO. 12
FED. ROAD DIST. NO.		ILLINOIS FED. AID PROJECT		
		CONTRACT NO. 62A27		



STABILIZED CONSTRUCTION ENTRANCE DETAIL

LEGEND

- PERIMETER EROSION BARRIER (FT)
- INLET FILTERS (EA)
- TEMPORARY DITCH CHECK (FT)
- STONE RIPRAP, CLASS A4
- TEMPORARY EROSION CONTROL SEEDING WITH MULCH, METHOD 2



COMPANY NAME: HRGreen
 PROJECT CONTACT: [Name]
 DATE PLOTTED: 10/15/2015 12:26:03 PM
 FILE NAME: 86100196-52-sht-eros.dgn
 PLOT DRIVER: ILpdf.dwg/rlcfq
 PLOT TABLE: PLOTLABEL.tbl



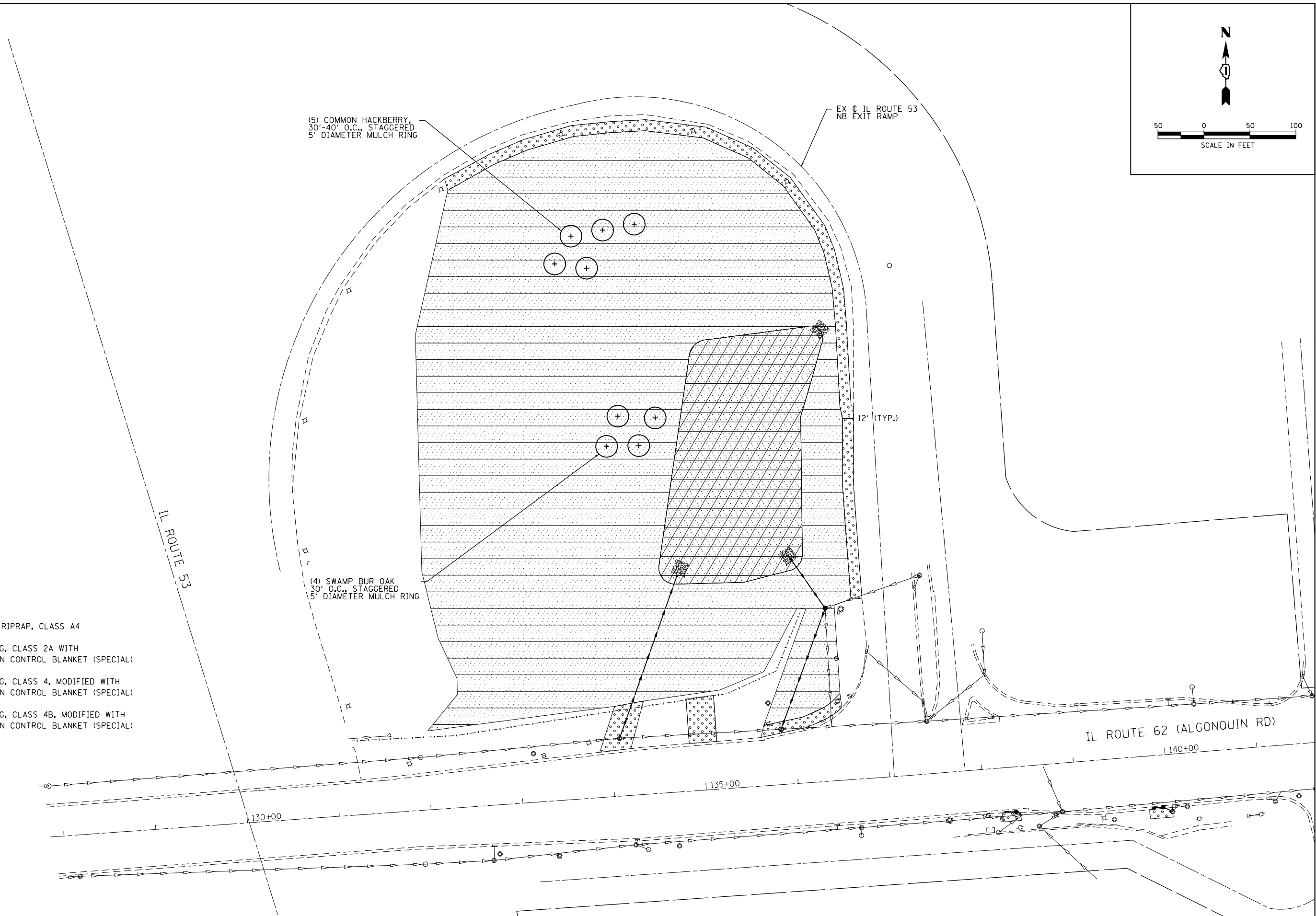
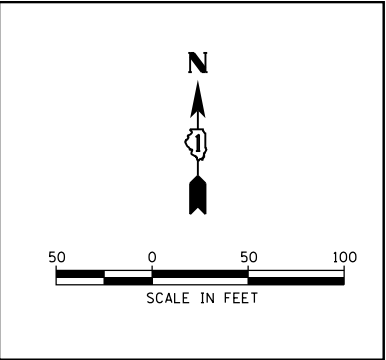
USER NAME = bhartha	DESIGNED - BH	REVISED -
FILE NAME = 86100196-52-sht-eros.dgn	DRAWN - DS	REVISED -
PLOT SCALE = 1"=50'	CHECKED - TH	REVISED -
PLOT DATE = 10/15/2015	DATE - 10/15/15	REVISED -

**STATE OF ILLINOIS
 DEPARTMENT OF TRANSPORTATION**


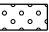
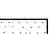

**IL ROUTE 53 RAMP
 EROSION CONTROL PLAN**

SCALE: 1"=50' SHEET NO. 1 OF 1 SHEETS STA. TO STA.

F.A.U. RTE. 342	SECTION 531-1-T	COUNTY COOK	TOTAL SHEETS 24	SHEET NO. 13
FED. ROAD DIST. NO. ILLINOIS FED. AID PROJECT			CONTRACT NO. 62A27	



LEGEND

-  STONE RIPRAP, CLASS A4
-  SEEDING, CLASS 2A WITH EROSION CONTROL BLANKET (SPECIAL)
-  SEEDING, CLASS 4, MODIFIED WITH EROSION CONTROL BLANKET (SPECIAL)
-  SEEDING, CLASS 4B, MODIFIED WITH EROSION CONTROL BLANKET (SPECIAL)

COMPANY NAME: #COMPANY NAME#
 PROJECT CONTACT: #PROJECT CONTACT#
 DATE PLOTTED: 10/15/2015 12:26:21 PM
 FILE NAME: 86100196-52-sht-restore.dgn
 PLOT DRIVER: ILpdf.dwt
 PEN TABLE: PLOT LABEL.tbl



USER NAME = bhartha	DESIGNED - BH	REVISED -
FILE NAME = 86100196-52-sht-restore.dgn	DRAWN - DS	REVISED -
PLOT SCALE = 1"=50'	CHECKED - TH	REVISED -
PLOT DATE = 10/15/2015	DATE - 10/15/15	REVISED -

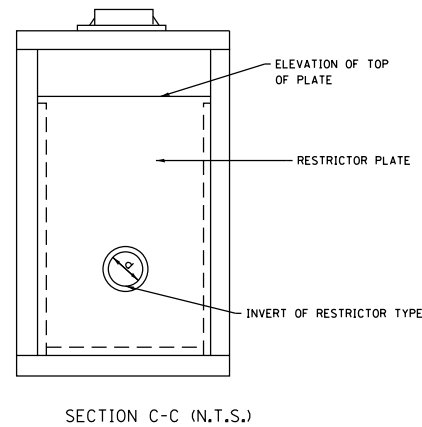
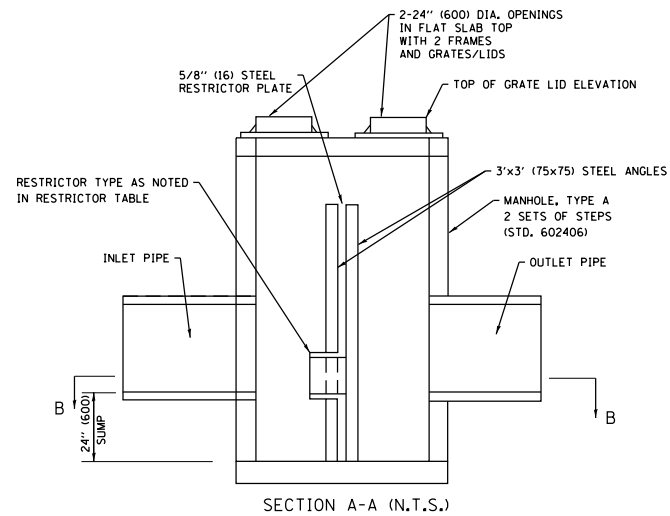
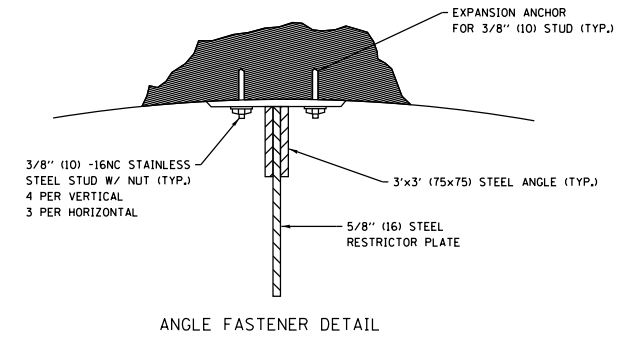
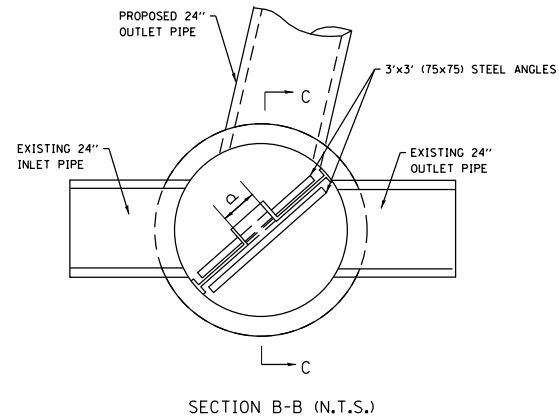
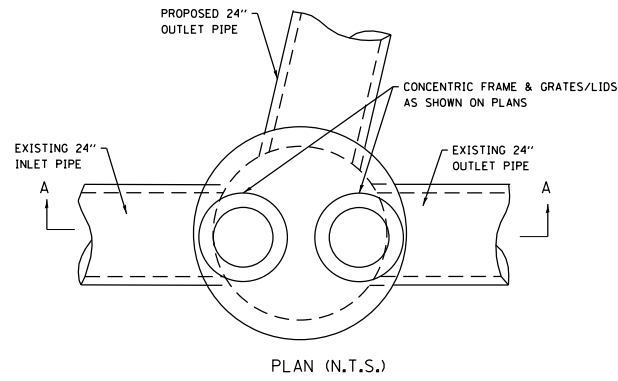
**STATE OF ILLINOIS
 DEPARTMENT OF TRANSPORTATION**

**IL ROUTE 53 RAMP
 LANDSCAPING PLAN**

SCALE: 1"=50' SHEET NO. 1 OF 1 SHEETS STA. TO STA.

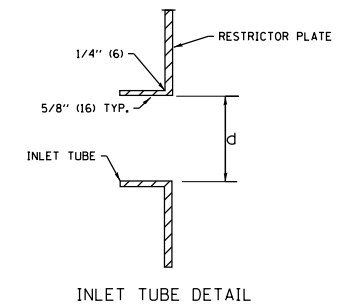
F.A.U. RTE.	SECTION	COUNTY	TOTAL SHEETS	SHEET NO.
342	531-1-T	COOK	24	14
FED. ROAD DIST. NO.			ILLINOIS FED. AID PROJECT	

CONTRACT NO. 62A27

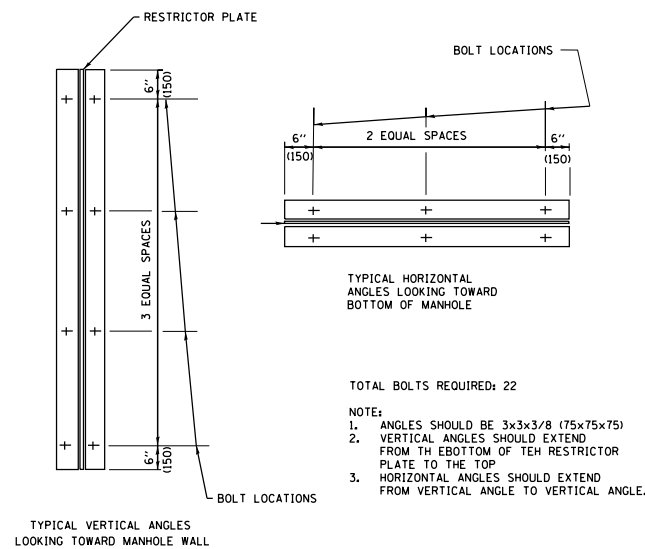


NOTES:

1. ALL STEEL ANGLES AND PLATES TO BE GALVANIZED AFTER FABRICATION
2. ALL RESTRICTOR PLATES, ANGLES AND HARDWARE TO BE INCLUDED IN THE COST OF THE MANHOLE BASIS OF PAYMENT: "MANHOLES, TYPE A, 6'-DIAMETER, TYPE 1 FRAME, CLOSED LID, RESTRICTOR PLATE" EACH



STATION	MANHOLE DIAMETER	FRAME AND GRATE	RESTRICTOR TYPE	INSIDE RESTRICTOR TYPE DIAMETER	INVERT OF RESTRICTOR TYPE	ELEVATION OF TOP OF PLATE OVERFLOW
134+10	6	T1 F&G CL	3	12"	703.20	707.2



RESTRICTOR TYPE					
1	2	3	4	5	6
RE-ENTRANT TUBE	SHARP EDGED	SQUARE EDGED	RE-ENTRANT TUBE	SQUARE EDGED	ROUNDED
LENGTH 0.5 TO 1 DIA		STREAM CLEARS SIDES	LENGTH: 2.5 DIA.	LENGTH: 2.5 DIA.	
C=.52	C=.61	C=.61	C=.73	C=.82	C=.98

VALUES OF "C" FOR CIRCULAR AND SQUARE ORIFICES

TOTAL BOLTS REQUIRED: 22

- NOTE:
1. ANGLES SHOULD BE 3x3x3/8 (75x75x75)
 2. VERTICAL ANGLES SHOULD EXTEND FROM THE BOTTOM OF THE RESTRICTOR PLATE TO THE TOP
 3. HORIZONTAL ANGLES SHOULD EXTEND FROM VERTICAL ANGLE TO VERTICAL ANGLE.

ALL DIMENSIONS ARE IN INCHES (MILLIMETERS) UNLESS OTHERWISE SHOWN.

COMPANY NAME: HRGreen.com
 PROJECT CONTACT: bhartma
 DATE PLOTTED: 10/15/2015 12:26:30 PM
 FILE NAME: 86100196-52-sht-detail-restr
 PLOT DRIVER: ILpdf.dwt
 PLOT TABLE: PLOT LABEL.tbl



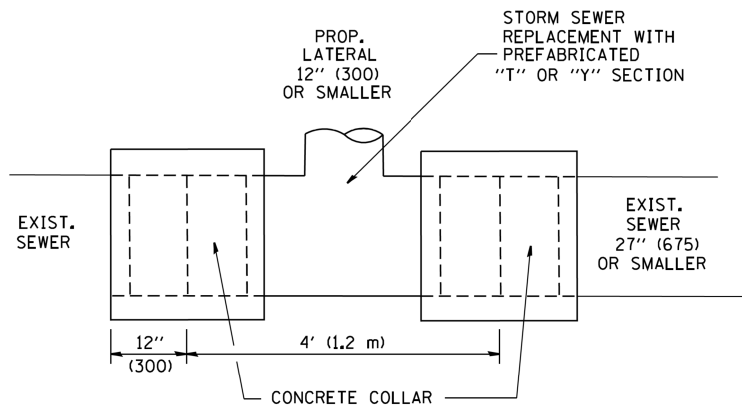
USER NAME = bhartma	DESIGNED - BH	REVISED -
FILE NAME = 86100196-52-sht-detail-restr	DRAWN - DS	REVISED -
PLOT SCALE = N.T.S.	CHECKED - TH	REVISED -
PLOT DATE = 10/15/2015	DATE - 10/15/15	REVISED -

STATE OF ILLINOIS
 DEPARTMENT OF TRANSPORTATION

CONSTRUCTION DETAILS
 RESTRICTOR STRUCTURE

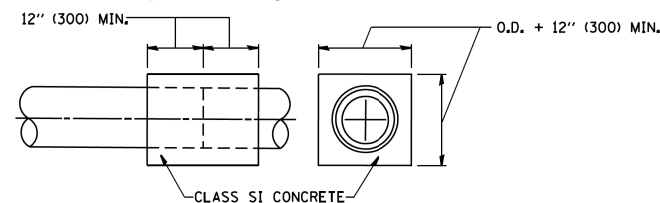
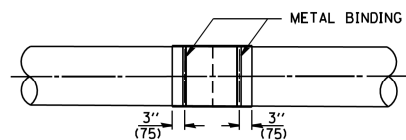
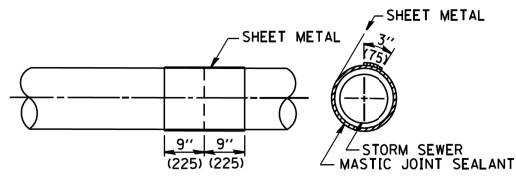
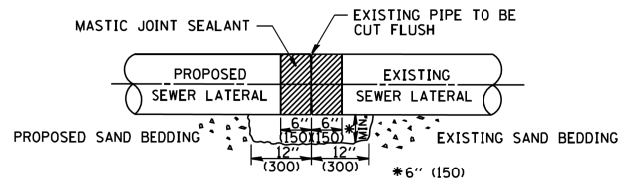
SCALE: N.T.S. SHEET NO. 1 OF 10 SHEETS STA. TO STA.

F.A.U. RTE.	SECTION	COUNTY	TOTAL SHEETS	SHEET NO.
342	531-1-T	COOK	24	15
CONTRACT NO. 62A27				
FED. ROAD DIST. NO. ILLINOIS FED. AID PROJECT				



DETAIL "A"

LATERAL CONNECTION TO EXISTING SEWER OF 27" (675) OR SMALLER

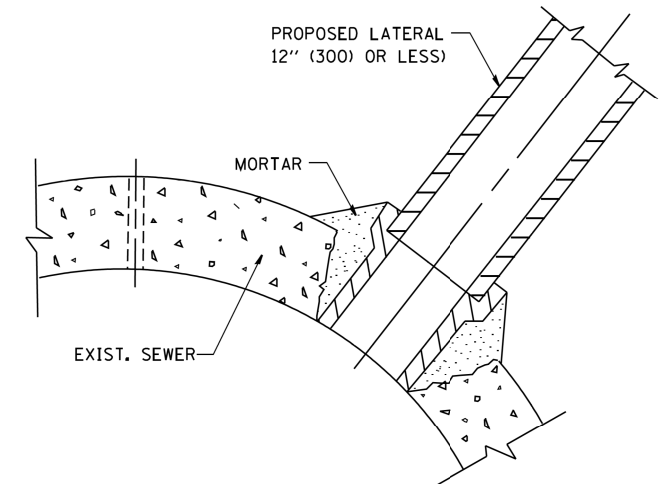


DETAIL "B"

CLASS SI CONCRETE COLLAR

CONSTRUCTION SEQUENCE

1. CUT THE EXISTING END OF THE PIPE SO AS TO PRESENT A FLUSH BUTT JOINT. BRUSH AND CLEAN ALL PIPES.
2. APPLY THE MASTIC JOINT SEALANT TO THE FIRST 6" (150) OF EACH PIPE.
3. BUTT THE PIPES TOGETHER LEAVING A MINIMUM OF 12' x 6' (300 x 150) DEEP EXCAVATION UNDER AND AROUND EACH PIPE END.
4. CUT A PIECE OF SHEET METAL GAGE NO. 19 1.1 (0.0418) 18" (450) WIDE BY THE OUTSIDE CIRCUMFERENCE OF THE PIPE PLUS 3" (75) LONG.
5. WRAP THE SHEET METAL AROUND THE PIPES, 9" (225) ON EACH SIDE OF THE JOINT, STARTING AT THE TOP OF THE PIPE.
6. LAP THE SHEET METAL AT LEAST 3" (75) AT THE TOP OF THE PIPE AND PLACE THE MASTIC JOINT SEALANT BETWEEN THE LAP.
7. PLACE TWO METAL BANDS AROUND THE SHEET METAL AND TIGHTEN.
8. WIPE OFF ANY EXCESS MASTIC JOINT SEALANT THAT OOOZES OUT FROM BETWEEN THE SHEET METAL AND THE PIPES.
9. PLACE CLASS SI CONCRETE AROUND THE JOINT.



DETAIL "C"

PROPOSED LATERAL CONNECTION TO EXISTING SEWER OF 30" (750) OR LARGER

NOTES

MATERIAL

MATERIAL USED FOR THE TEE OR WYE SECTION SHALL BE COMPATIBLE WITH THE EXISTING STORM SEWER OR THE PROPOSED STORM SEWER.

CONSTRUCTION METHODS

I. THIS WORK SHALL BE CONSTRUCTED IN CONFORMANCE WITH THE APPLICABLE PORTIONS OF SECTION 550 OF THE STANDARD SPECIFICATIONS.

II. CONNECTION TO AN EXISTING STORM SEWER SHALL BE BY EITHER OF THE FOLLOWING METHODS:

- A) PROPOSED STORM SEWER CONNECTION TO EXISTING SEWER OF 27" (675) OR SMALLER SEE DETAIL "A" AND "B".
- B) PROPOSED STORM SEWER CONNECTION TO EXISTING SEWER OF 30" (750) OR LARGER SEE DETAIL "C".

IF THE EXISTING SEWER PIPE IS CRACKED, BROKEN OR OTHERWISE DAMAGED BY THE CONTRACTOR IN MAKING THE CIRCULAR OPENING, THE CONTRACTOR SHALL REPLACE THAT SECTION OF PIPE WITH PIPE EQUAL AND SIMILAR IN ALL RESPECTS TO THE PIPE IN THE EXISTING SEWER, IN A CAREFUL WORKMANLIKE MANNER, WITHOUT EXTRA COMPENSATION.

GENERAL

CARE MUST BE TAKEN TO PREVENT DEBRIS FROM ENTERING THE SEWER. ALL DEBRIS WHICH ENTERS THE SEWER MUST BE REMOVED. THE SEWER MUST BE LEFT CLEAN AND UNOBSTRUCTED UPON COMPLETION OF THE CONTRACT.

CARE MUST BE TAKEN TO PREVENT ANY PART OF THE NEW PIPE CONNECTION FROM PROJECTING INTO THE EXISTING SEWER.

BASIS OF PAYMENT

TEE OR WYE CONNECTIONS SHALL BE PAID FOR AT THE CONTRACT UNIT PRICE EACH FOR STORM SEWER TEE OR WYE OF THE TYPE AND SIZE SPECIFIED IN THE PLANS. THIS PRICE SHALL INCLUDE ALL EXCAVATION OF THE TRENCH, REMOVAL OF THE EXISTING STORM SEWER, FURNISHING AND INSTALLING THE SPECIFIED TEE OR WYE SECTION, FURNISHING AND INSTALLING THE REQUIRED CONCRETE COLLAR, AND ALL OTHER MATERIAL NECESSARY TO COMPLETE THIS WORK AS SHOWN AND SPECIFIED.

REMOVAL AND REINSTALLATION OF EXISTING STORM SEWER ADJACENT TO THE PROPOSED TEE OR WYE SECTION, FOR THE PURPOSE OF FACILITATING THE INSTALLATION OF THE TEE OR WYE SECTION, WILL NOT BE PAID FOR SEPARATELY BUT SHALL BE INCLUDED IN THE UNIT PRICE BID FOR THE WORK.

TRENCH BACKFILL, EXCAVATION IN ROCK AND REMOVAL AND REPLACEMENT OF UNSUITABLE MATERIAL BELOW PLAN BEDDING GRADE WILL BE PAID FOR SEPARATELY.

CONCRETE COLLAR FOR CONNECTING A PROPOSED STORM SEWER TO AN EXISTING STORM SEWER WILL NOT BE PAID FOR SEPARATELY BUT SHALL BE INCLUDED IN THE COST OF THE PROPOSED STORM SEWER.

ALL DIMENSIONS ARE IN INCHES (MILLIMETERS) UNLESS OTHERWISE SHOWN.

COMPANY NAME: #COMPANY NAME#
 PROJECT CONTACT: #PROJECT CONTACT#
 DATE PLOTTED: 9/29/2015 9:42:25 AM
 FILE NAME: 86100196-52-sh1-dst-081-bd07.dgn
 PLOT DRIVER: ILplot.dwg
 PEN TABLE: PLOTTABLE.tbl

FILE NAME =	USER NAME = geglano	DESIGNED - M. DE YONG	REVISED - M. DE YONG 05-08-92
W:\dststd\22x34\bd07.dgn		DRAWN -	REVISED - R. SHAH 09-09-94
	PLOT SCALE = 50.000' / IN.	CHECKED -	REVISED - R. SHAH 10-25-94
	PLOT DATE = 1/4/2008	DATE - 07-25-90	REVISED - R. SHAH 06-12-96

**STATE OF ILLINOIS
 DEPARTMENT OF TRANSPORTATION**

DETAIL OF STORM SEWER CONNECTION TO EXISTING SEWER			
SCALE: NONE	SHEET NO. 1 OF 1 SHEETS	STA.	TO STA.

F.A. RTE.	SECTION	COUNTY	TOTAL SHEETS	SHEET NO.
342	531-1-T	COOK	24	16
BD500-01 (BD-7)			CONTRACT NO.	62A27
FED. ROAD DIST. NO. 1 ILLINOIS FED. AID PROJECT				

VARIABLE - TO MEET EXISTING DIMENSIONS AND FIELD CONDITIONS (SEE NOTE ②)

PROP. CONC. CURB OR CURB AND GUTTER REPLACEMENT IN ACCORDANCE WITH STATE STANDARD 606001. (SEE NOTE ②)

SAW CUT FULL DEPTH - INCLUDED IN THE COST OF SIDEWALK, DRIVEWAY OR MEDIAN SURFACE REMOVAL PAY ITEM.

SEE STATE STANDARD 606001
EXISTING OR PROPOSED HMA SURFACE (IF APPLICABLE)

18" (450) MAX.

1/4" (5) **

EXISTING SIDEWALK, DRIVEWAY, MEDIAN SURFACE, SOD OR GROUND.

PROPOSED SIDEWALK, DRIVEWAY PAVEMENT, MEDIAN SURFACE OR SODDING SALT TOLERANT WITH TOP SOIL, 4" (100) SOD RESTORATION (SEE NOTE ①).

EXISTING CONCRETE PAVEMENT, CONCRETE BASE COURSE OR FLEXIBLE PAVEMENT

3" (75) MIN.

SUITABLE BACKFILL MATERIAL (INCLUDED IN THE COST OF CURB OR CURB AND GUTTER REMOVAL AND REPLACEMENT)

PROPOSED 3/4" (20) PREFORMED EXPANSION JOINT AT CONCRETE SIDEWALKS, DRIVEWAYS, AND MEDIANS. (INCLUDED IN THE COST OF CURB OR CURB AND GUTTER REMOVAL AND REPLACEMENT.)

* 3" (75) MINIMUM FROM TOP AND BOTTOM OF THE CONCRETE PAVEMENT OR BASE COURSE.

** IF THE FINAL SURFACE OF THE PAVEMENT IS CONCRETE, THE GUTTER IS TO BE FLUSH WITH THE PAVEMENT.

UNSUITABLE SUB-BASE MATERIAL TO BE REMOVED, IF DIRECTED BY THE ENGINEER, SHALL BE REPLACED WITH EITHER SUB-BASE GRANULAR MATERIAL, TYPE B OR ADDITIONAL THICKNESS OF CONCRETE.

REMOVAL AND REPLACEMENT 4" (100) OR LESS IS INCLUDED IN THE COST OF CURB OR CURB AND GUTTER REMOVAL AND REPLACEMENT.

REMOVAL AND REPLACEMENT IN EXCESS OF 4" (100) WILL BE PAID FOR IN ACCORDANCE WITH ARTICLE 109.04 OF THE STANDARD SPECIFICATIONS.

NOTE: ① SIDEWALK, DRIVEWAY PAVEMENT OR MEDIAN SURFACE SHALL BE SIMILAR TO THE MATERIAL BEING REMOVED AND WILL BE PAID FOR SEPARATELY.

SODDING, SALT TOLERANT AND TOP SOIL, FURNISH AND PLACE 4" WILL BE PAID FOR SEPARATELY,

② FERTILIZER FOR THE PLACEMENT OF THE SOD IS NOT REQUIRED

③ CURB OR CURB AND GUTTER REPLACEMENT SHALL MATCH THE SHAPE OF THE EXISTING CURB OR CURB AND GUTTER UNLESS OTHERWISE SPECIFIED.

④ FOR CURB OR CURB AND GUTTER REMOVAL AND REPLACEMENT ADJACENT TO FLEXIBLE PAVEMENT DELETE EPOXY COATED TIE BARS.

⑤ LONGITUDINAL BARS, IF ENCOUNTERED IN THE EXISTING CURB OR CURB AND GUTTER, ARE NOT TO BE REPLACED. CUTTING AND REMOVING LONGITUDINAL BARS SHALL BE INCLUDED IN THE COST OF CURB OR CURB AND GUTTER REMOVAL AND REPLACEMENT.

⑥ THE COST OF HMA SURFACE REMOVAL IN THE EXISTING GUTTER FLAG SHALL BE INCLUDED IN THE COST OF THE CURB AND GUTTER REMOVAL AND REPLACEMENT.

⑦ THE REMOVAL AND REPLACEMENT OF THE EXISTING CURB OR CURB AND GUTTER SHALL BE DONE IN ACCORDANCE WITH THE APPLICABLE PORTIONS OF SECTION 440 AND 606 OF THE STANDARD SPECIFICATIONS.

⑧ THE LOCATIONS OF REMOVAL AND REPLACEMENT OF EXISTING CURB OR CURB AND GUTTER SHALL BE DETERMINED BY THE RESIDENT ENGINEER AT THE TIME OF CONSTRUCTION.

PROPOSED #6 (20) EPOXY COATED TIE BARS 24" (600) LONG AT 24" (600) CENTERS WILL NOT BE PAID FOR SEPARATELY. DELETE EPOXY COATED TIE BARS IF EXISTING TIE BARS ARE USABLE AS DETERMINED BY THE ENGINEER. (SEE NOTE ③).

BASIS OF PAYMENT:

THIS WORK WILL BE PAID FOR AT THE CONTRACT UNIT PRICE PER FOOT (METER) FOR "CURB REMOVAL AND REPLACEMENT" OR "COMBINATION CONCRETE CURB AND GUTTER REMOVAL AND REPLACEMENT".

CURB OR CURB AND GUTTER REMOVAL AND REPLACEMENT

ALL DIMENSIONS ARE IN INCHES (MILLIMETERS) UNLESS OTHERWISE SHOWN.

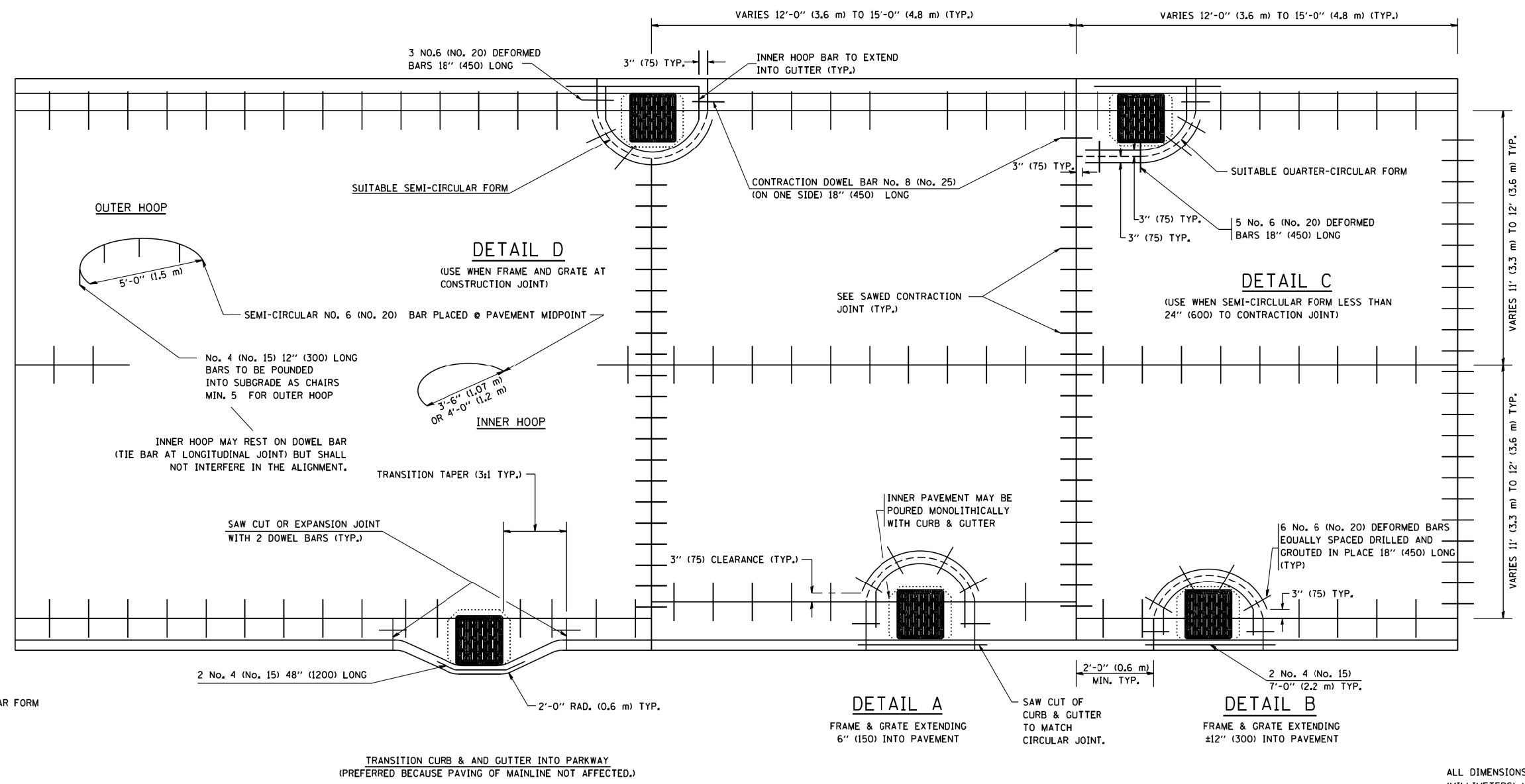
COMPANY NAME: #COMPANY NAMES
PROJECT CONTACT: #PROJECT CONTACTS
DATE PLOTTED: 9/29/2015 9:50:24 AM
FILE NAME: 86100196-52-sh1-ds1-bd24.dgn
PLOT DRIVER: ILpdf.plt
PLOT TABLE: PLOT LABEL.tbl

FILE NAME =	USER NAME = drivakosgn	DESIGNED - A. HOUSEH	REVISED - R. SHAH 10-03-96	STATE OF ILLINOIS DEPARTMENT OF TRANSPORTATION	CURB OR CURB AND GUTTER REMOVAL AND REPLACEMENT			F.A. RTE.	SECTION	COUNTY	TOTAL SHEETS	SHEET NO.
ci:\pwork\pwi\dot\drivakosgn\d0108315\bc24.dgn		DRAWN -	REVISED - A. ABBAS 03-21-97					342	531-1-T	COOK	24	17
PLOT SCALE = 50.000' / IN.		CHECKED -	REVISED - M. GOMEZ 01-22-01		BD600-06 (BD-24)			CONTRACT NO. 62A27				
PLOT DATE = 12/15/2009		DATE - 03-11-94	REVISED - R. BORO 12-15-09		SCALE: NONE	SHEET NO. 1 OF 1 SHEETS	STA.	TO STA.		FED. ROAD DIST. NO. 1 ILLINOIS FED. AID PROJECT		

FRAME EXTENSION INTO PAVEMENT	INNER HOOP REINFORCEMENT DIAMETER	SEMI CIRCULAR FORM DIAMETER	OUTER HOOP REINFORCEMENT DIAMETER
UP TO 8" (200)	3'-6" (1.1 m)	4'-0" (1.2 m)	5'-0" (1.5 m)
> 8" (200) TO 14" (360)	4'-0" (1.2 m)	4'-6" (1.4 m)	5'-0" (1.5 m)

DESIGNER NOTE:
THIS DETAIL IS TO BE USED WHEN THE GUTTER FLAG IS LESS THAN 24"

- NOTES :**
1. THE ROUNDOUT AND ADDED REINFORCEMENT WILL NOT BE PAID SEPARATELY, BUT SHALL BE INCLUDED IN THE CONTRACT UNIT PRICE FOR THE PAVEMENT.
 2. TRANSVERSE JOINTS MAY BE MOVED TO ACCOMMODATE ROUNDOUT. EDGE OF CIRCULAR JOINT SHALL BE MINIMUM 12" (300) FROM TRANSVERSE JOINT. RELOCATED TRANSVERSE JOINT SHALL BE CONTINUOUS FROM EDGE OF PAVEMENT TO EDGE OF PAVEMENT.
 3. SEMI-CIRCULAR FORM SHALL BE REMOVED PRIOR TO DRILL AND GROUT OF TIE BARS.
 4. ALL REINFORCED BARS SHALL BE EPOXY COATED.
 5. DRILL AND GROUT IS PREFERRED, HOWEVER TIE BARS CAN BE POURED IN PLACE IF CLEARANCE IS PROVIDED TO OUTER EDGE OF FRAME. MINIMUM 2" (50) CLEARANCE.
 6. WOOD SHIMS SHALL BE USED TO ADJUST ALL FRAMES. AFTER ADJUSTING MORTAR HAS CURED, THE WOOD SHIMS SHALL BE REMOVED AND THE VOIDS UNDER THE FRAMES FILLED WITH NON SHRINK GROUT.
 7. HOOP REINFORCEMENT SHALL BE ONE PIECE CONSTRUCTION.
 8. CIRCULAR FRAMES AND GRATES MAY BE SUBSTITUTED.
 9. CURB DOWELS MUST BE PLACED LEVEL & TRUE TO ALLOW CONTRACTION MOVEMENT.



LEGEND:
 CASTING
 - - - - - SUITABLE SEMI-CIRCULAR FORM

ALL DIMENSIONS ARE IN INCHES (MILLIMETERS) UNLESS OTHERWISE NOTED

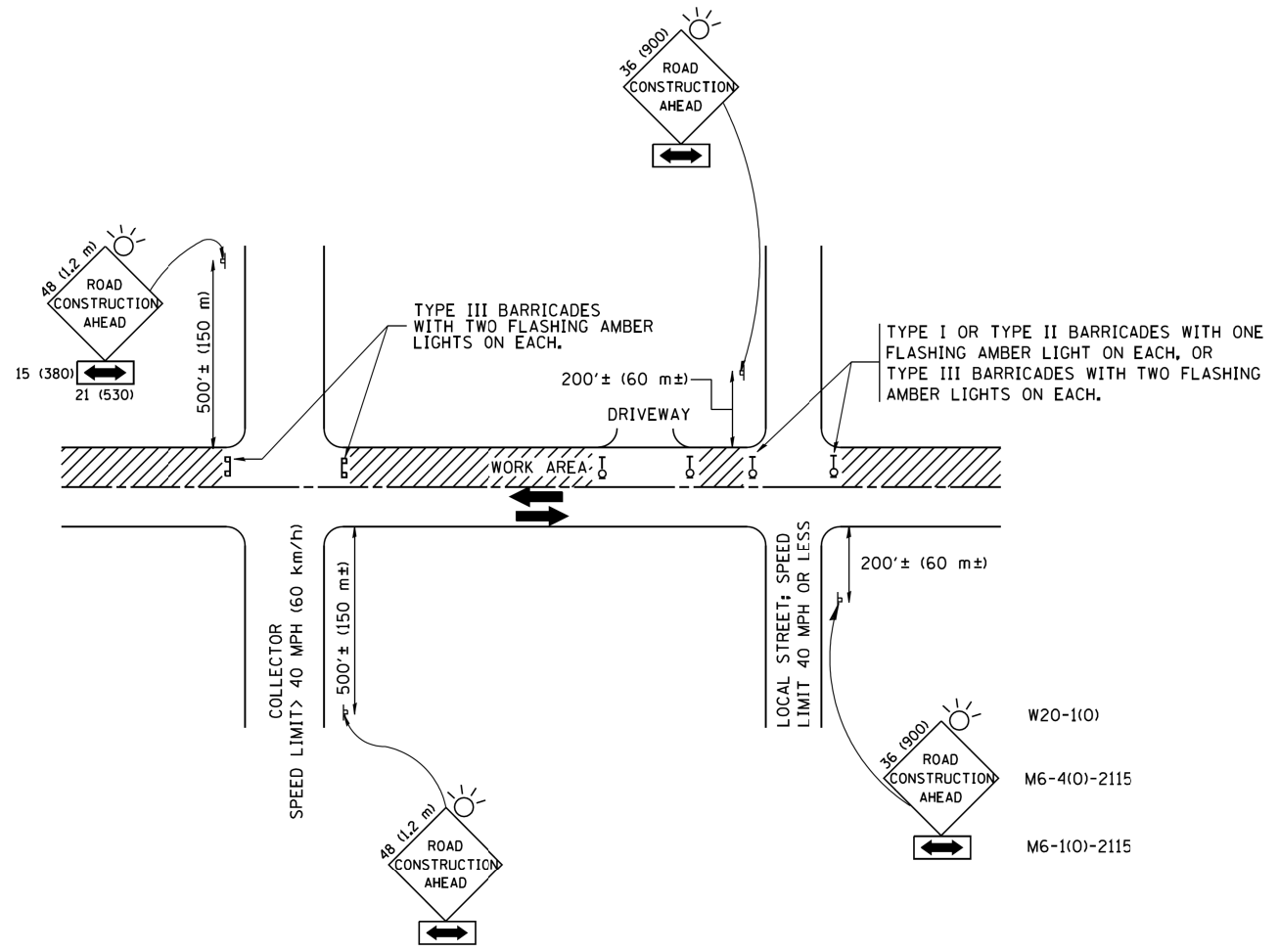
COMPANY NAME: #COMPANY NAME#
 PROJECT CONTACT: #PROJECT CONTACT#
 DATE PLOTTED: 9/29/2015 9:57:46 AM
 FILE NAME: 86100196-52-sh1-dst-bd48.dgn
 PLOT DRIVER: IL_Pdf.dwg
 PLOT TABLE: PLOT LABEL.tbl

FILE NAME = W:\dststd\2x34\bd48.dgn	USER NAME = geglano	DESIGNED - A. ABBAS	REVISED - T. MATOUSEK 08-28-00
		DRAWN - TOM MATOUSEK	REVISED - T. MATOUSEK 10-02-00
		CHECKED - A. ABBAS	REVISED - T. MATOUSEK 04-25-02
		DATE - 01-04-99	REVISED - P. LAFLEUR 08-27-02

**STATE OF ILLINOIS
DEPARTMENT OF TRANSPORTATION**

PCC PAVEMENT ROUNDOUTS AT CURB AND GUTTER	
SCALE: NONE	SHEET NO. 1 OF 1 SHEETS
STA.	TO STA.

F.A. RTE. 342	SECTION 531-1-T	COUNTY COOK	TOTAL SHEETS 24	SHEET NO. 18
BD-48			CONTRACT NO.	62A27
FED. ROAD DIST. NO. 1 ILLINOIS FED. AID PROJECT				



TRAFFIC CONTROL AND PROTECTION FOR SIDE ROADS, INTERSECTIONS, AND DRIVEWAYS

NOTES:

- A. FOR NO LANE RESTRICTION ON THE SIDE ROAD OR DRIVEWAYS
 1. SIDE ROAD WITH A SPEED LIMIT OF 40 MPH (60 km/h) OR LESS AS SHOWN ON THE DRAWING AND AS DIRECTED BY THE ENGINEER:
 - a) ONE ROAD CONSTRUCTION AHEAD SIGN 36 x 36 (900x900) WITH A FLASHER AND FLAG MOUNTED ON IT APPROXIMATELY 200' (60 m) IN ADVANCE OF THE MAIN ROUTE.
 - b) THE CLOSED PORTION OF THE MAIN ROUTE SHALL BE PROTECTED BY BLOCKING WITH TYPE I, TYPE II OR TYPE III BARRICADES, 1/3 OF THE CROSS SECTION OF THE CLOSED PORTION.
 2. SIDE ROAD WITH A SPEED LIMIT GREATER THAN 40 MPH (60 km/h) AS SHOWN ON THE DRAWING AND AS DIRECTED BY THE ENGINEER:
 - a) ONE ROAD CONSTRUCTION AHEAD SIGN 48 x 48 (1.2 m x 1.2 m) WITH A FLASHER MOUNTED ON IT APPROXIMATELY 500' (150 m) IN ADVANCE OF THE MAIN ROUTE.
 - b) THE CLOSED PORTION OF THE MAIN ROUTE SHALL BE PROTECTED BY BLOCKING WITH TYPE III BARRICADES, 1/2 OF THE CROSS SECTION OF THE CLOSED PORTION.
 3. WHEN THE SIDE ROAD LIES BETWEEN THE BEGINNING OF THE MAINLINE SIGNING AND THE WORK ZONE, A SINGLE HEADED ARROW (M6-1) SHALL BE USED IN LIEU OF THE DOUBLE HEADED ARROW (M6-4).
- B. FOR A LANE CLOSURE ON A SIDE ROAD OR DRIVEWAY:

USE APPLICABLE PORTIONS OF THE TYPICAL APPLICATION OF TRAFFIC CONTROL DEVICES (STD. 701501, STD. 701606 OR THE APPROPRIATE STANDARD). THE SPACING OF SIGNS AND BARRICADES SHALL BE ADJUSTED FOR FIELD CONDITIONS AS DIRECTED BY THE ENGINEER. THE DIRECTIONAL ARROW SHALL BE COVERED OR REMOVED WHEN NO LONGER CONSISTENT WITH THE SIDE ROAD LANE CLOSURE.
- C. ADVANCE WARNING SIGNS ARE TO BE OMITTED ON DRIVEWAY UNLESS OTHERWISE NOTED.
- D. THE TRAFFIC CONTROL AND PROTECTION FOR SIDE ROADS, INTERSECTIONS, AND DRIVEWAYS SHALL BE INCIDENTAL TO THE COST OF SPECIFIED TRAFFIC CONTROL STANDARDS OR ITEMS.

All dimensions are in millimeters (inches) unless otherwise shown.

COMPANY NAME: #COMPANY NAME#
 PROJECT CONTACT: #PROJECT CONTACT#
 DATE PLOTTED: 9/29/2015 10:09:50 AM
 FILE NAME: 86100196-52-sh1-dst-tc10.dgn
 PLOT DRIVER: ILpdf.dwt
 PEN TABLE: PLOT LABEL.tbl

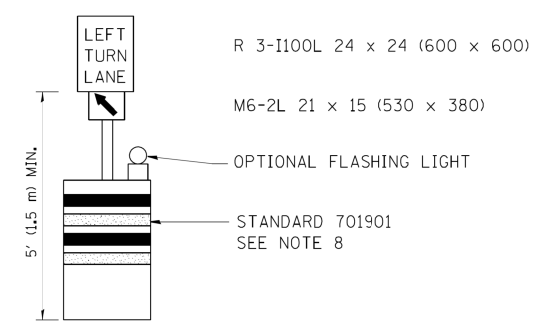
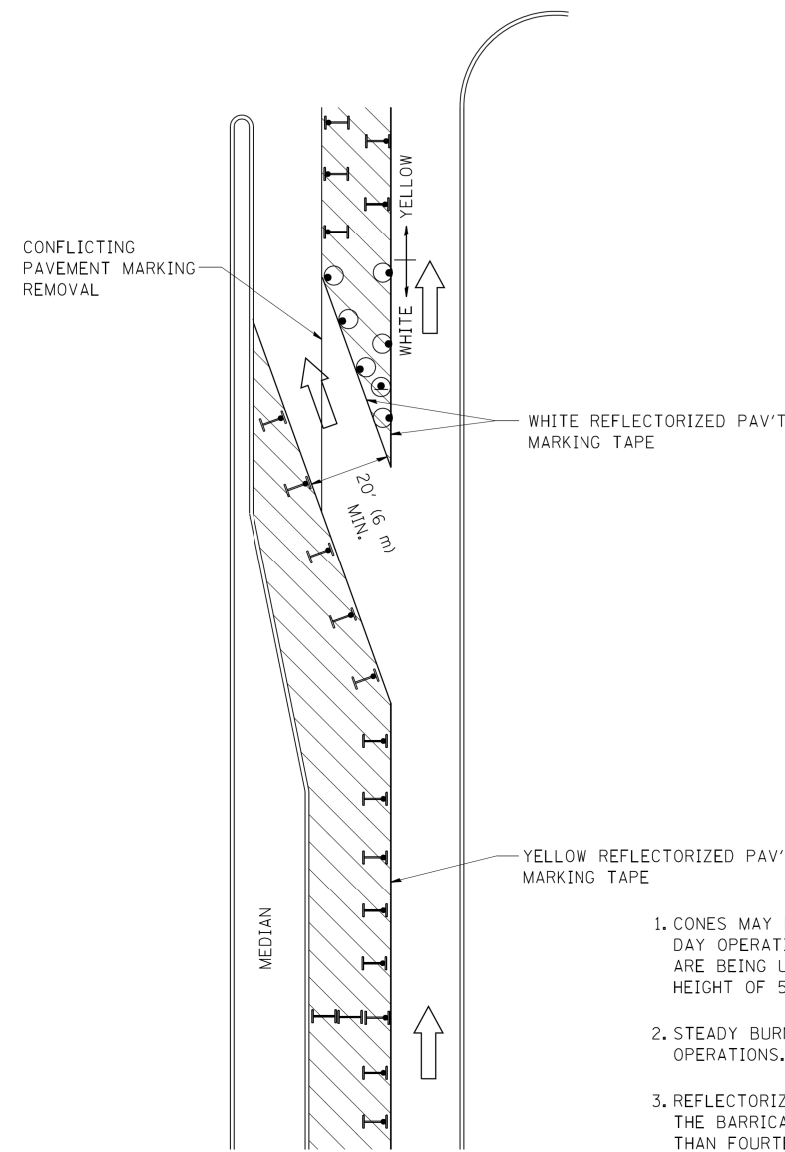
FILE NAME =	USER NAME = geglano	DESIGNED - LHA	REVISED - J. OBERLE 10-18-95
W:\diststd\22x34\tc10.dgn		DRAWN -	REVISED - A. HOUSEH 03-06-96
	PLOT SCALE = 50.000' / IN.	CHECKED -	REVISED - A. HOUSEH 10-15-96
	PLOT DATE = 1/4/2008	DATE - 06-89	REVISED - T. RAMMACHER 01-06-00

STATE OF ILLINOIS
 DEPARTMENT OF TRANSPORTATION

TRAFFIC CONTROL AND PROTECTION FOR SIDE ROADS, INTERSECTIONS, AND DRIVEWAYS			
SCALE: NONE	SHEET NO. 1 OF 1 SHEETS	STA.	TO STA.

F.A. RTE.	SECTION	COUNTY	TOTAL SHEETS	SHEET NO.
342	531-1-T	COOK	24	19
TC-10			CONTRACT NO.	62A27
FED. ROAD DIST. NO. 1 ILLINOIS FED. AID PROJECT				

COMPANY NAME: #COMPANY NAME#
 PROJECT CONTACT: #PROJECT CONTACT#
 DATE PLOTTED: 9/29/2015 10:16:38 AM
 FILE NAME: 86100196-52-sh1-dst-tc14.dgn
 PLOT DRIVER: ILpdf.dwt
 PLOT TABLE: PLOT LABEL.tbl



GENERAL NOTES

- CONES MAY BE SUBSTITUTED FOR BARRICADES OR DRUMS AT HALF THE SPACING DURING DAY OPERATIONS. CONES SHALL BE A MINIMUM OF 28 (710) IN HEIGHT. WHEN CONES ARE BEING USED, THE "LEFT TURN LANE" SIGN MAY BE SKID MOUNTED AT A MINIMUM HEIGHT OF 5' (1.5 m).
- STEADY BURNING LIGHTS WILL NOT BE REQUIRED ON BARRICADES OR DRUMS FOR DAY OPERATIONS. ALL LIGHTS SHALL BE MONODIRECTIONAL.
- REFLECTORIZED TEMPORARY PAVEMENT MARKING TAPE SHALL BE PLACED THROUGHOUT THE BARRICADED AREA OF EACH TURN BAY WHERE THE CLOSURE TIME IS GREATER THAN FOURTEEN DAYS.
- THIS APPLICATION ALSO APPLIES WHEN WORK IS BEING PERFORMED IN THE RIGHT LANE(S) AND THE RIGHT TURN BAY IS TO REMAIN OPEN. UNDER THIS CONDITION, "RIGHT TURN LANE" R3-100 24 x 24 (600 x 600) AND M6-2R 21 x 15 (530 x 380) SHALL BE USED.
- THESE CONTROLS SHALL SUPPLEMENT MAINLINE TRAFFIC CONTROL FOR LANE CLOSURES.
- LONGITUDINAL DIMENSIONS MAY BE ADJUSTED TO FIT FIELD CONDITIONS.
- FORM OPER 725 IS REQUIRED.
- IF A DRUM OR TYPE II BARRICADE WITH AN ATTACHED SIGN PANEL WHICH MEETS NCHRP 350 REQUIREMENTS IS NOT AVAILABLE, THE SIGNS SHALL BE MOUNTED, ABOVE THE BARRICADES, ON SEPARATE SIGNS SUPPORTS THAT MEET NCHRP 350 PREQUIREMENTS.
- TRAFFIC CONTROL AND PROTECTION AT TURN BAYS (TO REMAIN OPEN TO TRAFFIC) SHALL BE INCLUDED IN THE COST SPECIFIED TRAFFIC CONTROL STANDARDS OR ITEMS.

All dimensions are in inches (millimeters) unless otherwise shown.

LEGEND

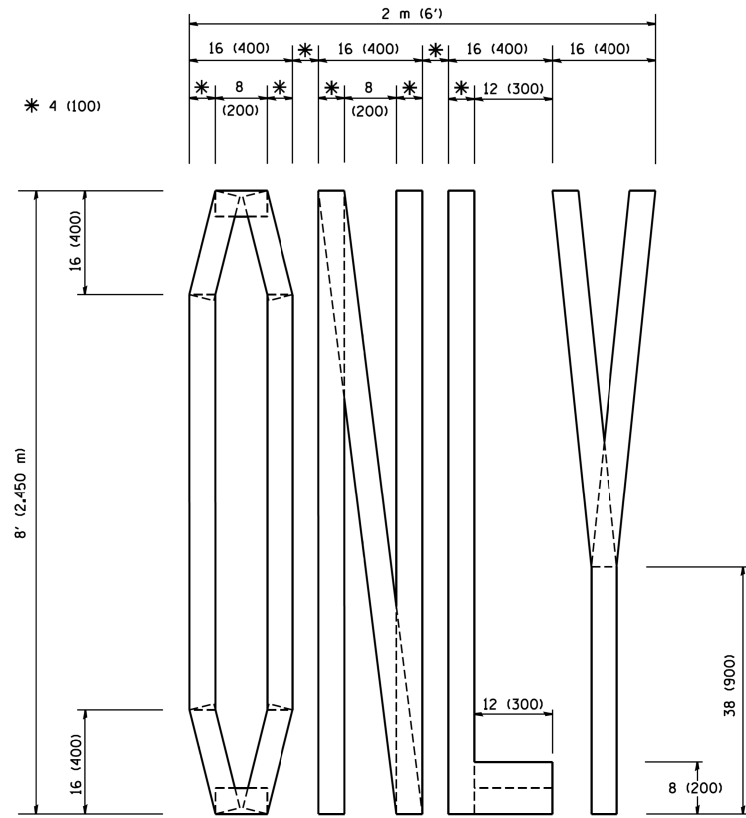
- WORK AREA
- LANE OPEN TO TRAFFIC
- TYPE I OR II BARRICADE WITH STEADY BURN LIGHT
- DRUM WITH STEADY BURN LIGHT
- DRUM WITH SIGN (WITH OPTIONAL FLASHING LIGHT) SEE DETAIL
- TYPE I OR II CHECK BARRICADE WITH FLASHING LIGHT

FILE NAME =	USER NAME = drivakosgn	REVISED -T. RAMMACHER 09-08-94	REVISED - R. BORO 09-14-09
ci:\pwork\PWID00\DRIVAKOSGN\d0108315\14.dgn		REVISED - A. HOUSEH 11-07-95	REVISED -
		REVISED - A. HOUSEH 10-12-96	REVISED -
		REVISED -T. RAMMACHER 01-06-00	REVISED -

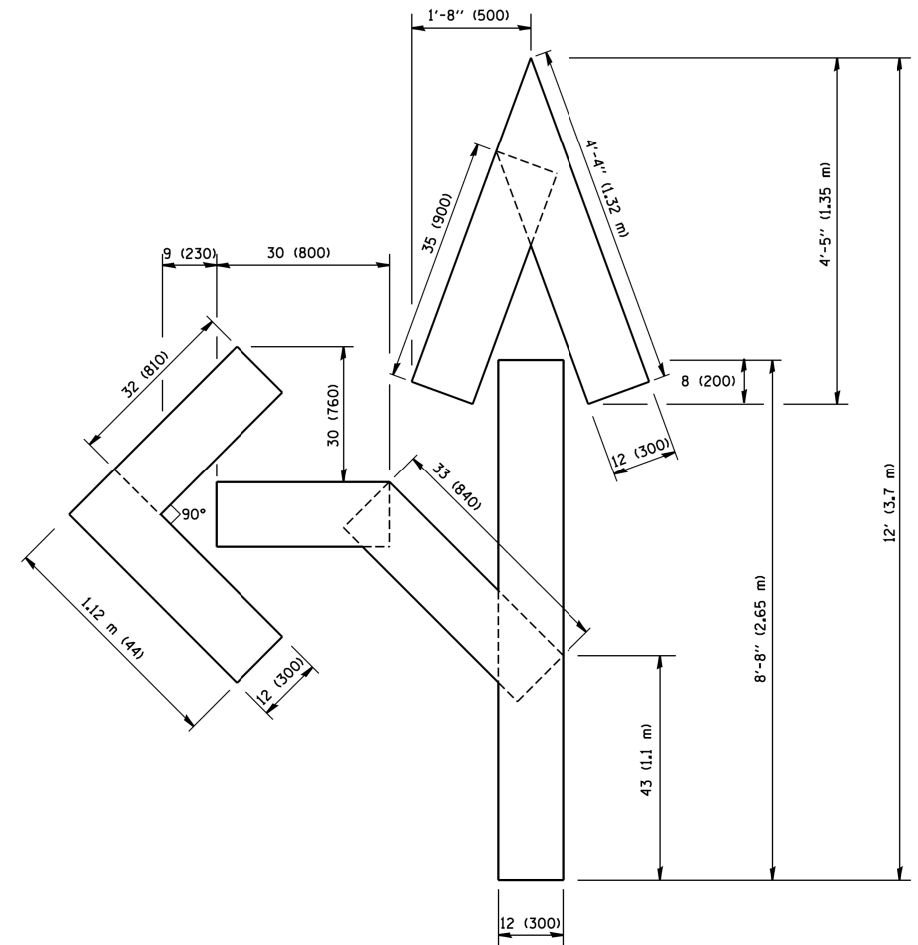
**STATE OF ILLINOIS
DEPARTMENT OF TRANSPORTATION**

TRAFFIC CONTROL AND PROTECTION AT TURN BAYS (TO REMAIN OPEN TO TRAFFIC)			
SCALE: NONE	SHEET NO. 1 OF 1 SHEETS	STA.	TO STA.

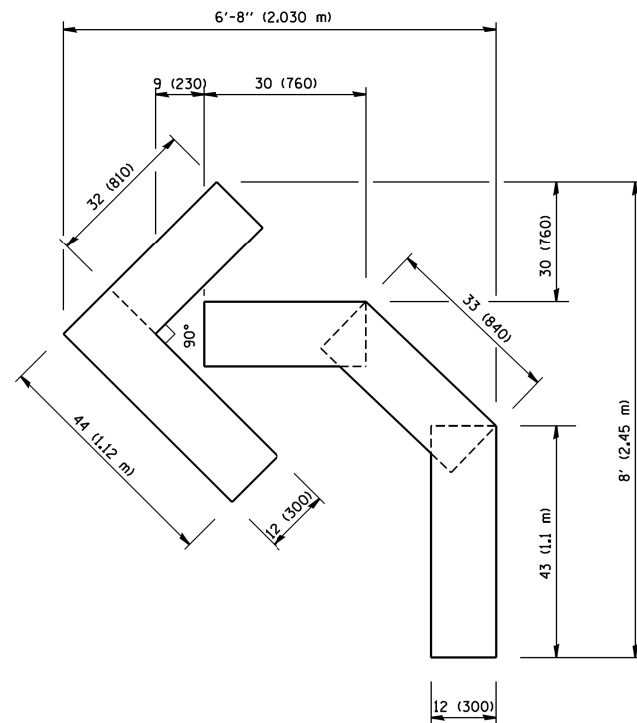
F.A. RTE.	SECTION	COUNTY	TOTAL SHEETS	SHEET NO.
342	531-1-T	COOK	24	20
TC-14		CONTRACT NO.	62A27	
FED. ROAD DIST. NO. 1 ILLINOIS FED. AID PROJECT				



QUANTITY
 4 (100) LINE = 64.1 ft. (19.7 m)
 21.1 sq. ft. (1.97 sq. m)



QUANTITY
 4 (100) LINE = 82.5 ft. (25.3 m)
 27.5 sq. ft. (2.53 sq. m)



QUANTITY
 4 (100) LINE = 45.5 ft. (13.9 m)
 15.2 sq. ft. (1.39 sq. m)

All dimensions are in inches (millimeters) unless otherwise shown.

COMPANY NAME: #COMPANY NAMES
 PROJECT CONTACT: #PROJECT CONTACTS
 DATE PLOTTED: 9/29/2015 10:23:01 AM
 FILE NAME: 86100196-52-sh1-dst-tc16.dgn
 PLOT DRIVER: ILpdf.dwt
 PLOT TABLE: PLOT LABEL.tbl

FILE NAME =	USER NAME = geglano	DESIGNED -	REVISED -T. RAMMACHER 06-05-96
W:\diststd\22x34\tc16.dgn		DRAWN -	REVISED -T. RAMMACHER 11-04-97
		CHECKED -	REVISED -T. RAMMACHER 03-02-98
		DATE - 09-18-94	REVISED -E. GOMEZ 08-28-00

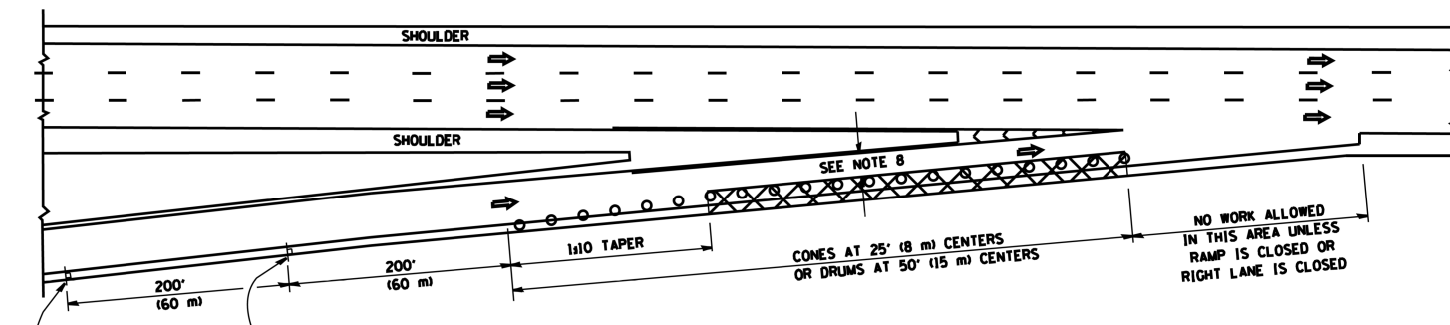
STATE OF ILLINOIS
 DEPARTMENT OF TRANSPORTATION

PAVEMENT MARKING LETTERS AND SYMBOLS
 FOR TRAFFIC STAGING

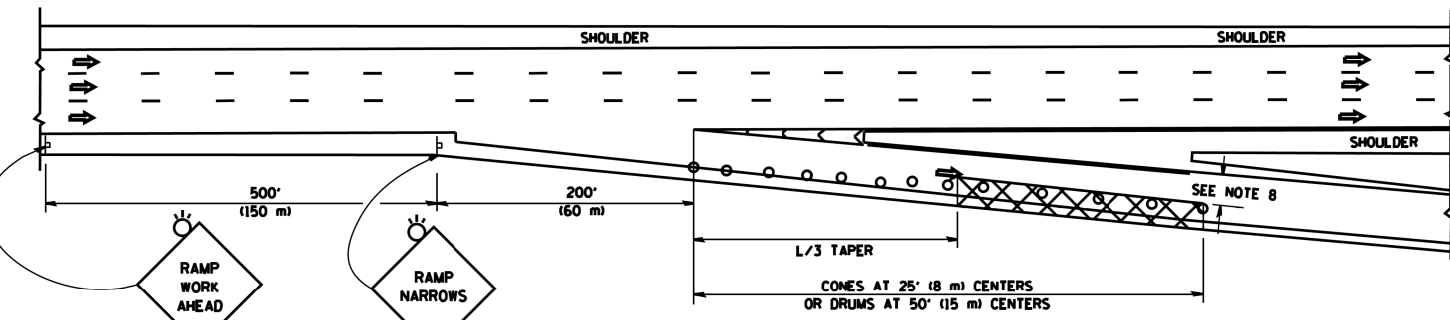
SCALE: NONE SHEET NO. 1 OF 1 SHEETS STA. TO STA.

F.A. RTE.	SECTION	COUNTY	TOTAL SHEETS	SHEET NO.
342	531-1-T	COOK	24	21
TC-16		CONTRACT NO.	62A27	
FED. ROAD DIST. NO. 1 ILLINOIS FED. AID PROJECT				

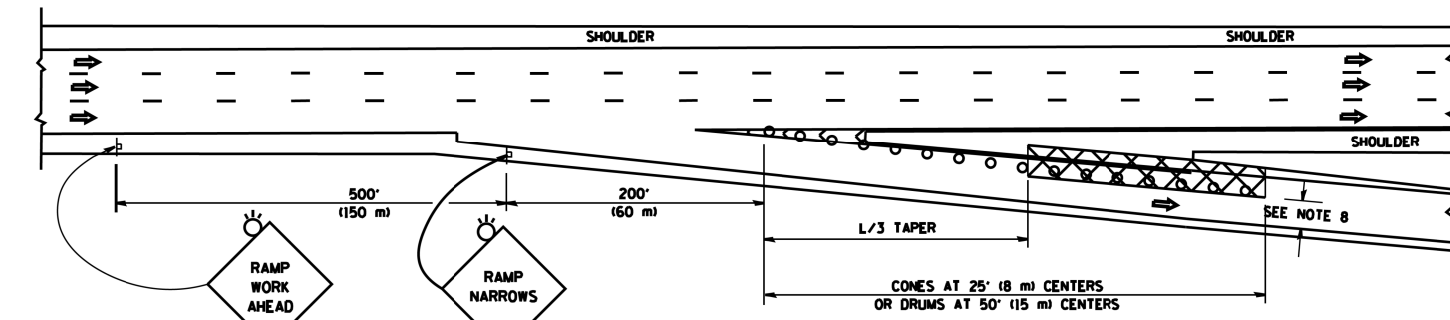
PARTIAL RAMP CLOSURE DETAILS



TYPICAL ENTRANCE RAMP



TYPICAL EXIT RAMP



TYPICAL EXIT RAMP

SYMBOLS

- ACTIVE WORK AREA
- SIGN ON PORTABLE OR PERMANENT SUPPORT
- FLAGGER WITH CONTROL SIGN
- TYPE II BARRICADE OR DRUM WITH STEADY BURN MONO-DIRECTIONAL LIGHT
- CONE, DRUM OR BARRICADE
- IMPACT ATTENUATOR OF TYPE AND TEST LEVEL SPECIFIED

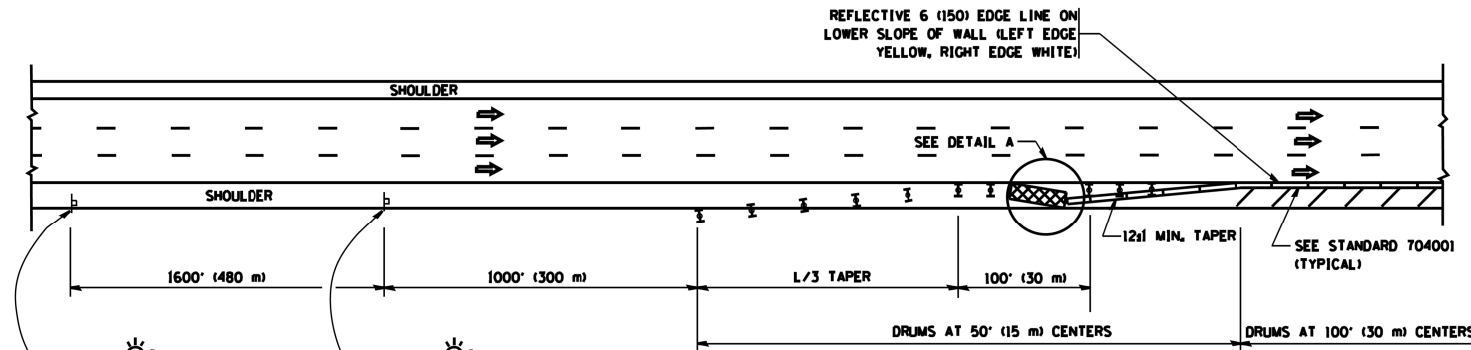
GENERAL NOTES

1. THE "L" DISTANCE EQUALS:

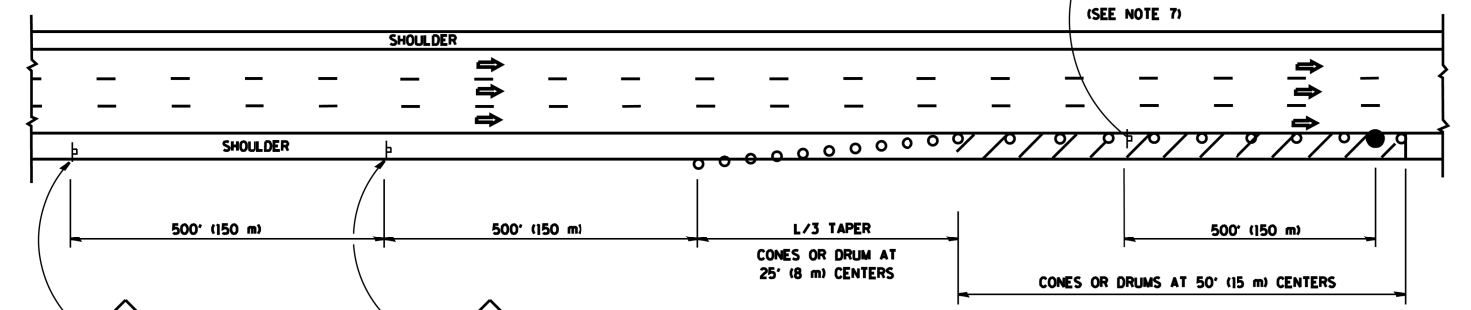
SPEED LIMIT	FORMULAS
45 mph (80 km/h) OR GREATER:	METRIC ENGLISH
	$L = 0.65(WNS)$ $L = (WNS)$

W = WIDTH OF OFFSET IN FEET (METERS)
S = NORMAL POSTED SPEED MPH (KM/H)
2. PLASTIC DRUMS WITH HIGH PERFORMANCE REFLECTIVE SHEETING AND STEADY BURNING LIGHTS ARE REQUIRED FOR ALL NIGHTIME CLOSURES.
3. ALL SIGNS SHALL BE POST MOUNTED IF THE CLOSURE TIME EXCEEDS FOUR DAYS.
4. FLASHING LIGHTS SHALL BE USED DURING THE HOURS OF DARKNESS AND SHALL BE INSTALLED ABOVE THE FIRST TWO SETS OF SIGNS.

SHOULDER CLOSURE DETAILS

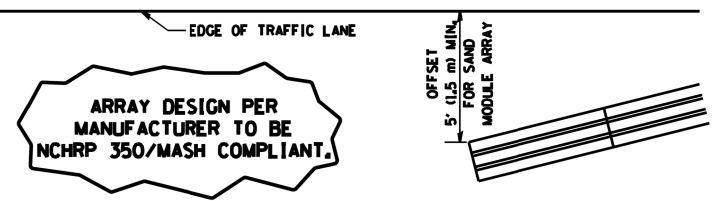


PERMANENT SHOULDER CLOSURE



DAYTIME SHOULDER CLOSURE

THIS DETAIL IS USED WHERE:
1. VEHICLES, EQUIPMENT, WORKERS OR THEIR ACTIVITIES ENCR OACH IN AN AREA CLOSER THAN 15' (4.5 m) TO THE EDGE OF PAVEMENT FOR A PERIOD IN EXCESS OF 15 MINUTES.



**DETAIL "A"
IMPACT ATTENUATOR, TEMPORARY
(SEE NOTE 5)**

5. THE IMPACT ATTENUATOR, TEMPORARY IS NOT REQUIRED WHEN THE TEMPORARY CONCRETE BARRIER WALL IS PROTECTED BY OR IS TIED INTO THE EXISTING GUARDRAIL. IF OFFSET IS LESS THAN 5 FEET USE NARROW USE TYPE DEVICE TO MEET NCHRP350/MASH.
6. AUTHORIZATION FROM THE DISTRICT'S BUREAU OF TRAFFIC IS REQUIRED FOR ALL FREEWAY CLOSURES.
7. THE FLAGGER AND FLAGGER SIGN ARE REQUIRED AT THE ABOVE WORK SITES WHEN:
 - a. FOUR OR MORE WORK VEHICLES ENTER THE TRAFFIC LANES IN A ONE HOUR PERIOD.
 - b. THE WORK ACTIVITY REQUIRES FREQUENT ENCR OACHMENT INTO THE LANE OPEN TO TRAFFIC.
 THE FLAGGER SHALL BE STATIONED APPROXIMATELY 100' (30 m) TO 200' (60 m) IN ADVANCE OF THE WORKERS.
8. 12' MIN. WIDTH TANGENT SECTION
16' MIN. WIDTH CURVE SECTION.

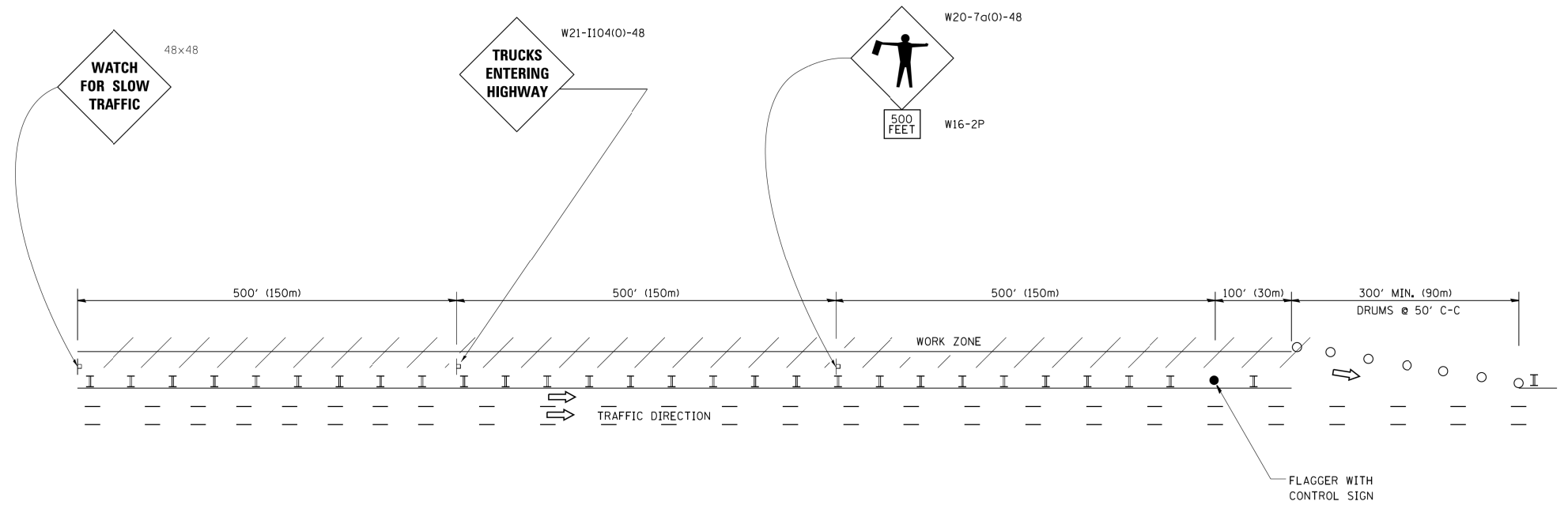
ALL DIMENSIONS ARE IN INCHES (MILLIMETERS) UNLESS OTHERWISE SHOWN.

COMPANY NAME: #COMPANY NAME#
 PROJECT CONTACT: #PROJECT CONTACT#
 DATE PLOTTED: 9/29/2015 10:27:40 AM
 FILE NAME: #6100196-52-shr-dst-tcl7.dgn
 PLOT DRIVER: #ILoadf.dwgshrfq
 PLOT TABLE: #PLOT LABEL.tbl#

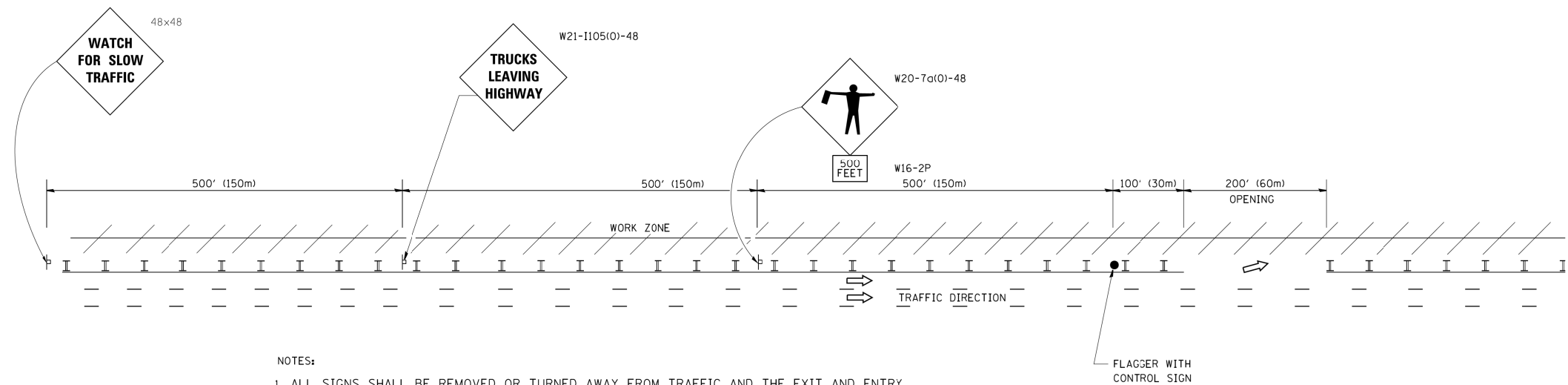
FILE NAME = c:\pwwork\pwwork\1\eyse\d0108315\tcl7.dgn	USER NAME = leysa	DESIGNED -	REVISED - J.A.F. 12-06	STATE OF ILLINOIS DEPARTMENT OF TRANSPORTATION	TRAFFIC CONTROL DETAILS FOR FREEWAY SHOULDER CLOSURES AND PARTIAL RAMP CLOSURES		F.A. RTE. = 342	SECTION = 531-1-T	COUNTY = COOK	TOTAL SHEETS = 24	SHEET NO. = 22
PLOT SCALE = 100.0000' / 1in.	CHECKED - D.W.S.	REVISD - S.P.B. 01-07	REVISD - S.P.B. 12-09		SCALE: NONE	SHEET NO. 1 OF 1 SHEETS	STA. TO STA.	TC-17		CONTRACT NO. 62A27	
PLOT DATE = 4/17/2014	DATE = 11-96	REVISD - M.D. 06-13					FED. ROAD DIST. NO. 1 ILLINOIS FED. AID PROJECT				

SIGNING FOR FLAGGING OPERATIONS AT WORK ZONE OPENINGS

WORK ZONE EXIT OPENING



WORK ZONE ENTRY OPENING



NOTES:

1. ALL SIGNS SHALL BE REMOVED OR TURNED AWAY FROM TRAFFIC AND THE EXIT AND ENTRY OPENINGS SHALL BE CLOSED WHEN THE FLAGGING OPERATION CEASES. NON OPERATING EQUIPMENT SHALL COMPLY WITH ARTICLE 701.11
2. WORK ZONE OPENINGS SHALL BE A MINIMUM OF ONE HALF MILE APART AND A MINIMUM OF ONE QUARTER MILE FROM ALL ENTRANCE AND EXIT RAMPS.
3. EXITING THE WORK ZONE AT ANY PLACE OTHER THAN AT A WORK ZONE EXIT OPENING WILL BE PROHIBITED.
4. ALL VEHICLES SHALL ENTER THE WORK ZONE AT ENTRY OPENINGS, USING THEIR TURN SIGNALS TO WARN MOTORISTS
5. FLAGGERS SHALL NOT STOP TRAFFIC OR DIRECT TRAFFIC INTO AN ADJACENT LANE.

ALL DIMENSIONS ARE IN INCHES (MILLIMETERS) UNLESS OTHERWISE SHOWN

COMPANY NAME: #COMPANY NAME#
 PROJECT CONTACT: #PROJECT CONTACT#
 DATE PLOTTED: 9/29/2015 10:37:46 AM
 FILE NAME: 86100196-52-sh1-ds1-tc18.dgn
 PLOT DRIVER: IL_dpf.dwt
 PEN TABLE: PLOT LABEL.tbl

FILE NAME =	USER NAME = footemj	DESIGNED -	REVISED - J.A.F. 02-06
PROJECT CONTACT =		DRAWN -	REVISED - S.P.B. 01-07
DATE PLOTTED =		CHECKED -	REVISED - S.P.B. 12-09
FILE NAME =		DATE -	REVISED - M.D. 06-13
PLOT DRIVER =			
PEN TABLE =			

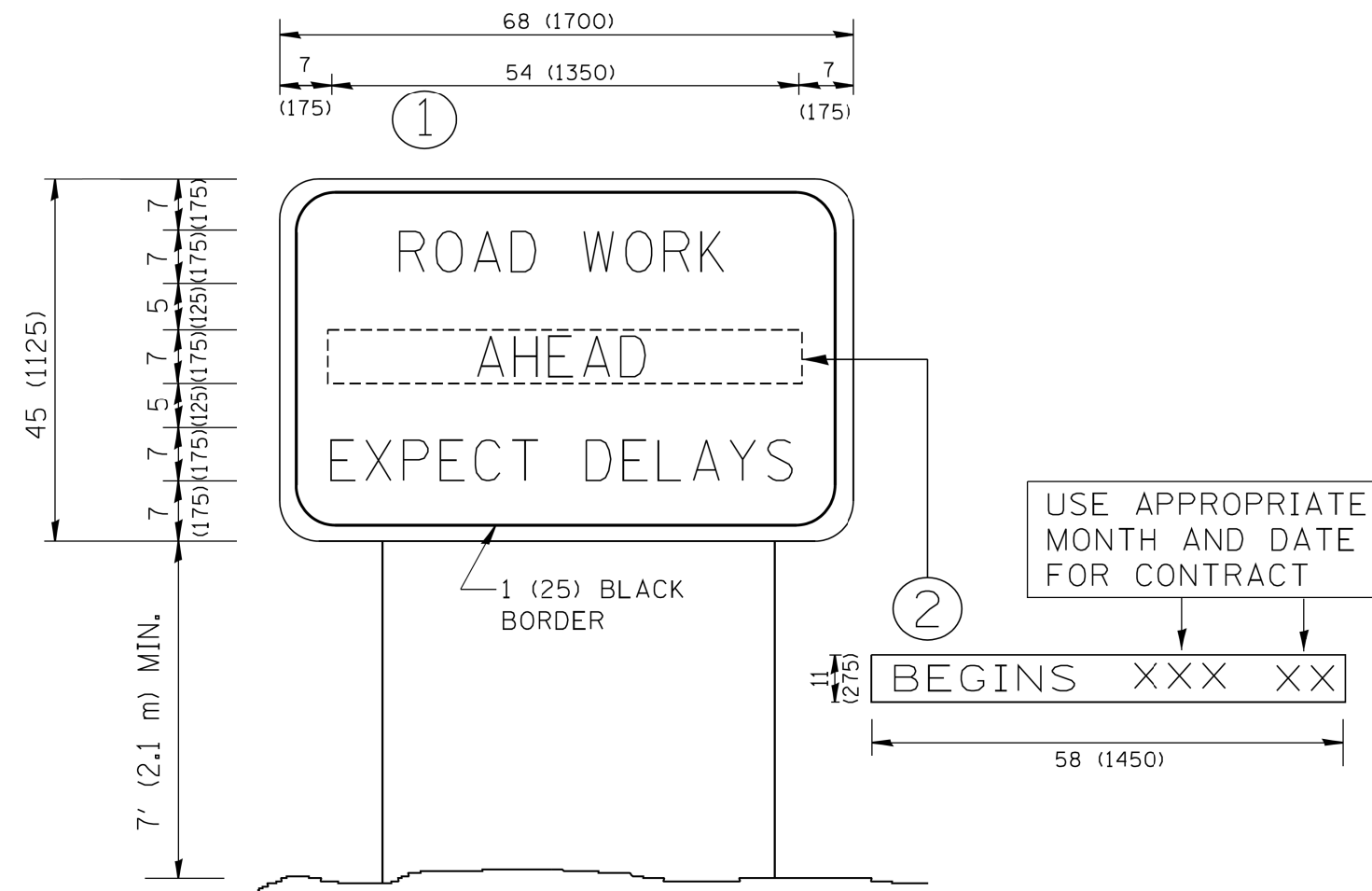
STATE OF ILLINOIS
 DEPARTMENT OF TRANSPORTATION

FREEWAY/EXPRESSWAY SIGNING FOR FLAGGING OPERATIONS
 AT WORK ZONE OPENINGS ON FREEWAYS/EXPRESSWAYS

SCALE: NONE SHEET NO. 1 OF 1 SHEETS STA. TO STA.

F.A. RTE.	SECTION	COUNTY	TOTAL SHEETS	SHEET NO.
342	531-1-T	COOK	24	23
TC-18			CONTRACT NO. 62A27	
FED. ROAD DIST. NO. 1 ILLINOIS FED. AID PROJECT				

COMPANY NAME: #COMPANY NAME#
 PROJECT CONTACT: #PROJECT CONTACT#
 DATE PLOTTED: 9/29/2015 10:43:48 AM
 FILE NAME: \\66100196-52-shr-dst-rc22.dgn
 PLOT DRIVER: ILpdf.plt
 PEN TABLE: PLOTLABEL.tbl



NOTES:

1. USE BLACK LETTERING ON ORANGE BACKGROUND.
2. ERECT SIGNS IN ADVANCE OF THE LOCATION FOR THE "ROAD CONSTRUCTION AHEAD" SIGN AT LOCATIONS AS DIRECTED BY THE ENGINEER.
3. ERECT SIGN ① WITH INSTALLED PANEL ② ONE WEEK PRIOR TO THE START OF CONSTRUCTION.
4. REMOVE PANEL ② SOON AFTER THE START OF CONSTRUCTION.
5. SEE SPECIAL PROVISION FOR "TEMPORARY INFORMATION SIGNING" FOR ADDITIONAL INFORMATION.
6. ONE SIGN ASSEMBLY EQUALS 25.70 SQ. FT. (2.3 SQ. M.)
7. SHALL BE PAID FOR AS TEMPORARY INFORMATION SIGNING.

ALL DIMENSIONS ARE IN INCHES (MILLIMETERS) UNLESS OTHERWISE SHOWN.

FILE NAME =	USER NAME = gegl1enobt	DESIGNED -	REVISED - R. MIRS 09-15-97
W:\diststd\22x34\rc22.dgn		DRAWN -	REVISED - R. MIRS 12-11-97
	PLOT SCALE = 50.000' / IN.	CHECKED -	REVISED - T. RAMMACHER 02-02-99
	PLOT DATE = 1/4/2008	DATE -	REVISED - C. JUCIUS 01-31-07

**STATE OF ILLINOIS
DEPARTMENT OF TRANSPORTATION**

ARTERIAL ROAD INFORMATION SIGN	
SCALE: NONE	SHEET NO. 1 OF 1 SHEETS
STA.	TO STA.

F.A. RTE.	SECTION	COUNTY	TOTAL SHEETS	SHEET NO.
342	531-1-T	COOK	24	24
TC-22		CONTRACT NO.	62A27	
FED. ROAD DIST. NO. 1 ILLINOIS FED. AID PROJECT				