

SUMMARY OF QUANTITIES

CODE NO.	ITEM	UNIT	TOTAL QUANTITY	CONSTRUCTION CODE		
				ROADWAY	SIGNAL	EVP
				100% HSR	100% HSR	100% ELWOOD
				0004	0021	0021
* 66900450	SPECIAL WASTE PLANS AND REPORTS	LSUM	1	1		
* 66900530	SOIL DISPOSAL ANALYSIS	EACH	1	1		
67100100	MOBILIZATION	LSUM	1	1		
70103815	TRAFFIC CONTROL SURVEILLANCE	CAL DA	70	70		
70106800	CHANGEABLE MESSAGE SIGN	CAL MO	16	16		
70300210	TEMPORARY PAVEMENT MARKING LETTERS AND SYMBOLS	SQ FT	145	145		
70300220	TEMPORARY PAVEMENT MARKING - LINE 4"	FOOT	10935	10935		
70300240	TEMPORARY PAVEMENT MARKING - LINE 6"	FOOT	441	441		
70300280	TEMPORARY PAVEMENT MARKING - LINE 24"	FOOT	279	279		
70400100	TEMPORARY CONCRETE BARRIER	FOOT	562	562		
70600260	IMPACT ATTENUATORS, TEMPORARY (FULLY REDIRECTIVE, NARROW), TEST LEVEL 3	EACH	1	1		
* 72000100	SIGN PANEL - TYPE 1	SQ FT	202	178	24	
* 72000200	SIGN PANEL - TYPE 2	SQ FT	10	10		
* 72400100	REMOVE SIGN PANEL ASSEMBLY - TYPE A	EACH	10	10		

* -SPECIALTY ITEM

⚠ REVISD 5-27-16

FILE NAME: c:\temp\maths\libera\transportation\mat12453\062832-411-500.dgn



USER NAME = mathw.libera	DESIGNED - MTL	REVISED -
PLOT SCALE = 40,0000' / in.	DRAWN - DAB	REVISED -
PLOT DATE = 3/21/2016	CHECKED - JCM	REVISED -
	DATE - 03/21/2016	REVISED -

STATE OF ILLINOIS
DEPARTMENT OF TRANSPORTATION

SUMMARY OF QUANTITIES

SCALE: SHEET 6 OF 11 SHEETS STA. N/A TO STA. N/A

F.A.P. RTE.	SECTION	COUNTY	TOTAL SHEETS	SHEET NO.
846	DIHSRR2016-01	WILL	146	9
CONTRACT NO. 62B32			ILLINOIS FED. AID PROJECT	

SUMMARY OF QUANTITIES

CODE NO.	ITEM	UNIT	TOTAL QUANTITY	CONSTRUCTION CODE		
				ROADWAY	SIGNAL	EVP
				100% HSR	100% HSR	100% ELWOOD
				0004	0021	0021
* 72800100	TELESCOPING STEEL SIGN SUPPORT	FOOT	246	246		
* 78000100	THERMOPLASTIC PAVEMENT MARKING - LETTERS AND SYMBOLS	SO FT	280	280		
* 78000200	THERMOPLASTIC PAVEMENT MARKING - LINE 4"	FOOT	3601	3601		
* 78000400	THERMOPLASTIC PAVEMENT MARKING - LINE 6"	FOOT	1565	1565		
* 78000500	THERMOPLASTIC PAVEMENT MARKING - LINE 8"	FOOT	197	197		
* 78000600	THERMOPLASTIC PAVEMENT MARKING - LINE 12"	FOOT	110	110		
* 78000650	THERMOPLASTIC PAVEMENT MARKING - LINE 24"	FOOT	197	197		
* 78100100	RAISED REFLECTIVE PAVEMENT MARKER	EACH	24	24		
* 78200011	BARRIER WALL REFLECTORS, TYPE C	EACH	46	46		
* 78200410	GUARDRAIL MARKERS, TYPE A	EACH	27	27		
* 78201000	TERMINAL MARKER - DIRECT APPLIED	EACH	2	2		
	78300100 PAVEMENT MARKING REMOVAL	SO FT	4471	4471		
* 80500020	SERVICE INSTALLATION - POLE MOUNTED	EACH	1		1	
* 81028200	UNDERGROUND CONDUIT, GALVANIZED STEEL, 2" DIA.	FOOT	2566		2566	

* =SPECIALTY ITEM

⚠ REVISD 5-27-16

FILE NAME: c:\pwork\proj\matthew.libera\transportation\data\2465\01E2812-41-500.dgn



USER NAME = matthew.libera	DESIGNED - MTL	REVISED -
	DRAWN - DAB	REVISED -
PLOT SCALE = 48.0000' / 1" =	CHECKED - JCM	REVISED -
PLOT DATE = 3/21/2016	DATE - 03/21/2016	REVISED -

STATE OF ILLINOIS
DEPARTMENT OF TRANSPORTATION

SUMMARY OF QUANTITIES

SCALE:	SHEET 7 OF 11 SHEETS	STA. N/A	TO STA. N/A
--------	----------------------	----------	-------------

F.A.P. RTE. 846	SECTION DIHSRR2016-01	COUNTY WILL	TOTAL SHEETS 146	SHEET NO. 10
ILLINOIS FED. AID PROJECT			CONTRACT NO. 62B32	

SIGNING										
STREET	STATION	OFFSET		SIGN #	SIGN DESCRIPTION	72000100	72000200	72400100	72800100	REMARKS
		LT.	RT.			SIGN PANEL - TYPE 1	SIGN PANEL - TYPE 2	REMOVE SIGN PANEL ASSEMBLY - TYPE A	TELESCOPING STEEL SIGN SUPPORT	
		SO FT	SO FT			EACH	FOOT			
HOFF	54+00		17.5	W10-8	TRAINS MAY EXCEED 80 MPH HI-PRISMATIC	9.0			18	POST
HOFF	55+24	22.2		R8-8	DO NOT STOP ON TRACKS	5.0				ON SIGNAL
HOFF	54+95		28.8	R10-11a R8-8	NO TURN ON RED DO NOT STOP ON TRACKS	7.5 5.0				ON SIGNAL
HOFF	54+91		35.3	R10-6	STOP HERE ON RED	6.0			18	POST
HOFF	55+83	31.8		W10-8 R8-8	TRAINS MAY EXCEED 80 MPH DO NOT STOP ON TRACKS HI-PRISMATIC	9.0 5.0			21	POST
HOFF	55+60		38.2	R8-8	DO NOT STOP ON TRACKS	5.0			18	POST
HOFF	55+65		41.3	R1-1 W4-4P	STOP CROSS TRAFFIC DOES NOT STOP			1		REMOVE
HOFF	56+40	46.3		R10-11a	NO TURN ON RED	7.5				NEAR RIGHT TURN SIGNAL HEAD
HOFF	56+09		21.7	R1-1 W4-4P M3-6 R6-2L	STOP CROSS TRAFFIC DOES NOT STOP DIVIDED HIGHWAY ONE WAY			1		REVERSE SIDE REMOVE
HOFF	56+40	46.3		R10-5	LEFT ON GREEN ARROW ONLY	7.5				ON SIGNAL HEAD
HOFF	56+53	35.0		R10-5	LEFT ON GREEN ARROW ONLY	7.5				ADJACENT TO LEFT TURN SIGNAL FACE
HOFF	57+76	20.8		R1-1 W4-4P M3-6 R6-2L	STOP CROSS TRAFFIC DOES NOT STOP DIVIDED HIGHWAY ONE WAY			1		REMOVE REVERSE SIDE
HOFF	58+08	49.6		W4-4P R1-1	CROSS TRAFFIC DOES NOT STOP STOP			1		REMOVE
HOFF	61+98	22.7		W10-1 W10-9P	RR CROSSING NO TRAIN HORN HI-PRISMATIC	9.0 5.0			20	POST
IL RTE 53	72+36		56.3	W10-2 W16-8P W10-9P	GRADE CROSSING ADVANCE WARNING HOFF RD. NO TRAIN HORN HI-PRISMATIC	9.0 1.7 5.0			21	POST
IL RTE 53	75+65	23.1		R10-5	LEFT ON GREEN ARROW ONLY	7.5				ADJACENT TO LEFT TURN SIGNAL FACE
HOFF	57+32		40.5	R10-5	LEFT ON GREEN ARROW ONLY	7.5				ON SIGNAL HEAD
IL RTE 53	75+64	50.7		R10-11a	NO TURN ON RED	7.5				ON SIGNAL HEAD
IL RTE 53	77+69		5.0	R4-7	KEEP RIGHT	5.0			18	POST
IL RTE 53	77+34		3.8	R4-7	KEEP RIGHT			1		REMOVE
IL RTE 53	77+81		5.0	R6-2R	ONE WAY	5.0			18	POST
IL RTE 53	77+48		5.0	R6-2R	ONE WAY			1		REMOVE
IL RTE 53	78+06		21.4	R10-5	LEFT ON GREEN ARROW ONLY	7.5				ON SIGNAL HEAD
IL RTE 53	78+50			R5-1	DO NOT ENTER	6.3			18	POST
IL RTE 53	78+71	9.4		R5-1	DO NOT ENTER			1		REMOVE
IL RTE 53	78+50	68.0		R5-1	DO NOT ENTER	6.3			18	POST
IL RTE 53	78+77	59.3		R5-1	DO NOT ENTER			1		REMOVE
IL RTE 53	79+66			RS-06B M6-1	HIKING LEFT ARROW	4.0 2.2			19	POST
IL RTE 53	79+66	11.0		RS-06B M6-1	HIKING LEFT ARROW			1		REMOVE
IL RTE 53	81+35	62.2		W10-2 W16-8P W10-9P	GRADE CROSSING ADVANCE WARNING HOFF RD. NO TRAIN HORN HI-PRISMATIC	9.0 1.7 5.0			21	POST
IL RTE 53	81+85	60.2		-	DESTINATION GUIDE SIGN		10		18	POST
IL RTE 53	81+65	56.3		-	DESTINATION GUIDE SIGN			1		REMOVE
TOTALS						178	10	10	246	

FILE NAME: c:\pwworking\matthew.libera\working\1445\0162832-111\sheet01.dwg



USER NAME: matthew.libera
 PLOT SCALE: 1/4" = 10'-0"
 PLOT DATE: 5/19/2016

DESIGNED: MTL
 DRAWN: DAB
 CHECKED: JCM
 DATE: 03/21/2016

REVISED: 05/10/2016
 REVISED:
 REVISED:
 REVISED:

STATE OF ILLINOIS
 DEPARTMENT OF TRANSPORTATION

SCHEDULES OF QUANTITIES

SCALE: NONE SHEET 3 OF 4 SHEETS STA. TO STA.

F.A.P. RTE.	SECTION	COUNTY	TOTAL SHEETS	SHEET NO.
846	DIHSRR2016-01	WILL	146	20
CONTRACT NO.			62B32	
ILLINOIS FED. AID PROJECT				

LANDSCAPING AND EROSION CONTROL																								
STATION	STATION	STREET	OFFSET	20101000	21101625	25000210	25000310	25000400	25000600	25100115	25100630	25200200	28000250	28000305	28000315	28000400	28000510	28100107	28100109	28200200	K0029614	K0029624		
				TEMPORARY FENCE	TOPSOIL FURNISH AND PLACE, 6"	SEEDING, CLASS 2A	SEEDING, CLASS 4	NITROGEN FERTILIZER NUTRIENT	POTASSIUM FERTILIZER NUTRIENT	MULCH, METHOD 2	EROSION CONTROL BLANKET	SUPPLEMENTAL WATERING	TEMPORARY EROSION CONTROL SEEDING	TEMPORARY DITCH CHECKS	AGGREGATE DITCH CHECKS	PERIMETER EROSION BARRIER	INLET FILTERS	STONE RIPRAP, CLASS A4	STONE RIPRAP, CLASS A5	FILTER FABRIC	WEED CONTROL, AQUATIC	WEED CONTROL, TEASEL		
FOOT	SO YD	ACRE	ACRE	POUND	POUND	ACRE	SO YD	UNIT	POUND	FOOT	TON	FOOT	EACH	SO YD	SO YD	SO YD	GALLON	GALLON						
55+41.40	58+60.00	HOFF	LT	153	322	0.03	0.04	3	3			322	16			131	1				0.04	0.03		
55+41.40	58+60.00	HOFF	RT	87	340	0.05	0.03	4	4			340	17		138	72			229	229	0.03	0.04		
58+60.00	59+74.00	HOFF	LT	204	40		0.01					40	2			114					0.01			
58+60.00	59+74.00	HOFF	RT	224	40		0.01					40	2			114					0.01			
71+30.00	74+25.00	IL RT 53	-		285	0.04		4	4	0.02		183	14		3	296						0.04		
74+25.00	79+00.00	IL RT 53	LT	120	426	0.07	0.02	6	6			426	21		138	1.2			7		12	0.02	0.07	
74+25.00	79+00.00	IL RT 53	-		703	0.11		10	10	0.04		514	35		4	383	4						0.11	
74+25.00	79+00.00	IL RT 53	RT	112	189		0.04					189	9					397			397	0.04		
79+00.00	82+60.68	IL RT 53	LT		590	0.11	0.02	10	10			590	30			1.8		214			8	0.02	0.10	
79+00.00	82+60.68	IL RT 53	-		682	0.11		10	10	0.03		541	34		3	396							0.11	
79+00.00	82+60.68	IL RT 53	RT																					
TOTALS				900	3617	0.52	0.17	47	47	0.09		3185	180		10	276	3.0	1720	5	404	229	646	0.2	0.5

PAVEMENT MARKINGS																		
STATION	STATION	STREET	OFFSET	78000100	78000200				78000400			78000500	78000600	78000650	78100100	78300100		
				THERMOPLASTIC PAVEMENT MARKING - LETTERS AND SYMBOLS	THERMOPLASTIC PAVEMENT MARKING - LINE 4"				THERMOPLASTIC PAVEMENT MARKING - LINE 6"			THERMOPLASTIC PAVEMENT MARKING - LINE 8"	THERMOPLASTIC PAVEMENT MARKING - LINE 12"	THERMOPLASTIC PAVEMENT MARKING - LINE 24"	RAISED REFLECTIVE PAVEMENT MARKER	PAVEMENT MARKING REMOVAL		
				SO FT	FOOT				FOOT			FOOT	FOOT	FOOT	EACH	SO FT		
				SOLID, WHITE	SKIP/DASH, WHITE	SOLID, YELLOW	DOUBLE YELLOW, 11"C-C	SOLID, WHITE	DIAGONAL, WHITE	SKIP/DASH, WHITE								
54+92.60	58+60.00	HOFF	LT		189				84			90	26					
54+92.60	58+60.00	HOFF	RT		208				473			84	84	17				
54+92.60	58+60.00	HOFF	-				252					23				194		
58+60.00	60+09.05	HOFF	LT		61	114								22				
58+60.00	59+74.00	HOFF	RT			114												
58+60.00	59+74.00	HOFF	-				228											
57+14.10	79+00.00	IL RT 53	LT		73	215	45	160	376		132			66	10	15		
56+77.45	79+00.00	IL RT 53	RT		73	104	266	175	306					49	8	89		
56+77.45	79+00.00	IL RT 53	-													2358		
79+00.00	82+60.68	IL RT 53	LT		73	360	240	361	194						6	80		
79+00.00	82+60.68	IL RT 53	RT				174	396								58		
79+00.00	85+63.19	IL RT 53	-													1677		
SUBTOTAL					280	1304	725	1092	480	876	557	132	197	110		197	24	4471
TOTAL					280	3601				1565			197	110		197	24	4471

TEMPORARY TRAFFIC CONTROL										
STATION	STATION	STREET	70300210	70300220	70300240	70300280	70400100	70600260	78200011	Z0030850
			TEMPORARY PAVEMENT MARKING LETTERS AND SYMBOLS	TEMPORARY PAVEMENT MARKING - LINE 4"	TEMPORARY PAVEMENT MARKING - LINE 6"	TEMPORARY PAVEMENT MARKING - LINE 24"	TEMPORARY CONCRETE BARRIER	IMPACT ATTENUATORS, TEMPORARY (FULLY REDIRECTIVE, NARROW), TEST LEVEL 3	BARRIER WALL REFLECTORS, TYPE C	TEMPORARY INFORMATION SIGNING
SO FT	FOOT	FOOT	FOOT	FOOT	FOOT	EACH	EACH	SO FT		
53+14.00	58+60.00	HOFF				267				25.7
58+60.00	60+09.05	HOFF								25.7
67+30.00	79+00.00	IL RT 53	145	5905	441	12	512	1	46	25.7
79+00.00	84+00.00	IL RT 53		3625			50			25.7
84+00.00	88+60.69	IL RT 53		1405						
TOTALS			145	10935	441	279	562	1	46	103

GUARDRAIL									
STATION	STATION	STREET	OFFSET	63000001	63000003	63000025	63100167	78200410	78201000
				STEEL PLATE BEAM GUARDRAIL, TYPE A, 6 FOOT POSTS	STEEL PLATE BEAM GUARDRAIL, TYPE A 9 FOOT POSTS	STEEL PLATE BEAM GUARDRAIL, ATTACHED TO STRUCTURES	TRAFFIC BARRIER TERMINAL, TYPE 1 (SPECIAL) TANGENT	GUARDRAIL MARKERS, TYPE A	TERMINAL MARKER - DIRECT APPLIED
FOOT	FOOT	FOOT	EACH	EACH	EACH	EACH	EACH		
55+41.70	59+80.22	HOFF	LT	187.5		25	1	11	1
55+41.70	59+74.00	HOFF	RT	225.0		25	1	14	1
75+47.90	75+85.36	IL 53	RT		37.5			2	
TOTALS				412.5	37.5	50	2	27	2

AECOM	USER NAME : matthew.libero	DESIGNED - MTL	REVISED - 05/10/2016	STATE OF ILLINOIS DEPARTMENT OF TRANSPORTATION	SCHEDULES OF QUANTITIES				F.A.P. RTE. 846	SECTION D1HSRR2016-D1	COUNTY WILL	TOTAL SHEETS 146	SHEET NO. 21	
	PLOT SCALE : 40,0000' / 1"	CHECKED - JCM	REVISED -		SCALE: NONE	SHEET 4 OF 4 SHEETS	STA.	TO STA.	CONTRACT NO. 62B32					
	PLOT DATE : 5/10/2016	DATE - 03/21/2016	REVISED -		ILLINOIS FED. AID PROJECT									

TRAFFIC CONTROL AND PROTECTION GENERAL NOTES

TRAFFIC CONTROL AND PROTECTION SHALL BE PERFORMED IN ACCORDANCE WITH THE TRAFFIC CONTROL PLAN, THESE NOTES, APPLICABLE SPECIAL PROVISIONS, AND SECTION 701 OF THE STANDARD SPECIFICATIONS AS AMENDED BY THE SPECIAL PROVISIONS.

THE TYPE III BARRICADES ARE TO BE PLACED IN ACCORDANCE WITH STANDARD 701901 UNLESS AUTHORIZED BY THE ENGINEER TO USE AN ALTERNATE ARRANGEMENT.

EXISTING TRAFFIC CONTROL SIGNS AND DEVICES WILL BE REMOVED BY THE CONTRACTOR AFTER THE TRAFFIC CONTROL REQUIREMENTS ARE MET OR AS AUTHORIZED BY THE ENGINEER; ANY SIGNS OR DEVICES LEFT IN PLACE AT THIS TIME ARE TO BE RELOCATED, MAINTAINED AND PROTECTED FROM DAMAGE BY THE CONTRACTOR AND ANY DAMAGED OR LOST SIGNS SHALL BE REPLACED BY THE CONTRACTOR.

TYPE I OR TYPE II BARRICADES, DRUMS, OR VERTICAL PANELS WITH MONODIRECTIONAL STEADY-BURN LIGHTS SHALL BE REQUIRED ALONG TEMPORARY ROADS, DETOURS AND SIDE STREETS TO DELINEATE THE TRAVELED WAY WITHIN THE CONSTRUCTION ZONE. THE MAXIMUM SPACING FOR THESE DEVICES SHALL BE 50 FEET CENTER TO CENTER.

IF DROP OFF IS GREATER THAN TWO (2) INCHES, BACK OF TCB MUST BE GREATER THAN SIX (6) INCHES FROM EDGE OF DROP OFF. TCB MUST BE PINNED WHEN THE DISTANCE BEHIND THE TCB IS GREATER THAN (6) INCHES BUT LESS THAN OR EQUAL TO TWELVE (12) INCHES. BETWEEN TWELVE (12) INCHES AND TWENTY FOUR (24) INCHES, PINNING IS SUBJECT TO THE RESULTS OF A RISK ASSESSMENT. NO PINNING IS REQUIRED AT DISTANCES GREATER THAN TWENTY FOUR (24) INCHES MUST COMPLY WITH HIGHWAY STANDARD 704001. IT IS DESIRABLE TO MINIMIZE PINNING WHEN POSSIBLE.

TYPE I OR TYPE II BARRICADES WITH TWO-WAY FLASHING LIGHTS SHALL BE REQUIRED AT ALL OPEN TRENCHES, EXCAVATIONS, OPEN OR EXPOSED SEWER STRUCTURES, TRANSVERSE PAVEMENT JOINTS, MATERIALS OR EQUIPMENT WITHIN THE RIGHT-OF-WAY (NUMBER AND SPACING DEPENDS ON THE CONDITIONS); AND AT LOCATIONS DESIGNATED BY THE ENGINEER OR LOCAL LAW ENFORCEMENT AGENCIES.

TYPE I, II AND/OR III BARRICADES WITH TWO-WAY FLASHING LIGHTS WILL BE REQUIRED TO GUIDE TRAFFIC AWAY FROM PAVEMENT AREAS CLOSED FOR CONSTRUCTION.

THE COST OF SUPPLYING, ERECTING, AND MAINTAINING BARRICADES, WARNING LIGHTS, AND SIGNS SHALL BE INCLUDED IN THE CONTRACT LUMP SUM PRICE FOR TRAFFIC CONTROL AND PROTECTION (SPECIAL).

CHANGEABLE L.E.D. MESSAGE BOARDS SHALL BE IN OPERATION A MINIMUM 3 DAYS IN ADVANCE OF CONSTRUCTION, AND REMAIN OPERATIONAL THROUGHOUT CONSTRUCTION. MESSAGE BOARDS SHALL BE REQUIRED ON IL ROUTE 53 IN ADVANCE OF THE PROJECT TO DIRECT MOTORISTS TO TRAFFIC STAGES.

ADDITIONAL TEMPORARY LIGHTS WILL BE PROVIDED FOR CONSTRUCTION WORK DURING NIGHT HOURS.

△ ANY PROPOSED ACTIVITY IN THE VICINITY OF A HIGHWAY-RAIL GRADE CROSSING MUST ADHERE TO THE GUIDELINES SET FORTH IN THE MANUAL ON UNIFORM TRAFFIC CONTROL DEVICES (MUTCD), UNDER SECTION 6G.18, WHICH STATES: "WHEN GRADE CROSSINGS EXIST EITHER WITHIN OR IN THE VICINITY OF A TTC ZONE, LANE RESTRICTIONS, FLAGGING, OR OTHER OPERATIONS SHALL NOT CREATE CONDITIONS WHERE VEHICLES CAN BE QUEUED ACROSS THE TRACKS. IF THE QUEUING OF THE VEHICLES ACROSS THE TRACKS CANNOT BE AVOIDED, A UNIFORMED LAW ENFORCEMENT OFFICER OR FLAGGER SHALL BE PROVIDED AT THE CROSSING TO PREVENT VEHICLES FROM STOPPING ON THE TRACKS, EVEN IF AUTOMATIC WARNING DEVICES ARE IN PLACE."

MAINTENANCE OF TRAFFIC NOTES (GENERAL)

SEE STAGES OF CONSTRUCTION AND TRAFFIC CONTROL SHEETS FOR PROPOSED TYPICAL SECTIONS OF VARIOUS ROADWAYS FOR ROADWAY-SPECIFIC TRAFFIC STAGING AND CONSTRUCTION NOTES.

THE PURPOSE FOR CONSTRUCTION STAGING IS TO FACILITATE TRAFFIC FLOW AND MINIMIZE DELAYS TO THE MOTORIST. THE CONTRACTOR MAY IMPROVE OR MODIFY THE SEQUENCE OF CONSTRUCTION AS SHOWN ON THE PLANS HEREIN. ANY CONTRACTOR PROPOSED TRAFFIC CONTROL PLANS SHALL BE SUBMITTED FOR REVIEW BY AND THE WRITTEN APPROVAL OF THE ENGINEER.

THE CONTRACTOR SHALL COORDINATE ALL CONSTRUCTION STAGING OPERATIONS WITH THE RAILROAD. RAILROAD OPERATIONS SHALL BE ULTIMATELY RESPONSIBLE FOR ANY SIGNAL AND CROSSING GATE MODIFICATIONS REQUIRED AS PART OF ROADWAY STAGING OPERATIONS.

ALL TRAFFIC CONTROL SHOWN IN THESE PLANS SHALL BE INCLUDED IN THE PAY ITEM OF TRAFFIC CONTROL AND PROTECTION (SPECIAL).

THE EXACT NUMBER, LOCATION AND SPACING OF ALL SIGNS AND TRAFFIC CONTROL DEVICES MAY BE ADJUSTED TO FIT FIELD CONDITIONS, AS DIRECTED BY THE ENGINEER.

THE FURNISHING, INSTALLATION, RELOCATION AND REMOVAL OF ALL TRAFFIC CONTROL SIGNS, DETOUR SIGNS, AND TRAFFIC CONTROL DEVICES SHOWN ON THESE STAGE CONSTRUCTION AND MAINTENANCE OF TRAFFIC PLANS AND THE APPLICABLE IDOT TRAFFIC CONTROL STANDARDS SHALL BE PAID FOR UNDER THE PAY ITEM TRAFFIC CONTROL AND PROTECTION (SPECIAL). THE CONTRACTOR SHALL PROVIDE ANY ADDITIONAL SIGNS AS REQUIRED BY THE ENGINEER. THE COST OF WHICH WILL ALSO BE INCLUDED IN "TRAFFIC CONTROL AND PROTECTION (SPECIAL)".

ALL CONSTRUCTION WORK LOCATED ON THE WEST LEG OF HOFF ROAD SHALL BE PERFORMED AFTER DAYLIGHT HOURS. THE CONTRACTOR SHALL COORDINATE WORK HOURS WITH THE ABRAHAM LINCOLN NATIONAL CEMETERY, THOMAS KOERTING AT (317) 916-3798 OR SEAN BAUMGARTNER AT (815) 423-9958.

CHANGEABLE MESSAGE BOARDS DISPLAYING "NEW TRAFFIC PATTERN, STARTING [INSERT DATE]" SHALL BE PLACED ON NORTHBOUND AND SOUTHBOUND IL53 IN ADVANCE OF THE SIGNALIZED INTERSECTION TWO (2) WEEKS PRIOR TO ACTIVATION OF THE NEW TRAFFIC SIGNALS. THE DAY OF THE SIGNAL ACTIVATION, THE CHANGEABLE MESSAGE BOARDS SHALL DISPLAY "NEW SIGNAL AHEAD." IN ADDITION, W3-3 "SIGNAL AHEAD" SIGNS SHALL BE PLACED ON IL 53 ADVANCE OF THE INTERSECTION WITH W16-15P "NEW" PLAQUES AND RED FLAGS ATTACHED TO THE SIGN. THE RED FLAGS SHALL BE REMOVED AFTER TWO (2) WEEKS OF THE SIGNAL BEING IN SERVICE.

RAILROAD NOTES (GENERAL)

ALL RAILROAD WARNING DEVICES SHALL BE CONSTRUCTED/REMOVED/MODIFIED BY UPRR FORCES AND ARE NOT INCLUDED IN THE IDOT LETTING. COORDINATE CONSTRUCTION OF ROADWAY AND IDOT MOT WITH UPRR.

RAILROAD CONTRACTOR SHALL BE RESPONSIBLE TO REMOVE AND DISPOSE OF SIGNAL FOUNDATION.

RAILROAD FLAGGERS SHALL BE REQUIRED DURING RAILROAD SIGNAL CONSTRUCTION, INCLUDING IDOT STAGING, AT NO COST TO THE IDOT CONTRACTOR.

FILE NAME: c:\pwworking\another\jibero\transportation\dw12458\012212\sh-staging-01.dgn

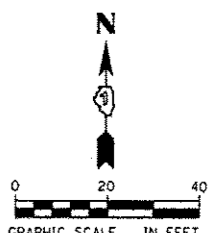
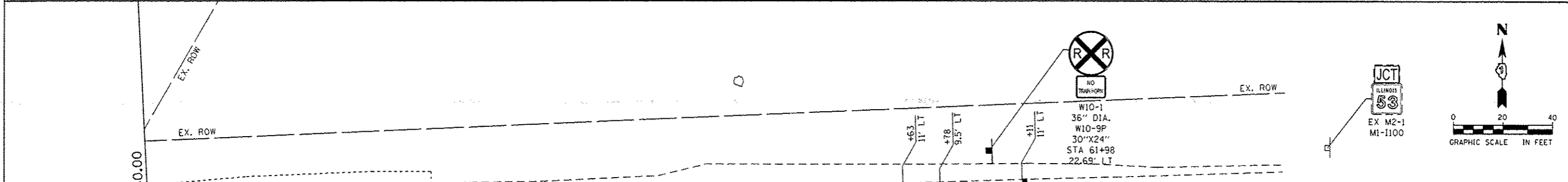
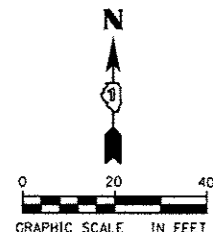
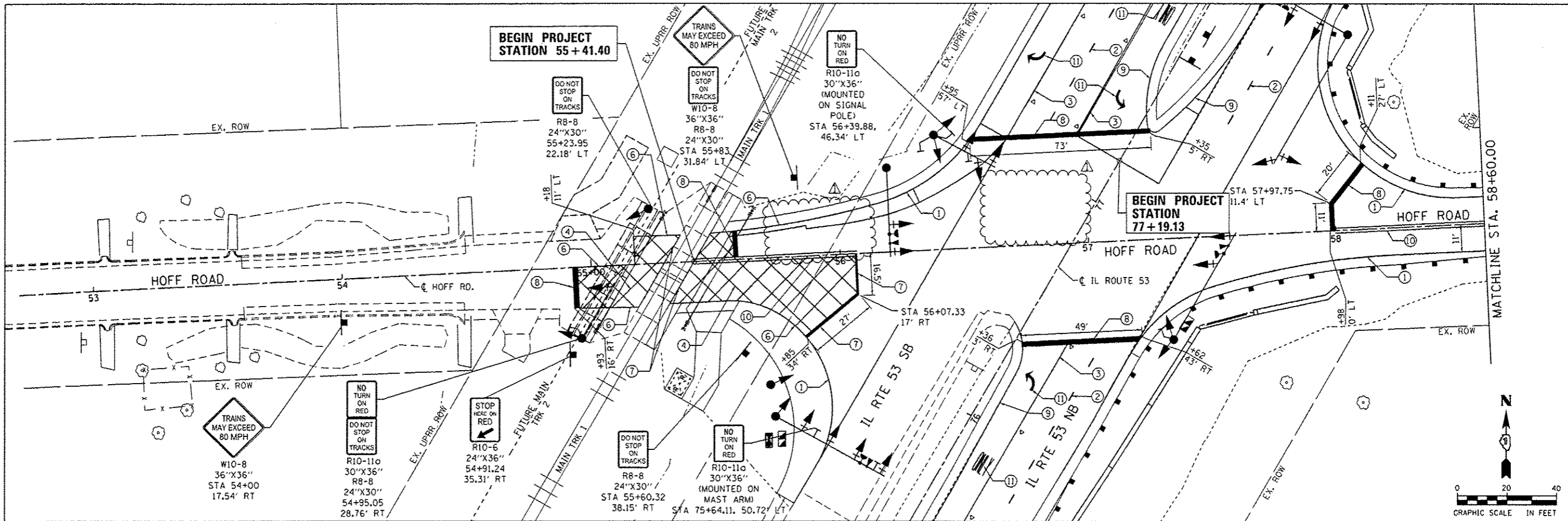


USER NAME: matthew.libera	DESIGNED - MTL	REVISED - 05/10/2016
PLLOT SCALE: 28.0000' / in.	DRAWN - DAB	REVISED -
PLLOT DATE: 5/11/2016	CHECKED - JCM	REVISED -
	DATE - 03/21/2016	REVISED -

STATE OF ILLINOIS
DEPARTMENT OF TRANSPORTATION

STAGES OF CONSTRUCTION AND TRAFFIC CONTROL GENERAL STAGING NOTES			
SCALE: NTS	SHEET 1 OF 13 SHEETS	STA. N/A	TO STA. N/A

F.A.P. RTE.	SECTION	COUNTY	TOTAL SHEETS	SHEET NO.
846	DIHSRR2016-01	WILL	146	30
CONTRACT NO. 62B32			ILLINOIS FED. AID PROJECT	



NOTES:

REMOVE ANY EXISTING PAVEMENT MARKINGS AS REQUIRED IF IN CONFLICT WITH PAVEMENT MARKINGS SHOWN ON SIGNING AND PAVEMENT MARKING PLANS

REFER TO IDOT DISTRICT 1 STANDARD DETAILS TC-11, TC-13, AND TC-23 FOR PAVEMENT MARKING DETAILS.

THERMOPLASTIC PAVEMENT MARKING - LINE 4" (WHITE SKIP DASH, 10' LINE 30' SPACE) SHALL BE APPLIED ALONG IL 53 NB FROM STA. 67+30 TO STA. 85+95 AND ALONG IL 53 SB FROM STA. 77+20 TO STA. 88+60

THERMOPLASTIC PAVEMENT MARKING - LINE 4" (SOLID YELLOW) SHALL BE APPLIED ALONG THE IL 53 NB RECONSTRUCTED MEDIAN SHOULDER FROM STA. 71+30 TO STA. 82+96.

- PAVEMENT MARKING LEGEND**
- ① THERMOPLASTIC PAVEMENT MARKING - LINE 4" (SOLID WHITE)
 - ② THERMOPLASTIC PAVEMENT MARKING - LINE 4" (WHITE SKIP DASH, 10' LINE 30' SPACE)
 - ③ THERMOPLASTIC PAVEMENT MARKING - LINE 6" (SOLID WHITE)
 - ④ THERMOPLASTIC PAVEMENT MARKING - LINE 6" (WHITE DIAGONALS 96" C-C AT 45° TO PVM)
 - ⑤ THERMOPLASTIC PAVEMENT MARKING - LINE 6" (WHITE SKIP DASH, 2' LINE 6' SPACE)
 - ⑥ THERMOPLASTIC PAVEMENT MARKING - LINE 8" (SOLID WHITE)
 - ⑦ THERMOPLASTIC PAVEMENT MARKING - LINE 12" (SOLID WHITE)
 - ⑧ THERMOPLASTIC PAVEMENT MARKING - LINE 24" (SOLID WHITE)
 - ⑨ THERMOPLASTIC PAVEMENT MARKING - LINE 4" (SOLID YELLOW)
 - ⑩ THERMOPLASTIC PAVEMENT MARKING - LINE 4" (DOUBLE YELLOW, 11" C-C)
 - ⑪ THERMOPLASTIC PAVEMENT MARKING - LETTERS AND SYMBOLS

- RAISED REFLECTIVE PAVEMENT MARKERS LEGEND**
- ◁ ONE-WAY CRYSTAL MARKER



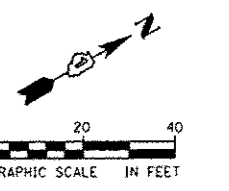
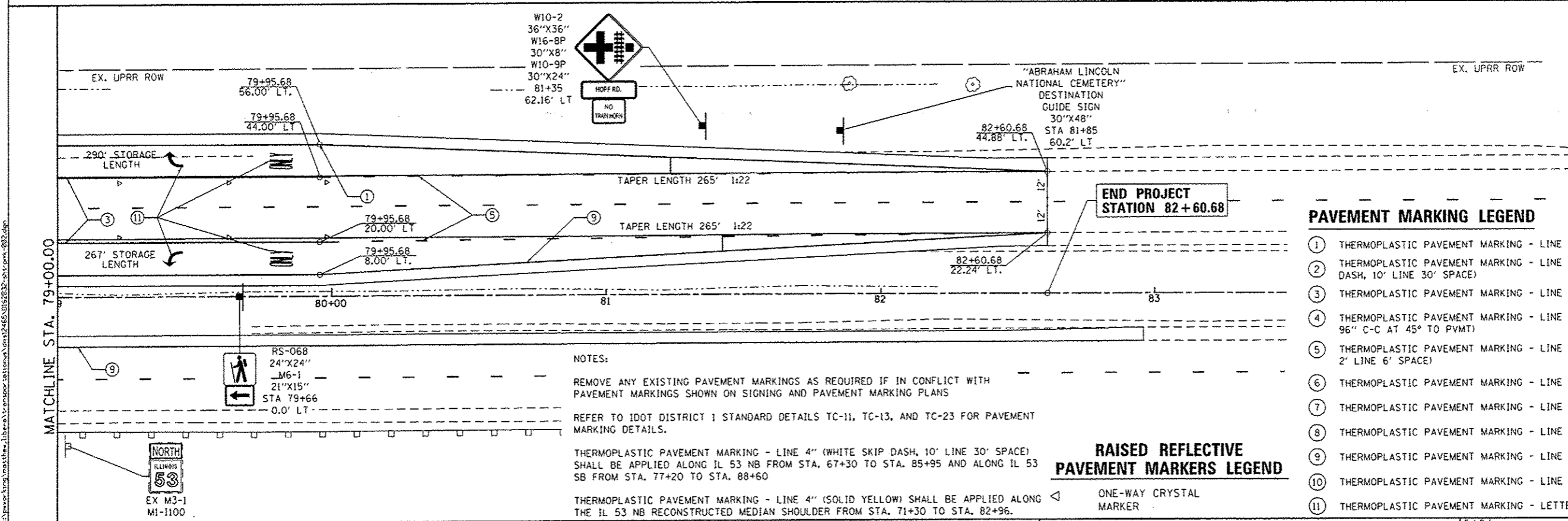
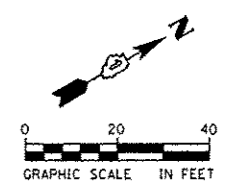
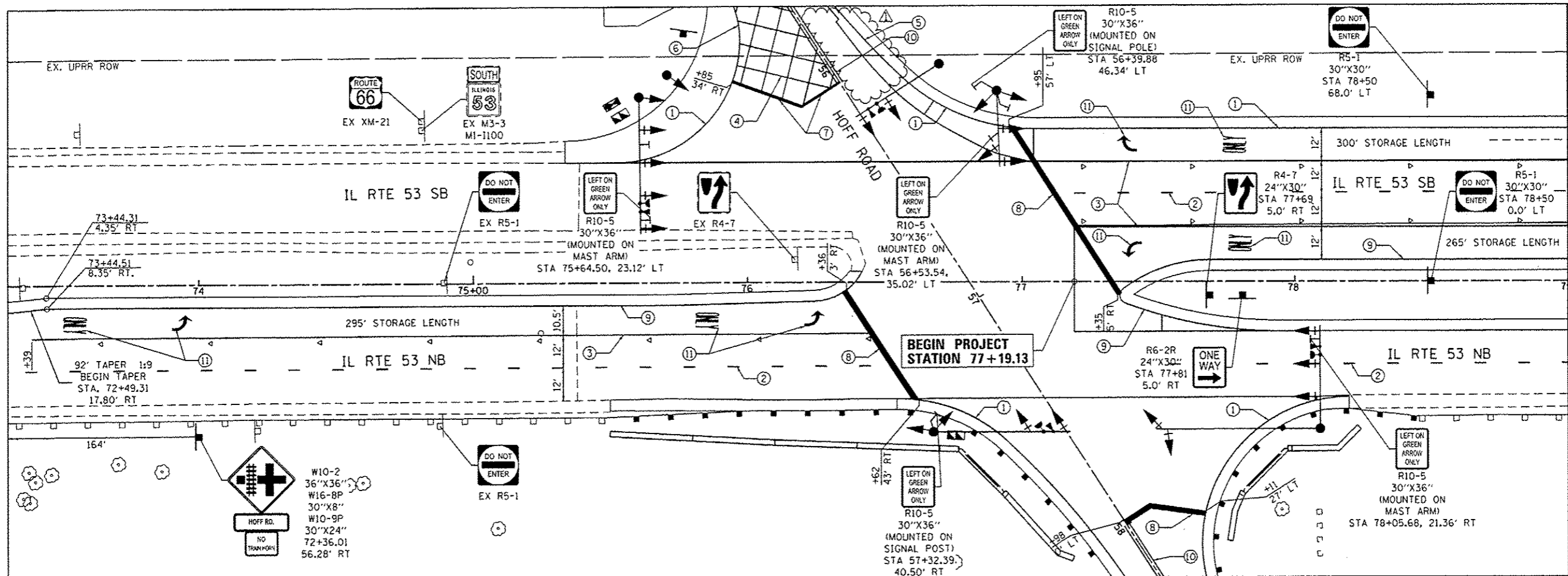
USER NAME - matthew.libero	DESIGNED - MTL	REVISED - 05/10/2016
DRAWN - DAB	CHECKED - JCM	DATE - 03/21/2016
PLLOT SCALE - 48,000 ft / in.		
PLLOT DATE - 5/10/2016		

STATE OF ILLINOIS
DEPARTMENT OF TRANSPORTATION

SIGNING AND PAVEMENT MARKING PLANS

SCALE: 1"=20' SHEET 1 OF 2 SHEETS STA. 53+00.00 TO STA. 64+00.00

F.A.P. RTE. 846	SECTION DIHSRR2016-01	COUNTY WILL	TOTAL SHEETS 146	SHEET NO. 62
CONTRACT NO. 62B32				ILLINOIS FED. AID PROJECT



- PAVEMENT MARKING LEGEND**
- ① THERMOPLASTIC PAVEMENT MARKING - LINE 4" (SOLID WHITE)
 - ② THERMOPLASTIC PAVEMENT MARKING - LINE 4" (WHITE SKIP DASH, 10' LINE 30' SPACE)
 - ③ THERMOPLASTIC PAVEMENT MARKING - LINE 6" (SOLID WHITE)
 - ④ THERMOPLASTIC PAVEMENT MARKING - LINE 6" (WHITE DIAGONALS 96" C-C AT 45° TO PVMT)
 - ⑤ THERMOPLASTIC PAVEMENT MARKING - LINE 6" (WHITE SKIP DASH, 2' LINE 6' SPACE)
 - ⑥ THERMOPLASTIC PAVEMENT MARKING - LINE 8" (SOLID WHITE)
 - ⑦ THERMOPLASTIC PAVEMENT MARKING - LINE 12" (SOLID WHITE)
 - ⑧ THERMOPLASTIC PAVEMENT MARKING - LINE 24" (SOLID WHITE)
 - ⑨ THERMOPLASTIC PAVEMENT MARKING - LINE 4" (SOLID YELLOW)
 - ⑩ THERMOPLASTIC PAVEMENT MARKING - LINE 4" (DOUBLE YELLOW, 11" C-C)
 - ⑪ THERMOPLASTIC PAVEMENT MARKING - LETTERS AND SYMBOLS
- RAISED REFLECTIVE PAVEMENT MARKERS LEGEND**
- ◁ ONE-WAY CRYSTAL MARKER

NOTES:

REMOVE ANY EXISTING PAVEMENT MARKINGS AS REQUIRED IF IN CONFLICT WITH PAVEMENT MARKINGS SHOWN ON SIGNING AND PAVEMENT MARKING PLANS

REFER TO IDOT DISTRICT 1 STANDARD DETAILS TC-11, TC-13, AND TC-23 FOR PAVEMENT MARKING DETAILS.

THERMOPLASTIC PAVEMENT MARKING - LINE 4" (WHITE SKIP DASH, 10' LINE 30' SPACE) SHALL BE APPLIED ALONG IL 53 NB FROM STA. 67+30 TO STA. 85+95 AND ALONG IL 53 SB FROM STA. 77+20 TO STA. 88+60

THERMOPLASTIC PAVEMENT MARKING - LINE 4" (SOLID YELLOW) SHALL BE APPLIED ALONG THE IL 53 NB RECONSTRUCTED MEDIAN SHOULDER FROM STA. 71+30 TO STA. 82+96.

AECOM	USER NAME : matthew.libere	DESIGNED - MTL	REVISED - 05/10/2016	STATE OF ILLINOIS DEPARTMENT OF TRANSPORTATION	SIGNING AND PAVEMENT MARKING PLANS		F.A.P. RTE. 846	SECTION DIHSRR2016-01	COUNTY WILL	TOTAL SHEETS 146	SHEET NO. 63		
	PLLOT SCALE : 40,000 ft / in	CHECKED - JCM	REVISED -		SCALE: 1"=20'	SHEET 2 OF 2 SHEETS	STA. 73+00.00 TO STA. 85+00.00	CONTRACT NO. 62B32					
	PLLOT DATE : 5/18/2016	DATE - 03/21/2016	REVISED -		ILLINOIS FED. AID PROJECT								



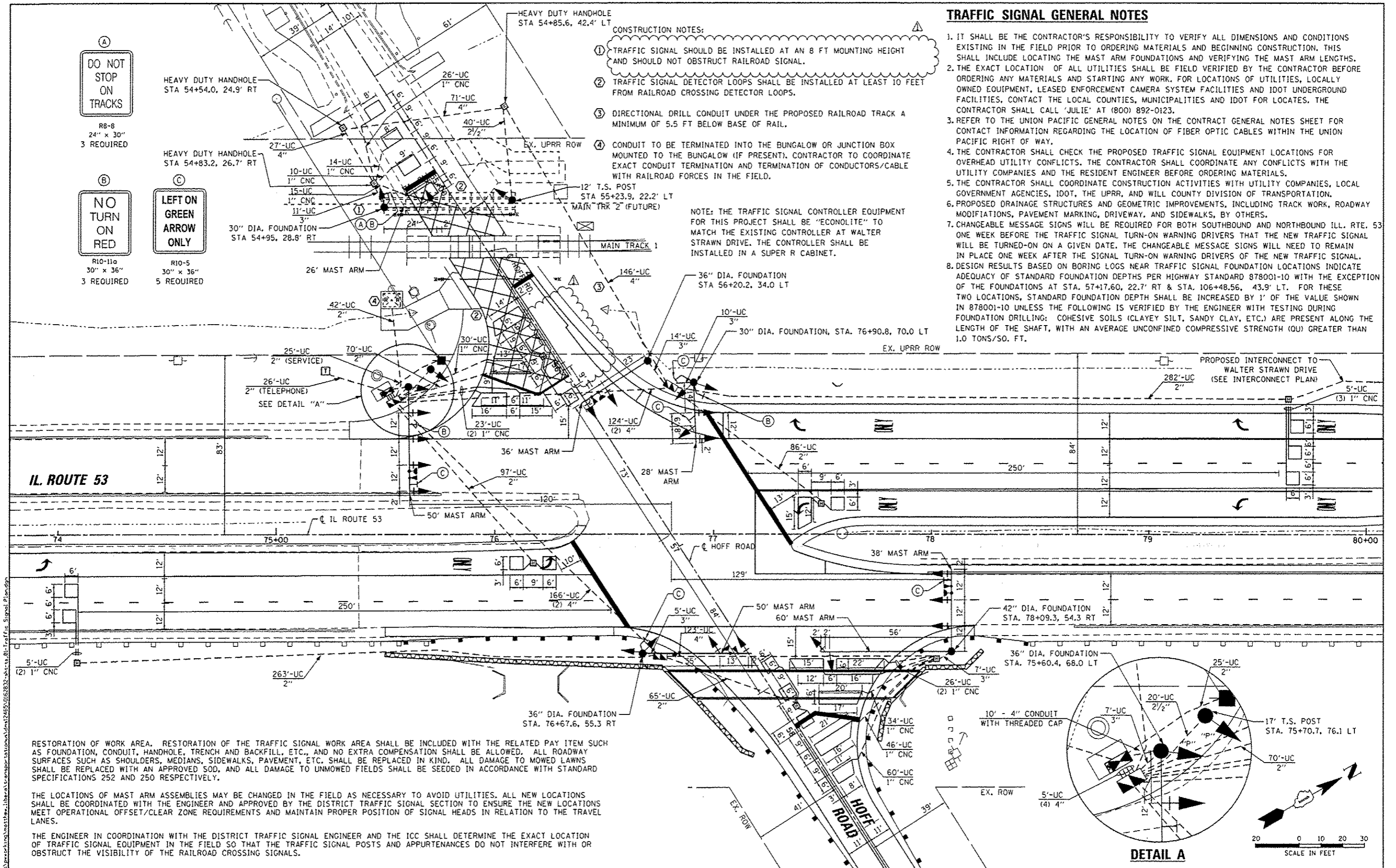
TRAFFIC SIGNAL GENERAL NOTES

- IT SHALL BE THE CONTRACTOR'S RESPONSIBILITY TO VERIFY ALL DIMENSIONS AND CONDITIONS EXISTING IN THE FIELD PRIOR TO ORDERING MATERIALS AND BEGINNING CONSTRUCTION. THIS SHALL INCLUDE LOCATING THE MAST ARM FOUNDATIONS AND VERIFYING THE MAST ARM LENGTHS.
- THE EXACT LOCATION OF ALL UTILITIES SHALL BE FIELD VERIFIED BY THE CONTRACTOR BEFORE ORDERING ANY MATERIALS AND STARTING ANY WORK. FOR LOCATIONS OF UTILITIES, LOCALLY OWNED EQUIPMENT, LEASED ENFORCEMENT CAMERA SYSTEM FACILITIES AND IDOT UNDERGROUND FACILITIES, CONTACT THE LOCAL COUNTIES, MUNICIPALITIES AND IDOT FOR LOCATES. THE CONTRACTOR SHALL CALL 'JULIE' AT (800) 892-0123.
- REFER TO THE UNION PACIFIC GENERAL NOTES ON THE CONTRACT GENERAL NOTES SHEET FOR CONTACT INFORMATION REGARDING THE LOCATION OF FIBER OPTIC CABLES WITHIN THE UNION PACIFIC RIGHT OF WAY.
- THE CONTRACTOR SHALL CHECK THE PROPOSED TRAFFIC SIGNAL EQUIPMENT LOCATIONS FOR OVERHEAD UTILITY CONFLICTS. THE CONTRACTOR SHALL COORDINATE ANY CONFLICTS WITH THE UTILITY COMPANIES AND THE RESIDENT ENGINEER BEFORE ORDERING MATERIALS.
- THE CONTRACTOR SHALL COORDINATE CONSTRUCTION ACTIVITIES WITH UTILITY COMPANIES, LOCAL GOVERNMENT AGENCIES, IDOT, THE UPRR, AND WILL COUNTY DIVISION OF TRANSPORTATION.
- PROPOSED DRAINAGE STRUCTURES AND GEOMETRIC IMPROVEMENTS, INCLUDING TRACK WORK, ROADWAY MODIFICATIONS, PAVEMENT MARKING, DRIVEWAY, AND SIDEWALKS, BY OTHERS.
- CHANGEABLE MESSAGE SIGNS WILL BE REQUIRED FOR BOTH SOUTHBOUND AND NORTHBOUND ILL. RTE. 53 ONE WEEK BEFORE THE TRAFFIC SIGNAL TURN-ON WARNING DRIVERS THAT THE NEW TRAFFIC SIGNAL WILL BE TURNED-ON ON A GIVEN DATE. THE CHANGEABLE MESSAGE SIGNS WILL NEED TO REMAIN IN PLACE ONE WEEK AFTER THE SIGNAL TURN-ON WARNING DRIVERS OF THE NEW TRAFFIC SIGNAL.
- DESIGN RESULTS BASED ON BORING LOGS NEAR TRAFFIC SIGNAL FOUNDATION LOCATIONS INDICATE ADEQUACY OF STANDARD FOUNDATION DEPTHS PER HIGHWAY STANDARD 878001-10 WITH THE EXCEPTION OF THE FOUNDATIONS AT STA. 57+17.60, 22.7' RT & STA. 106+48.56, 43.9' LT. FOR THESE TWO LOCATIONS, STANDARD FOUNDATION DEPTH SHALL BE INCREASED BY 1' OF THE VALUE SHOWN IN 878001-10 UNLESS THE FOLLOWING IS VERIFIED BY THE ENGINEER WITH TESTING DURING FOUNDATION DRILLING: COHESIVE SOILS (CLAYEY SILT, SANDY CLAY, ETC.) ARE PRESENT ALONG THE LENGTH OF THE SHAFT, WITH AN AVERAGE UNCONFINED COMPRESSIVE STRENGTH (QU) GREATER THAN 1.0 TONS/SO. FT.

CONSTRUCTION NOTES:

- TRAFFIC SIGNAL SHOULD BE INSTALLED AT AN 8 FT MOUNTING HEIGHT AND SHOULD NOT OBSTRUCT RAILROAD SIGNAL.
- TRAFFIC SIGNAL DETECTOR LOOPS SHALL BE INSTALLED AT LEAST 10 FEET FROM RAILROAD CROSSING DETECTOR LOOPS.
- DIRECTIONAL DRILL CONDUIT UNDER THE PROPOSED RAILROAD TRACK A MINIMUM OF 5.5 FT BELOW BASE OF RAIL.
- CONDUIT TO BE TERMINATED INTO THE BUNGALOW OR JUNCTION BOX MOUNTED TO THE BUNGALOW (IF PRESENT). CONTRACTOR TO COORDINATE EXACT CONDUIT TERMINATION AND TERMINATION OF CONDUCTORS/CABLE WITH RAILROAD FORCES IN THE FIELD.

NOTE: THE TRAFFIC SIGNAL CONTROLLER EQUIPMENT FOR THIS PROJECT SHALL BE "ECONOLITE" TO MATCH THE EXISTING CONTROLLER AT WALTER STRAWN DRIVE. THE CONTROLLER SHALL BE INSTALLED IN A SUPER R CABINET.



IL ROUTE 53

STATE OF ILLINOIS
DEPARTMENT OF TRANSPORTATION

TRAFFIC SIGNAL INSTALLATION PLAN
IL ROUTE 53 AND HOFF ROAD

F.A.P. RTE.	SECTION	COUNTY	TOTAL SHEETS	SHEET NO.
846	DHSRR2016-01	WILL	146	69
CONTRACT NO. 62B32			ILLINOIS FEB. AID PROJECT	

SCALE: 1"=20' SHEET 1 OF 9 SHEETS STA. TO STA.

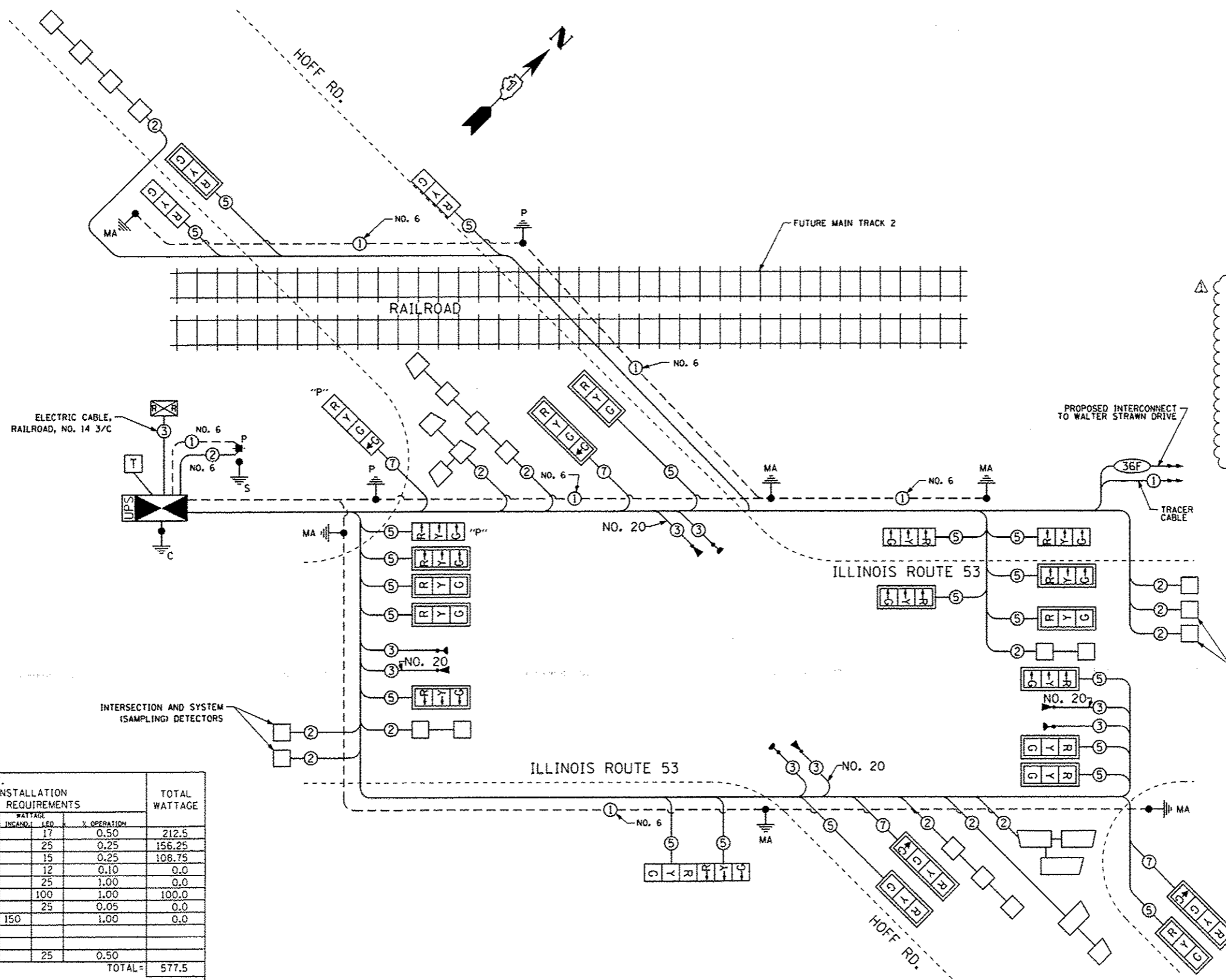
RESTORATION OF WORK AREA. RESTORATION OF THE TRAFFIC SIGNAL WORK AREA SHALL BE INCLUDED WITH THE RELATED PAY ITEM SUCH AS FOUNDATION, CONDUIT, HANDHOLE, TRENCH AND BACKFILL, ETC., AND NO EXTRA COMPENSATION SHALL BE ALLOWED. ALL ROADWAY SURFACES SUCH AS SHOULDERS, MEDIANS, SIDEWALKS, PAVEMENT, ETC. SHALL BE REPLACED IN KIND. ALL DAMAGE TO MOWED LAWNS SHALL BE REPLACED WITH AN APPROVED SOD, AND ALL DAMAGE TO UNMOWED FIELDS SHALL BE SEEDING IN ACCORDANCE WITH STANDARD SPECIFICATIONS 252 AND 250 RESPECTIVELY.

THE LOCATIONS OF MAST ARM ASSEMBLIES MAY BE CHANGED IN THE FIELD AS NECESSARY TO AVOID UTILITIES. ALL NEW LOCATIONS SHALL BE COORDINATED WITH THE ENGINEER AND APPROVED BY THE DISTRICT TRAFFIC SIGNAL SECTION TO ENSURE THE NEW LOCATIONS MEET OPERATIONAL OFFSET/CLEAR ZONE REQUIREMENTS AND MAINTAIN PROPER POSITION OF SIGNAL HEADS IN RELATION TO THE TRAVEL LANES.

THE ENGINEER IN COORDINATION WITH THE DISTRICT TRAFFIC SIGNAL ENGINEER AND THE ICC SHALL DETERMINE THE EXACT LOCATION OF TRAFFIC SIGNAL EQUIPMENT IN THE FIELD SO THAT THE TRAFFIC SIGNAL POSTS AND APPURTENANCES DO NOT INTERFERE WITH OR OBSTRUCT THE VISIBILITY OF THE RAILROAD CROSSING SIGNALS.



USER NAME - matthew.libera	DESIGNED - MJL	REVISED - 05/10/2016
PLOT SCALE - 48,000 ft / in.	DRAWN - MJL	REVISED -
PLOT DATE - 5/18/2016	CHECKED - JAL	REVISED -
	DATE - 03/21/2016	REVISED -



- NOTE:**
1. THE TRAFFIC SIGNAL CONTROLLER SHALL HAVE REMOTE MONITORING CAPABILITIES INCLUDING ALL NECESSARY PERIPHERAL HARDWARE SUCH AS A PHONE MODEM, INTERSECTION MONITOR, ETC. TO ALLOW FOR BOTH REMOTE DIAL-IN ACCESS AND AUTOMATIC CONTROLLER DIAL-OUT REPORTING OF ALARMS. THE COST OF THE NECESSARY ADDITIONAL HARDWARE SHALL BE INCLUDED IN THE UNIT PRICE FOR "RAILROAD, FULL-ACTUATED CONTROLLER AND TYPE SUPER R CABINET, SPECIAL."
 2. THE TRAFFIC SIGNAL CONTROLLER EQUIPMENT FOR THIS PROJECT SHALL BE "ECONOLITE" TO MATCH THE EXISTING CONTROLLER AT WALTER STRAWN DRIVE. THE CONTROLLER SHALL BE INSTALLED IN A SUPER R CABINET.
 3. ANY PROPOSED ACTIVITY IN THE VICINITY OF A HIGHWAY-RAIL GRADE CROSSING MUST ADHERE TO THE GUIDELINES SET FORTH IN THE MANUAL ON UNIFORM TRAFFIC CONTROL DEVICES (MUTCD), UNDER SECTION 6G.18, WHICH STATES: "WHEN GRADE CROSSINGS EXIST EITHER WITHIN OR IN THE VICINITY OF A TTC ZONE, LANE RESTRICTIONS, FLAGGING, OR OTHER OPERATIONS SHALL NOT CREATE CONDITIONS WHERE VEHICLES CAN BE QUEUED ACROSS THE TRACKS. IF THE QUEUING OF THE VEHICLES ACROSS THE TRACKS CANNOT BE AVOIDED, A UNIFORMED LAW ENFORCEMENT OFFICER OR FLAGGER SHALL BE PROVIDED AT THE CROSSING TO PREVENT VEHICLES FROM STOPPING ON THE TRACKS, EVEN IF AUTOMATIC WARNING DEVICES ARE IN PLACE."

I.D.O.T.
TRAFFIC SIGNAL INSTALLATION
ELECTRICAL SERVICE REQUIREMENTS

TYPE	NO. OF LAMPS	WATTAGE INCANDESCENT	LED	% OPERATION	TOTAL WATTAGE
SIGNAL (RED)	25	17	0.50		212.5
(YELLOW)	25	25	0.25		156.25
(GREEN)	29	15	0.25		108.75
ARROW	0	12	0.10		0.0
PED. SIGNAL	--	25	1.00		0.0
CONTROLLER	1	100	1.00		100.0
ILLUM. SIGN	--	25	0.05		0.0
VIDEO SYSTEM	--	150	1.00		0.0
FLASHER		25	0.50		
ENERGY COST TO:					TOTAL = 577.5

ILLINOIS DEPARTMENT OF TRANSPORTATION

ENERGY SUPPLY CONTACT: LUCY ANDERBERG
PHONE: (815) 724-5691
COMPANY: COMMONWEALTH EDISON

CABLE PLAN

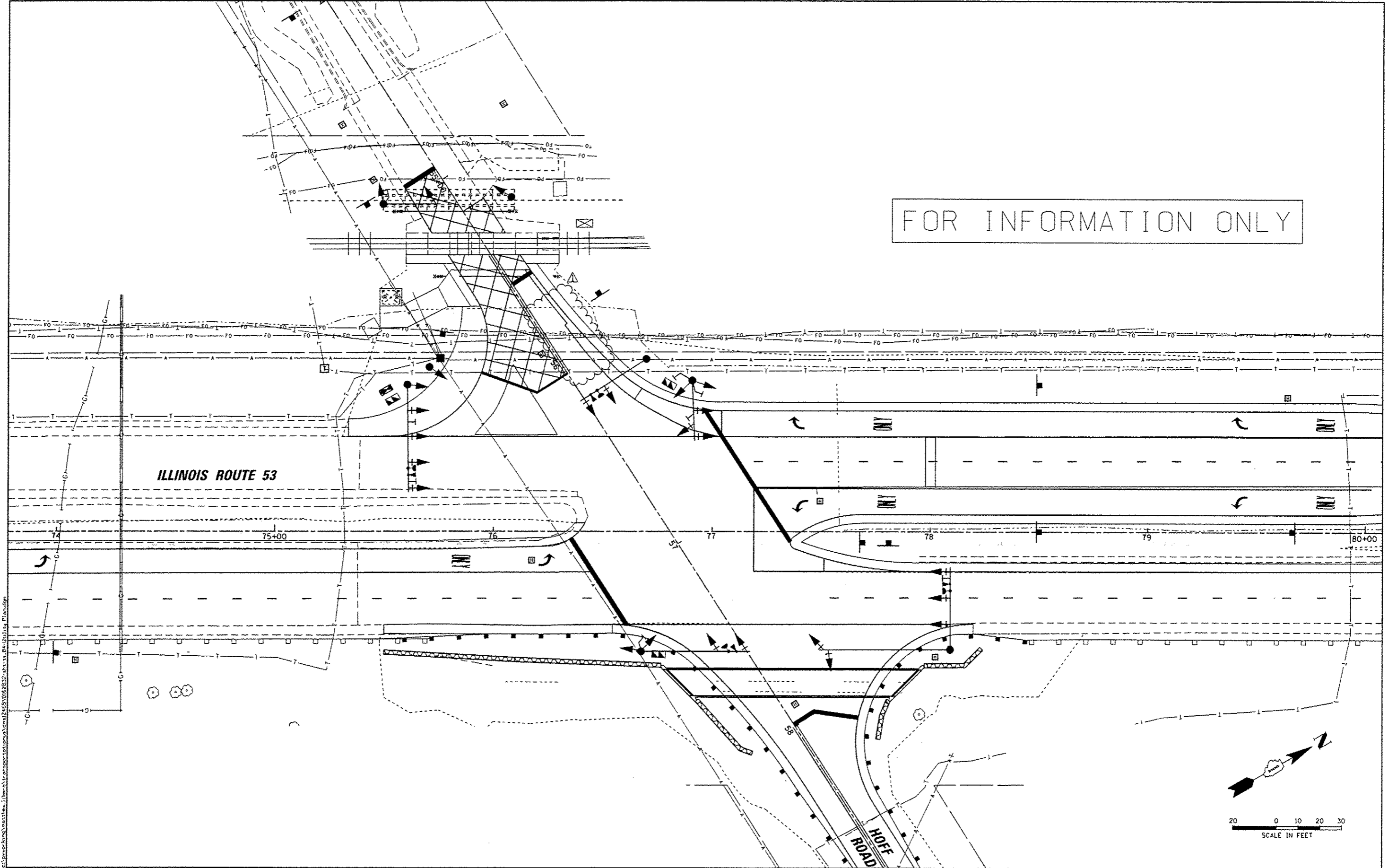
AECOM	USER NAME: matthew.libera	DESIGNED: MJL	REVISED: 05/10/2016
	DESIGNED: MJL	REVISED: -	
	CHECKED: ZCJ	REVISED: -	
	DATE: 03/21/2016	REVISED: -	

STATE OF ILLINOIS
DEPARTMENT OF TRANSPORTATION

TRAFFIC SIGNAL CABLE PLAN		SCALE: NTS	SHEET 2 OF 9 SHEETS	STA. TO STA.
IL ROUTE 53 AND HOFF ROAD				

F.A.P. RTE. 846	SECTION DIHSRR2016-01	COUNTY WILL	TOTAL SHEETS 146	SHEET NO. 70
CONTRACT NO. 62832			ILLINOIS FED. AID PROJECT	

FOR INFORMATION ONLY



FILE NAME: c:\projects\highway\illinois\transportation\utility\2455\01623232-utility.plt



USER NAME = matthew.libero	DESIGNED - MJL	REVISED - 05/10/2016
PLLOT SCALE = 48,000 ft / in.	DRAWN - MJL	REVISED -
PLLOT DATE = 5/18/2016	CHECKED - ZGJ	REVISED -
	DATE - 03/21/2016	REVISED -

STATE OF ILLINOIS
DEPARTMENT OF TRANSPORTATION

UTILITY PLAN
IL ROUTE 53 AND HOFF ROAD
SCALE: 1"=20' SHEET 4 OF 9 SHEETS STA. TO STA.

F.A.P. RTE.	SECTION	COUNTY	TOTAL SHEETS	SHEET NO.
846	01HSRR2016-01	WILL	146	72
CONTRACT NO. 62B32				
ILLINOIS FED. AID PROJECT				

SEQUENCE OF OPERATION

MOVEMENT																			FLASH																	
	1 + 5						1 + 6			2 + 5			2 + 6							3			4													
PHASE																																				
INTERVAL	1	2A	2B	3A	3B	4A	4B	5	6A	6B	7	8A	8B	9	10A	10B	11A	11B	12A	12B	13A	13B	14	15A	15B	16	17A	17B	17C	17D	18A	18B	18C	18D		
CHANGE TO	1 + 6		2 + 5			2 + 6			2 + 6			2 + 6			1 + 5, 3			1 + 6			2 + 5			4			4, 1 + 5, 2 + 5, 1 + 6, 2 + 6			1 + 5, 2 + 5			1 + 6, 2 + 6			
ILLINOIS ROUTE 53 FAR LEFT AND LEFT MAST ARM SIGNALS S/B	G	G	G	Y	R	Y	R	G	Y	R	R	R	R	R	R	R	R	R	R	R	R	R	R	R	R	R	R	R	R	R	R	R	R	R	R	
ILLINOIS ROUTE 53 CENTER LEFT AND CENTER RIGHT MAST ARM AND LEFT NEAR REVERSE MAST ARM SIGNALS S/B	R	R	R	R	R	R	R	G	G	G	R	R	R	G	Y	R	G	G	Y	R	Y	R	R	R	R	R	R	R	R	R	R	R	R	R		
ILLINOIS ROUTE 53 RIGHT MAST ARM, FAR RIGHT, RIGHT NEAR REVERSE MAST ARM, AND NEAR RIGHT SIGNALS S/B	R	R	R	R	R	R	R	G	G	G	R	R	R	G	Y	R	G	G	Y	R	G	G	R	R	R	G	G	G	Y	R	G	G	G	R		
ILLINOIS ROUTE 53 FAR LEFT, FAR LEFT REVERSE MAST ARM, AND LEFT MAST ARM SIGNALS N/B	G	Y	R	G	G	Y	R	R	R	R	G	Y	R	R	R	R	R	R	R	R	R	R	R	R	R	R	R	R	R	R	R	R	R	R		
ILLINOIS ROUTE 53 CENTER AND RIGHT MAST ARM AND NEAR RIGHT SIGNALS N/B	R	R	R	R	R	R	R	R	R	R	G	G	G	G	Y	R	Y	R	G	G	Y	R	R	R	R	R	R	R	R	R	R	R	R	R		
HOFF ROAD FAR LEFT AND LEFT MAST ARM SIGNALS W/B	R	R	R	R	R	R	R	R	R	R	R	R	R	R	R	R	R	R	R	R	R	R	R	R	G	Y	R	R	R	R	R	R	R	R	R	R
HOFF ROAD RIGHT MAST ARM AND NEAR RIGHT SIGNALS W/B	R	R	R	R	R	R	R	R	R	R	R	R	R	R	R	R	R	R	R	R	R	R	R	R	C	Y	R	R	R	R	R	R	R	R	R	R
HOFF ROAD (PRE-SIGNAL) ALL SIGNALS E/B	R	R	R	R	R	R	R	R	R	R	R	R	R	R	R	R	R	R	R	R	R	R	R	R	R	R	G	Y	R	R	Y	R	R	R		
HOFF ROAD (EAST OF TRACKS) FAR LEFT AND LEFT MAST ARM SIGNALS E/B	R	R	R	R	R	R	R	R	R	R	R	R	R	R	R	R	R	R	R	R	R	R	R	R	R	R	G	G	G	Y	R	G	G	Y	R	
HOFF ROAD (EAST OF TRACKS) RIGHT MAST ARM SIGNAL E/B	R	R	R	R	R	R	R	R	R	R	R	R	R	R	R	R	R	R	R	R	R	R	R	R	R	R	G	G	G	Y	R	G	G	Y	R	

PHASES 2 + 6 SHALL BE PLACED ON RECALL.

FILE NAME: c:\pwworking\msthe\libar\transportation\msthe\12465\016232-411-11-15-Sequence of Operation.dgn

EMERGENCY VEHICLE PREEMPTION SEQUENCE OF OPERATION

CHANGE FROM NORMAL SEQUENCE OF OPERATION INTERVAL NUMBER	1		1		1		5		5		7		7		9		9		9		14		14		16		16		16		PREEMPTOR 3	PREEMPTOR 4	PREEMPTOR 5	PREEMPTOR 6	CLEAR TO NORMAL SEQUENCE
	1A	1B	1C	1D	1E	1F	1G	1H	1J	1K	1L	1M	1N	1P	1Q	1R	1S	1T	1U	1V	1W	1X	1Y	1Z	1AA	1BB	1CC	1DD	1EE	1FF	1GG	2	3	4	
EMERGENCY VEH. PREEMPTION SEQUENCE OF OPERATION INTERVAL NUMBER	1A	1B	1C	1D	1E	1F	1G	1H	1J	1K	1L	1M	1N	1P	1Q	1R	1S	1T	1U	1V	1W	1X	1Y	1Z	1AA	1BB	1CC	1DD	1EE	1FF	1GG	2	3	4	5
CHANGE TO EMERGENCY VEH. PREEMPTION SEQUENCE OF OPERATION INTERVAL NO.	1B	2	1D	3 OR 5	1F	4	1H	2, 3 OR 5	4	2	1M	3, 4 OR 5	1P	2	1R	3 OR 5	1T	4	1V	2, 3 OR 4	5	1Y	1Z	1AA	2 OR 5	1CC	3	1EE	1FF	1GG	4				
ILLINOIS ROUTE 53 FAR LEFT AND LEFT MAST ARM SIGNALS S/B	Y	R	Y	R	G	G	Y	R	G	R	R	R	R	R	R	R	R	R	R	R	R	R	R	R	R	R	R	R	R	R	R	R	R	R	R
ILLINOIS ROUTE 53 CENTER LEFT AND CENTER RIGHT MAST ARM AND LEFT NEAR REVERSE MAST ARM SIGNALS S/B	R	R	R	R	R	R	Y	R	G	R	R	R	Y	R	Y	R	G	G	R	R	R	R	R	R	R	R	R	R	R	R	R	R	R	R	R
ILLINOIS ROUTE 53 RIGHT MAST ARM, FAR RIGHT, RIGHT NEAR REVERSE MAST ARM, AND NEAR RIGHT SIGNALS S/B	R	R	R	R	R	R	Y	R	G	R	R	R	Y	R	Y	R	G	G	R	R	R	G	G	Y	R	Y	R	G	G	G	G	R	R	G	R
ILLINOIS ROUTE 53 FAR LEFT, FAR LEFT REVERSE MAST ARM, AND LEFT MAST ARM SIGNALS N/B	G	G	Y	R	Y	R	R	R	R	G	Y	R	R	R	R	R	R	R	R	R	R	R	R	R	R	R	R	R	R	R	R	R	R	R	R
ILLINOIS ROUTE 53 CENTER AND RIGHT MAST ARM AND NEAR RIGHT SIGNALS N/B	R	R	R	R	R	R	R	R	R	G	Y	R	G	G	Y	R	Y	R	R	R	R	R	R	R	R	R	R	R	R	R	R	R	R	R	R
HOFF ROAD FAR LEFT AND LEFT MAST ARM SIGNALS W/B	R	R	R	R	R	R	R	R	R	R	R	R	R	R	R	R	R	R	Y	R	G	R	R	R	R	R	R	R	R	R	R	R	R	R	R
HOFF ROAD RIGHT MAST ARM AND NEAR RIGHT SIGNALS W/B	R	R	R	R	R	R	R	R	R	R	R	R	R	R	R	R	R	R	Y	R	G	R	R	R	R	R	R	R	R	R	R	R	R	R	R
HOFF ROAD (PRE-SIGNAL) ALL SIGNALS E/B	R	R	R	R	R	R	R	R	R	R	R	R	R	R	R	R	R	R	R	R	R	Y	R	R	R	G	G	Y	R	R	R	R	R	R	R
HOFF ROAD (EAST OF TRACKS) FAR LEFT AND LEFT MAST ARM SIGNALS E/B	R	R	R	R	R	R	R	R	R	R	R	R	R	R	R	R	R	R	R	R	R	G	G	Y	R	G	G	G	G	Y	R	R	R	R	R
HOFF ROAD (EAST OF TRACKS) RIGHT MAST ARM SIGNAL E/B	R	R	R	R	R	R	R	R	R	R	R	R	R	R	R	R	R	R	R	R	R	G	G	Y	R	G	G	G	G	Y	R	R	R	R	R

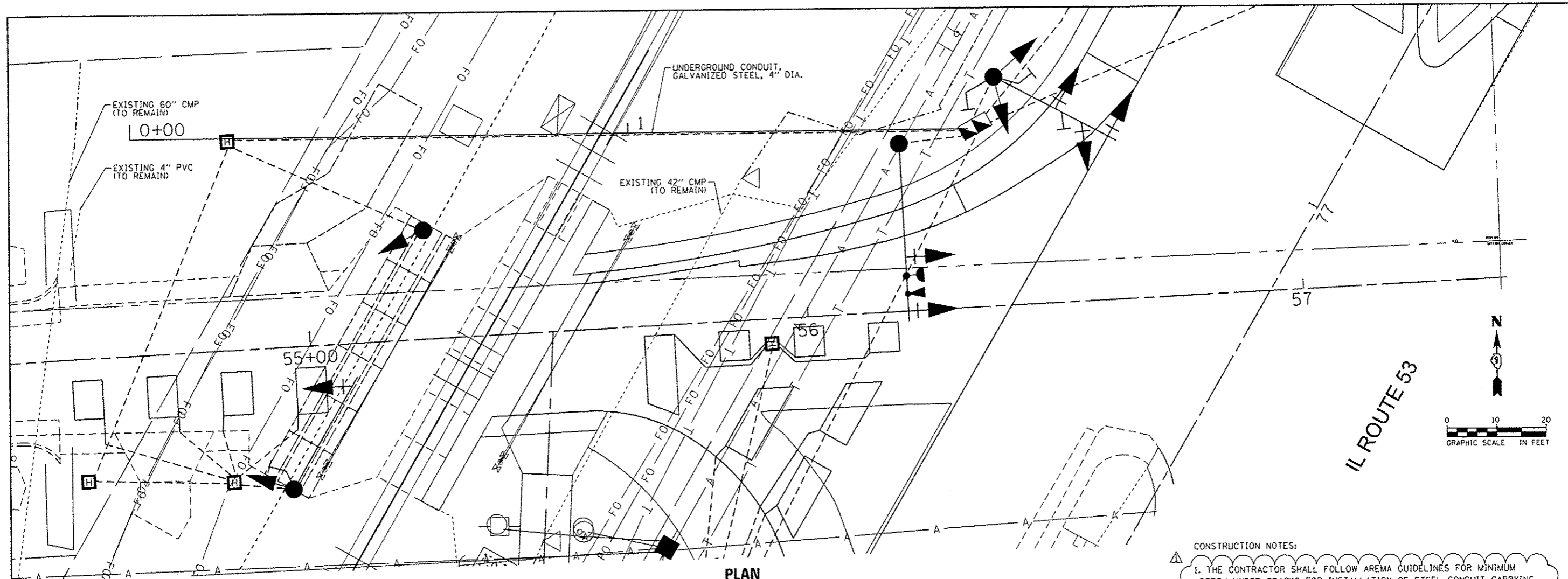
◇ EMERGENCY VEHICLE PREEMPTION SEQUENCE SHALL PROVIDE THE PROPER CLEARANCE INTERVAL TO RESUME THE NORMAL SEQUENCE OF OPERATION OR PROPER CLEARANCE INTERVAL TO DISPLAY A DIFFERENT EMERGENCY VEHICLE INTERVAL AFTER EMERGENCY VEHICLE INTERVAL 2, 3, 4, OR 5 IS TERMINATED.

RAILROAD PREEMPTION SEQUENCE OF OPERATION

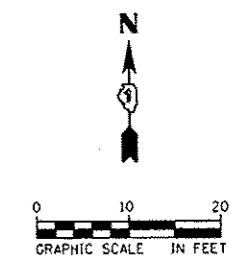
																				PREEMPTOR NUMBER 3	PREEMPTOR NUMBER 4	PREEMPTOR NUMBER 5	PREEMPTOR NUMBER 6	PREEMPTOR NUMBER 2											
	1	5	7	9	14	16	2	3	4	5	1A	1B	1C	1D	1E	1F	1G	1H	1J	1K	1L	1M	1N	1P		1Q	1R	1S	1T	1U	1V	2	3	4	5
CHANGE FROM NORMAL SEQUENCE OF OPERATION INTERVAL NUMBER																																			
CHANGE FROM EMERGENCY VEHICLE PREEMPTION SEQUENCE OF OPERATION INTERVAL NUMBER																																			
RAILROAD PREEMPTION SEQUENCE OF OPERATION INTERVAL NUMBER	1A	1B	1C	1D	1E	1F	1G	1H	1J	1K	1L	1M	1N	1P	1Q	1R	1S	1T	1U	1V	2	3	4	5											
CHANGE TO RAILROAD PREEMPTION SEQUENCE OF OPERATION INTERVAL NUMBER	1B	2	1D	2	1F	2	1H	2	1K	2	1M	2	1P	2	1R	2	1T	2	1V	2	3	4	5												
ILLINOIS ROUTE 53 FAR LEFT AND LEFT MAST ARM SIGNALS S/B	Y	R	Y	R	R	R	R	R	R	R	R	R	R	R	R	R	Y	R	R	R	R	R	R	R											Δ
ILLINOIS ROUTE 53 CENTER LEFT AND CENTER RIGHT MAST ARM AND LEFT NEAR REVERSE MAST ARM SIGNALS S/B	R	R	Y	R	R	R	Y	R	R	R	R	R	R	R	R	R	Y	R	R	R	R	R	R	G											Δ
ILLINOIS ROUTE 53 RIGHT MAST ARM, FAR RIGHT, RIGHT NEAR REVERSE MAST ARM, AND NEAR RIGHT SIGNALS S/B	R	R	Y	R	R	R	Y	R	R	R	Y	R	R	R	R	Y	R	R	R	R	R	R	R											Δ	
ILLINOIS ROUTE 53 FAR LEFT, FAR LEFT REVERSE MAST ARM, AND LEFT MAST ARM SIGNALS N/B	Y	R	R	R	Y	R	R	R	R	R	R	R	Y	R	R	R	R	R	R	R	R	R	R											Δ	
ILLINOIS ROUTE 53 CENTER AND RIGHT MAST ARM AND NEAR RIGHT SIGNALS N/B	R	R	R	R	Y	R	Y	R	R	R	R	R	Y	R	R	R	R	R	R	R	R	R	G											Δ	
HOFF ROAD FAR LEFT AND LEFT MAST ARM SIGNALS W/B	R	R	R	R	R	R	R	R	Y	R	R	R	R	R	R	R	R	R	Y	R	R	R	R	R											Δ
HOFF ROAD RIGHT MAST ARM AND NEAR RIGHT SIGNALS W/B	R	R	R	R	R	R	R	R	Y	R	R	R	R	R	R	R	R	R	Y	R	R	R	R	R											Δ
HOFF ROAD (PRE-SIGNAL) ALL SIGNALS E/B	R	R	R	R	R	R	R	R	R	R	Y	R	R	R	Y	R	R	R	R	R	R	R	R											Δ	
HOFF ROAD (EAST OF TRACKS) FAR LEFT AND LEFT MAST ARM SIGNALS E/B	R	R	R	R	R	R	R	R	R	R	G	G	R	R	G	G	R	R	R	R	G	Y	R	R											Δ
HOFF ROAD (EAST OF TRACKS) RIGHT MAST ARM SIGNAL E/B	R	R	R	R	R	R	R	R	R	R	G	G	R	R	G	G	R	R	R	R	G	Y	R	R											Δ

HOLD

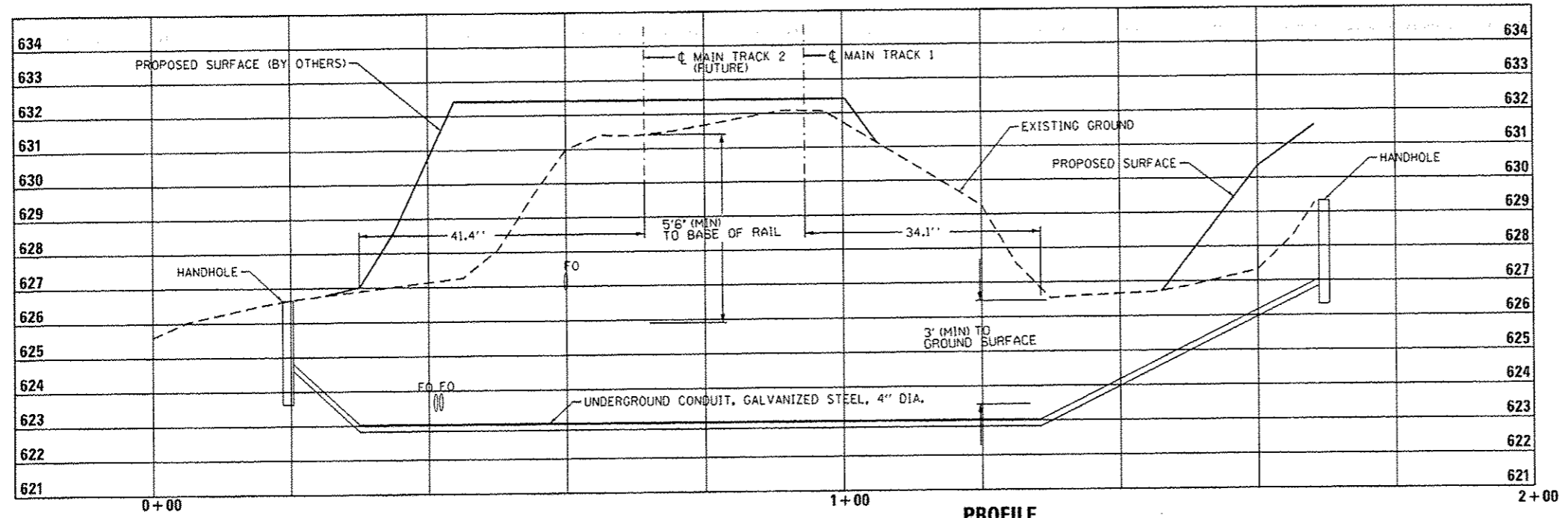
Δ RAILROAD PREEMPTION SEQUENCE SHALL PROVIDE THE PROPER CLEARANCE INTERVAL TO RESUME THE NORMAL SEQUENCE OF OPERATION OR PROPER CLEARANCE INTERVAL TO DISPLAY AN EMERGENCY VEHICLE INTERVAL (IF APPLICABLE) AFTER RAILROAD INTERVAL 5 IS TERMINATED.



PLAN
1" = 10'



- CONSTRUCTION NOTES:**
1. THE CONTRACTOR SHALL FOLLOW AREMA GUIDELINES FOR MINIMUM DEPTH UNDER TRACKS FOR INSTALLATION OF STEEL CONDUIT CARRYING ELECTRICAL CABLES. AT THE INSTALLED DEPTH OF STEEL CONDUIT UNDER TRACKS, THE CONTRACTOR SHALL EXTEND STEEL CONDUIT A MINIMUM OF 30 FEET OUT FROM THE CENTERLINE OF TRACK, MEASURED AT RIGHT ANGLES. THE CONTRACTOR SHALL ATTEMPT TO INSTALL STEEL CONDUIT AT OR CLOSE TO THE MINIMUM DEPTH OF 5 FEET, 6 INCHES, FROM BASE OF RAIL TO TOP OF STEEL CONDUIT.
 2. REFER TO THE UNION PACIFIC GENERAL NOTES ON THE CONTRACT GENERAL NOTES SHEET FOR INFORMATION REGARDING WORK ON AND NEAR UNION PACIFIC RAILROAD RIGHT OF WAY.
 3. RAILROAD COORDINATION SHALL BE IN ACCORDANCE WITH THE SPECIAL PROVISIONS.
 4. EXISTING UTILITIES ARE SHOWN ON THE PLANS ACCORDING TO INFORMATION OBTAINED FROM THE LOCAL AGENCIES, OWNERS, AND FIELD SURVEYS. THE ACCURACY AND COMPLETENESS OF SAID INFORMATION IS NOT GUARANTEED. IT SHALL BE THE CONTRACTOR'S RESPONSIBILITY TO VERIFY THE EXISTENCE, NATURE AND EXACT LOCATIONS OF ALL UTILITY LINES AND APPURTENANCES WITHIN THE LIMITS OF THE IMPROVEMENTS.
 5. REFER TO THE UNION PACIFIC GENERAL NOTES ON THE CONTRACT GENERAL NOTES SHEET FOR CONTACT INFORMATION REGARDING THE LOCATION OF FIBER OPTIC CABLES WITHIN THE UNION PACIFIC RIGHT OF WAY.
 6. RESTORATION OF DISTURBED AREAS SHALL BE INCLUDED IN THE PAY ITEM UNDERGROUND CONDUIT, GALVANIZED STEEL, (SIZE SPECIFIED). DISTURBED AREAS SHALL BE RETURNED TO EXISTING GRADE. ALL ROADWAY SURFACES SUCH AS SHOULDERS, MEDIANS, SIDEWALKS, PAVEMENT, ETC. SHALL BE REPLACED IN KIND. ALL DAMAGE TO MOWED LAWNS SHALL BE REPLACED WITH AN APPROVED SOD, AND ALL DAMAGE TO UNMOWED FIELDS SHALL BE SEEDED IN ACCORDANCE WITH STANDARD SPECIFICATIONS 252 AND 250, RESPECTIVELY.



PROFILE

FILE NAME: c:\projects\unp\matthew.libere\traverse\station\dm1245910162016\0162016-01.ctb; 11/11/2016 10:45:12 AM



USER NAME = matthew.libere	DESIGNED - MTL	REVISED - 05/10/2016
DRAWN - MTL	CHECKED - MJL	REVISOR -
DATE - 03/21/2016	REVISOR -	

**STATE OF ILLINOIS
DEPARTMENT OF TRANSPORTATION**

CONDUIT INSTALLATION UNDER RAILROAD TRACKS DETAIL

SCALE: 1" = 10' SHEET 1 OF 1 SHEETS STA. TO STA.

F.A.P. RTE.	SECTION	COUNTY	TOTAL SHEETS	SHEET NO.
846	D145RR2016-01	WILL	146	86
CONTRACT NO. 62B32				
[ILLINOIS] FED. AID PROJECT				