

STATE OF ILLINOIS
DEPARTMENT OF TRANSPORTATION

F.A.U. RTE.	SECTION	COUNTY	TOTAL SHEETS	SHEET NO.
2585	3346-T	COOK	10	1
		ILLINOIS	CONTRACT NO. 62B50	

FOR INDEX OF SHEETS, SEE SHEET NO. 2

THE IMPROVEMENT IS LOCATED IN THE VILLAGES OF ROLLING MEADOWS AND SCHAUMBURG

TRAFFIC DATA

MEACHAM RD.

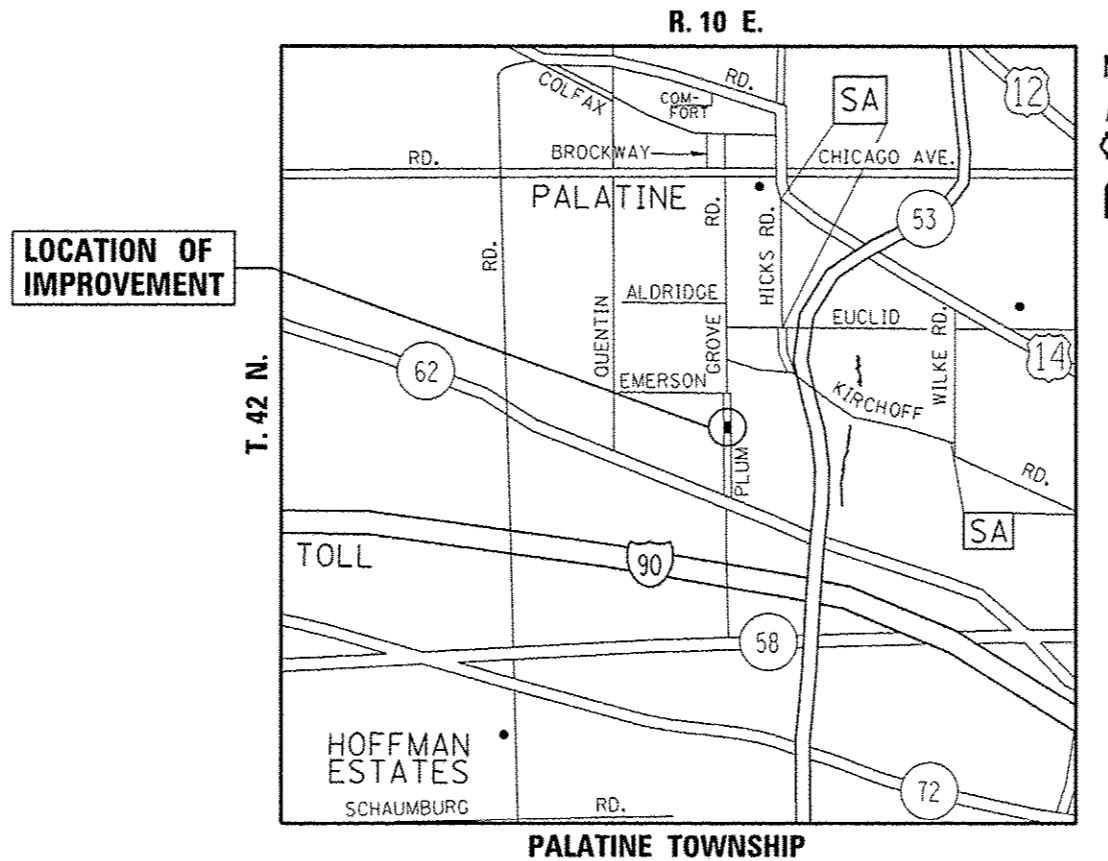
ADT (2014) = 11,950

POSTED SPEED LIMIT = 35 MPH

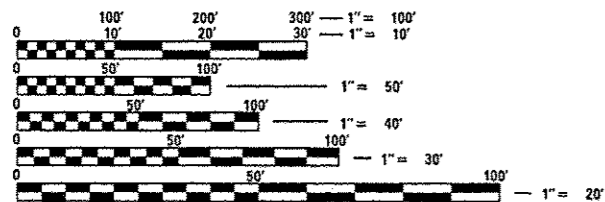
**PROPOSED
HIGHWAY PLANS**

F.A.U. ROUTE 2585: MEACHAM RD.
NEAR SALT CREEK
SECTION: 3346-T
DRAINAGE
COOK COUNTY

C-91-050-16



LOCATION OF IMPROVEMENT



FULL SIZE PLANS HAVE BEEN PREPARED USING STANDARD ENGINEERING SCALES. REDUCED SIZED PLANS WILL NOT CONFORM TO STANDARD SCALES. IN MAKING MEASUREMENTS ON REDUCED PLANS, THE ABOVE SCALES MAY BE USED.

J.U.L.I.E.
JOINT UTILITY LOCATION INFORMATION FOR EXCAVATION
1-800-892-0123
OR 811

PROJECT ENGINEER J. ALAIN MIDY (847) 221-3056
PROJECT MANAGER ISSAM RAYYAN (847) 705-4178

GROSS & NET LENGTH = 500.00 FT. = 0.095 MILE

CONTRACT NO. 62B50

STATE OF ILLINOIS
DEPARTMENT OF TRANSPORTATION

SUBMITTED *March 21 2016*

John Fentman
REGIONAL ENGINEER

Maureen M. Addison
ENGINEER OF DESIGN AND ENVIRONMENT

Maureen M. Addison
DIRECTOR OF PROGRAM DEVELOPMENT

PRINTED BY THE AUTHORITY
OF THE STATE OF ILLINOIS

SUMMARY OF QUANTITIES			URBAN 100% STATE TOTAL QUANTITIES					CONSTRUCTION TYPE CODE 0044				
CODE NO	ITEM	UNIT	TOTAL QUANTITIES	0044								
20101000	TEMPORARY FENCE	FOOT	100	100								
20101100	TREE TRUNK PROTECTION	EACH	3	3								
20101200	TREE ROOT PRUNING	EACH	3	3								
20101700	SUPPLEMENTAL WATERING	UNIT	1	1								
25000210	SEEDING, CLASS 2A	ACRE	0.01	0.01								
25100630	EROSION CONTROL BLANKET	SQ YD	56	56								
550A0360	STORM SEWERS, CLASS A, TYPE 2 15"	FOOT	175	175								
55100700	STORM SEWER REMOVAL 15"	FOOT	55	55								
60200205	CATCH BASINS, TYPE A, 4' DIAMETER, TYPE 1 FRAME, CLOSED LID	EACH	1	1								
60207000	CATCH BASINS, TYPE A, TYPE B GRATE	EACH	1	1								
60500050	REMOVING CATCH BASINS	EACH	1	1								
* 66900200	NON-SPECIAL WASTE DISPOSAL	CU YD	50	50								
* 66900450	SPECIAL WASTE PLANS AND REPORTS	LSUM	1	1								
* 66900530	SOIL DISPOSAL ANALYSIS	EACH	1	1								
67000400	ENGINEER'S FIELD OFFICE, TYPE A	CAL MO	3	3								
67100100	MOBILIZATION	LSUM	1	1								

SUMMARY OF QUANTITIES			URBAN 100% STATE TOTAL QUANTITIES					CONSTRUCTION TYPE CODE 0044				
CODE NO	ITEM	UNIT	TOTAL QUANTITIES	0044								
70102620	TRAFFIC CONTROL AND PROTECTION, STANDARD 701501	LSUM	1	1								
Z0018500	DRAINAGE STRUCTURES TO BE CLEANED	EACH	2	2								
Z0030850	TEMPORARY INFORMATION SIGNING	SO FT	51.4	51.4								
3												

*Specialty Items

FILE NAME :	USER NAME : jpr2010r3110	DESIGNED -	REVISED -
PROJECT : 00506-CAD001-Design-00506-001	OFFICE : District 1 Projects	CHECKED -	REVISED -
PLDT SCALE : 100,0000 / 1" = 100'	DATE : 3/31/2006	CHECKED -	REVISED -
PLDT DATE : 3/31/2006		DATE -	REVISED -

STATE OF ILLINOIS
DEPARTMENT OF TRANSPORTATION

SUMMARY OF QUANTITIES				
SCALE:	SHEET NO.	OF	SHEETS	STA. TO STA.

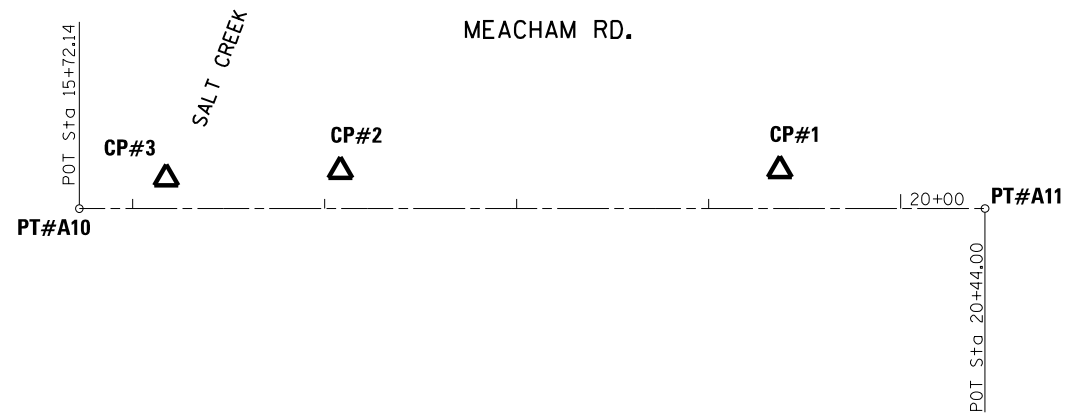
F.A.U. RTE.	SECTION	COUNTY	TOTAL SHEETS	SHEET NO.
2585	3346-T	COOK	10	3
FED. ROAD DIST. NO. 1 ILLINOIS FED. AID PROJECT				
CONTRACT NO. 62850				

MEACHAM RD.

DRAINAGE STRUCTURES TABLE										
NO.	STATION	OFFSET	STRUCTURE TYPE		DIA.	FRAME	TOP OF GRATE	INVERT(N)	INVERT(S)	INVERT(W)
			CB	INL						
1	18+41	29' LT	TYP. A		4'	TY. 1, CL	724.92	719.85	719.75	
2	18+94	24' LT	TYP. A		4'	TY. 8 GR	724.90	720.85	720.75	

STORM SEWER TABLE									
NO.	DESCRIPTION	TYPE	DIA.	LIN. FT.	TB	INVERT	INVERT	INVERT	INVERT
					CU.YD.	(N)	(S)	(E)	(W)
1	PROP. STORM SEWER, CLASS A	2	15"	48		720.75	719.85		
2	PROP. STORM SEWER, CLASS A	2	15"	120		719.75	718.36		

FILE NAME =	USER NAME = pyrzenowski	DESIGNED -	REVISED -	STATE OF ILLINOIS DEPARTMENT OF TRANSPORTATION	SCHEDULE OF QUANTITIES				F.A.U. RTE.	SECTION	COUNTY	TOTAL SHEETS	SHEET NO.
p:\11084EBIDINTEG.illinois.gov\PIWIDOT\Documents\IDOT Offices\District 1\Projects\DI05016\Design\DI05016-sht-plan.dgn		CHECKED -	REVISED -						2585	3346-T	COOK	10	4
Default	PLOT SCALE = 100.0000' / in.	DATE -	REVISED -		SCALE: SHEET OF SHEETS STA. TO STA.				CONTRACT NO. 62B50				
	PLOT DATE = 3/30/2016	DATE -	REVISED -		ILLINOIS FED. AID PROJECT								

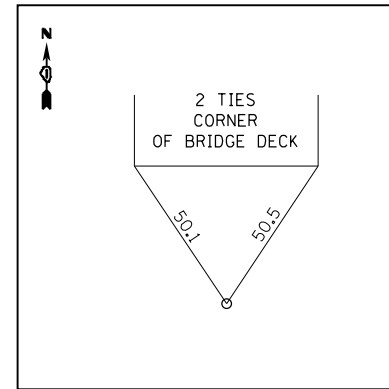


MEACHAM ROAD	PT# A10	N 2066799.1199	E 1078557.2566	STA. 15+72.14
	PT# A11	N 2066802.8525	E 1078954.9108	STA. 20+44.00

BENCHMARKS

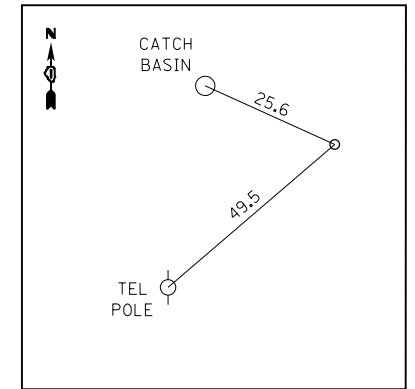
WESTERLY BOLT OF FIRE HYDRANT IN N.W. CORNER OF MEACHAM ROAD & WOODCLIFF CT. - ELEV. 732.23

CHISELED SQUARE IN WINGWALL IN N.W. QUADRANT OF BRIDGE OVER SALT CREEK - ELEV. 725.03



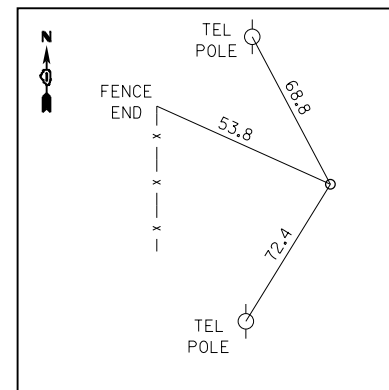
PT #A10

MAG NAIL \odot
 STA. 15+72.14
 N 1969477.5311
 E 1062831.8234
 ELEV. 726.1285



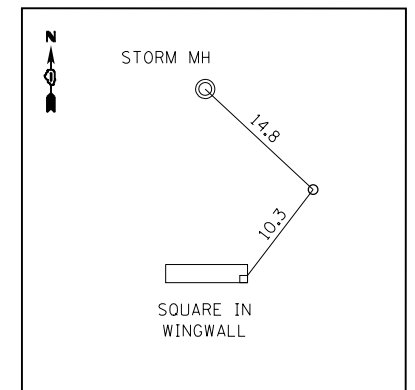
PT #A11

MAG NAIL \odot
 STA. 20+44.0
 N 1969949.3911
 E 1062831.8663
 ELEV. 729.5386



CP #1

MAG NAIL IN W. SHOULDER MEACHAM
 N 1969842.4655
 E 1062811.7954
 ELEV. 726.6462



CP #2

"X" IN CONC APPROACH PANEL OF BRIDGE W. SIDE MEACHAM
 N 1969613.6010
 E 1062812.1634
 ELEV. 724.8015

CP #3

N 1969522.8322
 E 1062816.0759
 ELEV. 725.3526

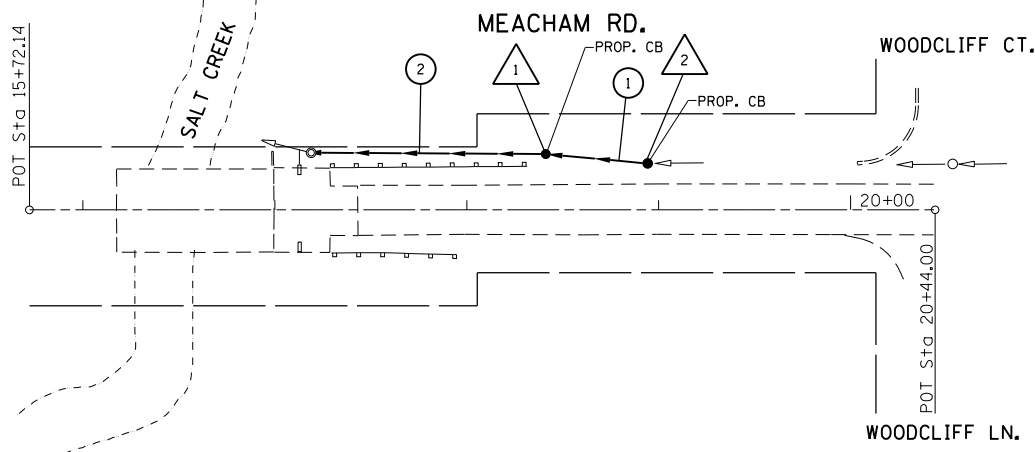
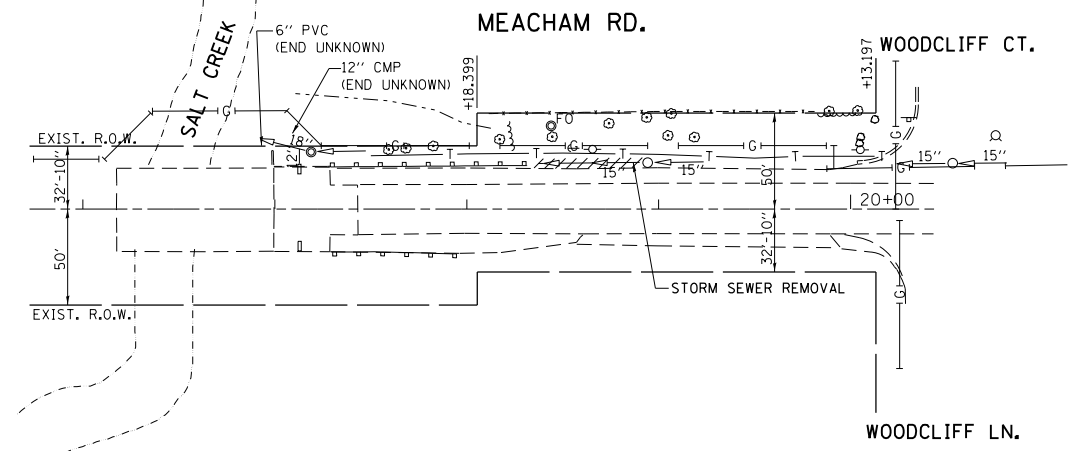
FILE NAME =	USER NAME = pyrzenowskirb	DESIGNED -	REVISED -
pw:\IL\084EBIDINTEG.illinois.gov\PIWIDOT\Documents\IDOT Offices\District 1\Projects\DI05016\Design\DI05016-shr-plan.dgn		REVISED -	
Default	PLOT SCALE = 100.0000' / in.	CHECKED -	REVISED -
	PLOT DATE = 3/30/2016	DATE -	REVISED -

**STATE OF ILLINOIS
 DEPARTMENT OF TRANSPORTATION**

**ALIGNMENT, TIES AND BENCHMARKS
 MEACHAM ROAD NEAR SALT CREEK**

SCALE: 1"=50' SHEET OF SHEETS STA. TO STA.

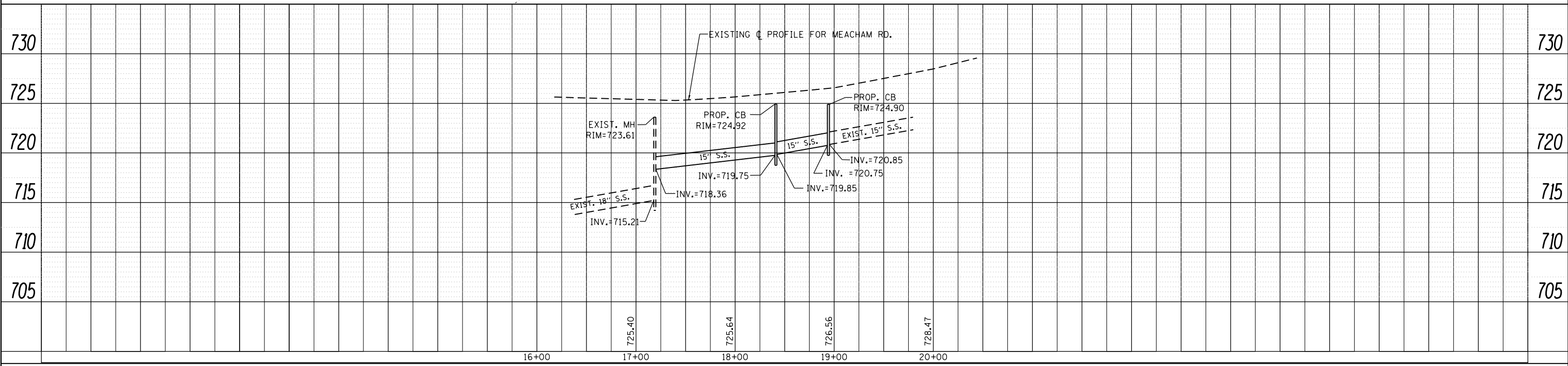
F.A.U. RT.	SECTION	COUNTY	TOTAL SHEETS	SHEET NO.
2585	3346-T	COOK	10	5
				CONTRACT NO. 62B50
ILLINOIS FED. AID PROJECT				



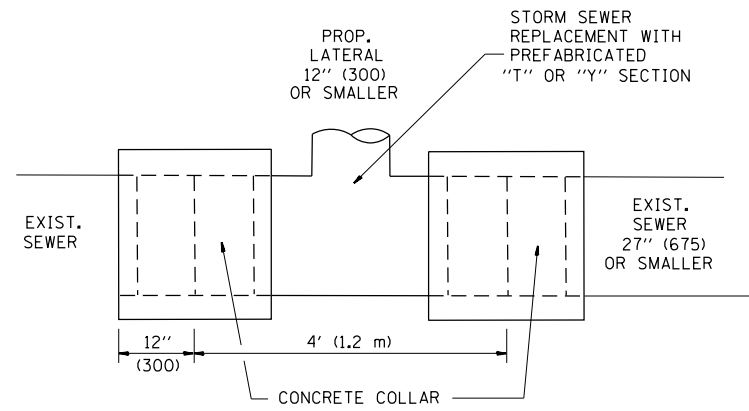
1	PROP. CATCH BASIN, TYPE A, 4' DIA., TYPE 1, CLOSED LID STA. 18+41, 29' LT T.G. 724.92 INV. 719.85 N INV. 719.75 S	2	PROP. CATCH BASIN, TYPE A, TYPE 8 GRATE STA. 18+94, 24' LT T.G. 724.90 INV. 720.85 N INV. 720.75 S
---	--	---	---

1	PROP. S.S., CLASS A, TYPE 2, 15", 48' INV. 719.85 S INV. 720.75 N	2	PROP. S.S., CLASS A, TYPE 2, 15", 120' INV. 718.36 S INV. 719.75 N
---	--	---	---

PROFILE	SUBMITTED	DATE
NOTE BOOK	GRADES CHECKED	
NO.	STRUCTURE NOTATIONS CHKD	

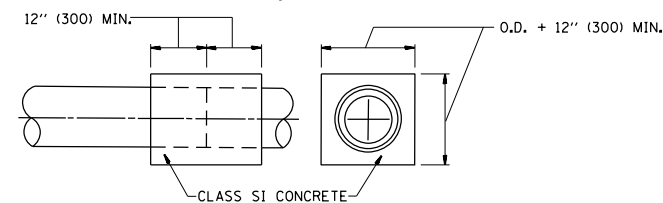
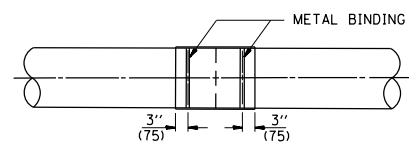
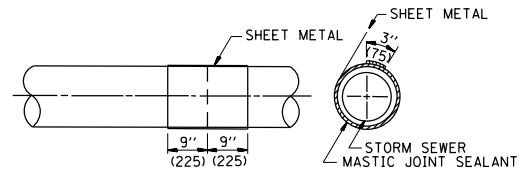
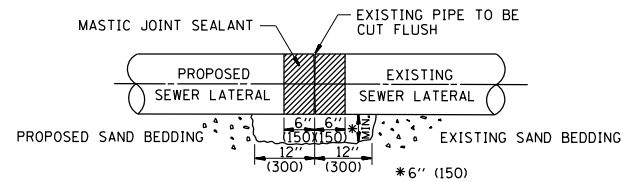


FILE NAME =	USER NAME = pyznowskirb	DESIGNED -	REVISED -	STATE OF ILLINOIS DEPARTMENT OF TRANSPORTATION	DRAINAGE PLAN & PROFILE MEACHAM ROAD NEAR SALT CREEK	F.A.U. RTÉ.	SECTION	COUNTY	TOTAL SHEETS	SHEET NO.
pwt:\IL084EBIDINTEG\Illinois.gov\PIWIDOT\Documents\IDOT Offices\District 1\Projects\DI05016\Design\DI05016-shr-plan.dgn		CHECKED -	REVISED -			2585	3346-T	COOK	10	6
PLOT SCALE = 100.0000' / in.		DATE -	REVISED -			CONTRACT NO. 62B50				
Default						ILLINOIS FED. AID PROJECT				
	PLOT DATE = 3/30/2016			SCALE: 1"=50'	SHEET OF SHEETS	STA.	TO STA.			



DETAIL "A"

LATERAL CONNECTION TO EXISTING SEWER OF 27" (675) OR SMALLER



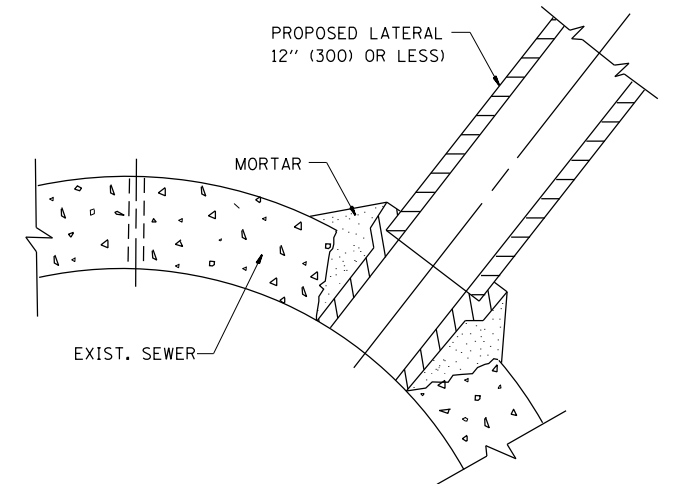
DETAIL "B"

CLASS SI CONCRETE COLLAR

CONSTRUCTION SEQUENCE

1. CUT THE EXISTING END OF THE PIPE SO AS TO PRESENT A FLUSH BUTT JOINT. BRUSH AND CLEAN ALL PIPES.
2. APPLY THE MASTIC JOINT SEALANT TO THE FIRST 6" (150) OF EACH PIPE.
3. BUTT THE PIPES TOGETHER LEAVING A MINIMUM OF 12" x 6" (300 x 150) DEEP EXCAVATION UNDER AND AROUND EACH PIPE END.
4. CUT A PIECE OF SHEET METAL GAGE NO. 19 1.1 (0.0418) 18" (450) WIDE BY THE OUTSIDE CIRCUMFERENCE OF THE PIPE PLUS 3" (75) LONG.
5. WRAP THE SHEET METAL AROUND THE PIPES, 9" (225) ON EACH SIDE OF THE JOINT, STARTING AT THE TOP OF THE PIPE.
6. LAP THE SHEET METAL AT LEAST 3" (75) AT THE TOP OF THE PIPE AND PLACE THE MASTIC JOINT SEALANT BETWEEN THE LAP.
7. PLACE TWO METAL BANDS AROUND THE SHEET METAL AND TIGHTEN.
8. WIPE OFF ANY EXCESS MASTIC JOINT SEALANT THAT OOOZES OUT FROM BETWEEN THE SHEET METAL AND THE PIPES.
9. PLACE CLASS SI CONCRETE AROUND THE JOINT.

ALL DIMENSIONS ARE IN INCHES (MILLIMETERS) UNLESS OTHERWISE SHOWN.



DETAIL "C"

PROPOSED LATERAL CONNECTION TO EXISTING SEWER OF 30" (750) OR LARGER

NOTES

MATERIAL

MATERIAL USED FOR THE TEE OR WYE SECTION SHALL BE COMPATIBLE WITH THE EXISTING STORM SEWER OR THE PROPOSED STORM SEWER.

CONSTRUCTION METHODS

- I. THIS WORK SHALL BE CONSTRUCTED IN CONFORMANCE WITH THE APPLICABLE PORTIONS OF SECTION 550 OF THE STANDARD SPECIFICATIONS.
- II. CONNECTION TO AN EXISTING STORM SEWER SHALL BE BY EITHER OF THE FOLLOWING METHODS:
 - A) PROPOSED STORM SEWER CONNECTION TO EXISTING SEWER OF 27" (675) OR SMALLER SEE DETAIL "A" AND "B".
 - B) PROPOSED STORM SEWER CONNECTION TO EXISTING SEWER OF 30" (750) OR LARGER SEE DETAIL "C".

IF THE EXISTING SEWER PIPE IS CRACKED, BROKEN OR OTHERWISE DAMAGED BY THE CONTRACTOR IN MAKING THE CIRCULAR OPENING, THE CONTRACTOR SHALL REPLACE THAT SECTION OF PIPE WITH PIPE EQUAL AND SIMILAR IN ALL RESPECTS TO THE PIPE IN THE EXISTING SEWER, IN A CAREFUL WORKMANLIKE MANNER, WITHOUT EXTRA COMPENSATION.

GENERAL

CARE MUST BE TAKEN TO PREVENT DEBRIS FROM ENTERING THE SEWER. ALL DEBRIS WHICH ENTERS THE SEWER MUST BE REMOVED. THE SEWER MUST BE LEFT CLEAN AND UNOBSTRUCTED UPON COMPLETION OF THE CONTRACT.

CARE MUST BE TAKEN TO PREVENT ANY PART OF THE NEW PIPE CONNECTION FROM PROJECTING INTO THE EXISTING SEWER.

BASIS OF PAYMENT

TEE OR WYE CONNECTIONS SHALL BE PAID FOR AT THE CONTRACT UNIT PRICE EACH FOR STORM SEWER TEE OR WYE OF THE TYPE AND SIZE SPECIFIED IN THE PLANS. THIS PRICE SHALL INCLUDE ALL EXCAVATION OF THE TRENCH, REMOVAL OF THE EXISTING STORM SEWER, FURNISHING AND INSTALLING THE SPECIFIED TEE OR WYE SECTION, FURNISHING AND INSTALLING THE REQUIRED CONCRETE COLLAR, AND ALL OTHER MATERIAL NECESSARY TO COMPLETE THIS WORK AS SHOWN AND SPECIFIED.

REMOVAL AND REINSTALLATION OF EXISTING STORM SEWER ADJACENT TO THE PROPOSED TEE OR WYE SECTION, FOR THE PURPOSE OF FACILITATING THE INSTALLATION OF THE TEE OR WYE SECTION, WILL NOT BE PAID FOR SEPARATELY BUT SHALL BE INCLUDED IN THE UNIT PRICE BID FOR THE WORK.

TRENCH BACKFILL, EXCAVATION IN ROCK AND REMOVAL AND REPLACEMENT OF UNSUITABLE MATERIAL BELOW PLAN BEDDING GRADE WILL BE PAID FOR SEPARATELY.

CONCRETE COLLAR FOR CONNECTING A PROPOSED STORM SEWER TO AN EXISTING STORM SEWER WILL NOT BE PAID FOR SEPARATELY BUT SHALL BE INCLUDED IN THE COST OF THE PROPOSED STORM SEWER.

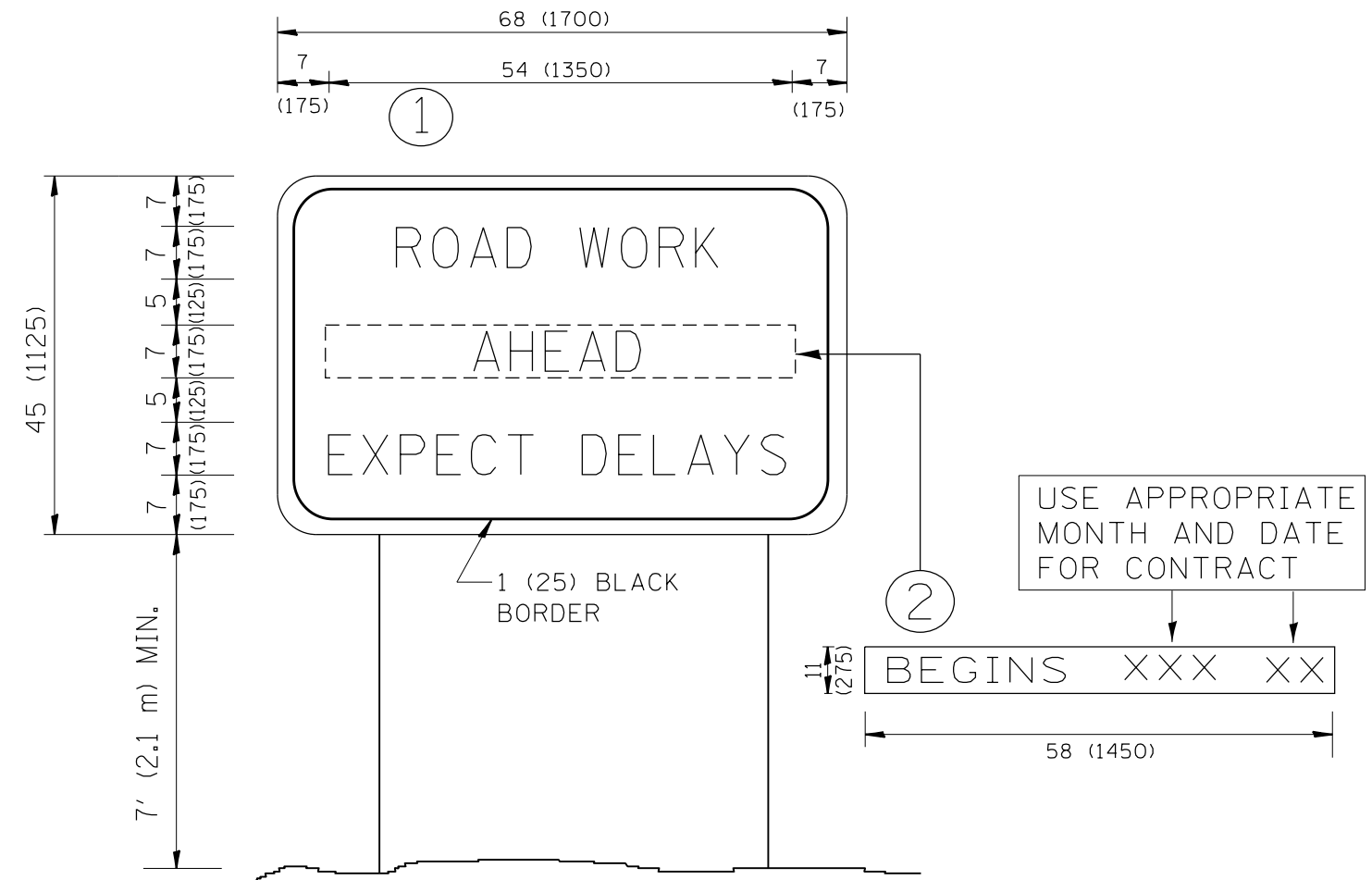
FILE NAME =	USER NAME = pyrzenowski	DESIGNED - M. DE YONG	REVISED - M. DE YONG 05-08-92
p:\11\084EBIDINTEG\11\inois.gov\PIWIDOT\Documents\IDOT Offices\District 1\Projects\DI05016\Design\DI05016-sht-plan.dgn		CHECKED -	REVISED - R. SHAH 09-09-94
		DATE - 07-25-90	REVISED - R. SHAH 10-25-94
			REVISED - R. SHAH 06-12-96

**STATE OF ILLINOIS
DEPARTMENT OF TRANSPORTATION**

**DETAIL OF STORM SEWER
CONNECTION TO EXISTING SEWER**

SCALE: NONE SHEET NO. 1 OF 1 SHEETS STA. TO STA.

F.A. RTE.	SECTION	COUNTY	TOTAL SHEETS	SHEET NO.
2585	3346-T	COOK	10	7
BD500-01 (BD-7)			CONTRACT NO. 62B50	
FED. ROAD DIST. NO. 1 ILLINOIS FED. AID PROJECT				

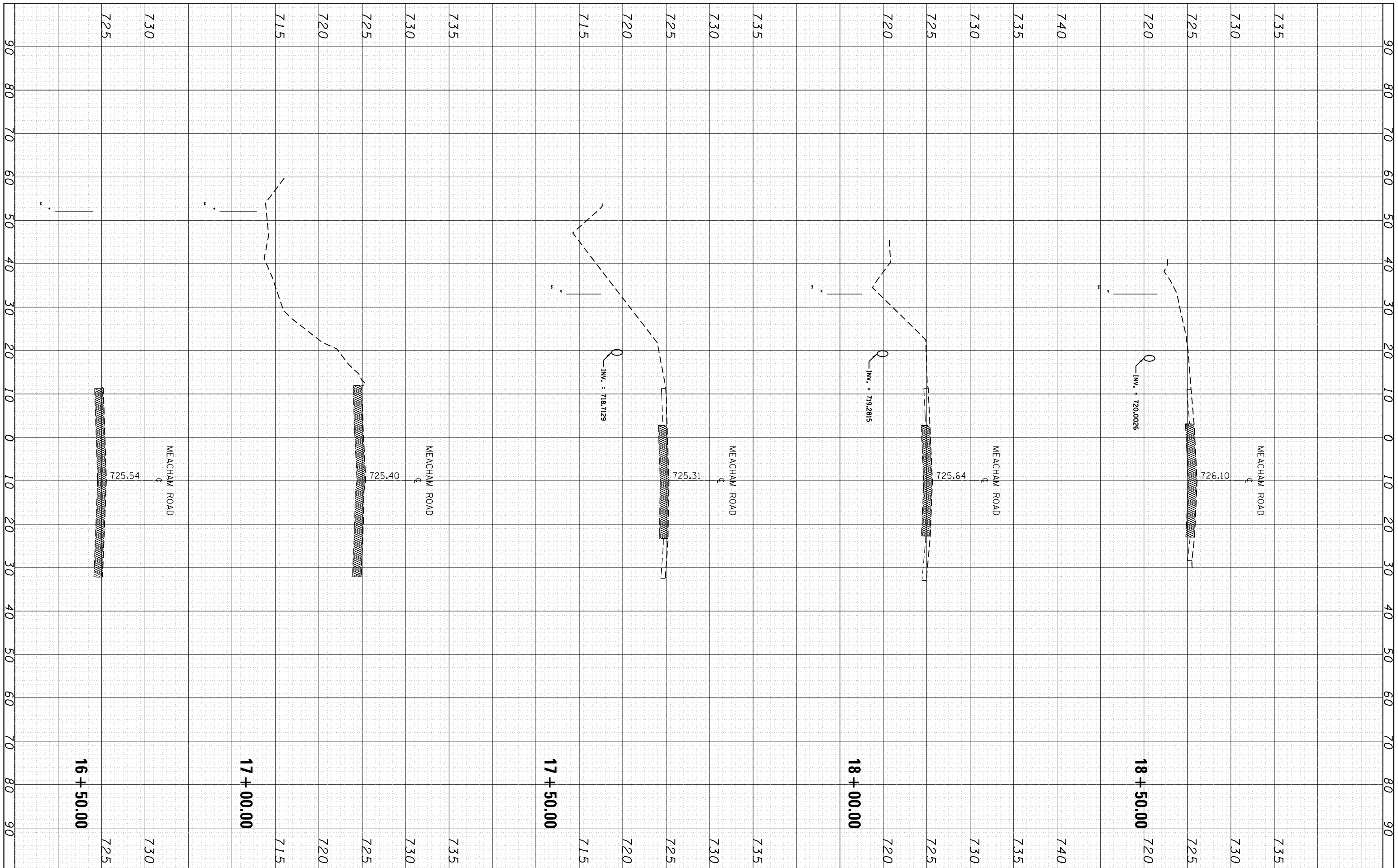


NOTES:

1. USE BLACK LETTERING ON ORANGE BACKGROUND.
2. ERECT SIGNS IN ADVANCE OF THE LOCATION FOR THE "ROAD CONSTRUCTION AHEAD" SIGN AT LOCATIONS AS DIRECTED BY THE ENGINEER.
3. ERECT SIGN ① WITH INSTALLED PANEL ② ONE WEEK PRIOR TO THE START OF CONSTRUCTION.
4. REMOVE PANEL ② SOON AFTER THE START OF CONSTRUCTION.
5. SEE SPECIAL PROVISION FOR "TEMPORARY INFORMATION SIGNING" FOR ADDITIONAL INFORMATION.
6. ONE SIGN ASSEMBLY EQUALS 25.70 SQ. FT. (2.3 SQ. M.)
7. SHALL BE PAID FOR AS TEMPORARY INFORMATION SIGNING.

ALL DIMENSIONS ARE IN INCHES (MILLIMETERS) UNLESS OTHERWISE SHOWN.

FILE NAME =	USER NAME = pyrozenowskirb	DESIGNED -	REVISED - R. MIRS 09-15-97	STATE OF ILLINOIS DEPARTMENT OF TRANSPORTATION	ARTERIAL ROAD INFORMATION SIGN	F.A. RTE.	SECTION	COUNTY	TOTAL SHEETS	SHEET NO.
p:\11\084EBIDINTEG.illinois.gov\PIWIDOT\Documents\DOT Offices\District 1\Projects\DI05016\Design\DI05016-sht-plan.dgn	DRAWN	REVISED - R. MIRS 12-11-97	2585			3346-T	COOK	10	8	
PLOT SCALE = 100.0000' / 1in.	CHECKED -	REVISED - T. RAMMACHER 02-02-99	TC-22			CONTRACT NO. 62B50				
PLOT DATE = 3/30/2016	DATE -	REVISED - C. JUCIUS 01-31-07	SCALE: NONE			SHEET NO. 1 OF 1 SHEETS		STA. TO STA.		FED. ROAD DIST. NO. 1 ILLINOIS FED. AID PROJECT



DATE	BY	SURVEYED	PLOTTED	TEMPLATE	AREAS	CHECKED
		FINAL	NOTE	BOOK		

DATE	BY	SURVEYED	PLOTTED	TEMPLATE	AREAS	CHECKED
		ORIGINAL	NOTE	BOOK		

FILE NAME = p:\11\084EBIDINTEG\Illinois.gov\PIDOT\Documents\

USER NAME = pyrzenowski
 NOT OFFICES\District 1\Projects\0105016\CAD\DRAWING\0105016-sht-plan.dgn
 PLOT SCALE = 100.0000' / 1" / 1" / 1"
 PLOT DATE = 3/30/2016

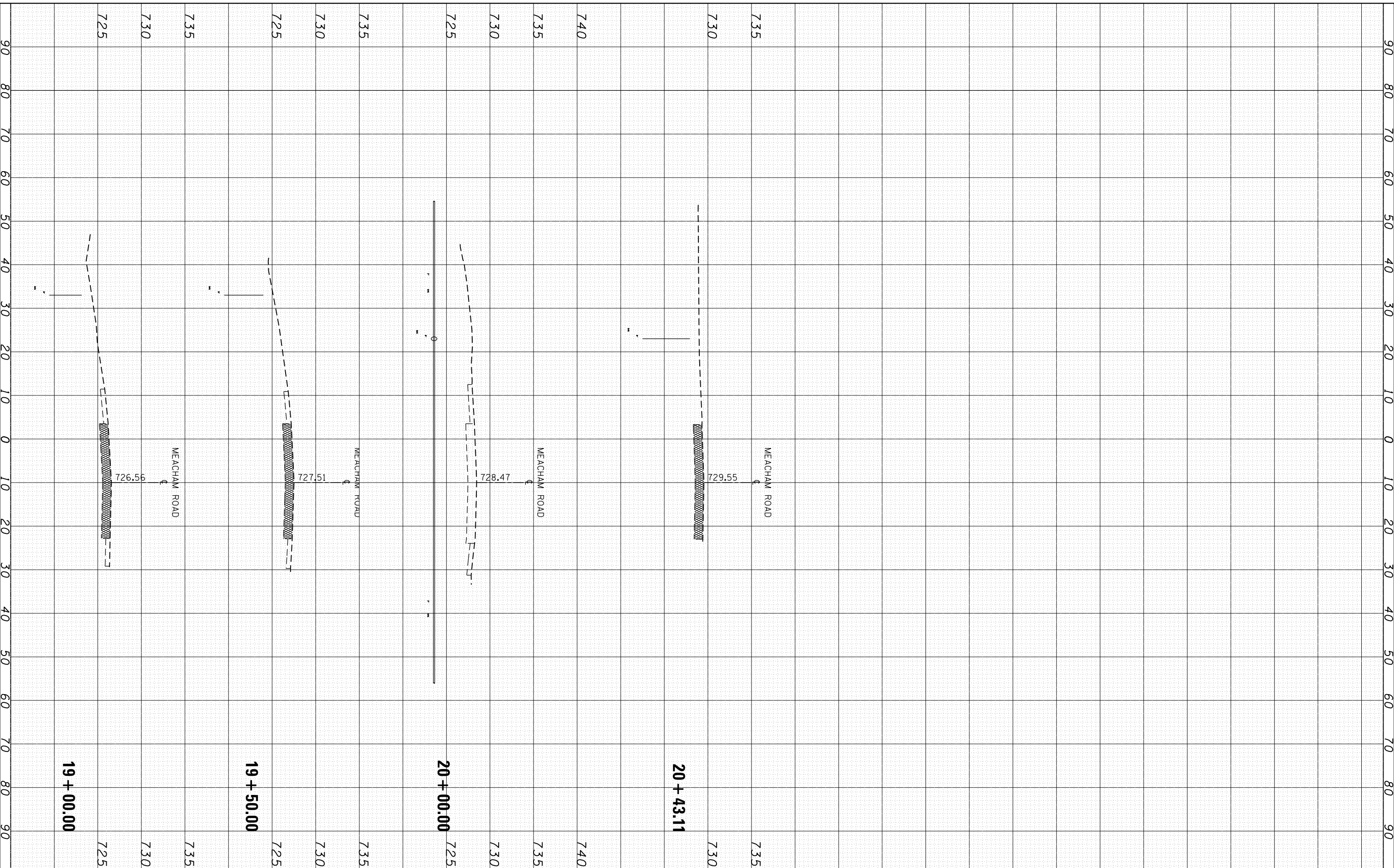
DESIGNED -
 CHECKED -
 DATE -

REVISED -
 REVISED -
 REVISED -

**STATE OF ILLINOIS
 DEPARTMENT OF TRANSPORTATION**

SCALE: **MEACHAM ROAD NEAR SALT CREEK
 CROSS SECTIONS**
 SHEET OF SHEETS STA. 16+50.00 TO STA. 18+50.00

F.A.U. RE.	SECTION	COUNTY	TOTAL SHEETS	SHEET NO.
2585	3346-T	COOK	10	9
CONTRACT NO. 62B50				
ILLINOIS FED. AID PROJECT				



DATE		SURVEYED	
BY		PLOTTED	
		TEMPLATE	
		AREAS	
		CHECKED	
FINAL SURVEY		NO.	
NOTE BOOK			

DATE		SURVEYED	
BY		PLOTTED	
		TEMPLATE	
		AREAS	
		CHECKED	
ORIGINAL SURVEY		NO.	
NOTE BOOK			

FILE NAME = p:\11084EBIDINTEG\Illinois.gov\PIDOT\Documents\

USER NAME = pyrzezowski
 IDOT Offices\District 1\Projects\0105016\CAD\DRAWING\0105016-sht-pln.dgn
 PLOT SCALE = 100.0000' / 1".
 PLOT DATE = 3/30/2016

DESIGNED -
 CHECKED -
 DATE -

REVISED -
 REVISED -
 REVISED -
 REVISED -

**STATE OF ILLINOIS
 DEPARTMENT OF TRANSPORTATION**

**CROSS SECTIONS
 MEACHAM ROAD NEAR SALT CREEK**

SCALE: SHEET OF SHEETS STA. 19+00.00 TO STA.

F.A.U. RTE.	SECTION	COUNTY	TOTAL SHEETS	SHEET NO.
2585	3346-T	COOK	10	10
CONTRACT NO. 62B50				
ILLINOIS FED. AID PROJECT				