

STATE OF ILLINOIS
DEPARTMENT OF TRANSPORTATION

F.A.I. RTE.	SECTION	COUNTY	TOTAL SHEETS	SHEET NO.
55	2016-007-1	WILL	24	1
		ILLINOIS	CONTRACT NO. 62C20	

FOR INDEX OF SHEETS, SEE SHEET NO. 2

IMPROVEMENT LOCATED WITHIN THE VILLAGES
OF DIAMOND AND BRAIDWOOD

PROPOSED HIGHWAY PLANS

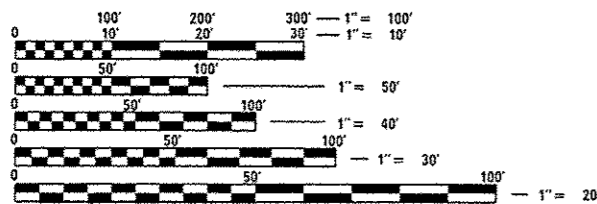
F.A.I. ROUTE 55: I-55 (INTERSTATE 55)
GRUNDY COUNTY LINE TO KANKAKEE RIVER
SECTION 2016-007-1
CRACK AND JOINT SEALING
WILL COUNTY

C-91-299-16

TRAFFIC DATA:

2015 ADT = 33400

POSTED SPEED LIMIT = 65 TO 70 MPH

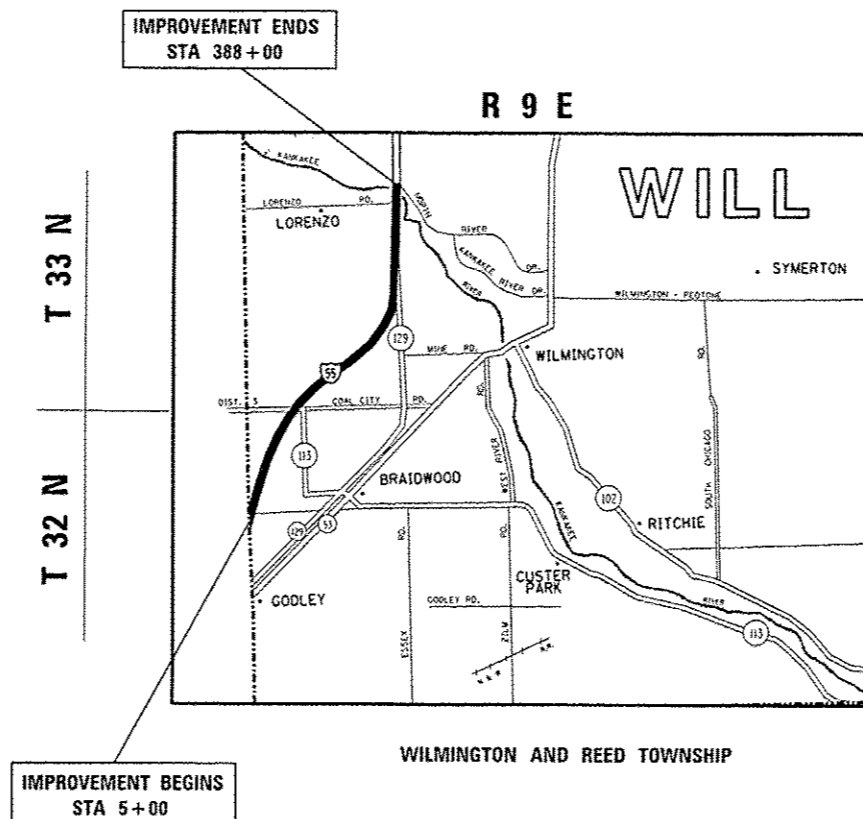


FULL SIZE PLANS HAVE BEEN PREPARED USING STANDARD ENGINEERING SCALES. REDUCED SIZED PLANS WILL NOT CONFORM TO STANDARD SCALES. IN MAKING MEASUREMENTS ON REDUCED PLANS, THE ABOVE SCALES MAY BE USED.

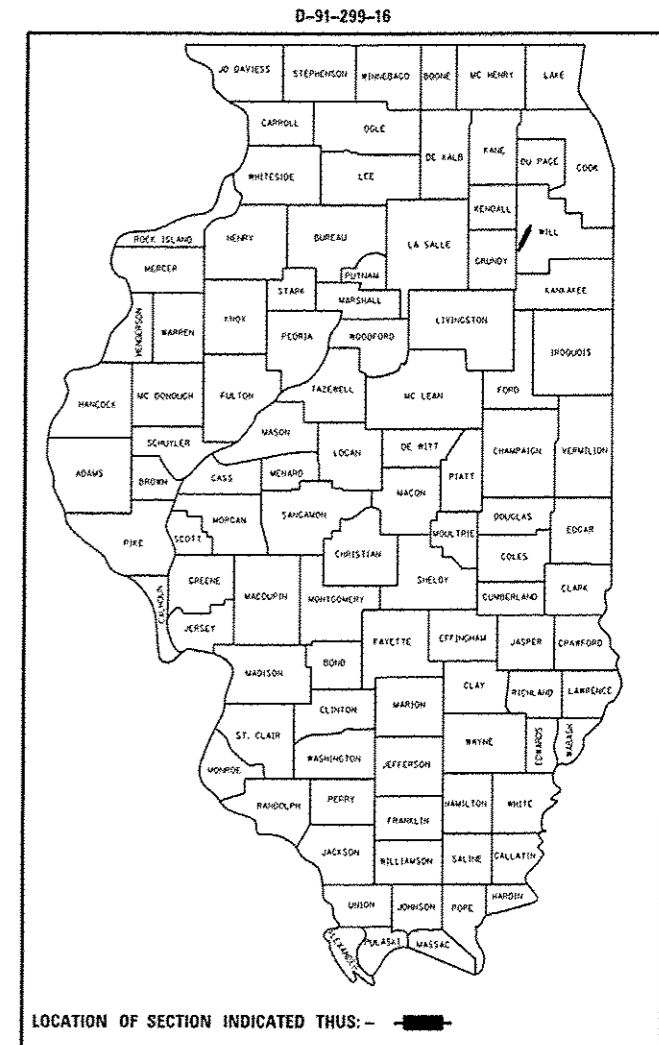
J.U.L.I.E.
JOINT UTILITY LOCATION INFORMATION FOR EXCAVATION
1-800-892-0123
OR 811

PROJECT ENGINEER: JEAN A. MIDY (847) 221-3056
PROJECT MANAGER: ISSAM RAYYAN (847) 705-4178

CONTRACT NO. 62C20



GROSS AND NET LENGTH OF IMPROVEMENT = 38300 FT. = 7.25 MILES



LOCATION OF SECTION INDICATED THIS: - [black rectangle]

STATE OF ILLINOIS
DEPARTMENT OF TRANSPORTATION

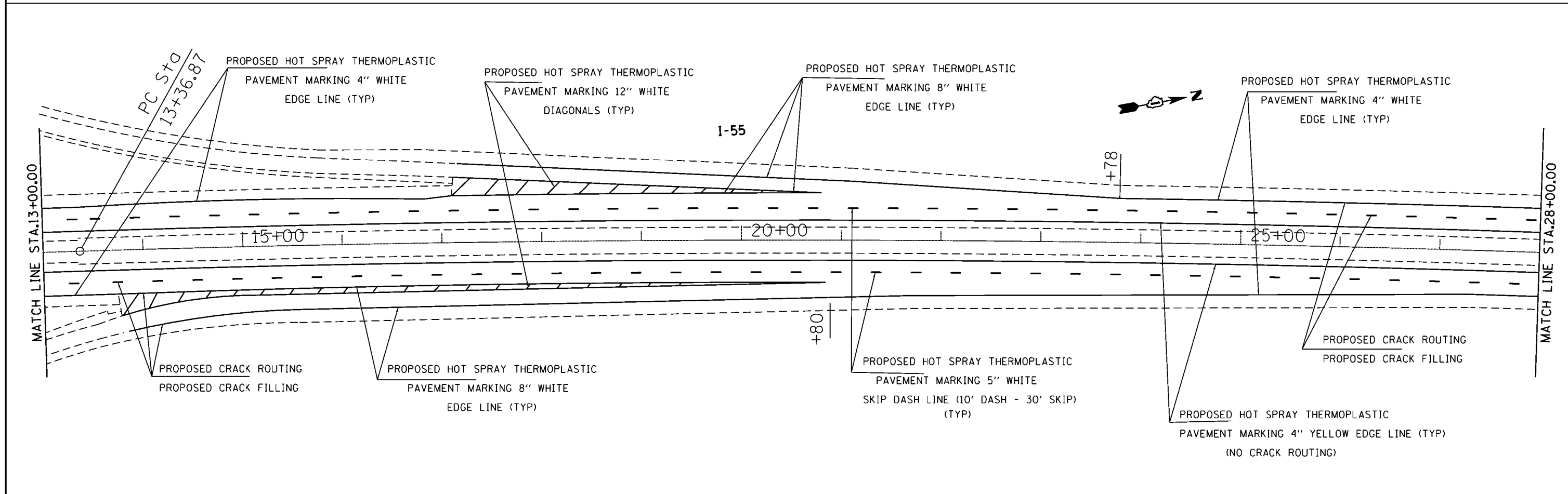
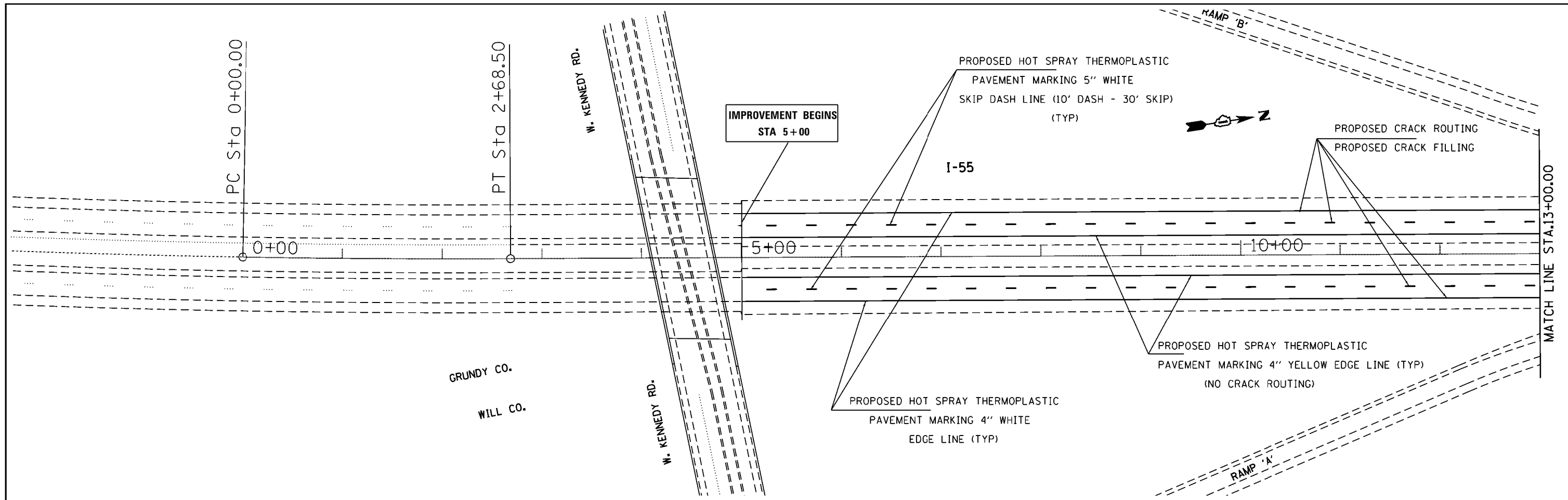
SUBMITTED *March 29, 2016*

J. A. Midy
REGIONAL ENGINEER

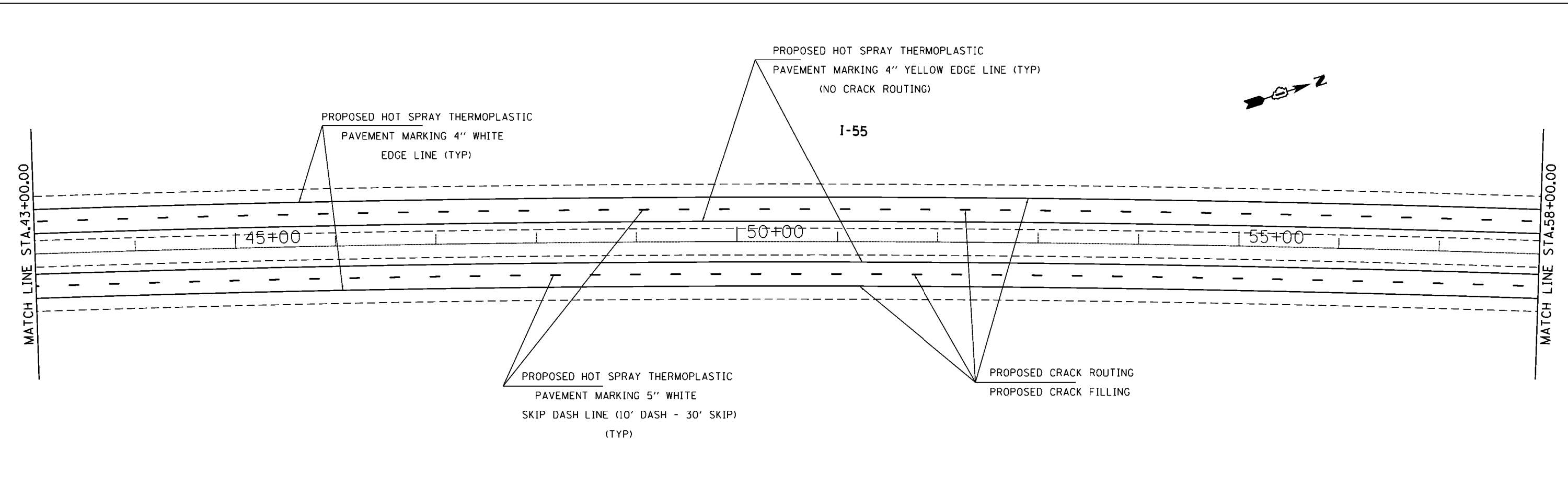
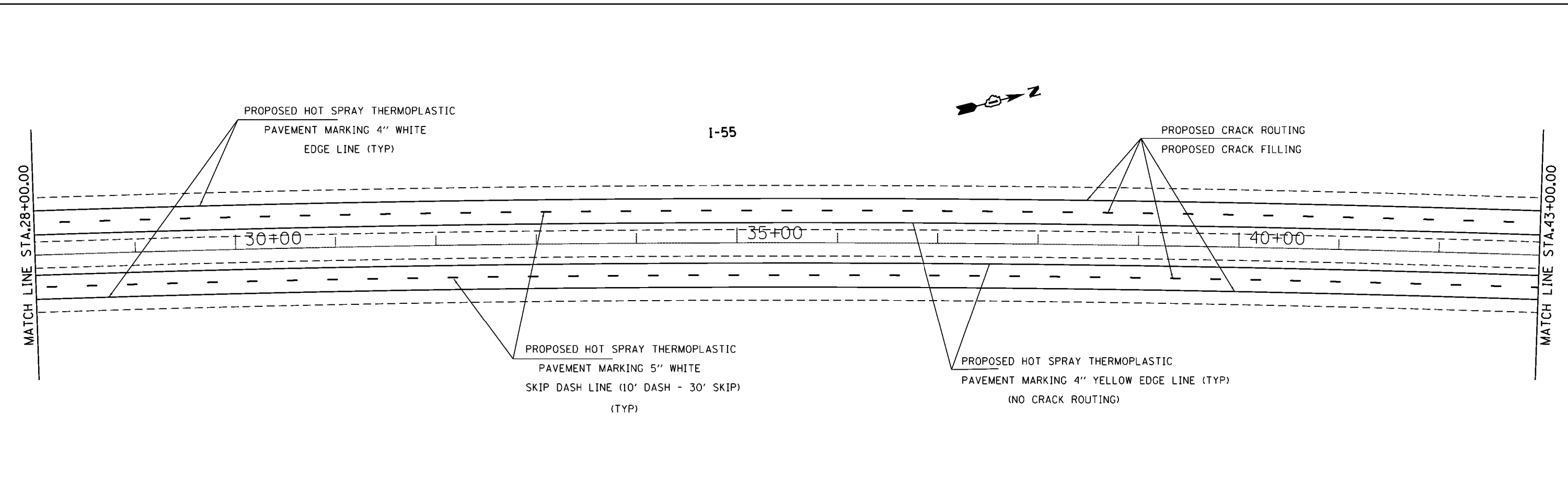
May 6, 2016
M. A. Addis
ENGINEER OF DESIGN AND ENVIRONMENT

May 6, 2016
James A. Addis
DIRECTOR OF PROGRAM DEVELOPMENT

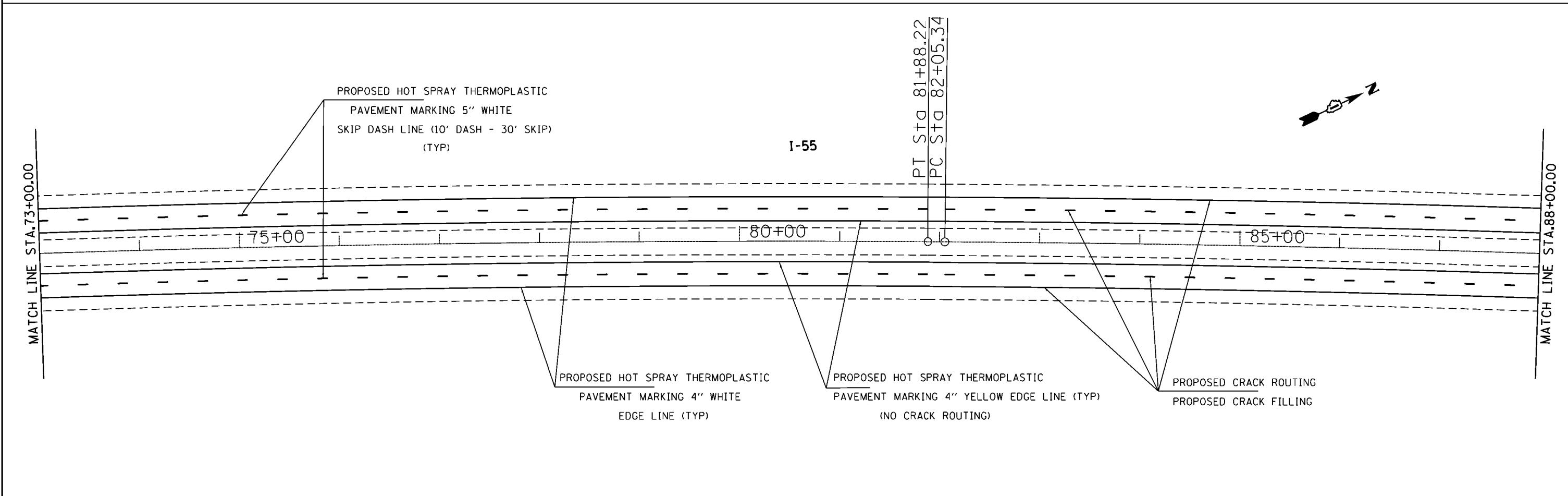
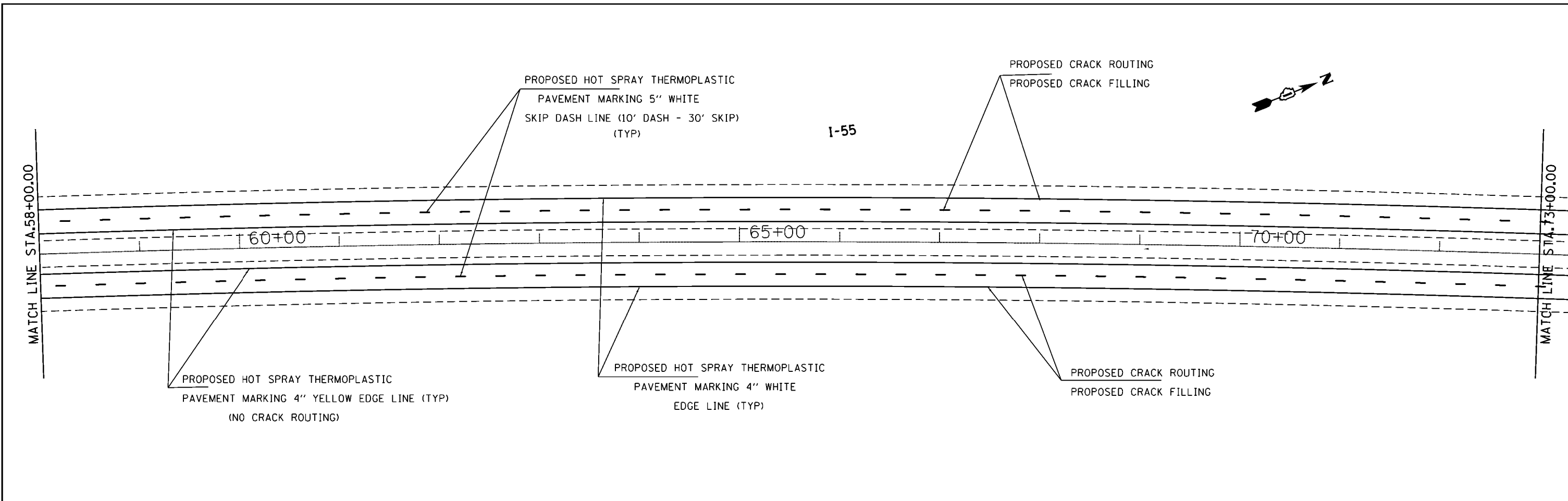
PRINTED BY THE AUTHORITY
OF THE STATE OF ILLINOIS



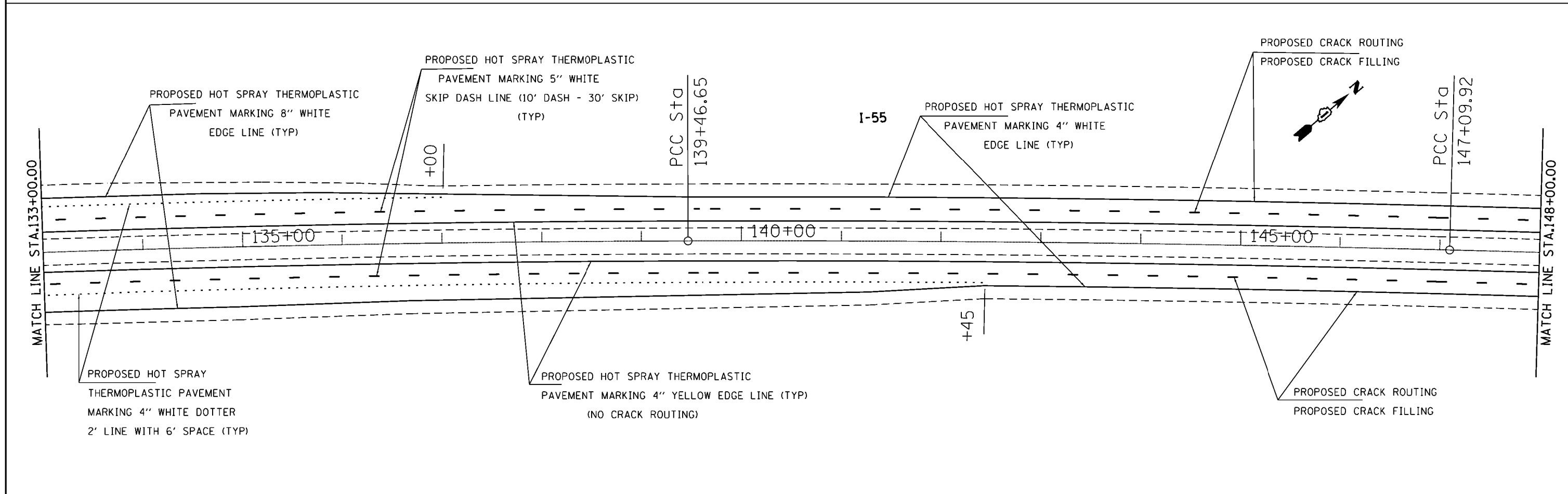
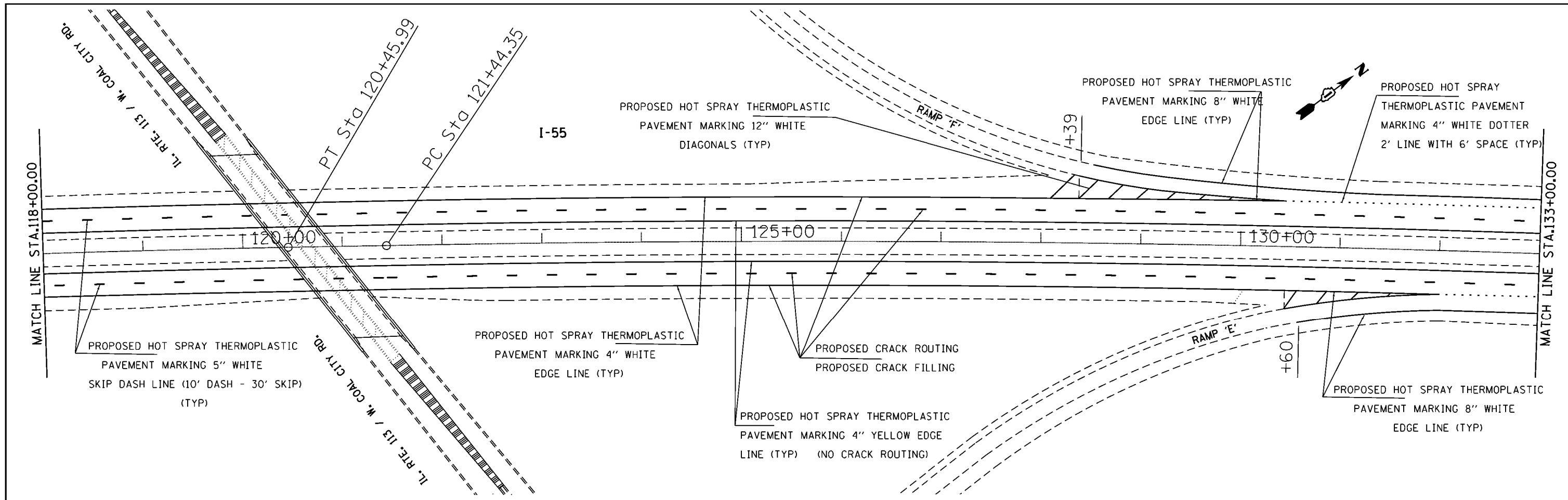
FILE NAME = p:\11\084EBID\INTEG\illinois.gov\FWIDOT\Documents\IDOT Offices\District 1\Projects\DI299\BRM\Beto\Design\I-55 (Temp)\sht-plan.dwg	USER NAME = gorenautob	DESIGNED -	REVISED -	STATE OF ILLINOIS DEPARTMENT OF TRANSPORTATION	ROADWAY PLAN I-55 (GRUNDY COUNTY LINE TO KANKAKEE RIVER)			F.A.I. RTE. = 55	SECTION = 2016-007-1	COUNTY = WILL	TOTAL SHEETS = 24	SHEET NO. = 4
	PLOT SCALE = 100.0000' / 1" =	CHECKED -	REVISED -					CONTRACT NO. 62C20				
Default	PLOT DATE = 3/31/2016	DATE -	REVISED -	SCALE: SHEET OF SHEETS STA. TO STA.			ILLINOIS FED. AID PROJECT					



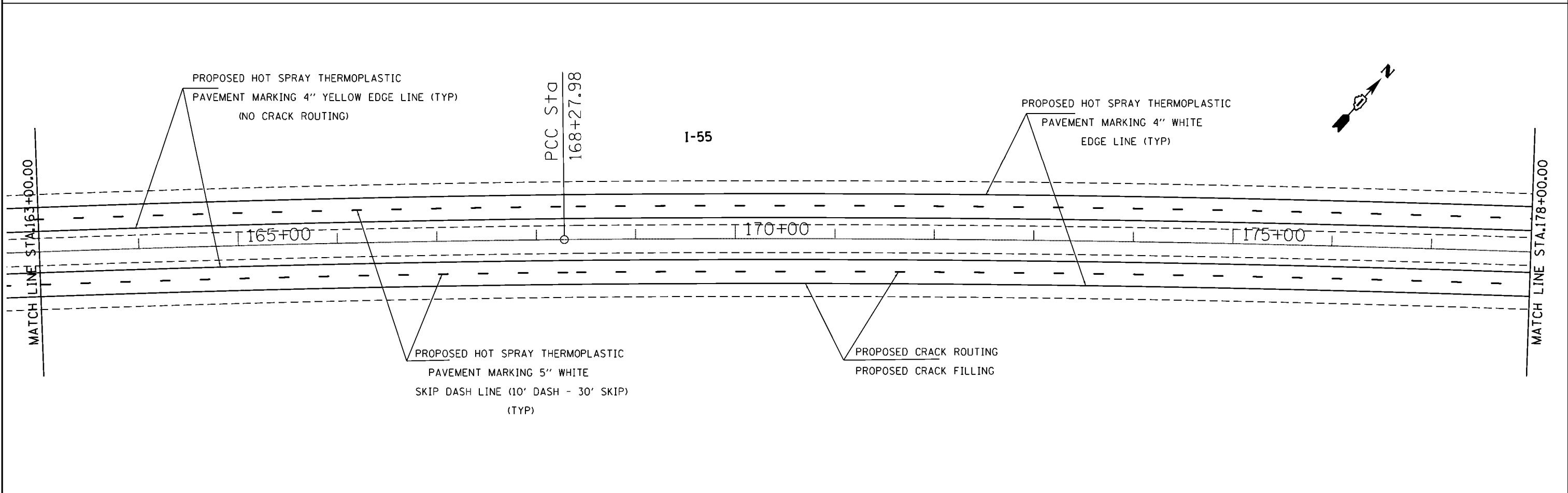
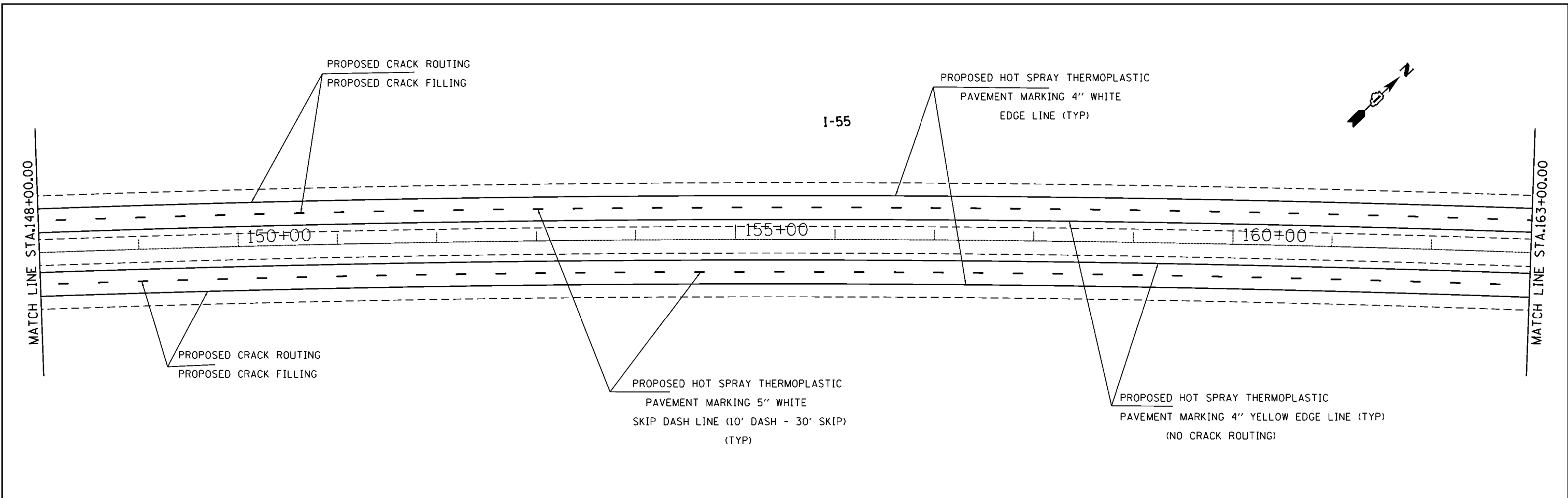
FILE NAME :	USER NAME : gorenqautab	DESIGNED -	REVISED -	STATE OF ILLINOIS DEPARTMENT OF TRANSPORTATION	ROADWAY PLAN I-55 (GRUNDY COUNTY LINE TO KANKAKEE RIVER)	F.A.I. RTE.	SECTION	COUNTY	TOTAL SHEETS	SHEET NO.	
pw:\IL\084EBID\INTEG\illinois.gov\FWIDOT\Documents\IDOT Offices\District 1\Projects\1299\BRM\02to\Design\I-55 (Temp)\sht-plan.dgn	PLLOT SCALE = 100.0000' / 1in.	CHECKED -	REVISED -			55	2016-007-1	WILL	24	5	
Default	PLLOT DATE = 3/31/2016	DATE -	REVISED -			CONTRACT NO. 62C20					
						ILLINOIS FED. AID PROJECT					



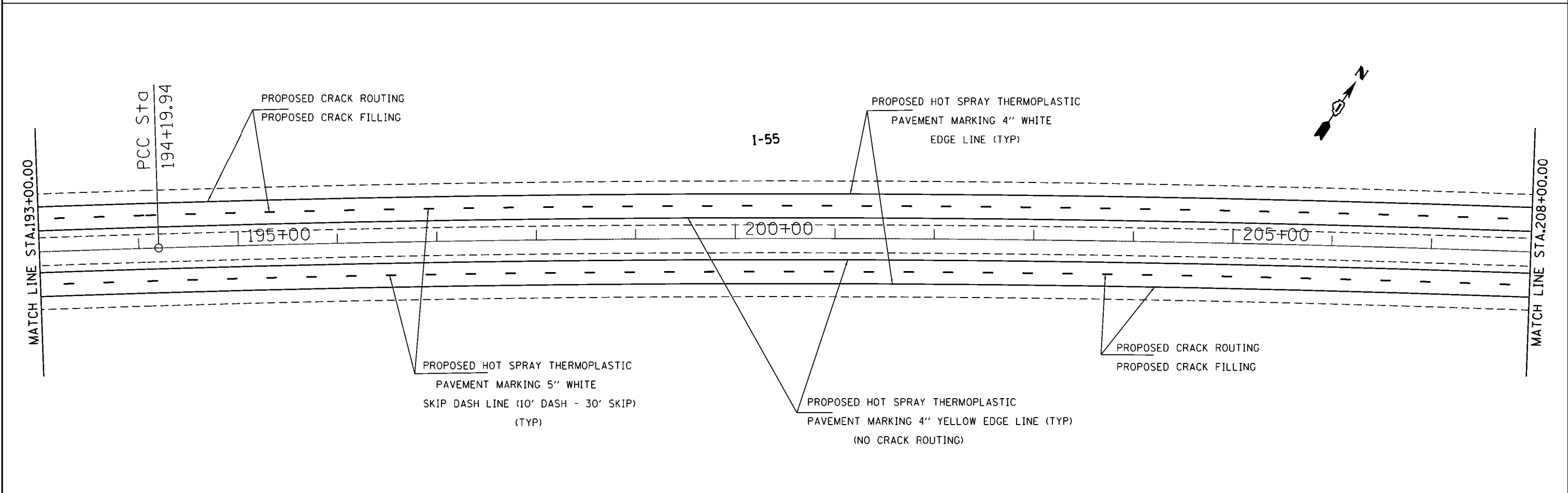
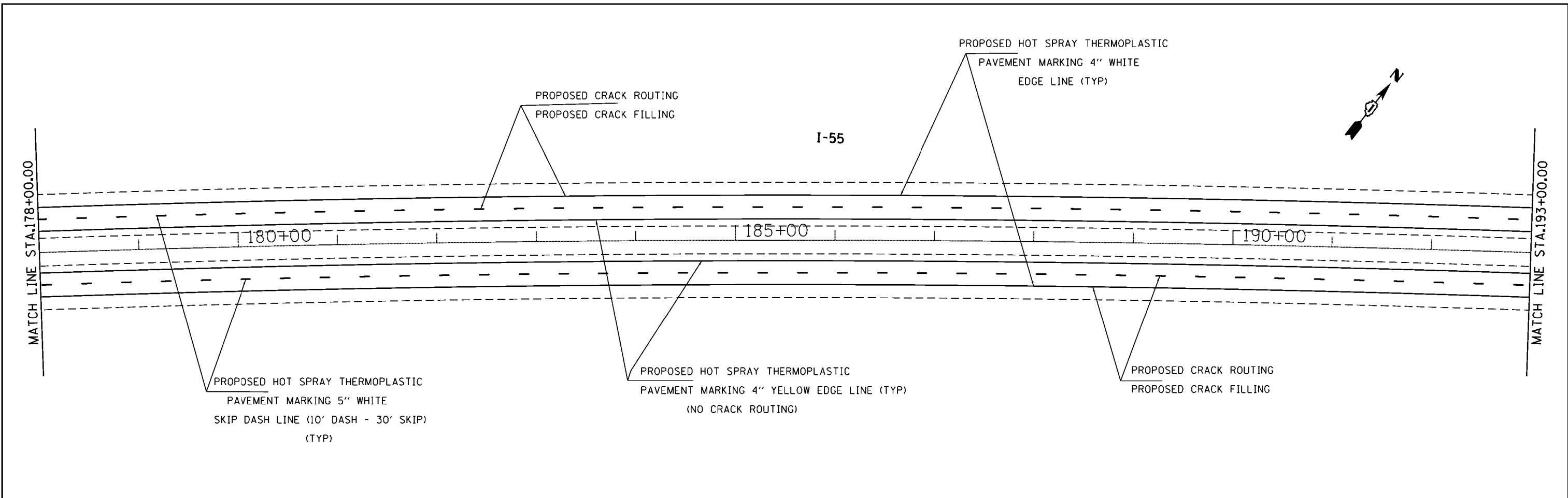
FILE NAME = p:\11\084EBID\INTEG\illinois.gov\FWIDOT\Documents\DOT Offices\District 1\Projects\1299\BRW\1299\1-55 (Temp)-sht-plan.dgn	USER NAME = gorengeautab	DESIGNED -	REVISED -	STATE OF ILLINOIS DEPARTMENT OF TRANSPORTATION	ROADWAY PLAN I-55 (GRUNDY COUNTY LINE TO KANKAKEE RIVER)			F.A.I. RTE. = 55	SECTION = 2016-007-1	COUNTY = WILL	TOTAL SHEETS = 24	SHEET NO. = 6
	PLOT SCALE = 100.0000' / 1in.	CHECKED -	REVISED -					CONTRACT NO. 62C20				
Default	PLOT DATE = 3/31/2016	DATE -	REVISED -	SCALE: SHEET OF SHEETS STA. TO STA.			ILLINOIS FED. AID PROJECT					



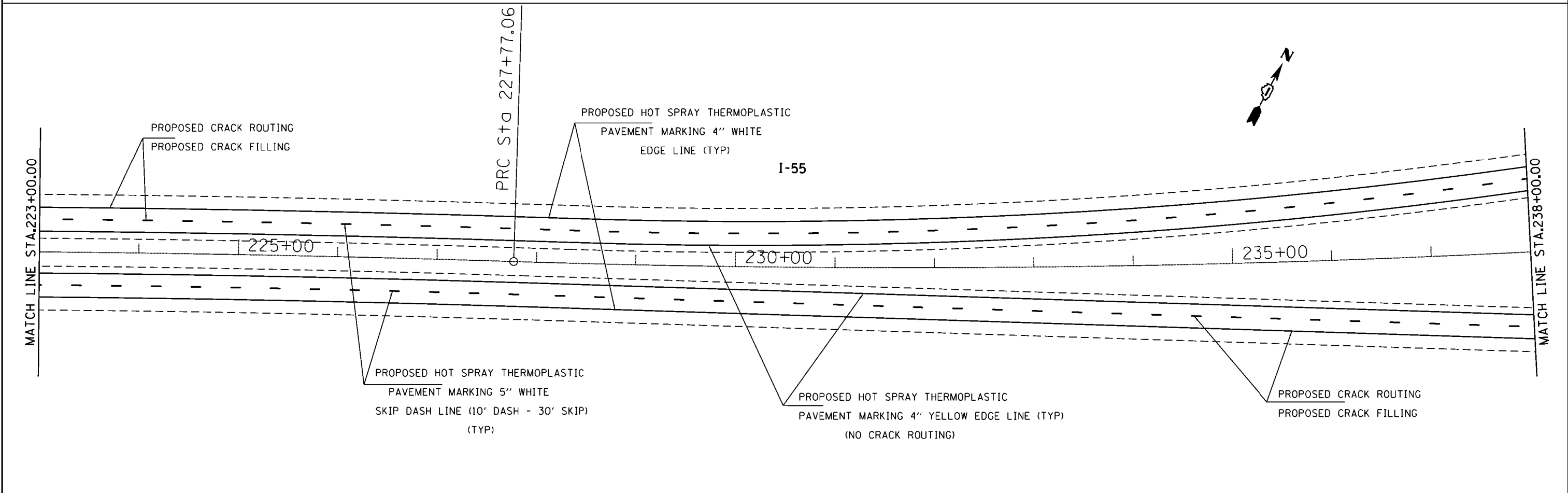
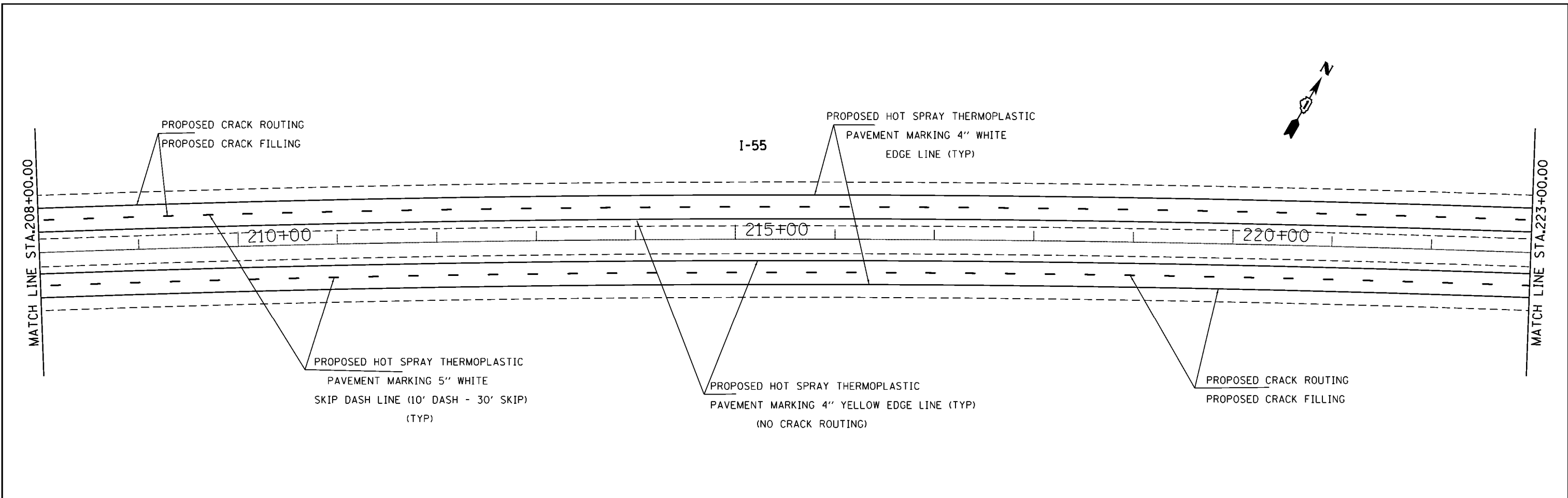
FILE NAME = p:\11084EBID\INTEG\illinois.gov\FWIDOT\Documents\IDOT Offices\District 1\Projects\12199\BRM\12199\1-55 (Temp)\sht-plan.dgn	USER NAME = gorenautob	DESIGNED -	REVISED -	STATE OF ILLINOIS DEPARTMENT OF TRANSPORTATION	ROADWAY PLAN I-55 (GRUNDY COUNTY LINE TO KANKAKEE RIVER)				F.A.I. RTE. = 55	SECTION = 2016-007-1	COUNTY = WILL	TOTAL SHEETS = 24	SHEET NO. = 8
	PLOT SCALE = 100.0000' / 1in.	CHECKED -	REVISED -						CONTRACT NO. 62C20				
Default	PLOT DATE = 3/31/2016	DATE -	REVISED -	SCALE:	SHEET	OF	SHEETS	STA.	TO	STA.	ILLINOIS FED. AID PROJECT		



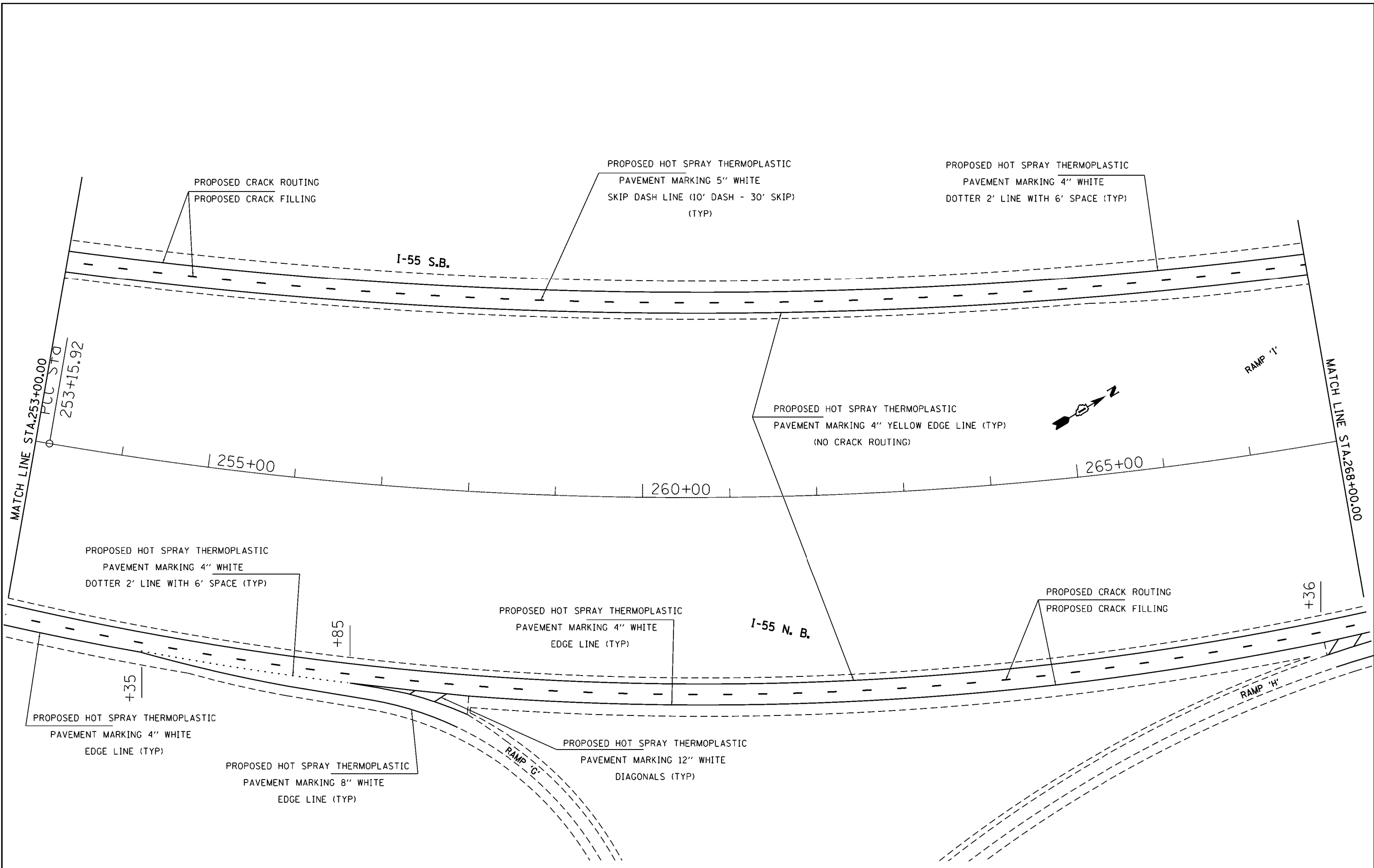
FILE NAME = p:\11084EBID\INTEG\illinois.gov\FWIDOT\Documents\IDOT Offices\District 1\Projects\1299\BRW\1299\1-55 (Temp)-sht-plan.dgn	USER NAME = gorenqautab	DESIGNED -	REVISED -	STATE OF ILLINOIS DEPARTMENT OF TRANSPORTATION	ROADWAY PLAN I-55 (GRUNDY COUNTY LINE TO KANKAKEE RIVER)			F.A.I. RTE. 55	SECTION 2016-007-1	COUNTY WILL	TOTAL SHEETS 24	SHEET NO. 9
	PLOT SCALE = 100.0000' / 1in.	CHECKED -	REVISED -					CONTRACT NO. 62C20				
Default	PLOT DATE = 3/31/2016	DATE -	REVISED -	SCALE:	SHEET	OF	SHEETS	STA.	TO	STA.	ILLINOIS FED. AID PROJECT	



FILE NAME = p:\11\084EBID\INTEG\illinois.gov\FWIDOT\Documents\IDOT Offices\District 1\Projects\1299\BRM\1299\1-55 (Temp)-sht-plan.dgn	USER NAME = gorenautab	DESIGNED -	REVISED -	STATE OF ILLINOIS DEPARTMENT OF TRANSPORTATION	ROADWAY PLAN I-55 (GRUNDY COUNTY LINE TO KANKAKEE RIVER)	F.A.I. RTE. = 55	SECTION = 2016-007-1	COUNTY = WILL	TOTAL SHEETS = 24	SHEET NO. = 10
	PLOT SCALE = 100.0000' / 1in.	CHECKED -	REVISED -			CONTRACT NO. 52C20		ILLINOIS FED. AID PROJECT		
Default	PLOT DATE = 3/31/2016	DATE -	REVISED -	SCALE:	SHEET OF SHEETS	STA. TO STA.				



FILE NAME =	USER NAME = gorenautab	DESIGNED -	REVISED -	STATE OF ILLINOIS DEPARTMENT OF TRANSPORTATION	ROADWAY PLAN I-55 (GRUNDY COUNTY LINE TO KANKAKEE RIVER)	F.A.I. RTE.	SECTION	COUNTY	TOTAL SHEETS	SHEET NO.	
pw\1\084EBID\INTEG\illinois.gov\FWIDOT\Documents\IDOT Offices\District 1\Projects\I299\BRM\I-55 (Temp)\sht-plan.dgn	BRM	REVISIONS	REVISIONS			55	2016-007-1	WILL	24	11	
PLOT SCALE = 100.0000' / 1in.	CHECKED -	REVISED -	REVISED -			CONTRACT NO. 62C20					
Default	DATE -	REVISED -	REVISED -			SCALE:	SHEET	OF	SHEETS	STA.	TO STA.



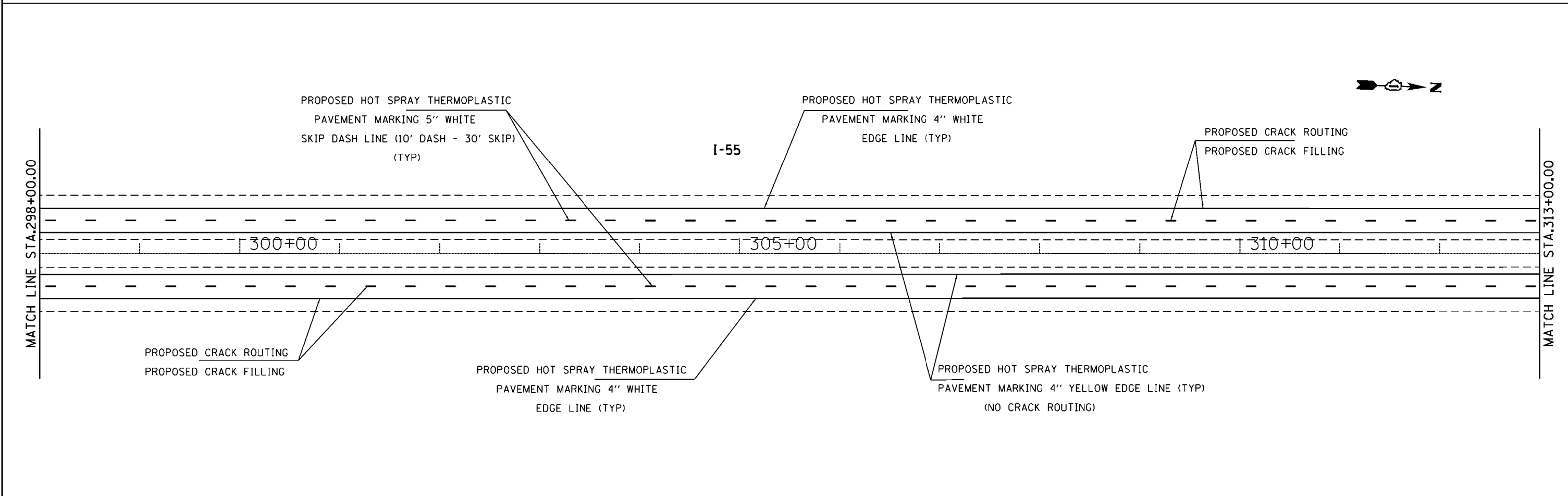
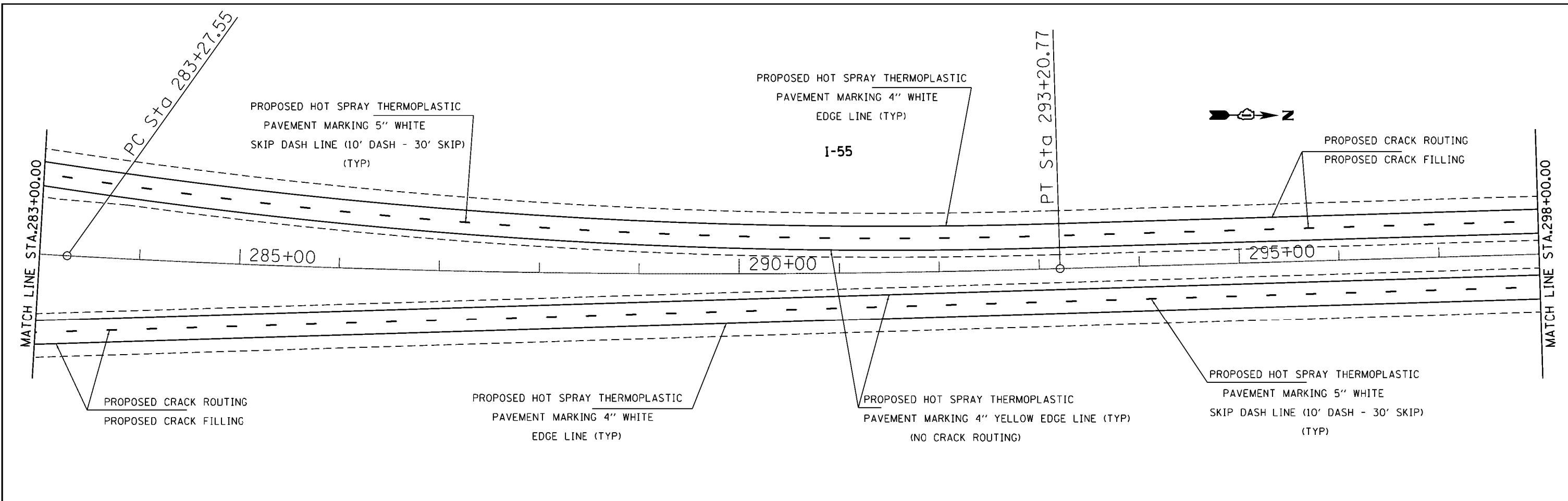
FILE NAME =	USER NAME = gorenautab	DESIGNED -	REVISED -
p:\1\084EBID\INTEG\illinois.gov\FWIDOT\Documents\DOT Offices\District 1\Projects\DI299\BRM\Beto\Design\I-55 (Temp)\sht-plan.dgn		REVISOR -	REVISOR -
Default	PLOT SCALE = 100.0000' / 1in.	CHECKED -	REVISOR -
	PLOT DATE = 4/1/2016	DATE -	REVISOR -

**STATE OF ILLINOIS
DEPARTMENT OF TRANSPORTATION**

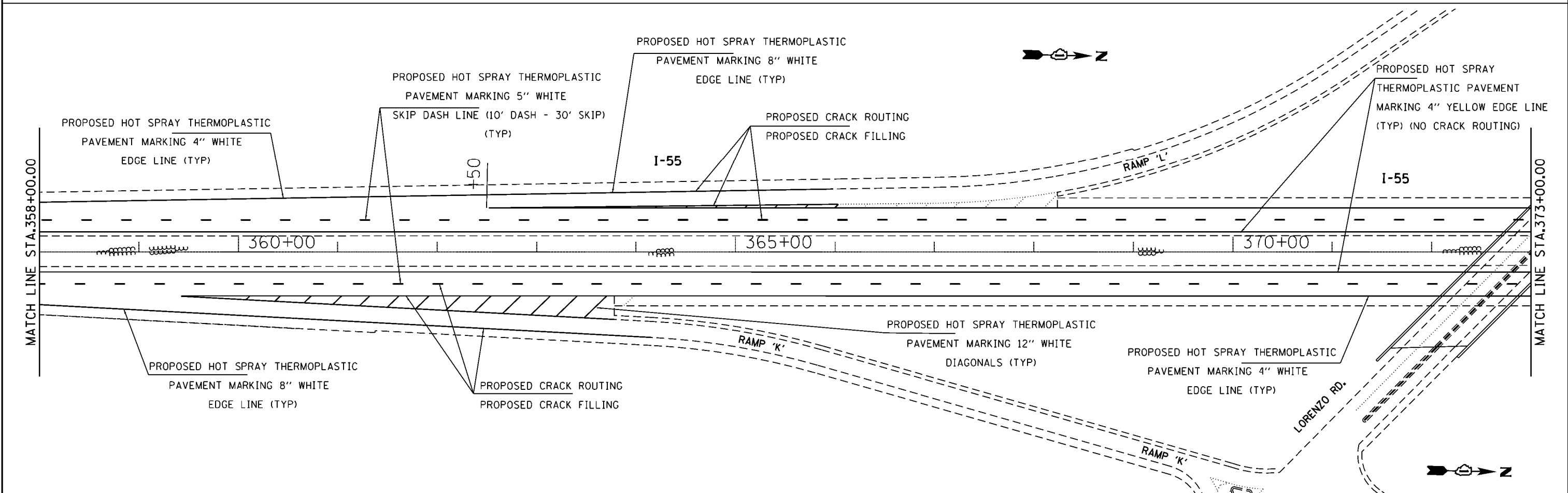
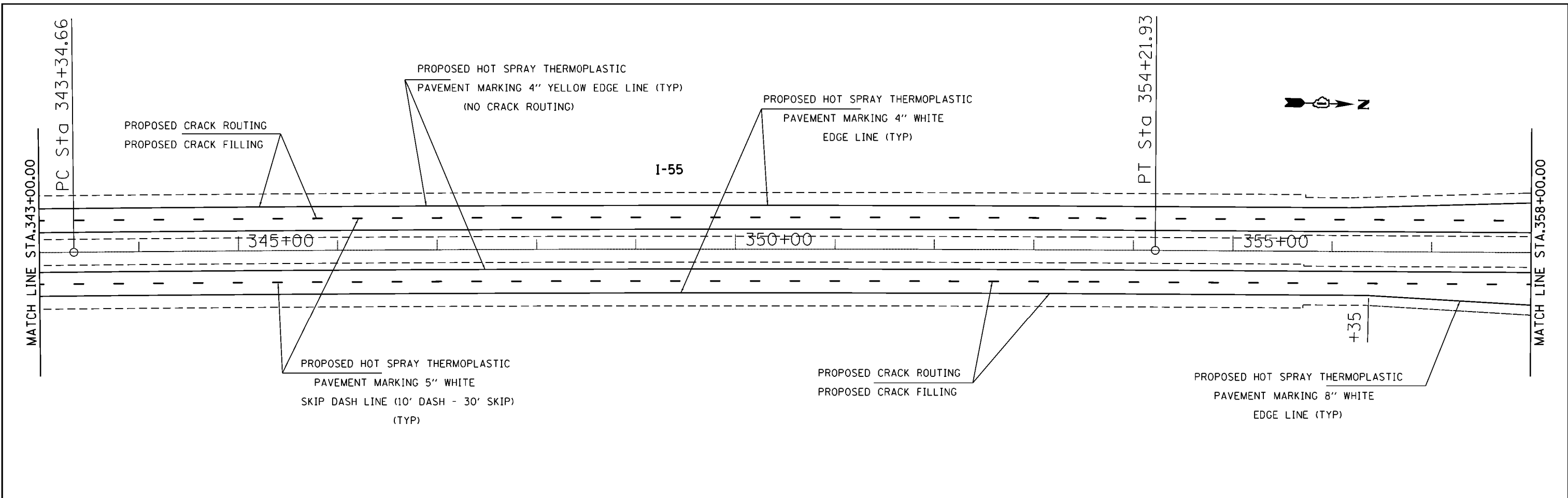
**ROADWAY PLAN
I-55 (GRUNDY COUNTY LINE TO KANKAKEE RIVER)**

SCALE: SHEET OF SHEETS STA. TO STA.

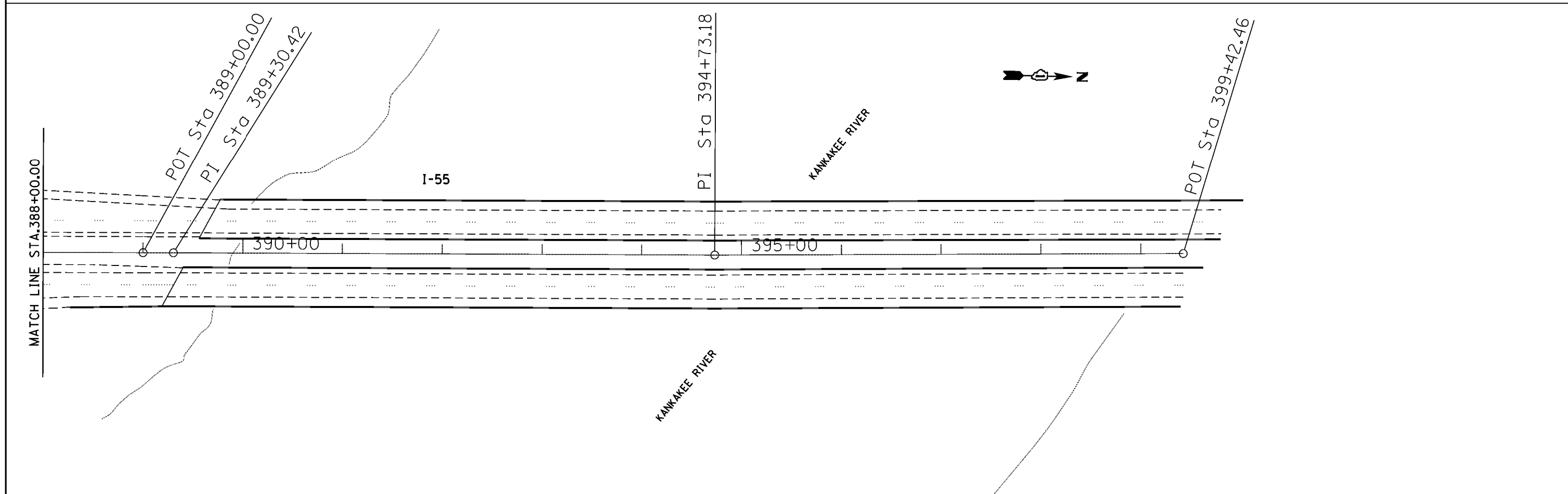
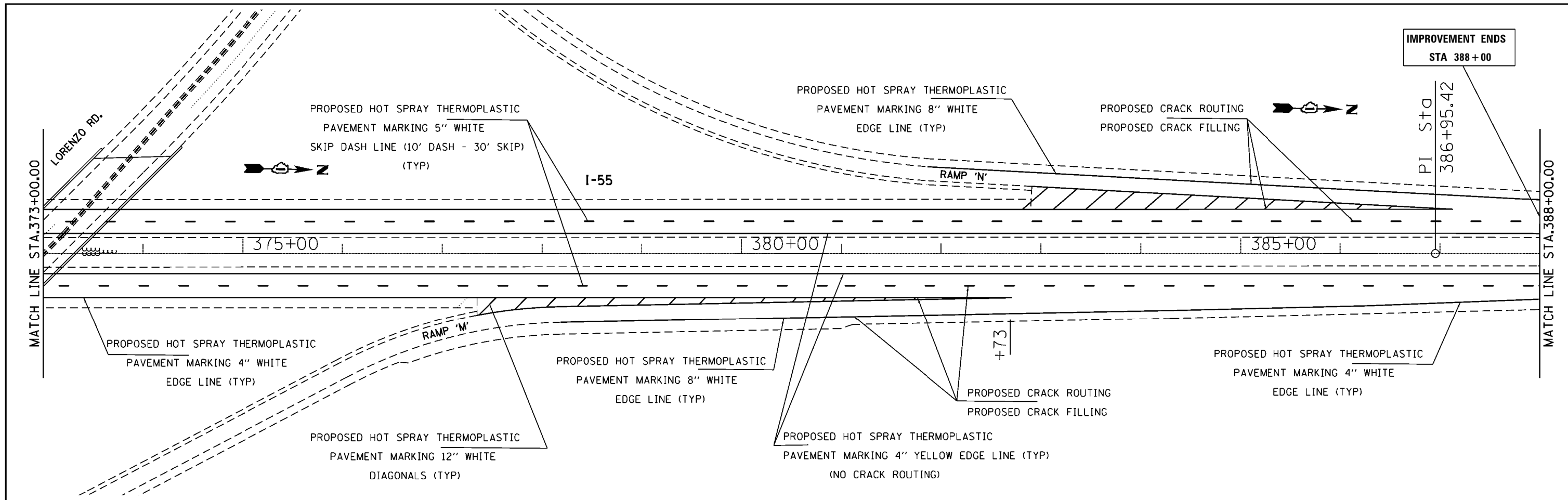
F.A.I. RTE.	SECTION	COUNTY	TOTAL SHEETS	SHEET NO.
55	2016-007-1	WILL	24	13
ILLINOIS FED. AID PROJECT			CONTRACT NO. 62C20	



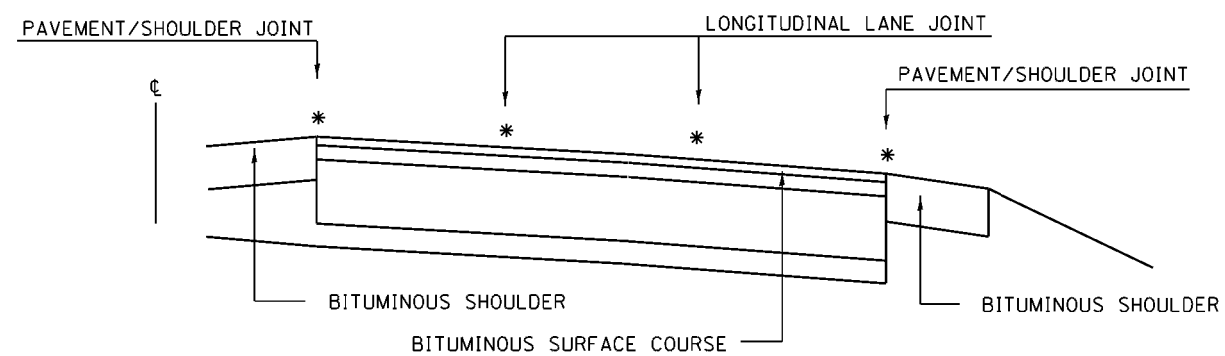
FILE NAME = p:\11\084EBID\INTEG\illinois.gov\FWIDOT\Documents\IDOT Offices\District 1\Projects\DI299\BRM\Beto\Design\I-55 (Temp)-sht-plan.dgn	USER NAME = gorenautab	DESIGNED -	REVISED -	STATE OF ILLINOIS DEPARTMENT OF TRANSPORTATION	ROADWAY PLAN I-55 (GRUNDY COUNTY LINE TO KANKAKEE RIVER)	F.A.I. RTE. = 55	SECTION = 2016-007-1	COUNTY = WILL	TOTAL SHEETS = 24	SHEET NO. = 15
	PLOT SCALE = 100.0000' / 1" =	CHECKED -	REVISED -			SCALE: _____	SHEET OF SHEETS	STA. TO STA.	CONTRACT NO. 62C20	
Default	PLOT DATE = 3/31/2016	DATE -	REVISED -	ILLINOIS FED. AID PROJECT						



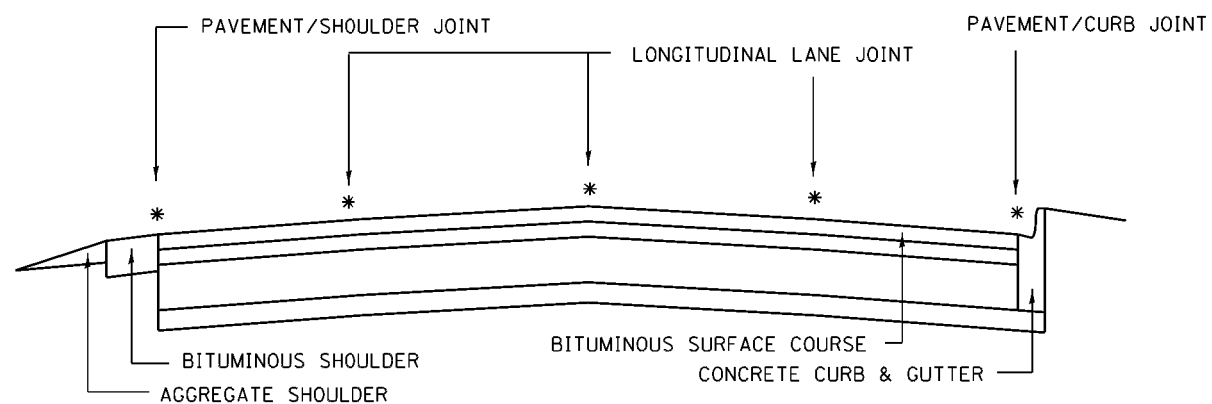
FILE NAME = p:\11084EBID\INTEG\illinois.gov\FWIDOT\Documents\IDOT Offices\District 1\Projects\DI299\BRM\Beto\Design\I-55 (Temp)-sht-plan.dgn	USER NAME = gorengeautab	DESIGNED -	REVISED -	STATE OF ILLINOIS DEPARTMENT OF TRANSPORTATION	ROADWAY PLAN I-55 (GRUNDY COUNTY LINE TO KANKAKEE RIVER)				F.A.I. RTE. = 55	SECTION = 2016-007-1	COUNTY = WILL	TOTAL SHEETS = 24	SHEET NO. = 17
	PLOT SCALE = 100.0000' / 1in.	CHECKED -	REVISED -						CONTRACT NO. 62C20				ILLINOIS FED. AID PROJECT
Default	PLOT DATE = 3/31/2016	DATE -	REVISED -	SCALE:	SHEET	OF	SHEETS	STA.	TO	STA.			



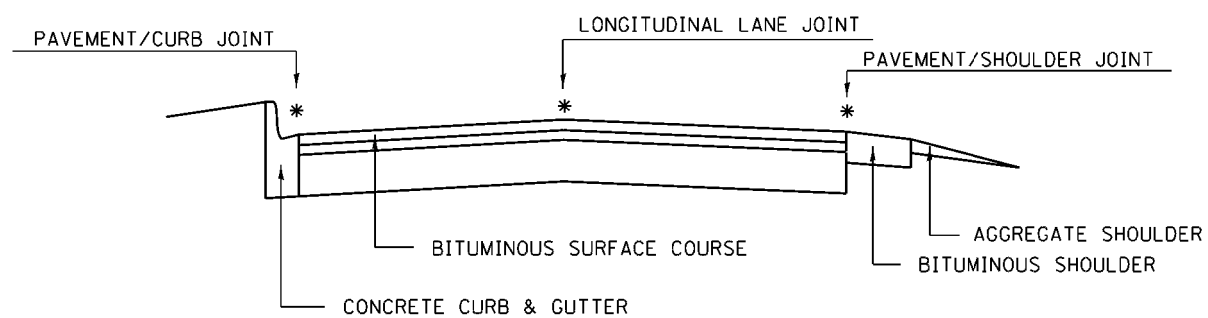
FILE NAME = p:\11084EBID\INTEG\illinois.gov\FWIDOT\Documents\DOT Offices\District 1\Projects\1299\BRM\1299\1-55 (Temp)\sht-plan.dgn	USER NAME = gorenautob	DESIGNED -	REVISED -	STATE OF ILLINOIS DEPARTMENT OF TRANSPORTATION	ROADWAY PLAN I-55 (GRUNDY COUNTY LINE TO KANKAKEE RIVER)				F.A.I. RTE. = 55	SECTION = 2016-007-1	COUNTY = WILL	TOTAL SHEETS = 24	SHEET NO. = 18
	PLOT SCALE = 100.0000' / 1in.	CHECKED -	REVISED -		SCALE:	SHEET	OF	SHEETS	STA.	TO STA.	CONTRACT NO. 62C20		
Default	PLOT DATE = 3/31/2016	DATE -	REVISED -		ILLINOIS FED. AID PROJECT								



MULTI-LANE DIVIDED PAVEMENT



MULTI-LANE UNDIVIDED PAVEMENT

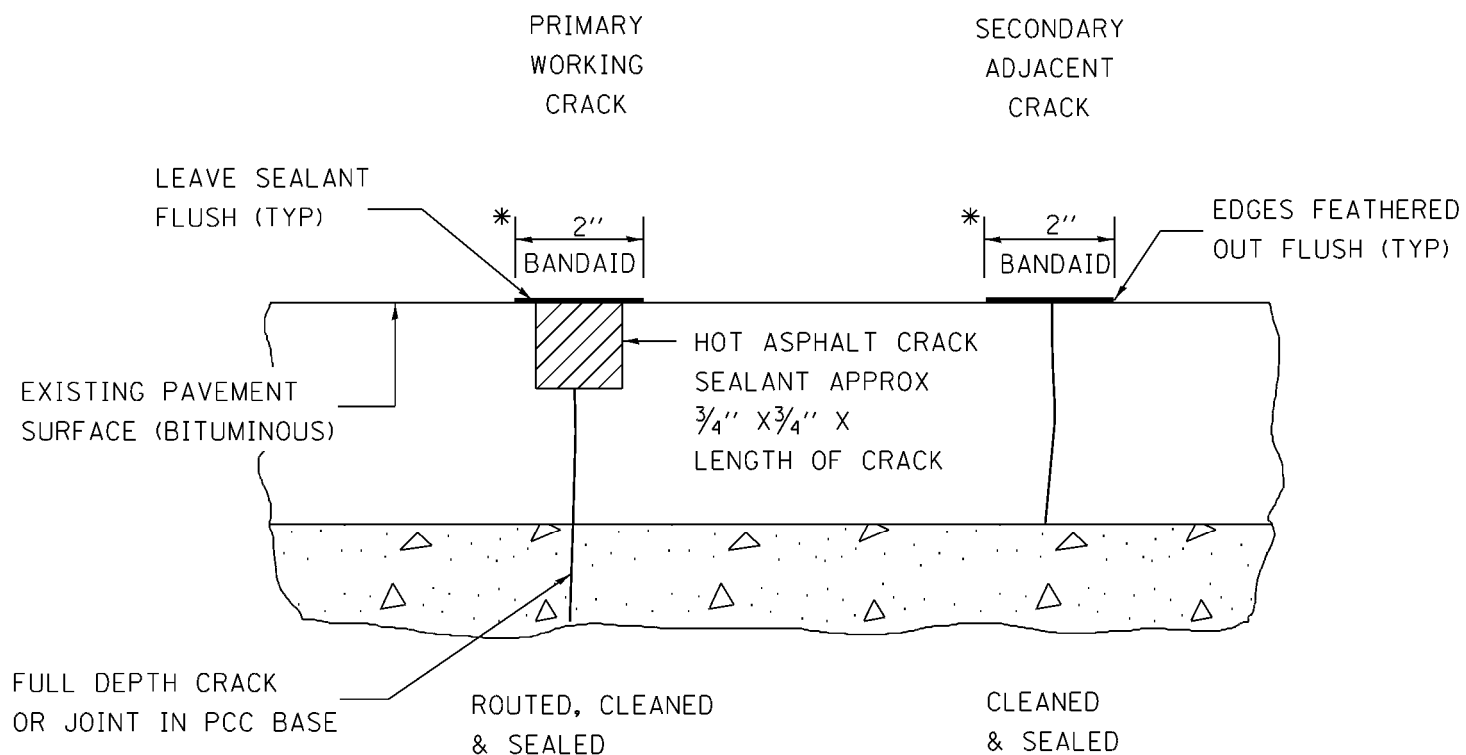


TWO-LANE PAVEMENT

PROPOSED TRANSVERSE CRACK ROUTING (PAVEMENT) & CRACK FILLING LOCATIONS NOT SHOWN

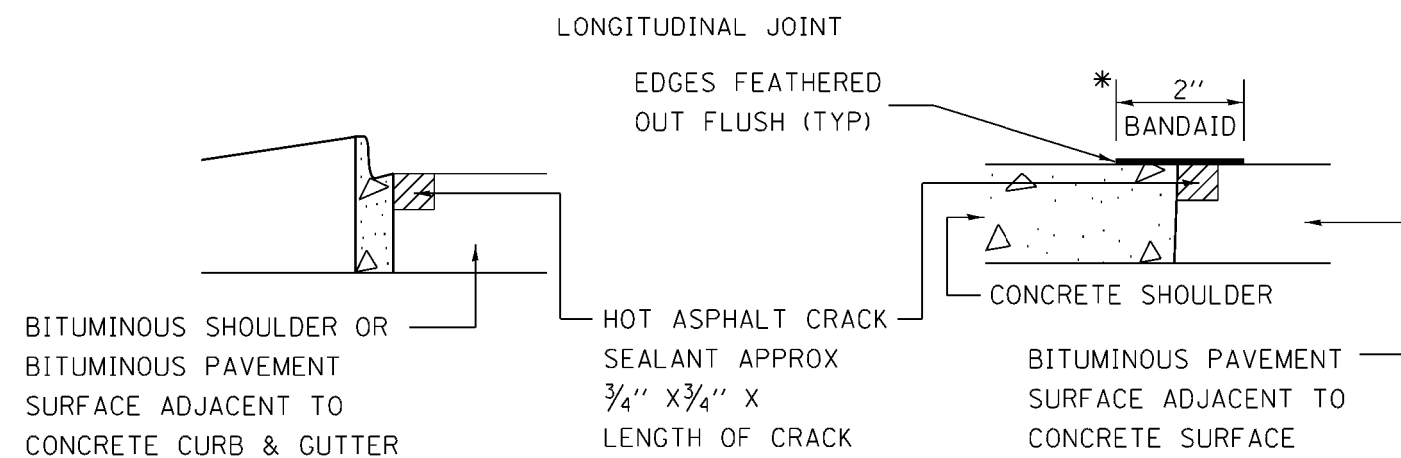
* PROPOSED LONGITUDINAL CRACK ROUTING (PAVEMENT) & CRACK FILLING LOCATIONS

GENERAL EXISTING TYPICAL SECTIONS



*

IN ALL LOCATIONS WHERE THE LONGITUDINAL CRACK CONFLICTS WITH EXISTING PAVEMENT MARKINGS (EITHER EDGE LINE OR LANE LINE) THE CRACK SHALL BE ROUTED & THE RESULTING RESERVOIR FILLED WITH SEALANT. ALL DAMAGES TO EXISTING RAISED REFLECTIVE PAVEMENT MARKERS SHALL BE REPLACED AT THE EXPENSE OF THE CONTRACTOR. ALL EXISTING PAVEMENT MARKINGS WITHIN THE PROJECT LIMITS SHALL BE RESTORED WITH HOT SPRAY THERMOPLASTIC PAVEMENT MARKINGS.



CRACK & JOINT SEALING DETAIL

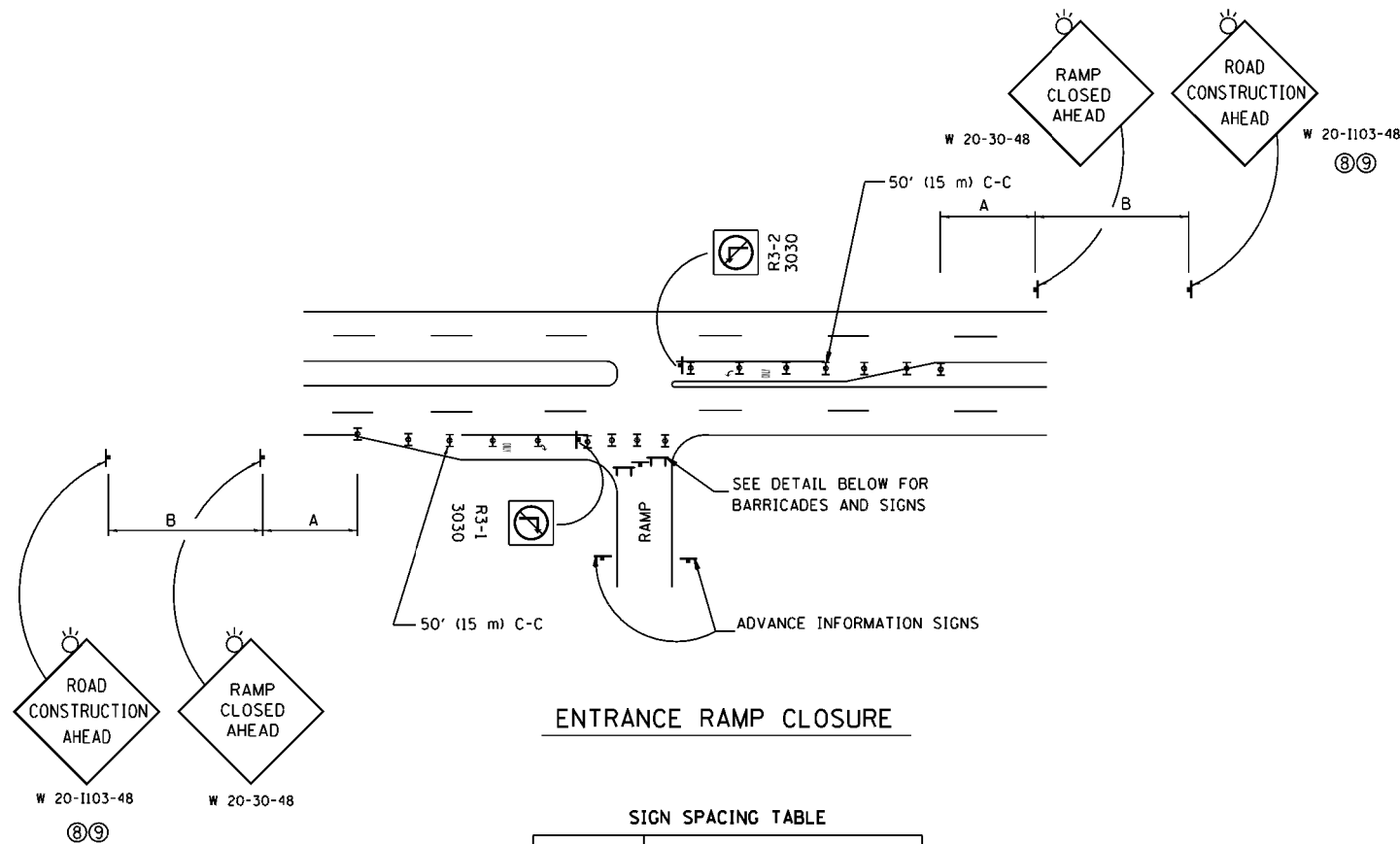
FILE NAME = I-55 (Temp)-sht-plen.dgn	USER NAME = gorenautab	DESIGNED -	REVISED -
		DRAWN -	REVISED -
		CHECKED -	REVISED -
		DATE -	REVISED -

STATE OF ILLINOIS
DEPARTMENT OF TRANSPORTATION

CRACK & JOINT SEALING DETAIL
I-55 (GRUNDY COUNTY LINE TO KANKAKEE RIVER)

SCALE: SHEET NO. OF SHEETS STA. TO STA.

F.A.I. RTE. = 55	SECTION = 2016-007-I	COUNTY = WILL	TOTAL SHEETS = 24	SHEET NO. = 19
				CONTRACT NO. 62C20
ILLINOIS FED. AID PROJECT				

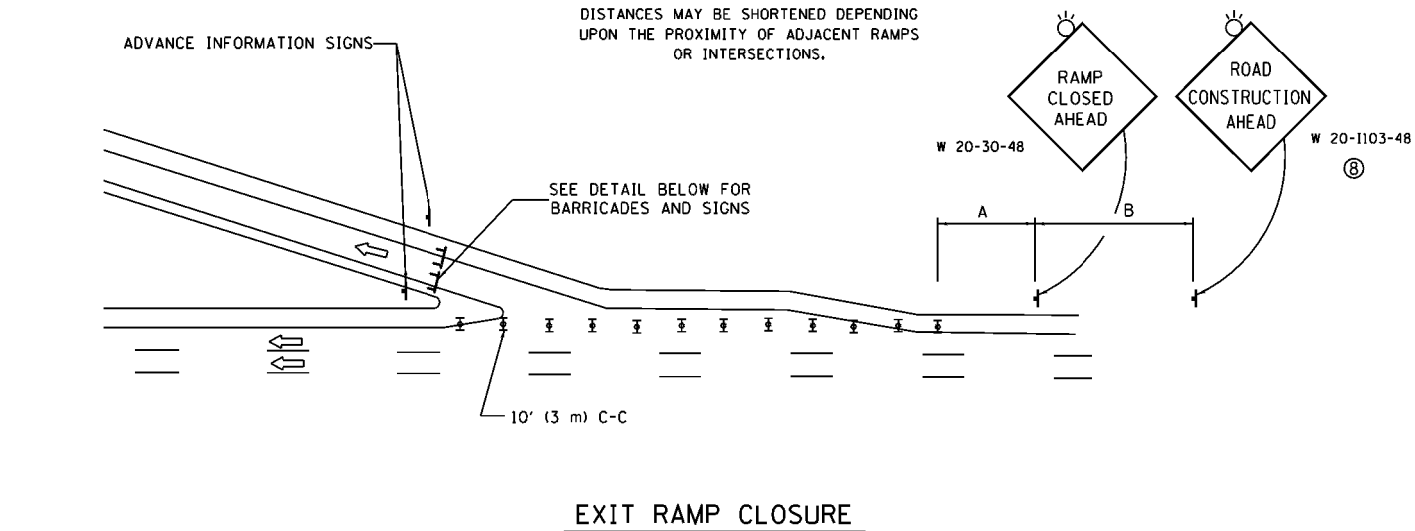


ENTRANCE RAMP CLOSURE

SIGN SPACING TABLE

FACILITY	DISTANCE BETWEEN SIGNS	
	A	B
EXPRESSWAY >24 HOURS	1000' (300 m)	1500' (450 m)
EXPRESSWAY <24 HOURS	500' (150 m)	500' (150 m)
ARTERIAL 55 MPH	500' (150 m)	500' (150 m)
ARTERIAL 50-45 MPH	350' (100 m)	350' (100 m)
ARTERIAL <45 MPH	200' (60 m)	200' (60 m)

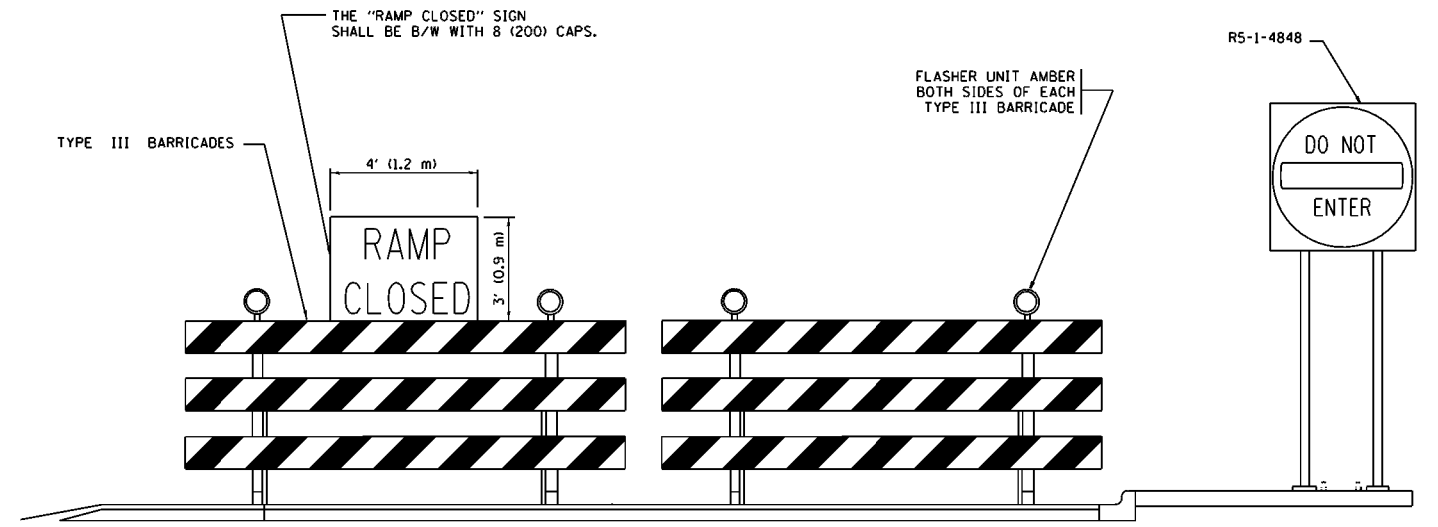
DISTANCES MAY BE SHORTENED DEPENDING UPON THE PROXIMITY OF ADJACENT RAMPS OR INTERSECTIONS.



EXIT RAMP CLOSURE

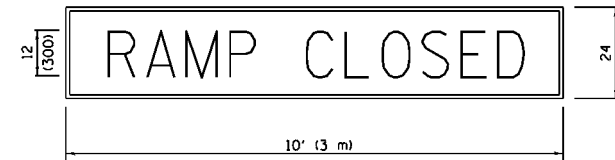
SYMBOLS

- ⊥ TYPE II BARRICADE OR DRUM WITH STEADY BURN MONO-DIRECTIONAL LIGHT
- ⊓ TYPE III BARRICADE WITH 2 FLASHING LIGHTS



DETAIL FOR REQUIRED BARRICADES & SIGNS

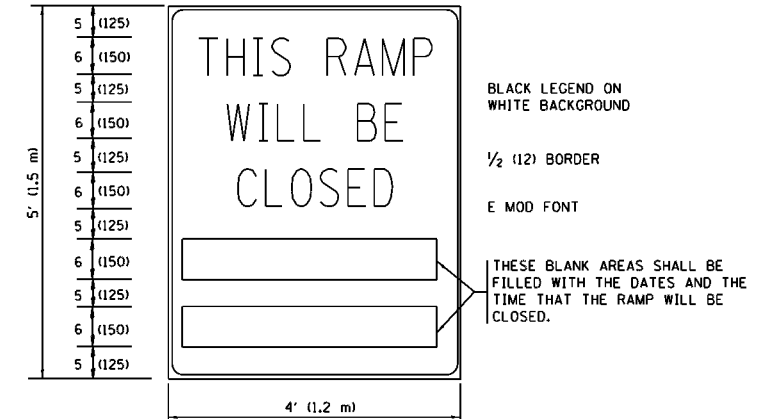
RAMP CLOSURE ADVANCE WARNING SIGN



BLACK LEGEND ON ORANGE BACKGROUND MOUNTED DIAGONALLY
E MOD FONT
1 (25) BORDER

THESE SIGNS ARE REQUIRED ON ALL THE EXIT GUIDE SIGNS FOR EXIT RAMPS THAT WILL BE CLOSED FOR MORE THAN FOUR (4) CONSECUTIVE DAYS.

RAMP CLOSURE ADVANCE INFORMATION SIGN



BLACK LEGEND ON WHITE BACKGROUND

1/2 (12) BORDER

E MOD FONT

THESE BLANK AREAS SHALL BE FILLED WITH THE DATES AND THE TIME THAT THE RAMP WILL BE CLOSED.

THESE SIGNS ARE REQUIRED ON BOTH SIDES OF THE RAMP, MINIMUM OF 1 WEEK IN ADVANCE OF THE CLOSURE.

THESE SIGNS SHALL BE FABRICATED AND PAID FOR ACCORDING TO THE TEMPORARY INFORMATION SIGNING SPECIAL PROVISION

GENERAL NOTES:

- ① CONES MAY BE SUBSTITUTED FOR DRUMS OR TYPE II BARRICADES DURING DAY OPERATIONS. CONES SHALL BE A MINIMUM OF 28 (700) HIGH.
- ② STEADY BURN LIGHTS WILL NOT BE REQUIRED FOR DAY OPERATIONS.
- ③ A FLAGGER SHALL BE POSITIONED AT EACH CLOSED RAMP THAT IS OPEN TO CONSTRUCTION VEHICLES, PRECEDED BY A W20-7 FLAGGER WARNING SIGN.
- ④ ALL ROUTE MARKERS AND TRAILBLAZER ASSEMBLIES WHICH DIRECT MOTORISTS TO A CLOSED ENTRANCE RAMP SHALL BE COVERED WHEN THE RAMP IS CLOSED FOR MORE THAN FOUR (4) DAYS.
- ⑤ THE SIGNING AND BARRICADING WHICH IS REQUIRED BY THIS DETAIL SHALL BE INCLUDED IN THE COST OF TRAFFIC CONTROL AND PROTECTION (EXPRESSWAYS).
- ⑥ AUTHORIZATION FROM THE DISTRICT'S BUREAU OF TRAFFIC IS REQUIRED FOR ALL RAMP CLOSURES.
- ⑦ THE RAMP CLOSURE ADVANCE INFORMATION SIGNS SHALL BE ERECTED IF THE CLOSURE TIME EXCEEDS TWENTY-FOUR (24) HOURS. ADDITIONAL ADVANCE WARNING SIGNS ON EXIT GUIDE SIGNING WILL BE REQUIRED FOR EXIT RAMP CLOSURES THAT EXCEED FOUR (4) DAYS IN LENGTH.
- ⑧ ROAD CONSTRUCTION AHEAD SIGNS MAY BE OMITTED WHEN THIS DETAIL IS USED IN CONJUNCTION WITH OTHER TRAFFIC CONTROL THAT ALREADY INCLUDES A ROAD CONSTRUCTION AHEAD SIGN.
- ⑨ ARTERIAL ROAD CONSTRUCTION AHEAD SIGNS SHALL BE INSTALLED ON THE LEFT SIDE OF TRAFFIC IF THE MEDIAN IS MORE THAN 10 FT WIDE.

ALL DIMENSIONS ARE IN INCHES (MILLIMETERS) UNLESS OTHERWISE SHOWN.

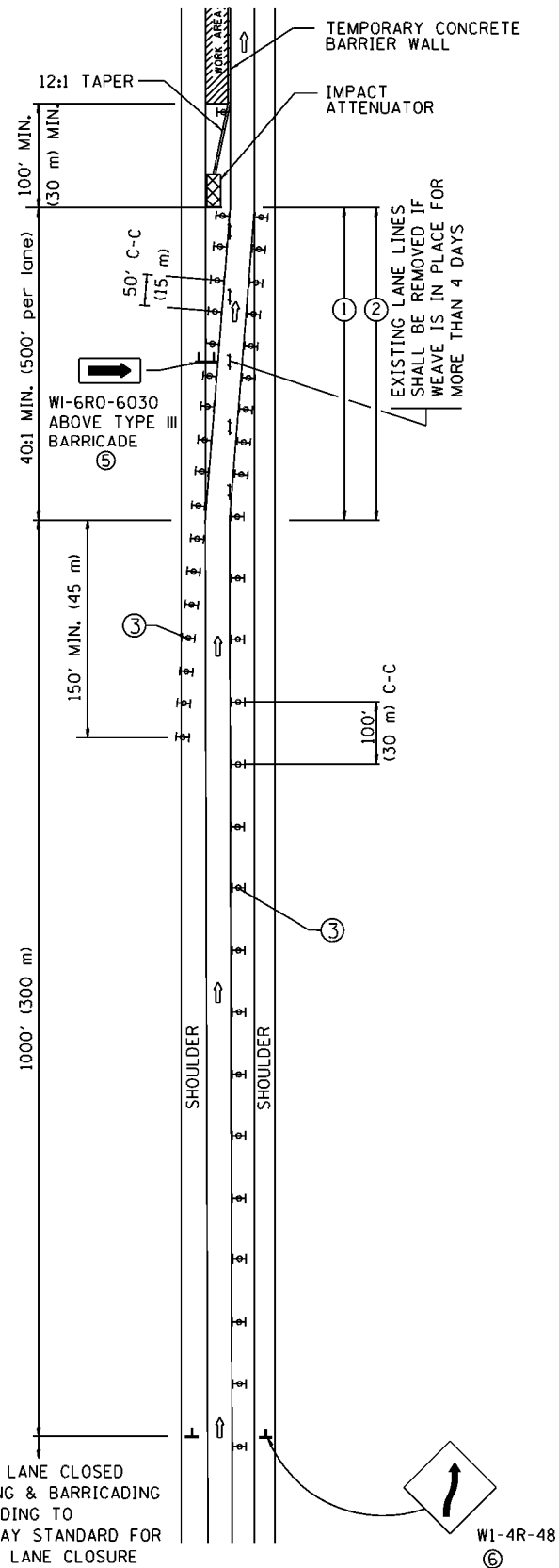
FILE NAME =	USER NAME = gorenautab	DESIGNED - DWS	REVISED - JAF 02-06
p:\IL\084EBID\INTEG\illinois.gov\PI\DOT\Documents\DOT Offices\District 1\Projects\DI29\BID\Design\Diststd.dgn		CHECKED -	REVISED - SPB 01-07
		DATE - 02-83	REVISED - SPB 12-09
			REVISED - MD 06-13

STATE OF ILLINOIS
DEPARTMENT OF TRANSPORTATION

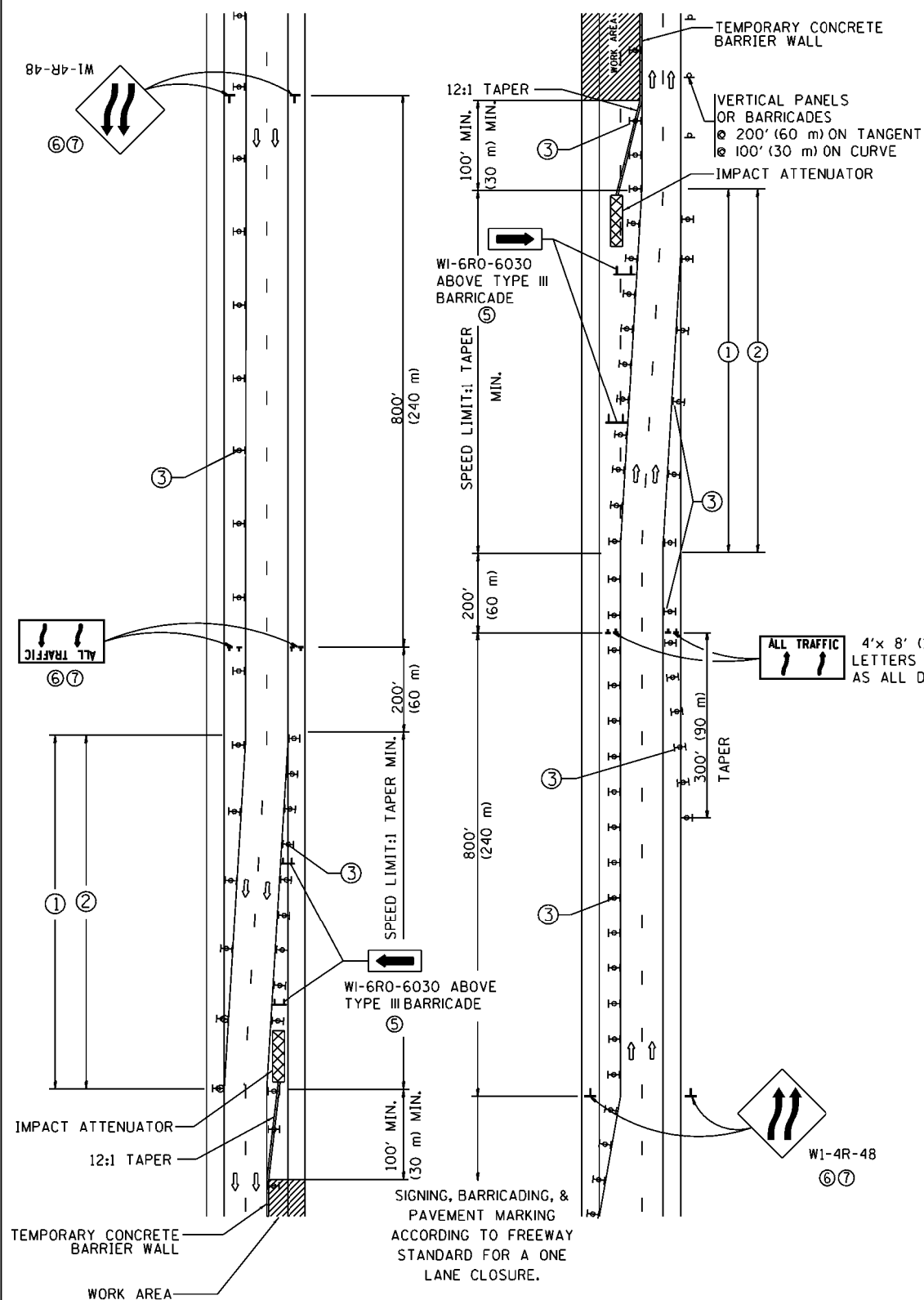
ENTRANCE AND EXIT RAMP CLOSURE DETAILS		SCALE: NONE	SHEET NO. 1 OF 1 SHEETS	STA. TO STA.
---	--	-------------	-------------------------	--------------

F.A.I. RTE.	SECTION	COUNTY	TOTAL SHEETS	SHEET NO.
55	2016-007-1	WILL	24	20
TC-08		CONTRACT NO. 62C20		
FED. ROAD DIST. NO. 1 ILLINOIS FED. AID PROJECT				

SINGLE LANE WEAVE



MULTI-LANE WEAVE



GENERAL NOTES

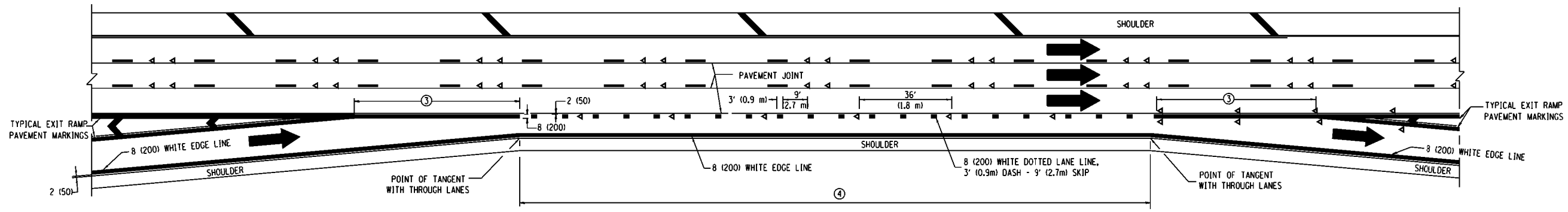
- ① EXISTING CONFLICTING PAVEMENT MARKING LINES SHALL BE REMOVED. PAVEMENT MARKING REMOVAL SHALL NOT BE REQUIRED FOR SINGLE LANE WEAVES UNDER 4 DAYS IN DURATION.
- ② CONTINUOUS REFLECTIVE TEMPORARY PAVEMENT MARKING TAPE SHALL BE PLACED THROUGHOUT THE TAPER AND FOR 300' (90 m) ALONG SIDE THE WORK AREA WHERE THE CLOSURE TIME IS GREATER THAN FOURTEEN DAYS. THE LEFT EDGE LINE SHALL BE YELLOW AND THE RIGHT EDGE LINE SHALL BE WHITE. FOR MULTI-LANE WEAVES LANE LINES SHALL BE 5 INCH, 10'-30' (3 m-9 m) SKIP DASH, WHITE.
- ③ PLASTIC DRUMS WITH STEADY BURN LIGHTS AT 50' (15 m) C-C SPACING IN TAPERS AND 100' (30 m) C-C SPACING IN TANGENTS.
- ④ ALL SIGNS SHALL BE POST MOUNTED IF THE CLOSURE TIME EXCEEDS FOUR DAYS.
- ⑤ TYPE III BARRICADES MAY BE OMITTED FOR SINGLE-LANE WEAVES UNDER 24-HOURS IN DURATION. W1-6 SIGNS WILL STILL BE REQUIRED. IF THE WIDTH OF OFFSET IS LESS THAN 6' THEN THE TYPE III BARRICADE WITH ATTACHED ARROW SIGN PANEL CAN BE ELIMINATED IN THE TAPER AREAS.
- ⑥ WHEN THE LENGTH OF THE SHIFTED SEGMENT (DISTANCE BETWEEN WEAVE POINTS) IS LESS THAN 1500', DOUBLE REVERSE CURVE SIGNS (W24-1) SHOULD BE USED INSTEAD OF THE REVERSE CURVE (W1-4) SIGNS. ARROWS ON THE 4'X8' "ALL TRAFFIC" SIGNS SHALL BE THE SAME SHAPE.
- ⑦ THE NUMBER OF ARROWS ON THESE SIGNS SHALL MATCH THE NUMBER OF LANES OPEN TO TRAFFIC.

SYMBOLS

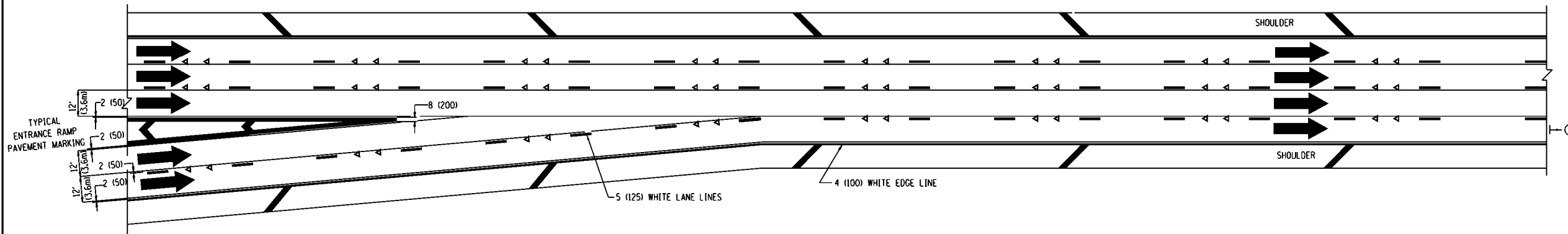
- DIRECTION OF TRAFFIC
- WORK AREA
- SIGN ON PORTABLE OR PERMANENT SUPPORT
- TYPE II BARRICADE OR DRUM WITH MONO-DIRECTIONAL STEADY BURNING LIGHT
- TEMPORARY CONCRETE BARRIER WALL
- IMPACT ATTENUATOR
- W1-4R-48
- W24-1-48

ALL DIMENSIONS ARE IN INCHES (MILLIMETERS) UNLESS OTHERWISE SHOWN

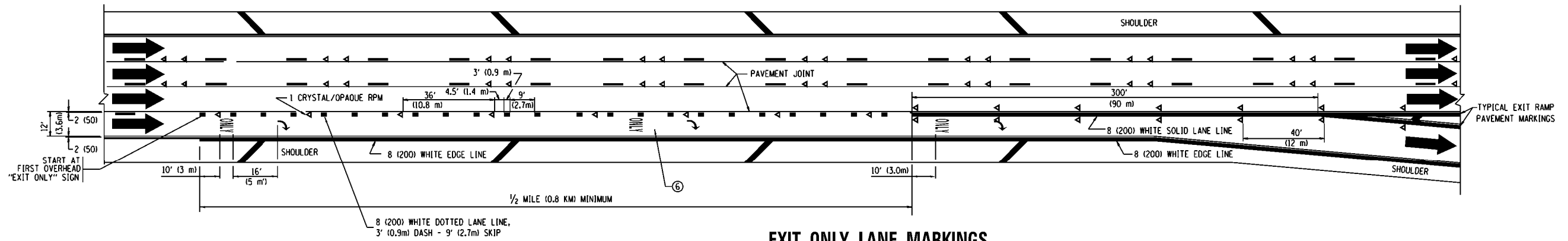
FILE NAME =	USER NAME = gorenautab	DESIGNED - DWS	REVISED - JAF 02-06	STATE OF ILLINOIS DEPARTMENT OF TRANSPORTATION	TRAFFIC CONTROL DETAILS FOR FREEWAY SINGLE & MULTI-LANE WEAVE			F.A.I. RTE.	SECTION	COUNTY	TOTAL SHEETS	SHEET NO.
p:\11084EBID\INTEG\illinois.gov\FWIDOT\Documents\IDOT Offices\District 1\Projects\DI299\BROWDetoDesign\Diststd.dgn			REVISED - SPB 01-07		55	2016-007-1	WILL	24	21			
PLOT SCALE = 100.0000' / 1in.	CHECKED -	REVISED - SPB 12-09			TC-09		CONTRACT NO. 62C20					
PLOT DATE = 3/31/2016	DATE - 02-87	REVISED - MD 06-13			SCALE: NONE	SHEET NO. 1 OF 1 SHEETS	STA. TO STA.	FED. ROAD DIST. NO. 1 ILLINOIS FED. AID PROJECT				



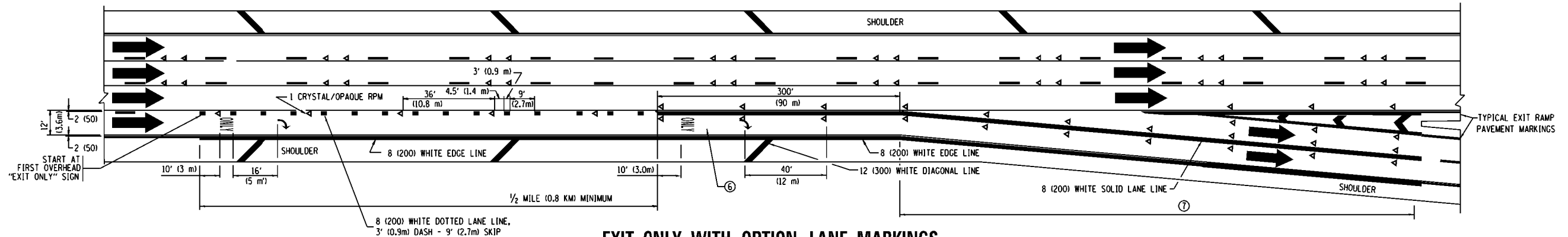
AUXILIARY LANE MARKINGS



TWO LANE ENTRANCE RAMP WITH MERGE MARKINGS



EXIT ONLY LANE MARKINGS

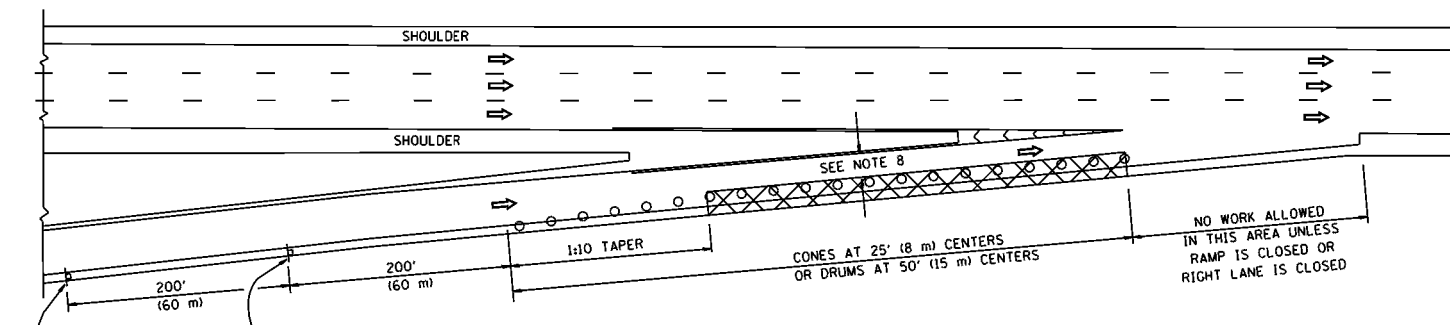


EXIT ONLY WITH OPTION LANE MARKINGS

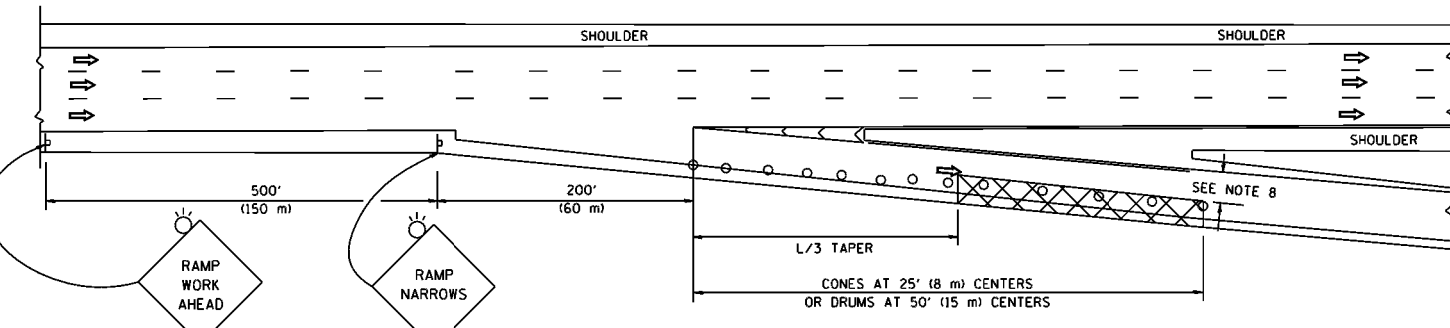
- NOTES**
- ③ OMIT WHEN LENGTH OF AUXILIARY LANE IS LESS THAN 500' (150 m).
 - ④ 8-INCH WIDE DOTTED LANE LINE MARKINGS SHALL BE USED WHEN THE LENGTH OF THE AUXILIARY LANE IS 2 MILES OR LESS.
 - ⑤ FOR TWO-LANE ENTRANCE RAMP, IF RIGHT LANE ENDS, USE TYPICAL ENTRANCE RAMP PAVEMENT MARKINGS.
 - ⑥ ONLY AND ARROWS EQUALLY SPACED, 500' (150 m) MAXIMUM SPACING. FULL SIZE LETTERS AND ARROW SHALL BE USED.
 - ⑦ CONTINUE 8" SOLID LANE LINE THROUGH EXIT TO END OF PAVED CORE.

FILE NAME =	USER NAME = gorengautab	DESIGNED - D.W.S.	REVISED - D.W.S. 07-96	STATE OF ILLINOIS DEPARTMENT OF TRANSPORTATION	MULTI-LANE FREEWAY PAVEMENT MARKING DETAILS			F.A.I. RTE.	SECTION	COUNTY	TOTAL SHEETS	SHEET NO.	
pw\NL084EBIDINTEG.illinois.gov\PI001\Documents\1001\Offices\District 1\Projects\012\BROW\012\Design\Diststd.dgn			REVISED - J.A.F. 02-06		SCALE: NONE	SHEET NO. 2 OF 2 SHEETS	STA.	TO STA.	55	2016-007-1	WILL	24	23
	PLOT SCALE = 99.7728' / in.	CHECKED -	REVISED - S.P.B. 01-07					TC-12		CONTRACT NO. 62C20			
	PLOT DATE = 3/31/2016	DATE - 01-90	REVISED - S.P.B. 01-10					FED. ROAD DIST. NO. 1 ILLINOIS FED. AID PROJECT					

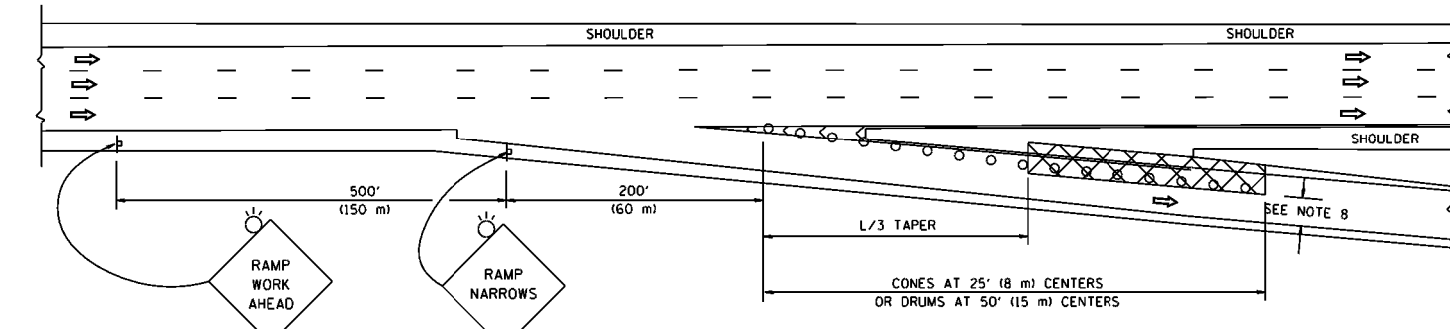
PARTIAL RAMP CLOSURE DETAILS



TYPICAL ENTRANCE RAMP



TYPICAL EXIT RAMP



TYPICAL EXIT RAMP

SYMBOLS

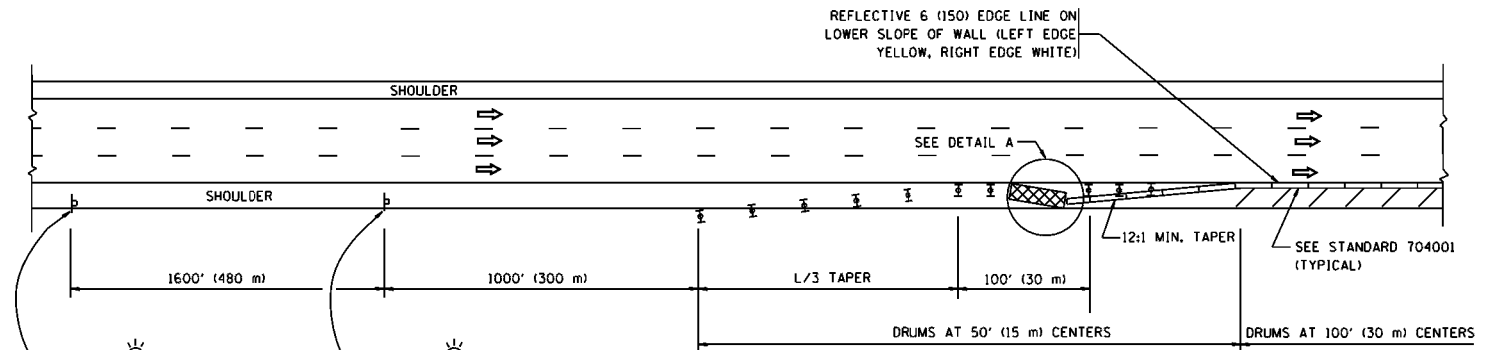
- ACTIVE WORK AREA
- SIGN ON PORTABLE OR PERMANENT SUPPORT
- FLAGGER WITH CONTROL SIGN
- TYPE II BARRICADE OR DRUM WITH STEADY BURN MONO-DIRECTIONAL LIGHT
- CONE, DRUM OR BARRICADE
- IMPACT ATTENUATOR OF TYPE AND TEST LEVEL SPECIFIED

GENERAL NOTES

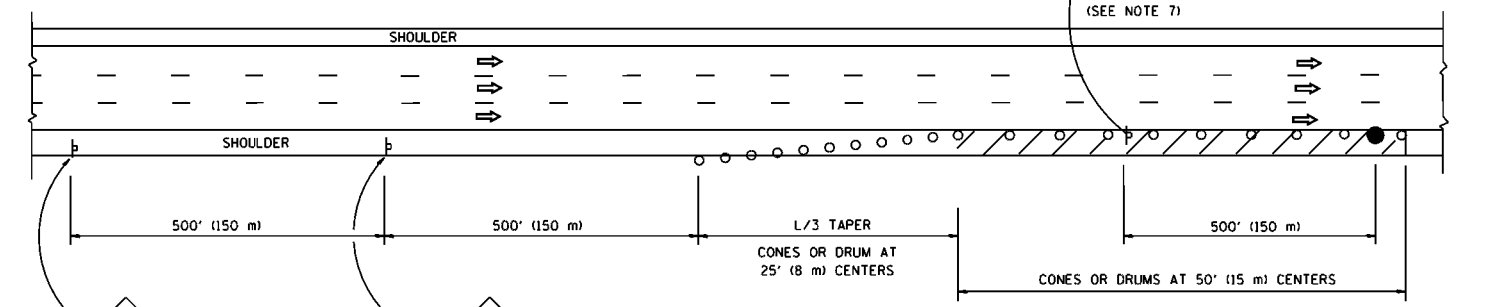
1. THE "L" DISTANCE EQUALS:

SPEED LIMIT	FORMULAS
45 mph (80 km/h) OR GREATER:	METRIC ENGLISH L=0.65(WXS) L=(WXS)
W = WIDTH OF OFFSET IN FEET (METERS) S = NORMAL POSTED SPEED MPH (KM/H)	
2. PLASTIC DRUMS WITH HIGH PERFORMANCE REFLECTIVE SHEETING AND STEADY BURNING LIGHTS ARE REQUIRED FOR ALL NIGHTTIME CLOSURES.
3. ALL SIGNS SHALL BE POST MOUNTED IF THE CLOSURE TIME EXCEEDS FOUR DAYS.
4. FLASHING LIGHTS SHALL BE USED DURING THE HOURS OF DARKNESS AND SHALL BE INSTALLED ABOVE THE FIRST TWO SETS OF SIGNS.

SHOULDER CLOSURE DETAILS

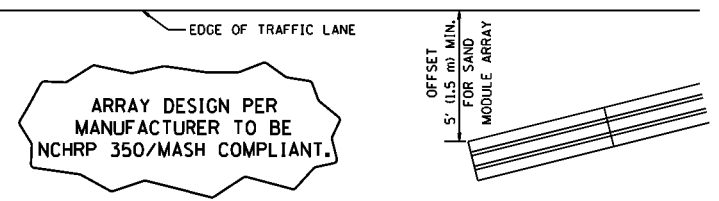


PERMANENT SHOULDER CLOSURE



DAYTIME SHOULDER CLOSURE

THIS DETAIL IS USED WHERE:
1. VEHICLES, EQUIPMENT, WORKERS OR THEIR ACTIVITIES ENCR OACH IN AN AREA CLOSER THAN 15' (4.5 m) TO THE EDGE OF PAVEMENT FOR A PERIOD IN EXCESS OF 15 MINUTES.



ARRAY DESIGN PER MANUFACTURER TO BE NCHRP 350/MASH COMPLIANT.

DETAIL "A"
IMPACT ATTENUATOR, TEMPORARY
(SEE NOTE 5)

5. THE IMPACT ATTENUATOR, TEMPORARY IS NOT REQUIRED WHEN THE TEMPORARY CONCRETE BARRIER WALL IS PROTECTED BY OR IS TIED INTO THE EXISTING GUARDRAIL. IF OFFSET IS LESS THAN 5 FEET USE NARROW USE TYPE DEVICE TO MEET NCHRP350/MASH.
6. AUTHORIZATION FROM THE DISTRICT'S BUREAU OF TRAFFIC IS REQUIRED FOR ALL FREEWAY CLOSURES.
7. THE FLAGGER AND FLAGGER SIGN ARE REQUIRED AT THE ABOVE WORK SITES WHEN:
 - a. FOUR OR MORE WORK VEHICLES ENTER THE TRAFFIC LANES IN A ONE HOUR PERIOD.
 - b. THE WORK AVTIVITY REQUIRES FREQUENT ENCR OACHMENT INTO THE LANE OPEN TO TRAFFIC.
 THE FLAGGER SHALL BE STATIONED APPROXIMATELY 100' (30 m) TO 200' (60 m) IN ADVANCE OF THE WORKERS.
8. 12' MIN. WIDTH TANGENT SECTION
16' MIN. WIDTH CURVE SECTION.

ALL DIMENSIONS ARE IN INCHES (MILLIMETERS) UNLESS OTHERWISE SHOWN.

FILE NAME =	USER NAME = gorenautab	DESIGNED -	REVISED - J.A.F. 12-06	STATE OF ILLINOIS DEPARTMENT OF TRANSPORTATION	TRAFFIC CONTROL DETAILS FOR FREEWAY SHOULDER CLOSURES AND PARTIAL RAMP CLOSURES	F.A.I. RTE.	SECTION	COUNTY	TOTAL SHEETS	SHEET NO.	
			REVISED - S.P.B. 01-07			55	2016-007-1	WILL	24	24	
			REVISED - S.P.B. 12-09			TC-17		CONTRACT NO. 62C20			
			REVISED - M.D. 06-13			FED. ROAD DIST. NO. 1 ILLINOIS FED. AID PROJECT					
PLOT SCALE = 100.0000' / 1in.		CHECKED -	DATE - 11-96	SCALE: NONE	SHEET NO. 1 OF 1 SHEETS	STA.	TO STA.				