

1. COVER SHEET
2. GENERAL NOTES
- 3-4. SUMMARY OF QUANTITIES
5. TYPICAL SECTIONS
6. SCHEDULES
7. TRAFFIC CONTROL AND PROTECTION, STANDARD 701400
- 8-10. TRAFFIC CONTROL AND PROTECTION, STANDARD 701431
11. MISCELLANEOUS DETAILS
12. GENERAL PLAN AND ELEVATION FOR STRUCTURE NO 078-0001
13. SUPERSTRUCTURE DETAILS FOR STYRUCTURE NO. 078-0001

STANDARDS

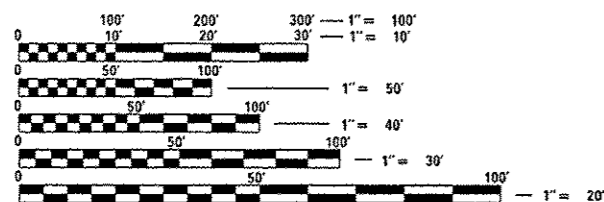
- | | |
|-----------|--|
| 000001-06 | STANDARD SYMBOLS, ABBREVIATIONS AND PATTERNS |
| 001001-02 | AREAS OF REINFORCEMENT BARS |
| 001006 | DECIMAL OF AN INCH AND OF A FOOT |
| 701101-05 | OFF-ROAD OPERATIONS, MULTILANE, 15' (4.5 m) TO 24' (600 mm) FROM PAVEMENT EDGE |
| 701401-09 | LANE CLOSURE, FREEWAY/EXPRESSWAY |
| 701426-08 | LANE CLOSURE, MULTILANE INTERMITTENT OR MOVING OPERATION, FOR SPEEDS ≥ 45 MPH |
| 701428-01 | TRAFFIC CONTROL, SETUP AND REMOVAL, FREEWAY/EXPRESSWAY |
| 701901-05 | TRAFFIC CONTROL DEVICES |
| 701431-11 | LANE CLOSURE, MULTILANE UNDIV. WITH CROSSOVER, FOR SPEEDS > 45 MPH TO 55 MPH |

STATE OF ILLINOIS
DEPARTMENT OF TRANSPORTATION
DIVISION OF HIGHWAYS
PROPOSED
HIGHWAY PLANS

FAI 180 (I-180)
(06-3, 078-1)MBPM-4
WEARING SURFACE REMOVAL AND REPLACEMENT
PUTNAM COUNTY
C-93-018-16

PROJECT LOCATION

STRUCTURE NUMBER 078-0001
CARRYING FAI 180 (I-180)
OVER THE ILLINOIS RIVER
1.82 MILES EAST OF IL 26
AT HENNEPIN



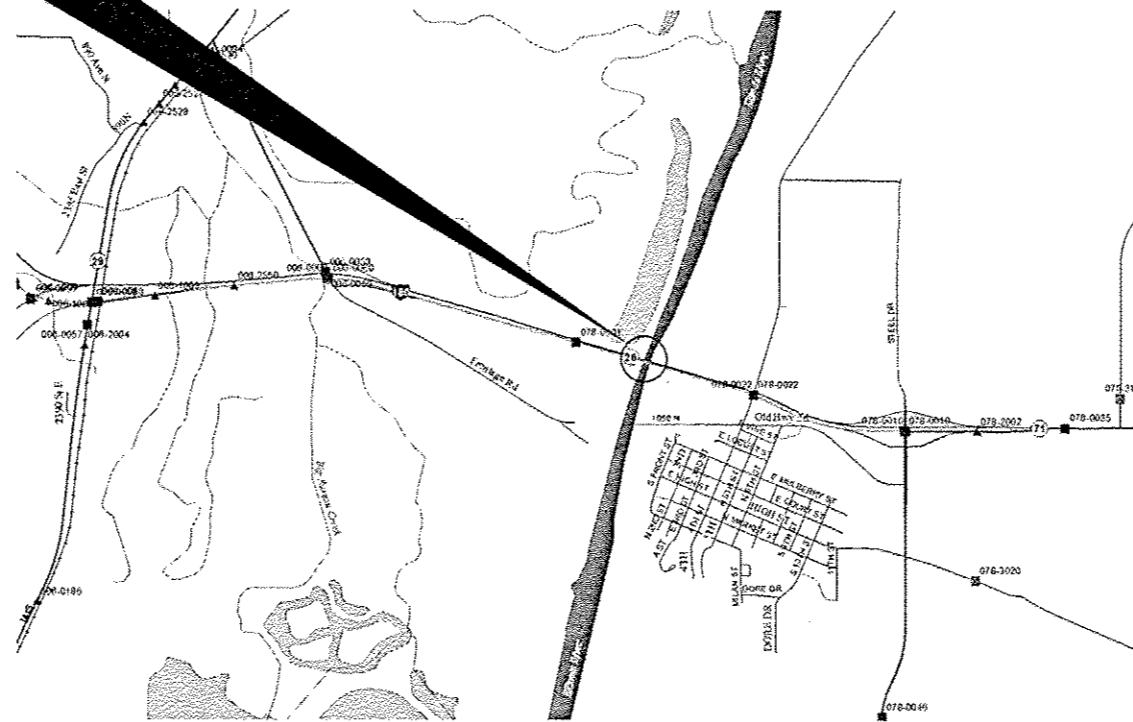
FULL SIZE PLANS HAVE BEEN PREPARED USING STANDARD ENGINEERING SCALES. REDUCED SIZED PLANS WILL NOT CONFORM TO STANDARD SCALES. IN MAKING MEASUREMENTS ON REDUCED PLANS, THE ABOVE SCALES MAY BE USED.

J.U.L.I.E.
JOINT UTILITY LOCATION INFORMATION FOR EXCAVATION
1-800-892-0123
OR 811

DISTRICT 3 (815) 434-6131

PROJECT ENGINEER JOE KANNEL P.E.
UNIT CHIEF RON WOODSHANK

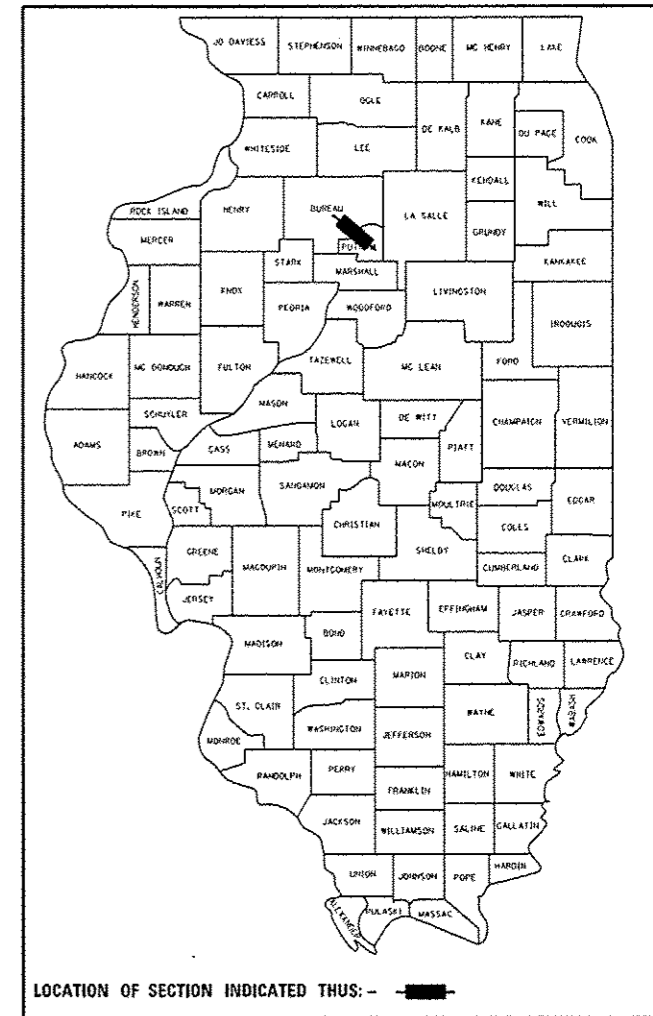
CONTRACT NO. 66F10



POINT LOCATION
LOCATION MAP NOT TO SCALE

F.A.I. RTE.	SECTION	COUNTY	TOTAL SHEETS	SHEET NO.
180	(06-3, 078-1)MBPM-4	PUTNAM	13	1
		ILLINOIS	CONTRACT NO. 66F10	

D-93-019-16



LOCATION OF SECTION INDICATED THUS: - [black rectangle] -

RURAL
INTERSTATE
FAI 80 (I-80)
2015

AOT	2500
P. V.	79.80%
S. U.	9.20%
M. U.	11.00%

STATE OF ILLINOIS
DEPARTMENT OF TRANSPORTATION
DIVISION OF HIGHWAYS

SUBMITTED March 24 2016
Paul Loeta P.E.
DEPUTY DIRECTOR OF HIGHWAYS, REGION ENGINEER

Maryle 2016
Maurice M. Addis P.E.
ENGINEER OF DESIGN AND ENVIRONMENT

Maryle 2016
Omer Osman P.E.
DIRECTOR OF HIGHWAYS/CHIEF ENGINEER

PRINTED BY THE AUTHORITY
OF THE STATE OF ILLINOIS

GENERAL NOTES

PLAN DIMENSIONS AND DETAILS RELATIVE TO EXISTING PLANS ARE SUBJECT TO ROUTINE VARIATIONS. THE CONTRACTOR SHALL FIELD VERIFY EXISTING DIMENSIONS AND DETAILS AFFECTING NEW CONSTRUCTION AND MAKE NECESSARY APPROVED ADJUSTMENT PRIOR TO CONSTRUCTION OR ORDERING OF MATERIALS. SUCH VARIATIONS SHALL NOT BE CAUSE FOR ADDITIONAL COMPENSATION FOR A CHANGE IN THE SCOPE OF THE WORK. HOWEVER, THE CONTRACTOR WILL BE PAID FOR THE QUANTITY FURNISHED BASED UPON THE UNIT BID FOR THE WORK.

FOR STABILIZATION, ALL TYPE III BARRICADES SHALL REQUIRE A MINIMUM OF FOUR SAND BAGS PER BARRICADE.

THE CONTRACTOR SHALL BE RESPONSIBLE FOR PROTECTING UTILITY PROPERTY FROM CONSTRUCTION OPERATIONS AS OUTLINED IN ARTICLE 107.31 OF THE STANDARD SPECIFICATIONS. THE "JULIE" NUMBER IS 1-800-892-0123. A MINIMUM OF FORTY-EIGHT (48) HOURS ADVANCE NOTICE IS REQUIRED.

WHERE SECTION OR SUBSECTION MONUMENTS ARE ENCOUNTERED, THE ENGINEER SHALL BE NOTIFIED BEFORE SUCH MONUMENTS ARE REMOVED. THE CONTRACTOR SHALL PROTECT AND CAREFULLY PRESERVE ALL MONUMENTS UNTIL AN AUTHORIZED SURVEYOR OR AGENT HAS WITNESSED OR OTHERWISE REFERENCED THEIR LOCATION. THE CONTRACTOR SHALL BE RESPONSIBLE FOR HAVING AN AUTHORIZED SURVEYOR REESTABLISH ANY SECTION OR SUBSECTION MONUMENTS DESTROYED BY HIS OPERATIONS.

ANY REFERENCE TO A STANDARD IN THESE PLANS SHALL BE INTERPRETED TO MEAN THE EDITION AS INDICATED BY THE SUBNUMBER LISTED ON THE INDEX OF SHEETS OR THE COPY OF THE STANDARD INCLUDED IN THESE PLANS.

COMMITMENTS

STATE OF ILLINOIS
DEPARTMENT OF TRANSPORTATION
DISTRICT THREE
AS BUILT INFORMATION

SUPERVISING CONSTRUCTION FIELD ENGINEER

RESIDENT ENGINEER / TECHNICIAN

START & END DATES
OF CONSTRUCTION:

INSPECTORS:

DATE: March 24, 2016

PREPARED BY: Dan Bonin
DISTRICT STUDIES & PLANS ENGINEER

EXAMINED BY: [Signature]
DISTRICT CONSTRUCTION ENGINEER

[Signature]
DISTRICT MATERIALS ENGINEER

[Signature]
DISTRICT OPERATIONS ENGINEER

STATE OF ILLINOIS
DEPARTMENT OF TRANSPORTATION

GENERAL NOTES

FILE NAME :	USER NAME : woodshank1	DESIGNED - RLW	REVISED -	STATE OF ILLINOIS DEPARTMENT OF TRANSPORTATION	GENERAL NOTES	F.A.I. RTE.	SECTION	COUNTY	TOTAL SHEETS	SHEET NO.	
p:\1\1084EBID\TEC\Illinois.gov\PI\DOT\Documents\DOT Offices\District 3\Projects\035	DRAWN Date\03\15\2016	REW-shi-details.dgn	REVISED -			180	06-3, 078-11MBPM-4	PUTNAM	13	2	
Default	PLOT SCALE : 100.0000' / in.	CHECKED - EP	REVISED -			CONTRACT NO. 66F10		ILLINOIS FED. AID PROJECT			
	PLOT DATE : 3/23/2016	DATE - 1/15/2016	REVISED -			SCALE:	SHEET 1 OF 1 SHEETS	STA.	TO STA.		

CODE NO.	ITEM	UNIT	TOTAL QUANTITY	CONSTR. CODE
				MBPM 100% STATE BRIDGE 0014 S. N. 078-0001
44000157	HOT-MIX ASPHALT SURFACE REMOVAL, 2"	sq yd	983	983
50300260	BRIDGE DECK GROOVING	SO YD	983	983
50300300	PROTECTIVE COAT	SO YD	983	983
67100100	MOBILIZATION	LSUM	1	1
70100800	TRAFFIC CONTROL AND PROTECTION, STANDARD 701401	LSUM	1	1
70300520	PAVEMENT MARKING TAPE, TYPE III 4"	FOOT	9352	9352
70300150	SHORT TERM PAVEMENT MARKING REMOVAL	SO FT	7160	7160
70400200	RELOCATE TEMPORARY CONCRETE BARRIER	FOOT	2060	2060
70600250	IMPACT ATTENUATORS, TEMPORARY (NON- REDIRECTIVE), TEST LEVEL 3	EACH	4	4
78001110	PAINT PAVEMENT MARKING - LINE 4"	FOOT	10078	10078
78001130	PAINT PAVEMENT MARKING - LINE 6"	FOOT	1954	1954
78300100	PAVEMENT MARKING REMOVAL	SO FT	4289	4289
X7010214	TRAFFIC CONTROL AND PROTECTION, STANDARD 701431 (SPECIAL)	EACH	1	1
X7010410	SPEED DISPLAY TRAILER	CAL MO	2	2
Z0004556	HOT-MIX ASPHALT SURFACE REMOVAL (DECK)	SO YD	983	983

14

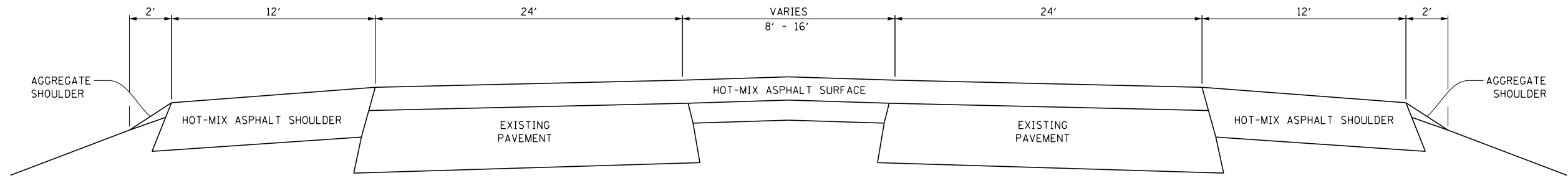
*SPECIALITY ITEMS

FILE NAME =	USER NAME = woodshark1	DESIGNED -	REVISED -	STATE OF ILLINOIS DEPARTMENT OF TRANSPORTATION	SUMMARY OF QUANTITIES	F.A.I. RTE. 180	SECTION 106-3, 078-1MBPM-4	COUNTY PUTNAM	TOTAL SHEETS 13	SHEET NO. 3		
Documents\DDG1 Offices\District 3\Projects\036	Documents\DDG1 Offices\District 3\Projects\036	DRAWN	REVISED			SCALE:	SHEET 1 OF 2 SHEETS	STA.	TO STA.	ILLINOIS FED. AID PROJECT		
PLOT SCALE = 180.0000 1 / in.	CHECKED -	REVISED -	CONTRACT NO. 66F10									
PLOT DATE = 3/23/2015	DATE -	REVISED -										

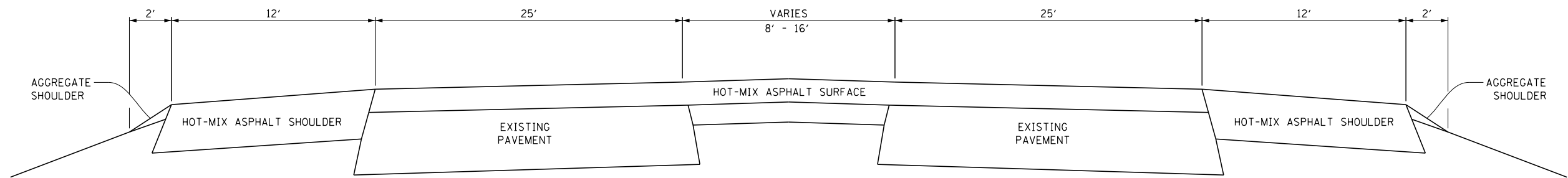
015 2: 22

CODE NO.	ITEM	UNIT	TOTAL QUANTITY	CONSTR. CODE
				MBPM 100% STATE BRIDGE 0014 S.N. 078-0001
Z0006016	BRIDGE DECK LATEX CONCRETE OVERLAY, 2 3/4 INCHES	SO YD	983	983
Z0012130	BRIDGE DECK SCARIFICATION 3/4"	SO YD	983	983
Z0030850	TEMPORARY INFORMATION SIGNING	SO FT	84	84

3



TYPICAL SECTION NO. 1
EAST OF THE ILLINOIS RIVER



TYPICAL SECTION NO. 2
WEST OF THE ILLINOIS RIVER

FILE NAME =	USER NAME = woodshankr1	DESIGNED -	REVISED -
p:\11\084EBIDINTEG\illinois.gov\PI\DOT\Documents\DOT Offices\District 3\Projects\0366F10\Drawings\B366F10-sht-details.dgn			
Default	PLOT SCALE = 100.0000' / 1in.	CHECKED -	REVISED -
	PLOT DATE = 3/23/2016	DATE -	REVISED -

STATE OF ILLINOIS
DEPARTMENT OF TRANSPORTATION

SUMMARY OF QUANTITIES			
SCALE:	SHEET 1 OF 1 SHEETS	STA.	TO STA.

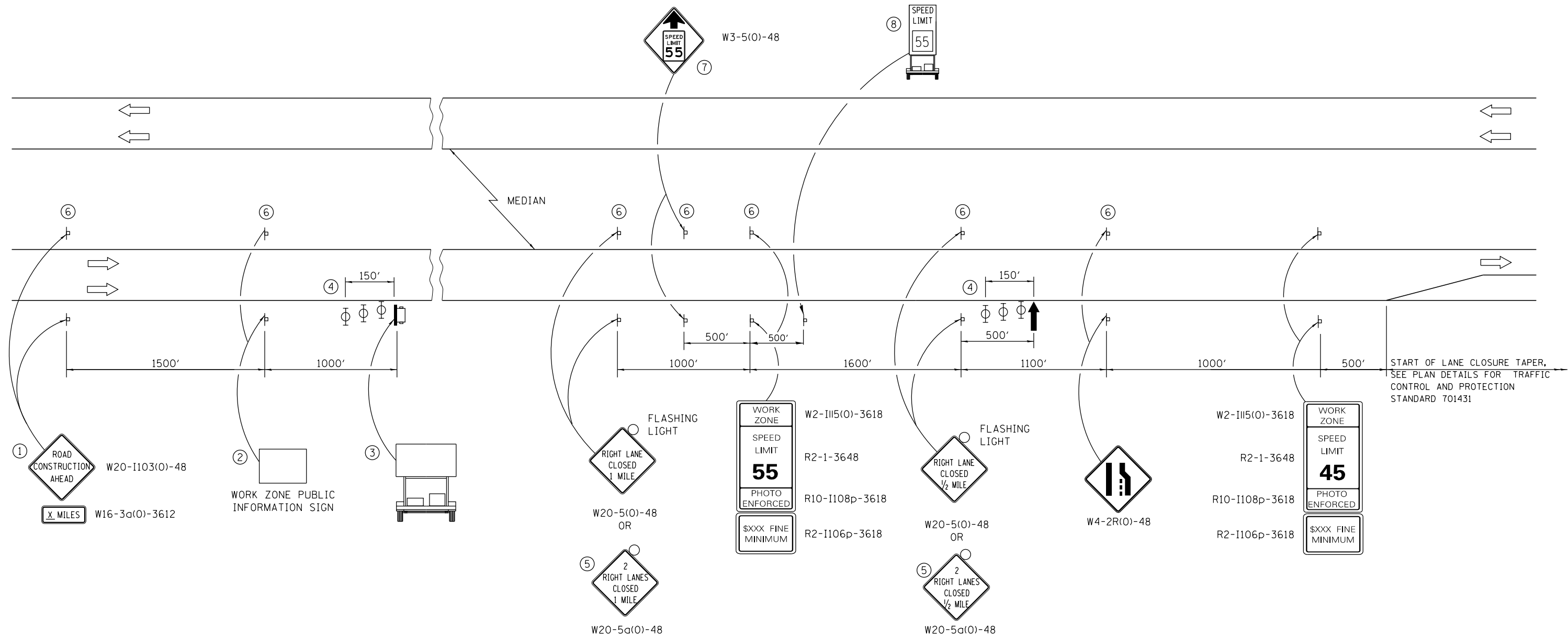
F.A.I. RTE.	SECTION	COUNTY	TOTAL SHEETS	SHEET NO.
180	(06-3, 078-1)MBPM-4	PUTNAM	13	5
CONTRACT NO. 66F10			ILLINOIS FED. AID PROJECT	

PAVEMENT MARKING SCHEDULE

LOCATION			PAVEMENT MARKING REMOVAL SQ FT	PAVEMENT MARKING TAPE TYPE III - 4"		WORK ZONE PAVEMENT MARKING REMOVAL SQ FT	PAINT PAVEMENT MARKING LINE - 4"		PAINT PAVEMENT MARKING LINE - 6"
				FOOT	YELLOW		WHITE	FOOT	
STA.	TO	STA.							
EASTBOUND LANES									
26+00	TO	36+00	125		1000	330			250
36+00	TO	45+71	442	971	971	641	971		243
45+71	TO	48+60	96		289	96			
84+22	TO	86+84	87		262	87	262		
SUBTOTALS			750	3493		1154	1233		493
WESTBOUND LANES									
44+00		45+71	78	171	171	113		171	43
45+71		46+87	53	232	116	115	116	116	29
46+87		48+60	79	346	173	172	173	173	44
48+60		50+16	123	312	312	206	156	156	39
50+16		80+98	2420			4070	3082	3082	771
80+98		84+22	255	648	648	428	324	324	81
84+22		86+94	214	544	272	270	272	272	68
86+94		87+50	26	56	56	37	56	56	14
87+50		90+00	114	250	250	165		250	63
90+00		102+36	155	1236		408			309
SUBTOTALS			3517	5793		5984	8779		1461
TOTALS			4267	9286		7138	10012		1954

CROSSOVER SCHEDULE

LOCATION	RELOCATE TEMPORARY CONCRETE BARRIER	IMPACT ATTENUATORS (NON-REDIRECTIVE) TEST LEVEL 3
	FOOT	EACH
STA. 44+46 TO STA. 49+76	1060	2
STA. 81+37 TO STA. 86+67	1060	2
TOTALS	2120	4



SYMBOLS

- ↑ ARROW BOARD
- ☐ PORTABLE CHANGEABLE MESSAGE SIGN
- ⊥ SIGN
- ⊕ TYPE II BARRICADE, DRUM, OR VERTICAL BARRICADE WITH MONODIRECTIONAL FLASHING LIGHT

- ① THE ROAD CONSTRUCTION AHEAD SIGN SHALL BE LOCATED 3 TO 5 MILES IN ADVANCE OF THE PROJECT LIMITS.
- ② THE MESSAGE AND SIZE OF THE WORK ZONE PUBLIC INFORMATION SIGN SHALL BE AS SPECIFIED BY THE DEPARTMENT.
- ③ THE MESSAGE BOARD SHALL BE USED TO DISPLAY STATUS OF LANES WITHIN THE PROJECT. THE PRIMARY MESSAGES SHALL BE:
 "RIGHT LANE CLOSED" / " X MILES AHEAD"
 "LEFT LANE CLOSED" / " X MILES AHEAD"
 "ALL LANES OPEN"
- ④ THREE, TYPE II BARRICADES, DRUMS, OR VERTICAL BARRICADES AT 50' (15 M) CENTERS.
- ⑤ THIS SIGN SHALL BE USED WHEN 2 LANES ARE CLOSED.
- ⑥ THIS SIGN SHALL BE OMITTED WHEN MEDIAN WIDTH IS LESS THAN 10' (3 M).
- ⑦ THIS SIGN SHALL ONLY BE USED IF THE EXISTING SPEED LIMIT IS GREATER THAN 65 MPH.
- ⑧ SEE SPECIAL PROVISION FOR "SPEED DISPLAY TRAILER"

GENERAL NOTES

THIS STANDARD IS USED WHERE AT ANY TIME A LANE IS CLOSED ON A FREEWAY/EXPRESSWAY. WHEN THE LEFT LANE IS CLOSED, LEFT LANE CLOSED SIGNS SHALL BE SUBSTITUTED FOR THE RIGHT LANE CLOSED SIGNS.

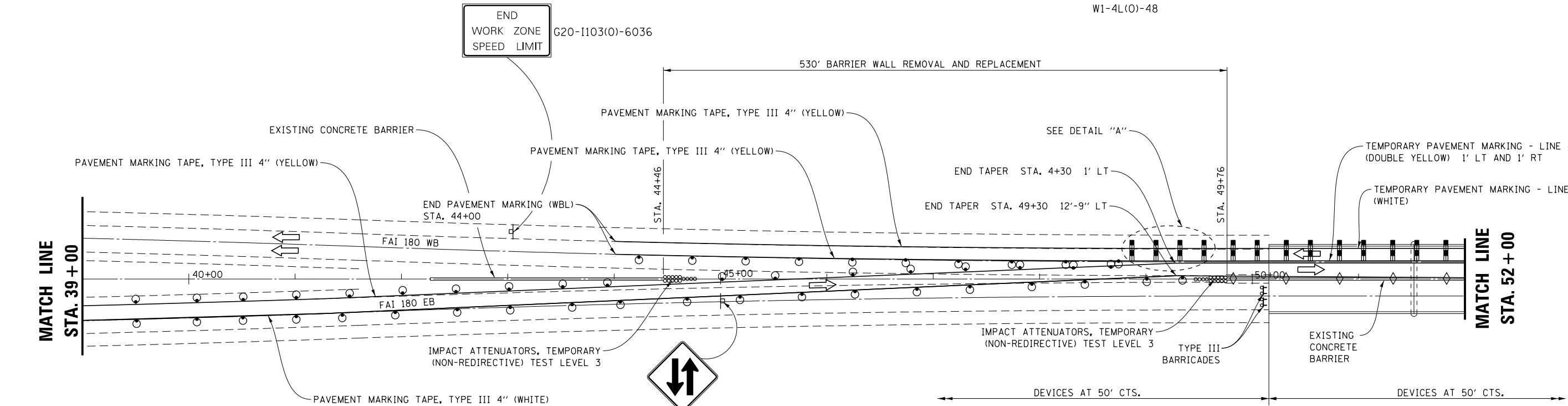
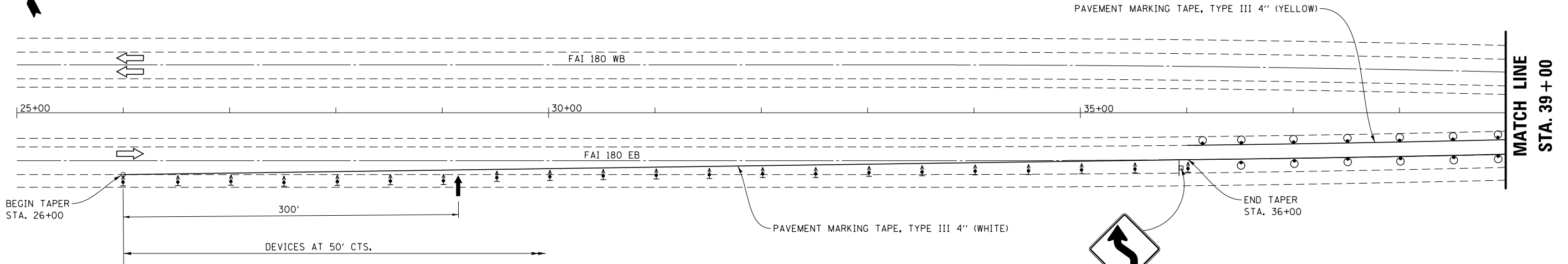
FILE NAME =	USER NAME = woodshankr1	DESIGNED -	REVISED -
pw:\IL\084EBIDINTEG\illinois.gov\PI\DOT\Documents\DOT Offices\District 3\Projects\0366F10-sht-details.dgn		REVISED -	
Default	PLOT SCALE = 100.0000' / in.	CHECKED -	REVISED -
	PLOT DATE = 3/23/2016	DATE -	REVISED -

**STATE OF ILLINOIS
DEPARTMENT OF TRANSPORTATION**



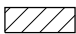





**TRAFFIC CONTROL AND PROTECTION,
STANDARD 701400**

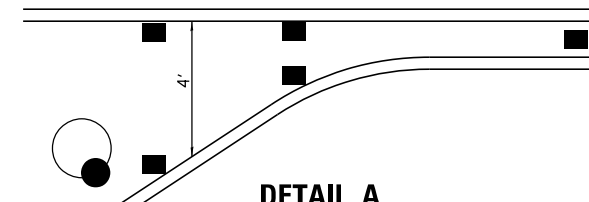
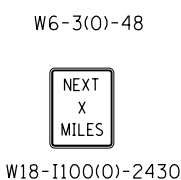
SCALE: SHEET 1 OF 1 SHEETS STA. TO STA.

F.A.I. RTE.	SECTION	COUNTY	TOTAL SHEETS	SHEET NO.
180	(06-3, 078-1)MBPM-4	PUTNAM	13	7
CONTRACT NO. 66F10			ILLINOIS FED. AID PROJECT	



SYMBOLS

-  ARROW BOARD
-  DIRECTION INDICATOR BARRICADE WITH STEADY BURN MONODIRECTIONAL LIGHT AT 50' CTS. THRU TAPER
-  WORK AREA
-  FLEXIBLE DELINEATORS AT 25' CENTERS COST INCLUDED WITH STANDARD 701431 (SPECIAL).
-  SIGN
-  TYPE III BARRICADE WITH FLASHING MONODIRECTIONAL LIGHTS
-  DRUM WITH STEADY BURN MONODIRECTIONAL LIGHT
-  IMPACT ATTENUATORS (NON-REDIRECTIVE) TEST LEVEL 3



DETAIL A
 BEGIN FLEXIBLE DELINEATORS WHERE LINES ARE APPROXIMATELY 4' APART. FLEXIBLE DELINEATORS AT 25' CENTERS FOR THE FIRST 250' AT EACH END OF THE TANGENT AND 50' CENTERS THEREAFTER.

GENERAL NOTES

THIS STANDARD IS USED WHERE AT ANY TIME, ANY VEHICLE, EQUIPMENT, WORKERS OR THEIR ACTIVITIES REQUIRE THE CLOSURE OF TWO ADJACENT LANES AND A TEMPORARY CROSSOVER IS PROVIDED BY MAKING USE OF ONE LANE OF PAVEMENT NORMALLY USED BY OPPOSING FLOW OF TRAFFIC AND FLEXIBLE DELINEATORS ARE USED TO SEPARATE THE OPPOSING TRAFFIC.

TRAFFIC CONTROL PLAN SHALL BE ACCORDING TO TRAFFIC CONTROL AND PROTECTION, STANDARD 701431 EXCEPT AS MODIFIED ON PLAN DETAILS. TRAFFIC CONTROL SHOWN ON PLAN DETAILS SHALL BE PAID FOR AS "TRAFFIC CONTROL AND PROTECTION, STANDARD 701431 (SPECIAL)".

SEE TRAFFIC CONTROL AND PROTECTION, STANDARD 701400 FOR ADVANCED SIGNING.

TEMPORARY PAVEMENT MARKING TAPE, TYPE III 4" AND TEMPORARY PAVEMENT MARKING - LINE 4" SHALL BE PAID FOR ACCORDING TO ARTICLE 703.07 OF THE STANDARD SPECIFICATIONS.

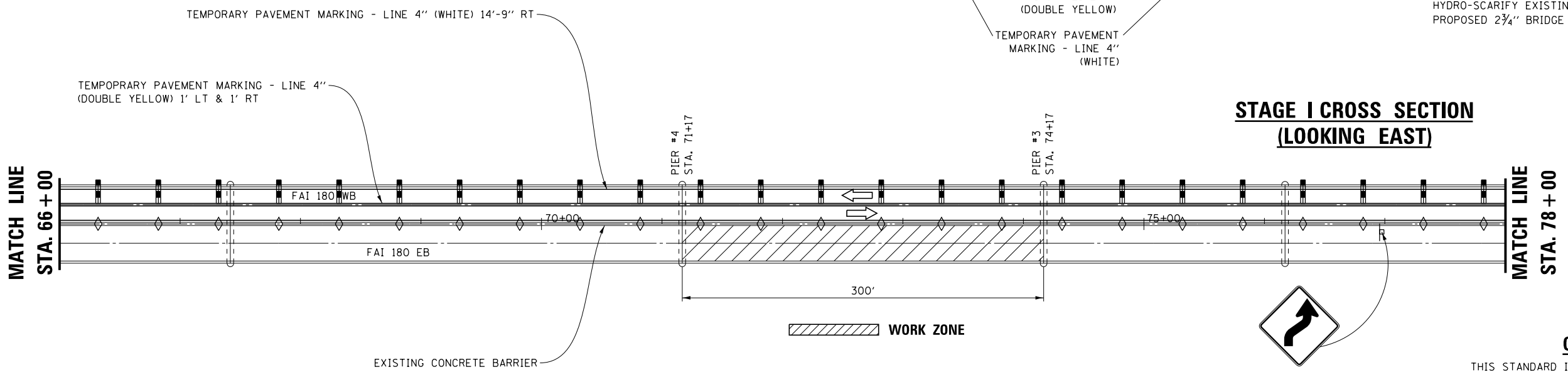
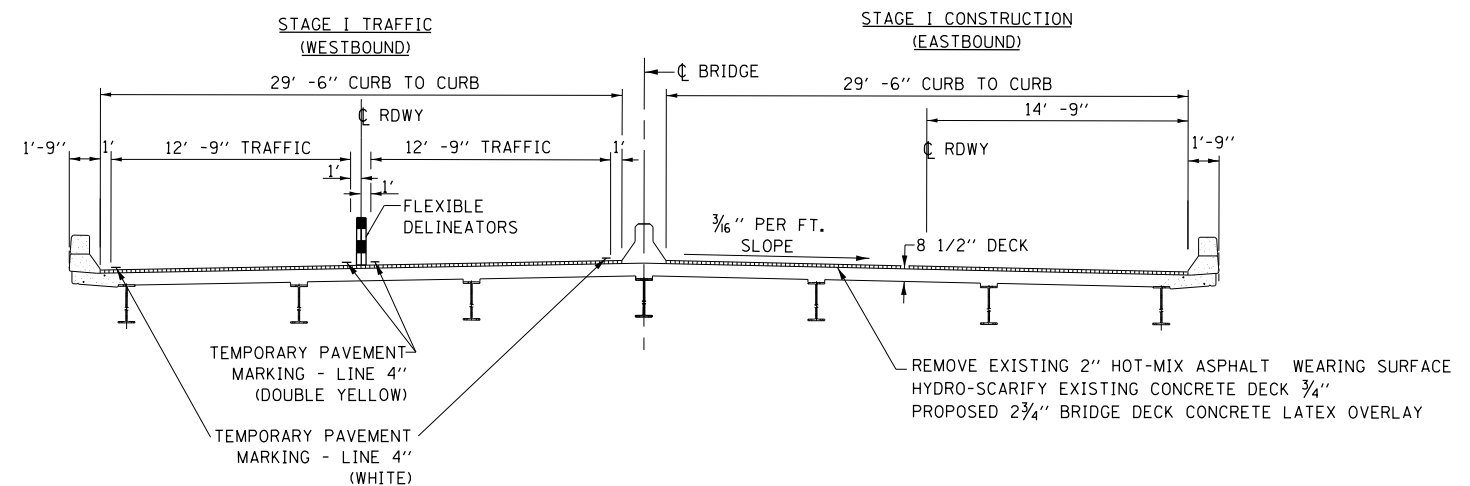
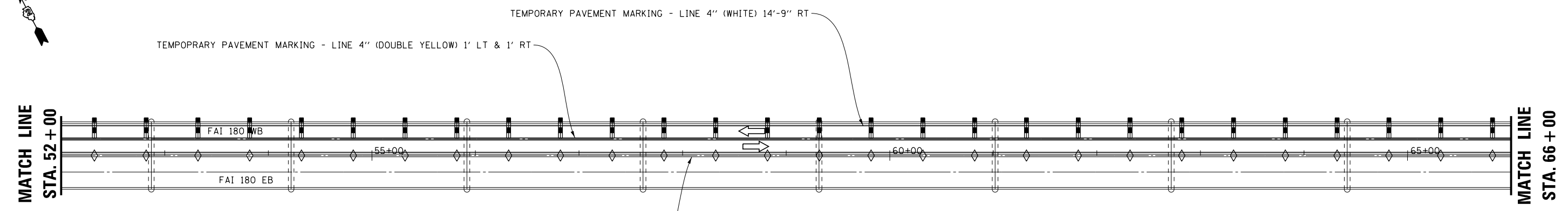
FILE NAME =	USER NAME = woodshankr1	DESIGNED -	REVISED -
pw\1\084EBIDINTEG.illinois.gov\PI\DOT\Documents\DOT Offices\District 3\Projects\0366\DRAWING\0366F10-sht-details.dgn		CHECKED -	REVISED -
Default	PLOT DATE = 3/23/2016	DATE -	REVISED -

**STATE OF ILLINOIS
 DEPARTMENT OF TRANSPORTATION**

**TRAFFIC CONTROL AND PROTECTION,
 STANDARD 701431 (SPECIAL)**

SCALE: SHEET 1 OF 3 SHEETS STA. TO STA.

F.A.I. RTE.	SECTION	COUNTY	TOTAL SHEETS	SHEET NO.
180	(06-3, 078-1)MBPM-4	PUTNAM	13	8
CONTRACT NO. 66F10			ILLINOIS FED. AID PROJECT	



**STAGE I CROSS SECTION
(LOOKING EAST)**



W1-4R(O)-48

SYMBOLS

- ARROW BOARD
- WORK AREA
- SIGN
- DRUM WITH STEADY BURN MONODIRECTIONAL LIGHT
- DIRECTION INDICATOR BARRICADE WITH STEADY BURN MONODIRECTIONAL LIGHT AT 50' CTS. THRU TAPER
- FLEXIBLE DELINEATORS AT 25' CENTERS FOR THE FIRST 250' AT EACH END OF THE TANGENT AND 50' CENTERS THEREAFTER.
- TYPE III BARRICADE WITH FLASHING MONODIRECTIONAL LIGHTS
- VERTICLE BARRICADES AT 50' CENTERS FOR THE FIRST 250' AT EACH END OF THE TANGENT AND 100' CENTERS THEREAFTER.

GENERAL NOTES

THIS STANDARD IS USED WHERE AT ANY TIME, ANY VEHICLE, EQUIPMENT, WORKERS OR THEIR ACTIVITIES REQUIRE THE CLOSURE OF TWO ADJACENT LANES AND A TEMPORARY CROSSOVER IS PROVIDED BY MAKING USE OF ONE LANE OF PAVEMENT NORMALLY USED BY OPPOSING FLOW OF TRAFFIC AND FLEXIBLE DELINEATORS ARE USED TO SEPARATE THE OPPOSING TRAFFIC.

TRAFFIC CONTROL PLAN SHALL BE ACCORDING TO TRAFFIC CONTROL AND PROTECTION, STANDARD 701431 EXCEPT AS MODIFIED ON PLAN DETAILS. TRAFFIC CONTROL SHOWN ON PLAN DETAILS SHALL BE PAID FOR AS "TRAFFIC CONTROL AND PROTECTION, STANDARD 701431".

SEE TRAFFIC CONTROL AND PROTECTION, STANDARD 701400 FOR ADVANCED SIGNING.

TEMPORARY PAVEMENT MARKING TAPE, TYPE III 4" AND TEMPORARY PAVEMENT MARKING - LINE 4" SHALL BE PAID FOR ACCORDING TO ARTICLE 703.07 OF THE STANDARD SPECIFICATIONS.

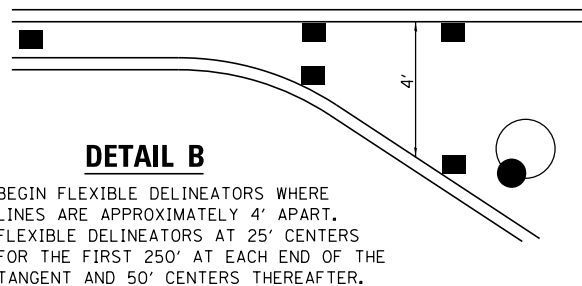
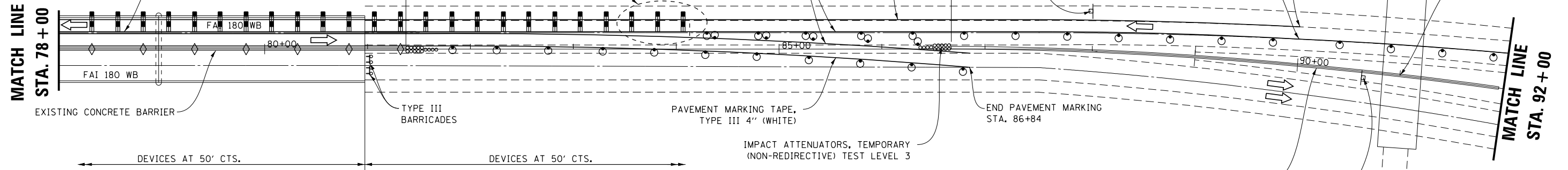
FILE NAME =	USER NAME = woodshankr1	DESIGNED -	REVISED -
pw\11084EBIDINTEG.illinois.gov\PIWIDOT\Documents\DOT Offices\District 3\Projects\0366F10\Drawings\0366F10-sht-details.dgn		REVISIONS	REVISED -
Default	PLOT SCALE = 100.0000' / in.	CHECKED -	REVISED -
	PLOT DATE = 3/23/2016	DATE -	REVISED -

**STATE OF ILLINOIS
DEPARTMENT OF TRANSPORTATION**

**TRAFFIC CONTROL AND PROTECTION,
STANDARD 701431**

SCALE: SHEET 2 OF 3 SHEETS STA. TO STA.

F.A.I. RTE.	SECTION	COUNTY	TOTAL SHEETS	SHEET NO.
180	(06-3, 078-1)MBPM-4	PUTNAM	13	9
				CONTRACT NO. 66F10
ILLINOIS FED. AID PROJECT				



SYMBOLS

- ARROW BOARD
- WORK AREA
- SIGN
- DRUM WITH STEADY BURN MONODIRECTIONAL LIGHT
- DIRECTION INDICATOR BARRICADE WITH STEADY BURN MONODIRECTIONAL LIGHT AT 50' CTS. THRU TAPER
- FLEXIBLE DELINEATORS AT 50' CENTERS FOR THE FIRST 250' AT EACH END OF THE TANGENT AND 100' CENTERS THEREAFTER.
- TYPE III BARRICADE WITH FLASHING MONODIRECTIONAL LIGHTS
- VERTICLE BARRICADES AT 50' CENTERS FOR THE FIRST 250' AT EACH END OF THE TANGENT AND 100' CENTERS THEREAFTER.

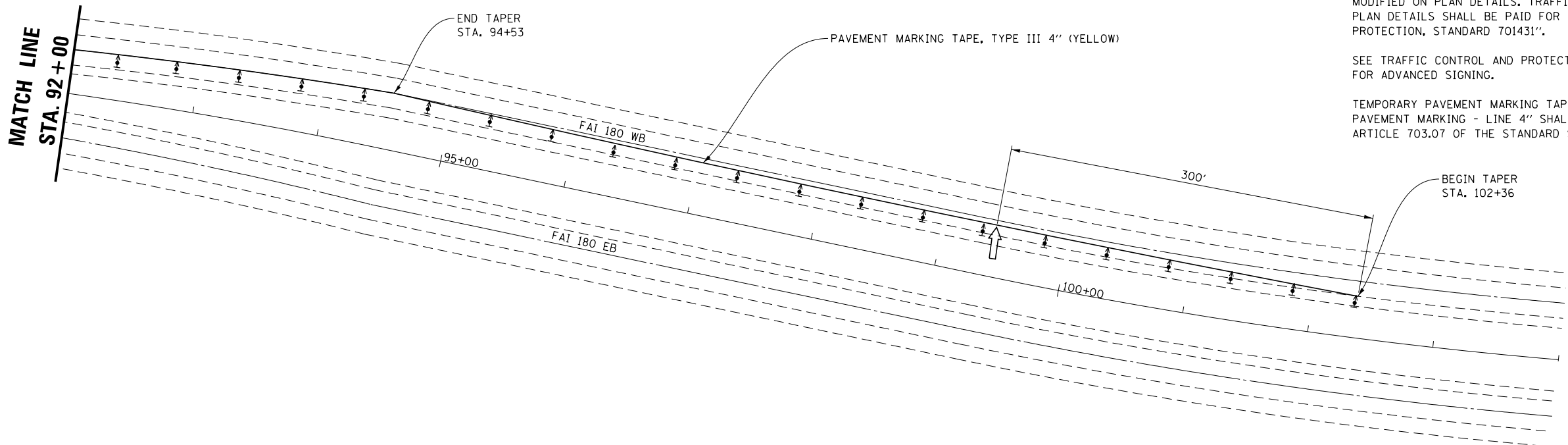
GENERAL NOTES

THIS STANDARD IS USED WHERE AT ANY TIME, ANY VEHICLE, EQUIPMENT, WORKERS OR THEIR ACTIVITIES REQUIRE THE CLOSURE OF TWO ADJACENT LANES AND A TEMPORARY CROSSOVER IS PROVIDED BY MAKING USE OF ONE LANE OF PAVEMENT NORMALLY USED BY OPPOSING FLOW OF TRAFFIC AND FLEXIBLE DELINEATORS ARE USED TO SEPARATE THE OPPOSING TRAFFIC.

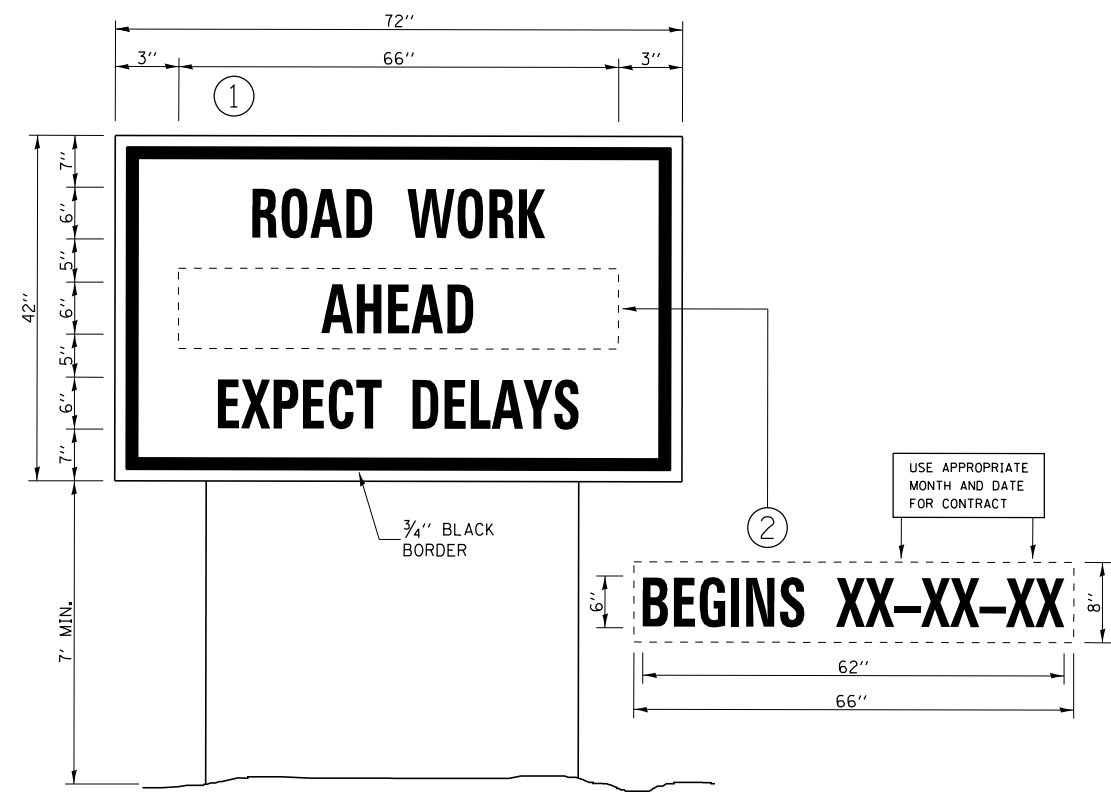
TRAFFIC CONTROL PLAN SHALL BE ACCORDING TO TRAFFIC CONTROL AND PROTECTION, STANDARD 701431 EXCEPT AS MODIFIED ON PLAN DETAILS. TRAFFIC CONTROL SHOWN ON PLAN DETAILS SHALL BE PAID FOR AS "TRAFFIC CONTROL AND PROTECTION, STANDARD 701431".

SEE TRAFFIC CONTROL AND PROTECTION, STANDARD 701400 FOR ADVANCED SIGNING.

TEMPORARY PAVEMENT MARKING TAPE, TYPE III 4" AND TEMPORARY PAVEMENT MARKING - LINE 4" SHALL BE PAID FOR ACCORDING TO ARTICLE 703.07 OF THE STANDARD SPECIFICATIONS.



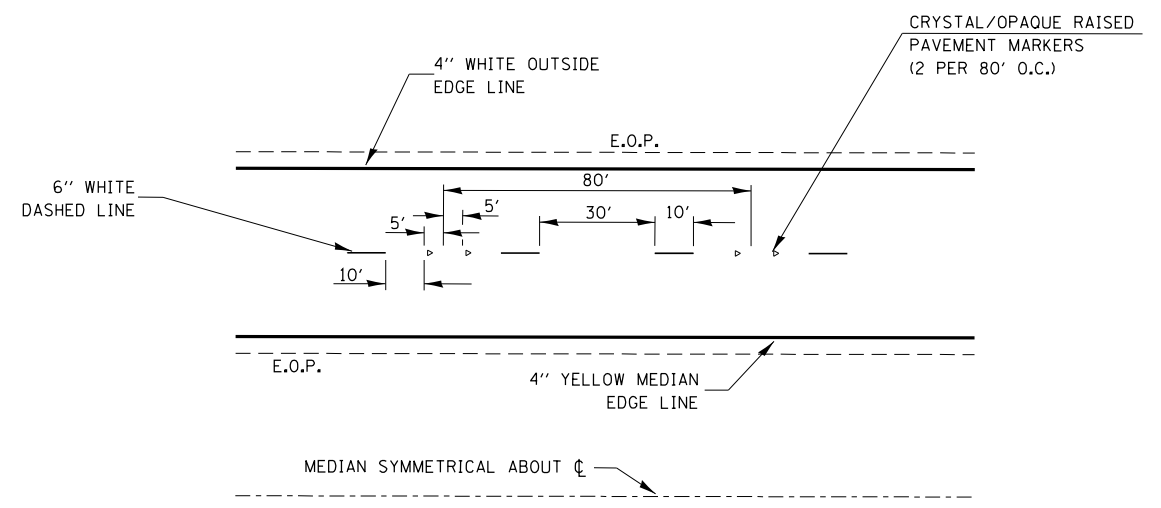
FILE NAME =	USER NAME = woodshankr1	DESIGNED -	REVISED -	STATE OF ILLINOIS DEPARTMENT OF TRANSPORTATION	TRAFFIC CONTROL AND PROTECTION, STANDARD 701431	F.A.I. RTE.	SECTION	COUNTY	TOTAL SHEETS	SHEET NO.
pw:\11084EBIDINTEG.illinois.gov\PI\DOT\Documents\DOT Offices\District 3\Projects\0366\DRAWING\0366F10-sht-details.dgn		CHECKED -	REVISED -			180	(06-3, 078-1)MBPM-4	PUTNAM	13	10
Default	PLOT SCALE = 100.0000' / in.	DATE -	REVISED -			CONTRACT NO. 66F10			ILLINOIS FED. AID PROJECT	
	PLOT DATE = 3/23/2016					SCALE:	SHEET 3 OF 3 SHEETS	STA.	TO STA.	



TEMPORARY INFORMATION SIGNING

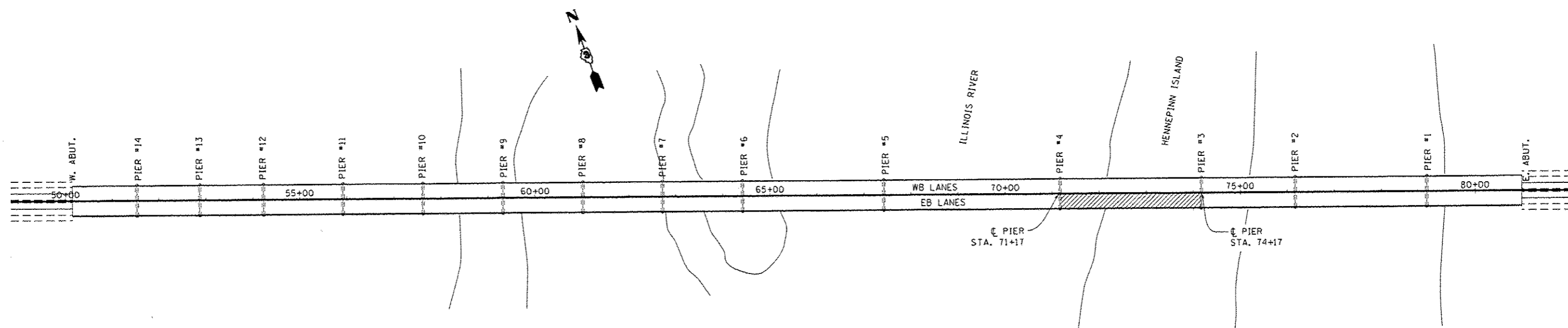
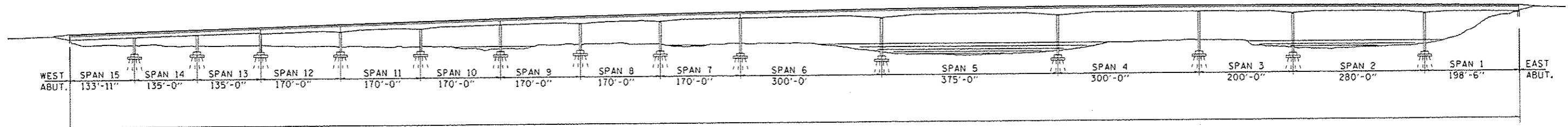
NOTES:

1. USE 6" D BLACK LETTERING ON FLOURESENT ORANGE BACKGROUND.
2. ERECT SIGNS AT LOCATIONS IN ADVANCE OF THE "ROAD CONSTRUCTION AHEAD" SIGNS AS DIRECTED BY THE ENGINEER.
3. ERECT SIGN ① WITH INSTALLED PANEL ② A MINIMUM OF ONE WEEK PRIOR TO THE START OF THE LANE CLOSURE.
4. REMOVE PANEL ② ON THAT DATE.
5. SEE SPECIAL PROVISION "TEMPORARY INFORMATION SIGNING" FOR ADDITIONAL INFORMATION.
6. WILL BE PAID FOR PER SO FT AS "TEMPORARY INFORMATION SIGNING". EACH SIGN = 21 SO FT AND THE DATE PANEL ② WILL NOT BE MEASURED SEPARATELY FOR PAYMENT.



TYPICAL PAVEMENT MARKINGS

FILE NAME =	USER NAME = woodshankr1	DESIGNED -	REVISED -	STATE OF ILLINOIS DEPARTMENT OF TRANSPORTATION	MISCELLANEOUS DETAILS	F.A.I. RTE.	SECTION	COUNTY	TOTAL SHEETS	SHEET NO.
pw:\IL\084EBIDINTEG.illinois.gov\PIWIDOT\Documents\IDOT Offices\District 3\Projects\0366F10\B366F10-sht-details.dgn	DRAWN	CHECKED -	REVISED -			180	(06-3, 078-1)MBPM-4	PUTNAM	13	11
Default	PLOT SCALE = 100.0000' / in.	DATE -	REVISED -			CONTRACT NO. 66F10			ILLINOIS FED. AID PROJECT	
	PLOT DATE = 3/23/2016	DATE -	REVISED -			SCALE:	SHEET 1 OF 1 SHEETS	STA.	TO STA.	



WORK ZONE

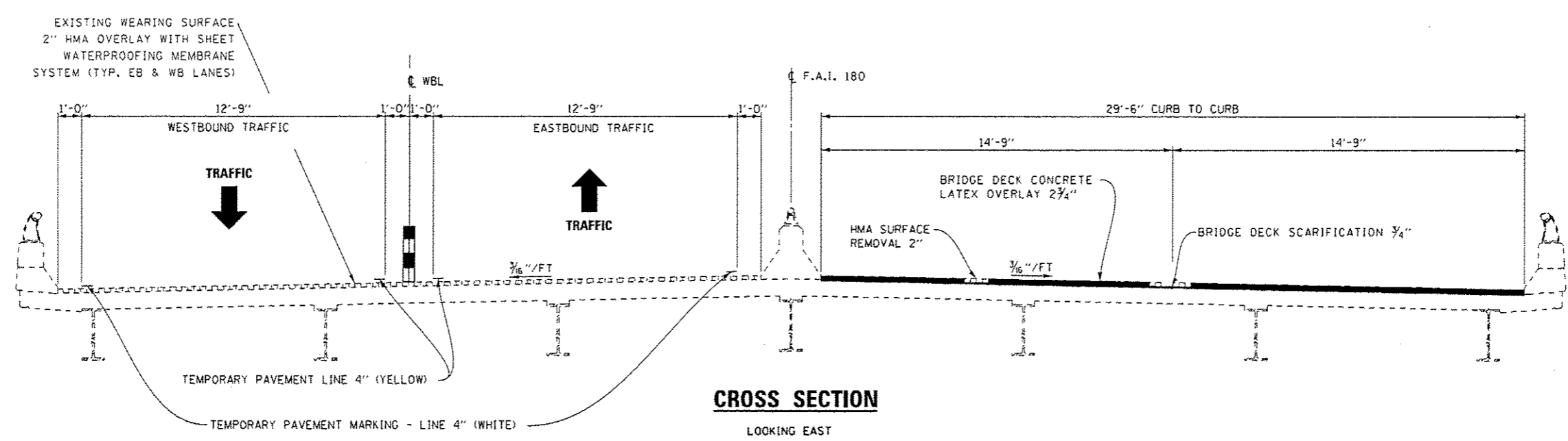


David Carl Puzey 5/3/16
Expires 11/30/16

TOTAL BILL OF MATERIAL

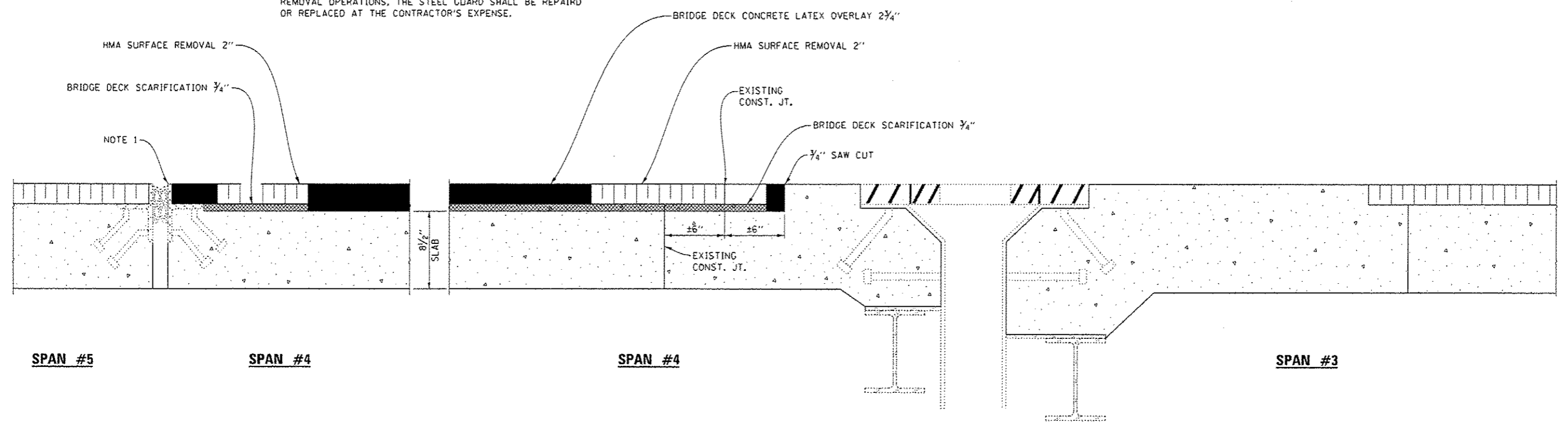
ITEM	UNIT	SUPER	SUB	TOTAL
HOT-MIX ASPHALT REMOVAL 2"	SQ YD	983		983
BRIDGE DECK SCARIFICATION 3/4"	SQ YD	983		983
BRIDGE DECK LATEX CONCRETE OVERLAY 2 3/4"	SQ YD	983		983
PROTECTIVE COAT	SQ YD	983		983
BRIDGE DECK GROOVING	SQ YD	954		954

FILE NAME =	USER NAME = woodshankr1	DESIGNED - RLW	REVISED -	STATE OF ILLINOIS DEPARTMENT OF TRANSPORTATION	GENERAL PLAN AND ELEVATION FOR STRUCTURE NO. 078-0001	F.A.I. RTE.	SECTION	COUNTY	TOTAL SHEETS	SHEET NO.	
Default	Documents\IDOT Offices\District 3\Projects\036666\036666.dgn	CHECKED - ATH	REVISED -			180	106-3, 078-11MBPM-4	PUTNAM	13	12	
	PLOT SCALE = 1/8" = 1'-0"	DATE -	REVISED -			CONTRACT NO. 66F10					
	PLOT DATE = 5/2/2016	DATE -	REVISED -			ILLINOIS FED. AID PROJECT					



CROSS SECTION
LOOKING EAST

NOTE 1:
EXISTING STEEL EXPANSION GUARD(S) SHALL REMAIN IN PLACE. IF THE STEEL IS DAMAGED DURING THE CONTRACTOR'S REMOVAL OPERATIONS, THE STEEL GUARD SHALL BE REPAIRED OR REPLACED AT THE CONTRACTOR'S EXPENSE.



TREATMENT AT PIER #4

EXISTING PREFORMED JOINT SEAL EXPANSION JOINT

TREATMENT AT PIER #3

EXISTING FINGER EXPANSION JOINT

FILE NAME =	USER NAME = woodshankr1	DESIGNED -	REVISED -
p:\11\884EBID\INTEC\Illinois.gov\PIV\DOT\Documents\DOT Offices\District 2\Projects\0366\0366.dwg	PROJECT NO = 0366F10-shr-details.dgn	CHECKED -	REVISED -
		DATE -	REVISED -

STATE OF ILLINOIS
DEPARTMENT OF TRANSPORTATION

SUPERSTRUCTURE DETAILS
FOR STRUCTURE NO. 078-0001

F.A.I. RTE.	SECTION	COUNTY	TOTAL SHEETS	SHEET NO.
180	106-3, 078-11MBPM-4	PuTNAM	13	13
CONTRACT NO. 66F10			ILLINOIS FED. AID PROJECT	

SCALE: SHEET 1 OF 1 SHEETS STA. TO STA.