

STATE OF ILLINOIS
DEPARTMENT OF TRANSPORTATION

DIVISION OF HIGHWAYS

**PROPOSED
HIGHWAY PLANS**

F.A.P. ROUTE 332 (IL 1)
SECTION D3 AGGREGATE SHOULDERS 2016-3
KANKAKEE COUNTY

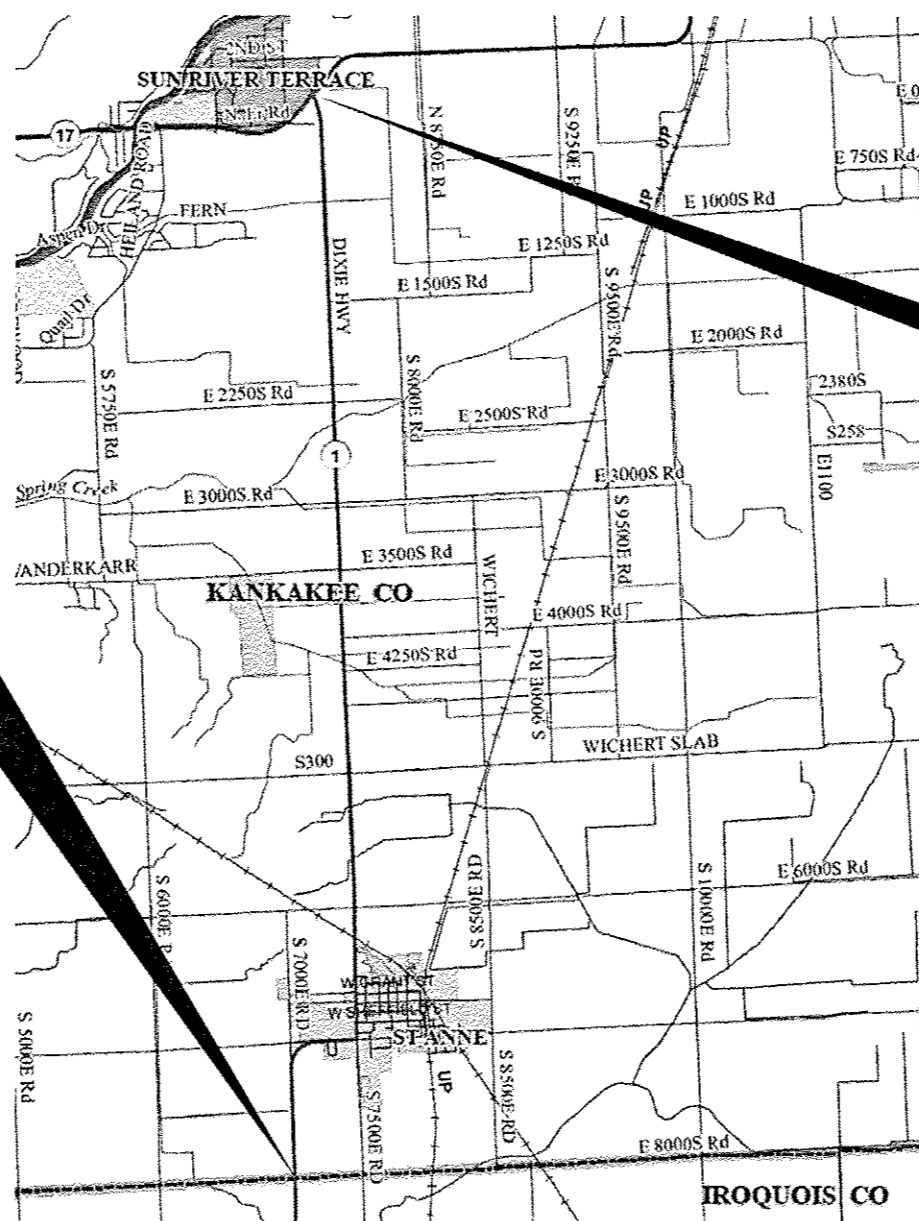
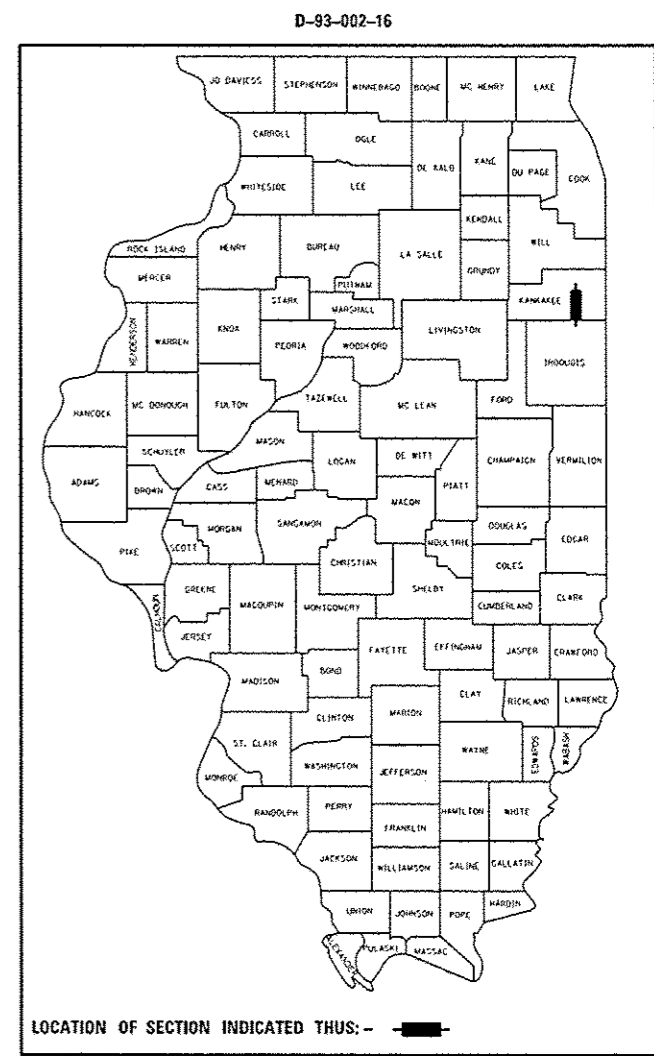
C-93-064-16

INDEX OF SHEETS

- COVER SHEET
- GENERAL NOTES
- SUMMARY OF QUANTITIES
- TYPICAL SECTIONS
- SCHEDULES
- DETAILS

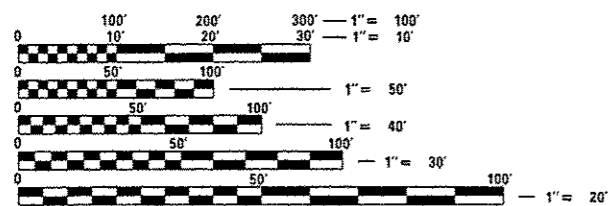
STANDARDS

000001-06	STANDARD SYMBOLS, ABBREVIATIONS AND PATTERNS
001006	DECIMAL OF AN INCH AND OF A FOOT
701006-05	OFF-ROAD OPERATIONS, 2L, 2W, 15' (4.5 m) TO 24" (600 mm) FROM PAVEMENT EDGE
701101-05	OFF-ROAD OPERATIONS, MULTILANE, 15' (4.5 m) TO 24" (600 mm) FROM PAVEMENT EDGE
701301-04	LANE CLOSURE, 2L, 2W, SHORT TIME OPERATIONS
701306-03	LANE CLOSURE, 2L, 2W, SLOW MOVING OPERATIONS DAY ONLY,
701901-05	TRAFFIC CONTROL DEVICES



IMPROVEMENT BEGINS
S. JUNCTION IL 1/7
(LM 0.00)

IMPROVEMENT ENDS
IROQUOIS COUNTY LINE
(LM 8.40)



FULL SIZE PLANS HAVE BEEN PREPARED USING STANDARD ENGINEERING SCALES. REDUCED SIZED PLANS WILL NOT CONFORM TO STANDARD SCALES. IN MAKING MEASUREMENTS ON REDUCED PLANS, THE ABOVE SCALES MAY BE USED.

J.U.L.I.E.
JOINT UTILITY LOCATION INFORMATION FOR EXCAVATION
1-800-892-0123
OR 811

PROJECT ENGINEER: JOE KANNEL
UNIT CHIEF: RON WOODSHANK

CONTRACT NO. 66F34

GROSS LENGTH = 44352 FT. = 8.40 MILE
NET LENGTH = 44352 FT. = 8.40 MILE

RURAL
OTHER ARTERIAL
FAP 332 (IL 1)
2015

ADT	4950
P.V.	86.87%
S.U.	8.08%
M.U.	5.05%

STATE OF ILLINOIS
DEPARTMENT OF TRANSPORTATION
DIVISION OF HIGHWAYS

SUBMITTED March 24 2016
Paul Loete REGIONAL ENGINEER

May 6 2016
Maureen M. Addis, P.E. ENGINEER OF DESIGN AND ENVIRONMENT

May 6 2016
Conor Conner, P.E. DIRECTOR OF HIGHWAYS/CHIEF ENGINEER

PRINTED BY THE AUTHORITY
OF THE STATE OF ILLINOIS

GENERAL NOTES

COMMITMENTS

PLAN DIMENSIONS AND DETAILS RELATIVE TO EXISTING PLANS ARE SUBJECT TO NOMINAL CONSTRUCTION VARIATIONS. THE CONTRACTOR SHALL FIELD VERIFY EXISTING DIMENSIONS AND DETAILS AFFECTING NEW CONSTRUCTION AND MAKE NECESSARY APPROVED ADJUSTMENTS PRIOR TO CONSTRUCTION OR ORDERING OF MATERIALS. SUCH VARIATIONS SHALL NOT BE CAUSE FOR ADDITIONAL COMPENSATION FOR A CHANGE IN SCOPE OF WORK; HOWEVER, THE CONTRACTOR WILL BE PAID FOR THE QUANTITY ACTUALLY FURNISHED AT THE UNIT PRICE BID FOR THE WORK.

ALL EXCAVATED MATERIAL, WHICH INCLUDES DIGGING OR GRADING OF ANY SOIL OR FILL MATERIAL, WITH THE EXCEPTION OF AGGREGATE FILLS, MUST BE INCORPORATED WITHIN THE IDOT RIGHT OF WAY DUE TO ENVIRONMENTAL DOCUMENTATION REQUIREMENTS.

ANY REFERENCE TO A STANDARD IN THESE PLANS SHALL BE INTERPRETED TO MEAN THE EDITION AS INDICATED BY THE SUBNUMBER SHOWN IN THE LIST OF STANDARDS OR THE COPY INCLUDED IN THESE PLANS.

THE FOLLOWING RATES OF APPLICATION HAVE BEEN USED IN CALCULATING PLAN QUANTITIES:

GRANULAR MATERIALS	2.05	TONS / CU YD
--------------------	------	--------------

THE CONTRACTOR SHALL CONTACT JULIE AT LEAST 48 HOURS PRIOR TO EXCAVATION TO DETERMINE WHICH UTILITIES ARE IN THE AREA.

STATE OF ILLINOIS
DEPARTMENT OF TRANSPORTATION
DISTRICT THREE
AS BUILT INFORMATION

SUPERVISING CONSTRUCTION FIELD ENGINEER

RESIDENT ENGINEER / TECHNICIAN

START & END DATES
OF CONSTRUCTION:

INSPECTORS:

STATE OF ILLINOIS
DEPARTMENT OF TRANSPORTATION
DISTRICT THREE

PREPARED BY: *Don Benoit*
DISTRICT STUDIES & PLANS ENGINEER

DATE: March 24, 2016

EXAMINED BY: *David D...*
DISTRICT CONSTRUCTION ENGINEER

[Signature]
DISTRICT MATERIALS ENGINEER

Paul A. H...
DISTRICT OPERATIONS ENGINEER

STATE OF ILLINOIS
DEPARTMENT OF TRANSPORTATION

GENERAL NOTES

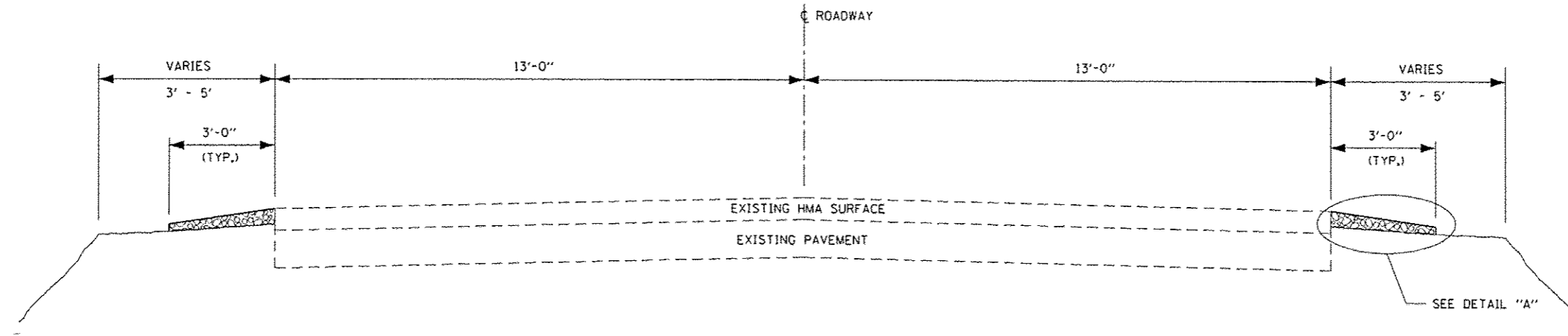
FILE NAME :	USER NAME : pletschr	DESIGNED -	REVISED -
...	...	CHECKED -	REVISED -
...	...	DATE -	REVISED -

SCALE:	SHEET	OF	SHEETS	STA.	TO STA.
--------	-------	----	--------	------	---------

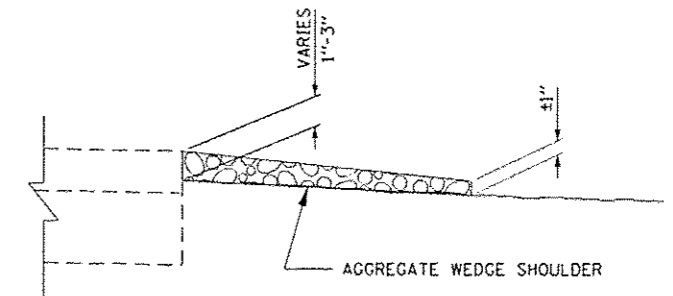
FAP RTE.	SECTION	COUNTY	TOTAL SHEETS	SHEET NO.
332	D3 AGGREGATE SHOULDERS 2016-3	KANKAKEE	6	2
				CONTRACT NO. 66F34
ILLINOIS FED. AID PROJECT				

CODE NO.	ITEM	UNIT	TOTAL QUANTITY	CONSTR. CODE
				CONT. MAINT. 100% STATE ROADWAY 0021 RURAL
48102100	AGGREGATE WEDGE SHOULDER, TYPE B	TON	2387	2387
67100100	MOBILIZATION	LSUM	1	1
70100460	TRAFFIC CONTROL AND PROTECTION, STANDARD 701306	LSUM	1	1

3



TYPICAL SECTION



DETAIL A

FILE NAME :	USER NAME : plotschr	DESIGNED -	REVISED -	STATE OF ILLINOIS DEPARTMENT OF TRANSPORTATION	TYPICAL SECTIONS			FAP	SECTION	COUNTY	TOTAL	SHEET
p:\work\044EBID\INTEG\Illinois.gov\PI\DOT\Documents\DOT Offices\District 3\Projects\0366\Drawings\0366F34-shl-details.dgn	DRAWN	REVISED -	REVISED -					332	03 AGGREGATE SHOULDERS 2016-3	KANKAKEE	6	4
PLOT SCALE = 100.0000' / in.	CHECKED -	REVISED -	REVISED -		CONTRACT NO. 66F34			ILLINOIS FED. AID PROJECT				
Default	PLOT DATE = 3/24/2016	DATE -	REVISED -		SCALE:	SHEET	OF	SHEETS	STA.	TO	STA.	

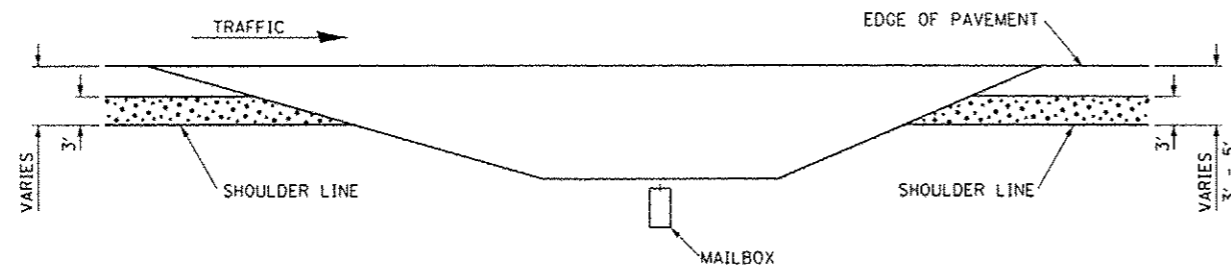
SCHEDULE - SOUTHBOUND LANE

LOG MILE		DISTANCE	WIDTH	AVE. DEPTH	TONS
LM - LM		FEET	FEET	INCHES	
	0.00	S. JUNCTION IL 1/17			
0.00	0.20	1056	3	1 1/4	26
0.20	2.30	11088	3	1 3/4	369
2.30	2.40	STRUCTURE NO. 046-0117			
2.40	6.40	21120	3	1 1/4	502
6.40	7.25	CCC&G IN ST. ANNE			
7.25	7.70	2376	3	1 1/4	57
7.70	8.40	3696	3	1 3/4	123
8.40		IROQUOIS COUNTY LINE			
TOTAL					1077

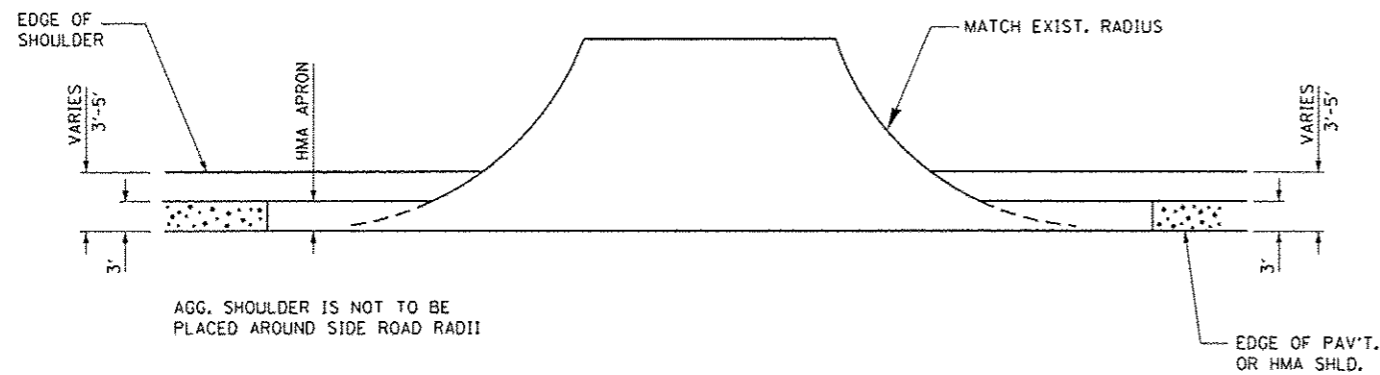
SCHEDULE - NORTHBOUND LANE

LOG MILE		DISTANCE	WIDTH	AVE. DEPTH	TONS
LM - LM		FEET	FEET	INCHES	
8.40	7.25	6072	3	1 3/4	202
7.25	6.40	CCC&G IN ST. ANNE			
6.40	6.30	528	3	1 3/4	18
6.30	2.40	20592	3	1 3/4	685
2.40	2.30	STRUCTURE NO. 046-0117			
2.30	1.50	4224	3	1 3/4	141
1.50	0.00	7920	3	1 3/4	264
TOTAL					1310

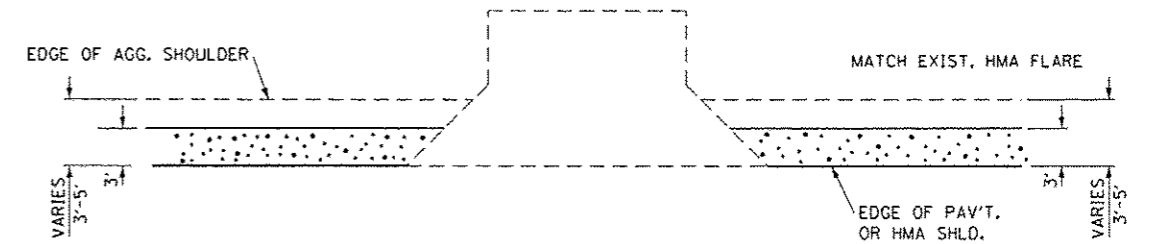
2016 06 24



PLAN AT MAIL BOX TURNOUTS



PLAN AT SIDE ROADS



PLAN AT PRIVATE & COMMERCIAL ENTRANCES

FILE NAME = p:\11\884EB\INTEG\Illinois.gov\PJ001\Documents\1001_Offices\District 3\Projects\036666\Drawings\036666_34-shs-details.dgn	USER NAME = pletschr	DESIGNED -	REVISED -	STATE OF ILLINOIS DEPARTMENT OF TRANSPORTATION	DETAILS	FAP RTE.	SECTION	COUNTY	TOTAL SHEETS	SHEET NO.	
	PLOT SCALE = 100.0000' / 1" = 1'	CHECKED -	REVISED -			332	03 AGGREGATE SHOULDERS 2016-3	KANKAKEE	6	6	
Defaults	DATE -	REVISED -	SCALE: SHEET OF SHEETS STA. TO STA.			ILLINOIS FED. AID PROJECT CONTRACT NO. 66F34					
PLOT DATE = 3/24/2016											