

STATE OF ILLINOIS
DEPARTMENT OF TRANSPORTATION
DIVISION OF HIGHWAYS

**PROPOSED
HIGHWAY PLANS**

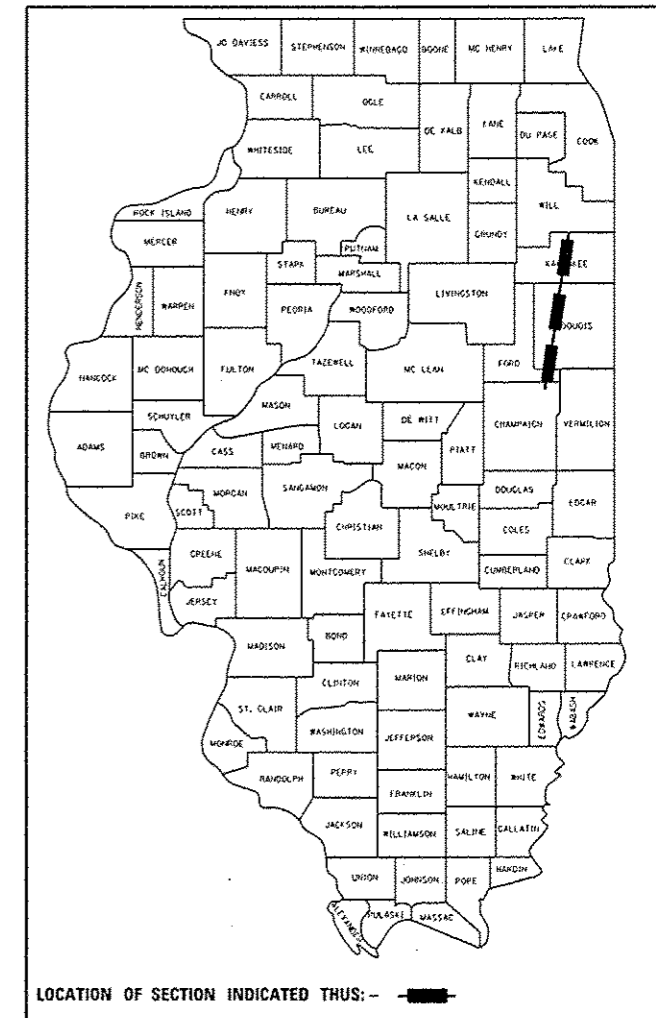
FAI 57 (I-57)
SECTION: 2016-3 WEED SPRAY
VARIOUS COUNTIES

C-93-084-16

F.A.I. RTE.	SECTION	COUNTY	TOTAL SHEETS	SHEET NO.
I-57	2016-3 WEED SPRAY	ILLINOIS	11	1
ILLINOIS			CONTRACT NO. 66F50	

*KANKAKEE, IROQUOIS, & FORD

D-93-041-16

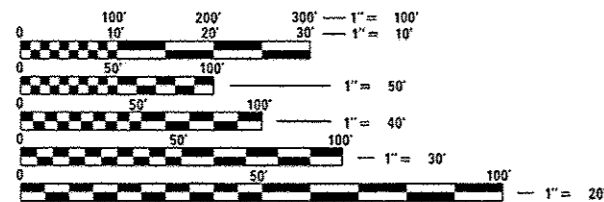


INDEX OF SHEETS

- 1 COVER SHEET
- 2 GENERAL NOTES
- 3 SUMMARY OF QUANTITIES
- 4-6 WEED SPRAY SCHEDULES
- 7-8 GPS COORDINATES FOR WEEDS
- 9-11 DETAILED LOCATION MAPS

LIST OF ILLINOIS DOT HIGHWAY STANDARDS

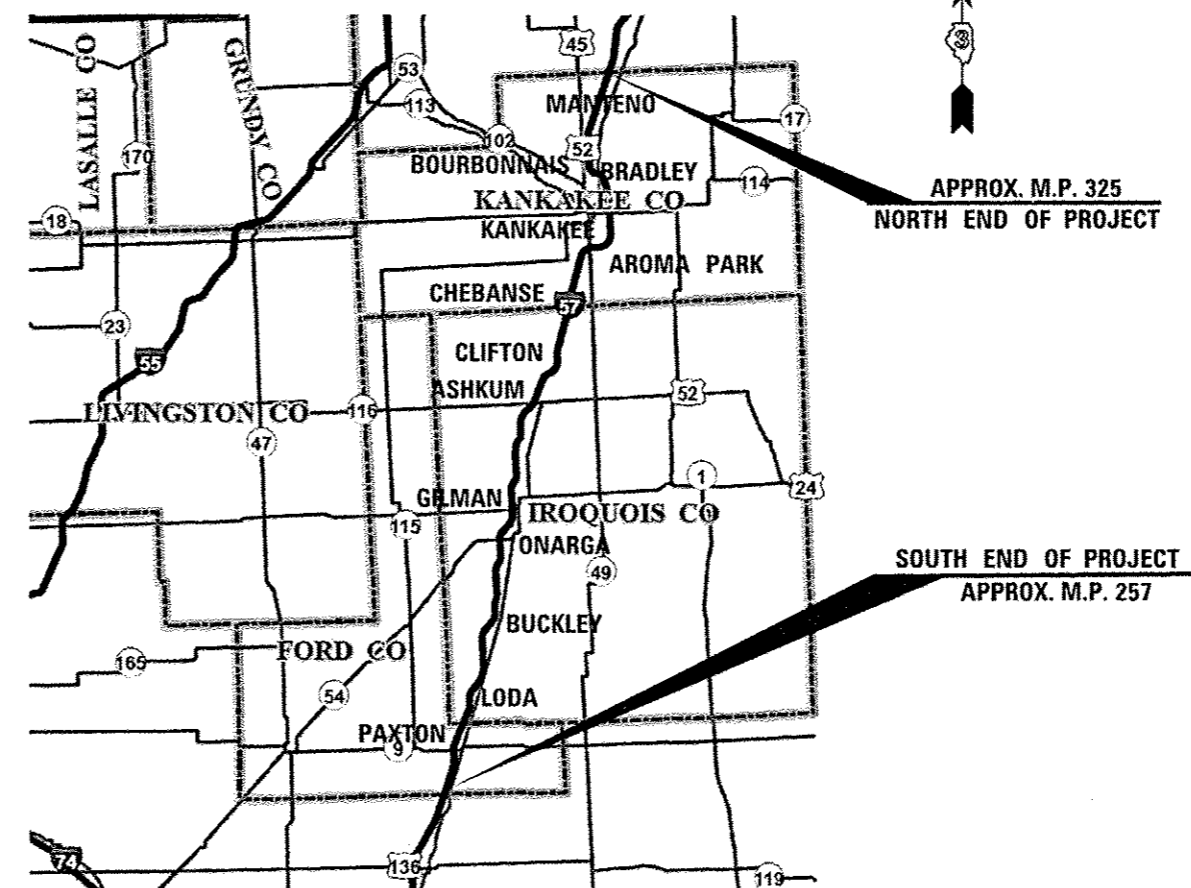
- 701101-05 OFF-ROAD OPERATIONS MULTILANE, 15' (4.5 m) TO 24" (600 mm) FROM PAVEMENT EDGE
- 701106-02 OFF-ROAD OPERATIONS, MULTILANE, MORE THAN 15' (4.5 m) AWAY
- 701426-08 LANE CLOSURE, MULTILANE INTERMITTENT OR MOVING OPERATION, FOR SPEEDS ≥ 45 MPH
- 701901-05 TRAFFIC CONTROL DEVICES



FULL SIZE PLANS HAVE BEEN PREPARED USING STANDARD ENGINEERING SCALES. REDUCED SIZED PLANS WILL NOT CONFORM TO STANDARD SCALES. IN MAKING MEASUREMENTS ON REDUCED PLANS, THE ABOVE SCALES MAY BE USED.

J.U.L.I.E.
JOINT UTILITY LOCATION INFORMATION FOR EXCAVATION
1-800-892-0123
OR 811

DISTRICT 3 (815) 434-6131
PROJECT ENGINEER: DAVE ALEXANDER, P.E.
UNIT CHIEF: RUTH SCHWANKE
TOWNSHIPS: VARIOUS
CONTRACT NO. 66F50



LOCATION MAP - NOT TO SCALE

FUNCTIONAL CLASSIFICATION: INTERSTATE
2013 ADT's
NORTH END: ADT=28,000 SU=3.8% MU=18.0%
SOUTH END: ADT=14,600 SU=6.0% MU=32.2%

STATE OF ILLINOIS
DEPARTMENT OF TRANSPORTATION

SUBMITTED *March 25 2016*
Paul Costello REGION ENGINEER

May 16 2016
Maureen M. Addis, P.E. ENGINEER OF DESIGN AND ENVIRONMENT

May 16 2016
David [Signature] DIRECTOR OF PROGRAM DEVELOPMENT

PRINTED BY THE AUTHORITY
OF THE STATE OF ILLINOIS

GENERAL NOTES

ANY REFERENCE TO A STANDARD IN THESE PLANS SHALL BE INTERPRETED TO MEAN THE EDITION AS INDICATED BY THE SUBNUMBER SHOWN IN THE LIST OF STANDARDS OR THE COPY INCLUDED IN THESE PLANS.

THE FOLLOWING RATES OF APPLICATION HAVE BEEN USED IN CALCULATING PLAN QUANTITIES:

HERBICIDE / INGREDIENTS		APPLICATION RATE	PAY ITEM
TRANSLINE	14	OUNCES / ACRE	WEED CONTROL, BROADLEAF IN TURF
DMA 4	1	QUART / ACRE (OR 32 OUNCES / ACRE)	WEED CONTROL, BROADLEAF IN TURF
RODEO	6	PINTS / ACRE (OR 96 OUNCES / ACRE)	WEED CONTROL, AQUATIC
ARSENAL	4	PINTS / ACRE (OR 64 OUNCES / ACRE)	WEED CONTROL, AQUATIC
IMPROVED SURFACTANT	1	QUART / 100 GALLONS OF WATER	N/A
WATER	25	GALLONS MINIMUM / ACRE	N/A

COMMITMENTS: NONE

STATE OF ILLINOIS
DEPARTMENT OF TRANSPORTATION
DISTRICT THREE
AS BUILT INFORMATION

STATE OF ILLINOIS
DEPARTMENT OF TRANSPORTATION
DISTRICT THREE

PREPARED BY: Tom Benil
DISTRICT STUDIES & PLANS ENGINEER

DATE: March 25, 2016

EXAMINED BY: [Signature]
DISTRICT CONSTRUCTION ENGINEER

[Signature]
DISTRICT MATERIALS ENGINEER

[Signature]
DISTRICT OPERATIONS ENGINEER

START & END DATES
OF CONSTRUCTION:

INSPECTORS:

STATE OF ILLINOIS
DEPARTMENT OF TRANSPORTATION

GENERAL NOTES

* KANKAKEE, IROQUOIS, & FORD

FILE NAME: g:\p\work\avidot\carpentardj\d0472041\366F10\shtrcover and general notes.dgn	USER NAME: carpentardj	DESIGNED: -	REVISED: -	STATE OF ILLINOIS DEPARTMENT OF TRANSPORTATION	GENERAL NOTES	F.A.I. RTE: 1-57	SECTION: 2016-3 WEED SPRAY	COUNTY: *	TOTAL SHEETS: 11	SHEET NO.: 2
PLOT SCALE: 1/8" = 1'-0"	CHECKED: -	REVISED: -	SCALE: SHEET OF SHEETS STA. TO STA.			CONTRACT NO. 66F50				
PLOT DATE: 3/25/2016	DATE: -	REVISED: -	ILLINOIS NON-FED. AID PROJECT							

CODE NO.	ITEM	UNIT	TOTAL QUANTITY	100% STATE
				CONSTR. CODE
				ROADWAY
				0031
67100100	MOBILIZATION	LSUM	1	1
K0029614	WEED CONTROL, AQUATIC	GALLON	19	19
K0029618	WEED CONTROL, BROADLEAF IN TURF	GALLON	447	447

FILE NAME	USER NAME = carpenterdj	DESIGNED -	REVISED -	STATE OF ILLINOIS DEPARTMENT OF TRANSPORTATION	SUMMARY OF QUANTITIES				F.A.I. RTE.	SECTION	COUNTY	TOTAL SHEETS	SHEET NO.
p:\L084E01INTEG,illinois.gov\WIDOT\Documents\DOT Offices\District 3\Projects\0366\DRAWING\0366F13-shr-500.dgn	PLLOT SCALE = 100.0000' / in.	CHECKED -	REVISED -						1-57	2016-3 WEED SPRAY	*	11	3
Default	PLLOT DATE = 3/29/2016	DATE -	REVISED -		SCALE: SHEET OF SHEETS STA. TO STA.				ILLINOIS FED. AID PROJECT				
												CONTRACT NO. 66F50	

* KANKAKEE, IROQUOIS, & FORD COUNTIES

FIRST APPLICATION (TRANSLINE AND DMA 4) WEED SPRAY ON I-57				
LOCATION	MILES	AREA	TRANSLINE	DMA 4
		ACRES	GALLONS	GALLONS
KANKAKEE COUNTY				
NORTH END - APPROX. MP 325 TO MANTENO INTERCHANGE	3.50	70	7.61	17.39
MP 322 - MANTENO INTERCHANGE (CH 9)	-	25	2.73	6.25
MANTENO INTERCHANGE TO BRADLEY INTERCHANGE	6.50	113	12.41	28.36
MP 315 - BRADLEY INTERCHANGE (IL 50)	-	25	2.73	6.25
BRADLEY INTERCHANGE TO KANKAKEE INTERCHANGE	3.50	53	5.75	13.15
MP 312 - KANKAKEE INTERCHANGE (IL 17)	-	25	2.73	6.25
KANKAKEE INTERCHANGE TO US 45/52 INTERCHANGE	4.50	55	5.97	13.64
MP 308 - US 45/52 INTERCHANGE	-	25	2.73	6.25
US 45/52 INTERCHANGE TO CHEBANSE INTERCHANGE	5.00	90	9.88	22.58
KANKAKEE COUNTY TOTALS	23	480	52.6	120.1
IROQUOIS COUNTY				
MP 283 - GILMAN INTERCHANGE (US 24)	-	25	2.73	6.25
GILMAN INTERCHANGE TO ONARGA INTERCHANGE	3.00	81	8.91	20.36
MP 280 - ONARGA INTERCHANGE (IL 54)	-	25	2.73	6.25
ONARGA INTERCHANGE TO BUCKLEY INTERCHANGE	9.00	207	22.67	51.82
MP 272 - BUCKLEY INTERCHANGE (CH 9)	-	25	2.73	6.25
BUCKLEY INTERCHANGE TO MP 263	8.00	199	21.74	49.70
IROQUOIS COUNTY TOTALS	20	563	61.5	140.6
FORD COUNTY				
MP 263 TO PAXTON INTERCHANGE	2.50	73	7.95	18.18
MP 261 - PAXTON INTERCHANGE (IL 9)	-	25	2.73	6.25
PAXTON INTERCHANGE TO SOUTH END - APPROX. MP 257	4.00	102	11.14	25.45
FORD COUNTY TOTALS	7	200	21.8	49.9
GRAND TOTALS				
	50	1243	136	311

NOTES:

DO NOT SPRAY IN CONSTRUCTION ZONES
DO NOT SPRAY WHERE BARRIER WALL STARTS AT MP 319.5 TO MP 317.7 (6000 N.)

APPLICATION RATES:

TRANSLINE = 14 OUNCES / ACRE
DMA 4 = 32 OUNCES / ACRE
NON-IONIC SURFACTANT = 1 QUART / 100 GALLONS WATER
WATER = 25 GALLONS MINIMUM / ACRE

PAY ITEM FOR THIS PAGE = (136+311) =447 GALLONS OF WEED CONTROL, BROADLEAF IN TURF

SECOND APPLICATION (RODEO & ARSENAL) WEED SPRAY ON I-57

LOCATION	LENGTH FEET	WIDTH FEET	NUMBER OF LOCATIONS	AREA ACRES	RODEO GALLONS	ARSENAL GALLONS
I-57 NORTHBOUND - REFER TO SCHEDULE OF GPS LOCATIONS ON SHEET 7						
FORD COUNTY - STARTING AT APPROX. MP 257						
SIXTEEN LOCATIONS ON I-57 NB	20	20	16	0.147	0.11	0.07
IROQUOIS COUNTY						
STRETCH ALONG I-57 NB: INBOUND RAMPS TO NB MAIN LINE STATION REST AREA	300	10	1	0.069	0.05	0.03
STRETCH ALONG I-57 NB: DITCH LINE IN FRONT OF NB MAIN LINE STATION REST AREA	300	10	1	0.069	0.05	0.03
STRETCH ALONG I-57 NB: DITCH LINE AND OFF RAMP AT NB MAIN LINE STATION REST AREA	300	10	1	0.069	0.05	0.03
STRETCH ALONG I-57 N.B	1862	10	1	0.427	0.32	0.21
STRETCH ALONG I-57 N.B	2435	10	1	0.559	0.42	0.28
LOCATION ON I-57 NB	20	20	1	0.009	0.01	0.00
LOCATION ON I-57 N.B - SPRAY AT MP 269 ONE PATCH OF PHRAGMITES	20	20	1	0.009	0.01	0.00
TWO LOCATIONS ON I-57 NB	20	20	2	0.018	0.01	0.01
STRETCH ALONG I-57 NB - AT CULVERT	20	20	1	0.009	0.01	0.00
STRETCH ALONG I-57 NB: - SPRAY TO MP 272 BUCKLEY EXIT RAMP	4124	10	1	0.947	0.71	0.47
STRETCH ALONG I-57 NB - INFIELD NE QUADRANT OF INTERCHANGE NEAR EXIT 272	300	10	1	0.069	0.05	0.03
STRETCH ALONG I-57 NB: NEAR CREEK AND S.N. -0151	2547	10	1	0.585	0.44	0.29
STRETCH ALONG I-57 NB: NEAR CREEK AND S.N. -0151	1783	10	1	0.409	0.31	0.20
THREE LOCATIONS ON I-57 NB	20	20	3	0.028	0.02	0.01
STRETCH ALONG I-57 NB - NEAR MP 276	2575	10	1	0.591	0.44	0.30
LOCATION ON I-57 NB	20	20	1	0.009	0.01	0.00
STRETCH ALONG I-57 NB - NEAR MP 277	2284	10	1	0.524	0.39	0.26
STRETCH ALONG I-57 NB; PATCH OF PHRAGMITES	150	25	1	0.086	0.06	0.04
STRETCH ALONG I-57 NB - NEAR CREEK	456	10	1	0.105	0.08	0.05
STRETCH ALONG I-57 NB	1784	10	1	0.410	0.31	0.20
STRETCH ALONG I-57 NB: ONARGA, RIGHT SIDE OF RAMP MP 280 TO THE STOP SIGN	573	10	1	0.132	0.10	0.07
STRETCH ALONG I-57 NB: NE QUADRANT MP 280 ON RAMP TO JUST N. OF OVERPASS	8258	10	1	1.896	1.42	0.95
LOCATION ON I-57 NB	20	20	1	0.009	0.01	0.00
STRETCH ALONG I-57 NB: INFIELD AT EXIT 297 NE QUADRANT	312	10	1	0.072	0.05	0.04
THREE LOCATIONS ON I-57 NB: ON RAMP AT MP 297 (NE QUADRANT)	20	20	3	0.028	0.02	0.01
KANKAKEE COUNTY						
STRETCH ALONG I-57 NB: NEAR GAS EXIT 308 SIGN	5451	10	1	1.251	0.94	0.63
STRETCH ALONG I-57 NB: SHOULD INCLUDE MP 308-309	4125	10	1	0.947	0.71	0.47
NORTHBOUND TOTALS						
				9.48	7.1	4.7

PAY ITEM FOR THIS PAGE = (7.1+4.7) = 11.8 GALLONS OF WEED CONTROL, AQUATIC

SECOND APPLICATION (RODEO & ARSENAL) WEED SPRAY ON I-57

LOCATION	LENGTH FEET	WIDTH FEET	NUMBER OF LOCATIONS	AREA	RODEO	ARSENAL
				ACRES	GALLONS	GALLONS
I-57 SOUTHBOUND - REFER TO SCHEDULE OF GPS LOCATIONS ON SHEET 8						
KANKAKEE COUNTY - STARTING AT APPROX. MP 310						
EIGHT LOCATIONS ON I-57 SB	20	20	8	0.073	0.06	0.04
STRETCH NEAR MM 304 ON I-57 SB	1644	10	1	0.377	0.28	0.19
TWO LOCATIONS ON I-57 SB	20	20	2	0.018	0.01	0.01
IROQUOIS COUNTY						
STRETCH IN INFIELD NEAR RAMP: I-57 SB	867	10	1	0.199	0.15	0.10
THIRTEEN LOCATIONS ON SB I-57	20	20	13	0.119	0.09	0.06
STRETCH ALONG I-57 SB	9119	10	1	2.093	1.57	1.05
TWO LOCATIONS ON I57 SB	20	20	2	0.018	0.01	0.01
STRETCH ALONG I-57 SB	2478	10	1	0.569	0.43	0.28
STRETCH ALONG I-57 SB	6773	10	1	1.555	1.17	0.78
STRETCH ALONG I-57 SB	1071	10	1	0.246	0.18	0.12
I-57 SB: RAMP TO MAINLINE STATION REST AREA / ENTIRE RAMP INBOUND TO REST AREA	300	10	1	0.069	0.05	0.03
KANKAKEE COUNTY						
I-57 SB: OFF RAMP NEAR MM 261	300	10	1	0.069	0.05	0.03
I-57 SB: ON RAMP NEAR MM 261	300	10	1	0.069	0.05	0.03
LOCATION ON I-57 SB	20	20	1	0.009	0.01	0.00
STRETCH ALONG I-57 SB	1154	10	1	0.265	0.20	0.13
SOUTHBOUND TOTALS				5.75	4.3	2.9
GRAND TOTALS				15.2	11.4	7.6

APPLICATION RATES:

RODEO = 6 PINTS (96 OUNCES) / ACRE

ARSENAL = 4 PINTS (64 OUNCES) / ACRE

NON-IONIC SURFACTANT = 1 QUART / 100 GALLONS WATER

WATER = 25 GALLONS MINIMUM / ACRE

PAY ITEM FOR THIS PAGE = (4.3+2.9) = 7.2 GALLONS OF WEED CONTROL, AQUATIC

PROJECT TOTALS = (11.4 + 7.6) = 19.0 GALLONS OF WEED CONTROL, AQUATIC

I-57 Northbound- GPS Coordinates for Phragmites and Cattails

Latitude	Longitude
N40°24.567'	W088°07.471'
N40°24.644'	W088°07.436'
N40°24.946'	W088°07.305'
N40°25.029'	W088°07.267'
N40°25.074'	W088°07.248'
N40°26.150'	W088°06.791'
N40°26.222'	W088°06.772'
N40°26.308'	W088°06.751'
N40°26.759'	W088°06.720'
N40°26.980'	W088°06.722'
N40°27.498'	W088°06.719'
N40°28.208'	W088°06.374'
N40°28.249'	W088°06.350'
N40°28.322'	W088°06.308'
N40°28.401'	W088°06.261'
N40°28.458'	W088°06.228'

I-57 NB: Inbound Ramp to NB Mainline Station Rest Area
N40°32.945' W088°03.701'

I-57 NB: Ditch line in front of NB Mainline Station Rest Area
N40°32.987' W088°03.685'

I-57 NB: Ditch line and off ramp at NB Mainline Station Rest Area
N40°33.160' W088°03.630'

Stretch along I-57 NB
N40°33.215' W088°03.631'
N40°33.520' W088°03.595'

Stretch along I-57 NB
N40°33.656' W088°03.597'
N40°34.057' W088°03.604'

N40°34.493' W088°03.612'

Stretch along I-57 NB
Spray @ MP 269 one patch of Phragmites

N40°34.595' W088°03.614' (Culvert)
N40°34.726' W088°03.615'

Latitude	Longitude
Stretch along I-57 NB: Spray to MP 272 Buckley exit ramp	
N40°35.608'	W088°03.631'
N40°36.198'	W088°03.330'
Stretch along I-57 NB: Infield NE Quadrant of Interchange near exit 272	
40°36.352'	W088°03.177'
Stretch along I-57 NB: Near creek and SN: 0151	
40°36.424'	W088°03.130'
40°36.728'	W088°02.751'
Stretch along I-57 NB: Near creek and SN: 0151	
N40°36.873'	W088°02.573'
N40°37.127'	W088°02.380'
N40°37.299'	W088°02.319'
N40°37.405'	W088°02.302'
N40°37.812'	W088°02.308'

Stretch along I-57 NB: Near MP 276
N40°38.964' W088°02.082'
N40°39.382' W088°02.097'

40°39.501' W088°02.101'

Stretch along I-57 NB: Near MP 277
N40°39.848' W088°02.114'
N40°40.224' W088°02.128'

Stretch along I-57 NB: Patch of Phragmites appx.. 25ft wide x 150ft long
N40°40.670' W088°02.127'

Stretch along I-57 NB: Near Creek
N40°40.781' W088°02.097'
N40°40.851' W088°02.069'

Stretch along I-57 NB
N40°40.943' W088°02.016'
N40°41.193' W088°01.818'

Stretch along I-57 NB: Onarga, Right side of ramp MP 280 to the stop sign
N40°42.807' W088°01.611'
N40°42.886' W088°01.540'

Latitude	Longitude
Stretch along I-57 NB: NE Quadrant MP 280 on ramp to just N. of overpass	
N40°43.021'	W088°01.644'
N40°44.094'	W088°00.656'

N40°45.670' W088°00.392

Stretch along I-57 NB: Infield @ exit 297 NE Quadrant
N40°55.798' W087°55.671'
N40°55.833' W087°55.627'

Points along I-57 NB: On Ramp @ MP 297 (NE Quadrant)
N40°55.785' W087°55.567'
N41°00.141' W087°54.299'
N41°00.599' W087°54.298'

Stretch along I-57 NB: Near Gas Exit 308 Sign
N41°03.014' W087°53.386'
N41°03.876' W087°53.055'

Stretch along I-57 NB: Should include MP 308-309
N41°04.611' W087°51.958'
N41°04.634' W087°51.059'

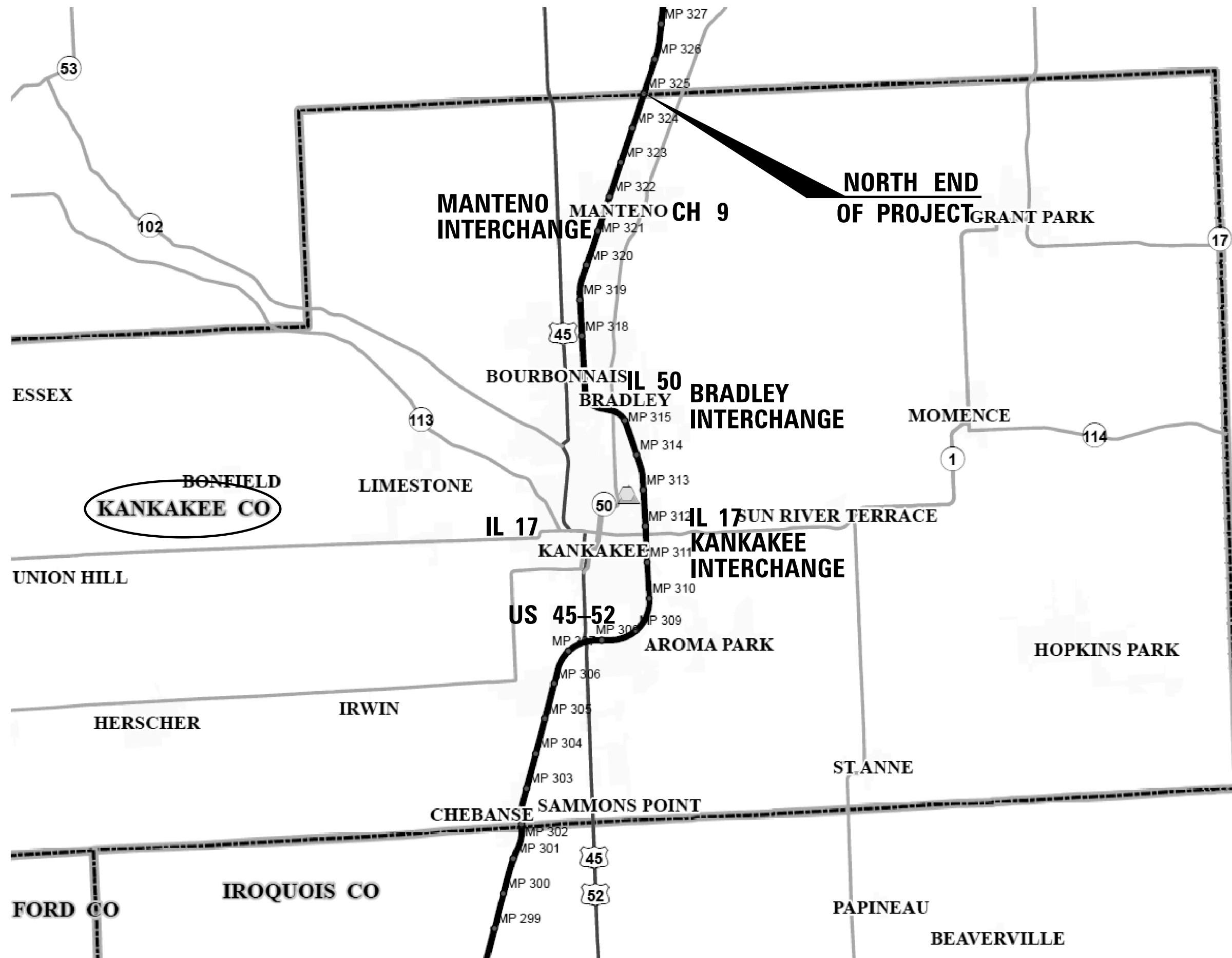
- Notes:
1. Spray each culvert where there is a stand of cattails
 2. MP 293-302 is not included/excluding some ramps

I-57 Southbound- GPS Coordinates for Phragmites and Cattails

Latitude	Longitude
N41°04.783'	W087°50.647'
N41°04.686'	W087°50.899'
N41°04.632'	W087°51.643'
N41°04.633'	W087°51.729'
N41°04.517'	W087°52.455'
N41°03.997'	W087°53.035'
N41°03.758'	W087°53.123'
N41°02.565'	W087°53.572'
Stretch near MM 304 ON I-57 SB	
N41°01.950'	W087°53.824'
N41°01.704'	W087°53.915'
N41°01.248'	W087°54.090 (Near MM 303)
N41°00.875'	W087°54.233'
Areas along the highway between MP 293-302 are not included/excluding some ramps	
Stretch Infield near ramp: I-57 SB	
N40°53.017'	W087°58.081'
N40°52.903'	W087°58.187'
N40°51.138	W087°59.398'
N40°46.687	W088°00.447'
N40°45.562	W088°00.418' (Near exit 283 Gilman, IL)
N40°44.172'	W088°00.615'
N40°44.108'	W088°00.679'
N40°43.603'	W088°01.273'
N40°43.580'	W088°01.300'
N40°43.559'	W088°01.325'
N40°43.495'	W088°01.400'
N40°43.377'	W088°01.537'
N40°42.858'	W088°01.711'
N40°42.749'	W088°01.706'
N40°42.563'	W088°01.697'
Stretch I-57 SB	
N40°42.198'	W088°01.680'
N40°40.776'	W088°02.128'
N40°40.046'	W088°02.149'
N40°39.489'	W088°02.130'

Latitude	Longitude
Stretch along I-57 SB	
N40°39.408'	W088°02.128'
N40°39.000'	W088°02.113'
Stretch along I-57 SB	
N40°37.036'	W088°02.465'
N40°36.343'	W088°03.277'
Stretch along I-57 SB	
N40°34.588'	W088°03.642'
N40°34.446'	W088°03.638'
I-57 SB: Ramp to Mainline Station Rest Area/Entire Ramp Inbound to Rest Area	
N40°33.783'	W088°03.645'
I-57 SB: Off Ramp near MM 261	
N40°27.486'	W088°06.767'
I-57 SB: On Ramp near MM 261	
N40°27.173'	W088°06.776'
N40°26.151'	W088°06.820'
Stretch along I-57 SB	
N40°25.201'	W088°07.224'
N40°25.025'	W088°07.301'

- Notes:
1. Spray each culvert where there is a stand of cattails
 2. MP 293-302 is not included/excluding some ramps



FILE NAME =	USER NAME = carpenterdj	DESIGNED -	REVISED -
p:\il\084EBID\INTEG\illinois.gov\PIDOT\Documents\IDOT_Offices\District_3\Projects\VD366\DRAWING>Data\B366F13-sht-details.dgn		REVISED -	REVISED -
	PLOT SCALE = 100.2024' / in.	CHECKED -	REVISED -
	PLOT DATE = 3/28/2016	DATE -	REVISED -

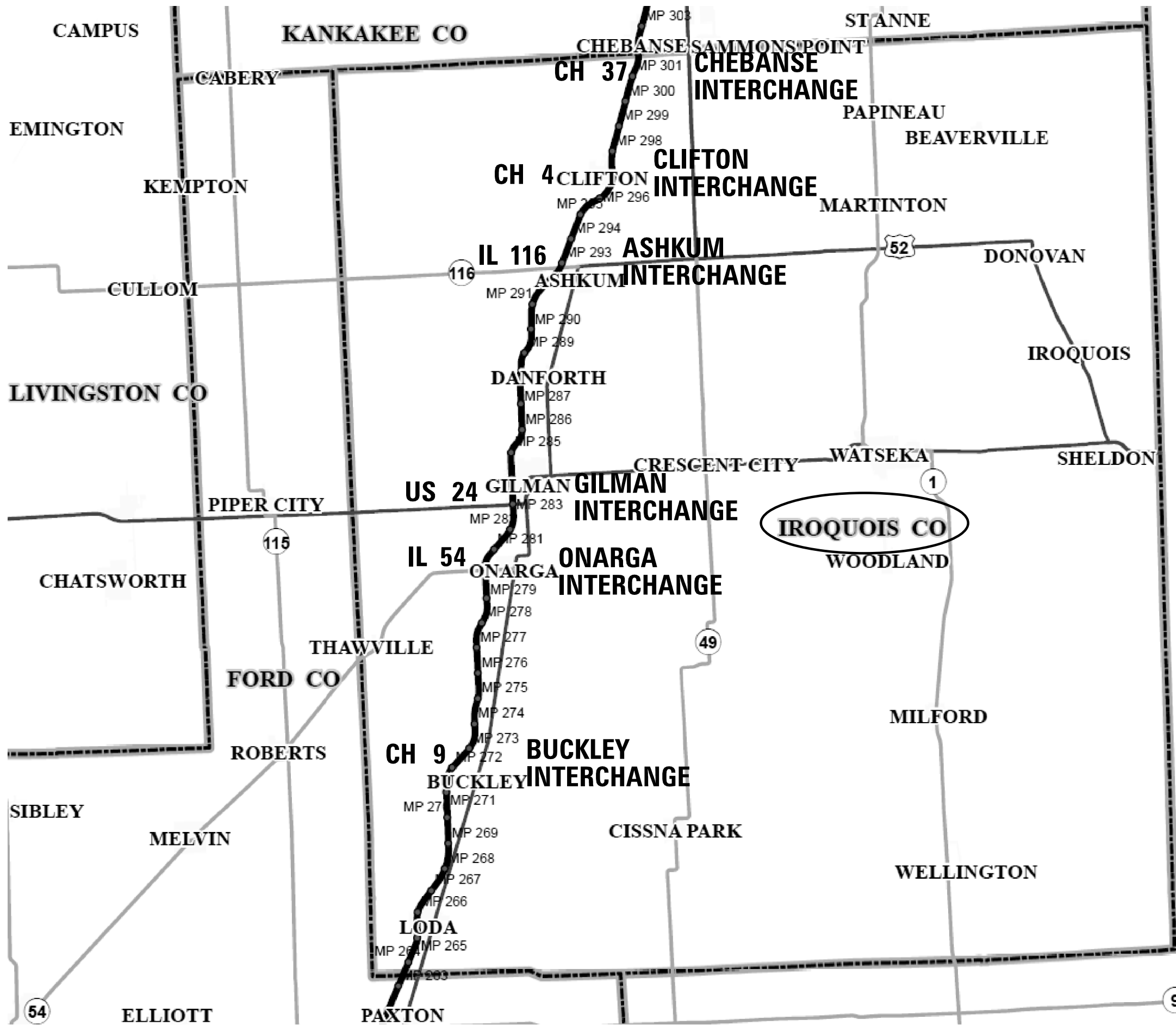
**STATE OF ILLINOIS
DEPARTMENT OF TRANSPORTATION**

DETAILED LOCATION MAP - KANKAKEE COUNTY

SCALE: SHEET NO. OF SHEETS STA. TO STA.

F.A.I. RTE.	SECTION	COUNTY	TOTAL SHEETS	SHEET NO.
1-57	2016-3 WEED SPRAY	*	11	9
CONTRACT NO. 66F50				
ILLINOIS FED. AID PROJECT				

* KANKAKEE, IROQUOIS, & FORD COUNTIES



FILE NAME =	USER NAME = carpenterdj	DESIGNED -	REVISED -
p:\IL\084EBID\INTEG\illinois.gov\PIWIDOT\Documents\IDOT_Offices\District_3\Projects\0366\DRAWING>Data\B366F13-sht-details.dgn		DRAWN -	REVISED -
	PLOT SCALE = 100.0000' / in.	CHECKED -	REVISED -
	PLOT DATE = 3/28/2016	DATE -	REVISED -

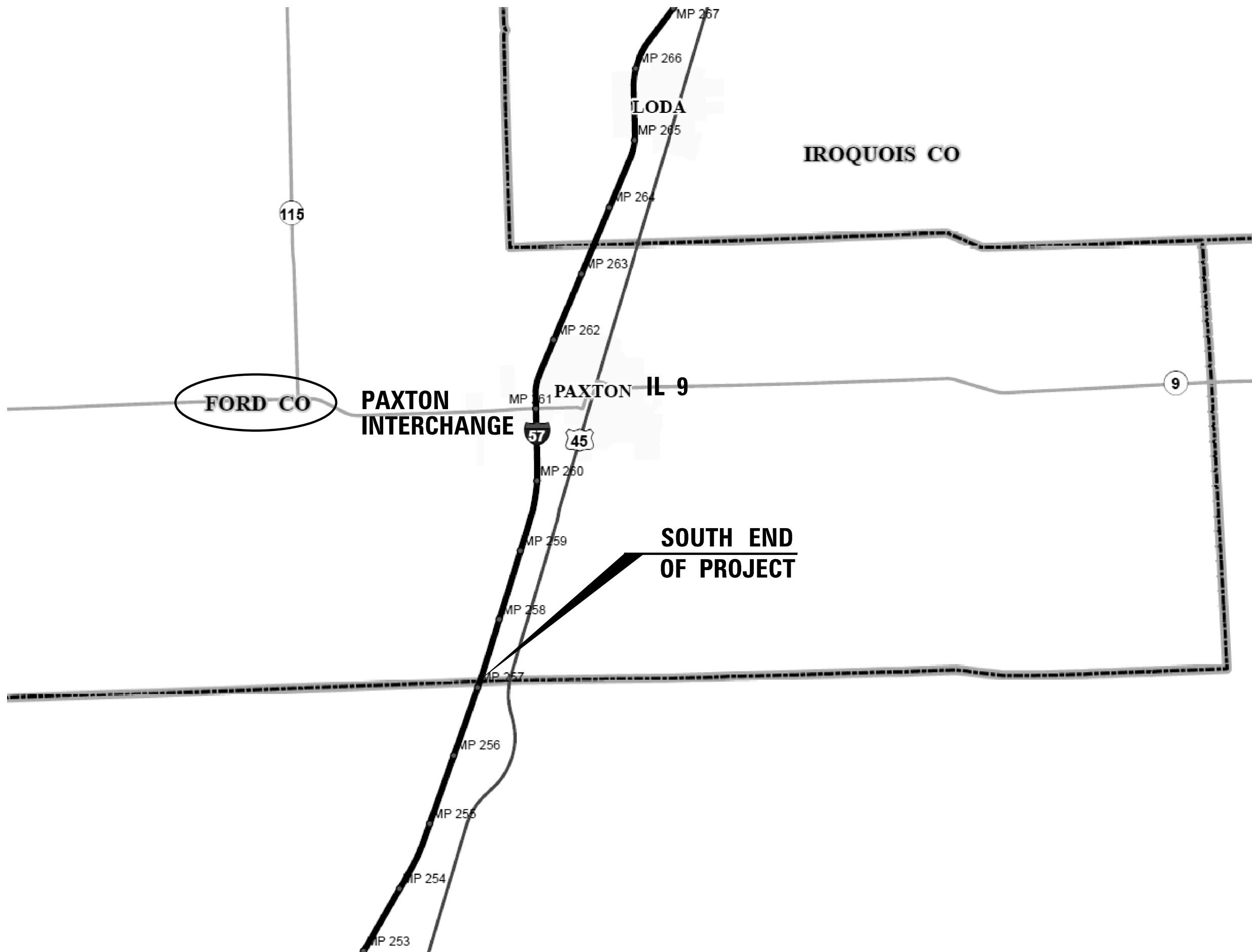
**STATE OF ILLINOIS
DEPARTMENT OF TRANSPORTATION**

DETAILED LOCATION MAP - IROQUOIS COUNTY

SCALE: SHEET NO. OF SHEETS STA. TO STA.

F.A.I. RTE.	SECTION	COUNTY	TOTAL SHEETS	SHEET NO.
1-57	2016-3 WEED SPRAY	•	11	10
			CONTRACT NO. 66F50	
ILLINOIS FED. AID PROJECT				

• KANKAKEE, IROQUOIS, & FORD COUNTIES



FILE NAME =	USER NAME = carpenterdj	DESIGNED -	REVISED -
p:\IL\084EBID\INTEG\illinois.gov\PI\DOT\Documents\DOT Offices\District 3\Projects\0366\DRAWING\0366F13-sht-details.dgn		CHECKED -	REVISED -
		DATE -	REVISED -

**STATE OF ILLINOIS
DEPARTMENT OF TRANSPORTATION**

DETAILED LOCATION MAP - FORD COUNTY

SCALE: SHEET NO. OF SHEETS STA. TO STA.

F.A.I. RTE.	SECTION	COUNTY	TOTAL SHEETS	SHEET NO.
I-57	2016-3 WEED SPRAY	*	11	11
ILLINOIS FED. AID PROJECT			CONTRACT NO. 66F50	

* KANKAKEE, IROQUOIS, & FORD COUNTIES