

INDEX OF SHEETS

- 1 COVER SHEET
- 2 GENERAL /PROJECT SPECIFIC NOTES
- 3-4 SUMMARY OF QUANTITIES
- 5 TYPICAL SECTIONS
- 6 ALIGNMENTS, TIES, AND BENCHMARKS
- 7 SCHEDULE OF QUANTITIES
- 8 PLAN AND PROFILE
- 9-10 CROSS SECTIONS
- 11-12 DETOUR DETAIL
- 13 CLOSURE DETAIL
- 14-15 DISTRICT CADD STANDARDS

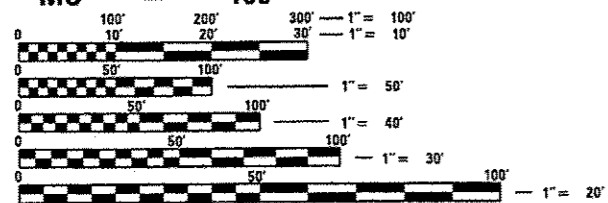
HIGHWAY STANDARDS

- 420101-05 701901-05
- 606001-06 780001-05
- 701201-04 BLR 22-7
- 701301-04
- 701311-03

DESIGN DESIGNATION:
CLASS III TRUCK ROUTE

FUNCTIONAL CLASSIFICATION:
OTHER ARTERIAL

ADT = 11800
SU = 59
MU = 165



FULL SIZE PLANS HAVE BEEN PREPARED USING STANDARD ENGINEERING SCALES. REDUCED SIZED PLANS WILL NOT CONFORM TO STANDARD SCALES. IN MAKING MEASUREMENTS ON REDUCED PLANS, THE ABOVE SCALES MAY BE USED.

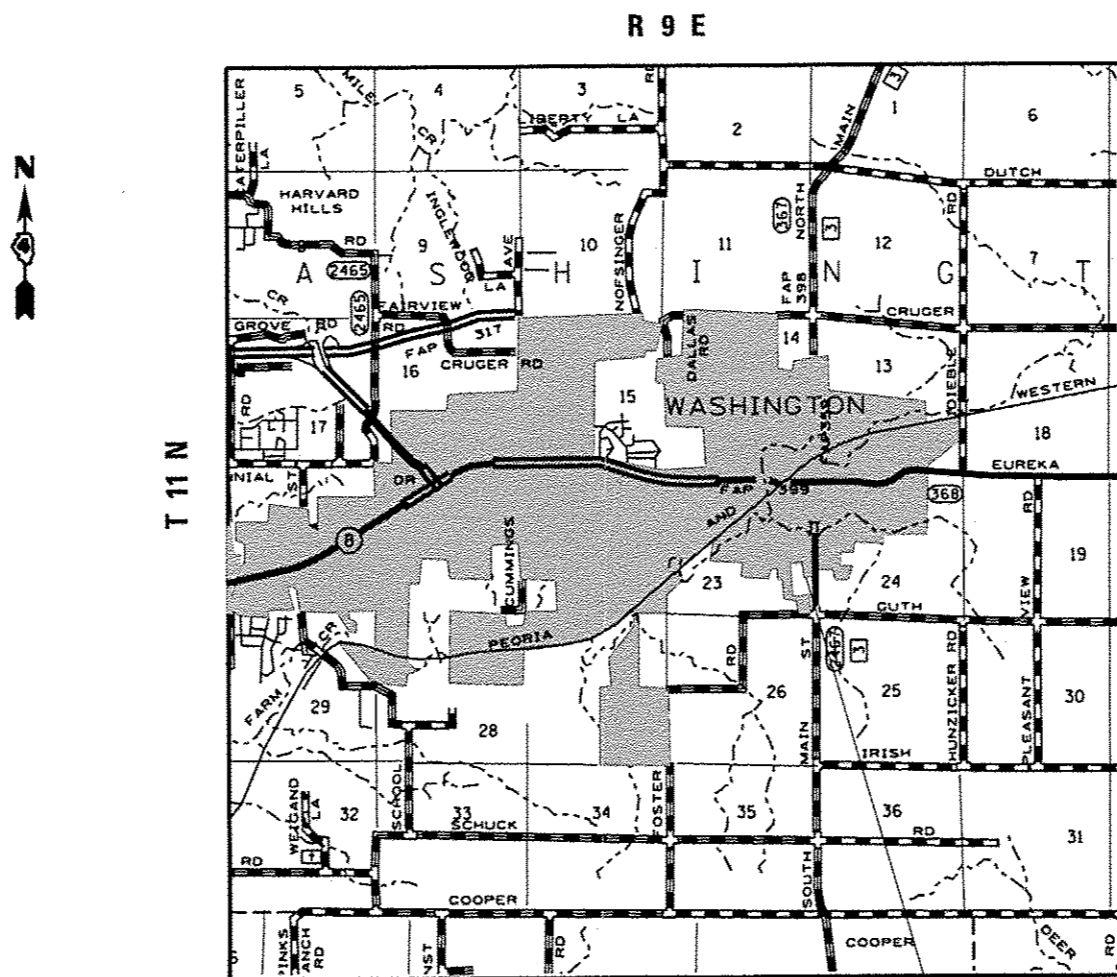
J.U.L.I.E.
JOINT UTILITY LOCATION INFORMATION FOR EXCAVATION
1-800-892-0123
OR 811

PROJECT ENGINEER RICH DOTSON (309) 671-3455
PROJECT MANAGER MIKE JACOBS (309) 671-3474
CATALOG NO. 035370-00D
CONTRACT NO. 68D04 CONTRACT MAINTENANCE

STATE OF ILLINOIS
DEPARTMENT OF TRANSPORTATION
DIVISION OF HIGHWAYS

**PROPOSED
HIGHWAY PLANS**

FAP ROUTE 399 (BUS 24)
SECTION 36-1-4
TAZEWELL COUNTY
C-94-031-16

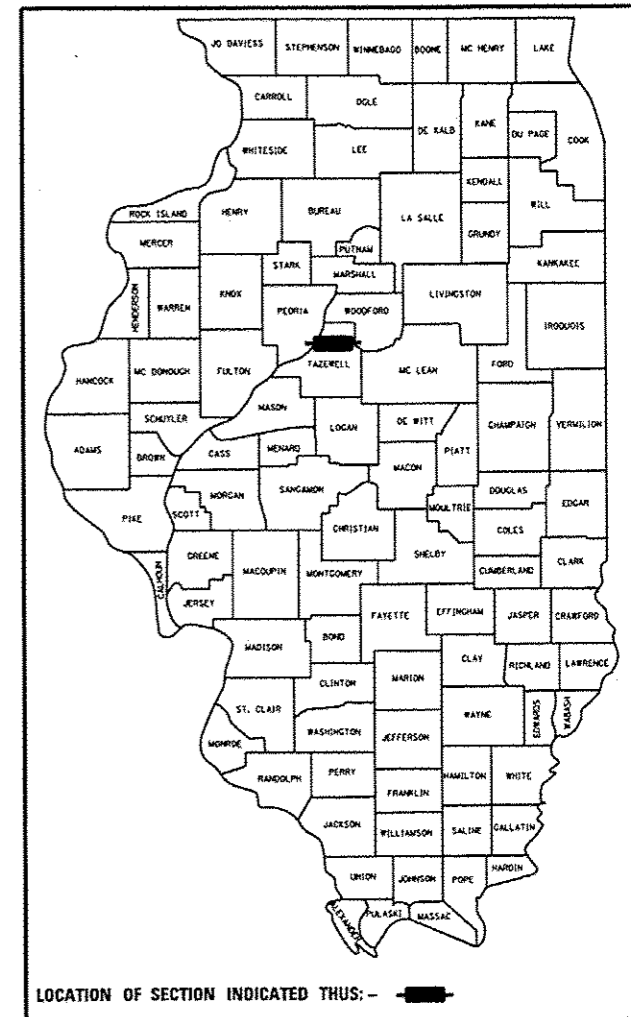


GROSS LENGTH = 260 FT. = 0.05 MILES
NET LENGTH = 260 FT. = 0.05 MILES

PROJECT BEGINS STA 13+40
PROJECT ENDS STA 16+00

| F.A.P. RTE. | SECTION | COUNTY | TOTAL SHEETS | SHEET NO. |
|-------------|---------|----------|--------------------|-----------|
| 318 | 36-1-4 | TAZEWELL | 15 | 1 |
| | | ILLINOIS | CONTRACT NO. 68D04 | |

D-94-013-16



PROJECT DESCRIPTION -

PAVEMENT REPLACEMENT ON BUS 24
AT THE TP&W RR VIADUCT WASHINGTON

STATE OF ILLINOIS
DEPARTMENT OF TRANSPORTATION
DIVISION OF HIGHWAYS

SUBMITTED March 31 2016

David A. Jones
DEPUTY DIRECTOR OF HIGHWAYS, REGION ENGINEER

Maureen M. Addis PE
ENGINEER OF DESIGN AND ENVIRONMENT

Osman
DIRECTOR OF HIGHWAYS, CHIEF ENGINEER

PRINTED BY THE AUTHORITY
OF THE STATE OF ILLINOIS

GENERAL NOTES

107.00 COMMITMENTS

Commitments are not to be altered without the written approval of all parties to which the commitment was made.

107.09 PROPERTY OWNER ACCESS REQUIREMENTS

Access must be maintained to all existing properties during construction per Article 107.09 unless arrangements are made in writing by the Contractor with the property owners with a copy to the Engineer for short-term closures.

204.00 ENVIRONMENTAL REVIEWS

Prior to the use of any proposed borrow areas, use areas (temporary access roads, detours, run-arounds, etc.) and/or waste areas, the Contractor shall file the required environmental resource request surveys according to Section 107.22 of the Standard Specifications. These surveys are required in order for the Department to conduct cultural and biological resource surveys for the proposed site.

Prior to any waste materials being removed from the construction site the required environmental resource surveys will need to be obtained and filed by the Contractor. Excess waste products removed from the construction site shall be disposed of as required in Section 202.03 of the Standard Specifications.

Any protruding metal bars shall be removed prior to the disposal of broken concrete at approved disposal sites.

The required environmental resource documentation shall include the following:

- * BDE Form 2289 (Environmental Survey Request)
- * BDE Form 2290 (Waste/Use Area Review)
- * A location map showing the size limits and location of the use area
- * Color photographs depicting the use area
- * Borrow Area Entry Agreement form-D4 PI0101

Please note that a minimum of four weeks shall be allowed for the District to obtain the required environmental clearances and six weeks for the required borrow site environmental clearances.

PROJECT SPECIFIC NOTES

1. The contractor shall use 3 changeable message signs for one week prior to each closure of BUS 24 to provide advanced notice to motorists.
2. See Special Provisions for suggested staging and changeable message sign placement.
3. After excavation for proposed subgrade, the existing SUBBASE GRANULAR MATERIAL, TY A, shall be checked for a 4" depth, and spot checking of depth shall be paid for using article 109.04. If existing subbase is 4" or more in depth, no additional subbase excavation or proposed SUBBASE GRANULAR MATERIAL, TY A will be required.
4. Number 6, 24" tiebars shall be installed in the transverse joints between the existing pavement and proposed PCC PAVEMENT 8³/₄" on 24" centers with 8" embedment into existing pavement, and shall be included in the cost of PCC PAVEMENT 8³/₄".

| | | | | | | | | | | | |
|-------------------------------|----------------------|------------|-----------|---|---------------------------------------|--------------------|---------|----------|-----------------|--------------|---------|
| FILE NAME = 68004 plan.dgn | USER NAME = oubreyga | DESIGNED - | REVISED - | STATE OF ILLINOIS DEPARTMENT OF TRANSPORTATION | GENERAL/PROJECT SPECIFIC NOTES | F.A.P. RTE. | SECTION | COUNTY | TOTAL SHEETS | SHEET NO. | |
| | | DRAWN - | REVISED - | | | 318 | 36-1-4 | TAZEWELL | 15 | 2 | |
| | | CHECKED - | REVISED - | | | CONTRACT NO. 68004 | | | | | |
| Default | | DATE - | REVISED - | | | SCALE: | SHEET | OF | SHEETS | STA. | TO STA. |

| CODE NO. | ITEM | UNIT | TOTAL QUANTITY | URBAN | |
|----------|--|-------|----------------|-------------|------|
| | | | | CONST. CODE | |
| | | | | 100% STATE | 0005 |
| 20200100 | EARTH EXCAVATION | CU YD | 205 | 205 | |
| 21001000 | GEOTECHNICAL FABRIC FOR GROUND STABILIZATION | SQ YD | 1050 | 1050 | |
| 21101615 | TOPSOIL, FURNISH & PLACE, 4" | SQ YD | 175 | 175 | |
| 25000210 | SEEDING, CLASS 2A | ACRE | 0.04 | 0.04 | |
| 25000400 | NITROGEN FERTILIZER NUTRIENT | POUND | 3.6 | 3.6 | |
| 25000500 | PHOSPHORUS FERTILIZER NUTRIENT | POUND | 3.6 | 3.6 | |
| 25000600 | POTASSIUM FERTILIZER NUTRIENT | POUND | 3.6 | 3.6 | |
| 25100630 | EROSION CONTROL BLANKET | SQ YD | 175 | 175 | |
| 31101000 | SUB-BASE GRANULAR MATERIAL, TYPE B | TON | 240 | 240 | |
| 40201000 | AGGREGATE FOR TEMPORARY ACCESS | TON | 30 | 30 | |
| 42000316 | PORTLAND CEMENT CONCRETE PAVEMENT, 8 $\frac{1}{2}$ " (JOINTED) | SQ YD | 910 | 910 | |
| 42300300 | PORTLAND CEMENT CONCRETE DRIVEWAY PAVEMENT, 7" | SQ YD | 108 | 108 | |
| 44000100 | PAVEMENT REMOVAL | SQ YD | 910 | 910 | |
| 44000200 | DRIVEWAY PAVEMENT REMOVAL | SQ YD | 108 | 108 | |

14

2051

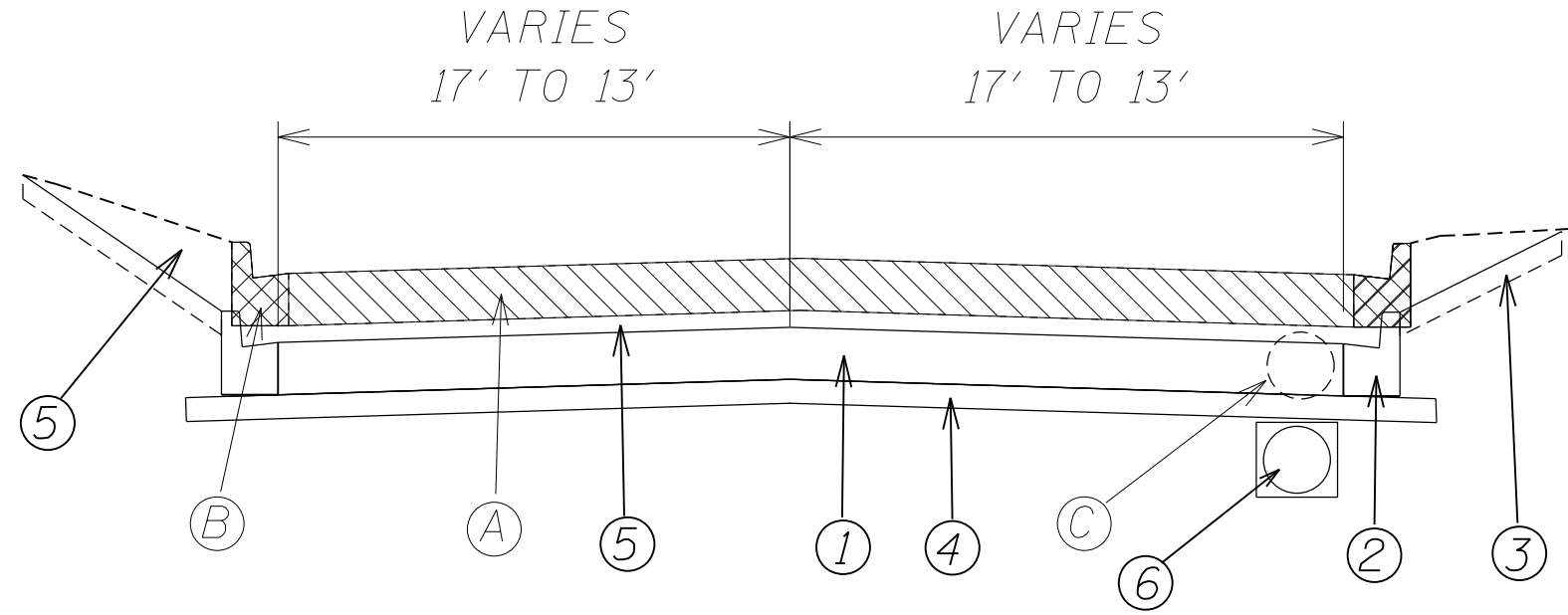
| CODE NO. | ITEM | UNIT | TOTAL QUANTITY | URBAN | |
|------------|---|--------|----------------|-------------|------|
| | | | | CONST. CODE | |
| | | | | 100% STATE | 0005 |
| 44000500 | COMBINATION CURB AND GUTTER REMOVAL | FOOT | 520 | 520 | |
| 54248510 | CONCRETE COLLAR | CU YD | 0.4 | 0.4 | |
| 60108501 | PIPE UNDERDRAINS, TYPE 3 | FOOT | 260 | 260 | |
| 60603800 | COMBINATION CONCRETE CURB AND GUTTER, TYPE B-6.12 | FOOT | 520 | 520 | |
| 67100100 | MOBILIZATION | L SUM | 1 | 1 | |
| 70101835 | TRAFFIC CONTROL AND PROTECTION, STANDARD BLR 22 | L SUM | 1 | 1 | |
| 70106800 | CHANGEABLE MESSAGE SIGN | CAL MO | 3.75 | 3.75 | |
| * 78001110 | PAINT PAVEMENT MARKING - LINE 4" | FOOT | 1040 | 1040 | |
| X6023500 | INLETS, TYPE A, WITH SALVAGED FRAME AND GRATE | EACH | 1 | 1 | |
| Z0013798 | CONSTRUCTION LAYOUT | L SUM | 1 | 1 | |
| Z0048665 | RAILROAD PROTECTIVE LIABILITY INSURANCE | L SUM | 1 | 1 | |
| Z0056644 | STORM SEWERS, TYPE 1, WATER MAIN QUALITY PIPE, 8" | FOOT | 70 | 70 | |

*

12

* SPECIALTY ITEM

| | | | | | | | | | | | |
|-------------------------------|-----------------------------|------------|-----------|---|------------------------------|---------------------------|---------|----------|-----------------|--------------|--|
| FILE NAME : 68004 plan.dgn | USER NAME : aubreyga | DESIGNED - | REVISED - | STATE OF ILLINOIS DEPARTMENT OF TRANSPORTATION | SUMMARY OF QUANTITIES | F.A.P. RTE. | SECTION | COUNTY | TOTAL SHEETS | SHEET NO. | |
| | PLOT SCALE * 40.0000' / in. | DRAWN - | REVISED - | | | 318 | 36-1-4 | TAZEWELL | 15 | 4 | |
| | PLOT DATE * 4/1/2016 | CHECKED - | REVISED - | | | CONTRACT NO. 68004 | | | | | |
| | | DATE - | REVISED - | | | ILLINOIS FED. AID PROJECT | | | | | |



BUSINESS 24
TYPICAL SECTIONS
STA 13+40 to 16+00

EXISTING

- Ⓐ PAVEMENT REMOVAL
- Ⓑ CONCRETE CURB AND GUTTER REMOVAL
- Ⓒ EXISTING PIPE UNDERDRAIN

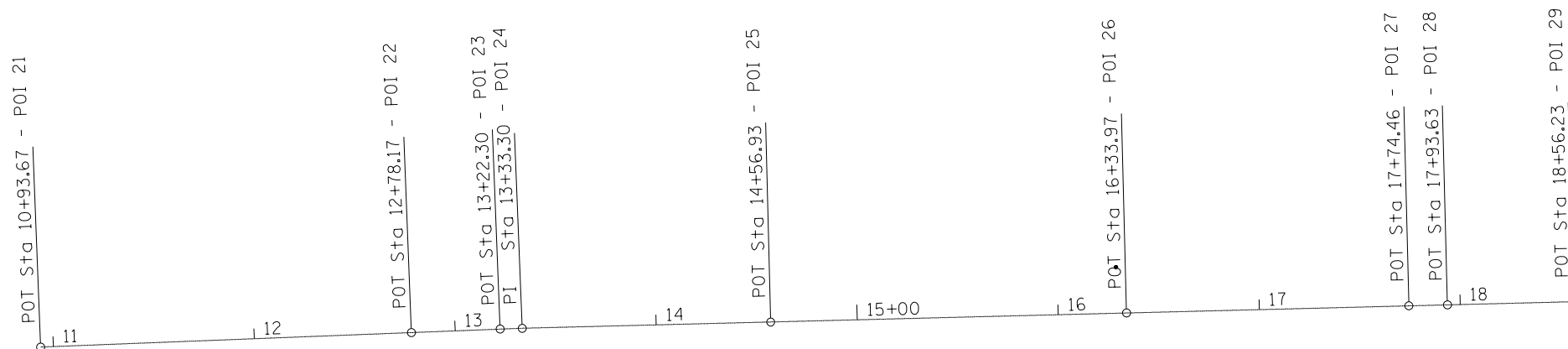
PROPOSED

- ① PCC PAVEMENT - 8³/₄"
- ② CCC&G - TY B 6.12
- ③ TOPSOIL, FURNISH AND PLACE - 4"
- ④ SUB BASE GRANULAR MATERIAL, TY A*
- ⑤ EARTH EXCAVATION
- ⑥ PIPE UNDERDRAIN, TYPE 3
- ⑦ GEOTECHNICAL FABRIC FOR GROUND STABILIZATION

*AFTER EXCAVATION FOR PROPOSED SUBGRADE, THE REMAINING EXISTING SUB BASE GRANULAR MATERIAL, TY A, SHALL BE CHECKED FOR A 4" DEPTH. IF ADDITIONAL EXCAVATION AND/OR SUBBASE GRANULAR MATERIAL IS NEEDED, IT SHALL BE PAID FOR USING ARTICLE 109.04. IF EXISTING SUB BASE IS 4" OR MORE IN DEPTH, NO ADDITIONAL SUBBASE EXCAVATION OR PROPOSED SUBBASE GRANULAR MATERIAL, TYPE A WILL BE REQUIRED

| | | | | | | | | | | | | |
|----------------------------|-----------------------------|------------|-----------|---|-------------------------------------|--------|----------|--------------------|---------|--------|--------------|-----------|
| FILE NAME = 68D04 plan.dgn | USER NAME = aubreys | DESIGNED - | REVISED - | STATE OF ILLINOIS DEPARTMENT OF TRANSPORTATION | BUS 24 TYPICAL SECTIONS | | | F.A.P. RTE. | SECTION | COUNTY | TOTAL SHEETS | SHEET NO. |
| Default | PLOT SCALE = 40.0000' / in. | DRAWN - | REVISED - | | 318 | 36-1-4 | TAZEWELL | 15 | 5 | | | |
| | PLOT DATE = 4/1/2016 | CHECKED - | REVISED - | | SCALE: SHEET OF SHEETS STA. TO STA. | | | CONTRACT NO. 68D04 | | | | |
| | | DATE - | REVISED - | | ILLINOIS FED. AID PROJECT | | | | | | | |

BM 901
 CHIS. '+' ON S.W.
 BASE BOLT ON KOURI'S
 RESTAURANT SIGN
 ELEV. = 732.16

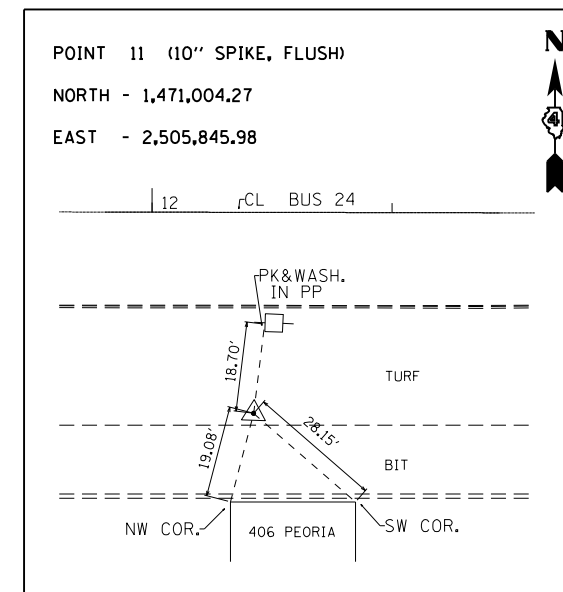
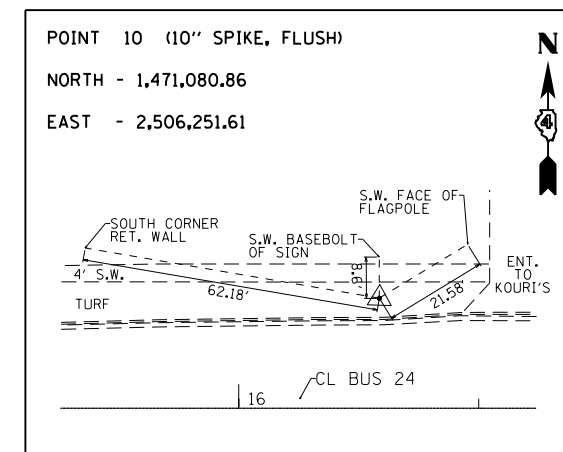


Chain US24BUSEXCL contains:
 21 22 23 24 25 26 27 28 29

Beginning chain US24BUSEXCL description

| | | | | | | |
|---|---|--------------|---|--------------|-----|----------|
| Point 21 | N | 1,471,041.15 | E | 2,505,716.86 | Sta | 10+93.67 |
| Course from 21 to 22 N 87° 45' 55.11" E Dist 184.50 | | | | | | |
| Point 22 | N | 1,471,048.34 | E | 2,505,901.21 | Sta | 12+78.17 |
| Course from 22 to 23 N 87° 45' 55.11" E Dist 44.13 | | | | | | |
| Point 23 | N | 1,471,050.06 | E | 2,505,945.31 | Sta | 13+22.30 |
| Course from 23 to 24 N 87° 45' 55.11" E Dist 11.00 | | | | | | |
| Point 24 | N | 1,471,050.49 | E | 2,505,956.30 | Sta | 13+33.30 |
| Course from 24 to 25 N 88° 33' 16.68" E Dist 123.63 | | | | | | |
| Point 25 | N | 1,471,053.61 | E | 2,506,079.89 | Sta | 14+56.93 |
| Course from 25 to 26 N 88° 33' 16.68" E Dist 177.04 | | | | | | |
| Point 26 | N | 1,471,058.08 | E | 2,506,256.88 | Sta | 16+33.97 |
| Course from 26 to 27 N 88° 33' 16.68" E Dist 140.49 | | | | | | |
| Point 27 | N | 1,471,061.62 | E | 2,506,397.32 | Sta | 17+74.46 |
| Course from 27 to 28 N 88° 33' 16.68" E Dist 19.17 | | | | | | |
| Point 28 | N | 1,471,062.10 | E | 2,506,416.48 | Sta | 17+93.63 |
| Course from 28 to 29 N 88° 33' 16.68" E Dist 62.60 | | | | | | |
| Point 29 | N | 1,471,063.68 | E | 2,506,479.07 | Sta | 18+56.23 |

Ending chain US24BUSEXCL description



| | | | |
|---------------------------|-----------------------------|------------|-----------|
| FILE NAME = 68D04 pln.dgn | USER NAME = aubreys | DESIGNED - | REVISED - |
| Default | | DRAWN - | REVISED - |
| | PLOT SCALE = 48.0000' / in. | CHECKED - | REVISED - |
| | PLOT DATE = 4/1/2016 | DATE - | REVISED - |

STATE OF ILLINOIS
 DEPARTMENT OF TRANSPORTATION

ALIGNMENT, TIES, AND BENCHMARK

SCALE: SHEET OF SHEETS STA. TO STA.

| | | | | |
|---------------------------|---------|----------|--------------|-----------|
| F.A.P. RTE. | SECTION | COUNTY | TOTAL SHEETS | SHEET NO. |
| 318 | 36-1-4 | TAZEWELL | 15 | 6 |
| CONTRACT NO. 68D04 | | | | |
| ILLINOIS FED. AID PROJECT | | | | |

| LOCATION | PAVEMENT REMOVAL | PORTLAND CEMENT CONCRETE PAVEMENT, 8 - 3/4, JOINTED | DRIVEWAY PAV REM | PCC DRIVEWAY PAVEMENT, 7" | EARTH EXCAVATION | CCC&G REMOVAL | CCC&G TYPE B-6.12 | SUB BASE GRAN MAT, TYPE B | GEOTECH FAB FOR GROUND STAB | AGGREGATE TEMP ACCESS |
|--------------------|------------------|---|------------------|---------------------------|------------------|---------------|-------------------|---------------------------|-----------------------------|-----------------------|
| | (SQ YD) | (SQ YD) | (SQ YD) | (SQ YD) | (CU YD) | (FOOT) | (FOOT) | (TON) | (SQ YD) | (TON) |
| BUS 24 | | | | | | | | | | |
| STA 13+40 TO 16+00 | 910 | 910 | 108 | 108 | 205 | 520 | 520 | 240 | 1050 | 30 |
| TOTAL | 910 | 910 | 108 | 108 | 205 | 520 | 520 | 240 | 1050 | 30 |

| LOCATION | MOBILIZATION | TRAFFIC CONTROL AND PROT STANDARD BLR 22 | CHANGEABLE MESSAGE SIGN* | PAINT PAVEMENT MARKING, LINE 4" |
|--------------------|--------------|--|--------------------------|---------------------------------|
| | (L. SUM) | (L. SUM) | (CAL. MO.) | (FOOT) |
| BUS 24 | | | | |
| STA 13+40 TO 16+00 | 1 | 1 | 3.75 | 1040 |
| TOTAL | 1 | 1 | 3.75 | 1040 |

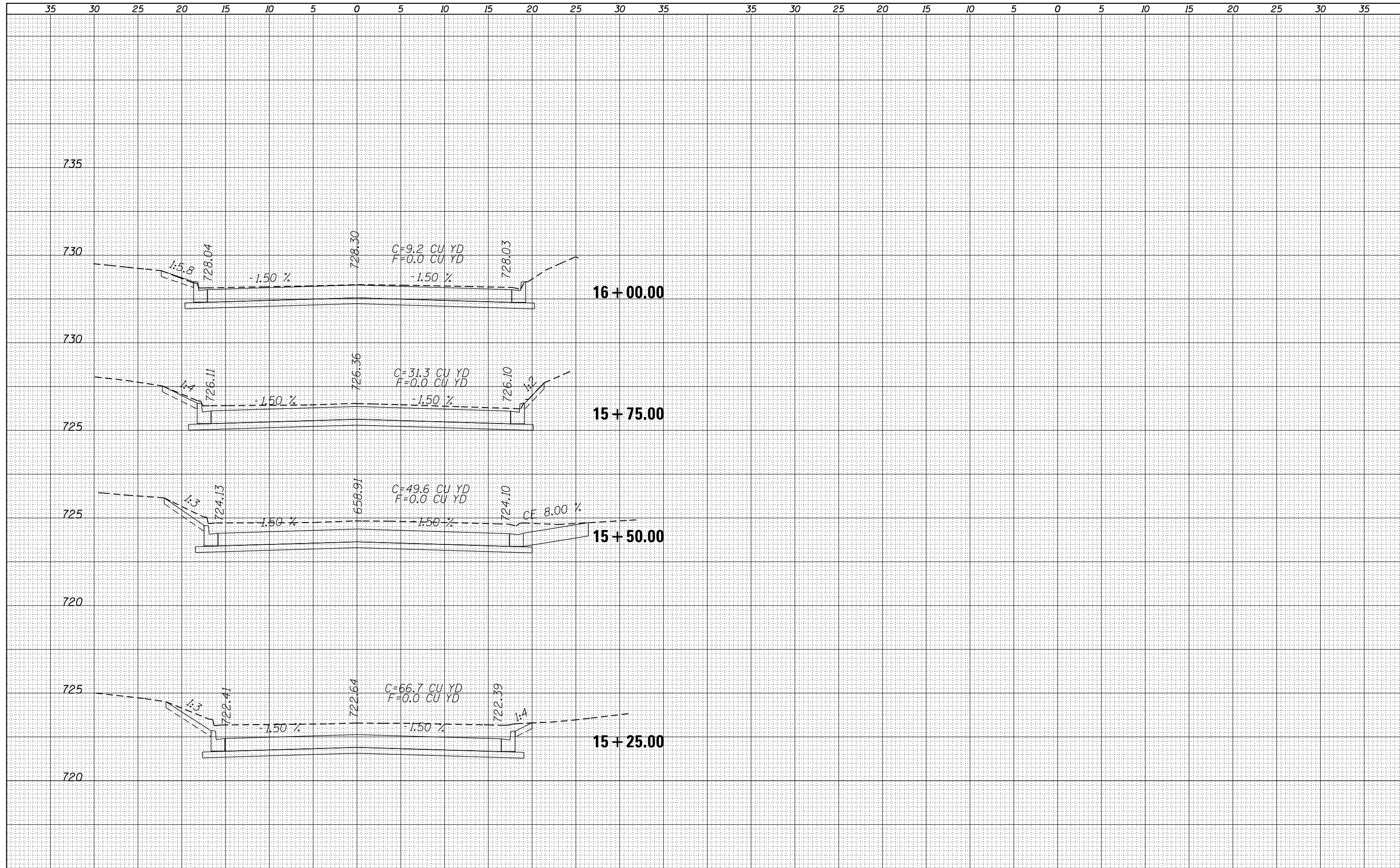
* CHANGEABLE MESSAGE SIGN WILL REQUIRE THREE SIGNS AT 5 WEEKS EACH (1.25 MONTHS) - TOTALING 3.75 CAL MO

| LOCATION | TOPSOIL FURNISH & PLACE, 4" | SEEDING CLASS 2A | NITROGEN FERTILIZER NUTRIENT | PHOSPHORUS FERTILIZER NUTRIENT | POTASSIUM FERTILIZER NUTRIENT | EROSION CONTROL BLANKET |
|--------------------|-----------------------------|------------------|------------------------------|--------------------------------|-------------------------------|-------------------------|
| | (SQ YD) | (ACRE) | (POUND) | (POUND) | (POUND) | (SQ YD) |
| BUS 24 | | | | | | |
| STA 13+40 TO 16+00 | 175 | 0.04 | 3.6 | 3.6 | 3.6 | 175 |
| TOTAL | 175 | 0.04 | 3.6 | 3.6 | 3.6 | 175 |

| LOCATION | INLET, TYPE A SALVAGED FRAME AND GRATE | STORM SEWER, TYPE 1 WATER MAIN QUALITY - 8" | PIPE UNDERDRAINS TYPE 3 | CONCRETE COLLAR |
|--------------------|--|---|-------------------------|-----------------|
| | (EACH) | (FOOT) | (FOOT) | (CU YD) |
| BUS 24 | | | | |
| STA 13+40 TO 16+00 | | | 260 | |
| STA 14+08 RT | 1 | | | |
| STA 13+40 TO 14+08 | | 70 | | |
| STA 13+40 | | | | 0.4 |
| TOTAL | 1 | 0 | 260 | 0 |

| | |
|--------------|---------------|
| DATE | |
| BY | |
| FINAL SURVEY | SURVEYED |
| NOTE BOOK | PLOTTED |
| NO. | TEMPLATE |
| | AREAS CHECKED |

| | |
|-----------------|---------------|
| DATE | |
| BY | |
| ORIGINAL SURVEY | SURVEYED |
| NOTE BOOK | PLOTTED |
| NO. | TEMPLATE |
| | AREAS CHECKED |



FILE NAME = 68004 plan.dgn
 Default

| | | |
|-----------------------------|------------|-----------|
| USER NAME = aubreys | DESIGNED - | REVISED - |
| PLOT SCALE = 40.0000' / in. | DRAWN - | REVISED - |
| PLOT DATE = 4/1/2016 | CHECKED - | REVISED - |
| | DATE - | REVISED - |

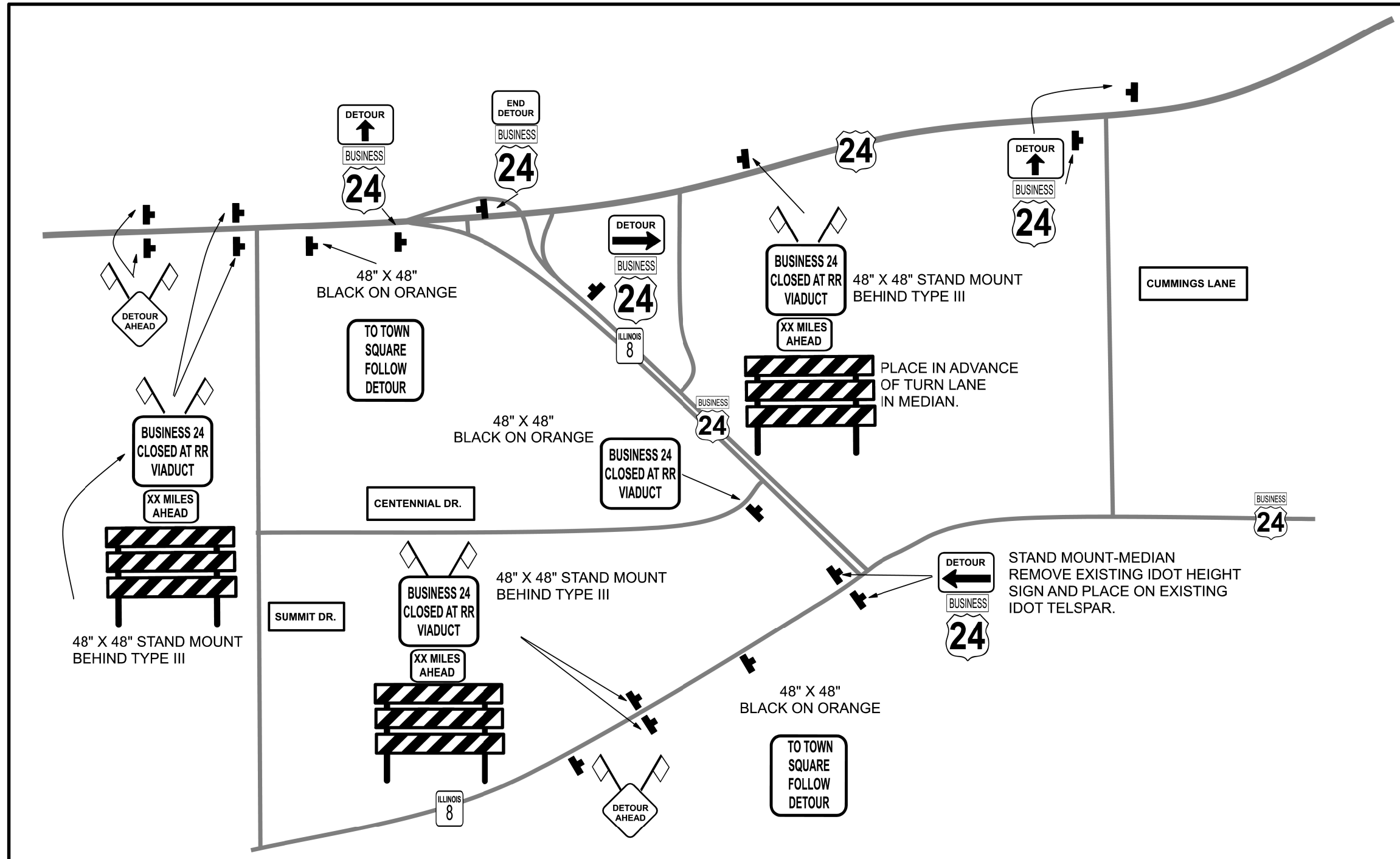
**STATE OF ILLINOIS
 DEPARTMENT OF TRANSPORTATION**

**BUSINESS 24
 CROSS SECTIONS**

SCALE: SHEET OF SHEETS STA. 13+40.00 TO STA. 16+25.00

| | | | | |
|---------------------------|---------|----------|--------------|-----------|
| F.A.P. RTE. | SECTION | COUNTY | TOTAL SHEETS | SHEET NO. |
| 318 | 36-1-4 | TAZEWELL | 15 | 10 |
| CONTRACT NO. 68004 | | | | |
| ILLINOIS FED. AID PROJECT | | | | |

DETOUR ROUTE



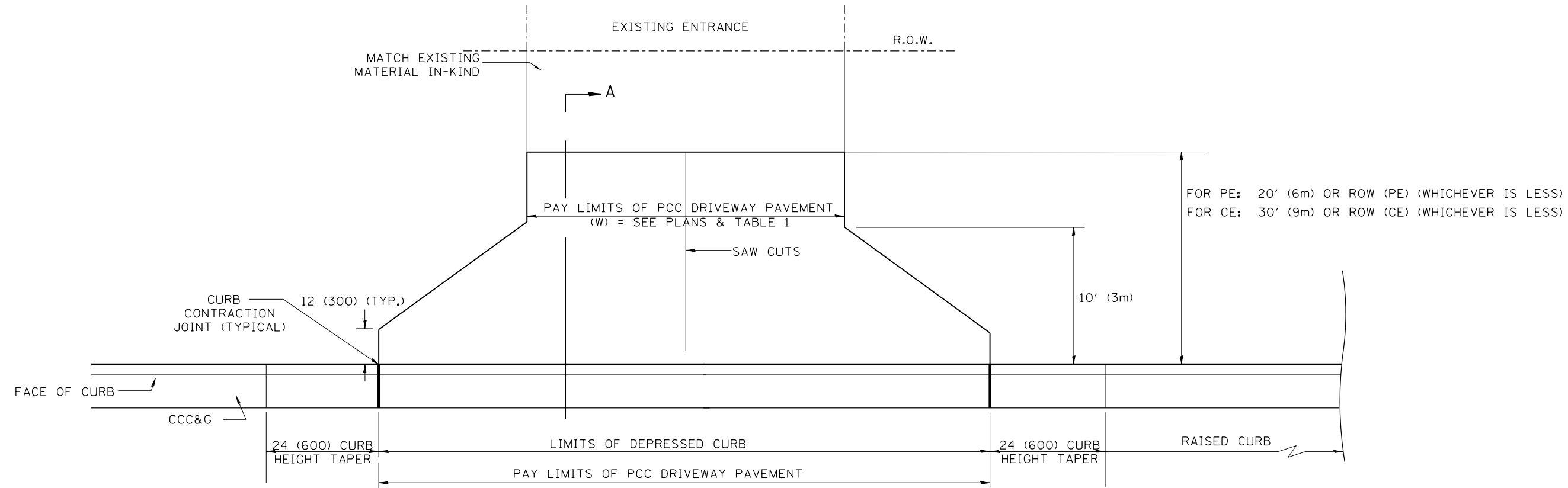
| | | | |
|---------------------------|----------------------|------------|-----------|
| FILE NAME = 68D04 pln.dgn | USER NAME = aubreygs | DESIGNED - | REVISED - |
| | | DRAWN - | REVISED - |
| | | CHECKED - | REVISED - |
| | | DATE - | REVISED - |

STATE OF ILLINOIS
DEPARTMENT OF TRANSPORTATION

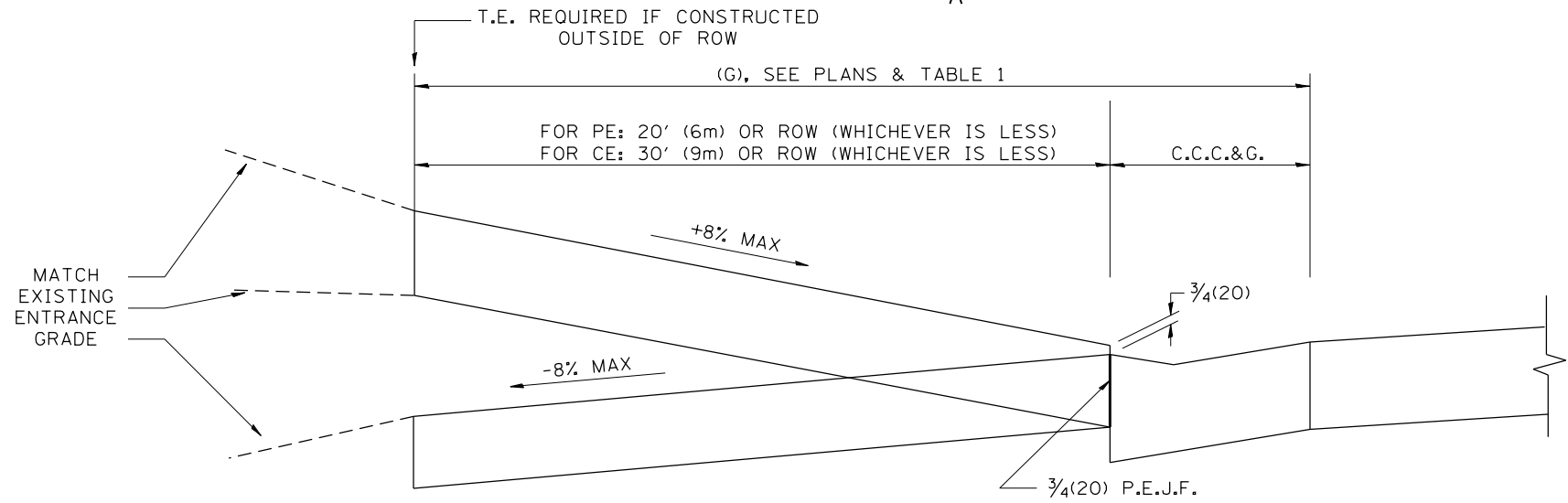
DETOUR DETAIL

SCALE: SHEET OF SHEETS STA. TO STA.

| F.A.P. RTE. | SECTION | COUNTY | TOTAL SHEETS | SHEET NO. |
|---------------------------|---------|----------|--------------|-----------|
| 318 | 36-1-4 | TAZEWELL | 15 | 11 |
| CONTRACT NO. 68D04 | | | | |
| ILLINOIS FED. AID PROJECT | | | | |



PLAN



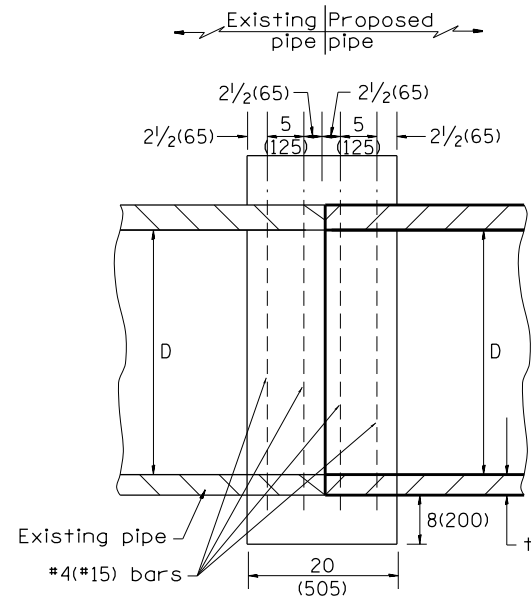
SECTION A-A

GENERAL NOTES

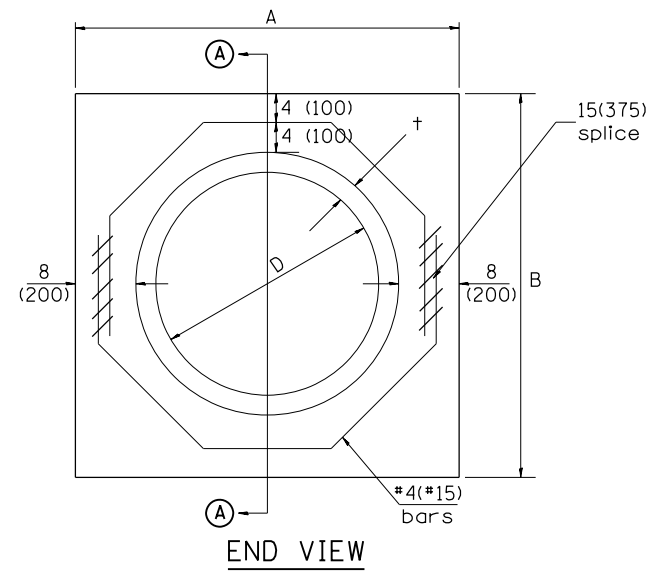
1. COMBINATION CONCRETE CURB & GUTTER SHALL BE DEPRESSED IN ACCORDANCE WITH STANDARD 606001.
2. C.C.C. & G. WILL BE MEASURED FOR PAYMENT AS SPECIFIED IN ARTICLE 606.13 OF THE STANDARD SPECIFICATIONS.
3. C.C.C. & G. CONSTRUCTION JOINTS WILL BE AS SHOWN ON STANDARD 606001.
4. EXCEPTIONS TO THE RADIUS FLARE/PROPERTY LINE RELATIONSHIP ARE AS SHOWN IN THE PLANS FOR COMMON ENTRANCES, WITH JOINTLY EXECUTED ACCESS PERMITS.

| ELEMENT | NON-COMMERCIAL | | COMMERCIAL | | | |
|---------------------------------|----------------|----------------|-----------------|-----------------|-----------------|-----------------|
| | | | 1-WAY OPERATION | | 2-WAY OPERATION | |
| | | | | | | |
| WIDTH (W) | 12' (3.6m)MIN. | 24' (7.2m)MAX. | 14' (4.3m)MIN. | 24' (7.2m)MAX. | 24' (7.2m)MIN. | 35' (10.7m)MAX. |
| RADIUS EQUIVALENT 1:1 FLARE (F) | 5' (1.5m)MIN. | 25' (7.6m)MAX. | 15' (4.6m)MIN. | 40' (12.0m)MAX. | 15' (4.6m)MIN. | 40' (12.0m)MAX. |
| MAX. GRADE (G) | 8% | | 6% | | | |

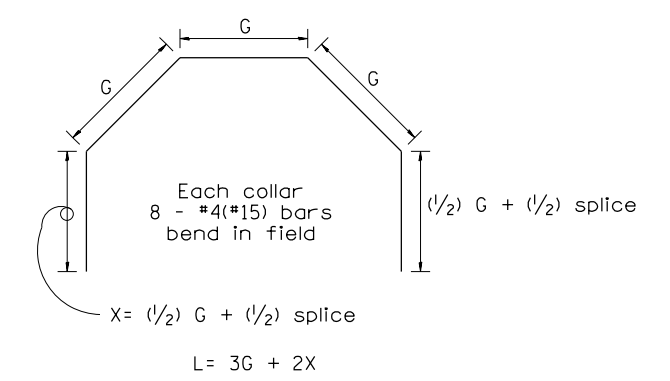
All dimensions are in inches (millimeters) unless otherwise noted.



SECTION A - A



END VIEW



| Each Collar | | | | | | | | | |
|-------------|------------|--------------|--------------|--------------------------|--|---------------------------------------|---------------|---------|--|
| | | | | | Reinforcement Bars | | | | |
| D | t | A | B | CL. SI CONC. | G | X | L | Weight | |
| in (mm) | in (mm) | ft (m) | ft (m) | cu.yd. (m ³) | in (mm) | in (mm) | ft (m) | lb (kg) | |
| 12 (300) | 2.00 (51) | 2.67 (0.814) | 2.67 (0.814) | 0.4 (0.270) | 9 ¹⁵ / ₁₆ (253) | 12 ⁷ / ₁₆ (317) | 4.57 (1.393) | 24 (11) | |
| 15 (375) | 2.25 (57) | 2.96 (0.902) | 2.96 (0.902) | 0.4 (0.315) | 11 ³ / ₈ (290) | 13 ³ / ₁₆ (335) | 5.05 (1.541) | 27 (12) | |
| 18 (450) | 2.50 (64) | 3.25 (0.991) | 3.25 (0.991) | 0.5 (0.362) | 12 ¹³ / ₁₆ (327) | 13 ⁷ / ₈ (354) | 5.54 (1.689) | 30 (14) | |
| 21 (525) | 2.75 (70) | 3.54 (1.079) | 3.54 (1.079) | 0.5 (0.411) | 14 ¹ / ₄ (364) | 14 ⁵ / ₈ (372) | 6.02 (1.836) | 32 (15) | |
| 24 (600) | 3.00 (76) | 3.83 (1.167) | 3.84 (1.167) | 0.6 (0.460) | 15 ¹¹ / ₁₆ (401) | 15 ⁵ / ₁₆ (391) | 6.51 (1.984) | 35 (16) | |
| 27 (675) | 3.25 (83) | 4.13 (1.259) | 4.13 (1.259) | 0.7 (0.516) | 17 ¹ / ₄ (438) | 16 ¹ / ₁₆ (409) | 6.99 (2.131) | 37 (17) | |
| 30 (750) | 3.50 (89) | 4.42 (1.347) | 4.42 (1.347) | 0.7 (0.570) | 18 ¹¹ / ₁₆ (475) | 16 ³ / ₄ (428) | 7.48 (2.279) | 40 (18) | |
| 33 (825) | 3.75 (95) | 4.71 (1.436) | 4.71 (1.436) | 0.8 (0.624) | 20 ¹ / ₈ (512) | 17 ¹ / ₂ (446) | 7.96 (2.426) | 43 (19) | |
| 36 (900) | 4.00 (102) | 5.00 (1.524) | 5.00 (1.524) | 0.9 (0.682) | 21 ⁹ / ₁₆ (549) | 18 ³ / ₁₆ (465) | 8.44 (2.574) | 45 (20) | |
| 42 (1050) | 4.50 (114) | 5.58 (1.701) | 5.58 (1.701) | 1.0 (.800) | 24 ⁷ / ₁₆ (622) | 19 ³ / ₄ (501) | 9.41 (2.869) | 50 (23) | |
| 48 (1200) | 5.00 (127) | 6.17 (1.881) | 6.17 (1.881) | 1.2 (0.930) | 27 ⁵ / ₁₆ (696) | 21 ³ / ₁₆ (538) | 10.38 (3.164) | 55 (25) | |

GENERAL NOTES

1. THE COLLAR SHALL BE CONSTRUCTED ENTIRELY OF CLASS SI CONCRETE IN ACCORDANCE WITH THE APPLICABLE PORTIONS OF SECTION 503 OF THE STANDARD SPECIFICATIONS. REINFORCEMENT BARS SHALL CONFORM TO SECTION 508.
2. This work shall be paid for by the cubic yard (cubic meter) for CONCRETE COLLAR and by the pound (kg) for REINFORCEMENT BARS.

| QUANTITIES | |
|----------------------|--------|
| CALC. BY: R. J. D. | 2-2-98 |
| CHECKED BY: R. D. H. | 2-6-98 |
| | DATE: |

QUANTITY CALCULATIONS ARE ON FILE AT THE DISTRICT 4 OFFICE; BUREAU OF PROJECT IMPLEMENTATION; DOCUMENTATION SECTION

All dimensions are in inches (millimeters) unless otherwise noted.

| | | | | | | | | | | | | | |
|----------|---|------|----------|--------------------------------------|------|---|--|---|---------|----------|--------------|-----------|--|
| 01-01-97 | RENUM. B-8.03, NEW REVISION BOX, REVISED | T.P. | 09-01-00 | CORRECT WEIGHT | J.A. | STATE OF ILLINOIS DEPARTMENT OF TRANSPORTATION | PIPE CULVERT EXTENSION COLLAR (WITHOUT END SECTION) | F.A.P. RTE. | SECTION | COUNTY | TOTAL SHEETS | SHEET NO. | |
| | TITLE BOX, ADDED QUANTITY CALCULATION BOX | | 10-16-06 | REV. TO 2007 SPEC., CORRECT mm UNITS | M.A. | | | 318 | 36-1-4 | TAZEWELL | 15 | 15 | |
| 04-01-97 | CORRECT BAR | J.A. | 2-15-11 | ADDED GENERAL NOTE #2 | R.D. | | | CONTRACT NO. 68D04 | | | | | |
| 02-10-98 | REVISE QUANTITIES | J.A. | | | | | | FED. ROAD DIST. NO. ILLINOIS FED. AID PROJECT | | | | | |

NOT TO SCALE

CADD STD. 542016-D4