

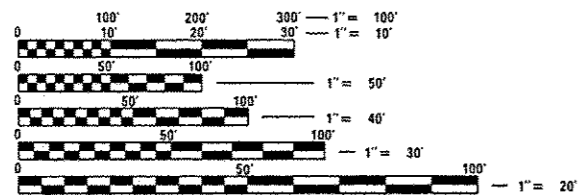
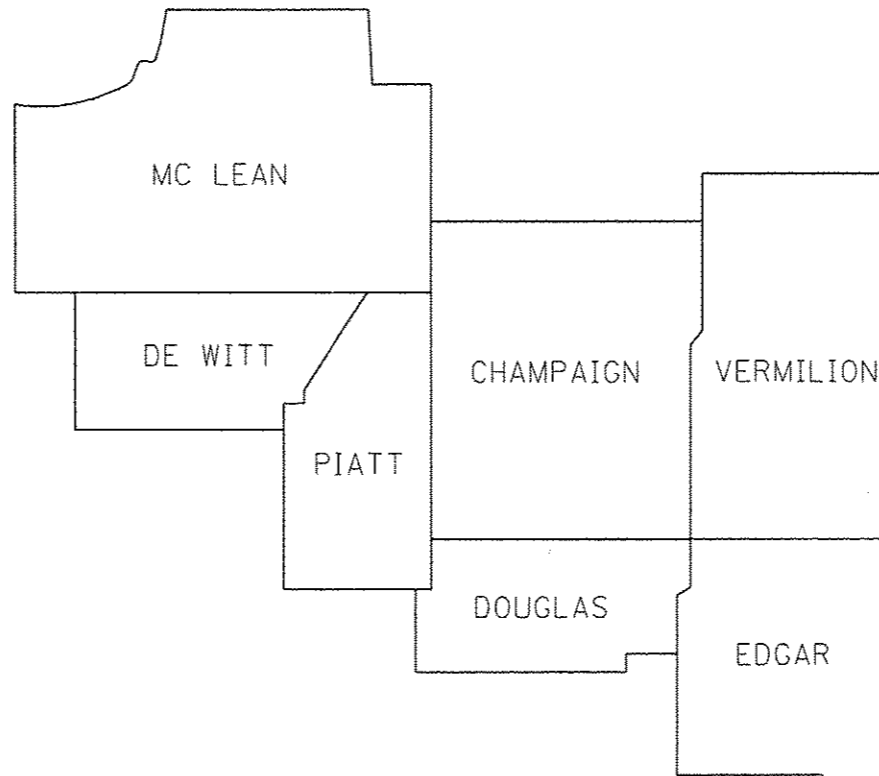
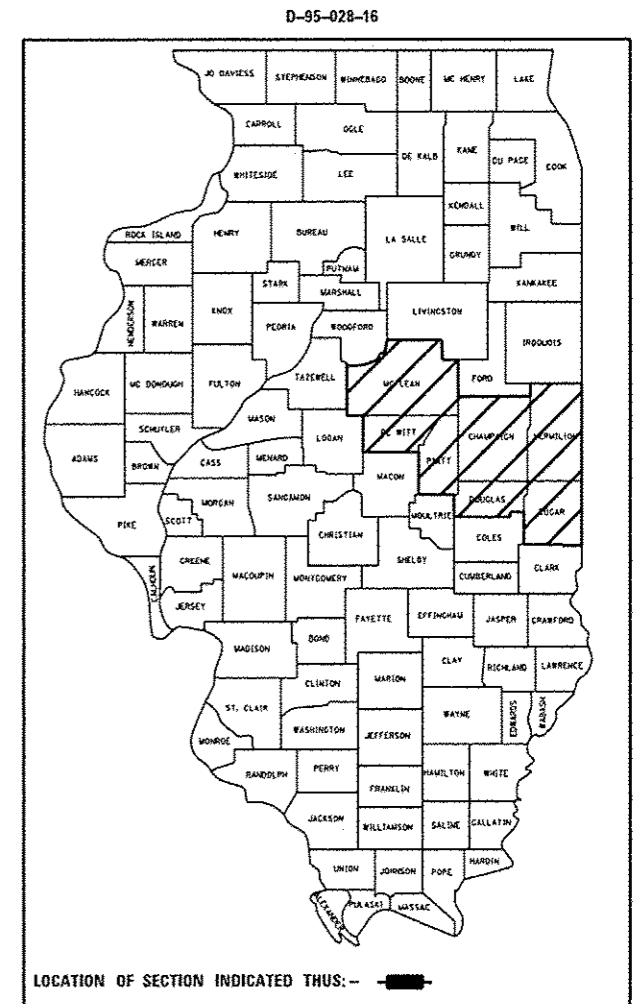
STATE OF ILLINOIS
DEPARTMENT OF TRANSPORTATION
DIVISION OF HIGHWAYS

**PROPOSED
HIGHWAY PLANS**

VARIOUS ROUTES
SECTION D5 SWZT 2016-1
SMART TRAFFIC MONITORING SYSTEM
PROJECT: ACHSIP-000V(057)
VARIOUS COUNTIES

C-95-028-16

F.A. RTE.	SECTION	COUNTY	TOTAL SHEETS	SHEET NO.
VAR	D5 SWZT 2016-1	VARIOUS	4	1
		ILLINOIS	CONTRACT NO. 70B90	



FULL SIZE PLANS HAVE BEEN PREPARED USING STANDARD ENGINEERING SCALES. REDUCED SIZED PLANS WILL NOT CONFORM TO STANDARD SCALES. IN MAKING MEASUREMENTS ON REDUCED PLANS, THE ABOVE SCALES MAY BE USED.

J.U.L.I.E.
JOINT UTILITY LOCATION INFORMATION FOR EXCAVATION
1-800-892-0123
OR 811

PROJECT ENGINEER: JASON W. STULTS
DESIGN SQUAD LEADER: RUSTIN B. KEYS
DESIGNER: ANDREW B.V. BRINKERHOFF
PHONE: (217) 465-4181

CONTRACT NO. 70B90

STATE OF ILLINOIS
DEPARTMENT OF TRANSPORTATION
DIVISION OF HIGHWAYS

SUBMITTED May 19, 2016
Kenneth G. Gammath
REGION 3 ENGINEER

May 16, 2016
Maureen M. Addis, P.E.
ENGINEER OF DESIGN AND ENVIRONMENT

May 16, 2016
Amir Osman, P.E.
DIRECTOR OF HIGHWAYS, CHIEF ENGINEER

**PRINTED BY THE AUTHORITY
OF THE STATE OF ILLINOIS**

STANDARD
NUMBER

DESCRIPTION

701101-05 OFF-RD OPERATIONS, MULTILANE, 15' TO 24" FROM PAVEMENT EDGE
 701106-02 OFF-RD OPERATIONS, MULTILANE, MORE THAN 15' AWAY
 701400-08 APPROACH TO LANE CLOSURE, FREEWAY/EXPRESSWAY
 701428-01 TRAFFIC CONTROL SETUP AND REMOVAL FREEWAY/EXPRESSWAY
 701901-05 TRAFFIC CONTROL DEVICES

GENERAL NOTES

G.N.-100
 ENGLISH UNITS OF MEASUREMENT SHALL GOVERN OVER AND SUPERSEDE ANY METRIC UNITS
 SHOWN IN THIS CONTRACT. WHERE INCLUDED, METRIC UNITS ARE FOR INFORMATION ONLY.

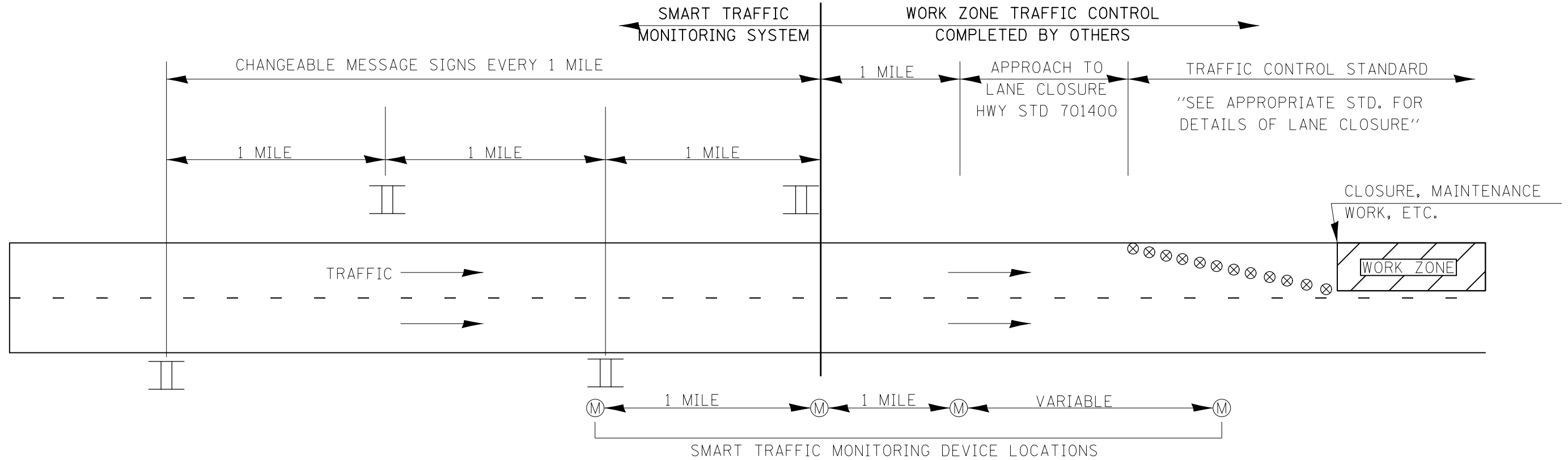
FILE NAME *	USER NAME = brinkerhoffbv	DESIGNED -	REVISED -	STATE OF ILLINOIS DEPARTMENT OF TRANSPORTATION	GENERAL NOTES AND STANDARDS	F.A. RTE.	SECTION	COUNTY	TOTAL SHEETS	SHEET NO.	
pw\N1884EB10\INTEG\Illinois.gov\PI\DOT\Documents\DOT Offices\District 5\Projects\057	DRAWN Data\Design\0978890-Sht-Plans.dgn	CHECKED -	REVISED -			VAR	05 SWZT 2016-1	VARIOUS	4	2	
PLOT SCALE = 100.0000' / 1"		DATE -	REVISED -			SCALE: SHEET 1 OF 1 SHEETS STA. TO STA.					
MODELNAME	PLOT DATE = 3/3/2016					ILLINOIS FED. AID PROJECT CONTRACT NO. 70B90					

SUMMARY OF QUANTITIES

SUMMARY OF QUANTITIES				CONSTRUCTION TYPE CODE			SUMMARY OF QUANTITIES				CONSTRUCTION TYPE CODE		
CODE NO	ITEM	UNIT	TOTAL QUANTITIES	90% FEDERAL 10% STATE 0021			CODE NO	ITEM	UNIT	TOTAL QUANTITIES			
X7010237	CHANGEABLE MESSAGE SIGN, SPECIAL	CAL DA	896	896									
X8570001	SMART TRAFFIC MONITORING SYSTEM	CAL DA	224	224									
X9700004	SMART TRAFFIC MONITORING DEVICE	CAL DA	896	896									
Z0008759	CALL OUT	EACH	13	13									
Z0008760	EMERGENCY WORK CALL OUT	EACH	3	3									

5

SMART TRAFFIC MONITORING SYSTEM (CALL-OUT) (TYPICAL EXAMPLE)



NOTES:

- ① ACTUAL LOCATION OF SMART MONITORING DEVICES SHALL BE BASED ON MANUFACTURER'S SPECIFICATIONS AND RECOMMENDATIONS ALONG WITH THE SPECIAL PROVISIONS AND AS DIRECTED BY THE ENGINEER.
- ② MODIFICATIONS MAY BE NECESSARY TO ACCOMODATE SPECIFIC CLOSURES. ALL CHANGES WILL BE APPROVED BY THE ENGINEER.

LEGEND	
II	CHANGEABLE MESSAGE SIGN LOCATIONS
Ⓜ	SMART TRAFFIC MONITORING DEVICE LOCATION
⊗	DRUM/BARRICADES PER APP. STANDARD (BY OTHERS)