

STATE OF ILLINOIS  
DEPARTMENT OF TRANSPORTATION  
DIVISION OF HIGHWAYS

**PROPOSED  
HIGHWAY PLANS**

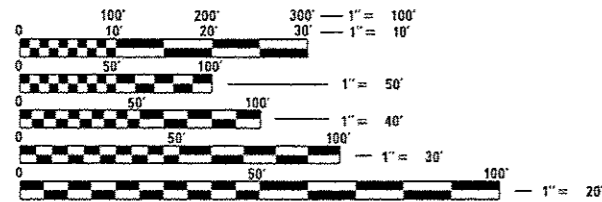
FAP ROUTE 714 (IL. 48)  
SECTION (135) T, I-5

TYPE of IMPROVEMENT DRAINAGE, MISC  
CHRISTIAN COUNTY

C-96-031-16

FOR INDEX OF SHEETS, SEE SHEET NO. 2

FAP 714 (IL48) ADT  
3,150 (2015)  
SU = 13.54%  
MU = 6.25%

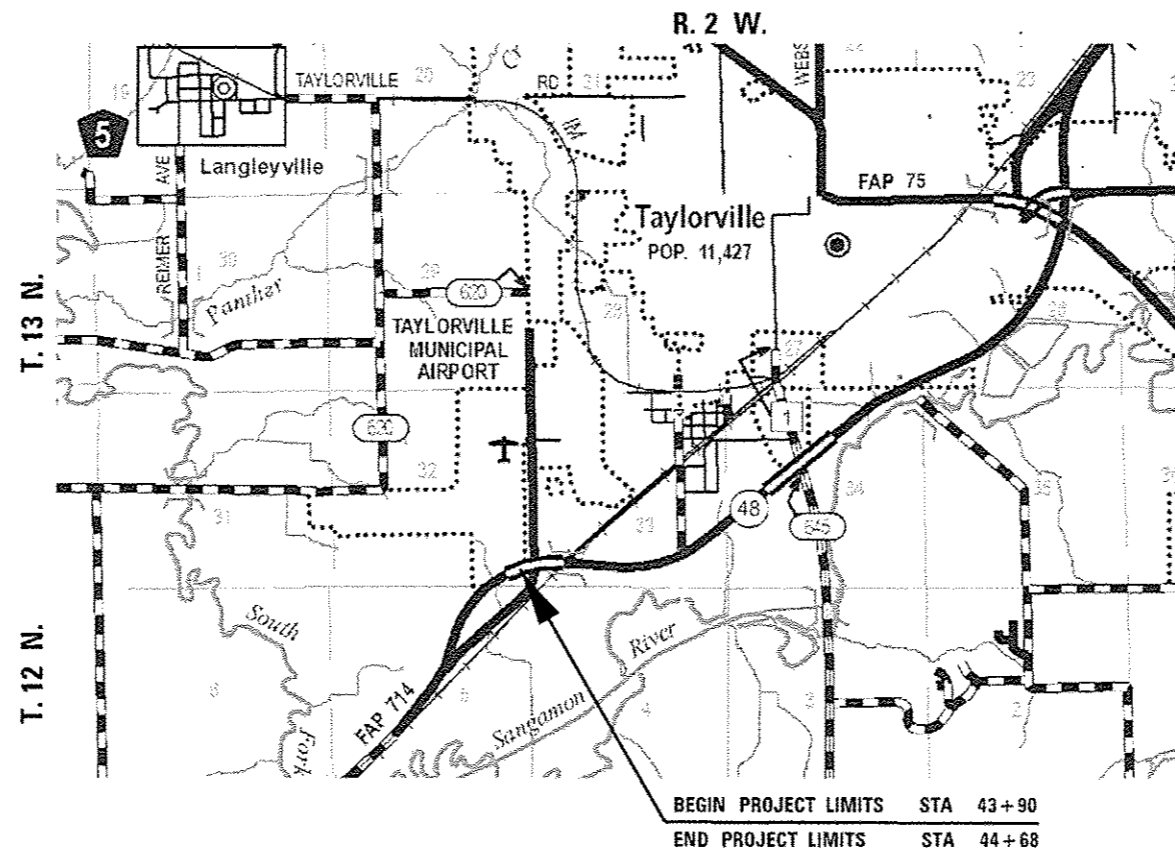


FULL SIZE PLANS HAVE BEEN PREPARED USING STANDARD ENGINEERING SCALES. REDUCED SIZED PLANS WILL NOT CONFORM TO STANDARD SCALES. IN MAKING MEASUREMENTS ON REDUCED PLANS, THE ABOVE SCALES MAY BE USED.

J.U.L.I.E.  
JOINT UTILITY LOCATION INFORMATION FOR EXCAVATION  
1-800-892-0123  
OR 811

PROJECT ENGINEER: KEITH DONOVAN (217)782-4761  
PROJECT MANAGER: ED KERN (217)524-7547

CONTRACT NO. 72118



F.A.P. RTE.	SECTION	COUNTY	TOTAL SHEETS	SHEET NO.
714	(135)T, I-5	CHRISTIAN	11	1
		ILLINOIS	CONTRACT NO. 72118	

D-96-031-16



STATE OF ILLINOIS  
DEPARTMENT OF TRANSPORTATION  
DIVISION OF HIGHWAYS

SUBMITTED March 24 2016

Shelley M. Scott  
DEPUTY DIRECTOR OF HIGHWAYS, REGION ENGINEER

Maureen M. Addis, P.E.  
ENGINEER OF DESIGN AND ENVIRONMENT

Osman Osman, P.E.  
DIRECTOR OF HIGHWAYS, CHIEF ENGINEER

PRINTED BY THE AUTHORITY  
OF THE STATE OF ILLINOIS

GROSS LENGTH = 68.0 FT. = 0.012 MILE  
NET LENGTH = 68.0 FT. = 0.012 MILE

**INDEX OF SHEETS**

SHT. NO.	DESCRIPTION
1	COVER SHEET
2	GENERAL NOTES & HIGHWAY STANDARDS
3	SUMMARY OF QUANTITIES
4	TYPICAL SECTION
5-6	SCHEDULE OF QUANTITIES
7	REMOVAL PLAN
8	PROPOSED PLAN
9	DRAINAGE PLAN
10	PAVEMENT MARKING DETAILS
11	CROSS SECTION

**HIGHWAY STANDARDS**

NO.	DESCRIPTION
000001-06	STANDARD SYMBOLS ABBREVIATIONS AND PATTERNS
001001-02	AREAS OF REINFORMENT BARS
001006	DECIMAL OF AN INCH AND OF A FOOT
280001-07	TEMPORARY EROSION CONTROL SYSTEMS
442201-03	CLASS C & D PATCHES
542301-03	PRECAST REINFORCED CONCRETE FLARED END SECTION
602401-03	MANHOLE TYPE A
602601-04	PRECAST REINFORCED CONCRETE FLAT SLAB TOP
604006-05	FRAME AND GRATE TYPE 3
606001-06	CONCRETE CURB TYPE B AND COMBINATION C & G
606301-04	PC CONCRETE ISLANDS AND MEDIANS
701006-05	OFF RD OPERATIONS, 2L, 2W 15' TO 24" FROM PAVEMENT EDGE
701201-04	LAND CLOSURE 2L, 2W, DAY ONLY SPEED > 45 MPH
701901-05	TRAFFIC CONTROL DEVICES
780001-05	TYPICAL PAVEMENT MARKINGS
782001-01	CURB REFLECTORS

① THE FOLLOWING MIXTURE REQUIREMENTS ARE APPLICABLE:

Location(s):	
Mixture Use(s):	Pavement Patching
PG:	PG 64-22
Design Air Voids:	4.0% @ N70
Mixture Composition:	IL 19.0
Friction Aggregate:	N/A
Quality Management:	OC/OA

GENERAL NOTES

- ② WHERE SECTION OR SUBSECTION MONUMENTS ARE ENCOUNTERED, THE ENGINEER SHALL BE NOTIFIED BEFORE SUCH MONUMENTS ARE REMOVED. THE CONTRACTOR SHALL PROTECT AND CAREFULLY PRESERVE ALL PROPERTY MARKS, MONUMENTS, AND PERMANENT SURVEY MARKERS UNTIL THE OWNER, AND AUTHORIZED SURVEYOR OR AGENT HAS WITNESSES OR OTHERWISE REFERENCED THEIR LOCATION.
- ③ ANY REFERENCE TO A STANDARD IN THE PLANS SHALL BE INTERPRETED TO MEAN THE EDITION, AS INDICATED BY THE SUB-NUMBER LISTED IN THE INDEX OF SHEETS, OR THE COPY OF THE STANDARD INCLUDED IN THE PLANS.
- ④ ALL OF THE DISTURBED AREAS WITHIN THE RIGHT OF WAY NOT COVERED BY SURFACING SHALL BE SEEDED. THIS SHALL BE INCLUDED IN COST OF CONSTRUCTION OPERATION.
- ⑤ IN ADDITION TO FIELD SURVEYS AND AERIAL SURVEYS, PLAN DIMENSIONS AND DETAILS RELATIVE TO THE EXISTING FACILITIES HAVE BEEN TAKEN FROM EXISTING PLANS AND ARE SUBJECT TO CONSTRUCTION VARIATIONS. IT SHALL BE THE CONTRACTORS RESPONSIBILITY TO VERIFY SUCH DIMENSIONS AND DETAILS IN THE FIELD. SUCH VARIATIONS SHALL NOT BE A CAUSE FOR ADDITIONAL COMPENSATIONS DUE TO A CHANGE IN THE SCOPE OF THE WORK, HOWEVER, THE CONTRACTOR WILL BE PAID FOR THE QUANTITY ACTUALLY FURNISHED AT THE UNIT PRICE BID FOR THE WORK.
- ⑥ BENCHMARK: (BM WS-62) CHSLD [ ] CENTER HDWL SW QUAD [L48 & SPRESSER ST (OLD HWY 48) @ APPROX STA 44+50 ELEV. 611.674
- ⑦ THIS SECTION SHALL BE CONSTRUCTED IN ACCORDANCE WITH THE PLANS. THE STANDARD SPECIFICATIONS FOR ROAD AND BRIDGE CONSTRUCTION ADOPTED APRIL 1, 2016, THE SUPPLEMENTAL SPECIFICATIONS AND RECURRING SPECIAL PROVISIONS, AND THE SPECIAL PROVISIONS INCLUDED IN THESE PLANS.
- ⑧ THE THICKNESS OF HOT-MIX ASPHALT MIXTURES SHOWN ON THE PLANS IS THE NOMINAL THICKNESS. DEVIATIONS FROM THE NOMINAL THICKNESS WILL BE PERMITTED WHEN SUCH DEVIATIONS OCCUR DUE TO IRREGULARITIES IN THE EXISTING SURFACE OR BASE ON WHICH THE HOT-MIX ASPHALT MIXTURE IS PLACED.
- ⑨ THE CONTRACTOR SHALL BE RESPONSIBLE FOR REPAIRS TO ANY UTILITY LINES AND EXISTING IMPROVEMENTS TO REMAIN THAT ARE DAMAGED AS A RESULT OF THE WORK.
- ⑩ UNLESS NOTED OTHERWISE, STATIONS AND OFFSETS REFER TO BASELINE OF PROJECT

**DISTRICT SIX**

EXAMINED March 1<sup>st</sup> 20 16  
*[Signature]*  
 OPERATIONS ENGINEER

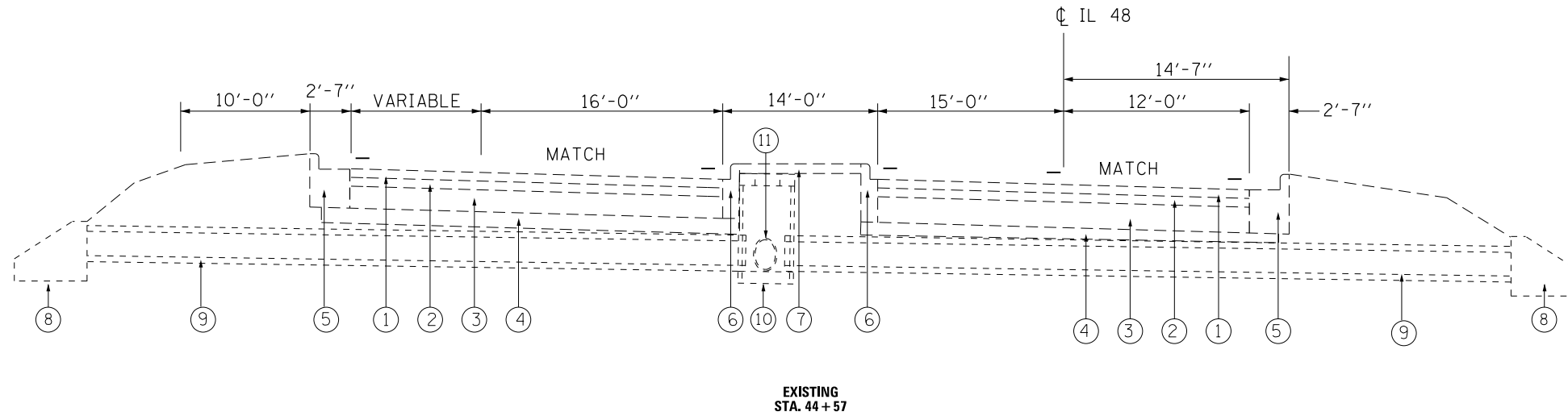
EXAMINED March 1 20 16  
*[Signature]*  
 PROJECT IMPLEMENTATION ENGINEER

EXAMINED March 4 20 16  
*[Signature]*  
 PROGRAM DEVELOPMENT ENGINEER



**EXISTING LEGEND**

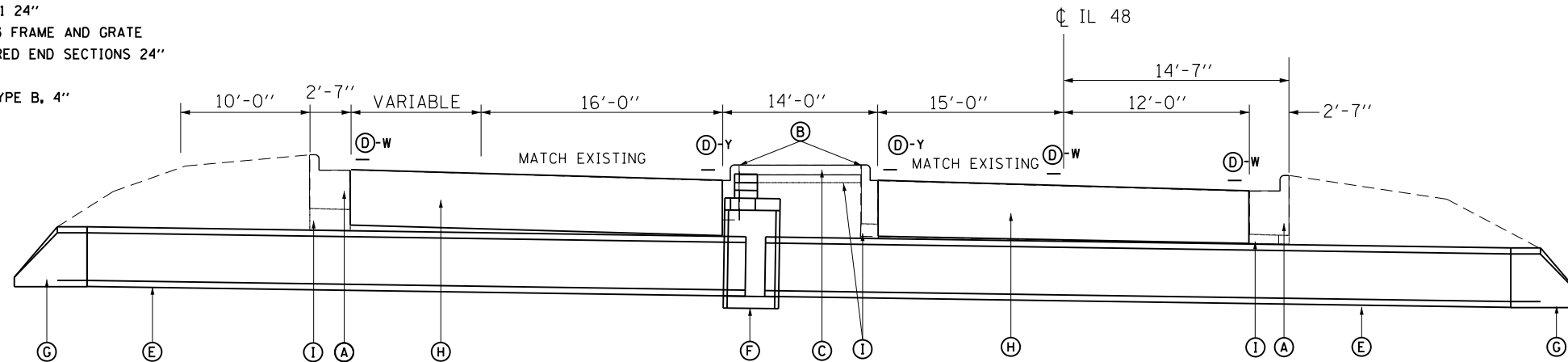
- ① EX BITUMINOUS CONCRETE SURFACE COURSE 1 1/4"
- ② EX BITUMINOUS CONCRETE BINDER COURSE 1 3/4"
- ③ EX P.C.C. BASE COURSE 9"
- ④ EX SUB-BASE GRANULAR MATERIAL
- ⑤ EX COMBINATION CONCRETE CURB AND GUTTER, TYPE B-6.24
- ⑥ EX COMBINATION CONCRETE CURB AND GUTTER, TYPE B-6.06
- ⑦ EX P.C.C. MEDIAN SURFACE 4"
- ⑧ EX CONC. HEADWALL
- ⑨ EX 18" CMP
- ⑩ EX MANHOLE
- ⑪ EX 12" RCP



**EXISTING  
STA. 44 + 57**

**PROPOSED LEGEND**

- Ⓐ PROP COMBINATION CONCRETE CURB AND GUTTER, TYPE B-6.24
- Ⓑ PROP COMBINATION CONCRETE CURB AND GUTTER, TYPE B-6.06
- Ⓒ PROP P.C.C. MEDIAN SURFACE 4"
- Ⓓ PROP PAINT PAVEMENT MARKING-LINE 5" (Y-YELLOW) (W-WHITE)
- Ⓔ PROP PIPE CULVERTS, CLASS A, TYPE 1 24"
- Ⓕ PROP MANHOLE, TYP. A, 5' DIAM, TYP.3 FRAME AND GRATE
- Ⓖ PROP PRECAST REINFORCED CONC. FLARED END SECTIONS 24"
- Ⓗ PROP CLASS D PATCHES, TYP III, 12"
- Ⓘ PROP SUBBASE GRANULAR MATERIAL, TYPE B, 4"



**PROPOSED  
STA. 44 + 57**

FILE NAME =	USER NAME = Verenskif	DESIGNED -	REVISED -
pw:\IL\084EBIDINTEG.illinois.gov\PIWIDOT\Documents\DOT Offices\District 6\Projects\067218\Drawings\CADsheets\067218-sht-typical		DRAWN -	REVISED -
Default	PLOT SCALE = 100.0000' / 1in.	CHECKED -	REVISED -
	PLOT DATE = 3/25/2016	DATE -	REVISED -

**STATE OF ILLINOIS  
DEPARTMENT OF TRANSPORTATION**

**TYPICAL SECTIONS**

SCALE: SHEET 1 OF 1 SHEETS STA. TO STA.

F.A.P. RTE.	SECTION	COUNTY	TOTAL SHEETS	SHEET NO.
714	(135)T,I-5	CHRISTIAN	11	4
			CONTRACT NO. 72118	
ILLINOIS FED. AID PROJECT				

44201794 - CLASS D PATCHES, TYPE III, 12 INCHES				
STATION	TO	STATION	SOYD	REMARKS
44+54.00		44+60.00	24.5	WB LANE TAPER TO INCLUDE INLET
44+54.00		44+60.00	18.8	EB LANE
TOTAL			43.3	

44000500 - COMBINATION CURB AND GUTTER REMOVAL						
STATION	OFFSET	TO	STATION	OFFSET	FOOT	REMARKS
43+90.00	28.7 LT		44+68.0	26 LT	75.7	CENTER MEDIAN NORTH
43+90.00	15 LT		44+68.0	17 LT	77	CENTER MEDIAN SOUTH
44+53.70	54 LT		44+59.7	54 LT	6	NW OF INTERSECTION
44+53.70	13 RT		44+59.7	13 RT	6	SW OF INTERSECTION
TOTAL					164.7	

44003100 - MEDIAN REMOVAL						
STATION	OFFSET	TO	STATION	OFFSET	SOFT	REMARKS
43+90.00	28.7 / 15 LT		44+68.00	26 / 17 LT	879	4" CENTER MEDIAN
TOTAL					879	

50105220 - PIPE CULVERT REMOVAL						
STATION	OFFSET	TO	STATION	OFFSET	FOOT	REMARKS
44+57.00	67 LT		44+57.00	27 RT	94	18" CMP ACROSS IL 48
44+57.00	28.5 LT		44+63.20	29 LT	14	12" RCP PARALLEL IL 48 INLET
TOTAL					108	

50104400 - CONCRETE HEADWALL REMOVAL			
STATION	OFFSET	EACH	REMARKS
44+57.00	67 LT	1	NW OF INTERSECTION
44+57.00	28.5 LT	1	SW OF INTERSECTION
TOTAL		2	

60500040 - REMOVING MANHOLES			
STATION	OFFSET	EACH	REMARKS
44+57.00	26.8 LT	1	CENTER MEDIAN
TOTAL		1	

60500060 - REMOVING INLETS			
STATION	OFFSET	EACH	REMARKS
44+63.00	28 LT	1	NW CENTER MEDIAN
TOTAL		1	

60603500 - COMBINATION CURB AND GUTTER, TYPE B-6.06						
STATION	OFFSET	TO	STATION	OFFSET	FOOT	REMARKS
43+90.00	28.7 LT		44+68.00	26 LT	75.7	CENTER MEDIAN NORTH
43+90.00	15 LT		44+68.00	17 LT	77	CENTER MEDIAN SOUTH
TOTAL					152.7	

60605000 - COMBINATION CURB AND GUTTER, TYPE B-6.24						
STATION	OFFSET	TO	STATION	OFFSET	FOOT	REMARKS
44+53.70	54 LT		44+59.70	54 LT	6	NW OF INTERSECTION
44+53.70	13 RT		44+59.70	13 RT	6	SW OF INTERSECTION
TOTAL					12	

31101200 - SUBBASE GRANULAR MATERIAL, TYPE B 4"						
STATION	OFFSET	TO	STATION	OFFSET	SOYD	REMARKS
43+90.00	28.7 LT		44+68.00	26 LT	9.08	CENTER MEDIAN WB C&G
43+90.00	15 LT		44+68.00	17 LT	9.24	CENTER MEDIAN EB C&G
44+53.70	54 LT		44+59.70	54 LT	1.72	NW OF INTERSECTION C&G
44+53.70	13 RT		44+59.70	13 RT	1.72	SW OF INTERSECTION C&G
43+90.00	28.7/15 LT		44+68.00	26/17 LT	97.7	CENTER MEDIAN
TOTAL					119.5	

60618300 - CONCRETE MEDIAN SURFACE, 4 INCH						
STATION	OFFSET	TO	STATION	OFFSET	SOFT	REMARKS
43+90.00	28.7 / 15 LT		44+68.00	26 / 17 LT	879	4" CENTER MEDIAN
TOTAL					879	

542A0229 - PIPE CULVERT, CLASS A, TYPE I, 24"						
STATION	OFFSET	TO	STATION	OFFSET	FOOT	REMARKS
44+57.00	67 LT		44+57.00	27 RT	94	24" RCP ACROSS IL 48
TOTAL					94	

54213669 - PRECAST REINFORCED CONCRETE FLARED END SECTIONS - 24"			
STATION	OFFSET	EACH	REMARKS
44+57.00	67 LT	1	NORTHEND OF 24" RCP ACROSS IL 48
44+57.00	27 RT	1	SOUTHEND OF 24" RCP ACROSS IL 48
TOTAL		2	

60221200- MANHOLE, TYPE A, 5' DIA, TYPE 3 FRAME AND GRATE			
STATION	OFFSET	EACH	REMARKS
44+57.00	27 LT	1	PLACED IN SAME PLACE AS REMOVED MANHOLE
TOTAL		1	

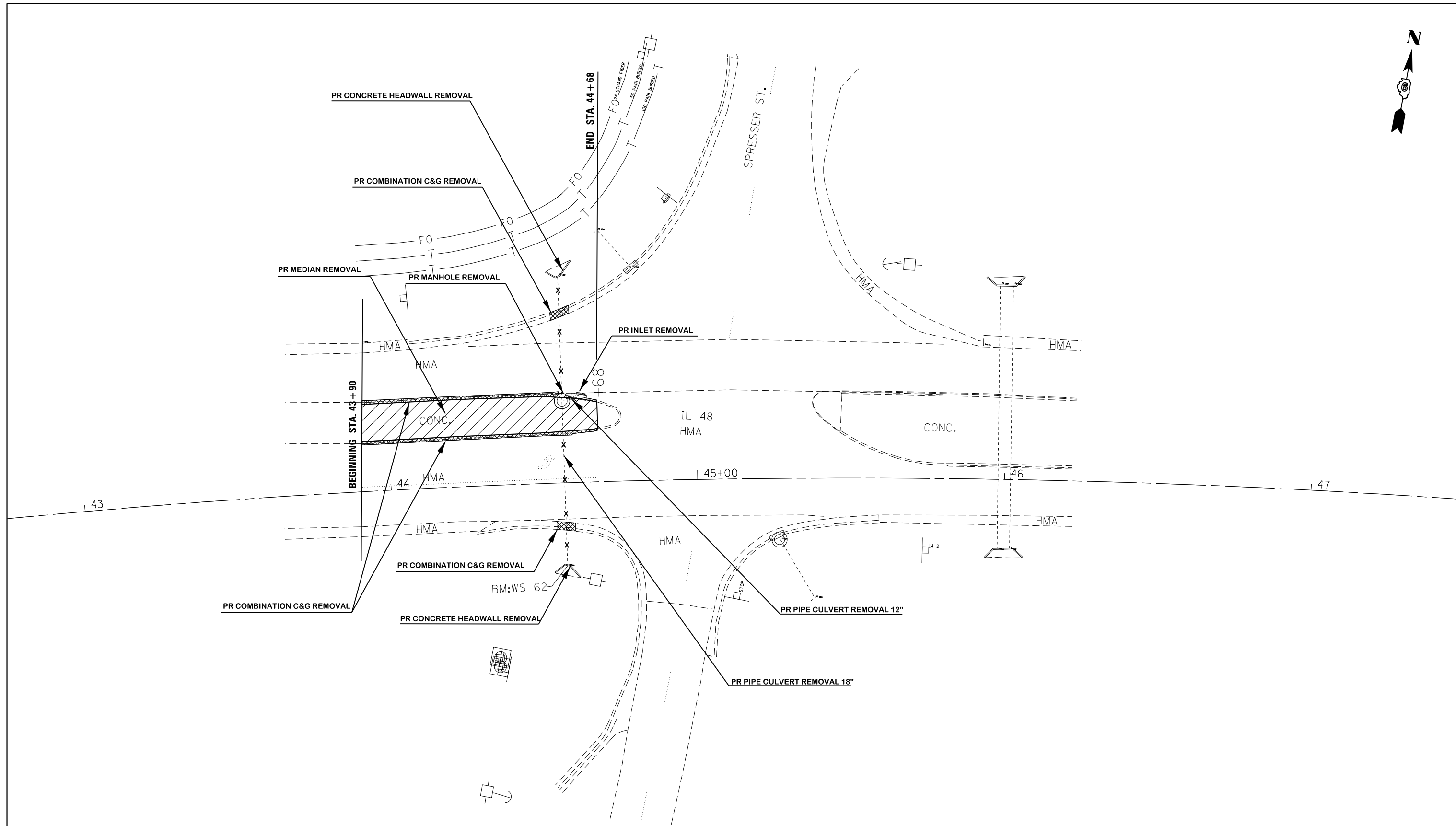
28000500 - INLET AND PIPE PROTECTION			
STATION	OFFSET	EACH	REMARKS
44+57.00	72.5 LT	1	NORTHEND OF PIPE
TOTAL		1	

20800150 - TRENCH BACKFILL						
STATION	OFFSET	TO	STATION	OFFSET	CUYD	REMARKS
44+57.00	67 LT		44+57.00	27 RT	16.5	24" RCP ACROSS IL 48
TOTAL					16.5	

78001120 - PAINT PAVEMENT MARKING - LINE 5"						
STATION	OFFSET	TO	STATION	OFFSET	FOOT	REMARKS
43+90.00	15/30 LT		44+76.00	21 LT	174	YELLOW EDGE LINE MEDIAN
44+54	1.4 LT		44+60.00	1.4 LT	10	WHITE TURN LANE
44+57	53.5 LT		-	-	10	WHITE EDGE LINE
44+57.00	13 RT		-	-	10	WHITE EDGE LINE
TOTAL					204	

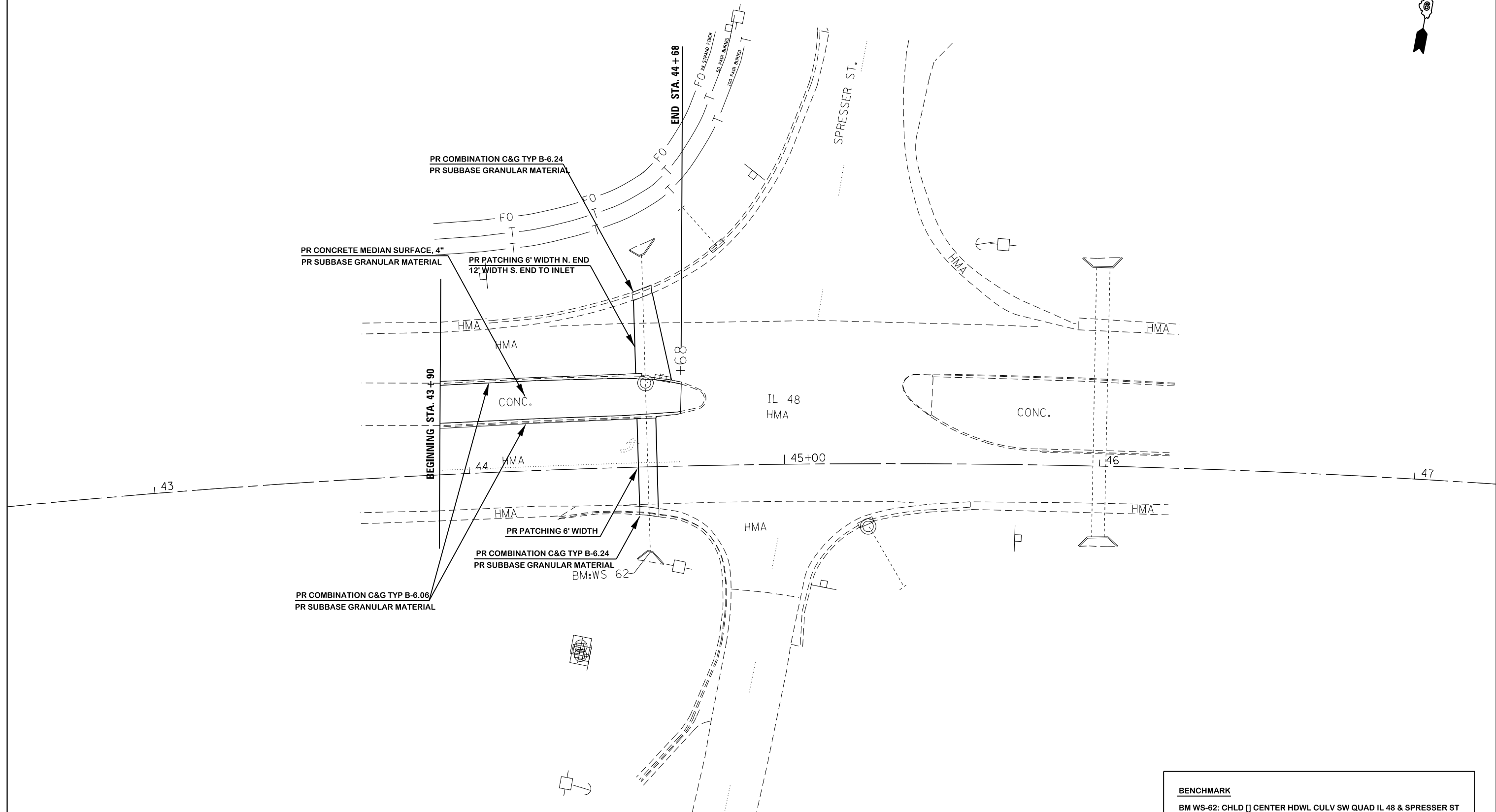
78001100 - PAINT PAVEMENT MARKING - LETTERS & SYMBOLS			
STATION	OFFSET	SQFT	REMARKS
44+50	7	15.6	LEFT TURN ARROW
TOTAL		15.6	

78200300 - PRISMATIC CURB REFLECTOR						
STATION	OFFSET	TO	STATION	OFFSET	EACH	REMARKS
43+90.00	15/30 LT		44+76.00	21 LT	11	REFLECTORS @ 20' CENTERS
TOTAL					11	



**BENCHMARK**  
 BM WS-62: CHLD [ ] CENTER HDWL CULV SW QUAD IL 48 & SPRESSER ST  
 (OLD HWY 48) @ APPROX STA 44+50 ELEV. 611.674

FILE NAME =	USER NAME = Verenskif	DESIGNED -	REVISED -	<b>STATE OF ILLINOIS DEPARTMENT OF TRANSPORTATION</b>	<b>REMOVAL PLAN</b>			F.A.P. RTE.	SECTION	COUNTY	TOTAL SHEETS	SHEET NO.			
pw\ill084EBIDINTEG.illinois.gov\PIWIDOT\Documents\IDOT Offices\District 6\Projects\067218\Drawings\CAD\Sheets\067218-sht-plan.dgn			REVISED -		SCALE:	SHEET 1	OF 1	SHEETS	STA.	TO STA.	714	(135)T, I-5	CHRISTIAN	11	7
Default	PLOT SCALE = 30.0000' / in.	CHECKED -	REVISED -								CONTRACT NO. 72118				
	PLOT DATE = 3/25/2016	DATE -	REVISED -								ILLINOIS FED. AID PROJECT				



PR COMBINATION C&G TYP B-6.24  
PR SUBBASE GRANULAR MATERIAL

PR CONCRETE MEDIAN SURFACE, 4"  
PR SUBBASE GRANULAR MATERIAL

PR PATCHING 6' WIDTH N. END  
12' WIDTH S. END TO INLET

BEGINNING STA. 43+90

END STA. 44+68

IL 48  
HMA

CONC.

PR PATCHING 6' WIDTH

PR COMBINATION C&G TYP B-6.24  
PR SUBBASE GRANULAR MATERIAL

BM:WS 62

PR COMBINATION C&G TYP B-6.06  
PR SUBBASE GRANULAR MATERIAL

**BENCHMARK**  
BM WS-62: CHLD □ CENTER HDWL CULV SW QUAD IL 48 & SPRESSER ST  
(OLD HWY 48) @ APPROX STA 44+50 ELEV. 611.674

FILE NAME =	USER NAME = Verenskif	DESIGNED -	REVISED -
pw\ill084EBIDINTEG.illinois.gov\PIWIDOT\Documents\IDOT Offices\District 6\Projects\0672118\Drawings\CADsheets\0672118-sht-plan.dgn		REVISED -	REVISED -
Default	PLOT SCALE = 30.0000' / in.	CHECKED -	REVISED -
	PLOT DATE = 3/25/2016	DATE -	REVISED -

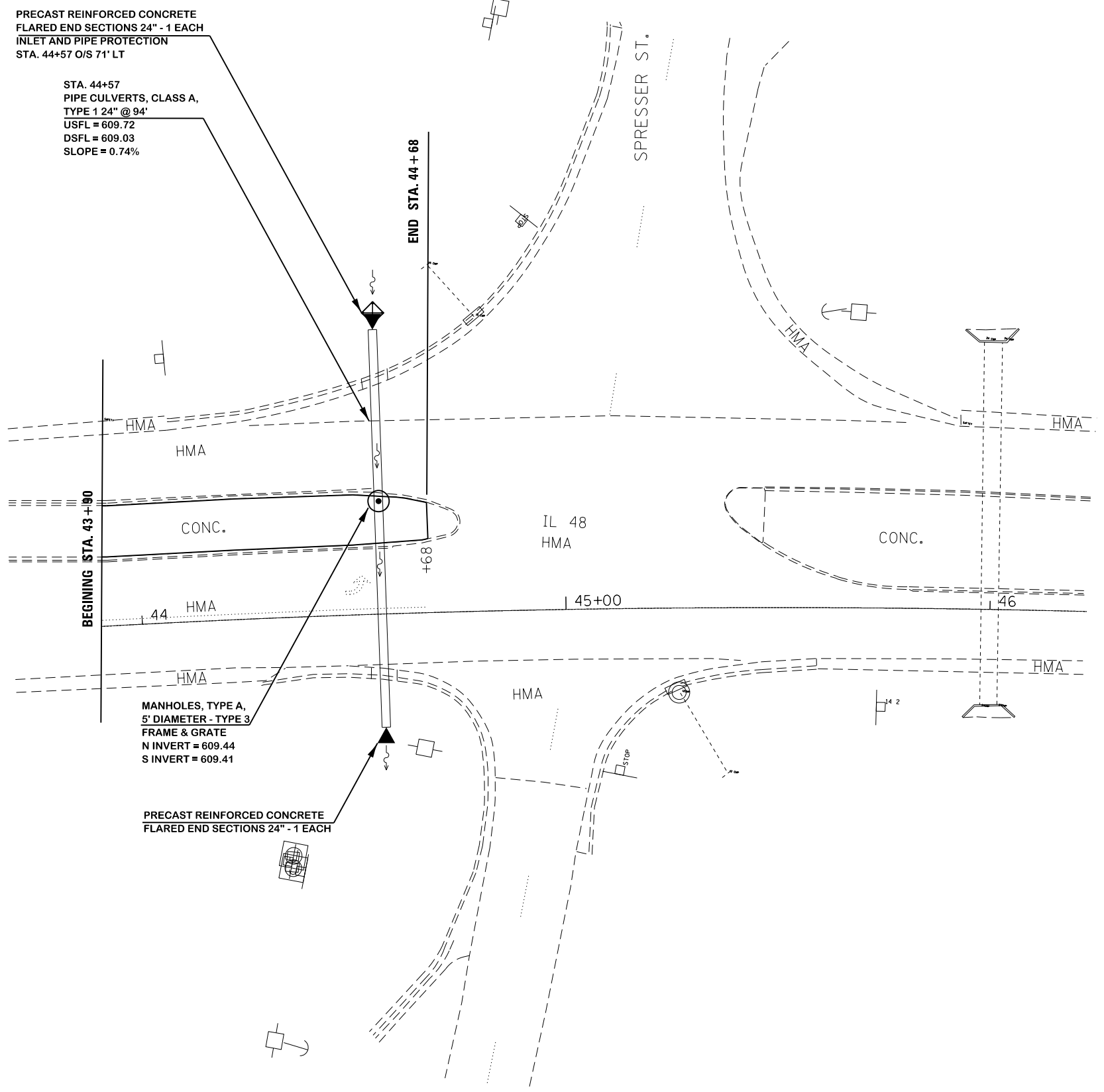
**STATE OF ILLINOIS  
DEPARTMENT OF TRANSPORTATION**

**PROPOSED PLAN**

SCALE: SHEET 1 OF 1 SHEETS STA. TO STA.

F.A.P. RTE.	SECTION	COUNTY	TOTAL SHEETS	SHEET NO.
714	(135)T, I-5	CHRISTIAN	11	8
CONTRACT NO. 72118			ILLINOIS FED. AID PROJECT	





PRECAST REINFORCED CONCRETE  
FLARED END SECTIONS 24" - 1 EACH  
INLET AND PIPE PROTECTION  
STA. 44+57 O/S 71' LT

STA. 44+57  
PIPE CULVERTS, CLASS A,  
TYPE 1 24" @ 94'  
USFL = 609.72  
DSFL = 609.03  
SLOPE = 0.74%

END STA. 44 + 68

BEGINNING STA. 43 + 90

MANHOLES, TYPE A,  
5' DIAMETER - TYPE 3  
FRAME & GRATE  
N INVERT = 609.44  
S INVERT = 609.41

PRECAST REINFORCED CONCRETE  
FLARED END SECTIONS 24" - 1 EACH

SPRESSER ST.

IL 48  
HMA

CONC.

HMA

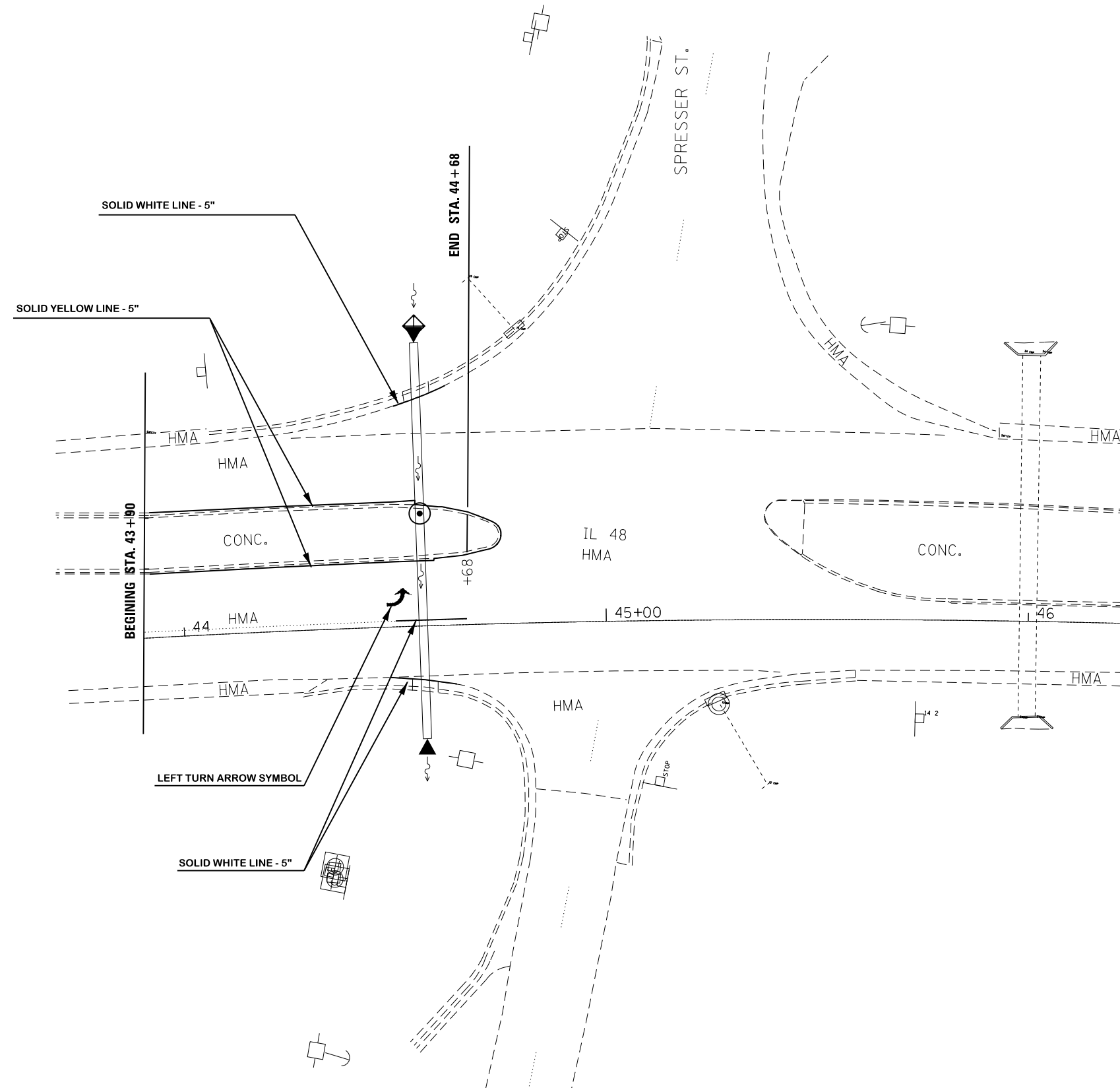
45+00

44

46

STOP

FILE NAME = p:\IL\084EBID\INTEG\Illinois.gov\PIWIDOT\Documents\IDOT Offices\District 6\Projects\067218\DRAWING\GAD\Sheets\067218-sht-Drainage	USER NAME = Verenskif	DESIGNED -	REVISED -	<b>STATE OF ILLINOIS DEPARTMENT OF TRANSPORTATION</b>	<b>PROPOSED DRAINAGE</b>			F.A.P. RTE.	SECTION	COUNTY	TOTAL SHEETS	SHEET NO.
	PLOT SCALE = 30.0000' / in.	CHECKED -	REVISED -					714	(135)T,I-5	CHRISTIAN	11	9
Default	PLOT DATE = 3/25/2016	DATE -	REVISED -	SCALE: SHEET 1 OF 1 SHEETS STA. TO STA.			ILLINOIS FED. AID PROJECT CONTRACT NO. 72118					



FILE NAME =	USER NAME = Verenskif	DESIGNED -	REVISED -
pw:\IL084EBIDINTEG.illinois.gov\PIWIDOT\Documents\IDOT Offices\District 6\Projects\0672118\Drawings\GAD\Drawings\0672118-sht-pmk.dgn		REVISOR -	REVISED -
Default	PLOT SCALE = 30.0000' / in.	CHECKED -	REVISED -
	PLOT DATE = 3/25/2016	DATE -	REVISED -

**STATE OF ILLINOIS  
DEPARTMENT OF TRANSPORTATION**

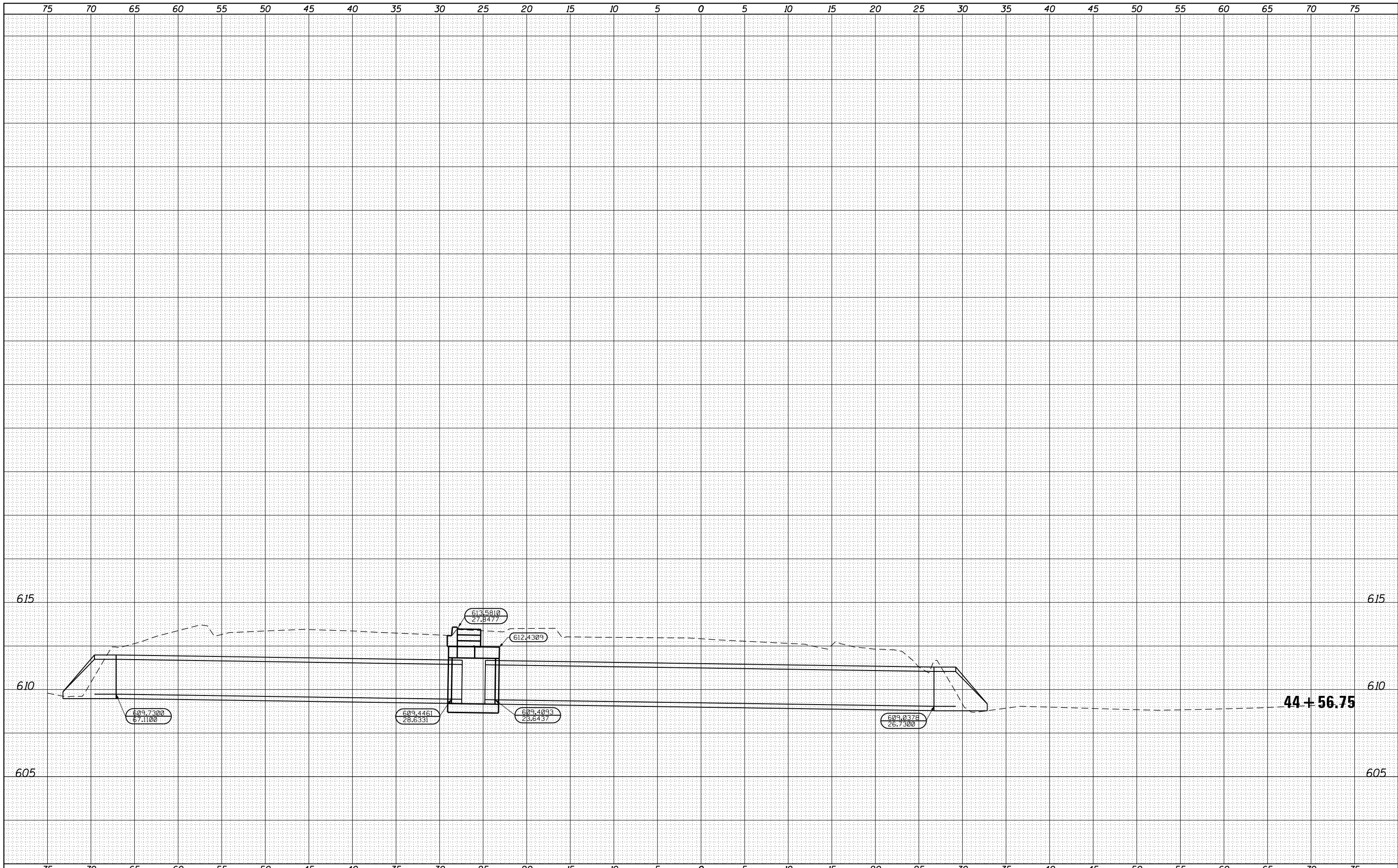
**PAVEMENT MARKING PLAN**

SCALE: SHEET 1 OF 1 SHEETS STA. TO STA.

F.A.P. RTE.	SECTION	COUNTY	TOTAL SHEETS	SHEET NO.
714	(135)T,I-5	CHRISTIAN	11	10
CONTRACT NO. 72118			ILLINOIS FED. AID PROJECT	

DATE	
BY	
SURVEYED	
PLOTTED	
TEMPLATE	
AREAS	
CHECKED	
FINAL SURVEY	
NOTE BOOK	
NO.	

DATE	
BY	
SURVEYED	
PLOTTED	
TEMPLATE	
AREAS	
CHECKED	
ORIGINAL SURVEY	
NOTE BOOK	
NO.	



FILE NAME =  
 p:\11084EBIDINTEG\Illinois.gov\IDOT\Documents\IDOT Offices\District 6\Projects\0672118\CADD\DRAWINGS\0672118-sht-XSC.dgn  
 Default

USER NAME = Verenskif  
 DESIGNED -  
 PLOT SCALE = 10.0000' / in.  
 PLOT DATE = 3/25/2016

DESIGNED -  
 CHECKED -  
 DATE -

REVISÉ -  
 REVISÉ -  
 REVISÉ -  
 REVISÉ -

**STATE OF ILLINOIS  
 DEPARTMENT OF TRANSPORTATION**

**CROSS SECTIONS**

SCALE: SHEET 1 OF 1 SHEETS STA. 44+56.75 TO STA. 44+56.75

F.A.P. RTE.	SECTION	COUNTY	TOTAL SHEETS	SHEET NO.
714	(135)T, I-5	CHRISTIAN	11	11
CONTRACT NO. 72118			ILLINOIS FED. AID PROJECT	