

06-10-2016 LETTING ITEM 110

FOR INDEX OF SHEETS, SEE SHEET NO. 2

ADT = 9,900 (2016)

SU% = 5.05%

MU% = 26.26%

CRS = 6.3 (2016)

PV = 68.69%

STANDARDS

000001-06

001006

701400-08

701401-09

701901-05

780001-05

STATE OF ILLINOIS
DEPARTMENT OF TRANSPORTATION
DIVISION OF HIGHWAYS

**PROPOSED
HIGHWAY PLANS**

FAI ROUTE 72 (I-72)
SECTION (69-8,9) I-2

MORGAN COUNTY

C-96-032-16

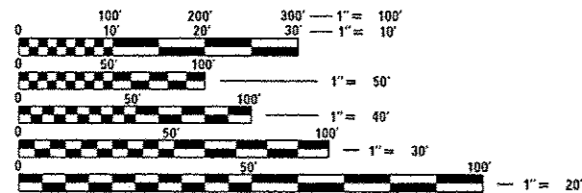
FAI RTE.	SECTION	COUNTY	TOTAL SHEETS	SHEET NO.
72	(69-8,9) I-2	MORGAN	17	1
		ILLINOIS	CONTRACT NO. 72119	

D-96-032-16



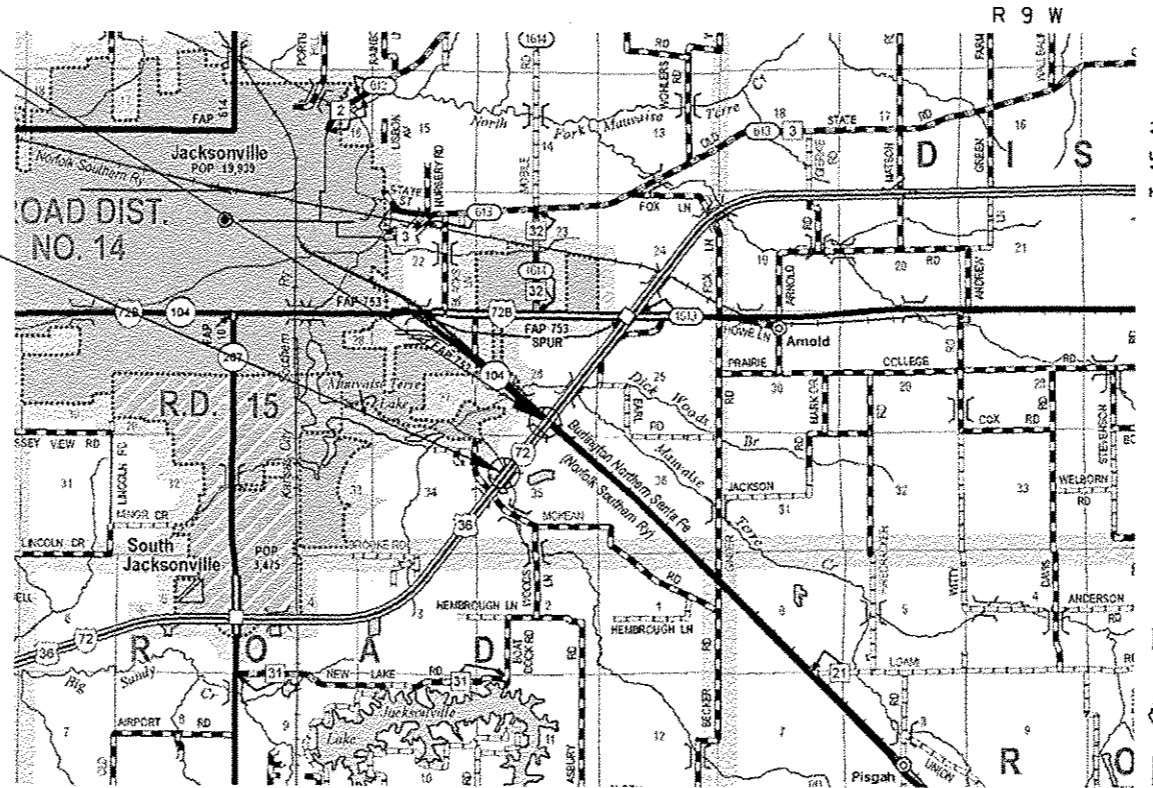
SN 069-0041
BEGIN SECTION STA. 1197+03.99
END SECTION STA. 1203+48.55
OMISSION: STA. 1198+92.01-STA. 1201+14.97

SN 069-0039
BEGIN SECTION STA. 1169+33.31
END SECTION STA. 1174+75.00
OMISSION: STA. 1170+69.20-STA. 1172+32.67



FULL SIZE PLANS HAVE BEEN PREPARED USING STANDARD ENGINEERING SCALES. REDUCED SIZED PLANS WILL NOT CONFORM TO STANDARD SCALES. IN MAKING MEASUREMENTS ON REDUCED PLANS, THE ABOVE SCALES MAY BE USED.

J.U.L.I.E.
JOINT UTILITY LOCATION INFORMATION FOR EXCAVATION
1-800-892-0123
OR 811



GROSS LENGTH = 1186.25 FT. = 0.224 MILE
NET LENGTH = 799.82 FT. = 0.151 MILE

PROJECT ENGINEER: JAY WAVERING (217) 785-9046
PROJECT MANAGER: VICTOR YOUNG (217) 524-0472

CONTRACT NO. 72119

STATE OF ILLINOIS
DEPARTMENT OF TRANSPORTATION
DIVISION OF HIGHWAYS

SUBMITTED *March 24 2016*

[Signature]
DEPUTY DIRECTOR OF HIGHWAYS, REGION ENGINEER

May 6 2016
Maureen M. Addis, PE
ENGINEER OF DESIGN AND ENVIRONMENT

May 6 2016
Omer Osman, PE
DIRECTOR OF HIGHWAYS, CHIEF ENGINEER

**PRINTED BY THE AUTHORITY
OF THE STATE OF ILLINOIS**

GENERAL NOTES

1. THE STANDARDS INCLUDED IN THE BACK OF THESE PLANS SHALL APPLY TO THIS PROJECT.
2. THESE PLANS HAVE BEEN PREPARED USING STANDARD SYMBOLS AS INDICATED IN THESE PLANS, AND THEY SHALL TAKE PRECEDENCE OVER THOSE SHOWN ON STANDARD 000001-06 IF THERE IS A CONFLICT.
3. EXISTING RAISED REFLECTIVE PAVEMENT MARKERS SHALL BE REMOVED PRIOR TO RESURFACING.
4. THE CONTRACTOR SHALL VERIFY ALL DIMENSIONS AND CONDITIONS IN THE FIELD PRIOR TO CONSTRUCTION AND ORDERING OF MATERIALS.
5. THE CONTRACTOR SHALL PROTECT UTILITY PROPERTY FROM CONSTRUCTION OPERATIONS AS OUTLINED IN ARTICLE 107.31 OF THE STANDARD SPECIFICATIONS. AGENCIES KNOWN TO HAVE FACILITIES WITHIN THE PROJECT AREA ARE AS FOLLOWS:

J.U.L.I.E. 1-800-892-0123

ILLINOIS STATE LAW REQUIRES A 48-HOUR NOTICE BE GIVEN TO ALL UTILITIES BEFORE DIGGING. FIELD MARKING OF FACILITIES MAY BE OBTAINED BY CONTACTING J.U.L.I.E. OR FOR NON-MEMBERS, BY CONTACTING THE UTILITY COMPANY DIRECTLY.

IT IS UNDERSTOOD AND AGREED THAT THE CONTRACTOR HAS TAKEN THE FOREGOING INTO CONSIDERATION IN SUBMITTING HIS BID, AND NO ADDITIONAL COMPENSATION WILL BE ALLOWED FOR ANY DELAYS OR INCONVENIENCES CAUSED BY THE SAME.

THE INFORMATION AND DATA SHOWN OR INDICATED ON THESE IMPROVEMENT PLANS WITH RESPECT TO EXISTING UNDERGROUND FACILITIES AND UTILITIES AT OR CONTIGUOUS TO THE SITE IS BASED ON INFORMATION AND DATA FURNISHED BY THE OWNERS OF SUCH UNDERGROUND FACILITIES AND UTILITIES OR BY OTHERS. FIELD MARKINGS OF FACILITIES IN CRITICAL AREAS MAY BE OBTAINED BY PROVIDING A MINIMUM OF 96 HOURS ADVANCE NOTICE TO THE RESIDENT ENGINEER SO THAT UTILITIES CAN BE GIVEN NOTICE. NO GUARANTEE IS IMPLIED AS TO THE ACCURACY OR COMPLETENESS OF ANY SUCH INFORMATION OR DATA; AND CONTRACTOR SHALL HAVE FULL RESPONSIBILITY FOR (i) REVIEWING AND CHECKING ALL SUCH INFORMATION AND DATA, (ii) VERIFYING IF ANY CONFLICTS EXIST WITH THE PROPOSED WORK AND UNDERGROUND FACILITIES AND UTILITIES SHOWN OR INDICATED ON THE IMPROVEMENT PLANS; (iii) COORDINATION OF THE WORK WITH THE OWNERS OF SUCH UNDERGROUND FACILITIES AND UTILITIES DURING CONSTRUCTION, AND (iv) THE SAFETY AND PROTECTION OF ALL SUCH UNDERGROUND FACILITIES AND UTILITIES AND REPAIR ANY DAMAGE THERETO RESULTING FROM THE WORK AT HIS EXPENSE.

6. FULL DEPTH SAW CUTTING ON ALL EDGES FOR REMOVAL ITEMS SHALL BE INCLUDED IN THE COST OF THE REMOVAL ITEM AS INDICATED AND IN ACCORDANCE WITH SECTION 440 OF THE STANDARD SPECIFICATIONS.
7. FOR STABILIZATION, ALL TYPE III BARRICADES SHALL REQUIRE A MINIMUM OF FOUR SANDBAGS PER BARRICADE.
8. ALL AREAS DISTURBED BEYOND THE CONSTRUCTION LIMITS FOR ANY REASON SHALL BE SEEDED WITH CLASS 2 SEEDING, AS DIRECTED BY THE ENGINEER. NUTRIENTS SHALL CONFORM TO ARTICLE 250.04. FINAL SEEDING SHALL BE PERFORMED AS SOON AS POSSIBLE. THESE AREAS WILL NOT BE MEASURED FOR PAYMENT.
9. WHERE SECTION OR SUBSECTION MONUMENTS ARE ENCOUNTERED, THE ENGINEER SHALL BE NOTIFIED BEFORE SUCH MONUMENTS ARE REMOVED. THE CONTRACTOR SHALL PROTECT AND CAREFULLY PRESERVE ALL MONUMENTS UNTIL AN AUTHORIZED SURVEYOR OR AGENT HAS WITNESSED OR OTHERWISE REFERENCED THEIR LOCATION. THE CONTRACTOR SHALL BE RESPONSIBLE FOR HAVING AN AUTHORIZED SURVEYOR REESTABLISH ANY SECTION OR SUBSECTION MONUMENTS DESTROYED BY HIS/HER OPERATIONS.
10. THE FOLLOWING RATES OF APPLICATION HAVE BEEN USED TO CALCULATE THE PLAN QUANTITIES:

GRANULAR MATERIALS	2.05 TONS / CU YD
BITUMINOUS MATERIALS (PRIME COAT)	0.05 LBS / SQ FT (MILLED/AGED)
	0.025 LBS / SQ FT (FOG COAT BTW LIFTS)
	0.25 LBS / SQ FT (AGG BASE)
HMA RESURFACING	112 LBS / SQ YD / IN
SHORT TERM PAVEMENT MARKING	4 FT / 40 FT OF APPLICATION
RIP RAP	1.50 TONS / CU YD
11. THE CONTRACTOR SHALL NOTIFY THE DISTRICT 6 BUREAU OF OPERATION AT (217) 785-5312 THREE WEEKS PRIOR TO IMPLEMENTING ANY TRAFFIC CONTROL.

12. THE PROPOSED PAYMENT MARKING SHALL BE DONE BY THE DISTRICT 6 OPERATIONS. ON COMPLETION OF THE PROJECT, THE CONTRACTOR SHALL CONTACT DISTRICT 6 OPERATIONS AT (217) 785-5312 TO MAKE ARRANGMENTS FOR THIS WORK.
13. EXISTING REINFORCEMENT BARS EXTENDING INTO THE REMOVAL AREA SHALL BE CLEANED, STRAIGHTENED, AND INCORPORATED INTO THE NEW CONSTRUCTION. ANY REINFORCEMENT BARS THAT ARE DAMAGED DURING CONCRETE REMOVAL SHALL BE REPLACED WITH AN APPROVED BAR SPLICER OR ANCHORAGE SYSTEM. COST INCLUDED WITH CONCRETE REMOVAL.

INDEX OF SHEETS

1. COVER SHEET
2. GENERAL NOTES
- 3-4. SUMMARY OF QUANTITIES
5. SCHEDULE OF QUANTITIES
6. TYPICAL SECTION
- 7-8. PLAN & PROFILE
- 9-13. TRAFFIC CONTROL PLAN LAYOUT
- 14-17. DETAILS

COMMITMENTS

1. THE RESIDENT ENGINEER SHALL CONTACT STUDIES & PLANS CONCERNING ANY MAJOR PLAN CHANGES.

MIXTURE TABLES

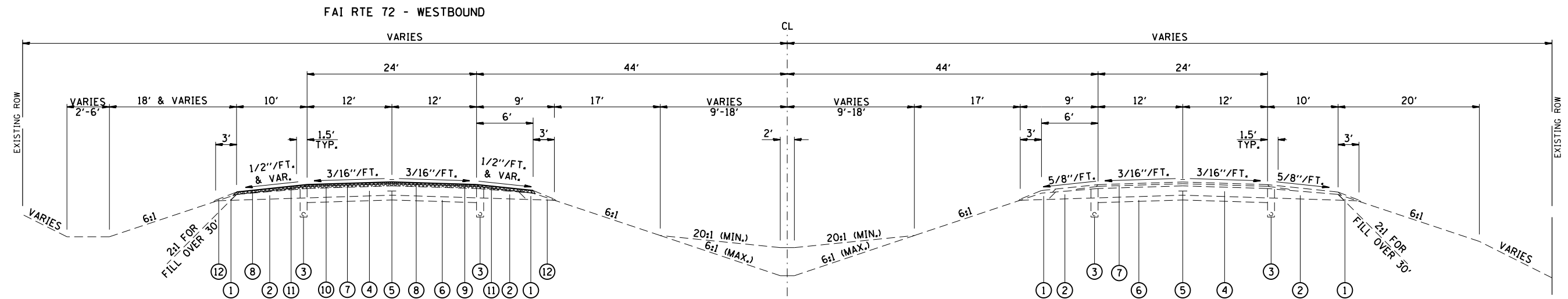
Location(s):	I-72	I-72 Shoulders	I-72 Leveling Binder
MIXTURE USE(S):	HMA SURFACE COURSE	HMA SHOULDER	LEVEL BINDER
PG:	PG 64-22	PG 64-22	PG 64-22
DESIGN AIR VOIDS:	4.0% @ N90	4.0% @ N50	4.0% @ N90
Mixture Composition:	IL-9.5	IL-9.5	IL-9.5
FRICTION AGGREGATE:	MIX "D"	MIX "C"	N/A
Quality Management:	QC/QA	QC/QA	QC/QA
Mixture Sublot Size:	N/A	N/A	N/A

DISTRICT SIX			
EXAMINED	<i>March 16th</i>	20	<i>16</i>
<i>John W. Wynn</i>			
OPERATIONS ENGINEER			
EXAMINED	<i>March 10</i>	20	<i>16</i>
<i>Ron Chamberlain</i>			
PROJECT IMPLEMENTATION ENGINEER			
EXAMINED	<i>March 18</i>	20	<i>16</i>
<i>John P. Meyer</i>			
PROGRAM DEVELOPMENT ENGINEER			

CODE NO.	ITEM	UNIT	TOTAL QUANTITY	CONSTRUCTION CODE	
				6-00988-0000	6-00988-0000
				100% STATE ROADWAY	100% STATE ROADWAY
				0004	0004
				S. N. 069-0039	S. N. 069-0041
40600275	BITUMINOUS MATERIALS (PRIME COAT)	POUND	2264	999	1265
40600645	LEVELING BINDER (MACHINE METHOD), N90	TON	138	36.2	101.8
40600982	HOT-MIX ASPHALT SURFACE REMOVAL - BUTT JOINT	SQ YD	1094	560	534
40600990	TEMPORARY RAMP	SQ YD	286	143	143
40603345	HOT-MIX ASPHALT SURFACE COURSE, MIX "D", N90	TON	180	85	95
48102100	AGGREGATE WEDGE SHOULDER, TYPE B	TON	61	29	32
48203100	HOT-MIX ASPHALT SHOULDERS	TON	212	81	131
50102400	CONCRETE REMOVAL	CU YD	0.5	0.5	
60260100	INLETS TO BE ADJUSTED	EACH	6	2	4
67100100	MOBILIZATION	LSUM	1	0.5	0.5
70100800	TRAFFIC CONTROL AND PROTECTION, STANDARD 701401	LSUM	1	0.5	0.5
70300100	SHORT TERM PAVEMENT MARKING	FOOT	137	65	72
70300150	SHORT TERM PAVEMENT MARKING REMOVAL	SO FT	46	22	24
78300200	RAISED REFLECTIVE PAVEMENT MARKER REMOVAL	EACH	11	5	6

FILE NAME: pm\1188468\INTEG\Illinois.gov\PI\DOT\Documents\DOT Offices\District 6\Projects\0672119\0672119-000.dgn	USER NAME: Veranski	DESIGNED: -	REVISED: -	STATE OF ILLINOIS DEPARTMENT OF TRANSPORTATION	SUMMARY OF QUANTITIES				F.A.I. R.T.E.	SECTION	COUNTY	TOTAL SHEETS	SHEET NO.
		CHECKED: -	REVISED: -		SCALE: 1" = 100.0000'	SHEET	OF	SHEETS	STA.	TO STA.	MORGAN	17	3
		DATE: -	REVISED: -										
											CONTRACT NO. 72119		
											ILLINOIS FED. AID PROJECT		

LOCATION			LENGTH	WIDTH	HMA SURFACE REMOVAL VAR DEPTH	BIT MATERIALS PRIME COAT	LEVELING BINDER MACHINE METHOD	HMA SURFACE COURSE, MIX D, N90 1 1/2"	HOT-MIX ASPHALT SHOULDERS	AGGREGATE WEDGE SHOULDER, TY B
STATION	TO	STATION	(FOOT)	(FOOT)	(SQ YD)	(POUND)	(TON)	(TON)	(TON)	(TON)
SN 069-0039										
1169+33.31	TO	1170+69.20	135.89	40	603.96	271.78		30.44	20.29	10.25
1172+32.67	TO	1174+75.00	242.33	40	1077.02	726.99	36.19	54.28	60.29	18.4
SN 069-0041										
1197+03.99	TO	1198+92.01	188.02	40	835.64	564.06	36.22	42.12	52.28	14.28
1201+14.97	TO	1203+48.55	233.58	40	1038.13	700.74	65.58	52.32	78.59	17.73
TOTAL					3554.76	2263.57	137.98	179.16	211.45	60.66
USE					3555.0	2264.0	138.0	180.0	212.0	61.0



I-72 TYPICAL SECTION

(WB) STA 1169+33.31 TO STA 1170+69.20
 * STA 1172+32.67 TO STA 1174+75.00
 * STA 1197+03.99 TO STA 1198+92.01
 ** STA 1201+14.97 TO STA 1203+48.55

LEGEND

- ① EXISTING AGGREGATE SHOULDER
- ② EXISTING STABILIZED SHOULDER, 8"
- ③ EXISTING SUB-SURFACE DRAIN
- ④ EXISTING CONTINUOUSLY REINFORCED PCC PAVEMENT, 8"
- ⑤ EXISTING LONGITUDINAL JOINT
- ⑥ EXISTING STABILIZED SUB-BASE, 4"
- ⑦ EXISTING HMA, 3 1/4"
- ⑧ PROPOSED HMA REMOVAL VARIABLE DEPTH
- ⑨ PROPOSED HMA SURFACE COURSE, MIX D, N90, 1 1/2"
- ⑩ PROPOSED LEVELING BINDER (MACHINE METHOD), IL-9.5, N90 (SEE NOTE)
- ⑪ PROPOSED HMA SHOULDERS
- ⑫ PROPOSED AGG WEDGE SHOULDER, TYPE B

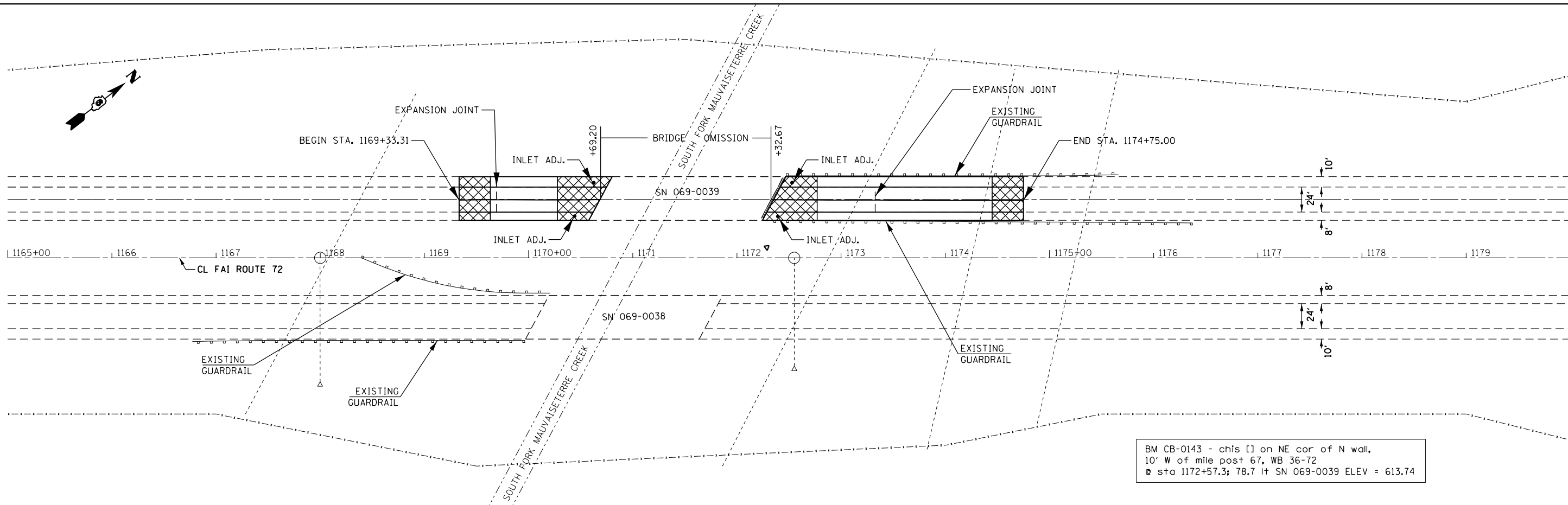
NOTE

- * PROPOSED LEVELING BINDER (2"+ VARIES)
- ** PROPOSED LEVELING BINDER (2 3/4"+ VARIES)

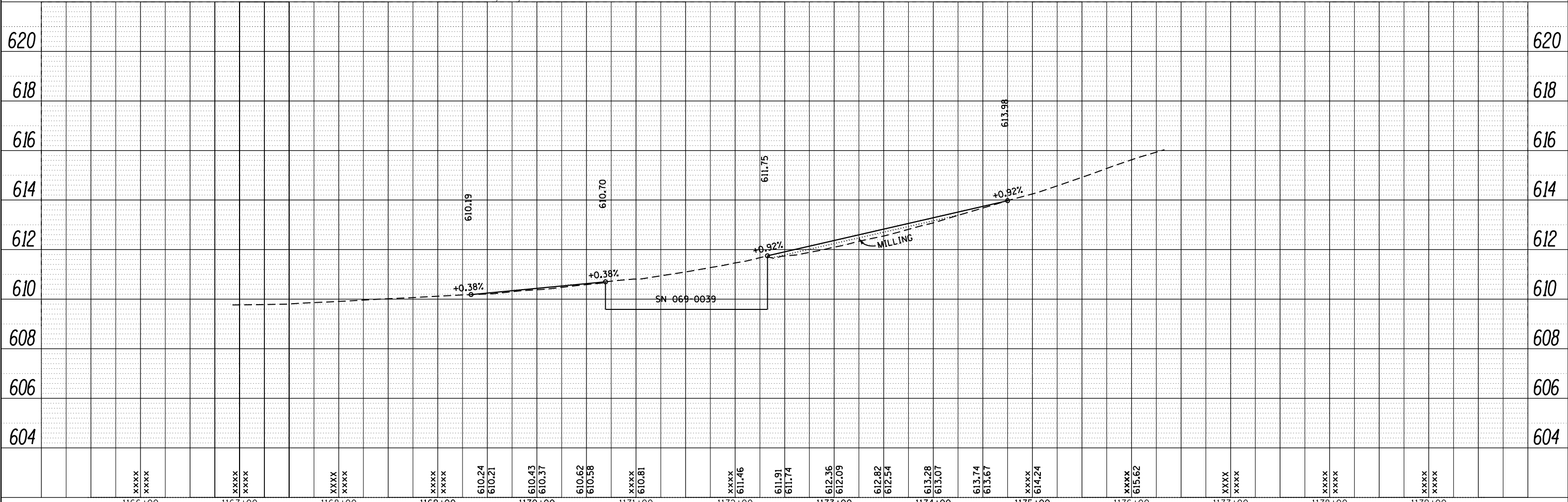
FILE NAME =	USER NAME = Verenskif	DESIGNED -	REVISED -	STATE OF ILLINOIS DEPARTMENT OF TRANSPORTATION	TYPICAL SECTION		F.A.I. RTE.	SECTION	COUNTY	TOTAL SHEETS	SHEET NO.
pw:\IL\084EBIDINTEG.illinois.gov\PIWIDOT\Documents\IDOT Offices\District 6\Projects\06721\DRAWING\GAD\Sheets\0672119-sht-typical.dwg	PLotted SCALE = 40.0000' / in.	CHECKED -	REVISED -				72	(69-8,9) I-2	MORGAN	17	6
Default	PLOT DATE = 3/25/2016	DATE -	REVISED -		SCALE: SHEET OF SHEETS STA. TO STA.		CONTRACT NO. 72119				
							ILLINOIS FED. AID PROJECT				

PLAN	SURVEYED	BY	DATE
	PLOTTED		
	ALIGNED		
	CHECKED		
	DESIGNED		
	FILE NAME		
	NO.		

PROFILE	SURVEYED	BY	DATE
	PLOTTED		
	GRADES		
	CHECKED		
	STRUCTURE		
	NOTATIONS		
	CHKD		
	NO.		



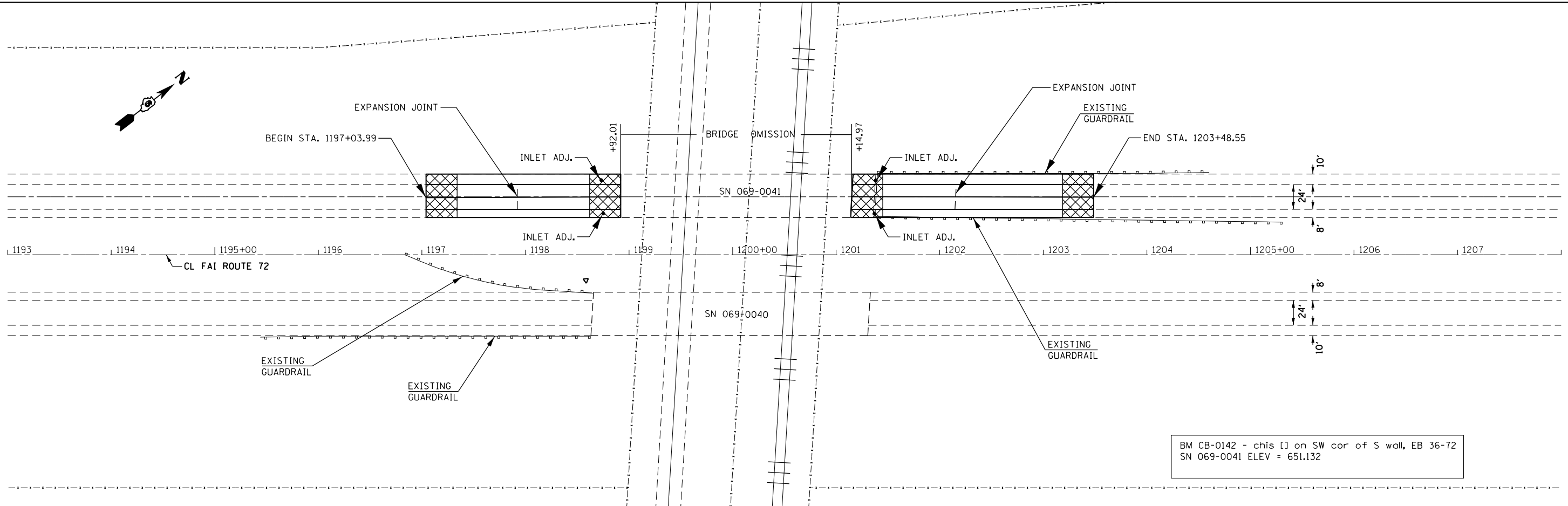
BM CB-0143 - chis [] on NE cor of N wall,
 10' W of mile post 67, WB 36-72
 @ sta 1172+57.3; 78.7 ft SN 069-0039 ELEV = 613.74



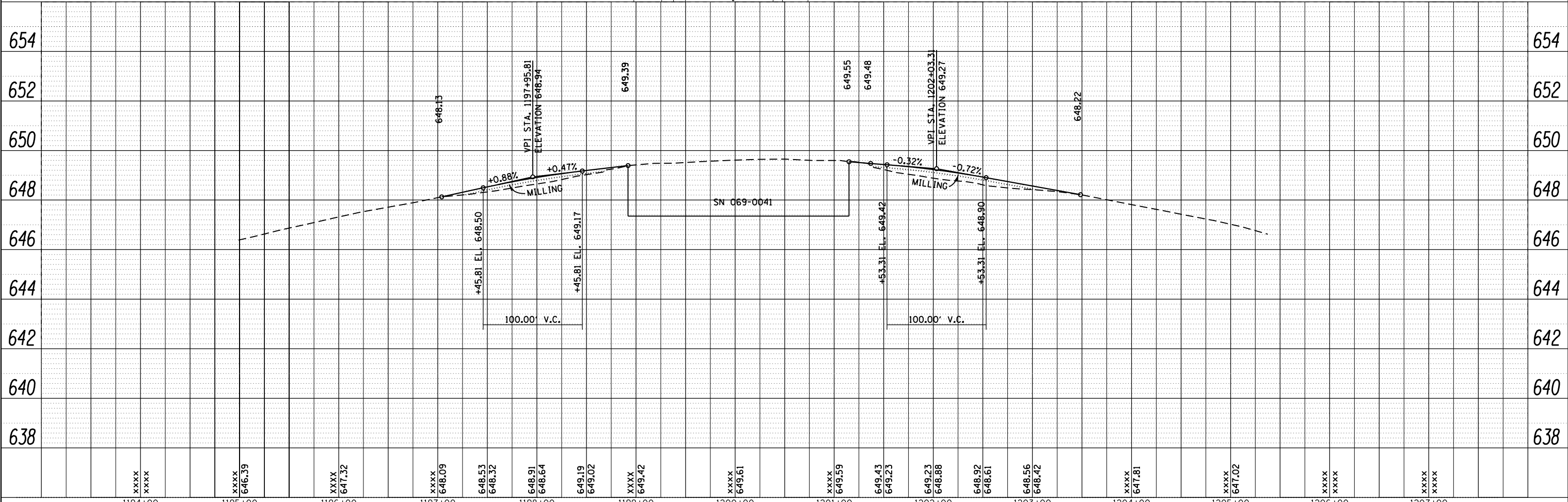
FILE NAME =	USER NAME = Verenskif	DESIGNED -	REVISED -	STATE OF ILLINOIS		PLAN & PROFILE		F.A.I. R.T.	SECTION	COUNTY	TOTAL SHEETS	SHEET NO.
Default	pwt:\IL084EBIDINTEG\Illinois.gov\PIWIDOT\Documents\IDOT Offices\District 6\Projects\0672119\0672119 - sht-Plan.&PROFILE	DRAWN -	REVISED -	DEPARTMENT OF TRANSPORTATION				72	(69-8,9) 1-2	MORGAN	17	7
	PLOT SCALE = 100.0000' / in.	CHECKED -	REVISED -			SCALE:		SHEET OF SHEETS		STA. TO STA.		CONTRACT NO. 72119
	PLOT DATE = 3/25/2016	DATE -	REVISED -									ILLINOIS FED. AID PROJECT

PLAN	SURVEYED	BY	DATE
	PLOTTED		
	GRADES CHECKED		
	STRUCTURE NOTATIONS CHECKED		
	NOTE BOOK NO.		
	CADD FILE NAME		

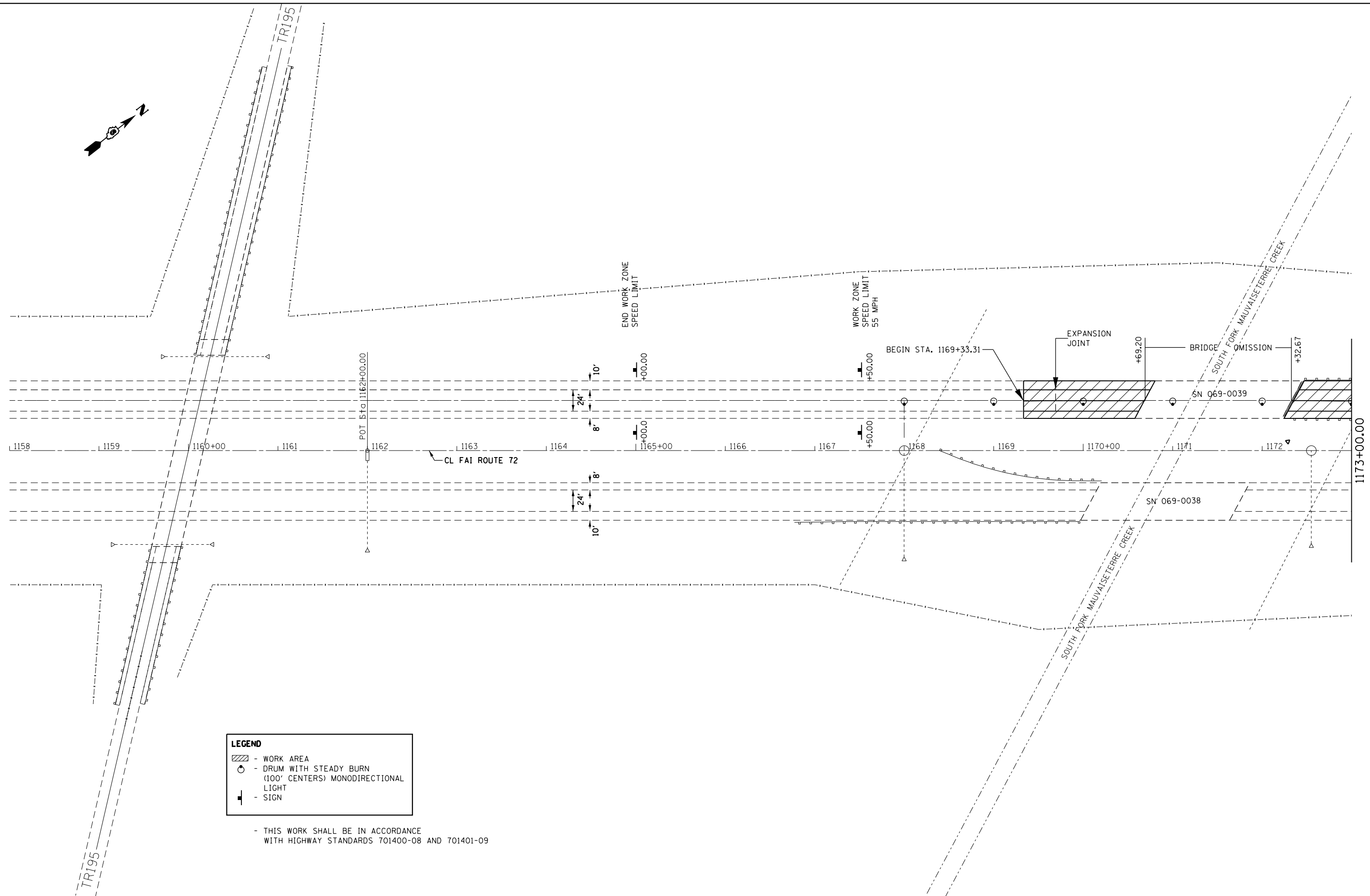
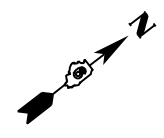
PROFILE	SURVEYED	BY	DATE
	PLOTTED		
	GRADES CHECKED		
	STRUCTURE NOTATIONS CHECKED		
	NOTE BOOK NO.		
	CADD FILE NAME		



BM CB-0142 - chis [] on SW cor of S wall, EB 36-72
SN 069-0041 ELEV = 651.132



FILE NAME =	USER NAME = Verenskifa	DESIGNED -	REVISED -	STATE OF ILLINOIS DEPARTMENT OF TRANSPORTATION	PLAN & PROFILE	F.A.I. RTE.	SECTION	COUNTY	TOTAL SHEETS	SHEET NO.	
Default	pwt:\IL084EBIDINTEG\Illinois.gov\PIDOT\Documents\IDOT Offices\District 6\Projects\0672119 - sht-Plan.&Profile\0672119 - sht-Plan.&Profile.dwg	DRAWN	PREPARED			72	(69-8,9) 1-2	MORGAN	17	8	
	PLOT SCALE = 100.0000' / in.	CHECKED -	REVISED -			SCALE:		SHEET OF SHEETS		STA. TO STA.	CONTRACT NO. 72119
	PLOT DATE = 3/25/2016	DATE -	REVISED -			ILLINOIS FED. AID PROJECT					



LEGEND	
	- WORK AREA
	- DRUM WITH STEADY BURN (100' CENTERS) MONODIRECTIONAL LIGHT
	- SIGN

- THIS WORK SHALL BE IN ACCORDANCE WITH HIGHWAY STANDARDS 701400-08 AND 701401-09

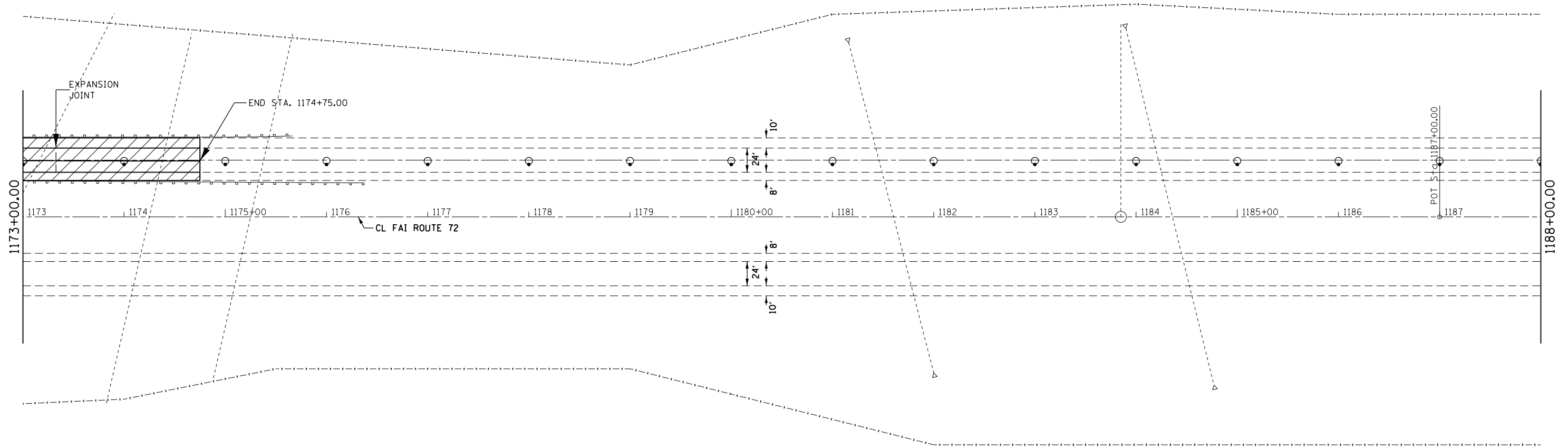
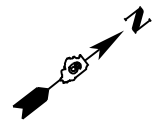
FILE NAME =	USER NAME = Verenskif	DESIGNED -	REVISED -
pw:\IL\084EBIDINTEG\illinois.gov\PIDOT\Documents\IDOT Offices\District 6\Projects\067219\Drawings\CAD\Sheets\067219-sht-Plan Sheet 9.dwg		DRAWN -	REVISED -
Default	PLOT SCALE = 100.0000' / in.	CHECKED -	REVISED -
	PLOT DATE = 3/25/2016	DATE -	REVISED -

**STATE OF ILLINOIS
DEPARTMENT OF TRANSPORTATION**

TRAFFIC CONTROL PLAN LAYOUT

SCALE: SHEET OF SHEETS STA. TO STA.

F.A.I. RTE.	SECTION	COUNTY	TOTAL SHEETS	SHEET NO.
72	(69-8,9) I-2	MORGAN	17	9
ILLINOIS FED. AID PROJECT			CONTRACT NO. 72119	



LEGEND	
	- WORK AREA
	- DRUM WITH STEADY BURN (100' CENTERS) MONODIRECTIONAL LIGHT
	- SIGN

- THIS WORK SHALL BE IN ACCORDANCE
WITH HIGHWAY STANDARDS 701400-08 AND 701401-09

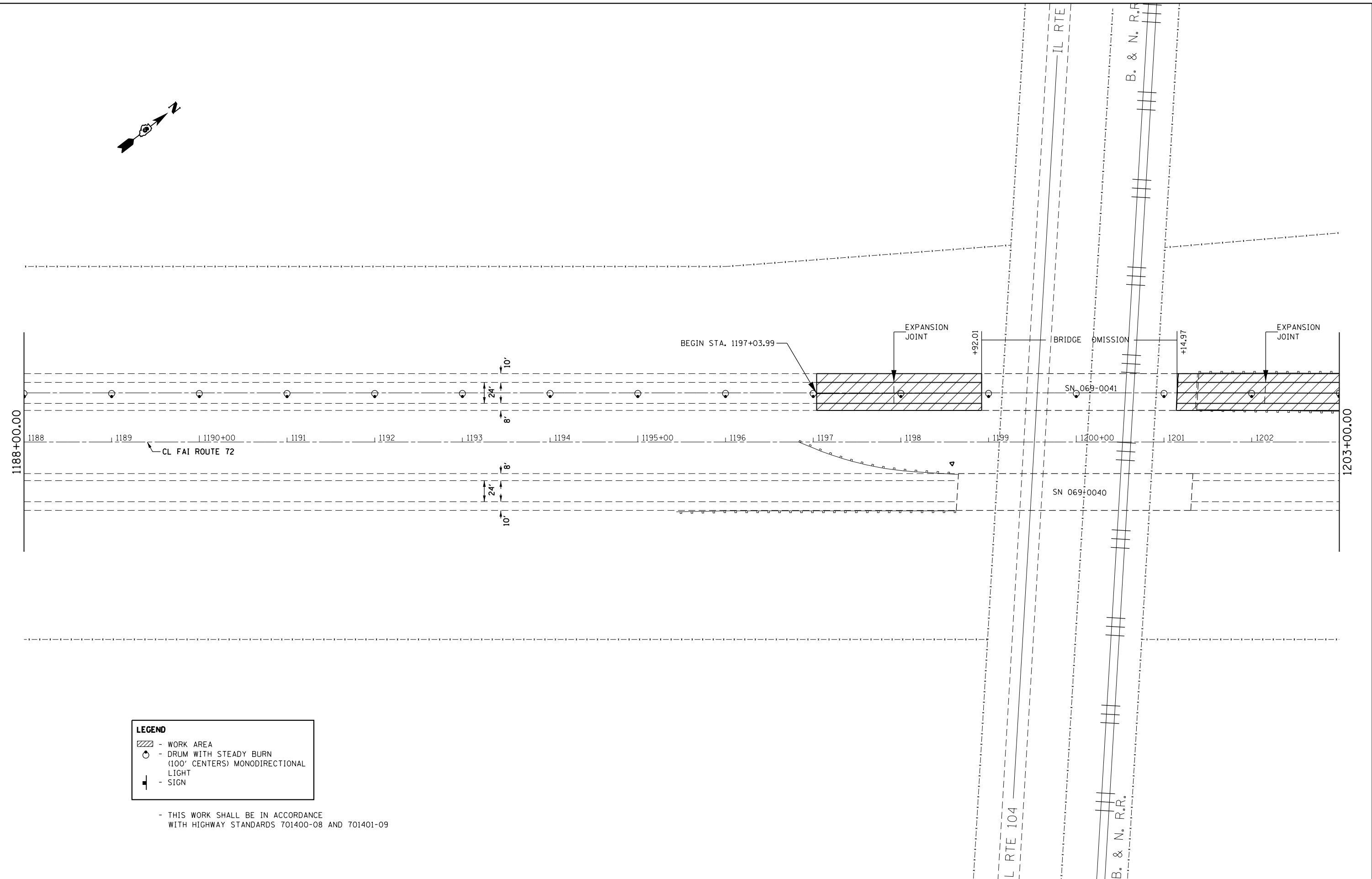
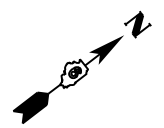
FILE NAME =	USER NAME = Verenskif	DESIGNED -	REVISED -
pw:\IL\084EBIDINTEG\illinois.gov\PIWIDOT\Documents\DOT Offices\District 6\Projects\0672119\Drawings\GADsheets\0672119-sht-Plan Sheet 10.dwg		DRAWN -	REVISED -
Default	PLOT SCALE = 100.0000' / in.	CHECKED -	REVISED -
	PLOT DATE = 3/25/2016	DATE -	REVISED -

**STATE OF ILLINOIS
DEPARTMENT OF TRANSPORTATION**

TRAFFIC CONTROL PLAN LAYOUT

SCALE: SHEET OF SHEETS STA. TO STA.

F.A.I. R.T.E.	SECTION	COUNTY	TOTAL SHEETS	SHEET NO.
72	(69-8,9) I-2	MORGAN	17	10
CONTRACT NO. 72119			ILLINOIS FED. AID PROJECT	



LEGEND	
	- WORK AREA
	- DRUM WITH STEADY BURN (100' CENTERS) MONODIRECTIONAL LIGHT
	- SIGN

- THIS WORK SHALL BE IN ACCORDANCE WITH HIGHWAY STANDARDS 701400-08 AND 701401-09

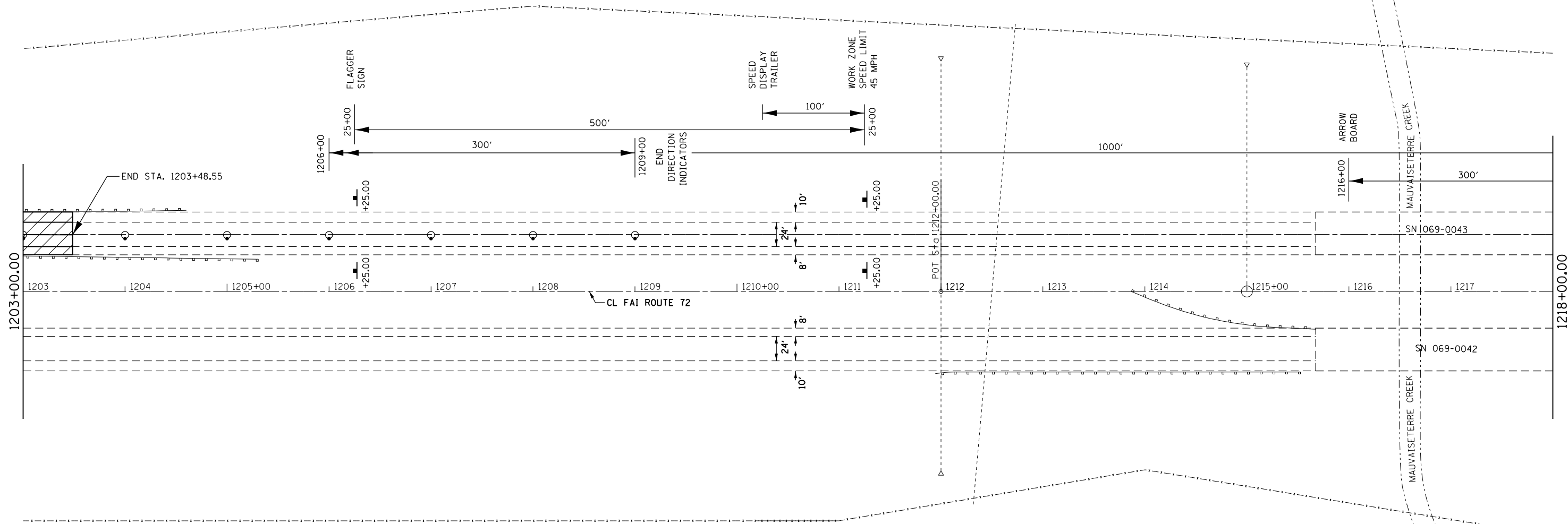
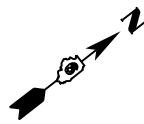
FILE NAME =	USER NAME = Verenskif	DESIGNED -	REVISED -
pw\11084EBIDINTEG\illinois.gov\PI\DOT\Documents\DOT Offices\District 6\Projects\067219\Drawings\GADsheets\067219-sht-Plan Sheet		DRAWN -	REVISED -
Default	PLOT SCALE = 100.0000' / in.	CHECKED -	REVISED -
	PLOT DATE = 3/25/2016	DATE -	REVISED -

**STATE OF ILLINOIS
DEPARTMENT OF TRANSPORTATION**

TRAFFIC CONTROL PLAN LAYOUT

SCALE:	SHEET	OF	SHEETS	STA.	TO	STA.
--------	-------	----	--------	------	----	------

F.A.I. RTE.	SECTION	COUNTY	TOTAL SHEETS	SHEET NO.
72	(69-8,9) I-2	MORGAN	17	11
CONTRACT NO. 72119			ILLINOIS FED. AID PROJECT	



LEGEND	
	- WORK AREA
	- DRUM WITH STEADY BURN (100' CENTERS) MONODIRECTIONAL LIGHT
	- SIGN

- THIS WORK SHALL BE IN ACCORDANCE WITH HIGHWAY STANDARDS 701400-08 AND 701401-09

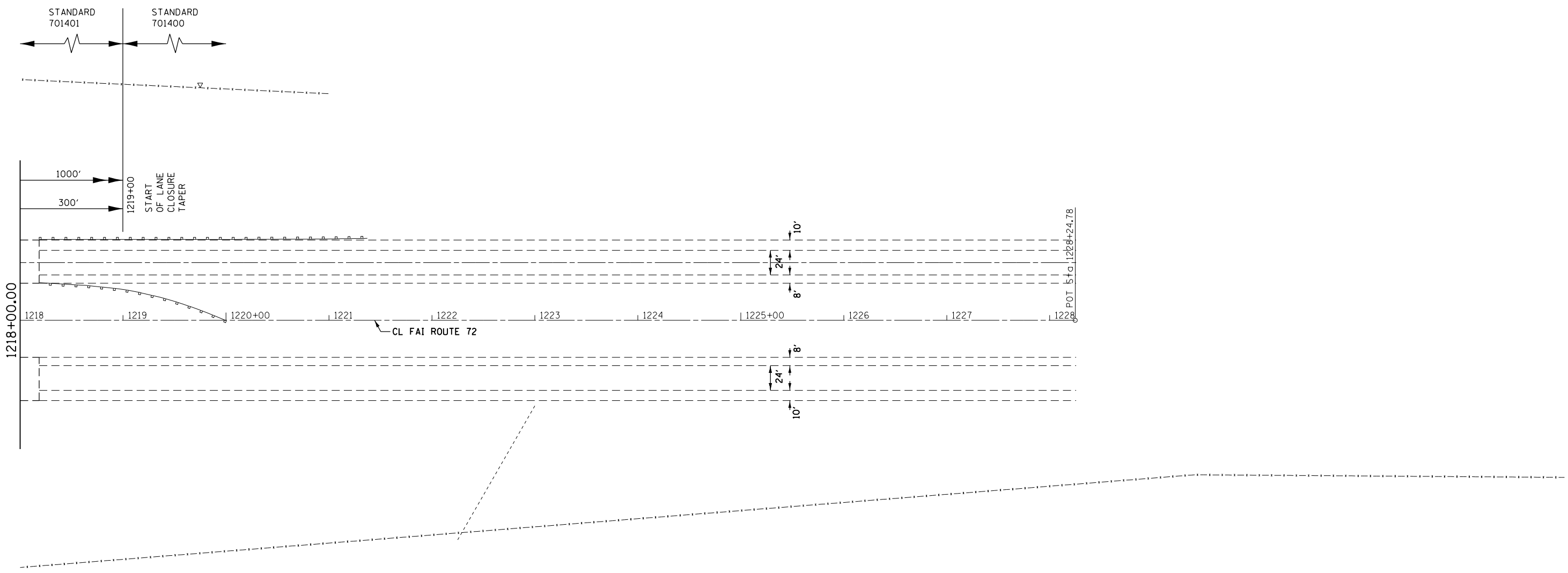
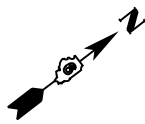
FILE NAME =	USER NAME = Verenskif	DESIGNED -	REVISED -
pw:\IL\084EBIDINTEG\Illinois.gov\PI\DOT\Documents\DOT Offices\District 6\Projects\067219\Drawings\GAD\Sheets\067219-sht-Plan Sheet		DRAWN -	REVISED -
Default	PLOT SCALE = 100.0000' / in.	CHECKED -	REVISED -
	PLOT DATE = 3/25/2016	DATE -	REVISED -

**STATE OF ILLINOIS
DEPARTMENT OF TRANSPORTATION**

TRAFFIC CONTROL PLAN LAYOUT

SCALE: SHEET OF SHEETS STA. TO STA.

F.A.I. RTE.	SECTION	COUNTY	TOTAL SHEETS	SHEET NO.
72	(69-8,9) I-2	MORGAN	17	12
ILLINOIS FED. AID PROJECT			CONTRACT NO. 72119	



LEGEND	
	- WORK AREA
	- DRUM WITH STEADY BURN (100' CENTERS) MONODIRECTIONAL LIGHT
	- SIGN

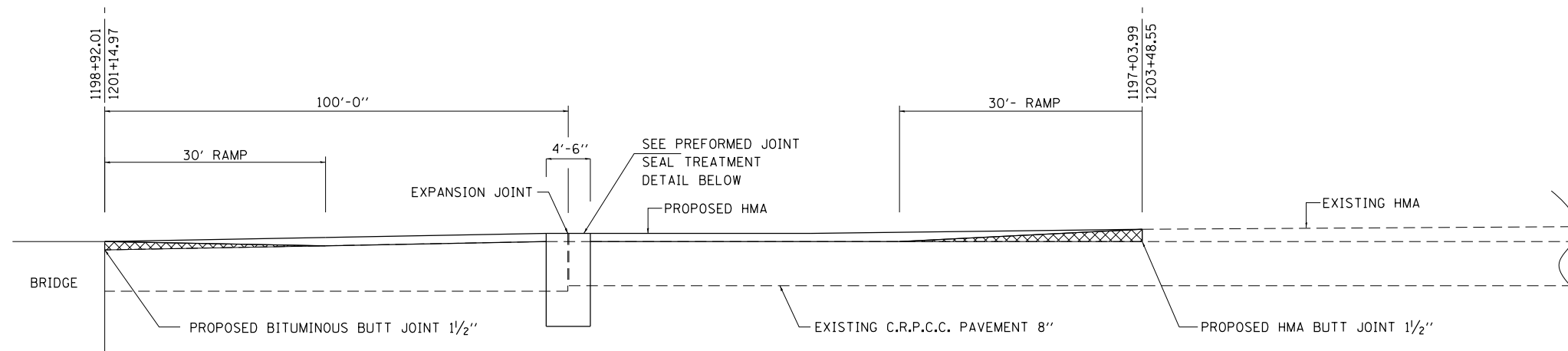
- THIS WORK SHALL BE IN ACCORDANCE WITH HIGHWAY STANDARDS 701400-08 AND 701401-09

FILE NAME =	USER NAME = Verenskif	DESIGNED -	REVISED -
pw\11084EBIDINTEG.illinois.gov\PI\DOT\Documents\DOT Offices\District 6\Projects\067219\Drawings\GADsheets\067219-sht-Plan Sheet		DRAWN -	REVISED -
Default	PLOT SCALE = 100.0000' / in.	CHECKED -	REVISED -
	PLOT DATE = 3/25/2016	DATE -	REVISED -

**STATE OF ILLINOIS
DEPARTMENT OF TRANSPORTATION**

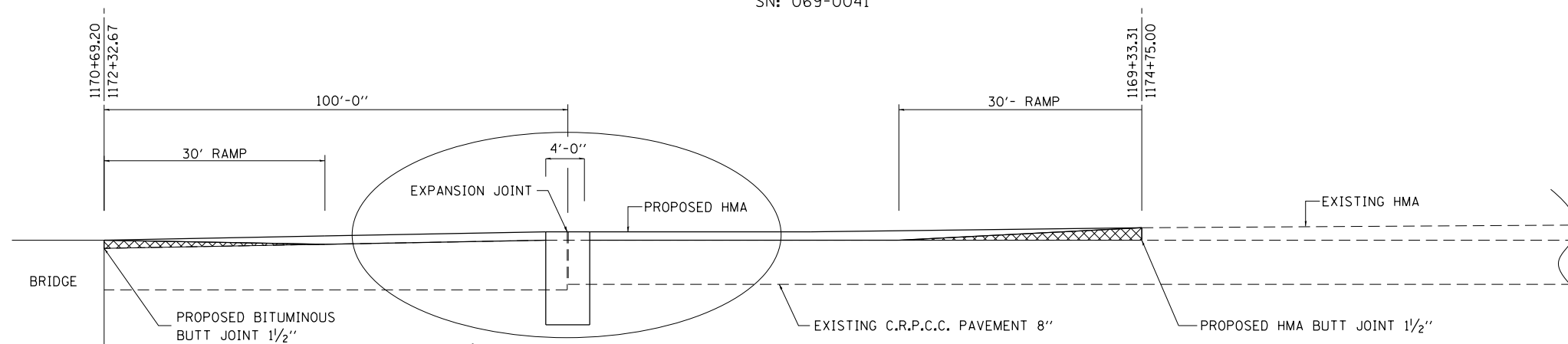
TRAFFIC CONTROL PLAN LAYOUT			
SCALE:	SHEET	OF	SHEETS
	STA.	TO	STA.

F.A.I. RTE.	SECTION	COUNTY	TOTAL SHEETS	SHEET NO.
72	(69-8,9) I-2	MORGAN	17	13
CONTRACT NO.			72119	
ILLINOIS FED. AID PROJECT				



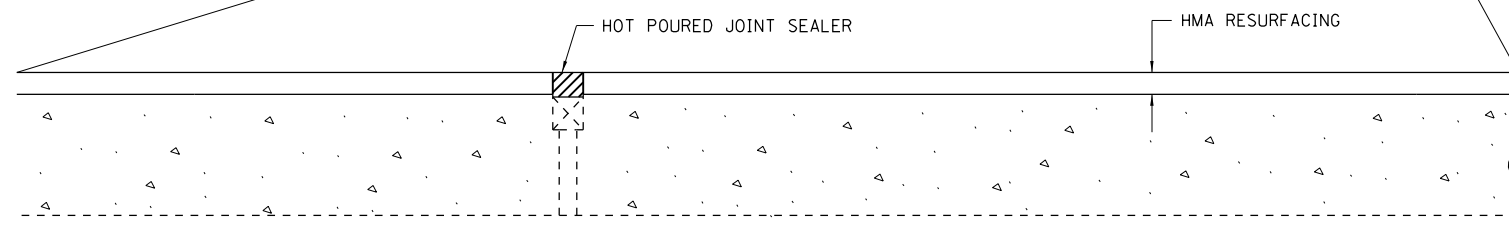
BUTT JOINT DETAIL

SN: 069-0041



BUTT JOINT DETAIL

SN: 069-0039



**PREFORMED JOINT SEAL TREATMENT
SECTION A-A (AT PREFORMED JOINT)**

NOTE: CONTRACTOR TO SURFACE OVER EXISTING PREFORMED JOINT SEALER. UPON COMPLETION OF RESURFACING, CONTRACTOR IS TO SAW CUT AT THE EDGE OF THE PJS AND REMOVE THE BITUMINOUS MATERIAL. COST TO BE INCLUDED WITH HMA SURFACE COURSE.

CONTRACTOR TO PLACE HOT POURED JOINT SEALER PER STANDARD SPECIFICATION 1050.02 OVER PJS, COST TO BE INCLUDED WITH HMA SURFACE COURSE.

CONTRACTOR IS TO NOTE LOCATION OF PREFORMED JOINT SEAL PRIOR TO RESURFACING TO ALLOW EDGES TO BE IDENTIFIED FOR SAW CUT LOCATION.

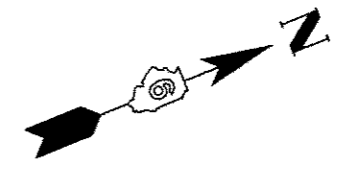
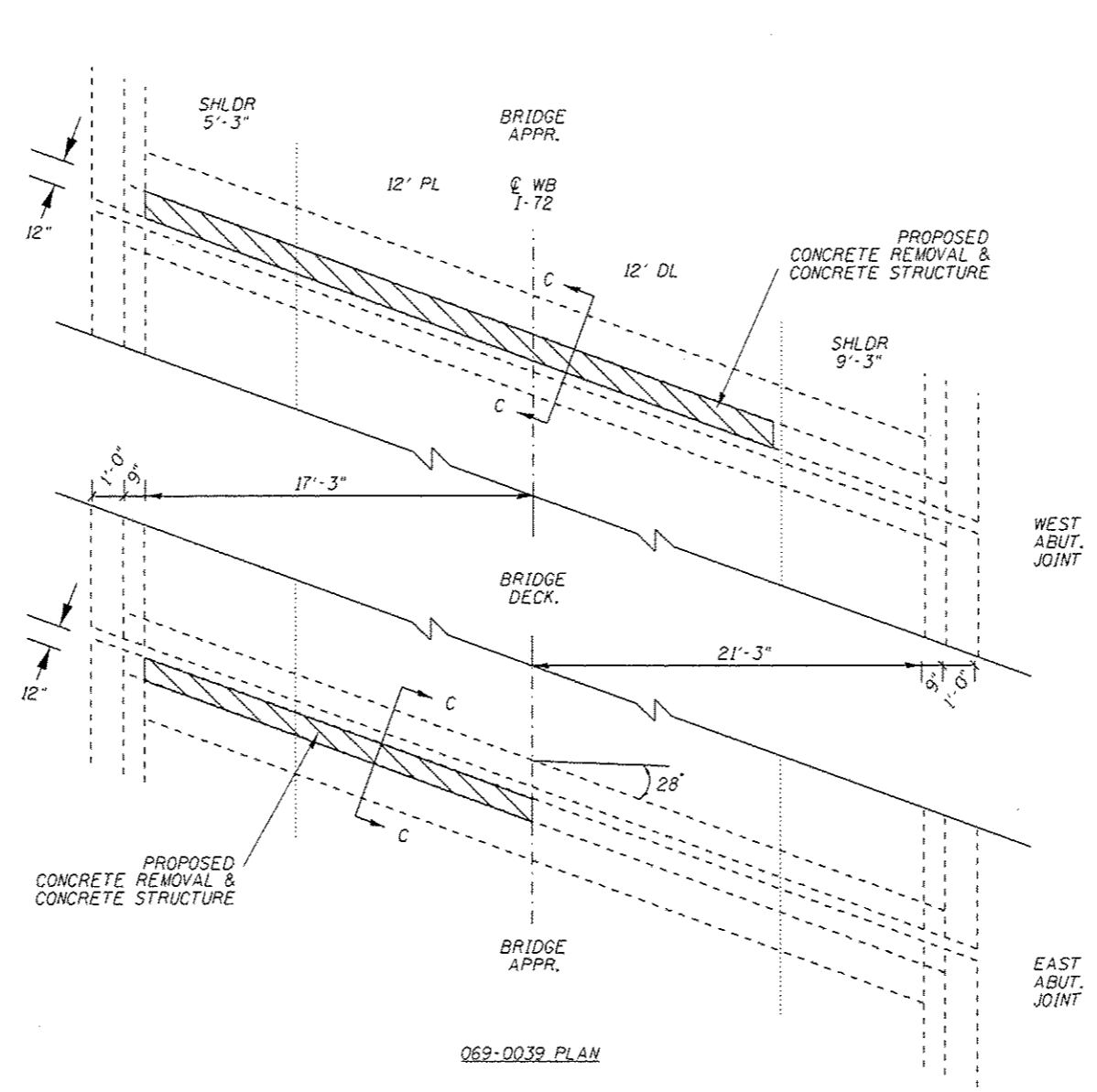
FILE NAME =	USER NAME = Verenskif	DESIGNED -	REVISED -
pw:\IL\084EBIDINTEG\illinois.gov\PWIDOT\Documents\DOT Offices\District 6\Projects\067219\Drawings\CAD\Sheets\067219-sht-details		CHECKED -	REVISED -
Default	PLOT DATE = 3/25/2016	DATE -	REVISED -

**STATE OF ILLINOIS
DEPARTMENT OF TRANSPORTATION**

BUTT JOINT DETAIL

SCALE: SHEET OF SHEETS STA. TO STA.

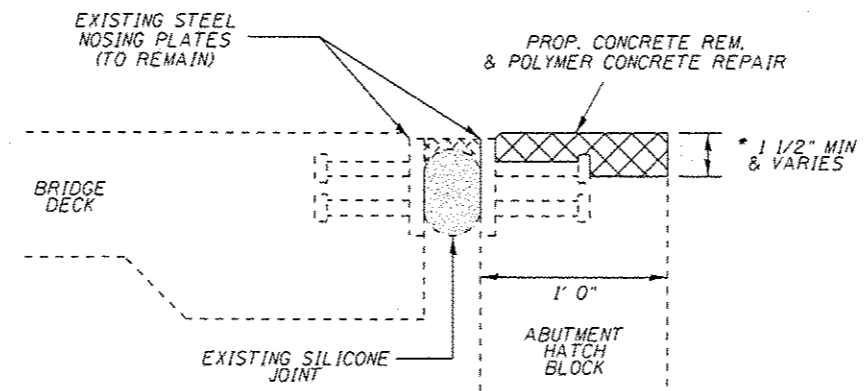
F.A.I. RTE.	SECTION	COUNTY	TOTAL SHEETS	SHEET NO.
72	(69-8,9) I-2	MORGAN	17	14
CONTRACT NO.			72119	
ILLINOIS FED. AID PROJECT				



069-0039 PLAN

TOTAL BILL OF MATERIAL
SN 069-0039

ITEM	UNIT	WEST JOINT	EAST JOINT	TOTAL
CONCRETE REMOVAL	CU YD	0.3	0.2	0.5
POLYMER CONCRETE	CU FT	8.4	4.9	13.3



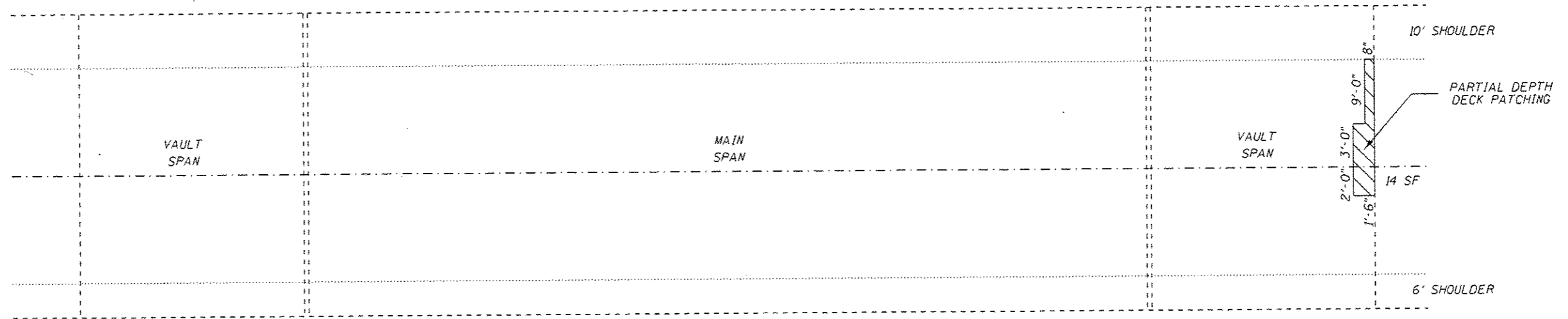
SECTION C-C (STEEL PLATE NOSINGS)
 TYPICAL JOINT CROSS SECTION;
 ABUTMENT HATCH BLOCK REPLACEMENT

* CONCRETE REMOVAL ON THE ABUTMENT HATCH BLOCK SHALL BE DEEP ENOUGH TO REMOVE ALL UNSOUND CONCRETE, BUT SHALL NOT BE LESS THAN 1 1/2". REMOVAL & REPLACEMENT QUANTITIES ARE CALCULATED AT A DEPTH OF 3".

NOTES:

IN APPLICATIONS WITH EXISTING STEEL NOSINGS, THE CONTRACTOR SHALL TAKE CARE NOT TO DAMAGE THE EXISTING STUDS ATTACHED TO THE STEEL PLATES. ANY STUDS THAT ARE DAMAGED SHALL BE REPLACED WITH NEW 8" STUDS CONFORMING TO ARTICLE 1006.32, OR ALTERNATE ANCHORING DEVICE APPROVED BY THE ENGINEER. NO ADDITIONAL COMPENSATION WILL BE ALLOWED FOR REPAIRING ANCHORING STUDS DAMAGED BY THE CONTRACTOR'S ACTIVITIES.

FILE NAME *	USER NAME * pararava	DESIGNED -	REVISED -	STATE OF ILLINOIS DEPARTMENT OF TRANSPORTATION	JOINT REPAIR APPLICATIONS DETAIL				F.A.I. RTE.	SECTION	COUNTY	TOTAL SHEETS	SHEET NO.
Default	Default	Default	Default						72	(69-8,9) 1-2	MORGAN	17	16
PLOT SCALE * 100.0000 / 1"	CHECKED -	REVISED -	REVISED -		SCALE:	SHEET	OF	SHEETS	STA.	TO STA.	ILLINOIS FED. AID PROJECT CONTRACT NO. 72I19		
PLOT DATE * 4/4/2016	DATE -	REVISED -	REVISED -										



DECK SLAB REPAIR (PARTIAL)

172 (SN 069-0041)

TOTAL BILL OF MATERIAL
SN 069-0041

ITEM	UNIT	SUPER	SUB	TOTAL
DECK SLAB REPAIR (PARTIAL DEPTH)	SO YD	1.5	-	1.5

FILE NAME : p:\IL084EBID\INTEG.illinois.gov\PI100T\De	USER NAME : pererova	DESIGNED - TMW	REVISED -	STATE OF ILLINOIS DEPARTMENT OF TRANSPORTATION	SN 069-0041 DECK PATCHING PLAN DETAIL		F.A.I. RTE. 72	SECTION (69-8,9) 1-2	COUNTY MORGAN	TOTAL SHEETS 17	SHEET NO. 17
	PLOT SCALE = 100.0000' / in.	CHECKED - VTY	REVISED -				ILLINOIS FED. AID PROJECT				
Default	PLOT DATE = 4/4/2016	DATE -	REVISED -	SCALE:	SHEET OF SHEETS	STA. TO STA.	CONTRACT NO. 72119				