

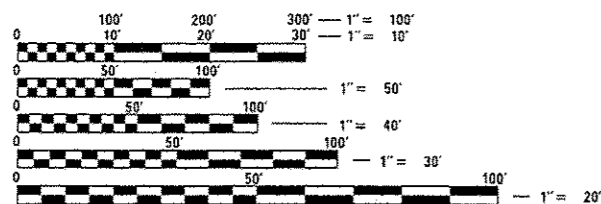
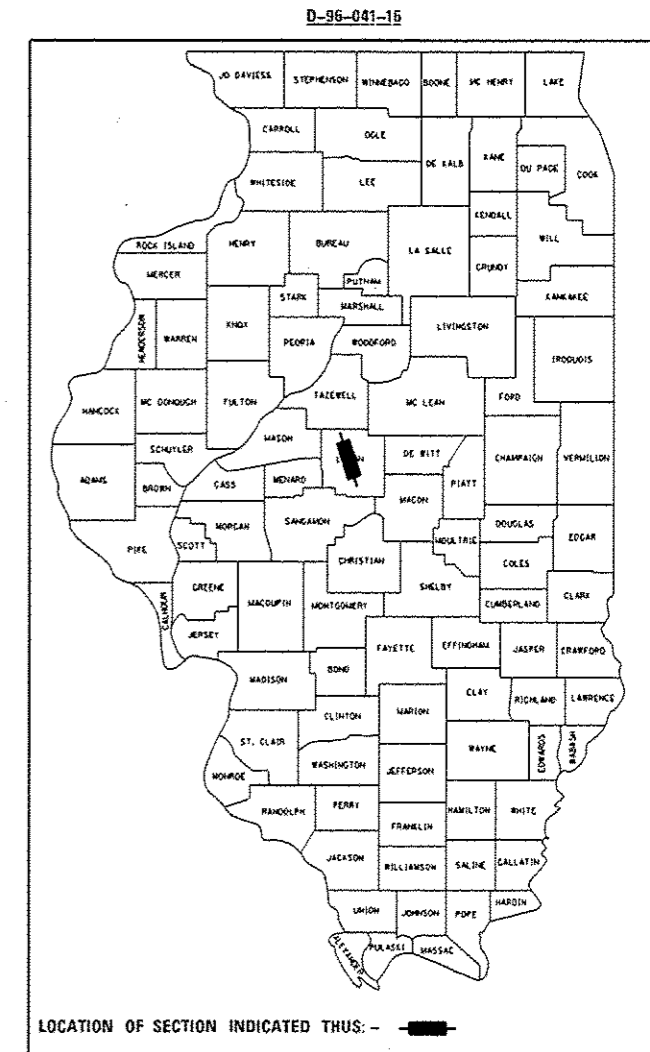
STATE OF ILLINOIS
DEPARTMENT OF TRANSPORTATION
DIVISION OF HIGHWAYS
PROPOSED
HIGHWAY PLANS

F.A.L. RTE.	SECTION	COUNTY	TOTAL SHEETS	SHEET NO.
155	(54-4) RS-5	LOGAN	24	1
		ILLINOIS	CONTRACT NO. 72J04	

INDEX OF SHEETS

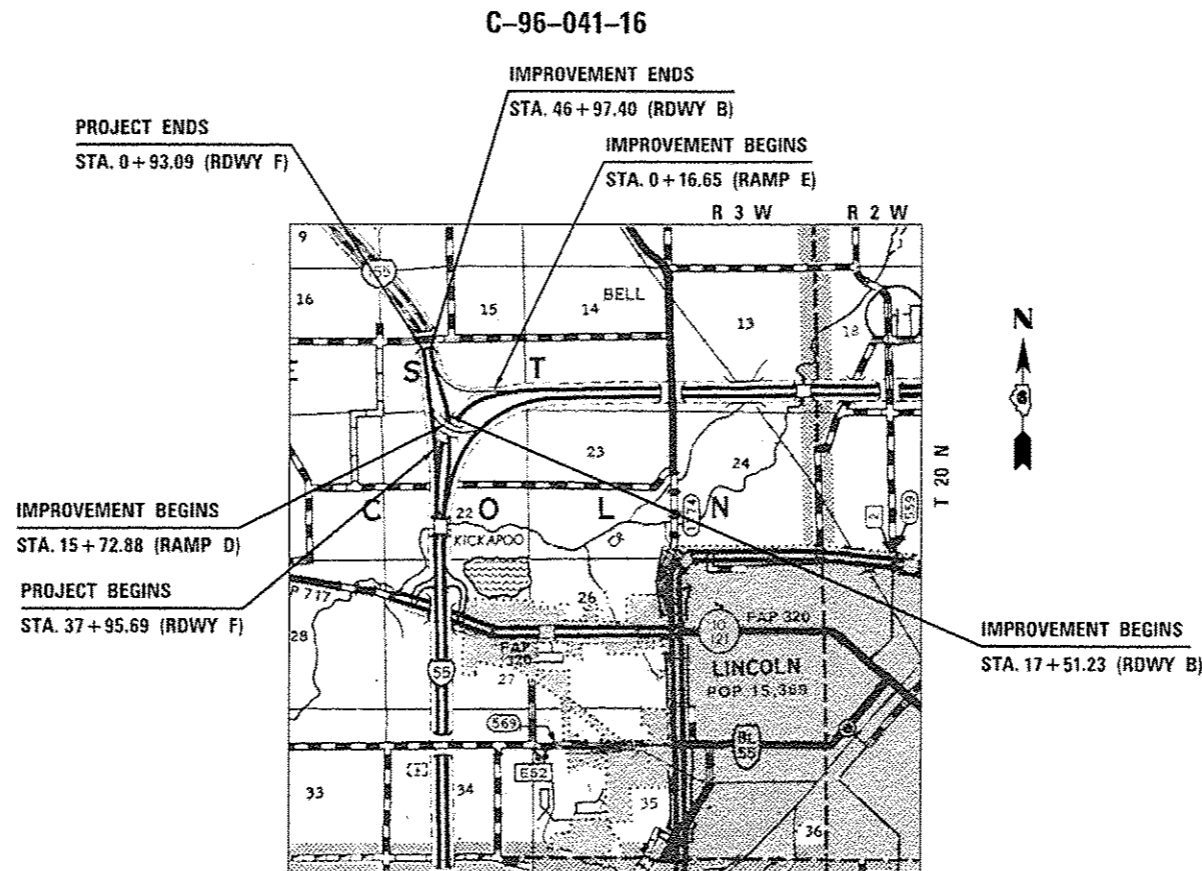
SHEET	#DESCRIPTION
1	COVER SHEET
2	HIGHWAY STANDARDS, GENERAL NOTES
	APPLICATION RATES, MIXTURE REQUIREMENTS, SIGNATURES
3-4	SUMMARY OF QUANTITIES
5-7	SCHEDULE OF QUANTITIES
8-10	TYPICAL SECTIONS
11-13	PLAN SHEETS
14-16	PAVEMENT MARKING PLAN SHEETS
17	MODIFIED TRAFFIC CONTROL & PROTECTION STANDARD 701400
18	MODIFIED TRAFFIC CONTROL & PROTECTION STANDARD 701401
19	TYPICAL PAVEMENT MARKING DETAILS
20	CLASS B PATCHING DETAIL
21	EXIT RAMP DETAILS
22	ENTRANCE RAMP DETAILS
23	BUTT JOINT AND TRANSITION DETAILS
24	UNDERDRAIN OUTLET MARKER & RIPRAP DETAILS

FAI ROUTE 155 (I-155)
SECTION (54-4) RS-5
PROJECT : ACNHPP-0155(012)
RESURFACING, 3R
LOGAN COUNTY



FULL SIZE PLANS HAVE BEEN PREPARED USING STANDARD ENGINEERING SCALES. REDUCED SIZED PLANS WILL NOT CONFORM TO STANDARD SCALES. IN MAKING MEASUREMENTS ON REDUCED PLANS, THE ABOVE SCALES MAY BE USED.

J.U.L.I.E.
 JOINT UTILITY LOCATION INFORMATION FOR EXCAVATION
 1-800-892-0123
 OR 811



GROSS LENGTH (RDWY F) = 3,702.60 FT. = 0.701 MILE
 NET LENGTH (RDWY F) = 3,702.60 FT. = 0.701 MILE

PROJECT ENGINEER: KEITH DONOVAN (217) 782-4761
 PROJECT MANAGER: TOM COX (217) 557-6349

CONTRACT NO. 72J04

MAINLINE	RAMP "D"	RAMP "E"
ADT = 9,250(2015)	ADT = 50(2011)	ADT = 50(2011)
SU = 21.6%	SU = 4%	SU = 2%
MU = 17.3%	MU = 10%	MU = 16%

STATE OF ILLINOIS
 DEPARTMENT OF TRANSPORTATION
 DIVISION OF HIGHWAYS

SUBMITTED 3/18/2016

[Signature]
 DEPUTY DIRECTOR OF HIGHWAYS, REGION ENGINEER

[Signature]
 acting ENGINEER OF DESIGN AND ENVIRONMENT

[Signature]
 DIRECTOR OF HIGHWAYS, CHIEF ENGINEER

**PRINTED BY THE AUTHORITY
 OF THE STATE OF ILLINOIS**

HIGHWAY STANDARDS

STANDARD	DESCRIPTION
000001-06	STANDARD SYMBOLS, ABBREVIATIONS, AND PATTERNS
001001-02	AREAS OF REINFORCEMENT BARS
001006	DECIMAL OF AN INCH AND OF A FOOT
420001-08	PAVEMENT JOINTS
442001-04	CLASS A PATCHES
442101-07	CLASS B PATCHES
635001-02	DELINEATORS
642001-02	SHOULDER RUMBLE STRIPS, 16 INCH
701101-05	OFF-RD OPERATIONS, MULTILANE, 15' (4.5 M) TO 24' (600 MM) FROM PAVEMENT EDGE
701400-08	APPROACH TO LANE CLOSURE, FREEWAY/EXPRESSWAY
701401-09	LANE CLOSURE, FREEWAY / EXPRESSWAY
701411-09	LANE CLOSURE, MULTILANE, AT ENTRANCES OR EXIT RAMP, FOR SPEEDS > OR = 45 MPH
701426-08	LANE CLOSURE, MULTILANE, INTERMITTENT OR MOVING OPERATION FOR SPEEDS > OR = 45 MPH
701428-01	TRAFFIC CONTROL SETUP AND REMOVAL FREEWAY / EXPRESSWAY
701451-03	RAMP CLOSURE FREEWAY / EXPRESSWAY
701456-03	PARTIAL EXIT RAMP CLOSURE FREEWAY / EXPRESSWAY
701901-05	TRAFFIC CONTROL DEVICES
728001-01	TELESCOPING STEEL SIGN SUPPORT
780001-05	TYPICAL PAVEMENT MARKINGS
781001-04	TYPICAL APPLICATIONS RAISED REFLECTIVE PAVEMENT MARKERS
782006	GUARDRAIL AND BARRIER WALL REFLECTOR MOUNTING DETAILS

GENERAL NOTES:

- ANY REFERENCE TO A STANDARD IN THESE PLANS SHALL BE INTERPRETED TO MEAN THE EDITION AS INDICATED BY THE SUBNUMBER LISTED ON THE INDEX OF SHEETS OR THE COPY OF THE STANDARD INCLUDED IN THESE PLANS.
- ALL OF THE DISTURBED AREAS WITHIN THE RIGHT-OF-WAY NOT COVERED BY SURFACING MATERIAL SHALL BE SEEDED.
- SEEDING WILL NOT BE PERMITTED AT ANY TIME WHEN THE GROUND IS FROZEN, WET OR IN AN UNTILLABLE CONDITION. LOCATIONS TO BE SEEDED SHALL BE DETERMINED BY THE ENGINEER.
- THE LOCATIONS OF THE BURIED AND ABOVE GROUND UTILITIES SHOWN IN THE PLANS ARE APPROXIMATE. THE CONTRACTOR SHALL BE RESPONSIBLE FOR PROTECTING UTILITY PROPERTY FROM CONSTRUCTION OPERATIONS AS OUTLINED IN ARTICLE 107.26 OF THE STANDARD SPECIFICATIONS. THE J.U.L.I.E. NUMBER IS (800) 892-0123. A MINIMUM OF FORTY-EIGHT HOURS ADVANCED NOTICE IS REQUIRED PRIOR TO PROCEEDING WITH ANY EXCAVATION WORK ON THE PROJECT.
- THE THICKNESS OF HOT-MIX ASPHALT MIXTURES SHOWN ON THE PLANS IS THE NOMINAL THICKNESS. DEVIATIONS FROM THE NOMINAL THICKNESS WILL BE PERMITTED WHEN SUCH DEVIATIONS OCCUR DUE TO IRREGULARITIES IN THE EXISTING SURFACE OR BASE ON WHICH THE HOT-MIX ASPHALT MIXTURE IS PLACED.
- FOR STABILIZATION, ALL TYPE III BARRICADES SHALL REQUIRE A MINIMUM OF FOUR SANDBAGS PER BARRICADE.
- WHERE SECTION OR SUBSECTION MONUMENTS ARE ENCOUNTERED, THE ENGINEER SHALL BE NOTIFIED BEFORE SUCH MONUMENTS ARE REMOVED. THE CONTRACTOR SHALL PROTECT AND CAREFULLY PRESERVE ALL MONUMENTS UNTIL AN AUTHORIZED SURVEYOR OR AGENT HAS WITNESSED OR OTHERWISE REFERENCED THEIR LOCATION. THE CONTRACTOR SHALL BE RESPONSIBLE FOR HAVING AN AUTHORIZED SURVEYOR RE-ESTABLISH ANY SECTION OR SUBSECTION MONUMENTS DESTROYED BY HIS OPERATIONS.
- ALL ELEVATIONS REFER TO U.S.G.S. MEAN SEA LEVEL DATUM.
- UNLESS NOTED OTHERWISE, STATIONS AND OFFSETS REFER TO THE ROADWAY CENTERLINE OR BASELINE.
- IN ADDITION TO FIELD SURVEYS AND AERIAL SURVEYS, PLAN DIMENSIONS AND DETAILS RELATIVE TO THE EXISTING FACILITIES HAVE BEEN TAKEN FROM EXISTING PLANS AND ARE SUBJECT TO CONSTRUCTION VARIATIONS. IT SHALL BE THE CONTRACTOR'S RESPONSIBILITY TO VERIFY SUCH DIMENSIONS AND DETAILS IN THE FIELD. SUCH VARIATIONS SHALL NOT BE A CAUSE FOR ADDITIONAL COMPENSATION DUE TO A CHANGE IN THE SCOPE OF THE WORK. HOWEVER, THE CONTRACTOR WILL BE PAID FOR THE QUANTITY ACTUALLY FURNISHED AT THE UNIT PRICE BID FOR THE WORK.
- RAISED REFLECTIVE PAVEMENT MARKERS INSTALLED INTO THE ORIGINAL CONCRETE PAVEMENT MAY NOT HAVE BEEN REMOVED WHEN THE PAVEMENT WAS RESURFACED. ANY MARKERS FOUND IN THE ORIGINAL CONCRETE WILL BE REMOVED AND PAID FOR AS RAISED REFLECTIVE PAVEMENT MARKER REMOVAL.
- QUANTITY FOR PAY ITEM "X4820110 - HMA SHOULDER REMOVAL AND REPLACEMENT (SPECIAL)" IS AN ESTIMATED QUANTITY TO BE USED AT THE DIRECTION OF THE ENGINEER IN THE FIELD.
- THE CONTRACTOR SHALL VERIFY ALL DIMENSIONS AND CONDITIONS IN THE FIELD PRIOR TO CONSTRUCTION AND ORDERING OF MATERIALS
- THE CONTRACTOR SHALL APPLY SHORT TERM PAVEMENT MARKINGS TO THE BINDER AND SURFACE COURSE. A QUANTITY FOR SHORT TERM PAVEMENT MARKING HAS BEEN INCLUDED IN THE PLANS. ONLY THE FINAL APPLICATION OF SHORT TERM PAVEMENT MARKINGS SHALL BE REMOVED AND SEPARATE PAYMENT WILL BE MADE FOR SHORT TERM PAVEMENT MARKING REMOVAL.
- THE REMOVAL OF ANY REQUIRED TEMPORARY PAVEMENT MARKINGS IN AREAS TO BE GROOVED WILL NOT BE MEASURED FOR PAYMENT AND WILL BE CONSIDERED INCIDENTAL TO THE GROOVING.

APPLICATION RATES

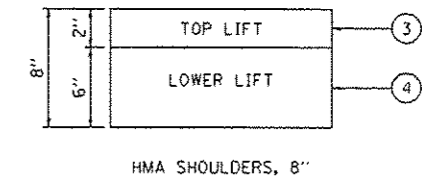
THE FOLLOWING RATES OF APPLICATION HAVE BEEN USED IN CALCULATING PLAN QUANTITIES:

MATERIAL	RATE	UNIT
GRANULAR MATERIALS	2.05	TON / CU YD
RIPRAP	1.75	TON / CU YD
BITUMINOUS MATERIALS PRIME COAT	0.05	LB / SQ FT (REGULAR)
	0.025	LB / SQ FT (FOG COAT)
HMA RESURFACING (BINDER, SURF) (112 LBS)	0.056	TON/SO YD*IN

MIXTURE REQUIREMENT

THE FOLLOWING MIXTURE REQUIREMENTS ARE APPLICABLE FOR THIS PROJECT				
MIX NUMBER:	1	2	3	4
MIX USE:	INTERSTATE MAINLINE PAVEMENT & RAMP (POLYMER HMA BINDER)	INTERSTATE MAINLINE PAVEMENT AND RAMP (POLYMER HMA SURF COURSE)	INTERSTATE SHOULDERS, HMA SHOULDERS, 8" (TOP LIFT 2" MIN.)	HMA SHOULDERS, 8" (LOWER LIFTS)
AC/PG:	SBS PG 70-22	SBS PG 70-22	PG 64-22	PG 64-22
DESIGN AIR VOIDS:	4.0% @ N90	4.0% @ N90	4.0% @ N50	4.0% @ N50
MIXTURE COMPOSITION:	IL 19.0	IL 9.5	IL 9.5	IL 19.0
FRICTION AGGREGATE:	N/A	MIX E	MIX C	N/A
QUALITY MANAGEMENT:	OCP	OCP	OC/OA	OC/OA

ASPHALT PAVING LIFT DIAGRAM



SIGNATURES

DISTRICT SIX
 EXAMINED March 16th 20 16
Mr. C. W. [Signature]
 OPERATIONS ENGINEER

EXAMINED March 15 20 16
John P. Myer
 PROGRAM DEVELOPMENT ENGINEER

EXAMINED March 9 20 16
Ron [Signature]
 PROJECT IMPLEMENTATION ENGINEER

CODE NO.	ITEM	UNIT	TOTAL QUANTITY	PPS NO.	
				6-00362-0000	90% FED 10% STATE ROADWAY 0005 RURAL
28200200	FILTER FABRIC	SO YD	368	368	
40600285	POLYMERIZED BITUMINOUS MATERIALS (PRIME COAT)	POUND	26,753	26,753	
40600982	HOT-MIX ASPHALT SURFACE REMOVAL - BUTT JOINT	SO YD	942	942	
40600990	TEMPORARY RAMP	SO YD	255	255	
40603240	POLYMERIZED HOT-MIX ASPHALT BINDER COURSE, IL-19.0, N90	TON	3,570	3,570	
40603570	POLYMERIZED HOT-MIX ASPHALT SURFACE COURSE, MIX "E", N90	TON	2,380	2,380	
44000155	HOT-MIX ASPHALT SURFACE REMOVAL, 1 1/2"	SO YD	16,577	16,577	
44000162	HOT-MIX ASPHALT SURFACE REMOVAL, 3 1/4"	SO YD	27,764	27,764	
44200565	CLASS A PATCHES, TYPE II, 11 INCH	SO YD	79	79	
44200569	CLASS A PATCHES, TYPE III, 11 INCH	SO YD	52	52	
44200982	CLASS B PATCHES, TYPE II, 11 INCH	SO YD	87	87	
44200988	CLASS B PATCHES, TYPE IV, 11 INCH	SO YD	27	27	
44201299	DOWEL BARS 1 1/2"	EACH	252	252	
44213000	PATCHING REINFORCEMENT	SO YD	131	131	

CODE NO.	ITEM	UNIT	TOTAL QUANTITY	PPS NO.	
				6-00362-0000	90% FED 10% STATE ROADWAY 0005 RURAL
44213200	SAW CUTS	FOOT	1,360	1,360	
44213204	TIE BARS 3/4"	EACH	31	31	
48102100	AGGREGATE WEDGE SHOULDER, TYPE B	TON	1,274	1,274	
48203100	HOT-MIX ASPHALT SHOULDERS	TON	1,898	1,898	
63300575	REMOVE AND REERECT RAIL ELEMENT OF EXISTING GUARDRAIL	FOOT	1,547	1,547	
64200116	SHOULDER RUMBLE STRIPS, 16 INCH	FOOT	11,519	11,519	
67000400	ENGINEER'S FIELD OFFICE, TYPE A	CAL MO	6	6	
67100100	MOBILIZATION	L SUM	1	1	
70100420	TRAFFIC CONTROL AND PROTECTION, STANDARD 701411	EACH	3	3	
70100800	TRAFFIC CONTROL AND PROTECTION, STANDARD 701401	L SUM	1	1	
70100820	TRAFFIC CONTROL AND PROTECTION, STANDARD 701451	L SUM	1	1	
70100825	TRAFFIC CONTROL AND PROTECTION, STANDARD 701456	L SUM	1	1	
70106800	CHANGEABLE MESSAGE SIGN	CAL MO	9	9	
70300100	SHORT TERM PAVEMENT MARKING	FOOT	2,388	2,388	

CODE NO.	ITEM	UNIT	TOTAL QUANTITY	PPS NO.	
				6-00362-0000	90% FED 10% STATE
				ROADWAY	0005
				RURAL	
70300150	SHORT TERM PAVEMENT MARKING REMOVAL	SO FT	572	572	
70300230	TEMPORARY PAVEMENT MARKING - LINE 5"	FOOT	22,340	22,340	
* 78004220	PREFORMED PLASTIC PAVEMENT MARKING, TYPE B - INLAID - LINE 5"	FOOT	1,930	1,930	
* 78004240	PREFORMED PLASTIC PAVEMENT MARKING, TYPE B - INLAID - LINE 8"	FOOT	1,494	1,494	
* 78004250	PREFORMED PLASTIC PAVEMENT MARKING, TYPE B - INLAID - LINE 12"	FOOT	93	93	
* 78009005	MODIFIED URETHANE PAVEMENT MARKING - LINE 5"	FOOT	22,340	22,340	
* 78100100	RAISED REFLECTIVE PAVEMENT MARKER	EACH	364	364	
* 78200005	GUARDRAIL REFLECTORS, TYPE A	EACH	63	63	
78300200	RAISED REFLECTIVE PAVEMENT MARKER REMOVAL	EACH	364	364	
X0320157	CLEANING UNDERDRAIN OUTLETS	EACH	39	39	
X0322279	OUTLET MARKER	EACH	39	39	
X2503000	MAINTENANCE MOWING	ACRE	7.75	7.75	
X2810108	STONE RIPRAP, CLASS A4 (SPECIAL)	SO YD	368	368	
X4820110	HOT-MIX ASPHALT SHOULDER REMOVAL AND REPLACEMENT (SPECIAL)	SO YD	2,543	2,543	

CODE NO.	ITEM	UNIT	TOTAL QUANTITY	PPS NO.	
				6-00362-0000	90% FED 10% STATE
				ROADWAY	0005
				RURAL	
X6350110	DELINEATORS (SPECIAL)	EACH	103	103	
X6350120	DELINEATOR REMOVAL	EACH	33	33	
X7010410	SPEED DISPLAY TRAILER	CAL MO	6	6	
* X7830072	GROOVING FOR RECESSED PAVEMENT MARKING 6"	FOOT	22,340	22,340	
φ 20070600	TRAINEES	HOOR	1000	1000	
20034105	MATERIAL TRANSFER DEVICE	TON	5,950	5,950	
φ 20070604	TRAINEES TRAINING PROGRAM GRADUATE	HOOR	1000	1000	

5

14

φ 0042
*Specialty Items

FILE NAME :	USER NAME : Veranskifa	DESIGNED -	REVISED -	STATE OF ILLINOIS DEPARTMENT OF TRANSPORTATION	SUMMARY OF QUANTITY	F.A.I. RTE.	SECTION	COUNTY	TOTAL SHEETS	SHEET NO.
\\11084EBID\INTEG\Illinois.gov\PWIDT\Documents\DOT Offices\District 6\Proje\2015\0572JB+-w-500.dwg	PROJECT: 0572JB+-w-500.dwg	CHECKED -	REVISED -			155	(54-4) RS-5	LOGAN	24	4
PLOT SCALE : 100.0000' / 1"	DATE :	DATE :	DATE :			CONTRACT NO. 72J04			ILLINOIS FED. AID PROJECT	
Default	PLOT DATE : 3/21/2015	DATE :	DATE :			SCALE:	SHEET 2	OF 2	SHEETS	STA.

MAINLINE IMPROVEMENTS													
BITUMINOUS MATERIAL (PRIME COAT) RATE (REGULAR) - 0.05 LB / SQ FT BITUMINOUS SURFACE / BINDER (112 LBS) RATE - 0.056 T / SY * IN BITUMINOUS MATERIAL (PRIME COAT) RATE (FOG) - 0.025 LB / SQ FT							40600285 POLYMERIZED BITUMINOUS MATERIALS (PRIME COAT) REGULAR COAT POUND	40600285 POLYMERIZED BITUMINOUS MATERIALS (PRIME COAT) FOG COAT POUND	40603240 POLY HMA BINDER COURSE IL-19.0, N90 TON	40603570 POLY HMA SURF COURSE MIX "E", N90 TON	44000162 HMA SURFACE REMOVAL 3 1/4" SQ YD	20034105 MATERIAL TRANSFER DEVICE TON	
LOCATION	LENGTH	WIDTH	AREA	HMA REMOVAL DEPTH	BINDER DEPTH	SURFACE DEPTH							
STATION TO STATION	FOOT	FOOT	SQ YD	INCH	INCH	INCH							
I-55 NB TO I-155 NB (R002, R002A) 'RDWY B'													
STA 17+51.23 TO STA 34+17.42	1,666.19	24.0	4,443.17	3.25	2.25	1.50	1,999.43	999.71	559.84	373.23	4,336.51	933.07	
STA 34+17.42 TO STA 41+69.30	751.88	40.0 TO 24.0	2,673.35	3.25	2.25	1.50	1,203.01	601.50	336.84	224.56	2,673.35	561.40	
STA 41+69.30 TO STA 46+97.40	528.10	24.0	1,408.27	3.25	2.25	1.50	633.72	316.86	177.44	118.29	1,301.60	295.74	
I-155 SB TO I-55 SB (R006) 'RDWY F'													
STA 00+93.09 TO STA 37+95.69	3,702.60	24.0	9,873.60	3.25	2.25	1.50	4,443.12	2,221.56	1,244.07	829.38	9,660.27	2,073.46	
I-155 SB TO I-55 NB (R004) 'RAMP D'													
ON RAMP (NO STATION)	387.52	1.0 TO 22.0	495.16	3.25	2.25	1.50	222.82	111.41	62.39	41.59	495.16	103.98	
ON RAMP (NO STATION)	268.21	16.0	476.82	3.25	2.25	1.50	214.57	107.28	60.08	40.05	476.82	100.13	
GORE	-	-	168.81	3.25	2.25	1.50	75.97	37.98	21.27	14.18	168.81	35.45	
STA 00+00.00 TO STA 15+72.88	1,572.88	16.0	2,796.23	3.25	2.25	1.50	1,258.30	629.15	352.33	234.88	2,725.12	587.21	
I-55 SB TO I-155 NB (R005) 'RAMP E'													
STA 00+16.65 TO STA 33+33.53	3,316.88	16.0	5,896.68	3.25	2.25	1.50	2,653.50	1,326.75	742.98	495.32	5,825.56	1,238.30	
GORE	-	-	100.53	3.25	2.25	1.50	45.24	22.62	12.67	8.44	100.53	21.11	
TOTAL:							12,750	6,375	3,570	2,380	27,764	5,950	

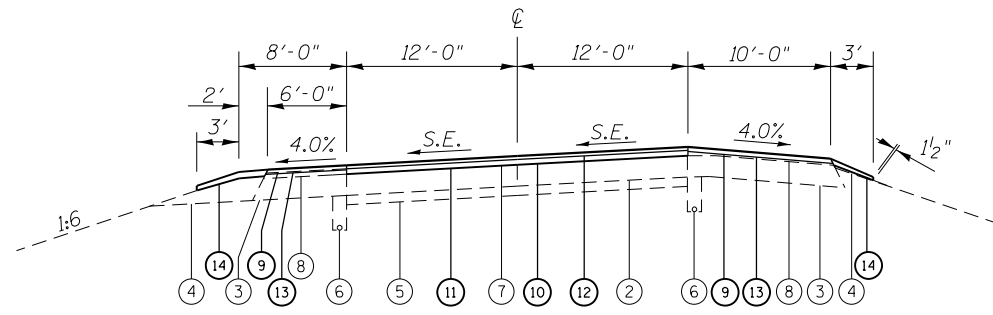
• SUMMARY:

ITEM	QUANTITY
40600285 POLY BIT MATERIALS (PRIME COAT) (POUND)	12,750
MAINLINE (REGULAR COAT)	12,750
MAINLINE (FOG COAT)	6,375
SHOULDER (REGULAR COAT)	7,628
TOTAL:	26,753

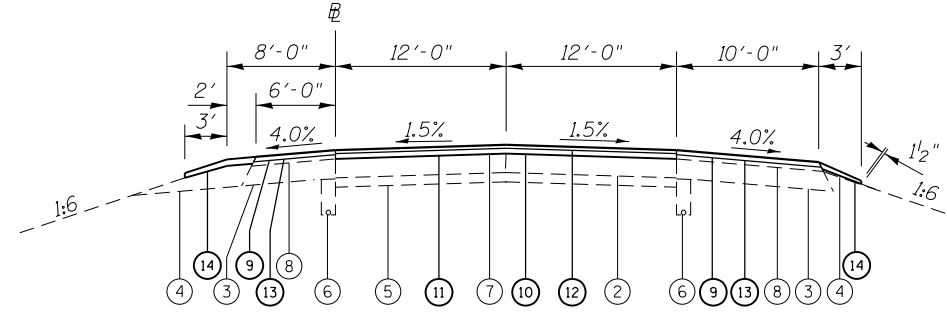
SHOULDER IMPROVEMENTS														
BITUMINOUS MATERIAL (PRIME COAT) RATE - 0.05 LB / SQ FT BITUMINOUS SURFACE / BINDER (112 LBS) RATE - 0.056 T / SY * IN AGGREGATE (SURFACE, BASE, SUBBASE) RATE - 2.05 T / CY							40600285 POLY BIT MATERIALS (PRIME COAT) POUND	48203100 HMA SHOULDERS MIX "C", N50 d = 2" TON	44000155 HMA SURFACE REMOVAL, 1 1/2" SQ YD	48102100 AGG WEDGE SHLD TY, B TON	64200116 SHLD RUMB STRIP, 16 INCH FOOT	X0320157 CLEAN UNDER- DRAIN OUTLETS (THEOR) EACH	X0322279 OUTLET MARKERS (THEOR) EACH	X4820110 HMA SHLD REM & REPL (SPECIAL) (ANTICIPATED) SQ YD
LOCATION	LENGTH	HMA		HMA REM	AGGREGATE									
STATION TO STATION	FOOT	WIDTH FOOT	AREA SQ YD	DEPTH INCH	WIDTH FOOT	DEPTH INCH								
I-55 NB TO I-155 NB (R002, R002A) 'RDWY B'														
STA 17+38.99 TO STA 46+97.40 INSIDE	2,958.41	6.0	1,972.27	1.50	5.0	2.0	887.52	220.89	1,918.94	187.18	2,958.41	6	6	
STA 17+65.16 TO STA 29+64.42 OUTSIDE	1,199.26	10.0	1,332.51	1.50	3.0	2.0	599.63	149.24	1,288.07	45.53	1,199.26	3	3	
GORE	-	-	216.45	1.50	-	-	97.40	24.24	216.45	-	-	-	-	
STA 41+69.31 TO STA 46+97.40 OUTSIDE	528.09	10.0	586.77	1.50	3.0	2.0	264.05	65.72	542.32	20.05	528.09	1	1	
I-55 SB TO I-155 NB (R005) 'RAMP E'														
STA 00+16.65 TO STA 28+83.05 INSIDE	2,866.40	4.0	1,273.96	1.50	5.0	2.0	573.28	142.68	1,256.18	181.36	-	5	5	
STA 00+16.65 TO STA 28+83.05 OUTSIDE	2,866.40	6.0	1,910.93	1.50	5.0	2.0	859.92	214.02	1,884.27	181.36	-	4	4	
STA 28+83.05 TO STA 40+85.24 OUTSIDE	1,202.19	-	1,191.83	1.50	5.0	2.0	536.32	133.49	1,191.83	76.06	-	2	2	
I-155 SB TO I-55 SB (R006) 'RDWY F'														
STA 00+93.09 TO STA 37+95.69 OUTSIDE	3,702.60	10.0	4,114.00	1.50	3.0	2.0	1,851.30	460.77	4,025.11	140.56	3,702.60	6	6	
STA 00+93.09 TO STA 09+57.28 INSIDE	864.19	6.0	576.13	1.50	5.0	2.0	259.26	64.53	549.46	54.68	864.19	2	2	
GORE	75.97	-	107.60	1.50	5.0	2.0	48.42	12.05	107.60	4.81	75.97	-	-	
STA 16+05.21 TO STA 37+95.69 INSIDE	2,190.48	6.0	1,460.32	1.50	5.0	2.0	657.14	163.56	1,433.65	138.60	2,190.48	4	4	
I-155 SB TO I-55 NB (R004) 'RAMP D'														
ON RAMP (NO STATION) OUTSIDE	83.42	-	36.54	1.50	5.0	2.0	16.44	4.09	36.54	5.28	-	-	-	
STA 00+00.00 TO STA 15+56.91 OUTSIDE	1,556.91	4.0	691.96	1.50	5.0	2.0	311.38	77.50	674.18	98.51	-	3	3	
ON RAMP (NO STATION) INSIDE	655.16	-	436.74	1.50	5.0	2.0	196.53	48.91	436.74	41.45	-	-	-	
STA 00+00.00 TO STA 15+63.24 INSIDE	1,563.24	6.0	1,042.16	1.50	5.0	2.0	468.97	116.72	1,015.49	98.91	-	3	3	
TOTAL:							7,628	1,898	16,577	1,274	11,519	39	39	2,543

SEE NOTE

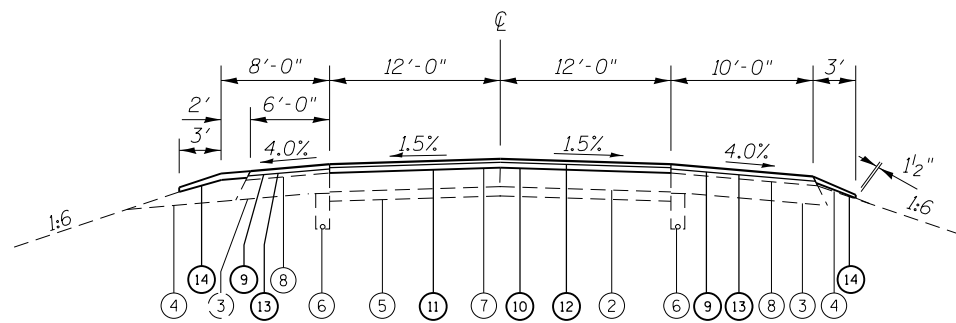
NOTE: QUANTITY FOR PAY ITEM "X4820110 - HMA SHOULDER REMOVAL AND REPLACEMENT (SPECIAL)" IS AN ESTIMATED QUANTITY TO BE USED AT THE DIRECTION OF THE ENGINEER IN THE FIELD.



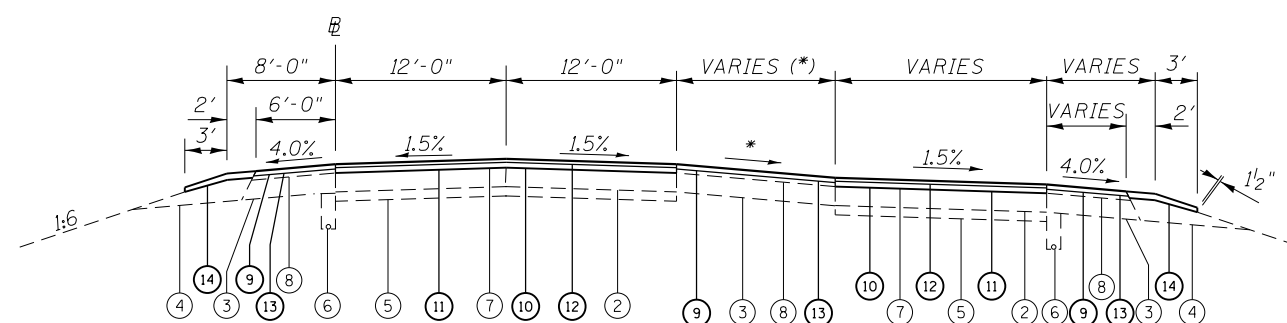
'RDWY B'
STA 17+51.23 TO STA 18+23.90



'RDWY B'
STA 28+00.00 TO STA 29+64.42
STA 41+69.31 TO STA 46+97.40



'RDWY B'
STA 18+23.90 TO STA 28+00.00

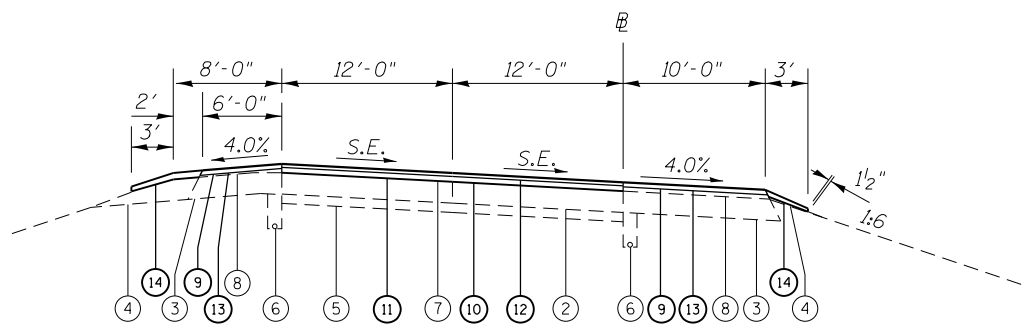


'RDWY B'
STA 29+64.42 TO STA 41+69.31
* SEE ENTRANCE RAMP DETAIL

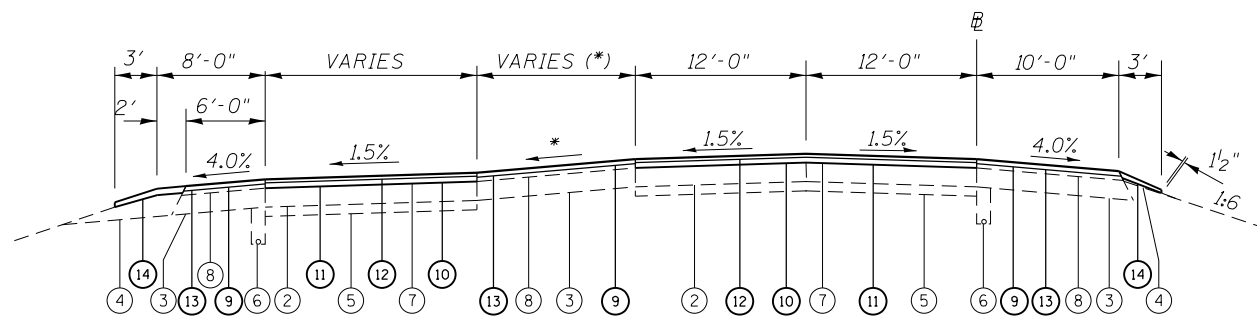
LEGEND

- | | |
|-------------------------------------|--|
| ① EX PCC CONC. PAVEMENT - 8" | ⑧ EX HOT-MIX ASPHALT SHOULDER OVERLAY 3 1/4" |
| ② EX CRC PAVEMENT - 8" | ⑨ PR HOT-MIX ASPHALT SURFACE REMOVAL, 1 1/2" |
| ③ EX HOT-MIX ASPHALT SHOULDER - 8" | ⑩ PR HOT-MIX ASPHALT SURFACE REMOVAL, 3 1/4" |
| ④ EX AGGREGATE SHOULDER | ⑪ PR POLYMERIZED HMA BINDER COURSE, IL-19.0, FG, N90, (2 1/4") |
| ⑤ EX STABILIZED SUBBASE 4" | ⑫ PR POLYMERIZED HMA SURFACE COURSE, MIX "E", N90 (1 1/2") |
| ⑥ EX PIPE UNDERDRAINS | ⑬ PR HOT-MIX ASPHALT SHOULDERS (MIX "C", N50), (2") |
| ⑦ EX HOT-MIX ASPHALT OVERLAY 3 1/4" | ⑭ PR AGGREGATE WEDGE SHOULDERS, TYPE B |

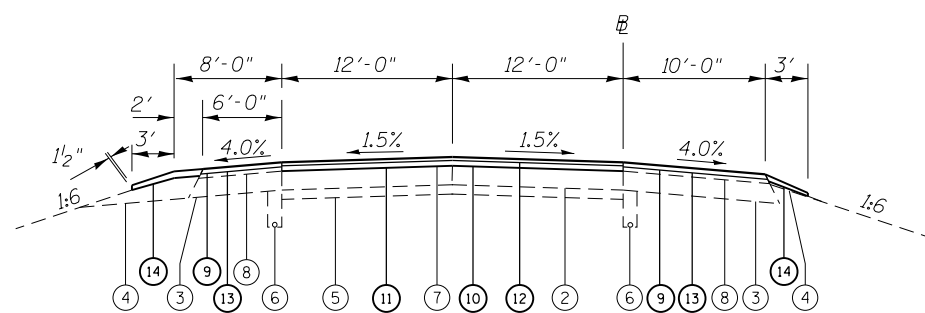
FILE NAME =	USER NAME = Verenskif	DESIGNED -	REVISED -	STATE OF ILLINOIS DEPARTMENT OF TRANSPORTATION	TYPICAL SECTIONS ROADWAY B			F.A.I. RTE.	SECTION	COUNTY	TOTAL SHEETS	SHEET NO.
pw\11084EBIDINTEG.illinois.gov\PIWIDOT\Documents\DOT Offices\District 6\Projects\0672\DRAWING\DATA\6AD\DWG\0672J04-sht-typical		CHECKED -	REVISED -		155	(54-4) RS-5	LOGAN	24	8			
Default		DATE -	REVISED -		SCALE: SHEET 1 OF 3 SHEETS STA. TO STA.			CONTRACT NO. 72J04				
					ILLINOIS FED. AID PROJECT							



'RDWY F'
STA 0+93.09 TO STA 8+24.11



'RDWY F'
STA 9+57.28 TO STA 15+29.24
* SEE EXIT RAMP DETAIL



'RDWY F'
STA 8+24.11 TO STA 9+57.28
STA 15+29.24 TO STA 37+95.69

- ① EX PCC CONC. PAVEMENT - 8"
- ② EX CRC PAVEMENT - 8"
- ③ EX HOT-MIX ASPHALT SHOULDER - 8"
- ④ EX AGGREGATE SHOULDER
- ⑤ EX STABILIZED SUBBASE 4"
- ⑥ EX PIPE UNDERDRAINS
- ⑦ EX HOT-MIX ASPHALT OVERLAY 3 1/4"

LEGEND

- ⑧ EX HOT-MIX ASPHALT SHOULDER OVERLAY 3 1/4"
- ⑨ PR HOT-MIX ASPHALT SURFACE REMOVAL, 1 1/2"
- ⑩ PR HOT-MIX ASPHALT SURFACE REMOVAL, 3 1/4"
- ⑪ PR POLYMERIZED HMA BINDER COURSE, IL-19.0, FG, N90, (2 1/4")
- ⑫ PR POLYMERIZED HMA SURFACE COURSE, MIX "E", N90 (1 1/2")
- ⑬ PR HOT-MIX ASPHALT SHOULDERS (MIX "C", N50), (2")
- ⑭ PR AGGREGATE WEDGE SHOULDERS, TYPE B

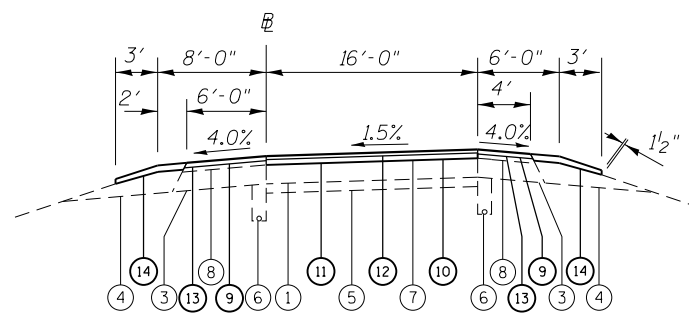
FILE NAME =	USER NAME = Verenskif	DESIGNED -	REVISED -
pw\11084EBIDINTEG.illinois.gov\PIWIDOT\Documents\IDOT Offices\District 6\Projects\0672\DRAWING\DATA\EA0sh\DWG\0672J04-shr-typic1		DRAWN -	REVISED -
Default	PLOT SCALE = 100.0000' / 1in.	CHECKED -	REVISED -
	PLOT DATE = 3/21/2016	DATE -	REVISED -

**STATE OF ILLINOIS
DEPARTMENT OF TRANSPORTATION**

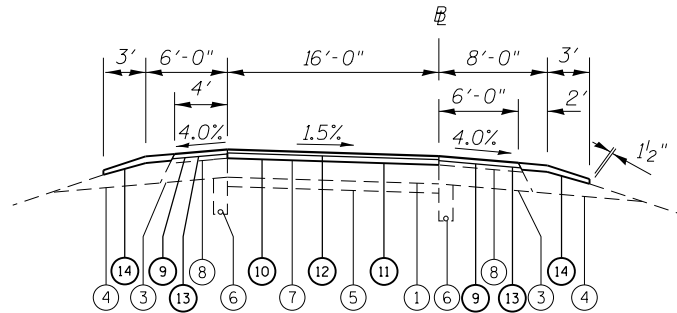
**TYPICAL SECTIONS
ROADWAY F**

SCALE: SHEET 2 OF 3 SHEETS STA. TO STA.

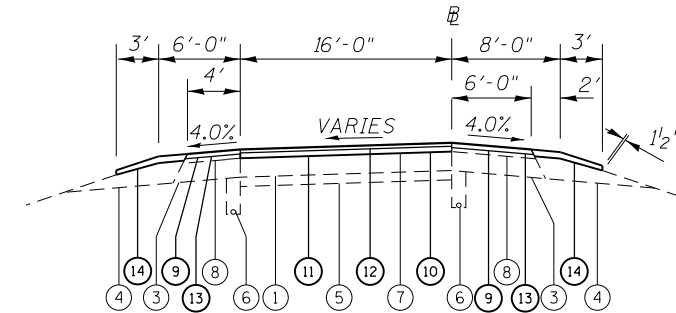
F.A.I. RTE.	SECTION	COUNTY	TOTAL SHEETS	SHEET NO.
155	(54-4) RS-5	LOGAN	24	9
CONTRACT NO. 72J04			ILLINOIS FED. AID PROJECT	



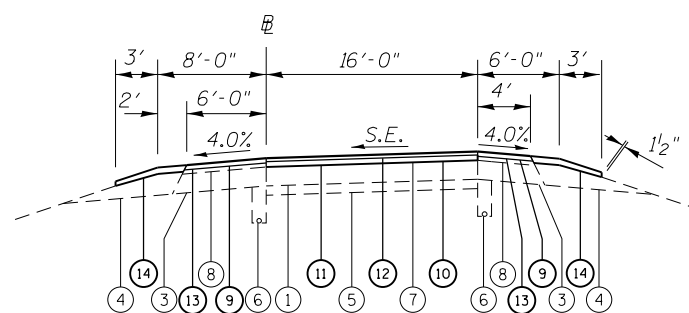
RAMP 'D'
STA 0+00.00 TO STA 6+20.60



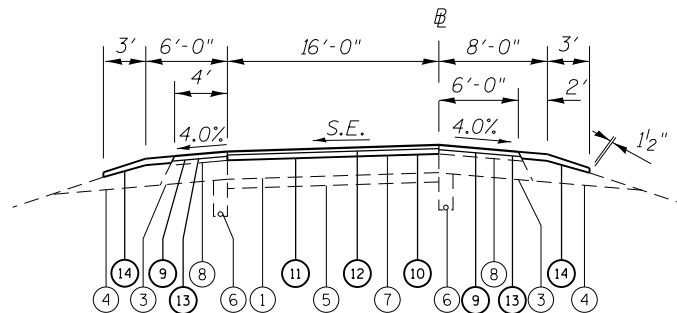
RAMP 'E'
STA 0+16.65 TO STA 7+40.00



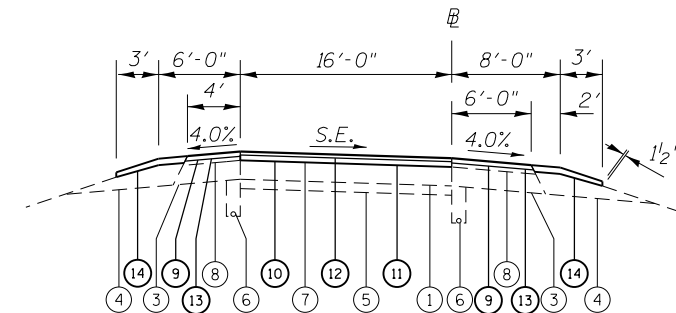
RAMP 'E'
STA 14+57.93 TO STA 16+98.48



RAMP 'D'
STA 6+20.60 TO STA 15+72.88



RAMP 'E'
STA 7+40.00 TO STA 14+57.93



RAMP 'E'
STA 16+98.48 TO STA 28+83.05

LEGEND

- ① EX PCC CONC. PAVEMENT - 8"
- ② EX CRC PAVEMENT - 8"
- ③ EX HOT-MIX ASPHALT SHOULDER - 8"
- ④ EX AGGREGATE SHOULDER
- ⑤ EX STABILIZED SUBBASE 4"
- ⑥ EX PIPE UNDERDRAINS
- ⑦ EX HOT-MIX ASPHALT OVERLAY 3 1/4"
- ⑧ EX HOT-MIX ASPHALT SHOULDER OVERLAY 3 1/4"
- ⑨ PR HOT-MIX ASPHALT SURFACE REMOVAL, 1 1/2"
- ⑩ PR HOT-MIX ASPHALT SURFACE REMOVAL, 3 1/4"
- ⑪ PR POLYMERIZED HMA BINDER COURSE, IL-19.0, FG, N90, (2 1/4")
- ⑫ PR POLYMERIZED HMA SURFACE COURSE, MIX "E", N90 (1 1/2")
- ⑬ PR HOT-MIX ASPHALT SHOULDERS (MIX "C", N50), (2")
- ⑭ PR AGGREGATE WEDGE SHOULDERS, TYPE B

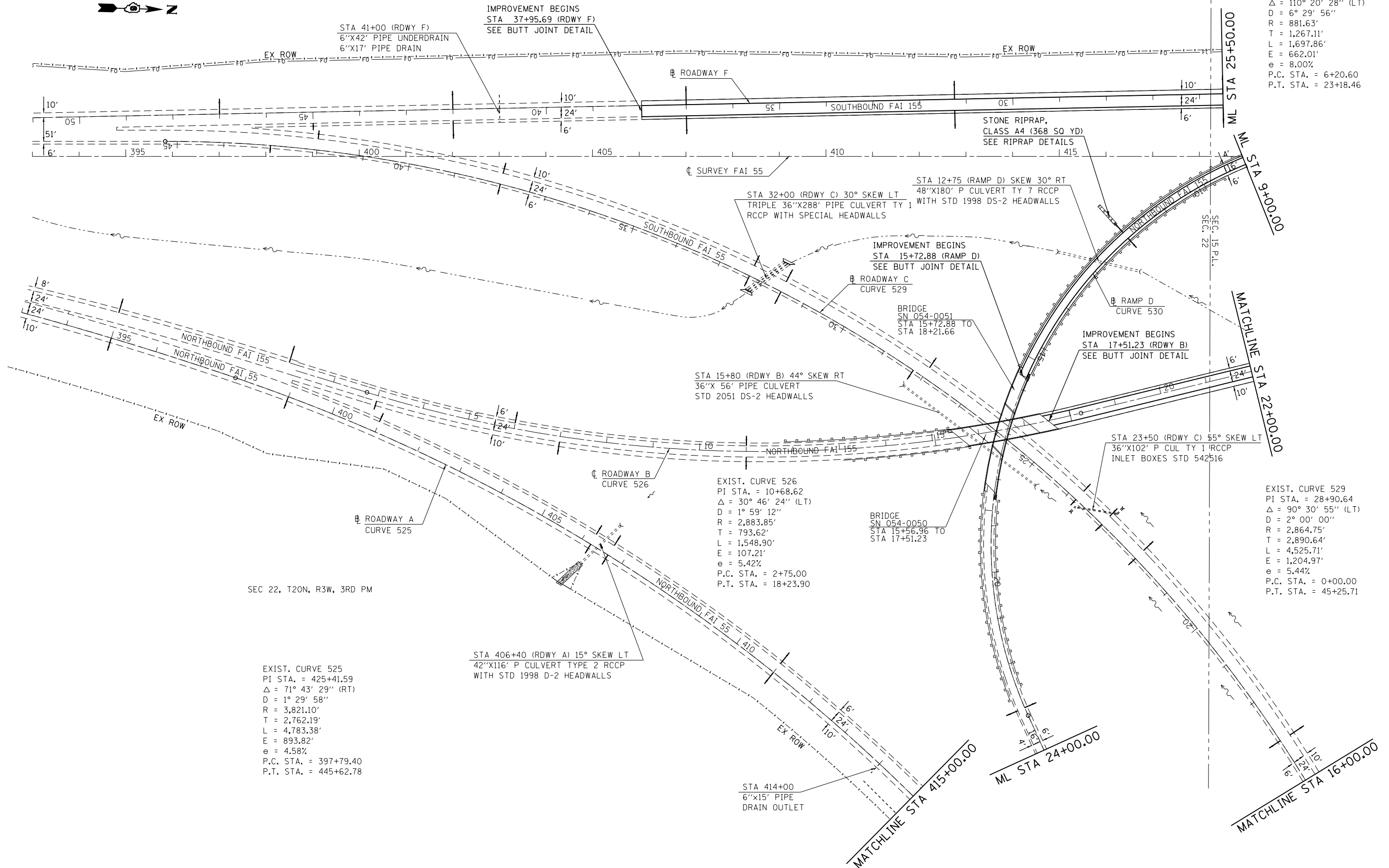
FILE NAME =	USER NAME = Verenskifa	DESIGNED -	REVISED -
pw\11084EBIDINTEG.illinois.gov\PIWIDOT\Documents\DOT Offices\District 6\Projects\0672\DRAWING\DATA\EA0sh\DW\0672J04-shr-typical		CHECKED -	REVISED -
Default	PLOT DATE = 3/21/2016	DATE -	REVISED -

**STATE OF ILLINOIS
DEPARTMENT OF TRANSPORTATION**

TYPICAL SECTIONS RAMPS D & E			
SCALE:	SHEET 3	OF 3 SHEETS	STA. TO STA.

F.A.I. RTE.	SECTION	COUNTY	TOTAL SHEETS	SHEET NO.
155	(54-4) RS-5	LOGAN	24	10
CONTRACT NO. 72J04			ILLINOIS FED. AID PROJECT	

SEC 22, T20N, R3W, 3RD PM



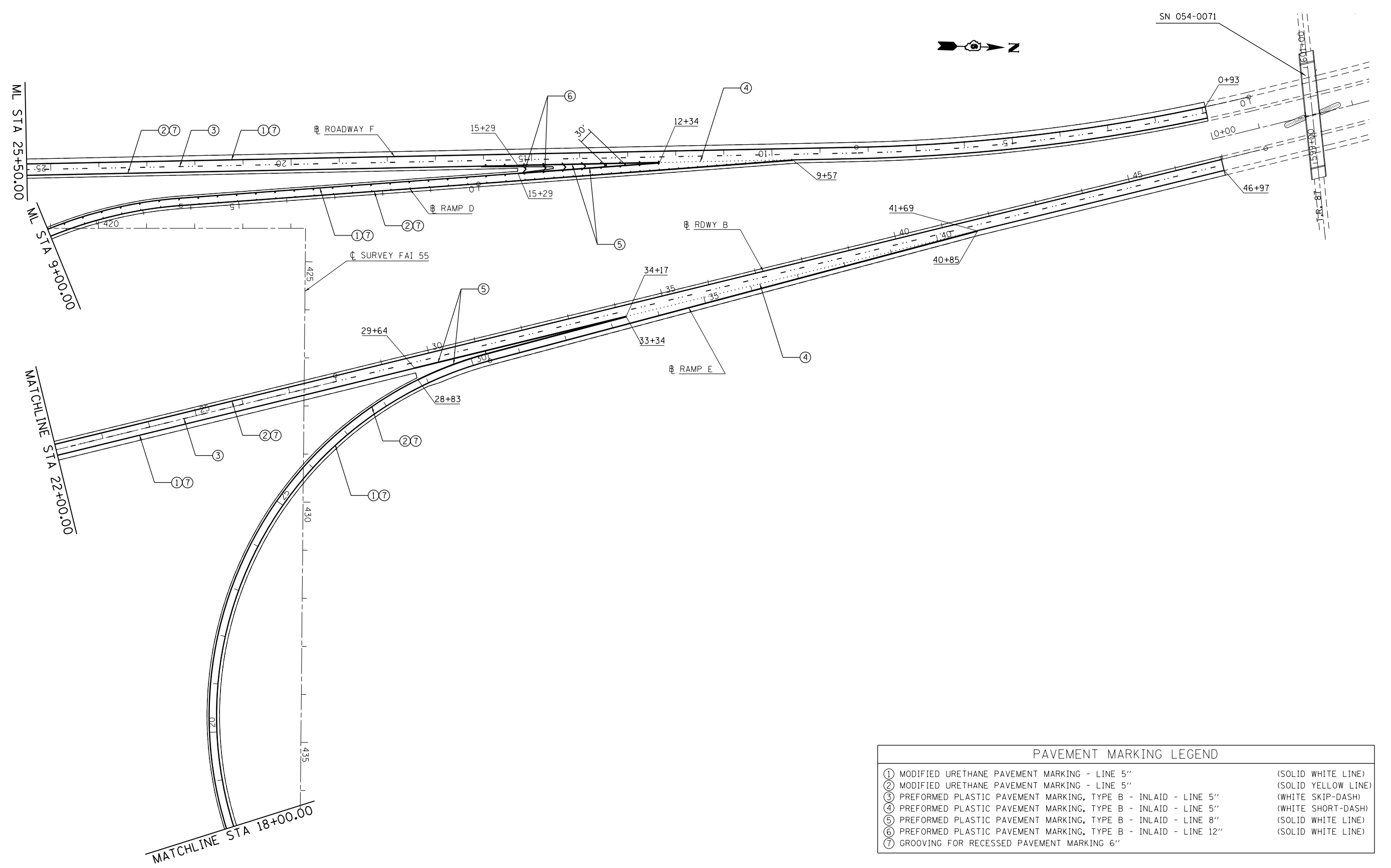
FILE NAME =	USER NAME = Verenskif	DESIGNED -	REVISED -
pw\11084EBIDINTEG.illinois.gov\PI\DOT\Documents\DOT Offices\District 6\Projects\0672\DRAWING\DATA\EA05\DWG\0672J04-sht-plan.dwg		CHECKED -	REVISED -
		DATE -	REVISED -

STATE OF ILLINOIS
DEPARTMENT OF TRANSPORTATION

PLAN SHEET

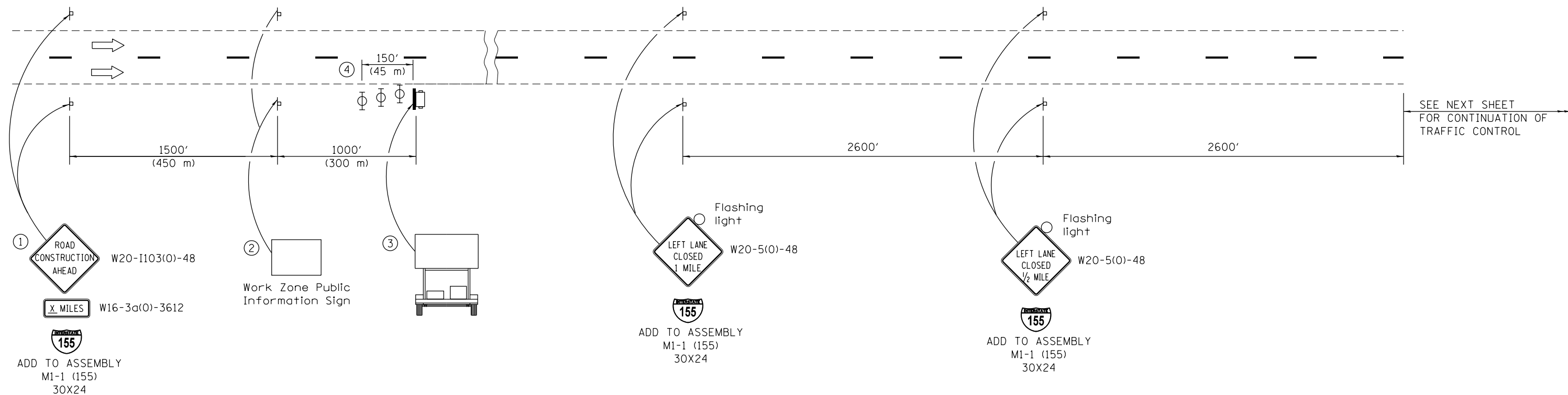
SCALE: 1"=100' SHEET NO. 1 OF 3 SHEETS STA. 37+95.69 TO STA. 25+50.00

F.A.I. RTE.	SECTION	COUNTY	TOTAL SHEETS	SHEET NO.
155	(54-4) RS-5	LOGAN	24	11
CONTRACT NO. 72J04			ILLINOIS FED. AID PROJECT	



PAVEMENT MARKING LEGEND	
①	MODIFIED URETHANE PAVEMENT MARKING - LINE 5" (SOLID WHITE LINE)
②	MODIFIED URETHANE PAVEMENT MARKING - LINE 5" (SOLID YELLOW LINE)
③	PREFORMED PLASTIC PAVEMENT MARKING, TYPE B - INLAID - LINE 5" (WHITE SKIP-DASH)
④	PREFORMED PLASTIC PAVEMENT MARKING, TYPE B - INLAID - LINE 5" (WHITE SHORT-DASH)
⑤	PREFORMED PLASTIC PAVEMENT MARKING, TYPE B - INLAID - LINE 8" (SOLID WHITE LINE)
⑥	PREFORMED PLASTIC PAVEMENT MARKING, TYPE B - INLAID - LINE 12" (SOLID WHITE LINE)
⑦	GROOVING FOR RECESSED PAVEMENT MARKING 6"

FILE NAME =	USER NAME = Verenskifa	DESIGNED -	REVISED -	STATE OF ILLINOIS DEPARTMENT OF TRANSPORTATION	PAVEMENT MARKING PLAN SHEET			F.A.I. RTE.	SECTION	COUNTY	TOTAL SHEETS	SHEET NO.		
pw\ill084EBIDINTEG.illinois.gov\PIWIDOT\Documents\IDOT Offices\District 6\Projects\D672J04\Drawings\EA084EBID\672J04-sht-pmk.dwg		CHECKED -	REVISED -		155	(54-4) RS-5	LOGAN	24	16					
PLOT SCALE = 200.0000' / in.		DATE -	REVISED -		SCALE: 1"=100'			SHEET NO. 3 OF 3 SHEETS			STA. 25+50.00 TO STA. 00+93.09		CONTRACT NO. 72J04	
PLOT DATE = 3/21/2016					ILLINOIS FED. AID PROJECT									



SYMBOLS

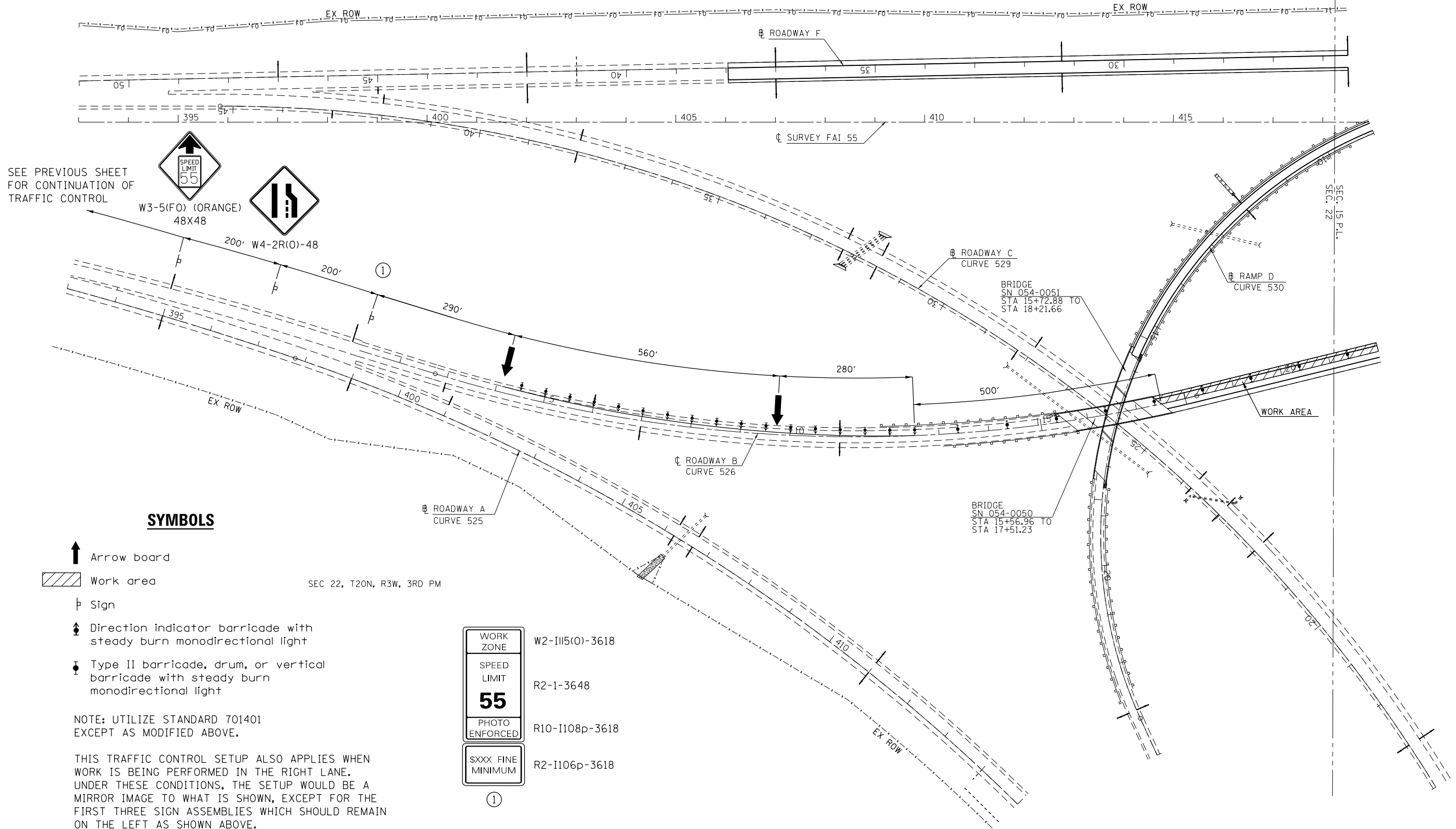
- Portable changeable message sign
- Sign
- Type II barricade, drum, or vertical barricade with monodirectional flashing light

- ① The Road Construction Ahead sign shall be located 3 to 5 miles in advance of the project limits.
- ② The message and size of the Work Zone Public Information Sign shall be as specified by the Department.
- ③ The message board shall be used to display status of lanes within the project. The primary messages shall be:
 "Right Lane Closed" / "I-155 x Miles Ahead"
 "Left Lane Closed" / "I-155 x Miles Ahead"
 "All Lanes Open"
- ④ Three, Type II barricades, drums, or vertical barricades at 50' (15 m) centers.

NOTE: THIS TRAFFIC CONTROL SETUP SHALL ONLY BE USED FOR THE WORK ON NB I-155

WHEN THE RIGHT LANE IS CLOSED, RIGHT LANE CLOSED SIGNS SHALL BE SUBSTITUTED FOR THE LEFT LANE CLOSED SIGNS.

FILE NAME =	USER NAME = Verenskifa	DESIGNED -	REVISED -	STATE OF ILLINOIS DEPARTMENT OF TRANSPORTATION	MODIFIED TRAFFIC CONTROL AND PROTECTION STANDARD 701400	F.A.I. RTE.	SECTION	COUNTY	TOTAL SHEETS	SHEET NO.
pw:\IL\084EBIDINTEG\illinois.gov\PWIDOT\Documents\IDOT Offices\District 6\Projects\0672\Drawings\DWG\0672\0672J04-sht-staging\REVISED -	PLotted Date: 3/21/2016	CHECKED -	REVISED -			155	(54-4) RS-5	LOGAN	24	17
Default	PLOT SCALE = 200.0000' / in.	DATE -	REVISED -			CONTRACT NO. 72J04				
	PLOT DATE = 3/21/2016					SCALE: 1"=100'		SHEET 1 OF 1 SHEETS		STA. TO STA.



SYMBOLS

- Arrow board
- Work area
- Sign
- Direction indicator barricade with steady burn monodirectional light
- Type II barricade, drum, or vertical barricade with steady burn monodirectional light

NOTE: UTILIZE STANDARD 701401 EXCEPT AS MODIFIED ABOVE.

THIS TRAFFIC CONTROL SETUP ALSO APPLIES WHEN WORK IS BEING PERFORMED IN THE RIGHT LANE. UNDER THESE CONDITIONS, THE SETUP WOULD BE A MIRROR IMAGE TO WHAT IS SHOWN, EXCEPT FOR THE FIRST THREE SIGN ASSEMBLIES WHICH SHOULD REMAIN ON THE LEFT AS SHOWN ABOVE.

WORK ZONE	W2-III5(O)-3618
SPEED LIMIT	R2-1-3648
55	
PHOTO ENFORCED	R10-I108p-3618
SXXX FINE MINIMUM	R2-I106p-3618

①

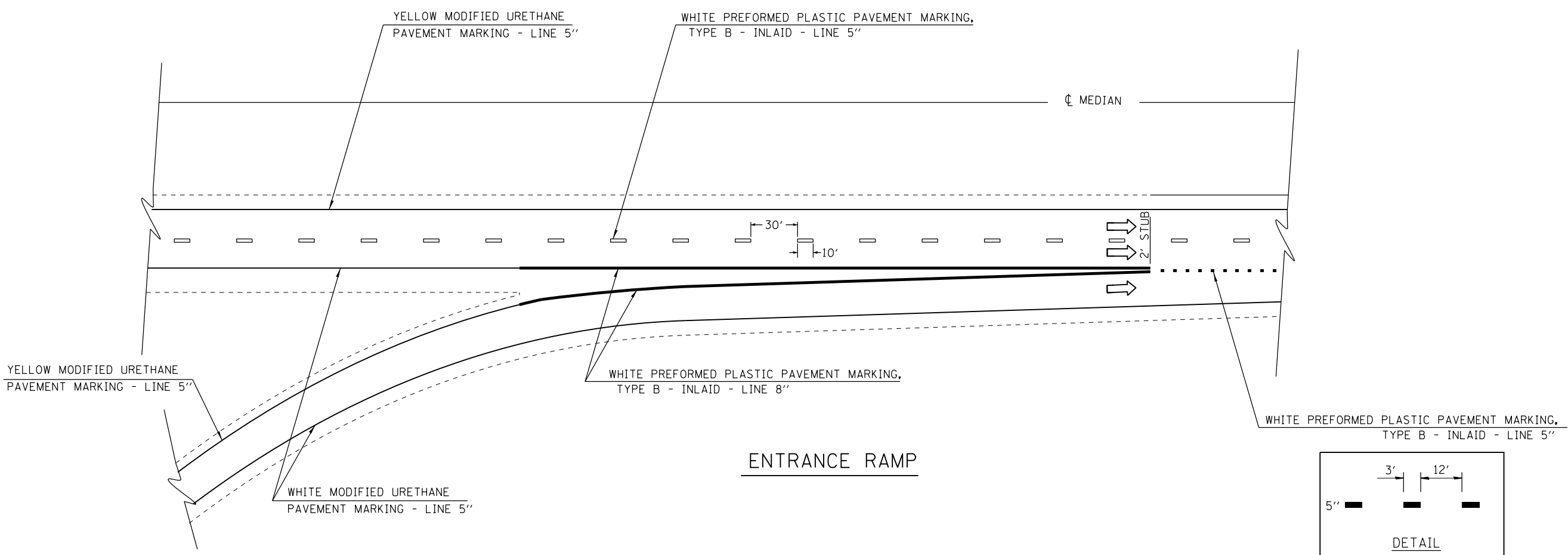
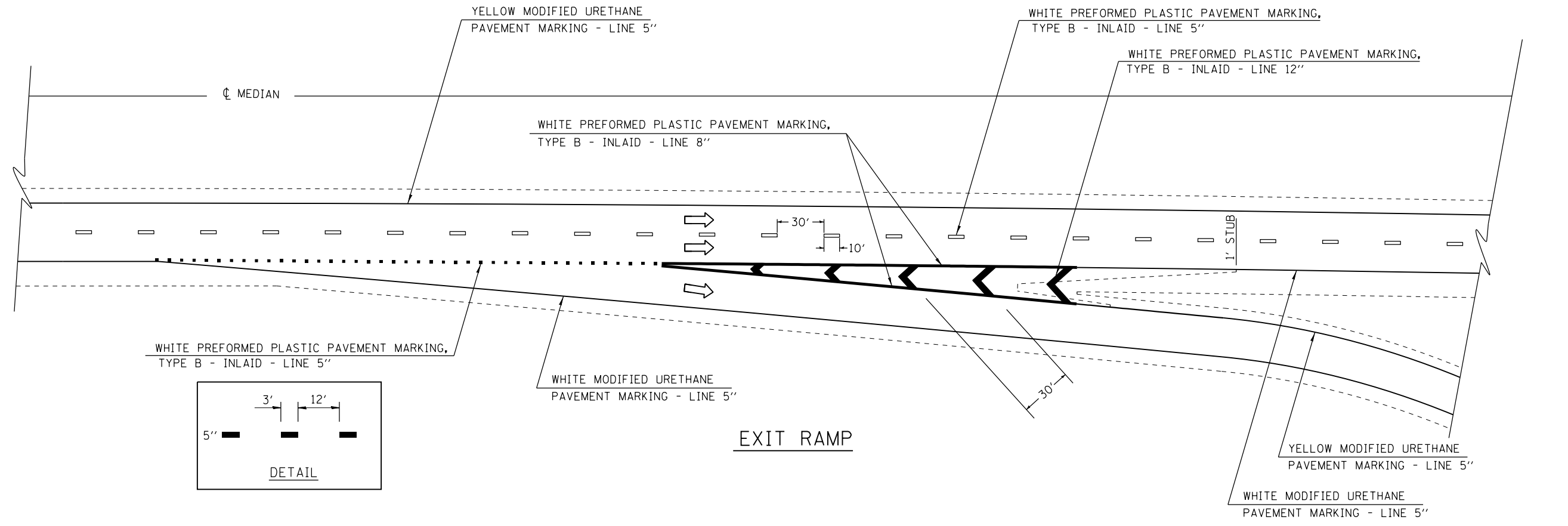
FILE NAME =	USER NAME = Verenskif	DESIGNED -	REVISED -
pw\11084EBIDINTEG.illinois.gov\PI\DOT\Documents\DOT Offices\District 6\Projects\0672\DRAWING\0672\04-sht-staging\REVISED -		CHECKED -	REVISED -
PLOT SCALE = 200.0000' / in.		DATE -	REVISED -
PLOT DATE = 3/21/2016			

**STATE OF ILLINOIS
DEPARTMENT OF TRANSPORTATION**

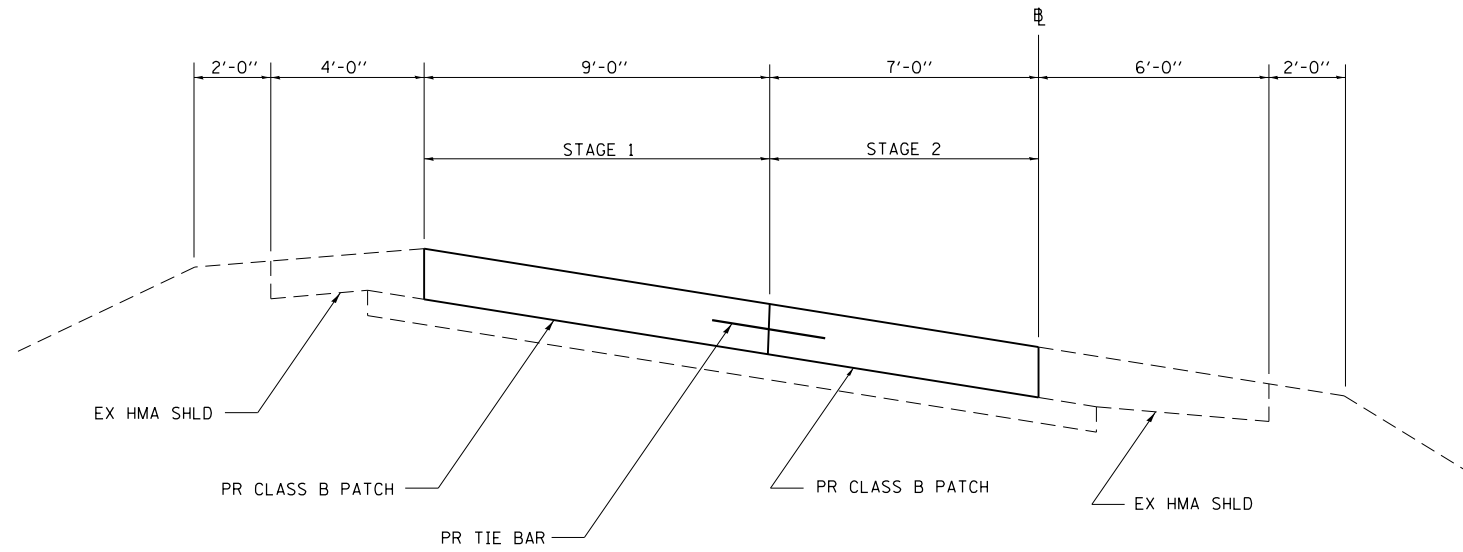
**MODIFIED TRAFFIC CONTROL
AND PROTECTION STANDARD 701401**

SCALE: 1"=100' SHEET NO. 1 OF 1 SHEETS STA. TO STA.

F.A.I. RTE.	SECTION	COUNTY	TOTAL SHEETS	SHEET NO.
155	(54-4) RS-5	LOGAN	24	18
CONTRACT NO. 72J04			ILLINOIS FED. AID PROJECT	



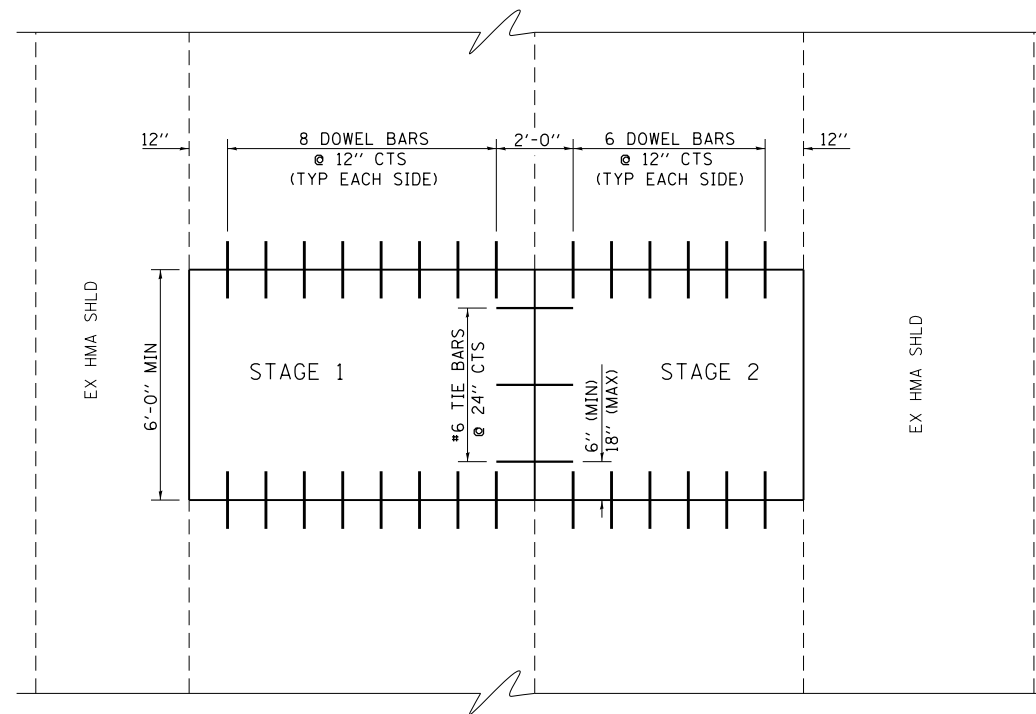
FILE NAME =	USER NAME = Verenskif	DESIGNED -	REVISED -	STATE OF ILLINOIS DEPARTMENT OF TRANSPORTATION	TYPICAL PAVEMENT MARKING DETAIL			F.A.I. RTE.	SECTION	COUNTY	TOTAL SHEETS	SHEET NO.	
p:\IL\084EBIDINTEG\illinois.gov\PIWIDOT\Documents\IDOT Offices\District 6\Projects\0672\DRAWING\EA0\Sheets\0672J04-sht-det		CHECKED -	REVISED -		SCALE:	SHEET NO. 1 OF 1 SHEETS	STA.	TO STA.	155	(54-4) RS-5	LOGAN	24	19
		DATE -	REVISED -		CONTRACT NO. 72J04								
					ILLINOIS FED. AID PROJECT								



NOTE:

1. THIS DETAIL IS TO BE USED IN CONJUNCTION WITH STANDARD 442101.
2. TIE BARS SHALL BE NO. 6 DEFORMED BARS AT 24" CENTERS WHICH SHALL BE DRILLED AND GROUTED ACCORDING TO ARTICLE 420.05(b) OF THE STANDARD SPECIFICATIONS.
3. THE CLASS A PATCH ON RAMP E SHALL BE CONSTRUCTED AS A SINGLE PATCH UTILIZING APPLICATION NO. 1 AS SHOWN ON TRAFFIC CONTROL STANDARD 701411.

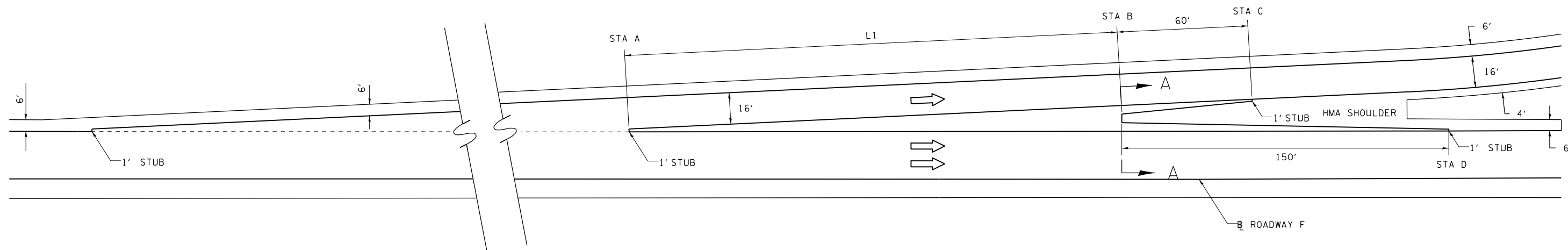
TYPICAL SECTION - CLASS B PATCH ON RAMPS



PLAN - CLASS B PATCH ON RAMPS

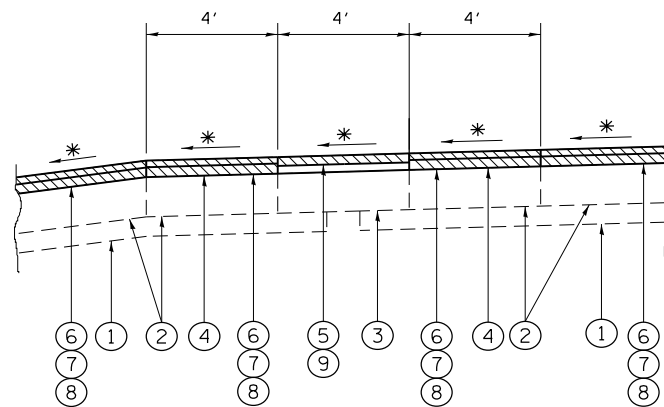
FILE NAME =	USER NAME = Verenskif	DESIGNED -	REVISED -	STATE OF ILLINOIS DEPARTMENT OF TRANSPORTATION	CLASS B PATCHING RAMP DETAIL	F.A.I. RTE.	SECTION	COUNTY	TOTAL SHEETS	SHEET NO.
pw:\11\084EBIDINTEG\illinois.gov\PWIDOT\Documents\IDOT_Offices\District_6\Projects\06722\DRAWINGData\EADsheets\06722\04-sht-detail.dwg	PLLOT SCALE = 100.0000' / 1" =	CHECKED -	REVISED -			155	(54-4) RS-5	LOGAN	24	20
	PLOT DATE = 3/21/2016	DATE -	REVISED -			CONTRACT NO. 72J04		ILLINOIS FED. AID PROJECT		

SCALE: SHEET NO. 1 OF 1 SHEETS STA. TO STA.



PLAN - EXIT TERMINAL

INTERCHANGE	RAMP	ADJACENT MAINLINE	STA A		STA B		STA C	STA D	L1
			RAMP	MAINLINE	RAMP	MAINLINE	MAINLINE	MAINLINE	(FEET)
I-55/I-155	D	ROADWAY F	N/A	12+34	N/A	14+55	15+15	16+05	221

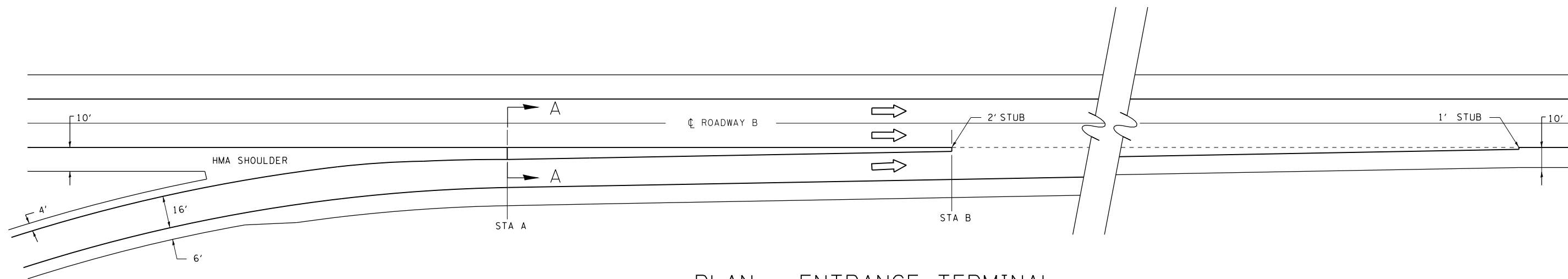


SECTION A-A
RAMP D

LEGEND

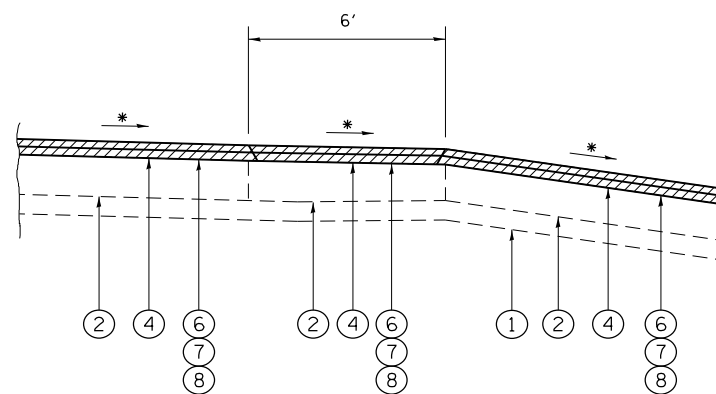
- 1 EX STABILIZED SUB-BASE
- 2 EX PCC PAVEMENT
- 3 EX HOT-MIX ASPHALT SHOULDER
- 4 EX HOT-MIX ASPHALT
- 5 PR HOT-MIX ASPHALT SURFACE REMOVAL 1 1/2"
- 6 PR HOT-MIX ASPHALT SURFACE REMOVAL 3 1/4"
- 7 PR POLYMERIZED HOT-MIX ASPHALT BINDER COURSE, IL-19.0, FG, N90 2 1/4"
- 8 PR POLYMERIZED HOT-MIX ASPHALT SURFACE COURSE, MIX "E", N90 1 1/2"
- 9 PR HOT-MIX ASPHALT SURFACE COURSE, MIX C, N50 2"

* MATCH EXISTING SLOPE



PLAN - ENTRANCE TERMINAL

INTERCHANGE	RAMP	ADJACENT MAINLINE	STA A		STA B	
			RAMP	MAINLINE	RAMP	MAINLINE
I-55/I-155	E	ROADWAY B	30+32	31+16	33+34	34+17

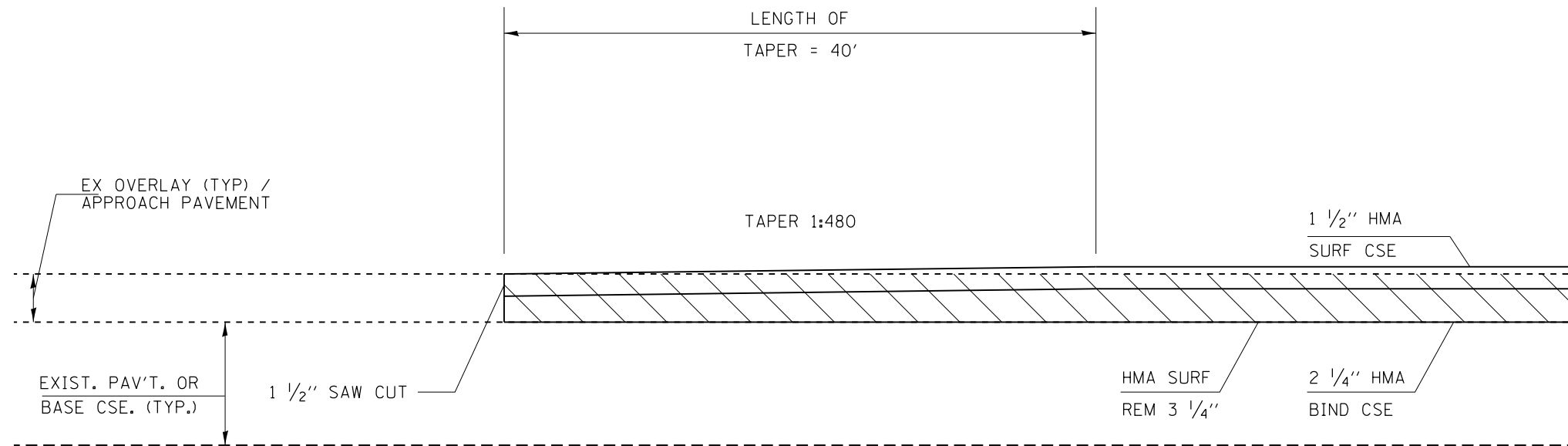


SECTION A-A
RAMP E

LEGEND

- 1 EX STABILIZED SUB-BASE
- 2 EX PCC PAVEMENT
- 3 EX HOT-MIX ASPHALT SHOULDER
- 4 EX HOT-MIX ASPHALT
- 5 PR HOT-MIX ASPHALT SURFACE REMOVAL 1 1/2"
- 6 PR HOT-MIX ASPHALT SURFACE REMOVAL 3 1/4"
- 7 PR POLYMERIZED HOT-MIX ASPHALT BINDER COURSE, IL-19.0, FG, N90 2 1/4"
- 8 PR POLYMERIZED HOT-MIX ASPHALT SURFACE COURSE, MIX "E", N90 1 1/2"
- 9 PR HOT-MIX ASPHALT SURFACE COURSE, MIX C, N50 2"

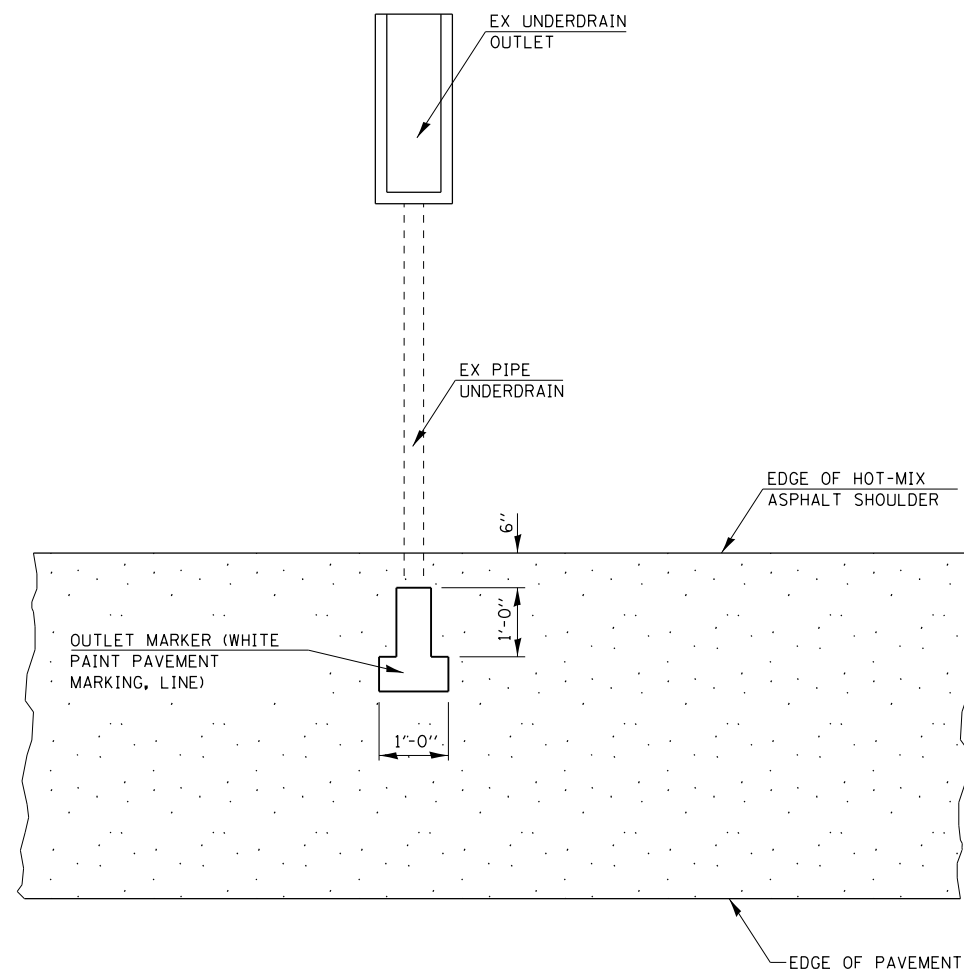
* MATCH EXISTING SLOPE



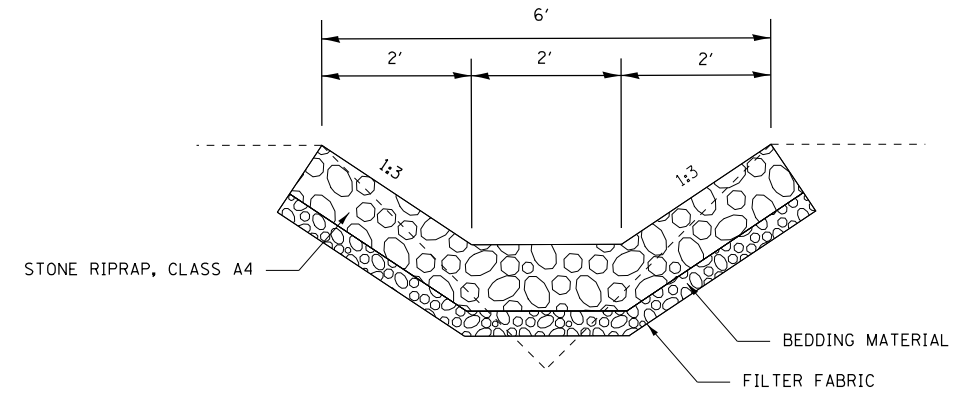
BUTT JOINT DETAIL (A)

- RDWY F STA 00+93.09
- RDWY F STA 37+95.69
- RDWY B STA 17+51.23
- RDWY B STA 46+97.40
- RAMP D STA 15+72.88
- RAMP E STA 00+16.65

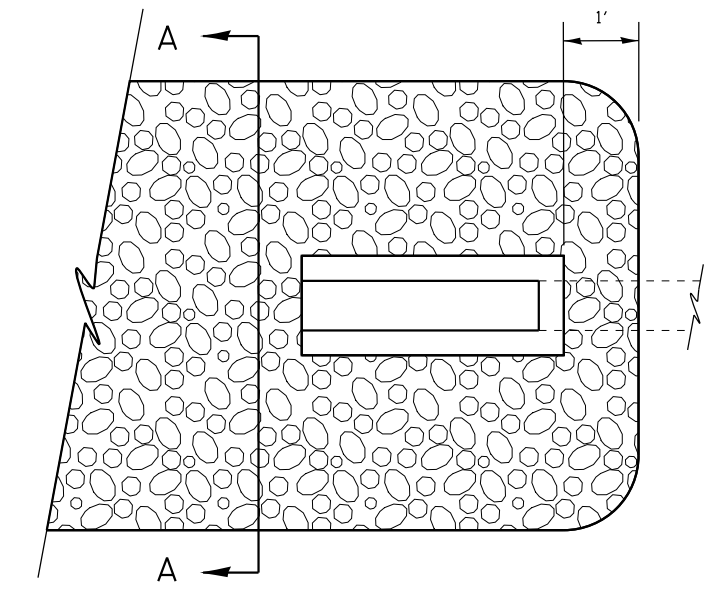
FILE NAME =	USER NAME = Verenskif	DESIGNED -	REVISED -	STATE OF ILLINOIS DEPARTMENT OF TRANSPORTATION	BUTT JOINT AND TRANSITION DETAIL			F.A.I. RTE.	SECTION	COUNTY	TOTAL SHEETS	SHEET NO.
p:\11\084EBIDINTEG.illinois.gov\PWIDOT\Documents\DOT Offices\District 6\Projects\0672\Drawings\EA0\Sheets\0672J04-sht-det	DRAWN	REVISION	REVISION		155	(54-4) RS-5	LOGAN	24	23			
PLOT SCALE = 100.0000' / in.	CHECKED -	REVISION	REVISION		CONTRACT NO. 72J04							
PLOT DATE = 3/21/2016	DATE -	REVISION	REVISION		SCALE:	SHEET NO. 1 OF 1 SHEETS	STA.	TO STA.	ILLINOIS FED. AID PROJECT			



PLAN FOR UNDERDRAIN OUTLET MARKER



SECTION A-A



PLAN VIEW AT OUTLET

RIPRAP DETAILS

NOTE: RIPRAP LAYOUT AS SHOWN ON THE PLANS AND AS DETAILS ABOVE MAY BE VARIED IN THE FIELD TO SUIT GROUND CONDITIONS AS DIRECTED BY THE ENGINEER.

FILE NAME =	USER NAME = Verenskif	DESIGNED -	REVISED -
pw\11084EBIDINTEG.illinois.gov\PIWIDOT\Documents\DOT Offices\District 6\Projects\0672J04\Drawings\0672J04-sht-details		DRAWN -	REVISED -
	PLOT SCALE = 100.0000' / 1" =	CHECKED -	REVISED -
	PLOT DATE = 3/21/2016	DATE -	REVISED -

STATE OF ILLINOIS
DEPARTMENT OF TRANSPORTATION

UNDERDRAIN OUTLET MARKER & RIPRAP DETAILS

SCALE: SHEET NO. 1 OF 1 SHEETS STA. TO STA.

F.A.I. RTE.	SECTION	COUNTY	TOTAL SHEETS	SHEET NO.
155	(54-4) RS-5	LOGAN	24	24
ILLINOIS FED. AID PROJECT			CONTRACT NO. 72J04	