

06-10-2016 LETTING ITEM 150

STATE OF ILLINOIS
DEPARTMENT OF TRANSPORTATION
DIVISION OF HIGHWAYS

**PROPOSED
HIGHWAY PLANS**

VARIOUS ROUTES
SECTION D9 BRIDGE PAINT 2016-1

WILLIAMSON AND WHITE COUNTIES

F.A. R.T.E.	SECTION	COUNTY	TOTAL SHEETS	SHEET NO.
VAR.	D9 BRIDGE PAINT 2016-1	ILLINOIS	VARIOUS	15
			CONTRACT NO.	78511

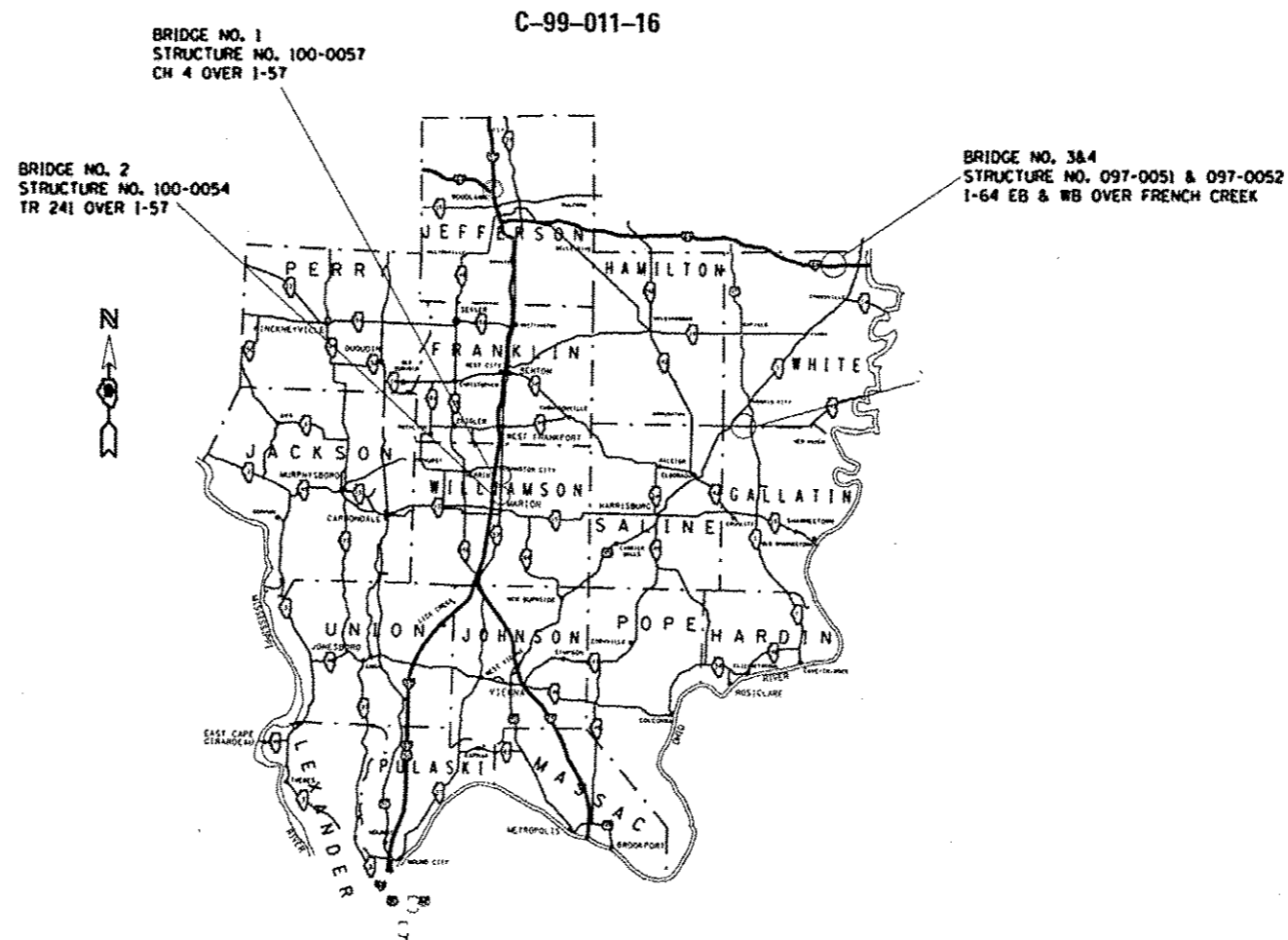
FOR INDEX OF SHEETS, SEE SHEET NO. 2

BRIDGE NO. 1
SNL 100-0057
CH 4 2011 ADT=3250, 2% TRUCKS
I-57 2014 ONE WAY ADT=15250, 24% TRUCKS
ROAD DIST - CO UNIT

BRIDGE NO. 2
SNL 100-0054
TR 241 2011 ADT=1900, 2% TRUCKS
I-57 2014 ONE WAY ADT=15250, 24% TRUCKS
ROAD DIST - CO UNIT

BRIDGE NO. 3
SNL 097-0051
I-64 WB 2014 ONE WAY ADT=5100, 43% TRUCKS
TOWNSHIP-GRAY

BRIDGE NO. 4
SNL 097-0052
I-64 EB 2014 ONE WAY ADT= 5100, 38% TRUCKS
TOWNSHIP-GRAY



J.U.L.I.E.
JOINT UTILITY LOCATION INFORMATION FOR EXCAVATION
1-800-892-0123
OR 811

PROJECT ENGINEER: DAVID PICHE (618) 351-5227
DESIGN ENGINEER: AIMAN FAREA

CONTRACT NO. 78511

STATE OF ILLINOIS
DEPARTMENT OF TRANSPORTATION
DIVISION OF HIGHWAYS

SUBMITTED Dec 8 20 15
Jeffrey Keen
DEPUTY DIRECTOR OF HIGHWAYS, REGION ENGINEER

May 6 20 16
Matthew M. Adair, PE
ENGINEER OF DESIGN AND ENVIRONMENT

May 6 20 16
Oliver Osman, PE
DIRECTOR OF HIGHWAYS, CHIEF ENGINEER

PRINTED BY THE AUTHORITY
OF THE STATE OF ILLINOIS

INDEX OF SHEETS

SHEET NO.	DESCRIPTION
1	COVER SHEET
2	INDEX OF SHEETS, HIGHWAY STANDARDS, GENERAL NOTES
3, 4	SUMMARY OF QUANTITIES
5-9	PORTABLE TEMPORARY BARRIER SYSTEM
10-11	SN 100-0057 STRUCTURE INFORMATION
12-13	SN 100-0054 STRUCTURE INFORMATION
14-15	SN 097-0051 & SN 097-0052 STRUCTURE INFORMATION

STANDARDS

- 701101-05 OFF-RD OPERATIONS, MULTILANE, 15' (4.5 m) TO 24" (600mm) FROM PAVEMENT EDGE
- 701106-02 OFF-RD OPERATIONS, MULTILANE, MORE THAN 15' (4.5 m) AWAY
- 701400-08 APPROACH TO LANE CLOSURE, FREEWAY/EXPRESSWAY
- 701406-10 LANE CLOSURE, FREEWAY/EXPRESSWAY, DAY OPERATIONS ONLY
- 701428-01 TRAFFIC CONTROL SETUP AND REMOVAL FREEWAY/EXPRESSWAY
- 701901-05 TRAFFIC CONTROL DEVICES
- 701201-04
- 701402-11

AREAS OF CLEANING & PAINTING

SN/ AREAS OF CLEANING & PAINTING	ALL STEEL WITHIN 5' OF EXP. JOINTS	INSIDE, OUTSIDE & BOTTOM OF FASCIA BEAMS	ALL STRUCTURAL STEEL
100-0057			X
100-0054			X
097-0051			X
097-0052			X

GENERAL NOTES

ADDITIONAL TRAFFIC CONTROL DEVICES MAY BE REQUIRED TO CHANNEL TRAFFIC AT COMMERCIAL AND/OR PRIVATE ENTRANCE AS DIRECTED BY THE ENGINEER. ALL TRAFFIC CONTROL DEVICES ARE INCLUDED IN THE COST OF THE TRAFFIC CONTROL AND PROTECTION STANDARD USED AT THE SITE, AND WILL NOT BE PAID FOR SEPARATELY.

THE EXISTING STEEL COATINGS CONTAIN LEAD. THE CONTRACTOR SHOULD TAKE APPROPRIATE PRECAUTIONS TO DEAL WITH THE PRESENCE OF LEAD ON THIS PROJECT.

THE CONTRACTOR IS REQUIRED TO BE SSPC OP1 AND SSPC OP2 CERTIFIED.

PLAN DIMENSIONS AND DETAILS RELATIVE TO EXISTING PLANS ARE SUBJECT TO ROUTINE VARIATIONS. THE CONTRACTOR SHALL FIELD VERIFY EXISTING DIMENSIONS AND DETAILS AFFECTING NEW CONSTRUCTION AND MAKE NECESSARY APPROVED ADJUSTMENTS PRIOR TO CONSTRUCTION OR ORDERING OF MATERIALS. SUCH VARIATIONS SHALL NOT BE CAUSE FOR ADDITIONAL COMPENSATION FOR A CHANGE IN SCOPE OF THE WORK. HOWEVER, THE CONTRACTOR WILL BE PAID FOR THE QUANTITY ACTUALLY FURNISHED AT THE UNIT PRICE BID FOR THE WORK.

TRAFFIC CONTROL SIGNS SHALL BE PLACED SO THAT THEY DO NOT INTERFERE WITH EXISTING SIGNS OR FLASHING BEACONS. THE DIMENSIONS BETWEEN SIGNS MAY BE MODIFIED SLIGHTLY SO AS TO AVOID CONFLICTS WITH EXISTING SIDE ROADS, COMMERCIAL ENTRANCES, AND PRIVATE ENTRANCES. THE BUREAU OF OPERATIONS SHOULD APPROVE FINAL PLACEMENT OF TRAFFIC CONTROL SIGNING.

IN ADDITION TO THE REQUIREMENTS OF ARTICLE 107.16 THE CONTRACTOR SHALL PROTECT THE SURFACE OF ALL BRIDGE DECKS AND BRIDGE APPROACH PAVEMENTS IN A MANNER SATISFACTORY TO THE ENGINEER BEFORE ANY EQUIPMENT IS ALLOWED TO CROSS THE STRUCTURE. PROTECTION SHALL BE PROVIDED FOR ALL EQUIPMENT AS DEFINED IN ARTICLE 101.16 REGARDLESS IF TRACK MOUNTED OR WHEELED.

THE QUANTITY FOR RELOCATE PORTABLE TEMPORARY BARRIER SYSTEM IS BASED ON RELOCATING THE BARRIER THREE TIMES AT EACH STRUCTURE WHERE THEY ARE NEEDED. ANY PAYMENT FOR ADDITIONAL RELOCATION WILL BE MADE ACCORDING TO ARTICLE 104.02 OF THE STANDARD SPECIFICATION.

FOR STRUCTURES 100-0057, 100-0054, 097-0051, AND 097-0052 CLEANING AND PAINTING OF EXISTING STRUCTURAL STEEL SHALL BE AS SPECIFIED IN THE SPECIAL PROVISIONS FOR "CLEANING AND PAINTING EXISTING STEEL STRUCTURES" AND "CONTAINMENT AND DISPOSAL OF LEAD PAINT CLEANING RESIDUES." ALL STEEL, AS SPECIFIED IN THE PLANS, SHALL BE CLEANED PER NEAR WHITE BLAST CLEANING- SSPC-SP10 AND PAINTED ACCORDING TO THE REQUIREMENTS OF PAINT SYSTEM 1 - OZ/E/U. THE COLOR OF THE FINAL FINISH COAT FOR THE BEAMS SHALL BE REDDISH BROWN, MUNSSELL NO. 2.5YR 3/4 FOR STRUCTURES 100-0057 & 100-0054 AND INTERSTATE GREEN, MUNSSELL NO. 7.5G 4/8 FOR STRUCTURES 097-0051 & 097-0052.

A TOTAL OF SEVEN AIR MONITORS ARE REQUIRED TO MONITOR ABRASIVE BLASTING OPERATIONS AT THREE LOCATIONS, 3 AT BRIDGE NO. 2 (SN 100-0054), 2 AT BRIDGE NO. 3 (SN 097-0051), AND 2 AT BRIDGE NO. 4 (SN 097-0052). ACCORDING TO SPECIAL PROVISION "CONTAINMENT AND DISPOSAL OF LEAD PAINT CLEANING RESIDUES."

REV.

Prepared By:	<i>[Signature]</i> DISTRICT STUDIES & PLANS ENGINEER
Examined By:	<i>[Signature]</i> DISTRICT LAND ACQUISITION ENGINEER
Examined By:	<i>[Signature]</i> DISTRICT PROGRAM DEVELOPMENT ENGINEER
Examined By:	<i>[Signature]</i> DISTRICT OPERATIONS ENGINEER
Examined By:	<i>[Signature]</i> DISTRICT PROJECT IMPLEMENTATION ENGINEER
Examined By:	<i>[Signature]</i> DISTRICT CONSTRUCTION ENGINEER
Examined By:	<i>[Signature]</i> DISTRICT MATERIALS ENGINEER

FILE NAME *	USER NAME *	DESIGNED -	REVISED -	STATE OF ILLINOIS DEPARTMENT OF TRANSPORTATION	INDEX OF SHEETS, STANDARDS, GENERAL NOTES	SCALE: _____ SHEET _____ OF _____ SHEETS STA. _____ TO STA. _____	F.A. RTE. _____ SECTION _____ COUNTY _____ TOTAL SHEETS _____ SHEET NO. _____
PROJECT NO. *	PROJECT NAME *	DRAWN BY *	REVISED -				
MODEL NAME *	PLOT SCALE *	CHECKED -	REVISED -				
	PLOT DATE *	DATE -	REVISED -				

F.A. RTE.	SECTION	COUNTY	TOTAL SHEETS	SHEET NO.
VAR.	09 BRIDGE PAINT 2016-1	VARIOUS	15	2
CONTRACT NO. 78511				
ILLINOIS FED. AID PROJECT				

SUMMARY OF QUANTITIES

0014

CODE NUMBER	ITEM DESCRIPTION	UNIT	TOTAL QUANTITY	100% STATE			
				RURAL		RURAL	
				CH-4 OVER FAI 57 BRIDGE NO. 1 SN 100-0057	TR-241 OVER FAI 57 BRIDGE NO. 2 SN 100-0054	FAI 64 OVER CREEK BRIDGE NO. 3 SN-097-0051	FAI 64 OVER CREEK BRIDGE NO. 4 SN 097-0052
67000400	ENGINEER'S FIELD OFFICE, TYPE A	CAL MO	6	1.5	1.5	1.5	1.5
67100100	MOBILIZATION	L SUM	1	0.25	0.25	0.25	0.25
70100207	TRAFFIC CONTROL AND PROTECTION, STANDARD 701402	EACH	2	1	1		
70100450	TRAFFIC CONTROL AND PROTECTION, STANDARD 701201	L SUM	1	0.5	0.5		
70100700	TRAFFIC CONTROL AND PROTECTION, STANDARD 701406	L SUM	1			0.5	0.5
70106800	CHANGEABLE MESSAGE SIGN	CAL MO	6	1.5	1.5	1.5	1.5
70107004	PAVEMENT MARKING BLACKOUT TAPE, 4"	FOOT	6440	3220	3220		
70107006	PAVEMENT MARKING BLACKOUT TAPE, 6"	FOOT	1600	800	800		
70300220	TEMPORARY PAVEMENT MARKING, LINE 4"	FOOT	15960	7980	7980		
78300100	PAVEMENT MARKING REMOVAL	SO. FT.	2946	1473	1473		
X7010410	SPEED DISPLAY TRAILER	CAL MO	6	1.5	1.5	1.5	1.5

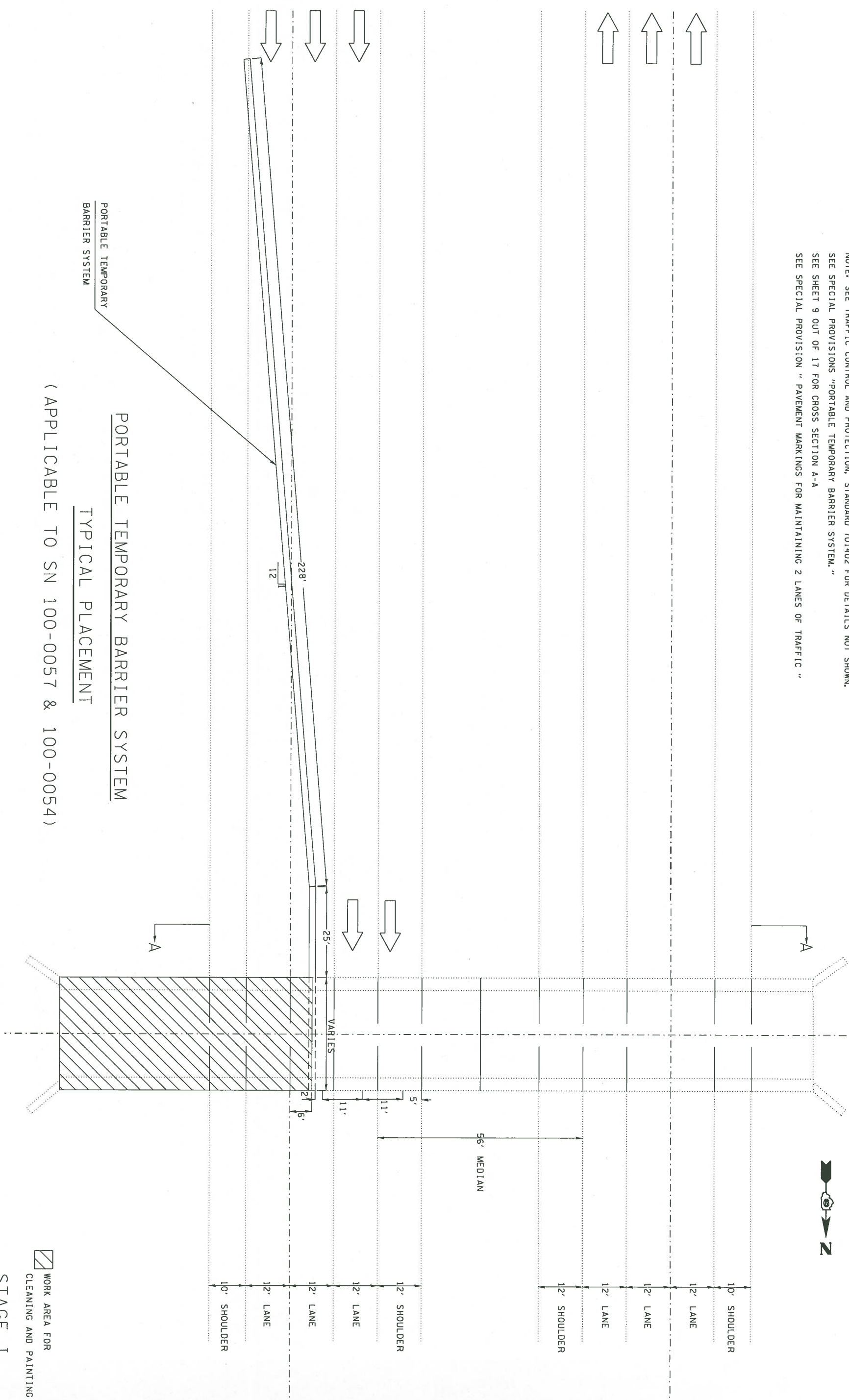
SUMMARY OF QUANTITIES - CONT

0014

CODE NUMBER	ITEM DESCRIPTION	UNIT	100% STATE				
			FUNDING:	RURAL	RURAL	RURAL	RURAL
			LOCATION:	CH-4	TR-241	FAI 64	FAI 64
			ROUTE:	OVER FAI 57	OVER FAI 57	OVER CREEK	OVER CREEK
TOTAL QUANTITY	BRIDGE NO. 1 SN 100-0057	BRIDGE NO. 2 SN 100-0054	BRIDGE NO. 3 SN-097-0051	BRIDGE NO. 4 SN 097-0052			
Z0007101	CONTAINMENT AND DISPOSAL OF LEAD PAINT CLEANING RESIDUES NO. 1	L SUM	1	1			
Z0007102	CONTAINMENT AND DISPOSAL OF LEAD PAINT CLEANING RESIDUES NO. 2	L SUM	1	1			
Z0007103	CONTAINMENT AND DISPOSAL OF LEAD PAINT CLEANING RESIDUES NO. 3	L SUM	1		1		
Z0007104	CONTAINMENT AND DISPOSAL OF LEAD PAINT CLEANING RESIDUES NO. 4	L SUM	1			1	
Z0010501	CLEANING AND PAINTING STEEL BRIDGE NO. 1	L SUM	1	1			
Z0010502	CLEANING AND PAINTING STEEL BRIDGE NO. 2	L SUM	1	1			
Z0010503	CLEANING AND PAINTING STEEL BRIDGE NO. 3	L SUM	1		1		
Z0010504	CLEANING AND PAINTING STEEL BRIDGE NO. 4	L SUM	1			1	
Z0052396	PORTABLE TEMPORARY BARRIER SYSTEM, TL-3	FOOT	576	288	288		
Z0052399	RELOCATE PORTABLE TEMPORARY BARRIER SYSTEM	FOOT	1728	864	864		

10

NOTE: SEE TRAFFIC CONTROL AND PROTECTION, STANDARD 701402 FOR DETAILS NOT SHOWN.
 SEE SPECIAL PROVISIONS "PORTABLE TEMPORARY BARRIER SYSTEM."
 SEE SHEET 9 OUT OF 17 FOR CROSS SECTION A-A
 SEE SPECIAL PROVISION "PAVEMENT MARKINGS FOR MAINTAINING 2 LANES OF TRAFFIC"



PORTABLE TEMPORARY BARRIER SYSTEM
 TYPICAL PLACEMENT

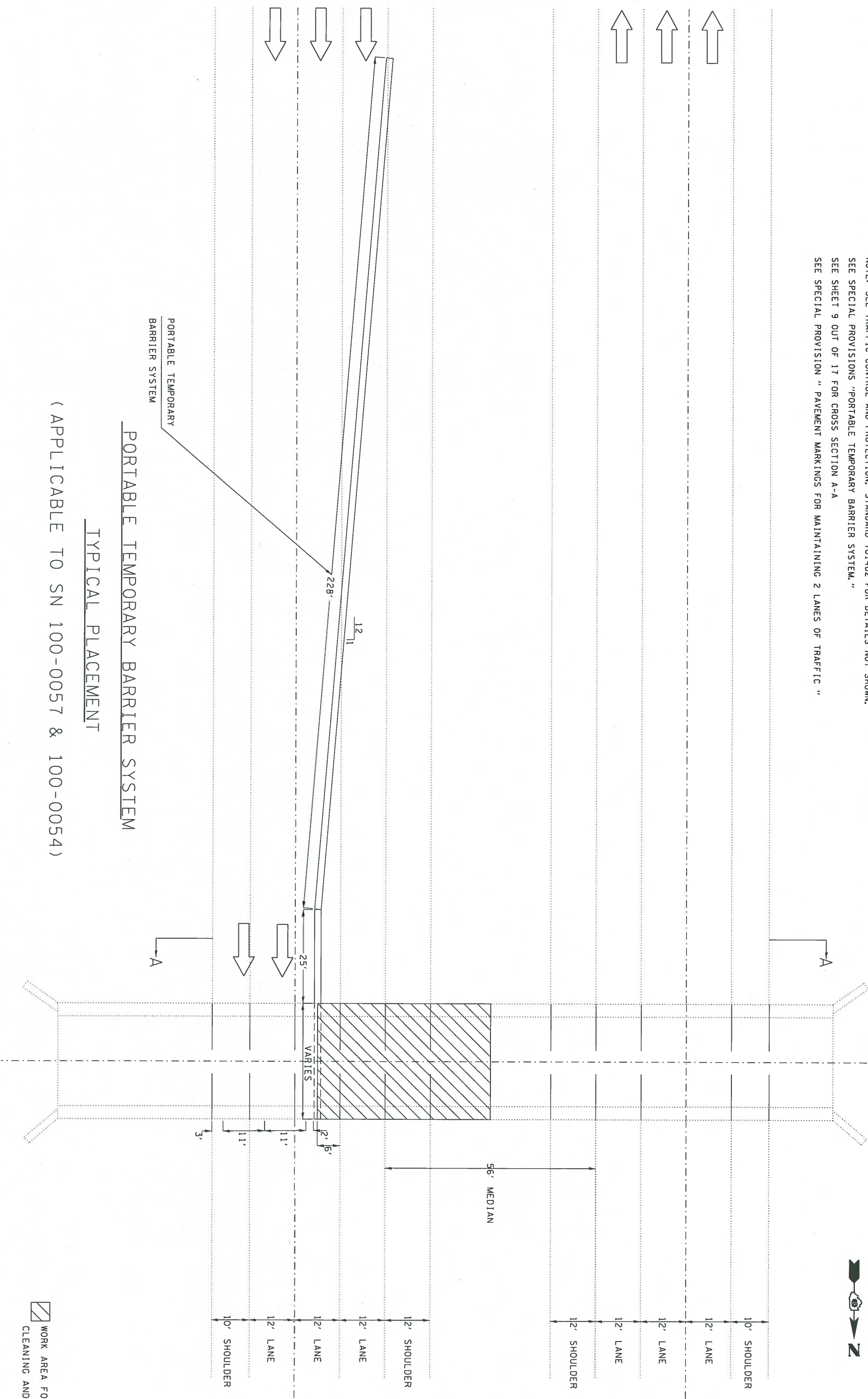
(APPLICABLE TO SN 100-0057 & 100-0054)

WORK AREA FOR
 CLEANING AND PAINTING

STAGE I

FILE NAME: p:\11\BCEBDM\TCG\Illinois\gwp\PILOT\Documents\DOT Office\District 9\Projects\7811\BAR\BAR\BAR\7811-sh-dgn	USER NAME: hststevch	DESIGNED: -	REVISOR: -	STATE OF ILLINOIS DEPARTMENT OF TRANSPORTATION	PORTABLE TEMPORARY BARRIER SYSTEM TYPICAL PLACEMENT	F.A. RITE: VAR. D9 BRIDGE PAINT 2016-1	SECTION: VARIOUS	COUNTY: ILLINOIS FED. AID PROJECT	TOTAL SHEET NO.: 5
PLOT SCALE: 1/8" = 1'-0"	PLOT DATE: 12/11/2015	CHECKED: -	REVISOR: -	SCALE: SHEET OF SHEETS STA. TO STA.	CONTRACT NO. 78511				

NOTE: SEE TRAFFIC CONTROL AND PROTECTION, STANDARD 701402 FOR DETAILS NOT SHOWN.
 SEE SPECIAL PROVISIONS "PORTABLE TEMPORARY BARRIER SYSTEM."
 SEE SHEET 9 OUT OF 17 FOR CROSS SECTION A-A
 SEE SPECIAL PROVISION "PAVEMENT MARKINGS FOR MAINTAINING 2 LANES OF TRAFFIC"



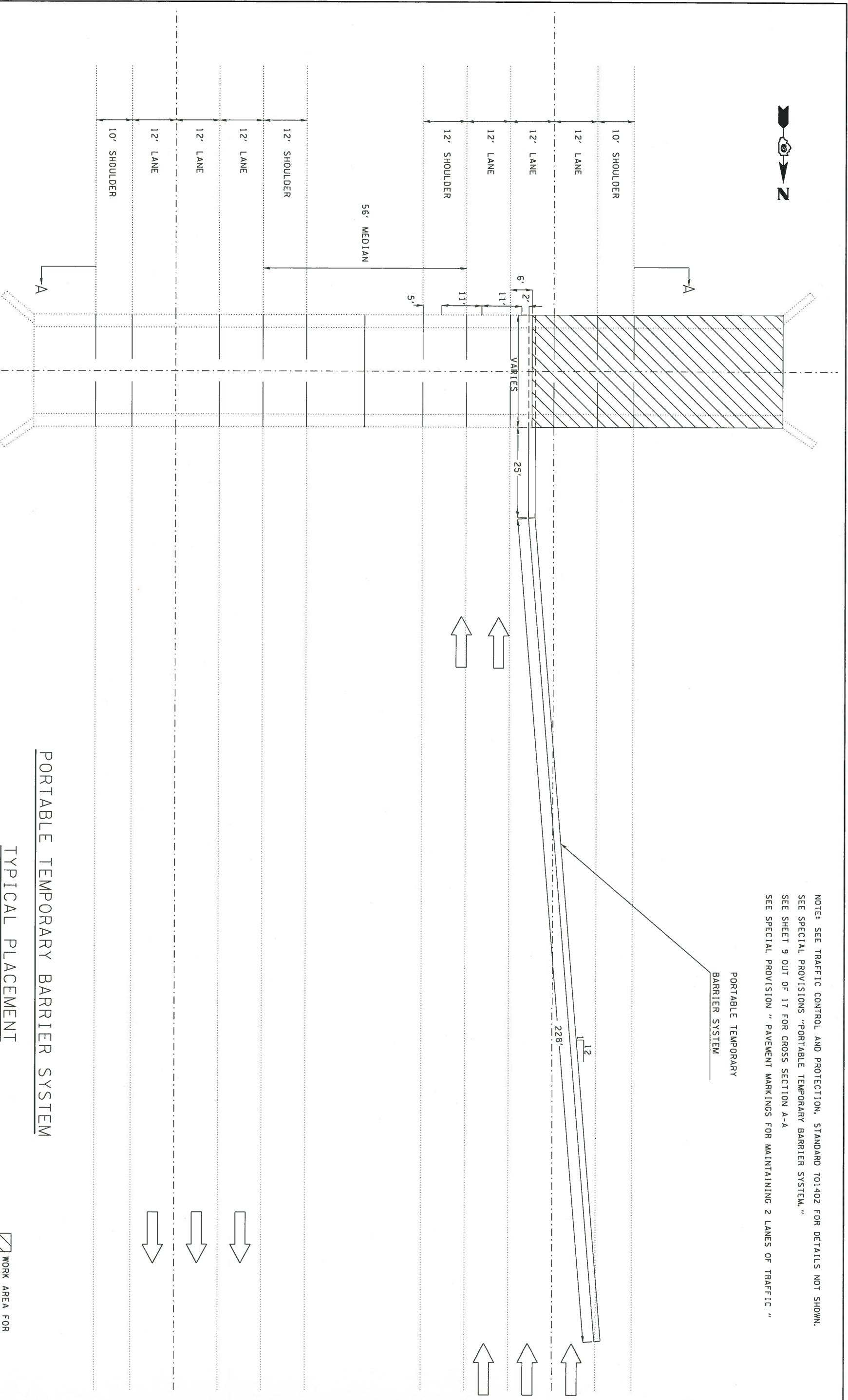
PORTABLE TEMPORARY BARRIER SYSTEM
 PORTABLE TEMPORARY BARRIER SYSTEM
 TYPICAL PLACEMENT
 (APPLICABLE TO SN 100-0057 & 100-0054)

WORK AREA FOR
 CLEANING AND PAINTING
 STAGE II

FILE NAME = p:\110848\BID\TFC\Illinois\gpc\PI001\04	USER NAME = halsstead	DESIGNED - DANAWA\CD\halsstead	REVISED -	STATE OF ILLINOIS DEPARTMENT OF TRANSPORTATION	SCALE:	PORTABLE TEMPORARY BARRIER SYSTEM TYPICAL PLACEMENT	F.A. VAR.	SECTION D9 BRIDGE PAINT 2016-1	COUNTY VARIOUS	TOTAL SHEET SHEETS NO. 5 6
Plot SCALE = 1/8" = 100'-0"	Plot DATE = 12/11/2015	CHECKED -	REVISED -		SHEET	OF	SHEETS	STA.	TO STA.	ILLINOIS FED. AID PROJECT



NOTE: SEE TRAFFIC CONTROL AND PROTECTION, STANDARD 701402 FOR DETAILS NOT SHOWN.
 SEE SPECIAL PROVISIONS "PORTABLE TEMPORARY BARRIER SYSTEM."
 SEE SHEET 9 OUT OF 17 FOR CROSS SECTION A-A
 SEE SPECIAL PROVISION "PAVEMENT MARKINGS FOR MAINTAINING 2 LANES OF TRAFFIC"



PORTABLE TEMPORARY
BARRIER SYSTEM

PORTABLE TEMPORARY BARRIER SYSTEM

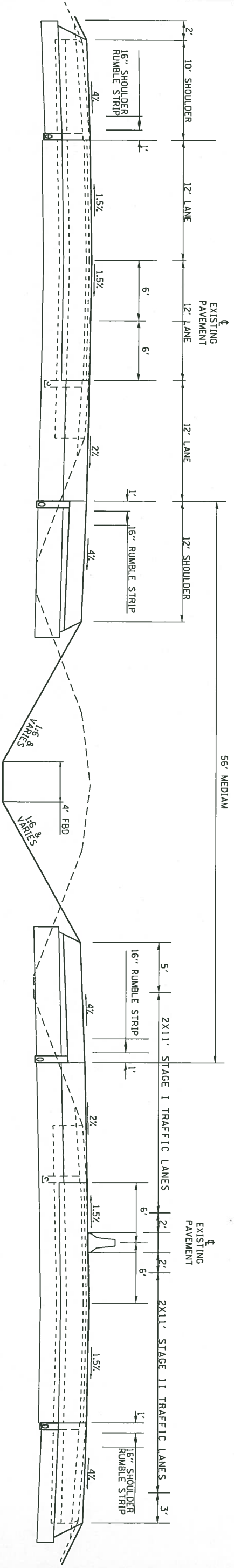
TYPICAL PLACEMENT

(APPLICABLE TO SN 100-0057 & 100-0054)

WORK AREA FOR
CLEANING AND PAINTING

STAGE IV

FILE NAME = p:\11\06\06\INTG\Illinois\gov\PILOT\06\pilot\DOT\offices\District 9\Projects\7851\7851-1\shcdgn	USER NAME = halsstead	DESIGNED - CHECKED - DATE -	REVISED - REVISED - REVISED -
PLAT SCALE = 1/8" = 1'-0"	PLAT DATE = 12/11/2015	DATE	REVISED
STATE OF ILLINOIS DEPARTMENT OF TRANSPORTATION		PORTABLE TEMPORARY BARRIER SYSTEM TYPICAL PLACEMENT	
SCALE:	SHEET	OF	SHEETS
			STA. TO STA.
F.A. SECTION	COUNTY	TOTAL SHEET	
VAR. D9 BRIDGE PAINT 2016-1	VARIOUS	SHEETS NO. 15	
ILLINOIS FED. AID PROJECT		CONTRACT NO. 78511	



(SHOWING EXISTING LANES/SHOULDERS)

I57 SB

(SHOWING MAINTENANCE OF STAGED TRAFFIC;
STAGE III AND STAGE IV TRAFFIC LANES ON I57 SB IS SIMILAR)

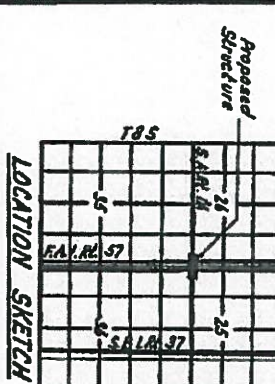
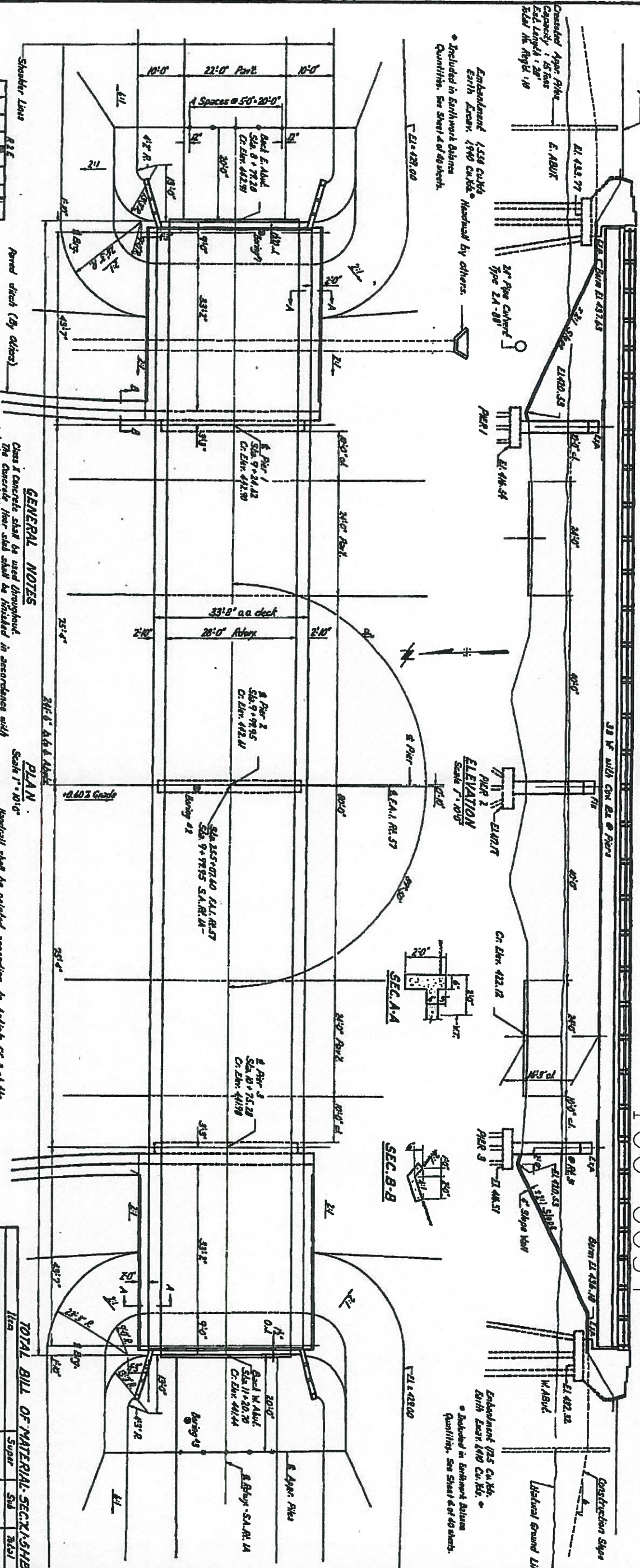
SECTION A-A
(LOOKING NORTH)

I57 NB

(SHOWING MAINTENANCE OF STAGED TRAFFIC;

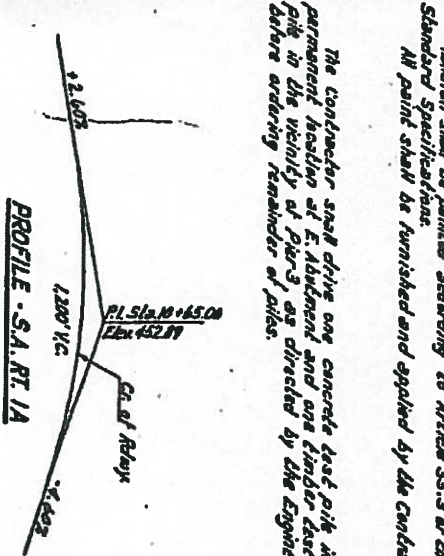
FILE NAME : p:\116848\BID\TEG\116848\gpr\P1001\06		USER NAME : halsaadw		DESIGNED : DARABALA, Chahane, VBSIL-shldgn		REVISED : -	
PLOT SCALE : 1/8" = 1'-0"		PLOT DATE : 12/11/2015		CHECKED : -		REVISED : -	
DATE : -		DATE : -		REVISED : -		REVISED : -	
STATE OF ILLINOIS DEPARTMENT OF TRANSPORTATION				PORTABLE TEMPORARY BARRIER SYSTEM TYPICAL PLACEMENT			
SCALE:		SHEET OF SHEETS STA.		TO STA.		TOTAL SHEET SHEETS NO. 9	
FA. RTE. SECTION		COUNTY		VARIOUS CONTRACT NO. 78511		ILLINOIS FED. AID PROJECT	

DATE	NO.	BY	REVISION
12/11/2015	1	J. E.
12/11/2015	2	J. E.
12/11/2015	3	J. E.
12/11/2015	4	J. E.
12/11/2015	5	J. E.



STA. 255+02.60
 BUILT 1964 BY
 STATE OF ILLINOIS
 FA. RT. 57 SEC. XI-SHB
 FA. PROJ. 1-57-2(N)
 LANDING H20-SH-44
 NAME PLATE
 SEE STA. 218

GENERAL NOTES
 Class I Concrete shall be used throughout.
 The concrete here shall be finished in accordance with Article 51.9 of the Standard Specifications.
 Size and shape of reinforcement shall be as shown on drawings. Reinforcement shall be placed in accordance with Article 51.9 of the Standard Specifications.
 Concrete strength shall be as shown on drawings. Concrete shall be tested in accordance with Article 51.9 of the Standard Specifications.
 All reinforcement shall be placed in accordance with Article 51.9 of the Standard Specifications.
 All reinforcement shall be placed in accordance with Article 51.9 of the Standard Specifications.
 All reinforcement shall be placed in accordance with Article 51.9 of the Standard Specifications.



DESIGN STRESSES
 Concrete: 4,000 psi
 Steel: 60,000 psi
 Allowable Soil Pressure: 2,000 psf

TOTAL BILL OF MATERIAL - SEC. XI-SHB

Item	Super	Sub	Sub
Class I Excavation for Structure	223.680	41.1	41.1
Class I Concrete	2,807	2,084	4,891
Reinforcement Bars	41.20	8,810	57,920
Formwork	1	1	1
Concrete Price	1	1	1
Reinforcement Price	1	1	1
Formwork Price	1	1	1
Subtotal	223.680	41.1	41.1

SECTION XI-SHB
 GENERAL PLAN & ELEVATION
 S.A. RT. 1A OVER
 FA. RT. 57 SEC. XI-SHB(F)
 WILLIAMSON COUNTY
 STA. 255+02.60

FILE NAME: ...
 USER NAME: ...
 PROJECT: ...
 CHECKED: ...
 DATE: ...

DESIGNED: ...
 CHECKED: ...
 DATE: ...

REVISIONS:

REVISION	DATE	BY
1	12/11/2015	J. E. ...
2	12/11/2015	J. E. ...
3	12/11/2015	J. E. ...
4	12/11/2015	J. E. ...
5	12/11/2015	J. E. ...

STATE OF ILLINOIS
 DEPARTMENT OF TRANSPORTATION

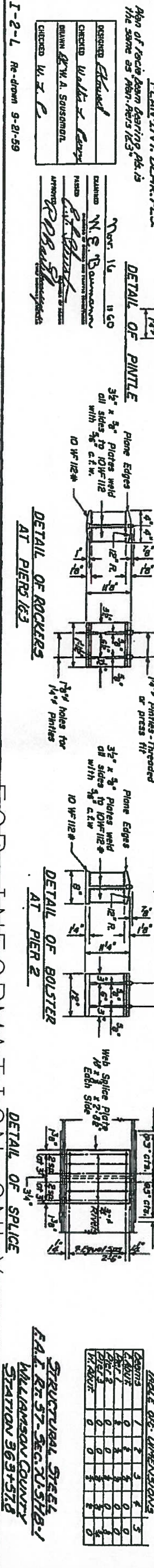
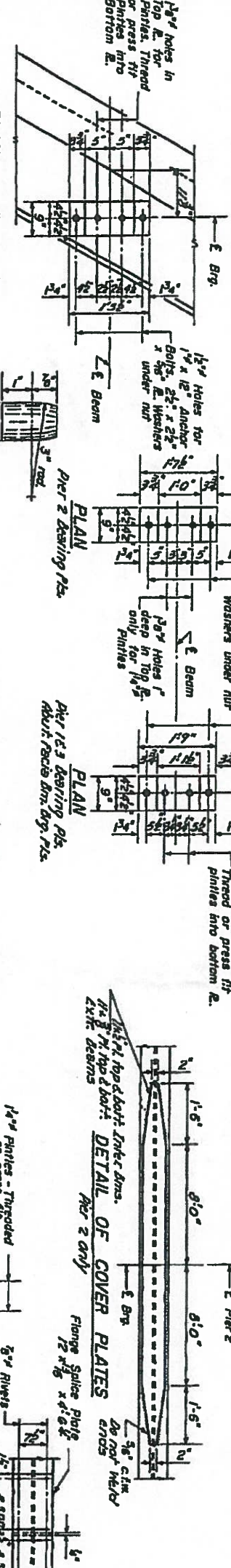
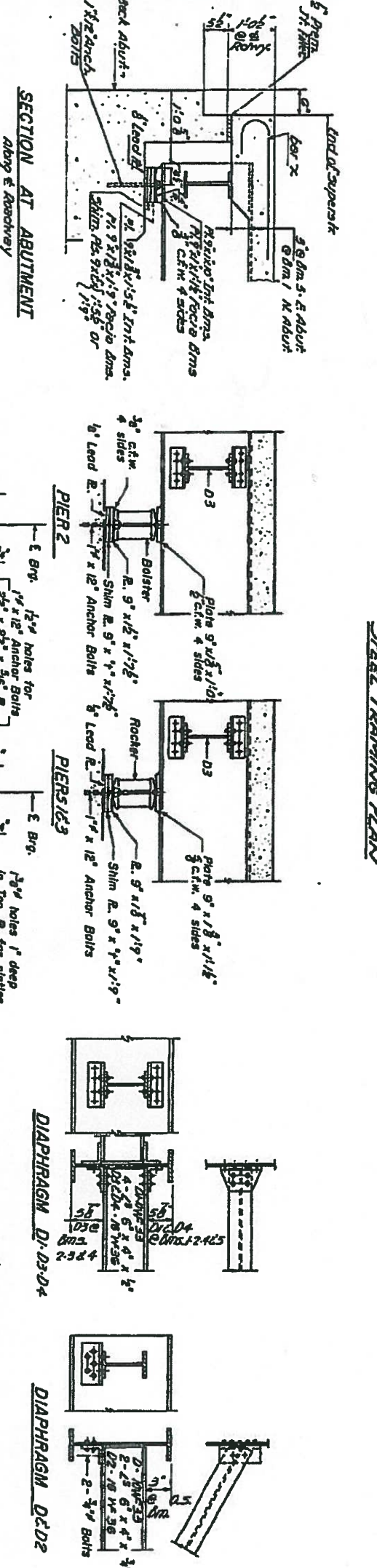
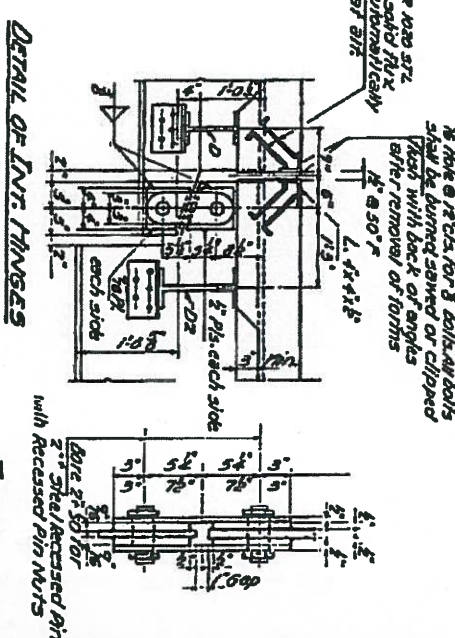
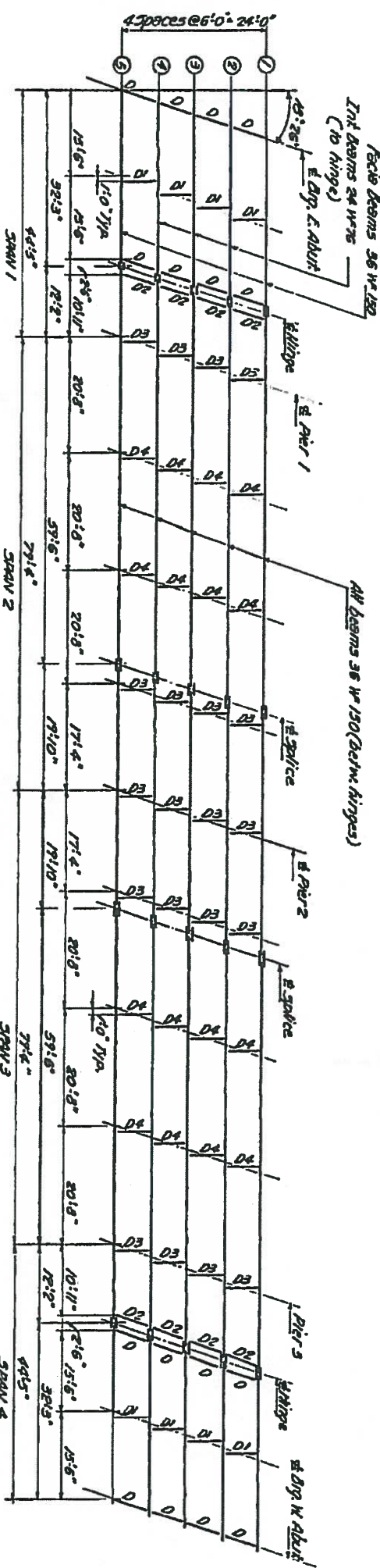
SN 100-0057

SHEET 1 OF 10

TO STA. ...

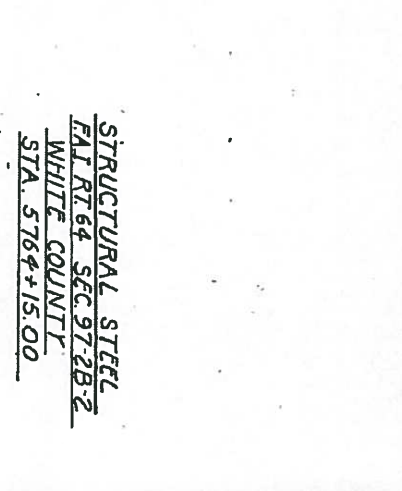
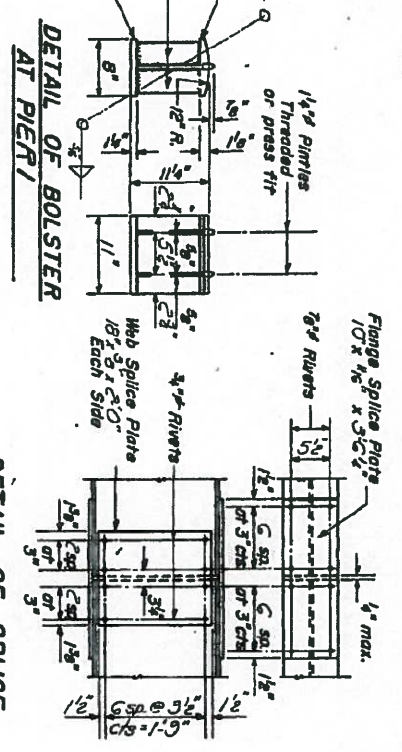
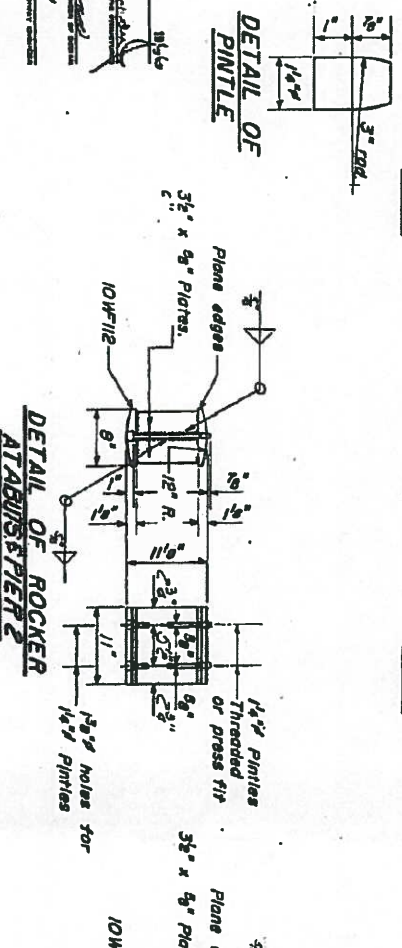
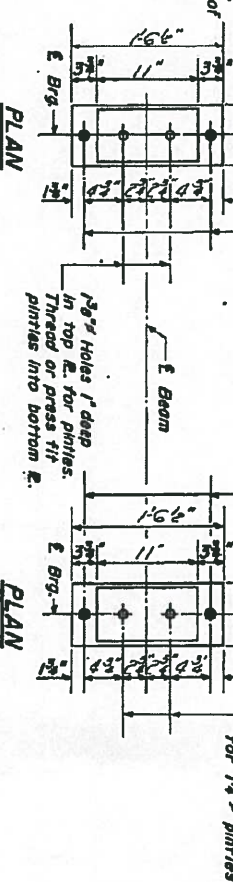
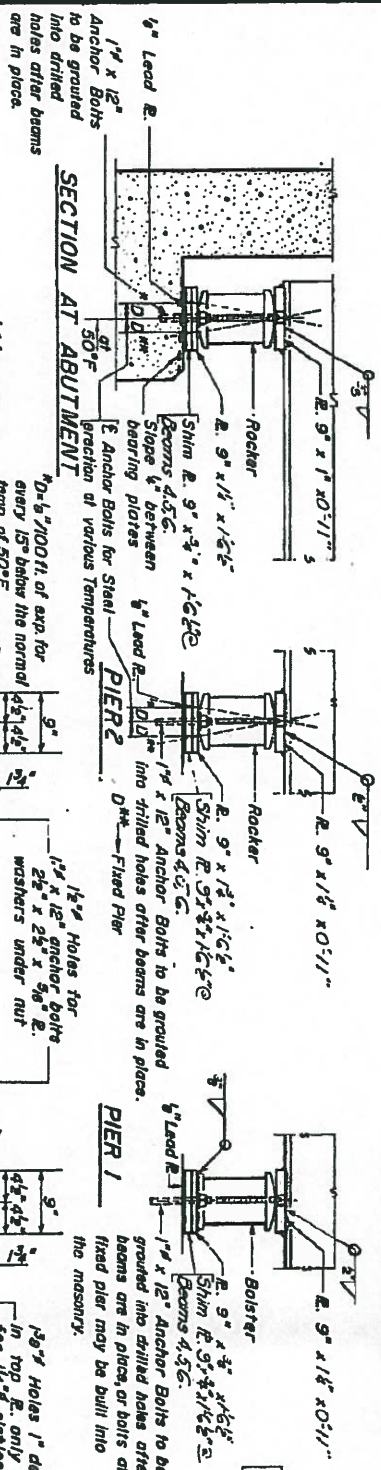
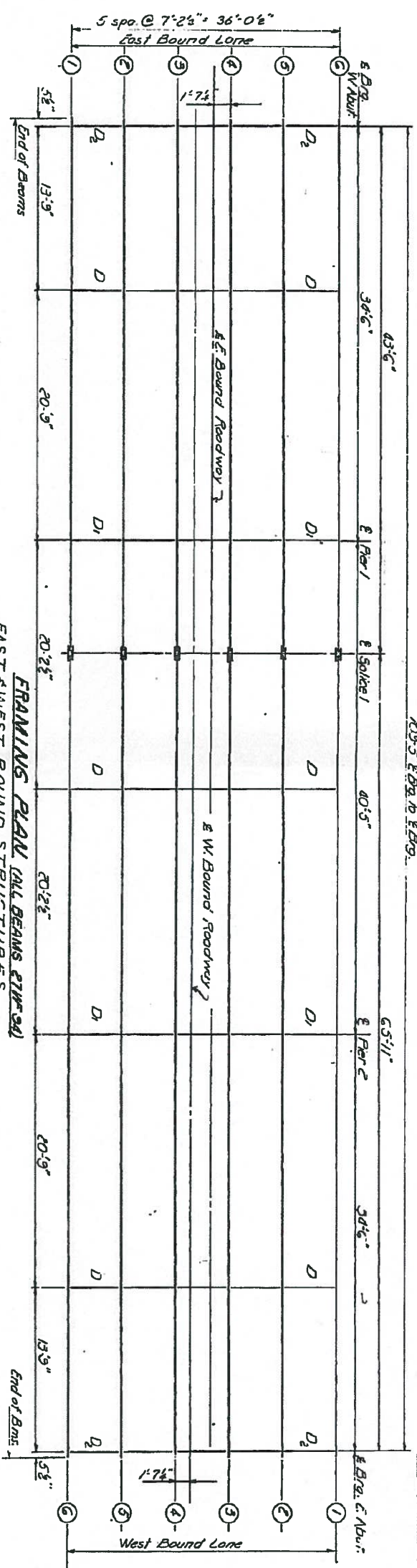
STATE OF ILLINOIS
DEPARTMENT OF PUBLIC WORKS & BUILDINGS
DIVISION OF HIGHWAYS

DATE	DESIGNED	BY	SHEET NO. 4
11/11/59	WILLIAMSON	28	8 SHEETS



Location	Span 1	Span 2	Span 3	Span 4	Span 5
Beam 1	515.17	515.25	515.28	515.21	515.10
Beam 2	515.41	515.49	515.51	515.47	515.36
Beam 3	515.44	515.52	515.54	515.50	515.40
Beam 4	515.58	515.65	515.71	515.68	515.58
Beam 5	515.55	515.65	515.68	515.65	515.56
Beam 6	515.51	515.61	515.65	515.63	515.54
Beam 7	515.16	515.27	515.31	515.30	515.22
Beam 8	515.08	515.20	515.25	515.23	515.16
Beam 9	514.73	514.84	514.90	514.87	514.82

FILE NAME : USER NAME : halsteads DESIGNED : N. S. B. O. W. 11/11/59
 PROJECT : ILLINOIS STATE DEPARTMENT OF PUBLIC WORKS & BUILDINGS DIVISION OF HIGHWAYS
 SHEET : 28 OF 28 SHEETS STA. : 514.82 TO STA. : 514.82
 SCALE : 1/2" = 1'-0"
 DATE : 11/11/59
 CHECKED : W. J. P.
 DESIGNED : N. S. B. O. W.
 DRAWN : W. J. P.
 IN CHARGE : W. J. P.
 APPROVED : W. J. P.
 STATE OF ILLINOIS
 DEPARTMENT OF TRANSPORTATION
 SN 100-0054
 STRUCTURAL STEEL
 E. I. R. 57-SEC. 7.5-H.B.1
 WILLIAMSON COUNTY
 STATION 563+57.8



ELEVATION TOP OF 21W-94

Beam	E. Pier 1	E. Pier 2	E. Soler 1	E. Soler 2	E. Pier 1	E. Pier 2	E. Soler 1	E. Soler 2
1	305.5	305.5	305.5	305.5	305.5	305.5	305.5	305.5
2	305.5	305.5	305.5	305.5	305.5	305.5	305.5	305.5
3	305.5	305.5	305.5	305.5	305.5	305.5	305.5	305.5
4	305.5	305.5	305.5	305.5	305.5	305.5	305.5	305.5
5	305.5	305.5	305.5	305.5	305.5	305.5	305.5	305.5

I-2 7-2-62 Rev. 11-9-62 Rev. 8-16-63 Rev. 12-10-63

DESIGNED	George J. E. K. K. K.
CHECKED	J. K. K.
DRAWN	D. D. J. J. J.
CHECKED	J. K. K.

DESIGNED	Nov. 4, 1963
CHECKED	Nov. 4, 1963
DRAWN	Nov. 4, 1963
CHECKED	Nov. 4, 1963

DESIGNED	Nov. 4, 1963
CHECKED	Nov. 4, 1963
DRAWN	Nov. 4, 1963
CHECKED	Nov. 4, 1963

DESIGNED	Nov. 4, 1963
CHECKED	Nov. 4, 1963
DRAWN	Nov. 4, 1963
CHECKED	Nov. 4, 1963

DESIGNED	Nov. 4, 1963
CHECKED	Nov. 4, 1963
DRAWN	Nov. 4, 1963
CHECKED	Nov. 4, 1963

DESIGNED	Nov. 4, 1963
CHECKED	Nov. 4, 1963
DRAWN	Nov. 4, 1963
CHECKED	Nov. 4, 1963

DESIGNED	Nov. 4, 1963
CHECKED	Nov. 4, 1963
DRAWN	Nov. 4, 1963
CHECKED	Nov. 4, 1963

DESIGNED	Nov. 4, 1963
CHECKED	Nov. 4, 1963
DRAWN	Nov. 4, 1963
CHECKED	Nov. 4, 1963

DESIGNED	Nov. 4, 1963
CHECKED	Nov. 4, 1963
DRAWN	Nov. 4, 1963
CHECKED	Nov. 4, 1963

DESIGNED	Nov. 4, 1963
CHECKED	Nov. 4, 1963
DRAWN	Nov. 4, 1963
CHECKED	Nov. 4, 1963

STRUCTURAL STEEL
FAI RT64 SEC. 97-2B-2
WHITE COUNTY
STA. 5764+15.00

FOR INFORMATION ONLY