

**STATE OF ILLINOIS**  
**DEPARTMENT OF TRANSPORTATION**  
**DIVISION OF HIGHWAYS**  
**PROPOSED**  
**HIGHWAY PLANS**

F.A. RTE.	SECTION	COUNTY	TOTAL SHEETS	SHEET NO.
VAR.	D9 ADA RAMP 2016-1	VARIOUS	25	1
		ILLINOIS	CONTRACT NO. 78523	

FOR INDEX OF SHEETS, SEE SHEET NO. 3

**TRAFFIC DATA**

	LOC 1: MARION, IL	LOC 2: MARION, IL	LOC 3: JOHNSTON CITY, IL
(2011)			
ADT =	12,500 AT OLD IL 13	3,800 AT N. STATE ST.	
(2015)			
ADT =	11,200 AT IL 37	20,900 AT IL 13	9,550 AT IL 37
	LOC 4: BENTON, IL	LOC 2: BENTON, IL	
(2015)			
ADT =	7,500 AT IL 34	12,100 AT IL 14	

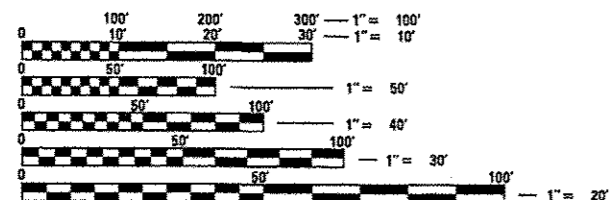
**ROUTE VARIOUS**  
**SECTION D9 ADA RAMP 2016-1**  
**PROJECT ACSTP-000V(069)**  
**ADA IMPROVEMENT**  
**COUNTY VARIOUS**

C-99-025-16



**TOWNSHIPS**

BENTON	WEST MARION
HERRIN	EAST MARION



FULL SIZE PLANS HAVE BEEN PREPARED USING STANDARD ENGINEERING SCALES. REDUCED SIZED PLANS WILL NOT CONFORM TO STANDARD SCALES. IN MAKING MEASUREMENTS ON REDUCED PLANS, THE ABOVE SCALES MAY BE USED.

J.U.L.I.E.  
 JOINT UTILITY LOCATION INFORMATION FOR EXCAVATION  
 1-800-892-0123  
 OR 811

**PROJECT ENGINEER: JOHN A. BRANDON**  
**PROJECT MANAGER: CHARLES STEIN**

**CONTRACT NO. 78523**

LOCATION 5 : BENTON, IL  
 IL 14 STA. AT 887+81  
 (FEDERAL COURT HOUSE)

LOCATION 4 : BENTON, IL  
 IL 34 AT STA. 916+25  
 (BENTON HIGH SCHOOL)

WILLIAMSON/FRANKLIN  
 COUNTY LINE

LOCATION 3 : JOHNSTON CITY, IL  
 IL 37 AT STA 604+11  
 (JEFFERSON ELEMENTARY SCHOOL)

LOCATION 1 : MARION, IL  
 INTERSECTION OF  
 OLD IL 13 (MAIN ST.) AND IL 37

LOCATION 2 : MARION, IL  
 INTERSECTION OF  
 IL 13 AND N. STATE ST.



STATE OF ILLINOIS  
 DEPARTMENT OF TRANSPORTATION  
 DIVISION OF HIGHWAYS

SUBMITTED March 18 20 16  
Jeffrey A. Keim  
 REGION 5 ENGINEER

May 6 20 16  
Maxwell M. Addis P.E.  
 ENGINEER OF DESIGN AND ENVIRONMENT

May 6 20 16  
Omur Osman P.E.  
 DIRECTOR OF HIGHWAYS, CHIEF ENGINEER

**PRINTED BY THE AUTHORITY**  
**OF THE STATE OF ILLINOIS**

Prepared By:

*[Signature]*  
DISTRICT STUDIES & PLANS ENGINEER

Examined By:

*[Signature]*  
DISTRICT LAND ACQUISITION ENGINEER

Examined By:

*[Signature]*  
DISTRICT PROGRAM DEVELOPMENT ENGINEER

Examined By:

*[Signature]*  
DISTRICT OPERATIONS ENGINEER

Examined By:

*[Signature]*  
DISTRICT PROJECT IMPLEMENTATION ENGINEER

Examined By:

*[Signature]*  
DISTRICT CONSTRUCTION ENGINEER

Examined By:

*[Signature]*  
DISTRICT MATERIALS ENGINEER

FILE NAME *	USER NAME * brandenjo	DESIGNED -	REVISED -
ps:\IL004EBIDINTEG\Illinois.gov\WIDOT\Documents\DOT Offices\District 9\Projects\78523\DRAWN to\CA\Sheet\78523.sht.dgn		CHECKED -	REVISED -
Default	PLOT SCALE * 100.0000 / / in.	DATE -	REVISED -
	PLOT DATE * 3/16/2016		

STATE OF ILLINOIS  
DEPARTMENT OF TRANSPORTATION

SIGNATURE SHEET

SCALE: SHEET OF SHEETS STA. TO STA.

F.A. RTE.	SECTION	COUNTY	TOTAL SHEETS	SHEET NO.
VAR. 1	09 ADA RAMP 2016-1	VARIOUS	25	2
CONTRACT NO. 78523				
ILLINOIS FED. AID PROJECT				

# INDEX OF SHEETS

SHEET NO.	DESCRIPTION
1	COVER SHEET
2	SIGNATURE SHEET
3	INDEX OF SHEETS, COMMITMENTS AND STANDARDS
4	GENERAL NOTES
5-8	SUMMARY OF QUANTITIES
9-12	SCHEDULES OF QUANTITIES
13-22	PLAN SHEETS
23-25	DETAILS

## COMMITMENTS

THE ADA RAMPS NEAR THE JOHNSTON CITY ELEMENTARY SCHOOL AND BENTON HIGH SCHOOL WILL BE CONSTRUCTED AS TO NOT INTERFERE WITH SCHOOL ACTIVITIES. THE CONTRACTOR AND / OR RESIDENT ENGINEER WILL CONTACT THE SCHOOL OFFICIALS WITHIN 30 DAYS AFTER THE CONTRACT IS EXECUTED. THE FOLOWING SCHOOL OFFICIALS WILL BE CONTACTED AND COORDINATED WITH PRIOR TO ANY RAMP CONSTRUCTION ADJACENT TO THEIR SCHOOL:

\* DR. AARON MATTOX, BENTON HIGH SCHOOL DISTRICT # 103 SUPERINTENDENT \* (618) 439-6415

\* MRS. KATHY CLARK, JOHNSTON CITY COMMUNITY UNIT SCHOOL DISTRICT #1 SUPERINTENDENT \* (618) 983-8021

## HIGHWAY STANDARDS

- 000001-06\_standardsymbolabbreviations&patterns
- 001001-02\_areasofreinfrebars
- 001006\_decimalofinch&foot
- 280001-07\_temperosioncntrl systems
- 424001-08\_PerpendicularCurbRamps
- 424006-02\_DiagonalCurbRamps
- 424011-02\_CornerParallelCurbRamps
- 424016-02\_MidBlockCurbRamps
- 424021-03\_DepressedCorner
- 604001-04\_frame&lids-type1-140
- 606001-06\_concurbtypeb&comboconcc&g
- 701001-02\_OffRdOp-2L2W-15ftMinFromEOP
- 701006-05\_OffRdOp-2L2W-15ftToEOP
- 701011-04\_OffRdMovingOp-2L2W-DayOnly
- 701301-04\_LnClosure2L2W-ShortTimeOp
- 701311-03\_LnClosure2L2W-MovingOpDayOnly
- 701427-04\_LnClosureMultiLn-IntermittantOrMovingOpL TorEQ40MPH
- 701501-06\_UrbanLnClosure2L2W-Undivided
- 701701-10\_UrbanLnClosureMultiLnIntersection
- 701801-06\_SidewalkCornerOrCrosswalkClosure
- 701901-05\_TrafCntrlDevices
- 720001-01\_SignPanelMountDetails
- 720006-04\_SignPanelErectDetails
- 728001-01\_TelescopingSteelSignSupport
- 780001-05\_TypicalPvmtMrkings
- 805001-01\_ElecSrcvInstallDetails
- 814001-03\_Handholes
- 821101-01\_Luminaire Wiring Diagram
- 825011-03\_LightingControllerPedestalMount240V
- 838001\_BreakawayDevices
- 857001-01\_StdPhaseDesignationDiagrams&PhaseSeq
- 862001-01\_UPS
- 873001-02\_TrafSignalGround&Bond
- 876001-04\_PedestrianPushButtonPost
- 878001-10\_ConcreteFoundationDetails
- 880006-01\_TrfSignalMountDetails-Post&BracketMount
- 886001-01\_DetectorLoopInstallations
- 886006-01\_TypicalLayoutsForDetectionLoops

FILE NAME =	USER NAME = brandonja	DESIGNED -	REVISED -	<b>STATE OF ILLINOIS DEPARTMENT OF TRANSPORTATION</b>	<b>INDEX OF SHEETS, COMMITMENTS AND STANDARDS</b>	F.A. RTE.	SECTION	COUNTY	TOTAL SHEETS	SHEET NO.
p:\11804EBIDINTEG.illinois.gov\PI\DOT\Documents\DOT_Offices\District_9\Projects\78523\DRAMA\CA\Sheet\78523-std.dgn	CHECKED -	REVISED -	VAR.			09 ADA RAMP 2016-1	VARIOUS	25	3	
PLOT SCALE = 100.0000' / in.	DATE -	REVISED -	CONTRACT NO. 78523							
Default	PLOT DATE = 3/21/2016	DATE -	SCALE:			SHEET OF SHEETS	STA. TO STA.	ILLINOIS FED. AID PROJECT		

## GENERAL NOTES

TWO APPLICATIONS OF TEMPORARY EROSION CONTROL SEEDING HAVE BEEN INCLUDED. THE ACTUAL QUANTITY, LOCATIONS, AND APPLICATIONS SHALL BE AS DIRECTED BY THE ENGINEER. THE APPLICATION RATE SHALL BE AS PER ARTICLE 280.04(f).

PRIOR TO PLACEMENT OF THE FINAL PAVEMENT MARKINGS THE RESIDENT ENGINEER SHALL CONTACT THE BUREAU OF OPERATIONS AND ARRANGE FOR INSPECTION AND APPROVAL OF THE PAVEMENT MARKING LAYOUT.

THE FINAL LOCATION OF THE DETECTOR LOOPS AND TRAFFIC SIGNAL FOUNDATIONS SHALL BE APPROVED AS DIRECTED BY THE BUREAU OF TRAFFIC OPERATIONS BEFORE INSTALLATION.

DETECTOR LOOP WIRE SHALL BE PLACED IN THE EXISTING CONDUIT FROM THE LOOP SAWCUT TO THE SPLICE POINT AT THE EXISTING HANDHOLE.

ALL DETECTOR LOOPS SHALL HAVE 3 TURNS (BOTH PRESENCE AND CCO).

THE INDUCTION LOOP WIRE AND LEAD-IN WIRE SHALL BE INSTALLED IN ACCORDANCE WITH THE MANUFACTURER'S RECOMMENDATION OR AS INDICATED ON THE PLANS. SHIELDED CABLE TO LOOP LEADS SHALL BE GROUNDED AT CONTROLLER TERMINAL ONLY.

EXISTING SURFACE DISTURBED DURING EXCAVATION FOR FOUNDATIONS AND PUSH PITS SHALL BE RESTORED TO THE LIMITS AND CONDITION SPECIFIED BY THE ENGINEER OR AS SHOWN ON THE PLANS. UNLESS NOTED OTHERWISE ON THE PLANS THE REMOVAL AND RESTORATION SHALL BE INCLUDED IN THE CONTRACT.

CABLE QUANTITIES ARE MEASURED IN PLAN VIEW.

IN AREAS WHERE MULTIPLE RUNS OF PARALLEL CONDUIT ARE IN THE SAME LOCATION, TRENCH AND BACKFILL WILL ONLY BE PAID FOR ONCE.

SAWED SLOTS FOR TWISTED PAIR ELECTRIC CABLES SHALL BE LARGER THAN SINGLE CONDUCTOR LOOP SLOTS.

ALL ELECTRIC CABLE AND CONDUIT QUANTITIES ARE ROUNDED UP TO THE NEAREST 5 FT.

ALL NON-ESSENTIAL ELECTRIC CABLE SHALL BE REMOVED FROM EXISTING CONDUIT THAT IS TO BE REUSED FOR INSTALLATION OF PROPOSED ELECTRIC CABLE. THIS WORK WILL BE CONSIDERED INCLUDED IN THE PROPOSED ELECTRIC CABLE PAY ITEM.

FORMS SHALL BE OF METAL ONLY, EXCEPT THAT WOOD FORMS MAY BE USED ON SHORT RADIUS CURVES.

HMA SURFACE IN THE EXISTING GUTTER FLAGS SHALL BE REMOVED AND INCLUDED IN THE COST COMBINATION CONCRETE CURB AND GUTTER REMOVAL.

FILE NAME =	USER NAME = brandon.je	DESIGNED -	REVISED -	<b>STATE OF ILLINOIS DEPARTMENT OF TRANSPORTATION</b>	<b>GENERAL NOTES</b>	F.A. RTE.	SECTION	COUNTY	TOTAL SHEETS	SHEET NO.
pw\11.284EBIDINTEG.illinois.gov\PI00T\Documents\100T Offices\District 9\Projects\78523\Drawings\CR\Sheets\78523-sht.dgn	CHECKED -	REVISED -	VAR.			D9 ADA RAMP 2016-1	VARIOUS	25	4	
PLOT SCALE = 100.0000' / in.	DATE -	REVISED -	CONTRACT NO. 78523							
PLOT DATE = 3/18/2016	DATE -	REVISED -	ILLINOIS FED. AID PROJECT							
Default				SCALE:		SHEET OF SHEETS		STA. TO STA.		

# SUMMARY OF QUANTITIES

COUNTY:	VARIOUS
ROUTE:	VARIOUS
FUNDING:	80% FEDERAL 20% STATE
LOCATION:	URBAN
TOTAL QUANTITY	ROADWAY 0021

CODE NUMBER	ITEM DESCRIPTION	UNIT	TOTAL QUANTITY	
25000200	SEEDING, CLASS 2	ACRE	0.5	0.5
25000350	SEEDING, CLASS 7	ACRE	0.5	0.5
25000400	NITROGEN FERTILIZER NUTRIENT	POUND	45	45
25000500	PHOSPHORUS FERTILIZER NUTRIENT	POUND	45	45
25000600	POTASSIUM FERTILIZER NUTRIENT	POUND	45	45
25000700	AGRICULTURAL GROUND LIMESTONE	TON	1	1
25100115	MULCH, METHOD 2	ACRE	0.5	0.5
28000250	TEMPORARY EROSION CONTROL SEEDING	POUND	50	50
42001300	PROTECTIVE COAT	SQ YD	125	125
42400200	PORTLAND CEMENT CONCRETE SIDEWALK 5 INCH	SQ FT	2,459	2,459
42400800	DETECTABLE WARNINGS	SQ FT	177	177
44000500	COMBINATION CURB AND GUTTER REMOVAL	FOOT	388	388
44000600	SIDEWALK REMOVAL	SQ FT	2,300	2,300
44213204	TIE BARS 3/4"	EACH	18	18

19

# SUMMARY OF QUANTITIES - CONT

COUNTY:	VARIOUS
ROUTE:	VARIOUS
FUNDING:	80% FEDERAL 20% STATE
LOCATION:	URBAN
TOTAL QUANTITY	ROADWAY 0021

CODE NUMBER	ITEM DESCRIPTION	UNIT	TOTAL QUANTITY	ROADWAY 0021
60263100	INLETS TO BE RECONSTRUCTED WITH NEW TYPE 3 FRAME AND GRATE	EACH	1	1
60600605	CONCRETE CURB, TYPE B	FOOT	377	377
60603800	COMBINATION CONCRETE CURB AND GUTTER, TYPE B-6.12	FOOT	54	54
60605000	COMBINATION CONCRETE CURB AND GUTTER, TYPE B-6.24	FOOT	334	334
67100100	MOBILIZATION	LSUM	1	1
70102620	TRAFFIC CONTROL AND PROTECTION, STANDARD 701501	LSUM	1	1
70102635	TRAFFIC CONTROL AND PROTECTION, STANDARD 701701	LSUM	1	1
70102640	TRAFFIC CONTROL AND PROTECTION, STANDARD 701801	LSUM	1	1
70300210	TEMPORARY PAVEMENT MARKING LETTERS AND SYMBOLS	SQ FT	47	47
70300220	TEMPORARY PAVEMENT MARKING - LINE 4"	FOOT	50	50
70300240	TEMPORARY PAVEMENT MARKING - LINE 6"	FOOT	1,176	1,176
70300260	TEMPORARY PAVEMENT MARKING - LINE 12"	FOOT	1,115	1,115
70300280	TEMPORARY PAVEMENT MARKING - LINE 24"	FOOT	97	97

# SUMMARY OF QUANTITIES - CONT

COUNTY:	VARIOUS
ROUTE:	VARIOUS
FUNDING:	80% FEDERAL 20% STATE
LOCATION:	URBAN
TOTAL QUANTITY	ROADWAY 0021

CODE NUMBER	ITEM DESCRIPTION	UNIT	TOTAL QUANTITY	
* 72000100	SIGN PANEL - TYPE 1	SQ FT	22	22
* 78000100	THERMOPLASTIC PAVEMENT MARKING - LETTERS AND SYMBOLS	SQ FT	47	47
* 78000200	THERMOPLASTIC PAVEMENT MARKING - LINE 4"	FOOT	50	50
* 78000400	THERMOPLASTIC PAVEMENT MARKING - LINE 6"	FOOT	1,177	1,177
* 78000600	THERMOPLASTIC PAVEMENT MARKING - LINE 12"	FOOT	1,115	1,115
* 78000650	THERMOPLASTIC PAVEMENT MARKING - LINE 24"	FOOT	97	97
78300100	PAVEMENT MARKING REMOVAL	SQ FT	1,127	1,127
* 81028340	UNDERGROUND CONDUIT, PVC, 1 1/2" DIA.	FOOT	128	128
* 81028350	UNDERGROUND CONDUIT, PVC, 2" DIA.	FOOT	280	280
* 87301215	ELECTRIC CABLE IN CONDUIT, SIGNAL NO. 14 2C	FOOT	2,180	2,180
* 87301245	ELECTRIC CABLE IN CONDUIT, SIGNAL NO. 14 5C	FOOT	480	480
* 87301255	ELECTRIC CABLE IN CONDUIT, SIGNAL NO. 14 7C	FOOT	825	825
* 87500600	TRAFFIC SIGNAL POST, 10 FT.	EACH	1	1

\* SPECIALTY ITEM

# SUMMARY OF QUANTITIES - CONT

COUNTY:	VARIOUS
ROUTE:	VARIOUS
FUNDING:	80% FEDERAL 20% STATE
LOCATION:	URBAN
TOTAL QUANTITY	ROADWAY 0021

CODE NUMBER	ITEM DESCRIPTION	UNIT	TOTAL QUANTITY	ROADWAY 0021
* 87602000	PEDESTRIAN PUSH-BUTTON POST	EACH	7	7
* 87800100	CONCRETE FOUNDATION, TYPE A	FOOT	24	24
* 87900100	DRILL EXISTING FOUNDATION	EACH	1	1
* 87900200	DRILL EXISTING HANDHOLE	EACH	15	15
* 88102810	PEDESTRIAN SIGNAL HEAD, POLYCARBONATE, LED, 1-FACE, BRACKET MOUNTED	EACH	4	4
* 88102830	PEDESTRIAN SIGNAL HEAD, POLYCARBONATE, LED, 2-FACE, BRACKET MOUNTED	EACH	10	10
* 88600100	DETECTOR LOOP, TYPE I	FOOT	276	276
* X0325936	SOLAR-POWERED FLASHER/POST MOUNTED (YELLOW LED DISPLAY)	EACH	2	2
* X2600012	REMOVE AND RELOCATE SIGN PANEL AND POLE ASSEMBLY	EACH	2	2
* X8760200	ACCESSIBLE PEDESTRIAN SIGNALS	EACH	14	14
* X0320020	REMOVE SCHOOL CROSSING SIGNALS	LSUM	1	1
* X1400152	AUDIBLE PEDESTRIAN PUSH-BUTTON SYSTEM CONTROLLER INTERFACE UNIT	EACH	2	2

5



## CURB RAMPS SCHEDULE

LOCATION	COMB CC&G, REMOVAL	DETECTABLE WARNING	CONC CURB, TY B	COMB CC&G, TYB-6.24	COMB CC&G, TYB-6.12	SIDEWALK REMOVAL	TIE BARS 3/4"	PC CONC SIDEWALK 5"	PROTECTIVE COAT	CLASS 2 SEEDING	NITROGEN FERTILIZER	PHOSPHORUS FERTILIZER	POTASSIUM FERTILIZER	AG GROUND LIMESTONE	MULCH METHOD 2	CLASS 7 SEEDING	TEMP EROSION CONTROL SEEDING	COMMENTS
	FOOT	SQ FT	FOOT	FOOT	FOOT	SQ FT	EACH	SQ FT	SQ YD	ACRE	POUND	POUND	POUND	TON	ACRE	ACRE	POUND	
<b>MARION, IL</b>																		
LOCATION 1 ( IL 37 & OLD IL 13)																		
NW QUAD	20.0	10	16.0	20.0	0	121.5	0	125.0	5.2	0.05	4.5	4.5	4.5	0.1	0.05	0.05	5	STD 424016
NE QUAD	22.0	10	0	22.0	0	142.6	4	142.6	6.3	0	0	0	0	0	0	0	0	STD 424006
SW QUAD	12	10	71	12.0	0	217.5	2	190.0	7.4	0.1	5	5	5	0.1	0.1	0.1	5	STD 424016
SE QUAD	21	10	0	21.0	0	192.8	0	193.0	6.0	0	0	0	0	0	0	0	0	STD 424006
LOCATION 2 ( IL 13 & STATE ST.)																		
SE QUADRANT	15.5	22	28.3	15.5	0	75	0	117.2	5.9	0.05	4.5	4.5	4.5	0.1	0.05	0.05	5	STD 424006
NE QUADRANT	62.4	29.3	67.2	62.4	0	224	1	290.0	21.6	0.05	4.5	4.5	4.5	0.1	0.05	0.05	5	STD 424016
NW QUADRANT	10.8	16.1	16.5	10.8	0	135.0	0	173.1	4.0	0.05	4.5	4.5	4.5	0.1	0.05	0.05	5	STD 424001
SW QUADRANT	21.5	10	38.0	21.5	0	104.6	5	130.7	8.3	0.05	4.5	4.5	4.5	0.1	0.05	0.05	5	STD 424011
<b>TOTAL</b>	<b>185</b>	<b>117</b>	<b>237</b>	<b>185</b>	<b>0</b>	<b>1213</b>	<b>12</b>	<b>1362</b>	<b>65</b>	<b>0.3</b>	<b>27</b>	<b>27</b>	<b>27</b>	<b>0.6</b>	<b>0.3</b>	<b>0.3</b>	<b>30</b>	

LOCATION	COMB CC&G, REMOVAL	DETECTABLE WARNING	CONC CURB, TY B	COMB CC&G, TYB-6.24	COMB CC&G, TYB-6.12	SIDEWALK REMOVAL	TIE BARS 3/4"	PC CONC SIDEWALK 5"	PROTECTIVE COAT	CLASS 2 SEEDING	NITROGEN FERTILIZER	PHOSPHORUS FERTILIZER	POTASSIUM FERTILIZER	AG GROUND LIMESTONE	MULCH METHOD 2	CLASS 7 SEEDING	TEMP EROSION CONTROL SEEDING	COMMENTS
	FOOT	SQ FT	FOOT	FOOT	FOOT	SQ FT	EACH	SQ FT	SQ YD	ACRE	POUND	POUND	POUND	TON	ACRE	ACRE	POUND	
<b>JOHNSTON CITY, IL</b>																		
LOCATION 3 ( IL 37)																		
STA. 604+11 RT	27.4	10	28.4	27.4	0	121.6	6	151.5	9.4	0.04	3.6	3.6	3.6	0.08	0.04	0.04	4	STD 424016
STA. 604+11 LT	30.2	10	34.2	30.2	0	120.8	0	158.5	10.6	0.03	2.7	2.7	2.7	0.06	0.03	0.03	3	STD 424016
STA 603+22 RT	13.6	0	0	13.6	0	81.6	0	54.4	3.9	0.03	2.7	2.7	2.7	0.06	0.03	0.03	3	
<b>TOTAL</b>	<b>71</b>	<b>20</b>	<b>63</b>	<b>71</b>	<b>0</b>	<b>324</b>	<b>6</b>	<b>364</b>	<b>24</b>	<b>0.1</b>	<b>9</b>	<b>9</b>	<b>9</b>	<b>0.2</b>	<b>0.1</b>	<b>0.1</b>	<b>10</b>	

-CONT. CURB RAMPS SCHEDULE

LOCATION	COMB CC&G, REMOVAL	DETECTABLE WARNING	CONC CURB, TY B	COMB CC&G, TYB-6.24	COMB CC&G, TYB-6.12	SIDEWALK REMOVAL	TIE BARS 3/4"	PC CONC SIDEWALK 5"	PROTECTIVE COAT	CLASS 2 SEEDING	NITROGEN FERTILIZER	PHOSPHORUS FERTILIZER	POTASSIUM FERTILIZER	AG GROUND LIMESTONE	MULCH METHOD 2	CLASS 7 SEEDING	TEMP EROSION CONTROL SEEDING	COMMENTS
	FOOT	SQ FT	FOOT	FOOT	FOOT	SQ FT	EACH	SQ FT	SQ YD	ACRE	POUND	POUND	POUND	TON	ACRE	ACRE	POUND	
<b>BENTON, IL</b>																		
LOCATION 4 ( IL 34)																		
STA. 916+25 LT	41	10	26	41	0	218.5	0	215.9	13.2	0.1	9	9	9	0.2	0.1	0.1	10	STD 424016
STA. 916+25 RT	37	10	0	37	0	148.0	0	148.0	10.6	0.0	0	0	0	0.0	0.0	0.0	0	STD 424016
LOCATION 5 ( IL 14)																		
STA. 887+81 LT	24	10	24	0	24	216.0	0	203.5	5.5	0	0	0	0	0	0	0	0	STD 424016
STA. 887+81 RT	30	10	28	0	30	180.0	0	166.0	6.8	0	0	0	0	0	0	0	0	STD 424016
<b>TOTALS</b>	<b>132</b>	<b>40</b>	<b>78</b>	<b>78</b>	<b>54</b>	<b>763</b>	<b>0</b>	<b>733</b>	<b>36</b>	<b>0.1</b>	<b>9</b>	<b>9</b>	<b>9</b>	<b>0.2</b>	<b>0.1</b>	<b>0.1</b>	<b>10</b>	
<b>PROJECT TOTALS</b>	<b>388</b>	<b>177</b>	<b>377</b>	<b>334</b>	<b>54</b>	<b>2300</b>	<b>18</b>	<b>2459</b>	<b>125</b>	<b>0.5</b>	<b>45</b>	<b>45</b>	<b>45</b>	<b>1</b>	<b>0.5</b>	<b>0.5</b>	<b>50</b>	

NOTE: ALL BORROW THAT MAY BE REQUIRED FOR SEEDING OF THE GRASS MEDIAN LOCATIONS SHALL BE INCLUDED IN THE COST OF PCC SIDEWALK 5 INCH.

## SIGN SCHEDULE

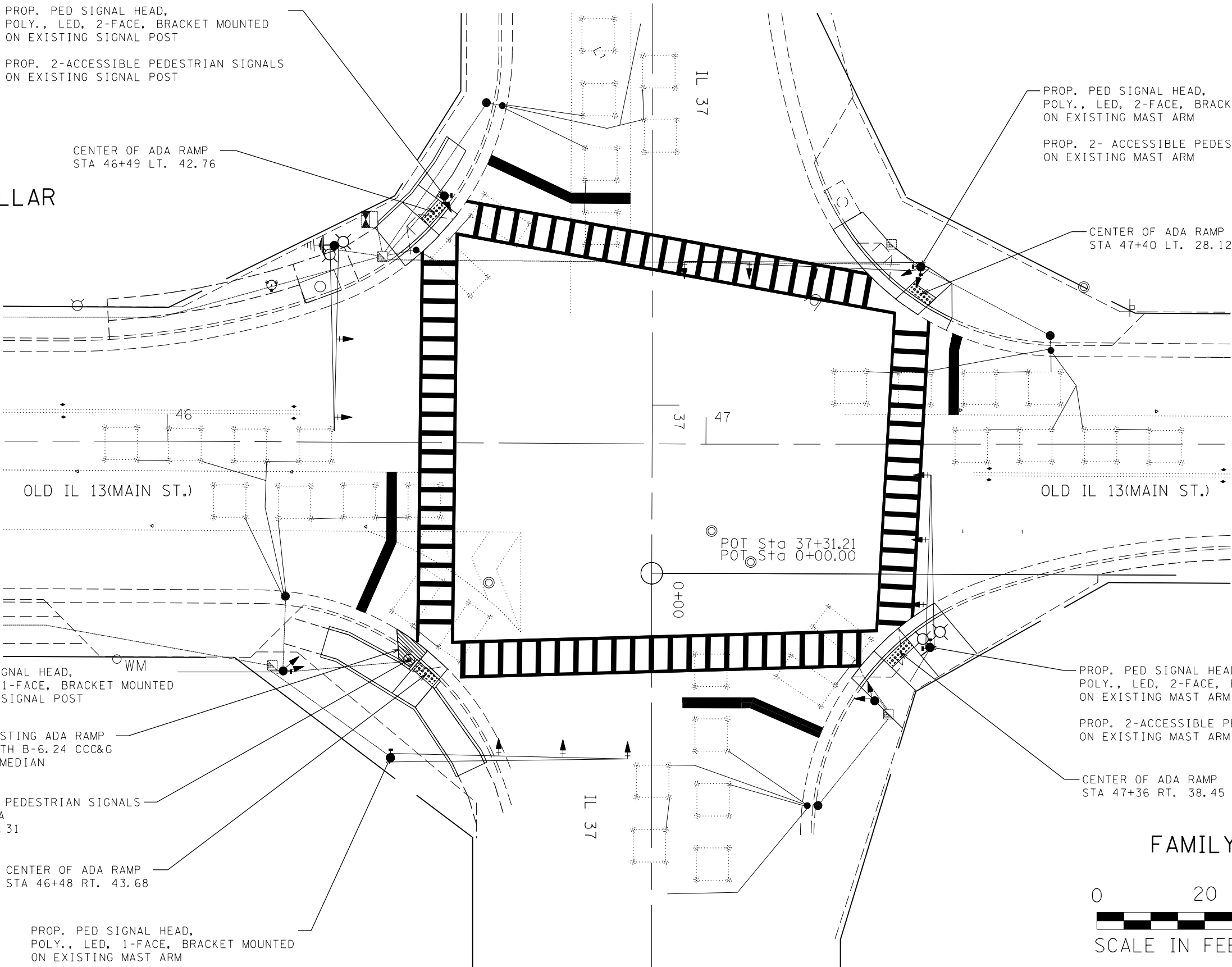
LOCATION	SIGN PANEL-TYPE 1		REMOVE AND RELOCATE SIGN PANEL AND POLE ASSEMBLY	SOLAR-POWERED FLASHER/POST MOUNTED(YELLOW LED DISPLAY)	SCHOOL CROSSING SIGNALS REMOVAL	PED. SIGNAL HEAD, 1-FACE	PED. SIGNAL HEAD, 2-FACE	ACCESSIBLE PEDESTRIAN SIGNAL	PED. PUSH BUTTON POST	TRAFFIC SIGNAL POST, 10 FT.	CONC. FOUNDATION, TY A
	INFO ONLY	SQ FT	EACH	EACH	LUMP SUM	EACH	EACH	EACH	EACH	EACH	FOOT
<b>LOCATION 1-MARION, IL</b>											
<b>IL 37 AND MAIN ST. (OLD IL 13)</b>											
NW QUAD		0	0	0	0	0	2	2	0	0	0
NE QUAD		0	0	0	0	0	2	2	0	0	0
SW QUAD		0	0	0	0	2	0	2	1	0	3
SE QUAD		0	0	0	0	0	2	2	0	0	0
<b>LOCATION 2-MARION, IL</b>											
<b>IL 13 AND N. STATE ST.</b>											
NW QUAD		0	0	0	0	1	0	1	1	1	6
NE QUAD		0	0	0	0	0	2	2	2	0	6
SW QUAD		0	0	0	0	1	0	1	1	0	3
SE QUAD		0	0	0	0	0	2	2	2	0	6
<b>LOCATION 3-JOHNSTON CITY, IL</b>											
<b>IL 37</b>											
STA 602+91 RT											
STA 603+43 LT		0	0	0	1	0	0	0	0	0	0
STA 603+86 RT 13.5'	S1-1, W16-7P 36"X36", 24"X12"	11	0	1	0	0	0	0	0	0	0
STA 604+36 LT 14.0'	S1-1, W16-7P 36"X36", 24"X12"	11	0	1	0	0	0	0	0	0	0
<b>LOCATION 4- BENTON, IL</b>											
<b>IL 34</b>											
STA 916+00 LT 19' TO STA 916+50 LT. 19'		0	1	0	0	0	0	0	0	0	0
<b>LOCATION 5-BENTON, IL</b>											
<b>IL 14</b>											
STA 887+92 LT 20' TO STA 888+06 LT 20'		0	1	0	0	0	0	0	0	0	0
<b>TOTAL</b>		<b>22</b>	<b>2</b>	<b>2</b>	<b>1</b>	<b>4</b>	<b>10</b>	<b>14</b>	<b>7</b>	<b>1</b>	<b>24</b>

# PAVEMENT MARKING SCHEDULE

LOCATION	THERMOPLASTIC PAVEMENT MARKING					TEMPORARY PAVEMENT MARKING					PAVEMENT MARKING REMOVAL SQ FT	REMARKS		
	LINE 4"		LINE 6"	LINE 12"	LINE 24"	WHITE	LINE 4"		LINE 6"	LINE 12"			LINE 24"	WHITE
	YELLOW		WHITE			LET & SYM SQ FT	YELLOW		WHITE				LET & SYM SQ FT	
	LT/RT	SOLID	SOLID	SOLID	SOLID		LT/RT	SOLID	SOLID	SOLID				SOLID
	FOOT	FOOT	FOOT	FOOT		FOOT	FOOT	FOOT	FOOT		SQ FT			
<b>MARION, IL</b>														
LOCATION 1 ( IL 37 & OLD IL 13)														
NW QUAD		0	159	132	29	0	0	159	132	29	0	71	NW QUAD TO NE QUAD	
NE QUAD		0	116	108	14	0	0	116	108	14	0	59	NE QUAD TO SE QUAD	
SW QUAD		0	148	120	27	0	0	148	120	27	0	126	SW QUAD TO NW QUAD	
SE QUAD		0	155	132	27	0	0	155	132	27	0	68	SE QUAD TO SW QUAD	
LOCATION 2 ( IL 13 & N. STATE ST.)														
NW QUAD		0	147	120	0	0	0	147	120	0	0	0	NW QUAD TO NE QUAD	
NE QUAD		0	139	120	0	0	0	138	120	0	0	0	NE QUAD TO SE QUAD	
SW QUAD		0	0	0	0	0	0	0	0	0	0	0	SW QUAD TO NW QUAD	
SE QUAD		0	121	96	0	0	0	121	96	0	0	0	SE QUAD TO SW QUAD	
<b>JOHNSTON CITY, IL</b>														
LOCATION 3 ( IL 37)														
STA 603+22		0	0	0	0	0	0	0	0	0	0	16	EXISTING CROSSWALK	
STA 604+11		0	48	42	0	0	0	48	42	0	0	66	NEW CROSSWALK	
<b>BENTON, IL</b>														
LOCATION 4 ( IL 34)														
916+05	LT/RT	30	0	0	0	31.2	LT/RT	30	0	0	0	31.2	255	EXISTING CROSSWALK, NEW ARROWS
916+25		0	72	165	0	0		0	72	165	0	0	201	NEW CROSSWALK, EXISTING ARROW
LOCATION 5 ( IL 14)														
STA 887+65	LT/RT	20	0	0	0	15.6	LT/RT	20	0	0	0	15.6	150	EXISTING CROSSWALK, NEW ARROW
STA 887+81		0	72	80	0	0		0	72	80	0	0	116	NEW CROSSWALK, EXISTING ARROW
<b>PROJECT TOTALS</b>														
		50	1177	1115	97	47		50	1176	1115	97	47	1127	



FAMILY DOLLAR



PROP. PED SIGNAL HEAD,  
POLY., LED, 2-FACE, BRACKET MOUNTED  
ON EXISTING SIGNAL POST

PROP. 2-ACCESSIBLE PEDESTRIAN SIGNALS  
ON EXISTING SIGNAL POST

PROP. PED SIGNAL HEAD,  
POLY., LED, 2-FACE, BRACKET MOUNTED  
ON EXISTING MAST ARM

PROP. 2- ACCESSIBLE PEDESTRIAN SIGNALS  
ON EXISTING MAST ARM

PROP. PED SIGNAL HEAD,  
POLY., LED, 1-FACE, BRACKET MOUNTED  
ON EXISTING SIGNAL POST

PROP. PED SIGNAL HEAD,  
POLY., LED, 2-FACE, BRACKET MOUNTED  
ON EXISTING MAST ARM

PROP. 2-ACCESSIBLE PEDESTRIAN SIGNALS  
ON EXISTING MAST ARM

PROP. ACCESSIBLE PEDESTRIAN SIGNALS  
CONC. FOUND. TY A  
STA 46+45 RT. 40.31

REMOVE EXISTING ADA RAMP  
REPLACE WITH B-6.24 CCC&G  
AND GRASS MEDIAN

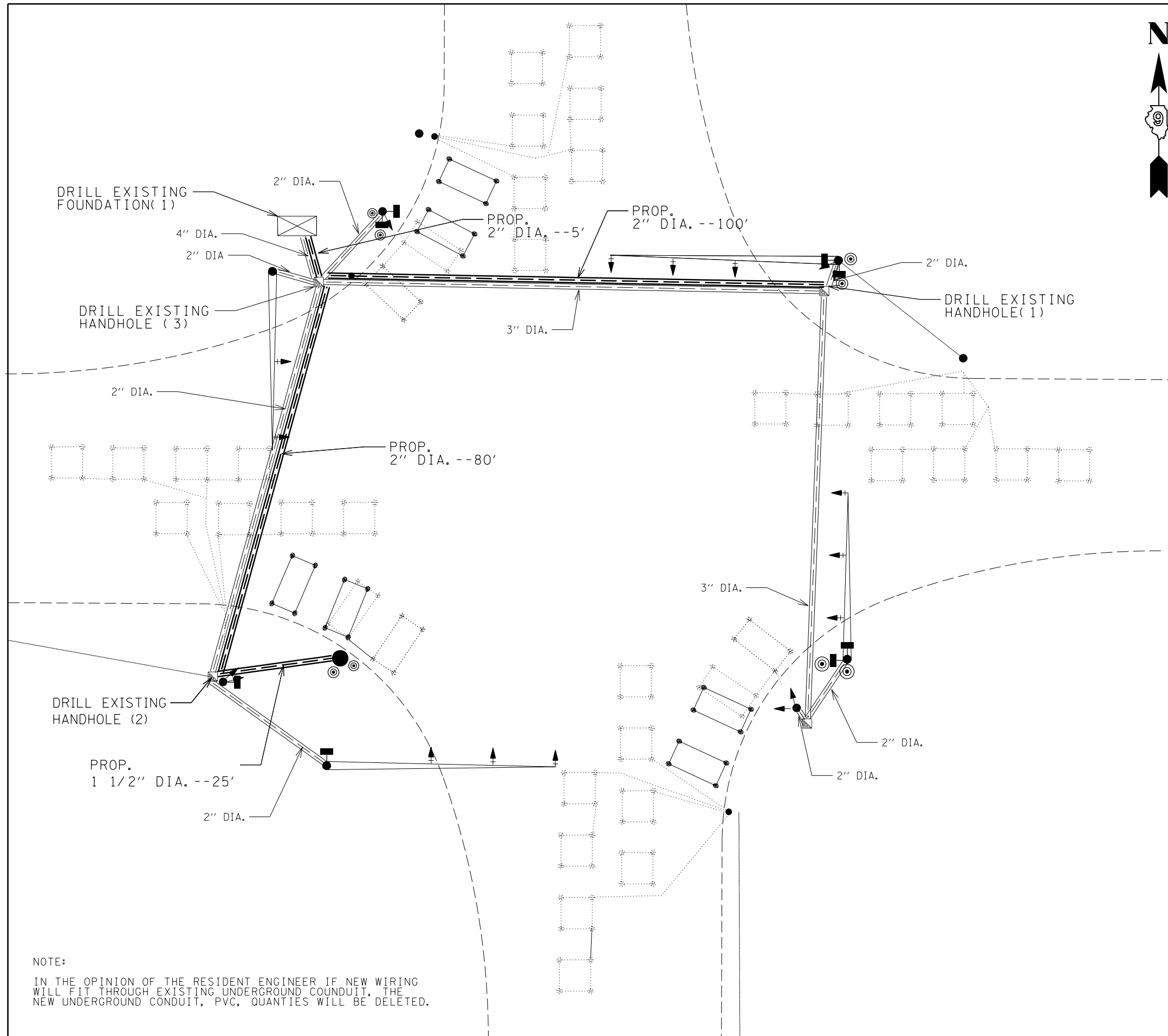
CENTER OF ADA RAMP  
STA 46+48 RT. 43.68

PROP. PED SIGNAL HEAD,  
POLY., LED, 1-FACE, BRACKET MOUNTED  
ON EXISTING MAST ARM











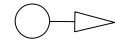
FAMILY VIDEO



FILE NAME =	USER NAME = brandonja	DESIGNED -	REVISED -	<b>STATE OF ILLINOIS DEPARTMENT OF TRANSPORTATION</b>	<b>PLAN SHEET</b>			F.A. RTÉ.	SECTION	COUNTY	TOTAL SHEETS	SHEET NO.	
pw:\IL084EBIDINTEG.illinois.gov\PWIDOT\Documents\IDOT Offices\District 9\Projects\78523\Drawings\CAD\Sheets\78523-sht.dgn		CHECKED -	REVISED -		<b>LOCATION #1 - OLD IL 13 &amp; IL 37</b>			VARIES	D9-ADA RAMP 2016-1	VARIOUS	25	13	
Default		DATE -	REVISED -		SCALE:	SHEET	OF	SHEETS	STA.	TO	STA.	CONTRACT NO. 78523	
												ILLINOIS FED. AID PROJECT	

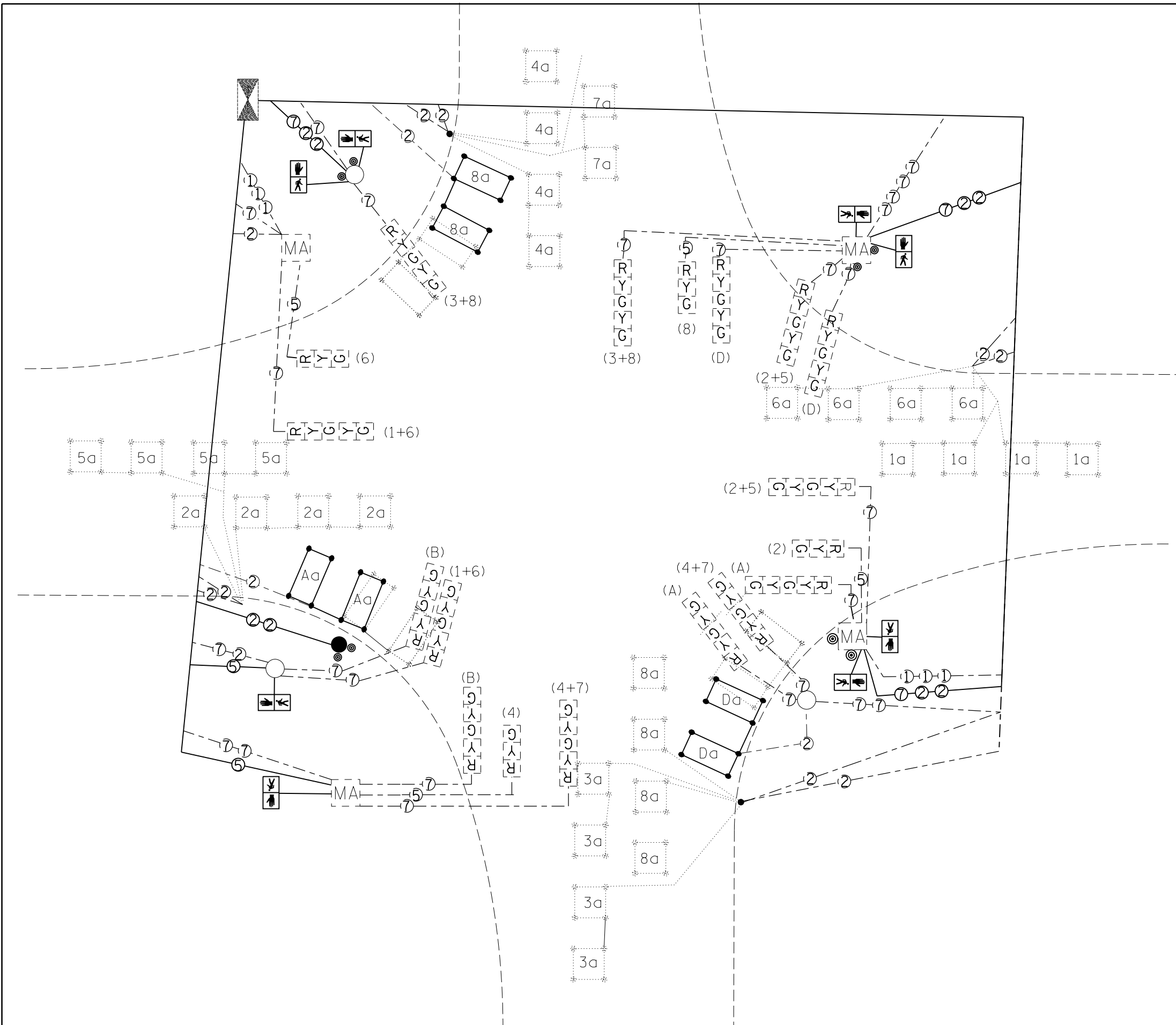


LEGEND

-  - PROPOSED UNDERGROUND CONDUIT, PVC
-  - PROPOSED HANDHOLE
-  - PROPOSED ACCESSIBLE PEDESTRIAN SIGNAL
-  - PROPOSED PEDESTRIAN SIGNAL HEAD, LED, 1-FACE, BRACKET MOUNTED
-  - PROPOSED PEDESTRIAN SIGNAL HEAD, LED, 2-FACE, BRACKET MOUNTED
-  - PEDESTRIAN PUSH BUTTON POST
-  - EXISTING HANDHOLE
-  - EXISTING MAST ARM
-  - EXISTING TRAFFIC SIGNAL CONTROLLER
-  - EXISTING UNDERGROUND CONDUIT
-  - EXISTING SIGNAL POLE

NOTE:  
 IN THE OPINION OF THE RESIDENT ENGINEER IF NEW WIRING WILL FIT THROUGH EXISTING UNDERGROUND CONDUIT, THE NEW UNDERGROUND CONDUIT, PVC, QUANTITIES WILL BE DELETED.

FILE NAME =	USER NAME = brandonja	DESIGNED -	REVISED -	<b>STATE OF ILLINOIS DEPARTMENT OF TRANSPORTATION</b>	<b>EXISTING AND PROSPED TRAFFIC SIGNALS LOCATION #1 - OLD IL 13 &amp; IL 37</b>	F.A. RTE.	SECTION	COUNTY	TOTAL SHEETS	SHEET NO.
pw:\IL\084EBIDINTEG\illinois.gov\PIWIDOT\Documents\IDOT Offices\District 9\Projects\78523\Drawings\CAD\Sheets\78523-sht.dgn		CHECKED -	REVISED -			VARIES	D9 ADA RAMP 2016-1	VARIOUS	25	14
Default	PLOT DATE = 3/18/2016	DATE -	REVISED -			CONTRACT NO. 78523		ILLINOIS FED. AID PROJECT		
SCALE:		SHEET OF SHEETS		STA. TO STA.						



- LEGEND**
- PROP. PUSH BUTTON POST
  - PROP. ACCESSIBLE PEDESTRIAN SIGNAL
  - PROP. PEDESTRIAN SIGNAL HEAD
  - TRAFFIC SIGNAL CONTROLLER CABINET
  - NUMBER IN CIRCLE INDICATES NUMBER OF CONDUCTORS IN THAT CABLE
  - NUMBER IN PARENTHESIS INDICATES PHASE
  - EXIST. SIGNAL POLE
  - EXIST. MAST ARM



FILE NAME =	USER NAME = brandonja	DESIGNED -	REVISED -
pw:\IL\084EBIDINTEG\illinois.gov\PWIDOT\Documents\IDOT Offices\District 9\Projects\78523\DRAWING\CABsheets\78523-sht.dgn		REVISOR -	REVISED -
Default	PLOT SCALE = 20.0000' / in.	CHECKED -	REVISED -
	PLOT DATE = 3/18/2016	DATE -	REVISED -

**STATE OF ILLINOIS  
DEPARTMENT OF TRANSPORTATION**

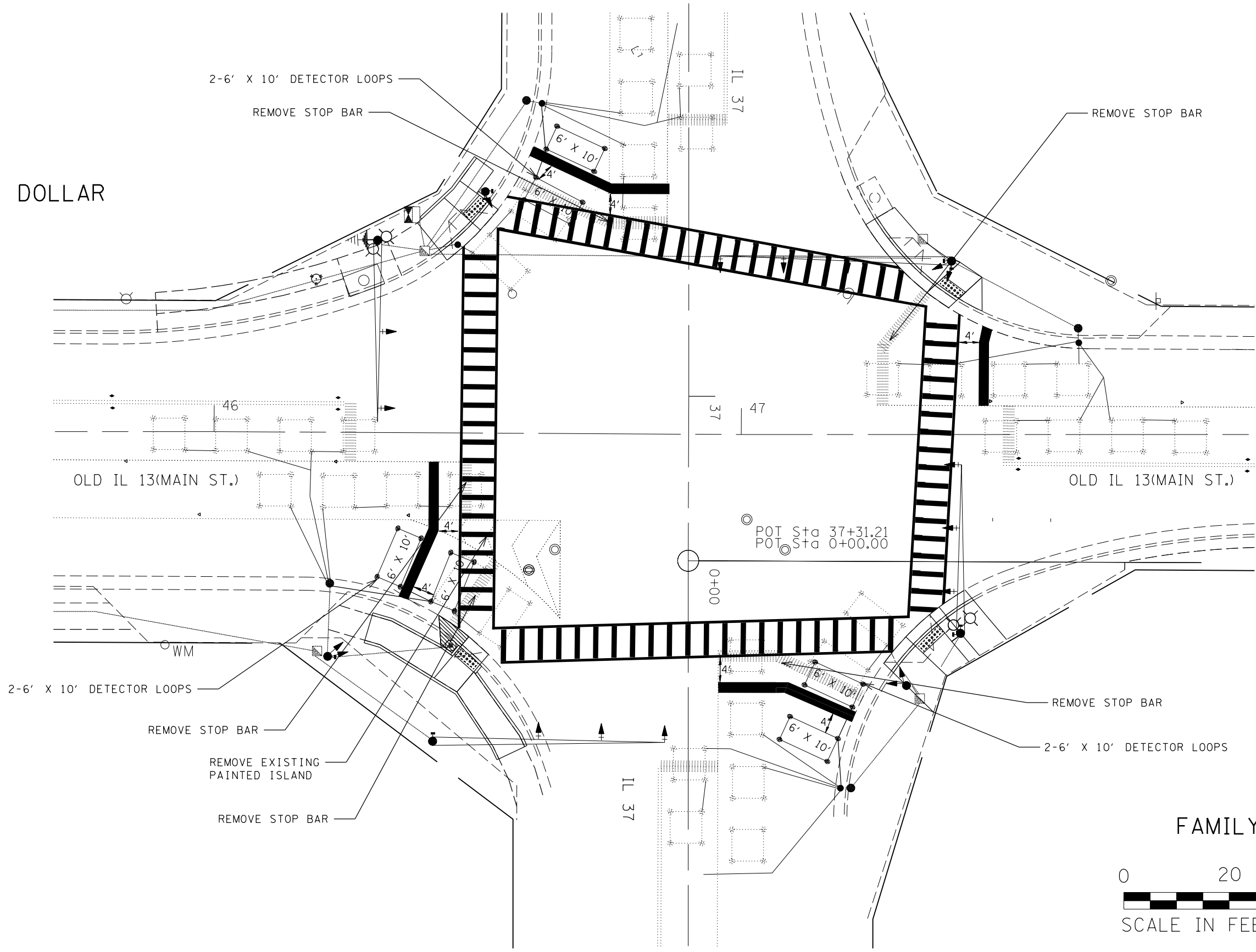
**WIRING DIAGRAM  
LOCATION #1 - OLD IL 13 & IL 37**

SCALE:      SHEET      OF      SHEETS      STA.      TO      STA.

F.A. RTE.	SECTION	COUNTY	TOTAL SHEETS	SHEET NO.
VARIES	D9 ADA RAMP 2016-1	VARIOUS	25	15
			CONTRACT NO. 78523	
ILLINOIS FED. AID PROJECT				



FAMILY DOLLAR



FAMILY VIDEO



FILE NAME =	USER NAME = brandonja	DESIGNED -	REVISED -
pw:\IL\084EBIDINTEG\illinois.gov\PIWIDOT\Documents\IDOT Offices\District 9\Projects\78523\Drawings\CAD\Sheets\78523-sht.dgn		DRAWN -	REVISED -
Default	PLOT SCALE = 20.0000' / in.	CHECKED -	REVISED -
	PLOT DATE = 3/18/2016	DATE -	REVISED -

STATE OF ILLINOIS  
DEPARTMENT OF TRANSPORTATION

DETAIL: PAVEMENT MARKING  
LOCATION #1 - OLD IL 13 & IL 37

SCALE: SHEET OF SHEETS STA. TO STA.

F.A. RTE.	SECTION	COUNTY	TOTAL SHEETS	SHEET NO.
VARIES	D9 ADA RAMP 2016-1	VARIOUS	25	16
			CONTRACT NO. 78523	
ILLINOIS FED. AID PROJECT				





PROP. ACCESSIBLE PEDESTRIAN SIGNAL  
 PROP. PED. PUSH BUTTON POST  
 PROP. CONC. FOUNDATION TY A  
 MATCH EXISTING GROUND ELEV.  
 STA 24+29 LT. 46.63'

PROP. PED. SIGNAL HEAD,  
 POLY., LED, 1-FACE, BRACKET MOUNTED  
 ON TRAFFIC SIGNAL POST, 10 FT.

PROP. CONC. FOUNDATION TY A  
 PROP. TRAFFIC SIGNAL POST, 10FT  
 MATCH EXISTING GROUND ELEVATION  
 STA 24+17 LT. 46.88'

CENTER OF ADA RAMP  
 STA 24+28 LT. 42.49'

PT Sta 23+90.38  
 PC Sta 24+03.84

N. STATE ST. 11

STA 25+10 LT. 55.17'

PROP. PED. SIGNAL HEAD,  
 POLY., LED, 2-FACE, BRACKET MOUNTED  
 ON EXISTING MAST ARM

STA 25+15 LT. 51.66'

PROP. ACCESSIBLE PEDEST  
 PROP. PED. PUSH BUTTON  
 PROP. CONC. FOUNDATION  
 MATCH EXISTING GROUND E  
 STA 25+10 LT. 47.52'

CENTER OF ADA RAMP  
 STA 25+13 LT. 43.18'

STA 25+23 LT. 43.42'

CENTER OF ADA RAMP  
 STA 25+25 LT. 35.88'

PROP. ACCESSIBLE PEDESTRIAN SIGNALS  
 PROP. PED. PUSH BUTTON POST  
 PROP. CONC. FOUNDATION TY A  
 MATCH EXISTING GROUND ELEVATION  
 STA 25+30 LT. 34'

IL 13

10+00

25+00

ROT Sta 10+00.00

26

IL 13

PROP. ACCESSIBLE PEDESTRIAN SIGNAL  
 PROP. PED. PUSH BUTTON POST  
 PROP. CONC. FOUNDATION TY A  
 STA 24+67 RT. 36'

PROP. PED. SIGNAL HEAD,  
 POLY., LED, 1-FACE, BRACKET MOUNTED  
 ON EXISTING MAST ARM

CENTER OF ADA RAMP  
 STA 24+74 RT. 39.67'

REMOVE EXISTING ADA RAMP  
 REPLACE WITH GRASS MEDIAN

FLAG  
 POLE

PROP. ACCESSIBLE PEDESTRIAN SIGNAL  
 PROP. PED. PUSH BUTTON POST  
 PROP. CONC. FOUNDATION TY A  
 MATCH EXISTING GROUND ELEVATION  
 STA 25+46 RT. 39.49'

CENTER OF ADA RAMP  
 STA 25+24 RT. 49.75

PROP. PED. SIGNAL HEAD,  
 POLY., LED, 2-FACE, BRACKET MOUNTED  
 ON EXISTING MAST ARM

PROP. ACCESSIBLE PEDESTRIAN SIGNAL  
 PROP. PED. PUSH BUTTON POST  
 PROP. CONC. FOUNDATION TY A  
 MATCH EXISTING GROUND ELEVATION  
 STA 25+36 RT. 46.75'

INLET TO BE RECONSTRUCTED WITH  
 NEW TYPE 3 FRAME AND GRATE

PI Sta 25+01.00

N. STATE ST.



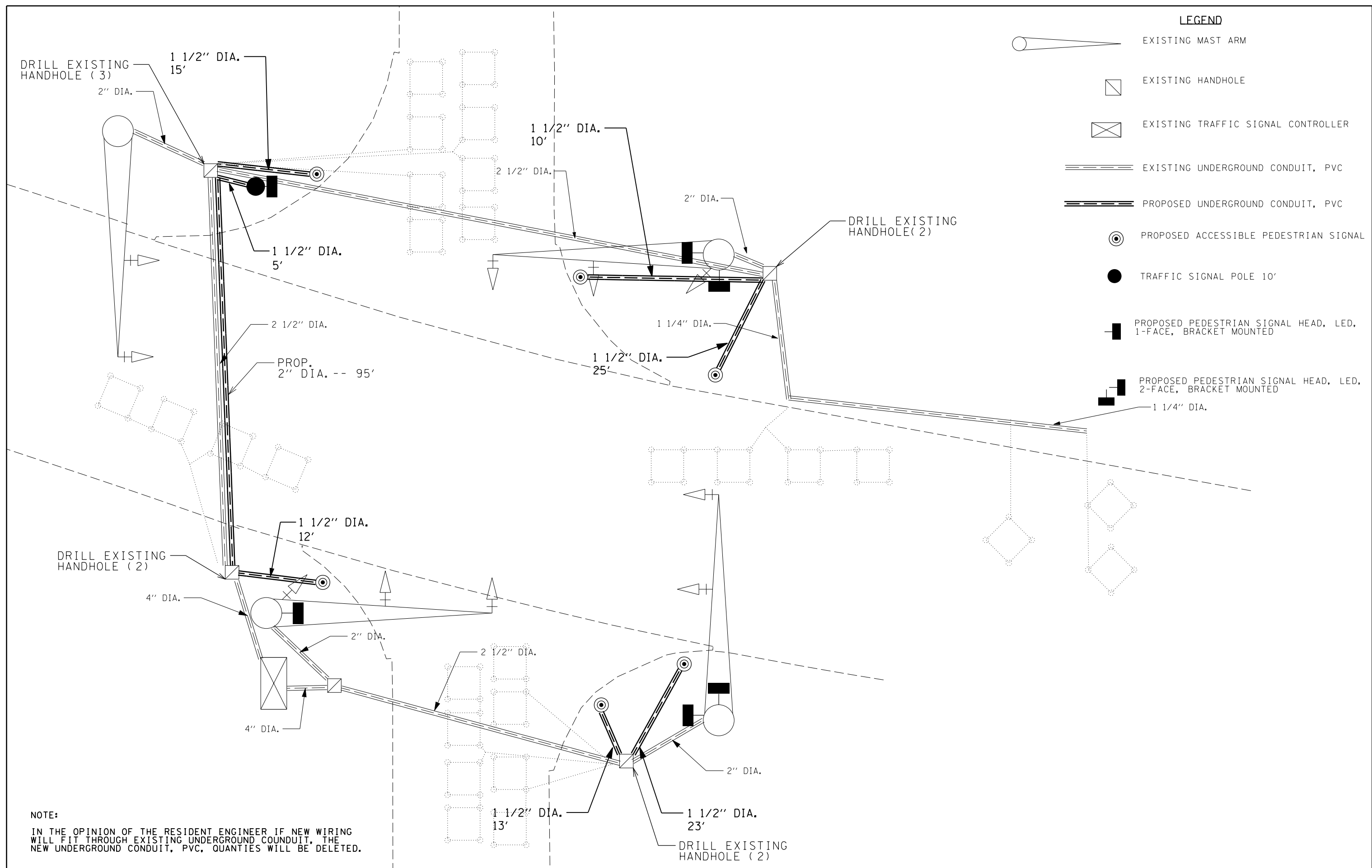
FILE NAME =	USER NAME = brandonja	DESIGNED -	REVISED -
p:\IL\084EBID\INTEG\illinois.gov\PI\DOT\Documents\DOT Offices\District 9\Projects\78523\Drawings\CAD\Sheets\78523-sht.dgn		DRWN	REVISED -
Default	PLOT SCALE = 20.0000' / in.	CHECKED -	REVISED -
	PLOT DATE = 3/18/2016	DATE -	REVISED -

STATE OF ILLINOIS  
 DEPARTMENT OF TRANSPORTATION

PLAN SHEET  
 LOCATION #2 IL 13 & N. STATE ST.

SCALE:	SHEET	OF	SHEETS	STA.	TO	STA.
--------	-------	----	--------	------	----	------

F.A. RTE.	SECTION	COUNTY	TOTAL SHEETS	SHEET NO.
VARIES	D9 ADA RAMP 2016-1	VARIOUS	25	17
CONTRACT NO. 78523				
ILLINOIS FED. AID PROJECT				



**LEGEND**

- EXISTING MAST ARM
- EXISTING HANDHOLE
- EXISTING TRAFFIC SIGNAL CONTROLLER
- EXISTING UNDERGROUND CONDUIT, PVC
- PROPOSED UNDERGROUND CONDUIT, PVC
- PROPOSED ACCESSIBLE PEDESTRIAN SIGNAL
- TRAFFIC SIGNAL POLE 10'
- PROPOSED PEDESTRIAN SIGNAL HEAD, LED, 1-FACE, BRACKET MOUNTED
- PROPOSED PEDESTRIAN SIGNAL HEAD, LED, 2-FACE, BRACKET MOUNTED

DRILL EXISTING HANDHOLE (3)  
2" DIA.

1 1/2" DIA.  
15'

1 1/2" DIA.  
10'

2 1/2" DIA.

2" DIA.

DRILL EXISTING HANDHOLE (2)

1 1/2" DIA.  
5'

2 1/2" DIA.

PROP.  
2" DIA. -- 95'

1 1/2" DIA.  
25'

1 1/4" DIA.

1 1/4" DIA.

DRILL EXISTING HANDHOLE (2)  
4" DIA.

1 1/2" DIA.  
12'

2" DIA.

4" DIA.

2 1/2" DIA.

2" DIA.

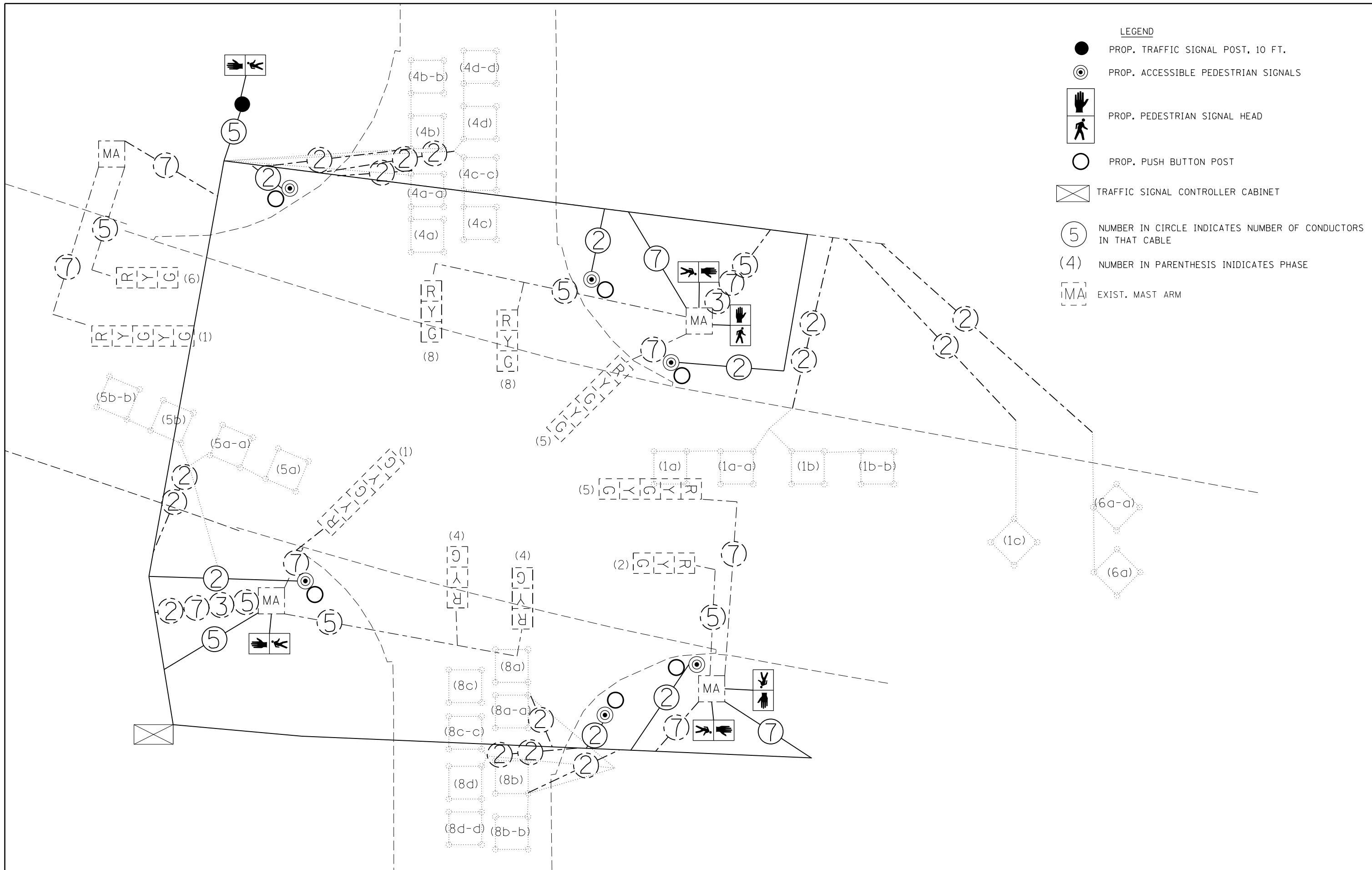
1 1/2" DIA.  
13'

1 1/2" DIA.  
23'

DRILL EXISTING HANDHOLE (2)

**NOTE:**  
IN THE OPINION OF THE RESIDENT ENGINEER IF NEW WIRING WILL FIT THROUGH EXISTING UNDERGROUND CONDUIT, THE NEW UNDERGROUND CONDUIT, PVC, QUANTITIES WILL BE DELETED.

FILE NAME =	USER NAME = brandonja	DESIGNED -	REVISED -	<b>STATE OF ILLINOIS DEPARTMENT OF TRANSPORTATION</b>	<b>EXISTING AND PROPOSED TRAFFIC SIGNALS LOCATION #2 - IL 13 AND N. STATE ST.</b>	F.A. RTE.	SECTION	COUNTY	TOTAL SHEETS	SHEET NO.	
pw:\11\084EBIDINTEG\illinois.gov\PIDOT\Documents\IDOT Offices\District 9\Projects\78523\Drawings\CABsheets\78523-sht.dgn		CHECKED -	REVISED -			VARIES	D9 ADA RAMP 2016-1	VARIOUS	25	18	
Default	PLOT SCALE = 20.0000' / in.	DATE -	REVISED -			CONTRACT NO. 78523					
	PLOT DATE = 3/18/2016					SCALE:	SHEET	OF	SHEETS	STA.	TO



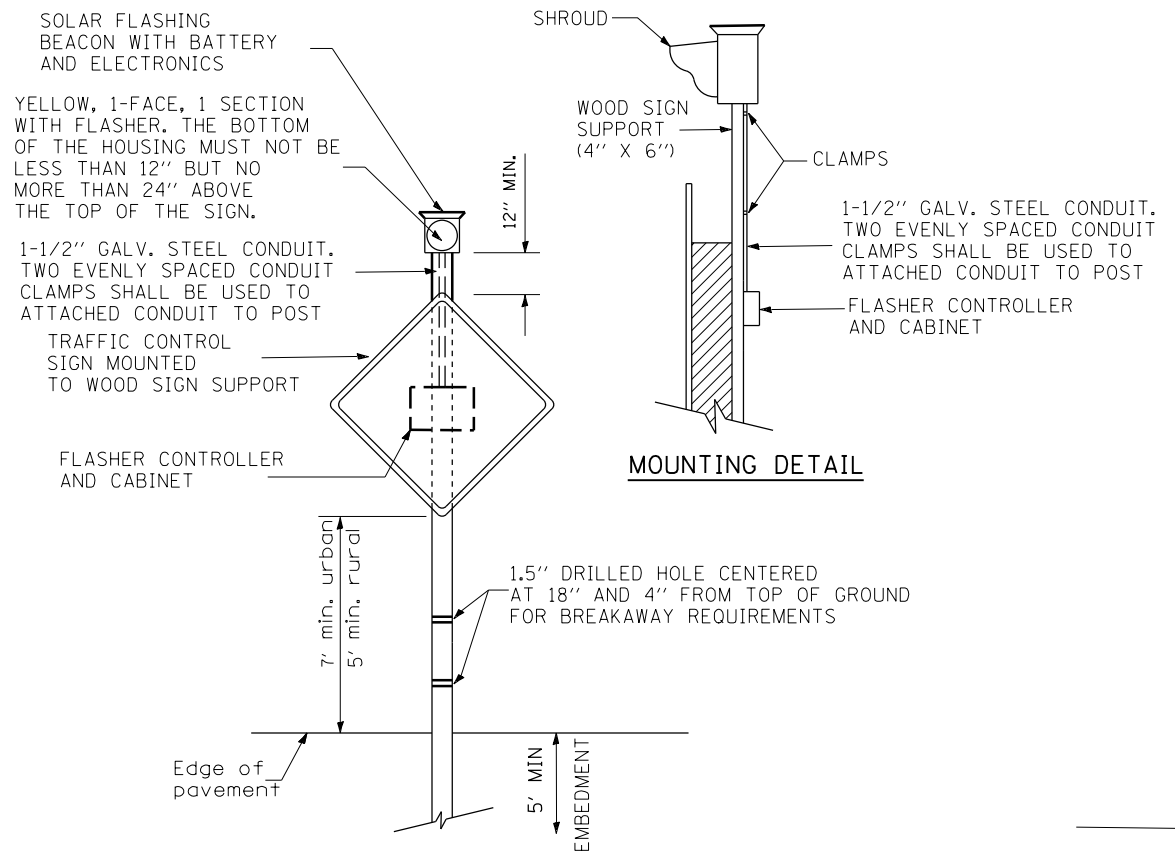
- LEGEND**
- PROP. TRAFFIC SIGNAL POST, 10 FT.
  - ⊙ PROP. ACCESSIBLE PEDESTRIAN SIGNALS
  - ⊠ PROP. PEDESTRIAN SIGNAL HEAD
  - PROP. PUSH BUTTON POST
  - ⊠ TRAFFIC SIGNAL CONTROLLER CABINET
  - ⑤ NUMBER IN CIRCLE INDICATES NUMBER OF CONDUCTORS IN THAT CABLE
  - (4) NUMBER IN PARENTHESIS INDICATES PHASE
  - MA EXIST. MAST ARM

FILE NAME =	USER NAME = brandonja	DESIGNED -	REVISED -
p:\IL\084EBIDINTEG\illinois.gov\PIWIDOT\Documents\IDOT Offices\District 9\Projects\78523\Drawings\CADsheets\78523-sht.dgn		DRAWN -	REVISED -
Default	PLOT SCALE = 20.0000' / in.	CHECKED -	REVISED -
	PLOT DATE = 3/18/2016	DATE -	REVISED -

**STATE OF ILLINOIS  
DEPARTMENT OF TRANSPORTATION**

<b>WIRING DIAGRAM</b>			
<b>LOCATION #2 - IL 13 &amp; N. STATE ST.</b>			
SCALE:	SHEET	OF SHEETS	STA. TO STA.

F.A. RTE.	SECTION	COUNTY	TOTAL SHEETS	SHEET NO.
VARIES	D9 ADA RAMP 2016-1	VARIOUS	25	19
CONTRACT NO. 78523				
ILLINOIS FED. AID PROJECT				



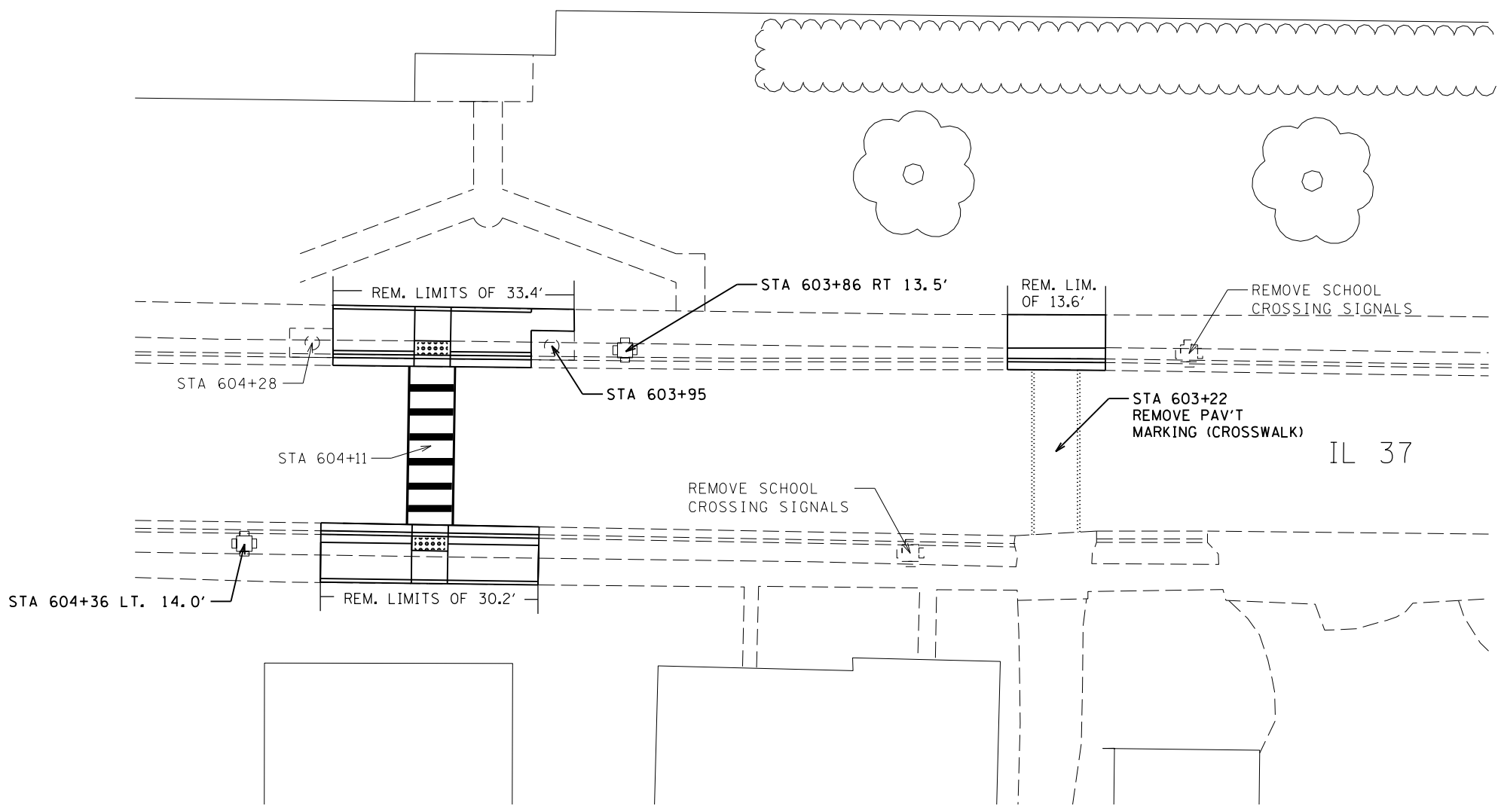
**SOLAR-POWERED FLASHER/POST MOUNTED (YELLOW LED DISPLAY)**

STA 603+86 RT 13.5'  
STA 604+36 LT 14.0'

Note:  
TIE NEW SIDEWALK TO INLETS  
WITH 3/4" TIE BARS AT 18" CTS.



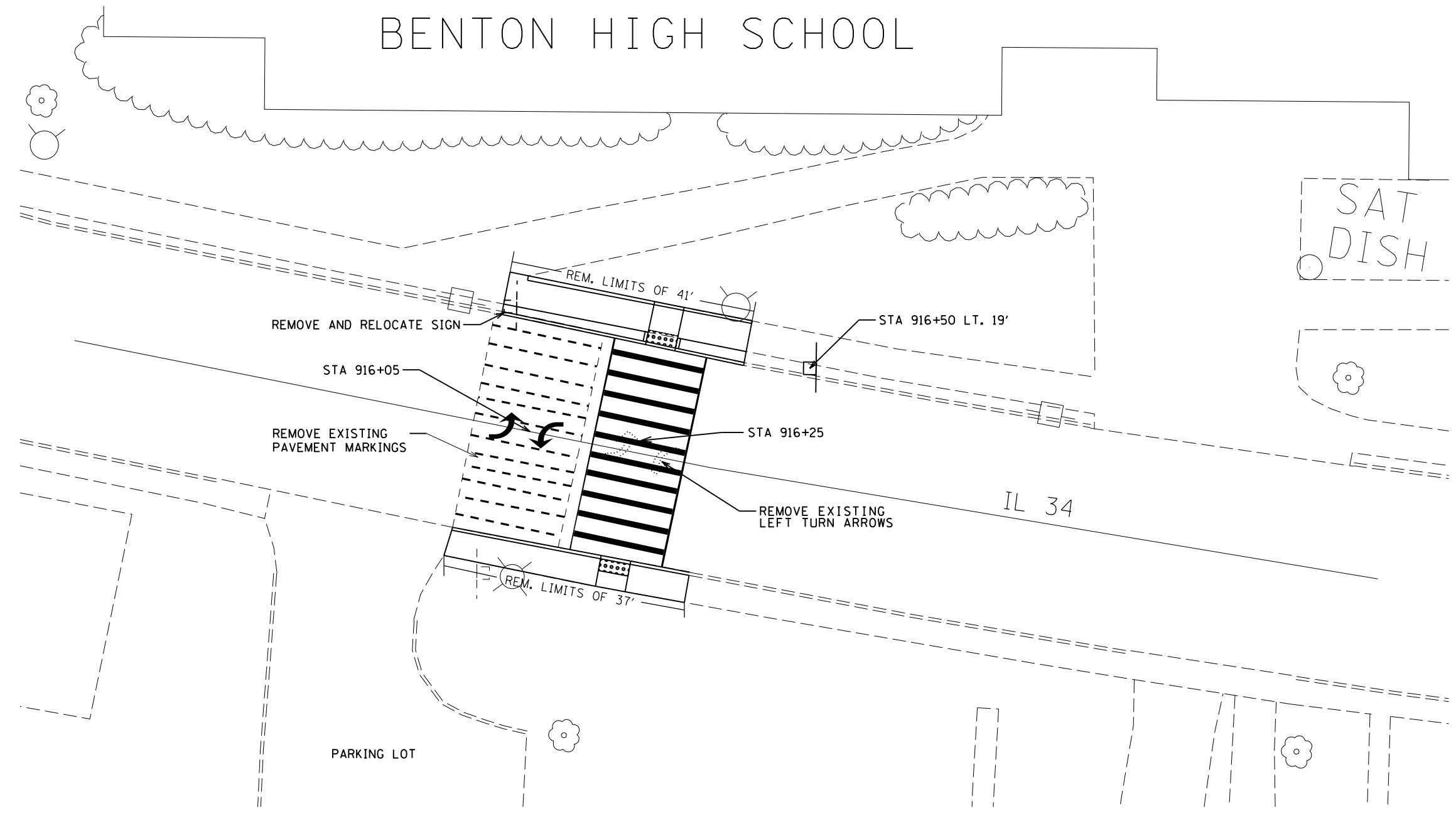
# JEFFERSON ELEMENTARY SCHOOL



FILE NAME =	USER NAME = brandonja	DESIGNED -	REVISED -	<b>STATE OF ILLINOIS DEPARTMENT OF TRANSPORTATION</b>	<b>PLAN SHEET LOCATION 3 - IL 37 - JOHNSTON CITY</b>	F.A. RTE.	SECTION	COUNTY	TOTAL SHEETS	SHEET NO.	
pw:\IL\084EBIDINTEG\Illinois.gov\PWIDOT\Documents\IDOT Offices\District 9\Projects\78523\Drawings\CAD\Drawings\78523-sht.dgn	DATE = 3/18/2016	CHECKED -	REVISED -			VAR.	D9 ADA RAMP 2016-1	VARIOUS	25	20	
Default		DATE -	REVISED -			CONTRACT NO. 78523					
						ILLINOIS FED. AID PROJECT					



# BENTON HIGH SCHOOL



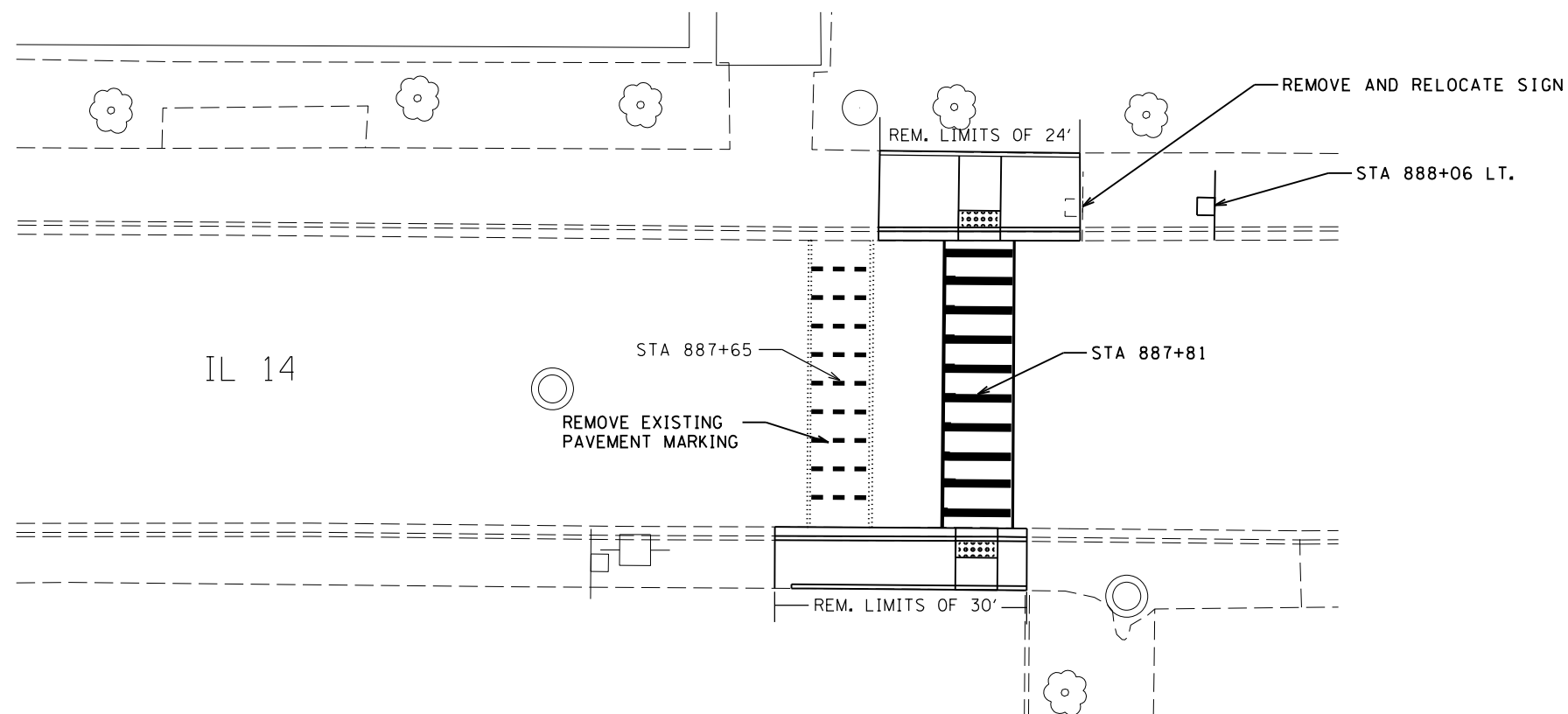
NOTE:  
 GUTTER DRAINS RUN UNDER SIDEWALK  
 IF ANY DAMAGE OCCURS TO DRAINS  
 IT WILL BE AT THE EXPENSE OF THE  
 CONTRACTOR TO FIX THE DRAINS



FILE NAME =	USER NAME = brandonja	DESIGNED -	REVISED -	<b>STATE OF ILLINOIS DEPARTMENT OF TRANSPORTATION</b>	<b>PLAN SHEET</b>		F.A. RTE.	SECTION	COUNTY	TOTAL SHEETS	SHEET NO.	
p:\11\084EBIDINTEG\illinois.gov\PI\DOT\Documents\IDOT Offices\District 9\Projects\78523\Drawings\CAD\Sheets\78523-sht.dgn		DRAWN -	REVISED -		<b>LOCATION 4 - IL 34 - BENTON HIGH SCHOOL</b>		VAR.	D9 ADA RAMP 2016-1	VARIOUS	25	21	
Default		PLOT SCALE = 20.0000' / in.	CHECKED -		REVISED -	SCALE:	SHEET	OF	SHEETS	STA.	TO STA.	CONTRACT NO. 78523
		PLOT DATE = 3/18/2016	DATE -		REVISED -	ILLINOIS FED. AID PROJECT						



# FEDERAL COURTHOUSE



FILE NAME =	USER NAME = brandonja	DESIGNED -	REVISED -
p:\1\IL084EBIDINTEG\Illinois.gov\PWIDOT\Documents\IDOT Offices\District 9\Projects\78523\DRAWING\CAD\Sheets\78523-sht.dgn		CHECKED -	REVISED -
Default	PLOT SCALE = 20.0000' / in.	DATE -	REVISED -
	PLOT DATE = 3/18/2016		

**STATE OF ILLINOIS  
DEPARTMENT OF TRANSPORTATION**

**PLAN SHEET  
LOCATION 5 - IL 14 - FEDERAL BUILDING**

SCALE: SHEET OF SHEETS STA. TO STA.

F.A. RTE.	SECTION	COUNTY	TOTAL SHEETS	SHEET NO.
VAR.	D9 ADA RAMP 2016-1	VARIOUS	25	22
			CONTRACT NO. 78523	
ILLINOIS FED. AID PROJECT				

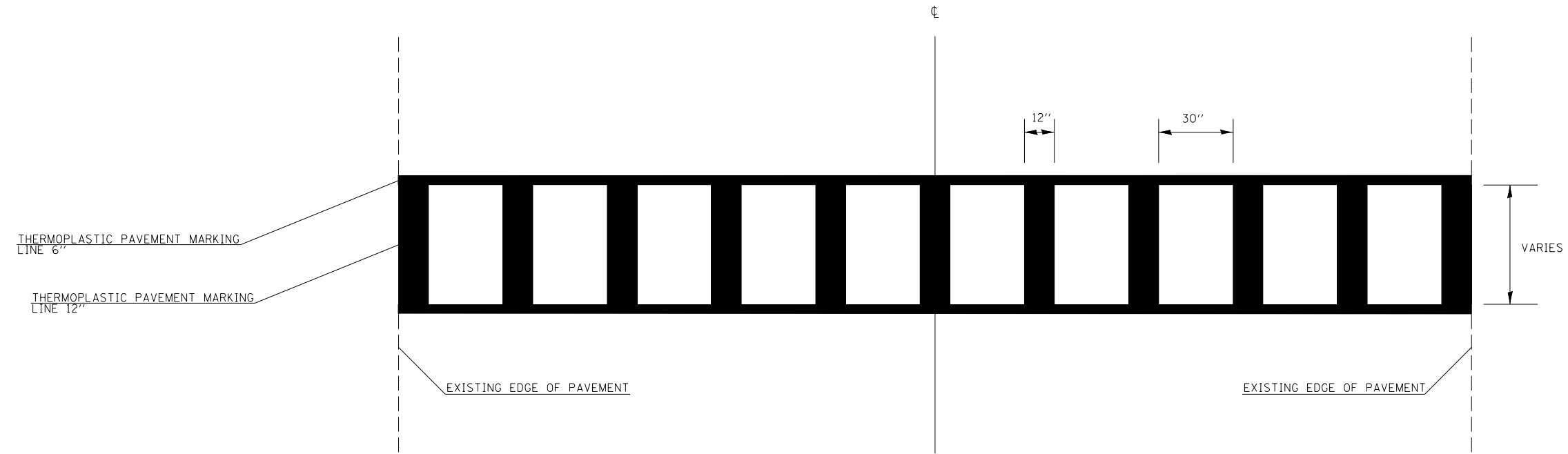
**DROP-OFF PROTECTION BETWEEN TRAVEL LANE  
AND SHOULDER / EDGE OF PAVEMENT  
FIG 55.2B FROM CHAPTER 55 (BDE MANUAL, 2010)**

DROP-OFF LOCATION	NORMAL POSTED SPEED	DROP-OFF HEIGHT (X) AND TYPE	TREATMENT REQUIRED
≤ 3 FT <sup>(1)(2)</sup>	ALL	≤ 1 IN	NONE
		1 IN < X ≤ 3 IN	LOW SHOULDER SIGNS (2 MILE SPACING)
	< 45 MPH	3 IN < X ≤ 18 IN	PLACE CHANNELIZING DEVICES AT 50-FT SPACING
	≥ 45 MPH	3 IN < X ≤ 12 IN	PLACE CHANNELIZING DEVICES AT 100-FT SPACING
	< 45 MPH	18 IN < X ≤ 24 IN	PLACE CHANNELIZING DEVICES AT 50-FT SPACING
		FOR < 0.5 MILE OR < 48 HOURS <sup>(4)</sup>	
	≥ 45 MPH	12 IN < X ≤ 18 IN	PLACE CHANNELIZING DEVICES AT 100-FT SPACING
		FOR < 0.5 MILE OR < 48 HOURS	
	≥ 45 MPH	12 IN < X ≤ 24 IN	CLOSURE USING TEMPORARY TRAFFIC BARRIER
< 45 MPH	18 IN < X ≤ 24 IN <sup>(3)</sup>	CLOSURE USING TEMPORARY TRAFFIC BARRIER	
≥ 45 MPH	18 IN < X ≤ 24 IN FOR < 0.5 MILES OR < 48 HOURS <sup>(5)</sup>	CLOSURE USING TEMPORARY TRAFFIC BARRIER	
ALL	> 24 IN <sup>(5)</sup>	CLOSURE USING TEMPORARY TRAFFIC BARRIER	
3 FT < X ≤ 8 FT <sup>(3)</sup>	ALL	≤ 1 IN	NONE
		1 IN < X ≤ 3 IN	LOW SHOULDER SIGNS (2 MILE SPACING)
	< 45 MPH	3 IN < X ≤ 24 IN <sup>(4)</sup>	PLACE CHANNELIZING DEVICES AT 50-FT SPACING
	≥ 45 MPH	3 IN < X ≤ 24 IN	PLACE CHANNELIZING DEVICES AT 100-FT SPACING
ALL	24 IN <sup>(5)</sup>	CLOSURE USING TEMPORARY TRAFFIC BARRIER	
> 8 FOOT TO THE WORK ZONE CLEAR ZONE <sup>(3)</sup>	< 45 MPH	12 IN < X ≤ 24 IN <sup>(4)</sup>	PLACE CHANNELIZING DEVICES AT 50-FT SPACING
	≥ 45 MPH	12 IN < X ≤ 24 IN	PLACE CHANNELIZING DEVICES AT 100-FT SPACING
	ALL	> 24 IN <sup>(5)</sup>	CLOSURE USING TEMPORARY TRAFFIC BARRIER

**NOTES:**

- <sup>(1)</sup> PLACE CHANNELIZING DEVICES AND/OR TEMPORARY BARRIER AT THE SAME LEVEL AS THE TRAVELING LANE OR SHOULDER PROFILE
- <sup>(2)</sup> CHANNELIZING DEVICES MAY BE PLACED AT THE DROP-OFF ELEVATION TO PRESERVE LANE WIDTH. RAISE THE REFLECTIVE AREA AND WARNING LIGHT (IF REQUIRED) TO THE ELEVATION ABOVE THE TRAVELING LANE OR SHOULDER PROFILE AS PER **HIGHWAY STANDARD 701901**.
- <sup>(3)</sup> PLACE CHANNELIZING DEVICES OR TEMPORARY BARRIER AT SAME LEVEL AS THE SIDE SLOPE PROFILE TO BE FULLY VISIBLE.
- <sup>(4)</sup> LENGTH AND DURATION MAY BE EXCEEDED FOR URBAN AREAS WHEN ENGINEERING JUDGEMENT INDICATES SIGHT DISTANCE WILL BE ADVERSELY AFFECTED BY TEMPORARY BARRIER.
- <sup>(5)</sup> TEMPORARY TRAFFIC BARRIER MAY BE ELIMINATED FOR STATIONARY OPERATIONS OF LESS THAN 24 HOURS FOR MULTILANE, AND MAY BE ELIMINATED FOR STATIONARY OPERATIONS OF LESS THAN 96 HOURS PER STAGE FOR TWO LANES, BASED ON ENGINEERING JUDGEMENT.

CROSSWALK PAVEMENT MARKING DETAIL



- LOCATION
- LOCATION #1-6'
  - LOCATION #2-6'
  - LOCATION #3-6'
  - LOCATION #4-15'
  - LOCATION #5-8'

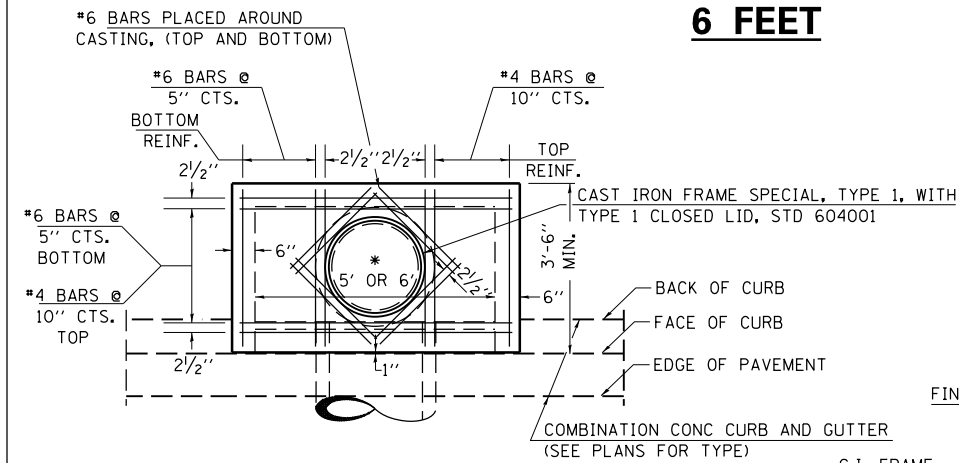
FILE NAME =	USER NAME = brandonja	DESIGNED -	REVISED -	<b>STATE OF ILLINOIS DEPARTMENT OF TRANSPORTATION</b>	<b>CROSSWALK PAVEMENT MARKING DETAIL</b>	F.A. RTE.	SECTION	COUNTY	TOTAL SHEETS	SHEET NO.	
p:\11\084EBIDINTEG.illinois.gov\PIWIDOT\Documents\IDOT Offices\District 9\Projects\78523\Drawings\CAD\Sheets\78523-sht.dgn	3/18/2016	CHECKED -	REVISED -			D9 ADA RAMP 2016-1	VARIOUS	25	24		
Default	PLOT SCALE = 100.0000' / in.	DATE -	REVISED -			CONTRACT NO. 78523		ILLINOIS FED. AID PROJECT			
	PLOT DATE = 3/18/2016					SCALE:	SHEET OF SHEETS	STA. TO STA.			



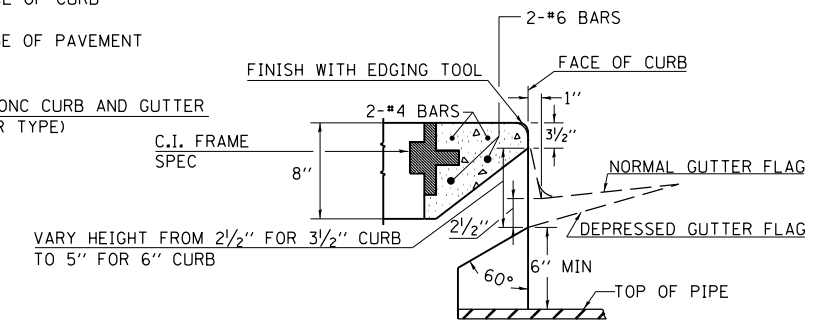
# DETAILS OF INLET SPECIAL, TYPE 3, 6 FEET

"D" TABLE

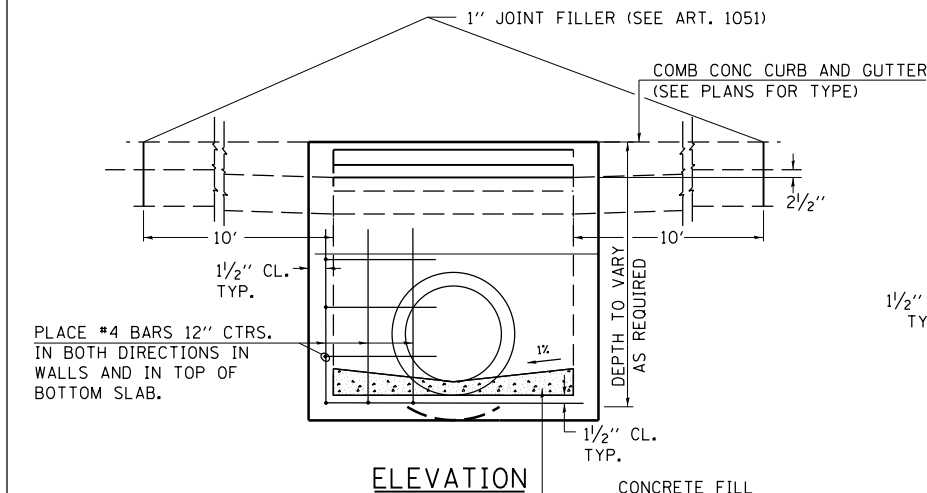
DESIGN	PIPE DIA	"D"
A	18" & LESS	2'-6"
B	21" & 24"	3'-0"
C	27" & 30"	3'-7"
D	33" & 36"	4'-2"
E	42"	4'-9"
F	48"	5'-0"
G	54"	6'-1"



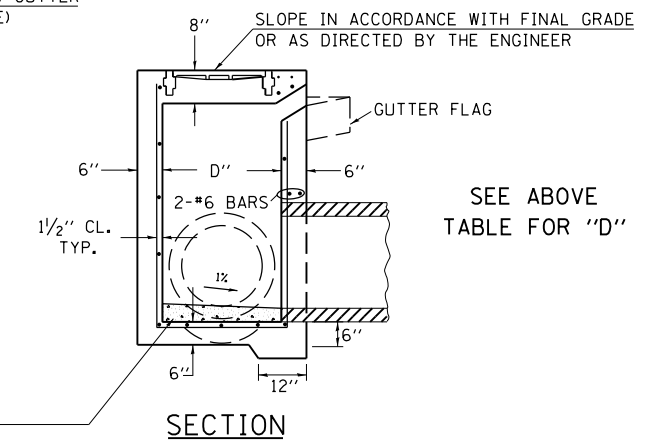
PLAN



SECTION AT WEIR



ELEVATION



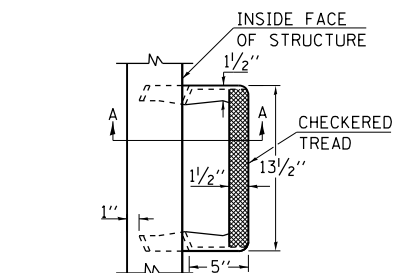
SECTION

**NOTES:**

PROVIDE 1/2" CLEARANCE TYP. ALL REINFORCEMENT UNLESS OTHERWISE SPECIFIED.

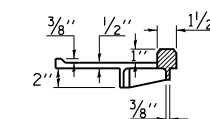
INLETS WILL BE PAID FOR AT THE CONTRACT UNIT PRICE EACH FOR INLETS TO BE RECONSTRUCTED WITH NEW TYPE 3 FRAME AND GRATE WHICH PRICE SHALL INCLUDE THE CAST IRON FRAME, SPECIAL, TYPE 1 WITH TYPE 1 CLOSED LID, THE REINFORCEMENT BARS, METAL STEPS AND JOINT FILLER.

CONCRETE FILL (UP TO 4% SLOPE IF NO SIDE PIPES ENTER OR EXIT BOX)



\*\* CAST IRON STEPS

TREAD DIMENSION DETAILS SEE HWY STD 602701



\*\* GALVANIZED IRON STEPS

1" ROUND GALVANIZED IRON STEPS 12" O.C. (OPTIONAL STEPS)

SEC. A-A

FILE NAME =	USER NAME = brandon.ja	DESIGNED -	REVISED -
pw:\11\084EBIDINTEG.illinois.gov\PIWIDOT\Documents\DOT Offices\District 9\Projects\78523\Drawings\CAD\Sheets\78523-sht.dgn		DRAWN -	REVISED -
Default	PLOT SCALE = 100.0000' / 1"	CHECKED -	REVISED -
	PLOT DATE = 3/18/2016	DATE -	REVISED -

**STATE OF ILLINOIS  
DEPARTMENT OF TRANSPORTATION**

**DETAIL: INLETS TO BE RECONSTRUCTED WITH  
NEW TYPE 3 AND FRAME AND GRATE**

SCALE: SHEET OF SHEETS STA. TO STA.

STD. 9-1		REVISIONS	
REDRAWN	2-15-89	REVISED	3-26-08
REVISED	8-15-94	REVISED	4-10-13
REVISED	1-19-99	REVISED	
REVISED	5-6-04	REVISED	
F.A. RTE.	SECTION	COUNTY	TOTAL SHEETS
VAR.	D9 ADA RAMP 2016-1	VARIOUS	25
			SHEET NO. 25
CONTRACT NO. 78523			
ILLINOIS FED. AID PROJECT			