

STATE OF ILLINOIS
DEPARTMENT OF TRANSPORTATION
DIVISION OF HIGHWAYS

**PROPOSED
HIGHWAY PLANS**

VARIOUS ROUTES
SECTION D8 TRAFFIC SIGNAL REPLACE 2016-1
PROJECT ACHSIP-000V(074)
TRAFFIC SIGNAL MODERNIZATION
VARIOUS COUNTIES

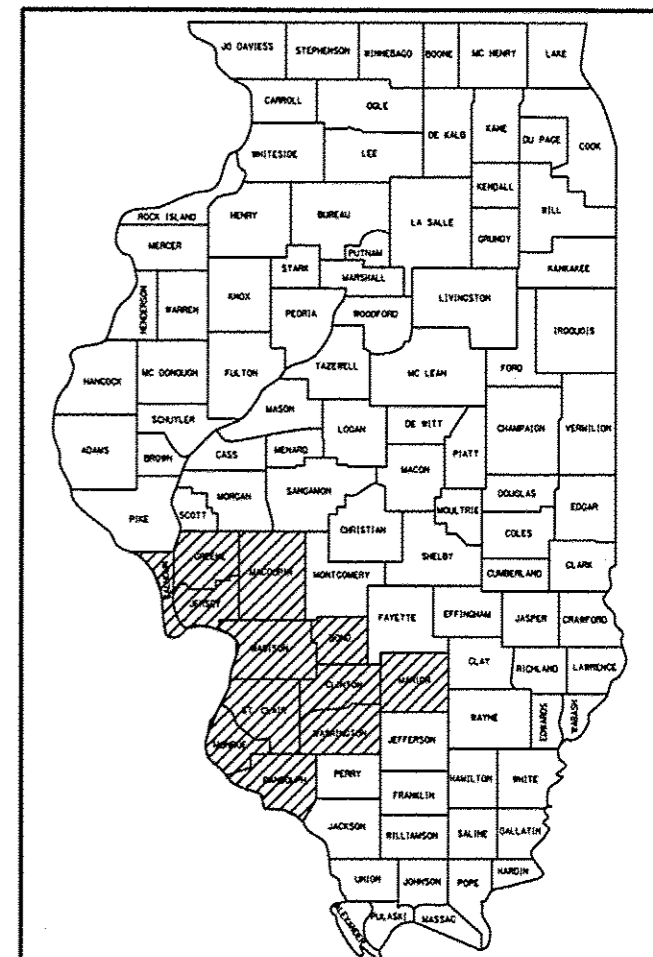
C-98-036-16

FOR INDEX OF SHEETS, SEE SHEET NO. 2

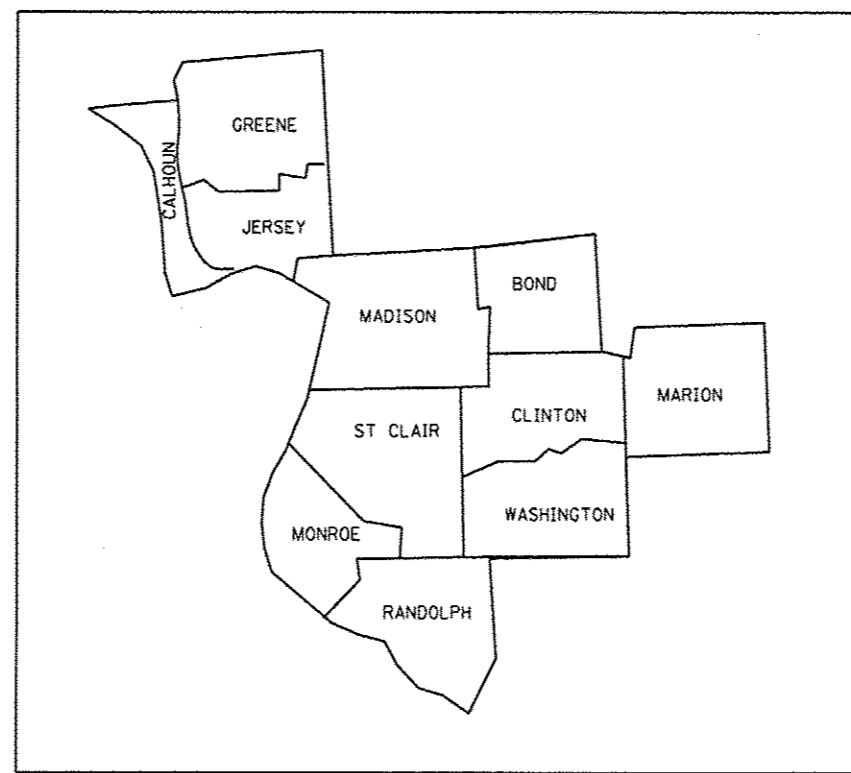
F.A. R.T.E.	SECTION	COUNTY	TOTAL SHEETS	SHEET NO.
VAR	*	ILLINOIS	8	1
			CONTRACT NO. 76J57	

*DB TRAFFIC SIGNAL REPLACE 2016-1

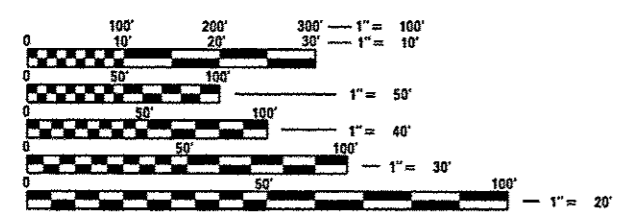
D-98-042-16



LOCATION OF SECTION INDICATED THUS: [shaded box symbol]



NOT TO SCALE



FULL SIZE PLANS HAVE BEEN PREPARED USING STANDARD ENGINEERING SCALES. REDUCED SIZED PLANS WILL NOT CONFORM TO STANDARD SCALES. IN MAKING MEASUREMENTS ON REDUCED PLANS, THE ABOVE SCALES MAY BE USED.

J.U.L.I.E.
JOINT UTILITY LOCATION INFORMATION FOR EXCAVATION
1-800-892-0123
OR 811

PROJECT ENGINEER: HERVE GELIN (618) 346-3179
SQUAD LEADER: CECIL DOWNING (618) 346-3186

CONTRACT NO. 76J57

NOTE: WORK CAN BE LOCATED WITHIN ANY OF THE ABOVE NOTED COUNTIES WITHIN DISTRICT 8 / REGION 5.

STATE OF ILLINOIS
DEPARTMENT OF TRANSPORTATION
DIVISION OF HIGHWAYS

SUBMITTED *April 11 2016*

Jeffrey Z. K...
REGIONAL 5 ENGINEER

Maureen M. Addis, P.E.
ENGINEER OF DESIGN AND ENVIRONMENT

Osman, P.E.
DIRECTOR OF HIGHWAYS, CHIEF ENGINEER

PRINTED BY THE AUTHORITY
OF THE STATE OF ILLINOIS

INDEX OF SHEETS

1. COVER SHEET
2. INDEX OF SHEETS, GENERAL NOTES, COMMITMENTS, AND HIGHWAY STANDARDS
3. SUMMARY OF QUANTITIES
- 4.-8. SCHEDULES

HIGHWAY STANDARDS

000001-06	STANDARD SYMBOLS, ABBREVIATIONS AND PATTERNS
001006	DECIMAL OF AN INCH AND OF A FOOT
701006-05	OFF-RD OPERATIONS, 2L, 2W, 15' (4.5 m) TO 24" (600 mm) FROM PAVEMENT EDGE
701101-05	OFF-RD OPERATIONS, MULTILANE, 15' (4.5 m) TO 24" (600 mm) FROM PAVEMENT EDGE
701201-04	LANE CLOSURE, 2L, 2W, DAY ONLY, FOR SPEEDS \geq 45 MPH
701422-08	LANE CLOSURE, MULTILANE, FOR SPEEDS \geq 45 MPH TO 55 MPH
701426-08	LANE CLOSURE, MULTILANE, INTERMITTENT OR MOVING OPERATIONS, FOR SPEEDS \geq 45 MPH
701427-04	LANE CLOSURE, MULTILANE, INTERMITTENT OR MOVING OPERATIONS, FOR SPEEDS \geq 40 MPH
701501-06	URBAN LANE CLOSURE, 2L, 2W, UNDIVIDED
701601-09	URBAN LANE CLOSURE, MULTILANE, 1W OR 2W WITH NONTRAVERSABLE MEDIAN
701602-07	URBAN LANE CLOSURE, MULTILANE, 2W WITH BI-DIRECTIONAL LEFT TURN LANE
701701-10	URBAN LANE CLOSURE, MULTILANE INTERSECTION
701901-05	TRAFFIC CONTROL DEVICES

COMMITMENTS

NONE

GENERAL NOTES

1. ILLINOIS STATE LAW REQUIRES A 48-HOUR NOTICE TO BE GIVEN TO UTILITIES BEFORE DIGGING. FIELD MARKING OF FACILITIES MAY BE OBTAINED BY CONTACTING J.U.L.I.E. (1-800-892-0123 OR 811) OR FOR NON-MEMBERS, THE UTILITY COMPANY DIRECTLY.
2. THE CONTRACTOR SHALL VERIFY QUANTITIES AND SIZES PRIOR TO ORDERING OF MATERIALS.
3. THE EXISTING TRAFFIC SIGNALS SHALL REMAIN IN OPERATION OR ON FLASH DURING THE CONSTRUCTION OF THE PROPOSED TRAFFIC SIGNAL MODIFICATIONS.
4. THE CONTRACTOR SHALL INSTALL A COMMERCIALY AVAILABLE SPLIT BACKPLATE WHEN INSTALLING A NEW BACKPLATE ON AN EXISTING SIGNAL HEAD. THE BACKPLATE SHALL BE SECURED TO THE EXISTING SIGNAL HEAD WITH A SUFFICIENT NUMBER OF SCREWS TO PREVENT FAILURE FROM WIND LOADING.
5. ALL CONSTRUCTION SIGNS SHALL BE 48" X 48" FLUORESCENT ORANGE.
6. PEAK HOUR RESTRICTIONS AS OUTLINED IN THE SPECIAL PROVISIONS SHALL APPLY TO THIS PROJECT.
7. THE DEPARTMENT STRONGLY ENCOURAGES THE PRIME CONTRACTOR AND THEIR APPROVED SUB-CONTRACTORS TO HIRE MINORITY, WOMEN AND DISADVANTAGED INDIVIDUALS FROM ITS FEDERALLY FUNDED HIGHWAY CONSTRUCTION CAREERS TRAINING PROGRAM (HCCTP) TO HELP MEET WORKFORCE AND TRAINEE GOALS. THIS PROGRAM IS TRAINING MINORITIES, WOMEN AND DISADVANTAGED INDIVIDUALS IN HIGHWAY CONSTRUCTION-RELATED SKILLS, E.G., MATH FOR THE TRADES, JOB READINESS, TECHNICAL SKILLS COURSE WORK (CARPENTRY, CONCRETE FLATWORK, BLUEPRINT READING, SITE PLANS, SITE WORK, TOOLS USE, ETC.) AND OSHA 10 HOUR CERTIFICATION, TO PREPARE THEM FOR A CAREER IN THE HIGHWAY CONSTRUCTION TRADES. GRADUATES ARE WELL- TRAINED AND READY TO BECOME PRODUCTIVE ENTRY-LEVEL CONSTRUCTION WORKERS. CONTACT THE DISTRICT 8 EEO OFFICE AT 618-346-3360 AND/OR THE HCCTP COORDINATOR AT 618-874-6528 TO LEARN MORE ABOUT THE PROGRAM AND FOR ASSISTANCE IN MEETING WORKFORCE AND TRAINEE GOALS.

*08 TRAFFIC SIGNAL REPLACE 2016-1

FILE NAME :	USER NAME :	DESIGNED :	REVISED :	STATE OF ILLINOIS DEPARTMENT OF TRANSPORTATION	INDEX OF SHEETS, GENERAL NOTES, COMMITMENTS & HIGHWAY STANDARDS	F.A. RTE.	SECTION	COUNTY	TOTAL SHEETS	SHEET NO.
p:\11.08\EBID\INTEG\Illinois.gov\PI00T\Documents\DOT Offices\District 8\Projects\007-DRAWING\DATA\0876J57-shr-plan.dwg	mloisomr	REVISION	REVISION			VAR	*	VARIOUS	8	2
Default	Default	CHECKED :	REVISED :			CONTRACT NO. 76J57		ILLINOIS FED. AID PROJECT		
		DATE :	REVISED :			SCALE:	SHEET OF SHEETS	STA. TO STA.		

TRAFFIC SIGNAL BACKPLATE, RETROFLECTIVE SCHEDULE

INTERSECTION	3 SEC	4 SEC	5 SEC	CITY/AREA
IL 156 & MARKET ST. (LED)	3	1	2	WATERLOO
MARKET & 1ST ST. (LED)	5	2	1	WATERLOO
IL 3 & HH RD./COUNTRY CLUB LANE (LED)	4	2	2	WATERLOO
IL 3 & S. MAIN ST./ GALL RD. (LED)	5	2	2	COLUMBIA
IL 3 & BOTTOM AVE. / WEINEL BLVD.(LED)	8	2	0	COLUMBIA
IL 3 & VALMEYER RD.(LED)	4	0	4	COLUMBIA
IL 3 & VETERAN'S PKWY (LED)	4	2	2	COLUMBIA
IL 3 & N. MAIN ST./SAND BANK RD. (LED)	4	2	2	COLUMBIA
IL 3 & STOLLE RD. (LED)	4	0	4	CAHOKIA- (SOUTH OF)
IL 3 & WATER ST./5TH ST. (LED)	2	0	2	CAHOKIA
IL 3 & IL 157 (LED)	5	0	1	CAHOKIA
IL 3 & JEROME LN. (LED)	3	0	1	CAHOKIA
IL 3 & QUEENY AVE. (LED)	2	0	2	SAUGET
IL 3 & MONSANTO AVE. (LED) (RR)	4	0	4	SAUGET
IL 3 & MISSISSIPPI AVE./8TH ST. (LED)	9	1	1	E. ST. LOUIS
IL 3 & BROADWAY / VENICE (LED)	5	3	0	VENICE
RELOCATED IL 3 & BROADWAY AVE / 2ND STREET, VENICE	6	2	2	VENICE
IL 3 & BISSELL AVE. (RR) (LED)	4	0	0	MADISON
IL 3 & NIEDRINGHAUS AVE. (LED)	8	2	0	GRANITE CITY
IL 3 & 20TH ST. (LED)	2	0	2	GRANITE CITY
IL 3 & ROCK RD. (LED)	10	0	0	GRANITE CITY/TRI CTY
IL 3 & PONTOON RD. (LED)	6	0	2	GRANITE CITY
IL 3 & MISSOURI AVE./GRANITE PARK DR. (LED)	7	2	2	GRANITE CITY
IL 3 & NORTHGATE INDUSTRIAL DR. (LED)	3	0	1	GRANITE CITY
IL 3 & CHAIN OF ROCKS RD. (LED)(VIDEO)	8	1	0	GRANITE CITY- (NORTH
IL 3 & I-270, NORTH JUNCTION (LED)	6	0	0	GRANITE CITY (NORTH
IL 3 & NEW POAG RD. (RR)(LED)	7	1	0	HARTFORD- (SOUTH OF)
IL 3 & PIASA LN. (LED)	6	0	2	HARTFORD
IL 3 & HAWTHORNE ST. (LED)	8	2	0	HARTFORD
IL 3 & IL 143, MAIN JCT. (LED)	9	0	0	WOOD RIVER
IL 3 & IL 143, SOUTH JCT. (LED)	2	0	0	WOOD RIVER
IL 3 & IL 143, WEST JCT. (LED)	2	0	0	WOOD RIVER
IL 3 & OLIN BRASS ENT.	3	0	1	EAST ALTON
IL 3 & ST. LOUIS AVE. (LED)	3	0	1	EAST ALTON
IL 3 & NIAGARA AVE./VIRGINIA AVE. (LED)	8	2	0	EAST ALTON
IL 3 & BROADWAY / ALTON (LED)	4	0	0	ALTON
IL 3 & IL 111, 140 (LED)	10	2	0	ALTON
IL 3, 111 & BLOOMER DR. (LED)	8	2	0	ALTON
IL 3, 111 & SEMINARY RD. (LED)	9	1	0	ALTON
IL 255 & HUMBERT RD., S. JCT. (LED)(VIDEO)	4	0	1	ALTON
IL 255 & HUMBERT RD., N. JCT. (LED)(VIDEO)	4	0	1	ALTON
IL 3, 111 & WASHINGTON AVE./HUMBERT RD. (LED)	12	0	0	ALTON
IL 3, 111 & HUMBERT ST./MORNING STAR DR. (LED)	2	0	2	ALTON
IL 3, 111 & BUCKMASTER RD. (LED)	6	0	4	ALTON
IL 3, 111 & GOLF ROAD (LED)	7	0	4	ALTON
IL 3, 111 & ALTON SQ. MALL DR. (LED)	8	2	0	ALTON
IL 3, 111 & ALBY ST. (LED)	8	2	0	ALTON
IL 3, 111 & GERSON AVE. (LED)	2	0	2	GODFREY

INTERSECTION	3 SEC	4 SEC	5 SEC	CITY/AREA
IL 3, 111 & STATE ST./GODFREY RD. (LED)	8	2	0	GODFREY
IL 3 & ST. AMBROSE LN. (LED)	4	2	2	GODFREY
IL 3 (H. ADAMS PKWY.) & W. DELMAR AVE. (LED)	2	2	0	GODFREY
IL 3 & PIERCE LN./FRONTENAC DR. (LED)	4	1	2	GODFREY
IL 4 & MASONIC DR. (LED)	4	2	2	SPARTA
IL 4 & WALMART ENT. (LED)	4	2	2	SPARTA
IL 4 & IL 161, E. JCT. (LED)	4	0	4	MASCOUTAH
IL 4 & MARYGOLD RD	5	2	1	MARISSA
E. HWY 50 & LINCOLN ST. (LED)	4	0	4	O' FALLON
E. HWY 50 & SMILEY ST. (LED)	2	1	1	O' FALLON
IL 15 (MO. AVE.) & 9TH ST. (LED)	3	0	1	E. ST. LOUIS
IL 15 (MO. AVE.) & 10TH ST. (LED)	3	0	1	E. ST. LOUIS
IL 15 (MO. AVE.) & 13TH ST. (LED)	3	0	1	E. ST. LOUIS
IL 13 & 74TH ST./WESTFIELD PLAZA PKWY. (LED)	8	2	0	BELLEVILLE
IL 13 & WESTFIELD PLAZA SHOPPING CTR. (LED)	5	0	1	BELLEVILLE
IL 13 & N. BELT WEST (LED)	5	0	1	BELLEVILLE
IL 13 & FRANK SCOTT PKWY. WEST (LED)	4	0	4	BELLEVILLE
IL 15 & FRANK SCOTT PKWY. W. N. JCT. (LED)	4	2	2	BELLEVILLE
IL 15 & FRANK SCOTT PKWY. W. S. JCT. (LED)	3	2	1	BELLEVILLE
IL 13 & 17TH STREET (LED)	4	0	4	BELLEVILLE
IL 13 & STATE ST. (LED)	4	2	2	BELLEVILLE
IL 13 & IL 159 (LED)	4	0	4	BELLEVILLE
IL 13 & KEIM RD. (LED)	7	1	0	NEW ATHENS
IL 15 & IL 163/POCKET RD. (LED)	6	2	0	ALORTON
IL 15 & LAKEWOOD PL./RACEHORSE DR. (LED)	4	0	0	ALORTON & CENTREVILLE
IL 15 & SHRINE ENT./DEMAZENOD DR. (LED)	8	2	0	BELLEVILLE- (WEST OF)
IL 15 & 74TH ST./WESTFIELD PLAZA PKWY. (LED)	4	4	0	BELLEVILLE
IL 15 & 17TH STREET / OLIVER C JOSEPH (LED)	4	2	2	BELLEVILLE
IL 15 & 11TH ST. (LED)	8	2	0	BELLEVILLE- (SOUTH OF)
IL 15 & IL 159, S. JCT. (LED)	5	0	1	BELLEVILLE
IL 15 & GREEN MOUNT RD. (LED)	8	2	0	BELLEVILLE- (SE OF)
IL 13/15 & MAIN STREET/OAK BROOK DRIVE (LED)	6	0	2	FREEBURG
IL 15 & APPLE ST. (LED)	5	0	3	FREEBURG
IL 13/15 & MARKET PLACE DRIVE (LED)	5	0	1	FREEBURG
IL 15 & IL 127 (LED)	4	0	4	NASHVILLE
IL 127 & ENTERPRISE AVENUE (LED)	5	2	2	NASHVILLE
IL 127 & MOCKINGBIRD ROAD (LED)	4	2	0	NASHVILLE
15TH ST. & BAUGH AVE. (LED)	8	2	0	E. ST. LOUIS
IL 15 (MO. AVE.) & 15TH ST. (LED)	2	0	2	E. ST. LOUIS
15TH ST. & ST. CLAIR AVE. (LED)	10	2	0	E. ST. LOUIS
IL 16 & US 67 (LED)	4	0	4	JERSEYVILLE
IL 16 & MAPLE SUMMIT RD. (LED)	3	1	0	JERSEYVILLE
N. BELT W. & 17TH ST. (LED)	8	2	0	BELLEVILLE
IL 15 (MO.) & 18TH ST. (LED)	2	0	2	E. ST. LOUIS
25TH ST. & ST. CLAIR AVE. (LED)	4	2	2	E. ST. LOUIS
IL 15 (MO. AVE.) & 26TH ST. (LED)	6	0	2	E. ST. LOUIS
I-255 & HORSESHOE LAKE RD., W. JCT. (LED)	5	0	1	COLLINSVILLE- (WEST
I-255 & HORSESHOE LAKE RD., E. JCT. (LED)	5	0	1	COLLINSVILLE (WEST OF)

*D8 TRAFFIC SIGNAL REPLACE 2016-1

FILE NAME =	USER NAME = milosemr	DESIGNED -	REVISED -	STATE OF ILLINOIS DEPARTMENT OF TRANSPORTATION	SCHEDULES	F.A. RTE.	SECTION	COUNTY	TOTAL SHEETS	SHEET NO.	
pw:\IL084EBIDINTEG.illinois.gov\PIWIDOTDocuments\DOT Offices\District 8\Projects\D876\DRAWINGData\CADsheets\D876J57-sht.pln		CHECKED -	REVISED -			VAR	*	VARIOUS	8	4	
Default		DATE -	REVISED -			CONTRACT NO. 76J57					
						SCALE:	SHEET	OF	SHEETS	STA.	TO

ILLINOIS FED. AID PROJECT

TRAFFIC SIGNAL BACKPLATE, RETROFLECTIVE SCHEDULE

INTERSECTION	3 SEC	4 SEC	5 SEC	CITY/AREA
HORSESHOE LAKE RD. & EASTPORT PLAZA DRIVE (LED)	7	4	4	COLLINSVILLE
37TH / 38TH ST. & ST. CLAIR AVE. (LED)	4	4	0	E. ST. LOUIS
US 40 & FORMOSA RD. (LED)	8	2	0	TROY
US 40 & O'FALLON RD./MAIN ST. (LED)	4	0	4	TROY
US 40 & BETHANY LN / TRIAD HS. (LED)	4	0	4	E. OF TROY
US 40 & MARINE RD./DOUGLAS ST. (RR) (LED)	4	2	2	ST. JACOB
US 40 & IL 143 (LED)	4	0	4	HIGHLAND
IL 143 & NORTHTOWN ENT. / RP LUMBER (LED)	4	0	4	HIGHLAND
US 40 & IL 127 (LED)	4	0	4	GREENVILLE
N. BELT W. & 42ND ST./SHOP N' SAVE (LED)	2	0	2	BELLEVILLE
N. BELT W. & 47TH ST./SCHNUCK'S (LED)	6	0	2	BELLEVILLE
OLD US 50 & GERMANTOWN RD./ MATER DEI DR. (LED)	4	2	2	BREESE
OLD US 50 & WALNUT ST.	4	2	2	BREESE
US 50 & IL 127, S. JCT. (LED)	4	0	4	CARLYLE
US 50 & IL 127, N. JCT. (LED)	5	0	1	CARLYLE
US 50 & ILLINOIS STREET, SALEM	4	0	1	SALEM
US 50 (MAIN) & COLLEGE	4	0	8	SALEM
US 50 (MAIN) & IL 37 (BROADWAY)	4	0	8	SALEM
US 50 (MAIN) & JEFFERSON	8	0	4	SALEM
US 50 (MAIN) & WESTGATE	5	3	4	SALEM
US 50 & SELMAVILLE ROAD	7	0	4	SALEM
US 50 (MAIN) & I-57 EAST JUNCTION	13	0	8	SALEM
US 50 (MAIN) & I-57 WEST JUNCTION	10	0	3	SALEM
IL 37 (BROADWAY) & BOONE	9	0	0	SALEM
US 50 (MAIN) & HOTZE	8	0	8	SALEM
US 50 & IL 158 (LED)	13	0	0	O'FALLON
W. HWY 50 & CASTLE ACRES/AUTO CT. (LED)	4	2	2	O'FALLON
W. HWY 50 & WALMART/DEAN DR. (LED)	4	2	2	O'FALLON
W. HWY 50 & SAM'S/LONG DR. (LED)	5	2	2	O'FALLON
W. HWY 50 & HARTMAN LN. (LED)	7	3	0	O'FALLON
W. HWY 50 & I-64, W. JCT. (LED)	7	0	1	O'FALLON
W. HWY 50 & I-64, E. JCT. (LED)	7	0	0	O'FALLON
W. HWY 50 & VENITA DR./REGENCY PK. (LED)	10	1	2	O'FALLON
I-64 & GREEN MOUNT RD. S. JCT. (LED)	5	0	1	O'FALLON
I-64 & GREEN MOUNT RD. N. JCT. (LED)	6	0	1	O'FALLON
W. HWY 50 & SCHWAEGL/N. GREEN MT. RD. (LED)	4	2	2	O'FALLON
W. HWY 50 & 3RD ST./CAMBRIDGE BLVD. (LED)	4	2	2	O'FALLON
E. HWY. 50 & SCHNUCKS ENTRANCE (LED)	4	2	2	O'FALLON
E. HWY 50 & N. SEVEN HILLS RD./TIMBER CREEK DR. (LED)	4	2	2	O'FALLON
EAST HWY 50 & SHILOH CUT-OFF/MAIN ST (LED)	4	2	2	O'FALLON
FRANK SCOTT PARKWAY. & W. MAIN ST. (LED)	7	0	4	BELLEVILLE
FRANK SCOTT PARKWAY & DAPRON DRIVE (LED)	7	1	2	BELLEVILLE
N. BELT W. & FRANK SCOTT PKWY. (LED)	8	2	0	BELLEVILLE
US 67 & CLARK BRIDGE (LED)	4	0	2	ALTON
US 67 & RIDGE ST. (RR) (LED)	4	0	4	ALTON
US 67 & HENRY ST. (RR) (LED)	3	0	3	ALTON
US 67 & IL 100 (LED)	4	4	0	ALTON
US 67 & 9TH ST. (LED)	4	0	4	ALTON

INTERSECTION	3 SEC	4 SEC	5 SEC	CITY/AREA
US 67 & COLLEGE/20TH ST. (LED)	4	0	4	ALTON
US 67 & ALTON SQ. MALL DR. (LED)	5	0	1	ALTON
US 67 & NORTHPORT DR. (LED)	4	0	4	ALTON
US 67 & GODFREY RD. (LED)	3	0	2	GODFREY
US 67 & TAYLOR AVE/CELESTA ST. (LED)	4	2	2	GODFREY
US 67 & STAMPER LN. (LED)	5	0	1	GODFREY
US 67 & TOLLE LN. (LED)	5	0	0	GODFREY
US 67 & ELM STREET (LED)	4	2	2	GODFREY
US 67 & PEARL ST. / GODFREY(LED)	8	2	0	GODFREY
IL 255 & IL 111 / US 67 EAST JCT. (LED)(VIDEO)	6	0	0	GODFREY
US 67 & WAL-MART DRIVE (LED) (GODFREY)	8	0	1	GODFREY
IL 255 & FOSTERBURG RD., S. JCT. (LED)	5	0	1	ALTON
IL 255 & FOSTERBURG RD. N. JCT. (LED)	5	0	1	ALTON
70TH ST. & W. MAIN ST./FOLEY DR. (LED)	2	0	2	BELLEVILLE
US 67 / IL 111 & LARS HOFFMAN CROSSING (LED)	6	2	2	GODFREY
74TH ST. & FOLEY DR. (LED)	4	2	2	BELLEVILLE
79TH ST. & ST. CLAIR AVE. (LED)	4	2	2	E. ST. LOUIS
IL 100 & CLIFTON TERRACE RD. (LED)	5	0	1	GODFREY
IL 109 & US 67 (LED)	6	2	0	JERSEYVILLE
IL 111 & SUMMIT AVE. (LED)	6	0	2	E. ST. LOUIS
IL 111 & ST. CLAIR AVE. (LED)	4	2	2	WASHINGTON PARK
IL 111 & I-64, N. JCT. (LED)	4	0	0	WASHINGTON PARK
IL 111 & BUNKUM RD. (LED)	5	1	2	WASHINGTON PARK
IL 111 & MARYLAND AVE. (LED)	6	0	2	FAIRMONT CITY
IL 111 & COLLINSVILLE RD., E. JCT. (LED)	4	4	0	FAIRMONT CITY
IL 111 & COLLINSVILLE RD., W. JCT. (LED)	3	0	1	FAIRMONT CITY
IL 111 & HORSESHOE LAKE RD. (LED)	12	0	0	PONTOON BEACH
IL 111 & IL 162 (LED)	4	2	2	PONTOON BEACH
IL 111 & PONTOON RD. (LED)	4	2	2	PONTOON BEACH
IL 111 & ENGINEER RD. (LED)	8	2	0	PONTOON BEACH
IL 111 & CHAIN OF ROCKS RD. (VIDEO) (LED)	9	2	0	PONTOON BEACH-(N OF)
IL 111 & GATEWAY COMMERCE CENTER DR. (LED)	8	3	0	EDWARDSVILLE AND
IL 111 & NEW POAG RD. (LED)	4	0	4	PONTOON BEACH-(N OF)
MADISON AVE. & HEDGE RD. (LED)	6	0	2	SOUTH ROXANA
IL 111 & MADISON ST./HAWTHORNE ST. (RR) (LED)	6	0	0	ROXANA
IL 111 & TYDEMAN AVE. (LED)	4	0	0	ROXANA
IL 111 & THOMAS ST. (LED)	4	0	0	ROXANA
IL 111 & ESTHER AVE. (LED)	4	0	0	WOOD RIVER
IL 111 & IL 143 (LED)	4	0	4	WOOD RIVER
IL 111 & EDWARDSVILLE RD. (LED)	4	4	0	WOOD RIVER
IL 111 & WESLEY DR./LAKIN BLVD. (LED)	4	2	2	WOOD RIVER
IL 111 & MEMORIAL LANE (LED)	5	0	6	WOOD RIVER
IL 111 & AIRLINE DR. (LED)	6	0	4	BETHALTO
IL 111 & IL 140, E. JCT. (LED)	12	0	0	BETHALTO
IL 111 & IL 255, NORTH JUNCTION (LED)	3	0	0	BETHALTO
IL 111 & IL 255, SOUTH JUNCTION (LED)	3	0	0	BETHALTO
IL 111, 140 & FRANKLIN AVE. (LED)	4	2	0	COTTAGE HILLS
IL 111, 140 & STANLEY RD. (LED)	8	0	0	ALTON

*D8 TRAFFIC SIGNAL REPLACE 2016-1

FILE NAME =	USER NAME = milosemr	DESIGNED -	REVISED -	STATE OF ILLINOIS DEPARTMENT OF TRANSPORTATION	SCHEDULES	F.A. RTE.	SECTION	COUNTY	TOTAL SHEETS	SHEET NO.	
pw:\IL084EBIDINTEG.illinois.gov\PIDOT\Documents\DOT Offices\District 8\Projects\0876-DRAWING\DATA\CAD\Sheets\0876J57-sht.pln		CHECKED -	REVISED -			VAR	*	VARIOUS	8	5	
Default	PLOT SCALE = 100.0000' / 1in.	DATE -	REVISED -			CONTRACT NO. 76J57					
	PLOT DATE = 4/15/2016					SCALE:	SHEET	OF	SHEETS	STA.	TO

ILLINOIS FED. AID PROJECT

TRAFFIC SIGNAL BACKPLATE, RETROFLECTIVE SCHEDULE

INTERSECTION	3 SEC	4 SEC	5 SEC	CITY/AREA
IL 111, 140 & POWDER MILL RD. (LED)	4	0	0	ALTON
IL 111, 140 & PARK RD. (LED)	6	0	2	ALTON
IL 111, 140 & FOSTERBURG RD. (LED)	4	2	2	ALTON
IL 127 & ELM ST. (LED)	4	2	2	GREENVILLE
IL 140 (LANDMARK) & IL 143 (LED) BROADWAY CONNECTOR	4	1	1	ALTON
IL 140 & IL 159 (LED)	4	0	4	BETHALTO- (EAST OF)
IL 140 & TEXAS BLVD.(LED)(VIDEO)	4	1	3	BETHALTO
IL 140 & PRAIRIE ST. (LED)	4	4	0	BETHALTO
IL 140 & MORELAND ST. (LED)	2	0	2	BETHALTO
IL 140 & RODGERS AVE. (LED)	4	2	0	ALTON
IL 140 (BROADWAY) & MONUMENT AVE. (LED)	3	2	1	ALTON
IL 143 & DISCOVERY PKWY. (LED)	4	3	1	ALTON
IL 143 & CPL BELCHIK (INDIANA AVE)(LED)	6	2	2	ALTON
IL 143 & ENVIROWAY (LED)	4	2	2	WOOD RIVER
IL 143 & OLD ST. LOUIS RD. (LED)	5	0	3	WOOD RIVER
IL 143 & WOOD RIVER AVE. (LED)	3	0	1	WOOD RIVER
IL 143 & 6TH ST. (LED)	4	0	4	WOOD RIVER
IL 143 & 9TH ST. (LED)	6	0	2	WOOD RIVER
IL 143 & 13TH ST. (LED)	6	0	2	WOOD RIVER
IL 143 & 14TH ST./FERGUSON AVE. (LED)	4	0	0	WOOD RIVER
IL 143 & EDWARDSVILLE RD. (LED)	4	0	0	WOOD RIVER
IL 143 & WESLEY DR. (LED)	5	0	1	WOOD RIVER
IL 143 & SHOP N' SAVE (LED)	4	2	2	WOOD RIVER
IL 143 & IL 255, W. JCT. (LED)	7	0	0	ROXANA
IL 143 & IL 255, E. JCT. (LED)	7	0	0	ROXANA
IL 143 & WANDA RD / MORELAND RD (LED)	8	2	0	ROXANA
IL 143 & GOVERNORS' PARKWAY (LED)	5	0	1	EDWARDSVILLE
IL 143 & IL 157, E. JCT. (LED)	4	0	2	EDWARDSVILLE
IL 143 & IL 159, N. JCT. (LED)	6	0	4	EDWARDSVILLE
IL 159 & MORO ROAD (LED)	8	2	0	EDWARDSVILLE (NORTH)
IL 143 & TROXLER AVE./KOEPLI LN. (LED)	4	0	4	HIGHLAND
IL 157 & FALLING SPRINGS RD. (LED)	2	0	2	CAHOKIA
IL 157 & RANGE LANE (LED)	6	0	4	CAHOKIA
IL 157 & ST. PAUL DRIVE (LED)	6	0	1	CAHOKIA
IL 157 & HAWKINS DR./MISKELL BLVD. (LED)	3	0	3	CAHOKIA
IL 157 & KAZILEK DR. (LED)	2	0	2	CAHOKIA
IL 157 & KENNETH/PARIS AVE. (LED)	2	0	2	CAHOKIA
IL 157 & LAZERCHEFF DR. (LED)	4	0	2	CAHOKIA
IL 157 & I-255, W. JCT. (LED)	6	0	0	CAHOKIA
IL 157 & I-255 E. JCT./TRIPLE LAKES RD. (LED)	4	2	0	CAHOKIA
IL 157 & LAKE DR./FOLEY DR. (LED)	12	0	0	CENTREVILLE
IL 157 & W. MAIN ST./ STATE ST. / E. ST. LOUIS (LED)	12	0	0	E. ST. LOUIS
IL 157 & VIEUX CARRE DR. (LED)	2	0	2	E. ST. LOUIS
IL 157 & ST. CLAIR AVE., E. JCT. (LED)	5	0	1	FAIRVIEW HTS.
IL 157 & ST. CLAIR AVE., W. JCT. (LED)	5	0	1	CASEYVILLE
IL 157 & TUCKER DR. (LED)	6	2	2	CASEYVILLE
IL 157 & I-64, S. JCT./RAUCKMAN DR. (LED)	13	0	0	CASEYVILLE
IL 157 & I-64, N. JCT./PETROFF DR. (LED)	14	0	0	CASEYVILLE

INTERSECTION	3 SEC	4 SEC	5 SEC	CITY/AREA
IL 157 & SASAK BLVD. (LED)	5	0	1	CASEYVILLE
IL 157 & BUNKUM RD. (LED)	10	0	0	CASEYVILLE
IL 157 & O'FALLON ST. (LED)	2	0	2	CASEYVILLE
IL 157 & ST. LOUIS RD., S. JCT. (LED)	5	0	1	COLLINSVILLE
IL 157 & COLLINSVILLE RD., N. JCT. (LED)	5	0	1	COLLINSVILLE
IL 157 & W. MAIN ST. / COLLINSVILLE (LED)	5	0	1	COLLINSVILLE
IL 157 & S. MALL ENT./BEVERLY LN. (LED)	9	2	2	COLLINSVILLE
IL 157 & COLLINSVILLE CROSSING BLVD.(LED)	6	0	1	COLLINSVILLE
IL 157 & I-55/70, S. JCT. (LED)	5	2	2	COLLINSVILLE
IL 157 & I-55/70, N. JCT. (LED)	3	0	1	COLLINSVILLE
IL 157 & EASTPORT PLAZA DR. (LED)	5	1	2	COLLINSVILLE
IL 157 & HORSESHOE LAKE RD. (LED)	4	2	2	COLLINSVILLE
IL 157 & W. MAIN ST. / GLEN CARBON (LED)	5	0	1	GLEN CARBON
IL 157 & I-270, S. JCT. (LED)	5	0	1	GLEN CARBON- (WEST OF)
IL 157 & CHAIN OF ROCKS RD.(LED) (VIDEO)	6	2	2	EDWARDSVILLE
IL 157 & COUNTRY CLUB/AUERBACH (LED) (VIDEO)	6	2	2	EDWARDSVILLE &
IL 157 & MERIDIAN RD.(LED) (VIDEO)	6	2	2	EDWARDSVILLE &
IL 157 & GINGER CREEK/EXCEL (LED) (VIDEO)	6	2	2	GLEN CARBON
IL 157 & CENTER GROVE RD. (LED)	6	2	2	EDWARDSVILLE
IL 157 & UNIVERSITY PARK/MUTUAL CT. (LED)	6	2	2	EDWARDSVILLE
IL 157 & E. UNIVERSITY DR./ GOVERNORS PKWY (LED)	6	2	2	EDWARDSVILLE
IL 157 & UNIVERSITY DR./LEWIS RD. (LED)	6	2	2	EDWARDSVILLE
IL 157 & SCHWARZ ST. (VIDEO) (LED)	5	2	1	EDWARDSVILLE
IL 157 & ESIC DRIVE (LED)	5	0	1	EDWARDSVILLE
CENTER GROVE RD. & ESIC DR. (LED)	5	0	1	EDWARDSVILLE
IL 157 & ST. LOUIS ST. (LED)	4	0	2	EDWARDSVILLE
IL 157 & IL 159 (BUCHANAN ST.), E. JCT. (LED)	3	2	2	EDWARDSVILLE
IL 157 & IL 159 (MAIN ST.), W. JCT. (LED)	6	0	5	EDWARDSVILLE
IL 143 & HILLSBORO AVE. (LED)	3	0	1	EDWARDSVILLE
IL 158 & IL 161, W. JCT. (LED)	5	0	0	SHILOH
IL 158 & SEIBERT RD. (LED)	8	0	2	SHILOH
IL 158 & METROLINK STA.10 (LED)	6	0	0	SHILOH (METRO PAYS)
MAIN ST & CROSS ST. (LED)	4	2	1	SHILOH
IL 158 & WHERRY RD./MAPLE ST. (LED)	6	2	0	SHILOH
OLD IL 158 & PATRIOTS LANDING (LED)	6	1	0	SCOTT AFB
IL 159 & DOUGLAS RD. (LED)	4	2	2	SMITHTON- (NORTH OF)
IL 159 & ROSS LN. (LED)	4	2	2	BELLEVILLE
IL 159 & SANDWEDGE/ WESTHAVEN (LED)	4	2	2	BELLEVILLE
IL 159 & MONROE ST. (LED)	2	0	2	BELLEVILLE
IL 159 & LINCOLN ST. (LED)	4	2	2	BELLEVILLE
IL 159 & WASHINGTON ST. (LED)	5	0	1	BELLEVILLE
IL 159 & "A" ST. (LED)	3	0	1	BELLEVILLE
IL 159 & "C" ST. (LED)	2	0	2	BELLEVILLE
IL 159 & "E" ST./LEBANON AVE. (LED)	6	0	0	BELLEVILLE
IL 159 & "F" ST. (LED)	2	0	2	BELLEVILLE
IL 159 & DOUGLAS AVE. (RR) (LED)	3	0	3	BELLEVILLE
IL 159 & BOUL AVE. (LED)	4	0	2	SWANSEA
IL 159 & IL 161 (LED)(VIDEO)	12	0	0	SWANSEA

*D8 TRAFFIC SIGNAL REPLACE 2016-1

FILE NAME =	USER NAME = milosemr	DESIGNED -	REVISED -	STATE OF ILLINOIS DEPARTMENT OF TRANSPORTATION	SCHEDULES	F.A. RTE.	SECTION	COUNTY	TOTAL SHEETS	SHEET NO.	
pw:\IL084EBIDINTEG.illinois.gov\PIDOT\Documents\DOT Offices\District 8\Projects\D876\DRAWING\DATA\CAD\Sheets\D876J57-sht.pln.dwg		CHECKED -	REVISED -			VAR	*	VARIOUS	8	6	
Default	PLOT SCALE = 100.0000' / 1in.	DATE -	REVISED -			CONTRACT NO. 76J57					
	PLOT DATE = 4/15/2016					SCALE:	SHEET	OF	SHEETS	STA.	TO

ILLINOIS FED. AID PROJECT

TRAFFIC SIGNAL BACKPLATE, RETROFLECTIVE SCHEDULE

INTERSECTION	3 SEC	4 SEC	5 SEC	CITY/AREA
IL 161 & JOSEPHINE DR. (LED)	6	0	1	SWANSEA
IL 159 & PARKWAY DR./STA.#7 ACCESS RD. (LED)	4	2	2	SWANSEA
IL 159 & FULLERTON RD. (LED)	5	1	0	SWANSEA
IL 159 & ROSEWOOD VILLAGE DR. (LED)	4	2	2	SWANSEA
IL 159 & HUNTWOOD RD. (LED)	3	0	1	SWANSEA
IL 159 & GREEN HAVEN DR./NORTH ILLINOIS LANE (LED)	4	2	2	SWANSEA
IL 159 & FRANK SCOTT PKWY. (LED)	8	0	4	SWANSEA
IL 159 & CHATEAU DR.(LED)	4	2	2	FAIRVIEW HGTS
IL 159 & LONGACRE DR./ASHLAND DR.(LED)	4	2	2	FAIRVIEW HTS.
IL 159 & LINCOLN PL. (LOWE'S ENT.) / FAIRVIEW	4	2	2	FAIRVIEW HTS.
IL 159 & LINCOLN TR./LINCOLN HWY. (LED)	8	0	0	FAIRVIEW HTS.
IL 159 & K-MART/ASSOCIATED BANK(LED)	4	2	2	FAIRVIEW HTS.
IL 159 & ST. CLAIR SQ. ENT./MARKET PL. (LED)	7	3	0	FAIRVIEW HTS.
IL 159 & I-64, S. JCT. (LED)	4	0	2	FAIRVIEW HTS.
IL 159 & I-64, N. JCT. (LED)	6	0	0	FAIRVIEW HTS.
IL 159 & LUDWIG DR./SALEM PL. (LED)	3	3	2	FAIRVIEW HTS.
IL 159 & FOUNTAINS BLVD.(LED)	15	0	0	FAIRVIEW HGTS.
IL 159 & MILBURN SCHOOL RD./E. O'FALLON	6	2	2	FAIRVIEW HGTS (NORTH
IL 159 & HOLLYWOOD HTS.RD./BETHEL RD. (LED)	3	1	2	COLLINSVILLE-(SOUTH
IL 159 & GEORGE E. CHANCE PKWY (LED)	6	0	1	CASEYVILLE
IL 159 & S. MORRISON ST./CH 30 (LED)	6	3	1	COLLINSVILLE
IL 159 & CHURCH ST. (LED)	6	0	4	COLLINSVILLE
IL 159 & MAIN ST. / COLLINSVILLE (LED)	6	2	1	COLLINSVILLE
IL 159 & CLAY ST. (LED)	6	2	2	COLLINSVILLE
IL 159 & WICKLIFFE ST. (LED)	6	2	2	COLLINSVILLE
IL 159 & SPRING ST (LED)	4	4	0	COLLINSVILLE
IL 159 & CAMELOT DRIVE (LED)	5	2	2	COLLINSVILLE
IL 159 & COUNTRY LN. (LED)	3	3	2	COLLINSVILLE
IL 159 & ST. CHARLES DR. (LED)	4	2	2	MARYVILLE
IL 159 & I-55/70, NORTH JUNCTION(LED)	4	0	0	MARYVILLE
IL 159 & MARYVILLE CENTER DR. (LED)	14	0	0	MARYVILLE
IL 159 & MAIN ST. / MARYVILLE(LED)	4	2	2	MARYVILLE
IL 159 & VADALABENE DR.(LED)	5	0	1	MARYVILLE
IL 159 & IL 162 (LED)	4	0	4	MARYVILLE
IL 159 & GLEN CROSSING RD. (LED)	4	2	2	GLEN CARBON
OLD TROY RD. & GLEN CROSSING RD. (LED)	5	0	1	GLEN CARBON
IL 159 & I-270 S. JCT. (LED)	5	0	1	GLEN CARBON
IL 159 & I-270 N. JCT. (LED)	5	0	1	GLEN CARBON
IL 159 & GLEN CARBON RD./COTTONWOOD RD. (LED)	3	3	2	GLEN CARBON
COTTONWOOD RD. & JUNCTION DR. (LED)	4	0	4	GLEN CARBON
IL 159 & JUNCTION DR. (LED)	4	3	2	GLEN CARBON
IL 159 & GOVERNORS PARKWAY (LED)	4	0	4	EDWARDSVILLE
IL 159 & LOWE'S / ILLINI DR. (LED)	13	0	0	GLEN CARBON
IL 159 & DIERBURGS ENTRANCE / EDW CROSSING (LED)	5	0	1	EDWARDSVILLE
IL 159 & CENTER GROVE/ KETTLE RIVER (LED)	4	3	2	EDWARDSVILLE
TROY ROAD & CENTER GROVE/GOSHEN RD. (LED)	4	0	4	EDWARDSVILLE
TROY ROAD & GOVERNORS PKWY (LED)	4	0	4	EDWARDSVILLE
TROY ROAD & SOUTHERN/KOHL'S ENTRANCE (LED)	7	0	4	EDWARDSVILLE

INTERSECTION	3 SEC	4 SEC	5 SEC	CITY/AREA
TROY ROAD & HARVARD DRIVE (LED)	4	0	1	EDWARDSVILLE
TROY RD. & LAVELLE (LED)	5	1	0	EDWARDSVILLE
IL 159 (MAIN ST.)& SCHWARZ ST. (LED)	4	0	4	EDWARDSVILLE
TROY ROAD & MONTCLAIRE AVE. (LED)	2	0	2	EDWARDSVILLE
TROY ROAD & FRANKLIN AVE. (LED)	2	0	2	EDWARDSVILLE
TROY ROAD & SCHWARZ ST. (LED)	4	0	4	EDWARDSVILLE
IL 160 & WALNUT ST.(LED)	2	0	2	HIGHLAND
IL 160 & LAUREL ST.(LED)	4	0	0	HIGHLAND
IL 160 & WASHINGTON ST.(LED)	2	0	2	HIGHLAND
IL 160 & CYPRESS ST.(LED)	4	0	0	HIGHLAND
US 40 & TROXLER AVE / IBERG RD (LED)	6	2	2	HIGHLAND
IL 160 & TROXLER AVE.(LED)	4	0	4	HIGHLAND
ST. CLAIR AVE.& 3RD AVE./NORTH ACCESS RD.(LED)	4	2	2	FAIRVIEW HTS.
IL 161 & LYNN LEE CT./EAST ACCESS RD.(LED)	4	1	3	FAIRVIEW HGTS.
IL 161 & ST. CLAIR AVE.(LED)	3	2	1	FAIRVIEW HGTS.
IL 161 & LINCOLN TR./LEBANON RD. (LED)	4	0	4	FAIRVIEW HTS.
IL 161 & CARSON DR. (LED)	4	2	2	BELLEVILLE
IL 161 & FRANK SCOTT PKWY WEST (LED)	8	0	4	BELLEVILLE
IL 161 & ROYAL HTS. RD. (LED)	4	2	2	BELLEVILLE
IL 161 & 17TH ST./SULLIVAN DR. (LED)	4	0	4	BELLEVILLE
IL 161 & N. BELT W./FULLERTON RD. (LED)	5	1	0	SWANSEA
IL 161 & LEBANON AVE. (LED)	8	0	0	BELLEVILLE
IL 161 & "B" ST. (LED)	2	0	2	BELLEVILLE
IL 161 & E. MAIN ST. (LED)	6	0	2	BELLEVILLE
IL 161 & CARLYLE RD. (LED)	8	1	2	BELLEVILLE
IL 161 & WEST BLVD. (LED)	3	3	2	BELLEVILLE
IL 161 & GREEN MOUNT RD.(LED)	8	0	6	BELLEVILLE
GREENMOUNT RD. & WEATHERSTONE DR. / SWIC ENTRANCE	4	0	4	BELLEVILLE
IL 161 & SWIC/YMCA ENT. (LED)	4	2	2	BELLEVILLE
IL 161 & COMMONS DRIVE (LED)	7	0	1	BELLEVILLE
IL 161 & OLD IL 158, N. JCT. (LED)	7	3	0	SCOTT AFB- (SOUTH OF)
IL 162 & RIGGIN RD. (LED)	6	2	2	TROY
IL 162 & BRADLEY SMITH BLVD. (LED)	14	0	0	TROY
IL 162 & I-55, 70 RAMPS SPDI (LED)	8	0	4	TROY
IL 162 & FORMOSA RD./FRONTAGE RD.(LED)	7	0	4	TROY
IL 162 & LIEBLER RD. / FORMOSA RD. (LED)	8	0	4	TROY
IL 162 & 23RD ST. (LED)	4	0	0	GRANITE CITY
IL 162 & MARYVILLE RD. (LED)	4	0	1	GRANITE CITY
IL 162 & HORSESHOE LAKE RD./MOCKINGBIRD LN. (LED)	4	0	4	GRANITE CITY-(EAST
IL 177 & GREEN MOUNT RD. (LED)	4	0	4	BELLEVILLE
IL 177 & 6TH ST. (LED)	4	3	1	MASCOUTAH
IL 203 & OHIO AVE. (LED)	6	2	0	MADISON
IL 203 & BIG BEND RD./EAGLE PARK RD. (LED)	6	0	2	MADISON
IL 203 & HARRISON AVE./MAVERICK DR. (LED)	6	0	0	MADISON
IL 203 & 3RD ST. (LED)	2	0	2	MADISON
IL 203 & 6TH ST. (LED)	2	0	2	MADISON
IL 203 & 20TH ST. (LED)	5	1	0	GRANITE CITY
IL 203 & IL 162 (LED)	3	0	1	GRANITE CITY

*D8 TRAFFIC SIGNAL REPLACE 2016-1

FILE NAME =	USER NAME = milosemr	DESIGNED -	REVISED -	STATE OF ILLINOIS DEPARTMENT OF TRANSPORTATION	SCHEDULES	F.A. RTE.	SECTION	COUNTY	TOTAL SHEETS	SHEET NO.	
pw\IL084EBIDINTEG.illinois.gov\PIWIDOT\Documents\DOT Offices\District 8\Projects\D876\DRAWING\DATA\CAD\Sheets\D876J57-sht.pln		DRAWN -	REVISED -			VAR	*	VARIOUS	8	7	
Default	PLOT SCALE = 100.0000' / 1in.	CHECKED -	REVISED -			CONTRACT NO. 76J57					
	PLOT DATE = 4/15/2016	DATE -	REVISED -			ILLINOIS FED. AID PROJECT					
				SCALE:		SHEET OF SHEETS		STA. TO STA.			

TRAFFIC SIGNAL BACKPLATE, RETROFLECTIVE SCHEDULE

INTERSECTION	3 SEC	4 SEC	5 SEC	CITY/AREA
IL 203 & 23RD ST. (LED)	4	0	4	GRANITE CITY
IL 203 & 25TH ST. (LED)	4	0	0	GRANITE CITY
IL 203 & VICTORY DR. (LED)	4	0	0	GRANITE CITY
IL 203 & ST. CLAIR AVE./IOWA ST. (LED)	4	2	2	GRANITE CITY
IL 203 & MADISON AVE. (LED)	3	1	2	GRANITE CITY
IL 203 & JILL AVE. (LED)	2	0	2	GRANITE CITY
IL 203 JOHNSON/FEHLING ROAD (LED)	4	2	2	GRANITE CITY
IL 203 & NORTH STREET (LED)	6	2	2	GRANITE CITY
IL 203 & MARYVILLE ROAD (RR)(LED)	7	0	1	GRANITE CITY- (NORTH)
US 67 & WALMART ENTRANCE (JERSEYVILLE) (LED)	4	0	2	JERSEYVILLE
US 67 & COUNTY ROAD (LED)	4	2	2	JERSEYVILLE
US 67 & PEARL STREET / JERSEYVILLE (LED)	6	0	2	JERSEYVILLE
BERKSHIRE AVE. & WOOD RIVER AVE.	3	0	1	EAST ALTON
IL 140 (BROADWAY) & WASHINGTON AVE. (LED)	5	0	1	ALTON
BROADWAY & MAIN ST./CUT ST. (LED)	4	2	2	ALTON
BROADWAY & MILTON HILL RD. (LED)	4	0	0	ALTON
CARLYLE AVE & MCCLINTOCK AVE. (LED)	4	1	3	BELLEVILLE
COLLINSVILLE RD. & I-255, W. JCT. (LED)	4	0	2	COLLINSVILLE
COLLINSVILLE RD. & I-255, E. JCT. (LED)	5	0	1	COLLINSVILLE
COLLINSVILLE ROAD & BLACK LANE (LED)	8	2	0	COLLINSVILLE- (WEST)
COLLINSVILLE BELTLINE & JOHNSON HILL RD. (LED)	5	0	1	COLLINSVILLE
COLLINSVILLE BELTLINE & BRIDLE RDG/KINGSBURY CT.	4	2	2	COLLINSVILLE
COLLINSVILLE BELTLINE & KEEBLER RD. (LED)	2	0	2	COLLINSVILLE
COLLINSVILLE BELTLINE & GREENFIELD DR. (LED)	3	1	2	COLLINSVILLE
HORSESHOE LAKE RD. & ARLINGTON DR. (LED)	6	0	0	PONTOON BEACH
LEBANON AVE. & WEST BLVD. (RR) (LED)	3	0	3	BELLEVILLE
LEBANON AVE. & OLD COLLINSVILLE RD. (LED)	4	2	2	BELLEVILLE
LEBANON AVE. & SOUTHWIND DR. (LED)	5	0	1	BELLEVILLE- (NW OF)
LEBANON AVE. & HARTMAN LN. (LED)	5	0	1	SHILOH
SHILOH ROAD & SIERRA / WARRIOR WAY (LED)	4	2	2	SHILOH
LEBANON AVE. & N. GREEN MOUNT RD. (LED)	4	0	4	SHILOH
LINCOLN TR. & POTOMAC DR./N. POINT DR.(LED)	5	1	2	FAIRVIEW HTS.
LINCOLN TR. & UNION HILL RD./MARK DR.(LED)	4	2	2	FAIRVIEW HTS.
LINCOLN TR. & RUBY LN.(LED)	4	2	2	FAIRVIEW HTS.
LINCOLN TR. & COMMERCE LN.(LED)	2	4	2	FAIRVIEW HTS.
LINCOLN HWY & ST. CLAIR SQ., W. ENT.(LED)	4	2	2	FAIRVIEW HTS.
LINCOLN HWY & ST. CLAIR SQ./FREY LN.(LED)	4	2	2	FAIRVIEW HTS.
LINCOLN HWY & ST. CLAIR SQ., E. ENT.(LED)	2	0	2	FAIRVIEW HTS.
LINCOLN HWY. & LEXINGTON / AUBUCHON (LED)	4	2	2	FAIRVIEW HTS.
LINCOLN HWY & OLD COLLINSVILLE RD. (LED)	4	2	2	O'FALLON & FAIRVIEW
MAIN ST. & ST. LOUIS AVE. (LED)	4	0	2	COLLINSVILLE
N. BELT W. & W. MAIN ST. (LED)	12	0	0	BELLEVILLE
N. BELT W. & ROYAL HTS. RD./37TH ST. (LED)	4	2	2	BELLEVILLE
N. BELT W. & BUCKINGHAM/CANTERBURY DR. (LED)	2	0	2	BELLEVILLE
N. MAIN ST. & E. CARONDELET RD./DYROFF ST. (RR) (LED)	6	0	1	DUPO
PONTOON RD. & MISSOURI AVE. (RR) (LED)	4	0	4	GRANITE CITY
PONTOON RD. & MARYVILLE RD. (LED)	4	0	4	GRANITE CITY
ST. CLAIR AVE. & BUNKUM RD.(LED)	4	2	2	FAIRVIEW HTS.

INTERSECTION	3 SEC	4 SEC	5 SEC	CITY/AREA
STATE ST. & I-255, E. JCT.(LED)	5	0	1	E. ST. LOUIS
STATE ST. & I-255, W. JCT.(LED)	5	0	1	E. ST. LOUIS
WEST BLVD. & OLD COLLINSVILLE RD./MALLARD DR. (LED)	6	1	1	BELLEVILLE
TOTALS	2220	375	727	
		3322		
ADDITIONAL QUANTITY		166		
TOTAL PLAN QUANTITY		3488		

NOTES

AN ADDITIONAL QUANTITY IS SHOWN FOR PLACEMENT OF THE PROPOSED BACKPLATE AT LOCATIONS ENCOUNTERED IN ADDITION TO THOSE LISTED IN THE SCHEDULE AS DIRECTED BY THE ENGINEER.

THE FOLLOWING LOCATIONS ARE NOT INCLUDED IN THE PROPOSED UPGRADE DUE TO CONSTRUCTION:

- IL 3 & MARKET ST. IN WATERLOO
- IL 3 & IL 156 IN WATERLOO
- IL 3 & N. MARKET ST./WALMART NORTH OF WATERLOO

*D8 TRAFFIC SIGNAL REPLACE 2016-1

FILE NAME =	USER NAME = milosemr	DESIGNED -	REVISED -	STATE OF ILLINOIS DEPARTMENT OF TRANSPORTATION	SCHEDULES	F.A. RTE.	SECTION	COUNTY	TOTAL SHEETS	SHEET NO.	
						VAR	*	VARIOUS	8	8	
						CONTRACT NO. 76J57					
Default	PLOT DATE = 4/15/2016	DATE -	REVISED -			SCALE:	SHEET	OF	SHEETS	STA.	TO