

STATE OF ILLINOIS
DEPARTMENT OF TRANSPORTATION
DIVISION OF HIGHWAYS

PLANS FOR FEDERAL-AID LOCAL AGENCY IMPROVEMENT

FAU 6325,6328 (DIVISION ST./E 1830N ROAD/PONTIAC ROAD)
SECTION NO. 11-00100-00-WR
PROJECT NO. M5056(018)
JOB NO. C-93-086-14
CONTRACT NO. 87596
BASE WIDENING AND OVERLAY
CITY OF PONTIAC, LIVINGSTON COUNTY
FUNDING TYPE STU

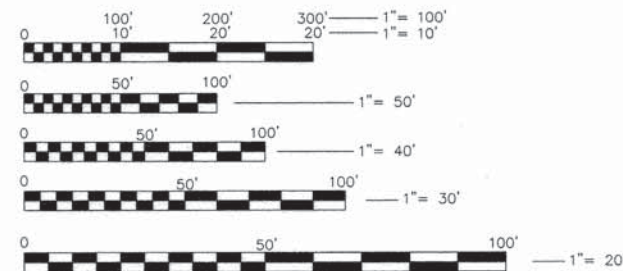
INDEX OF SHEETS

- 1 COVER SHEET
- 2 SUMMARY OF QUANTITIES
- 3 SCHEDULE OF QUANTITIES
- 4 TYPICAL CROSS SECTIONS, LEGENDS, AND PLAN NOTES
- 5-12 PLAN AND PROFILE
- 13-19 DRAINAGE PLAN AND PROFILE

HIGHWAY STANDARD DETAILS

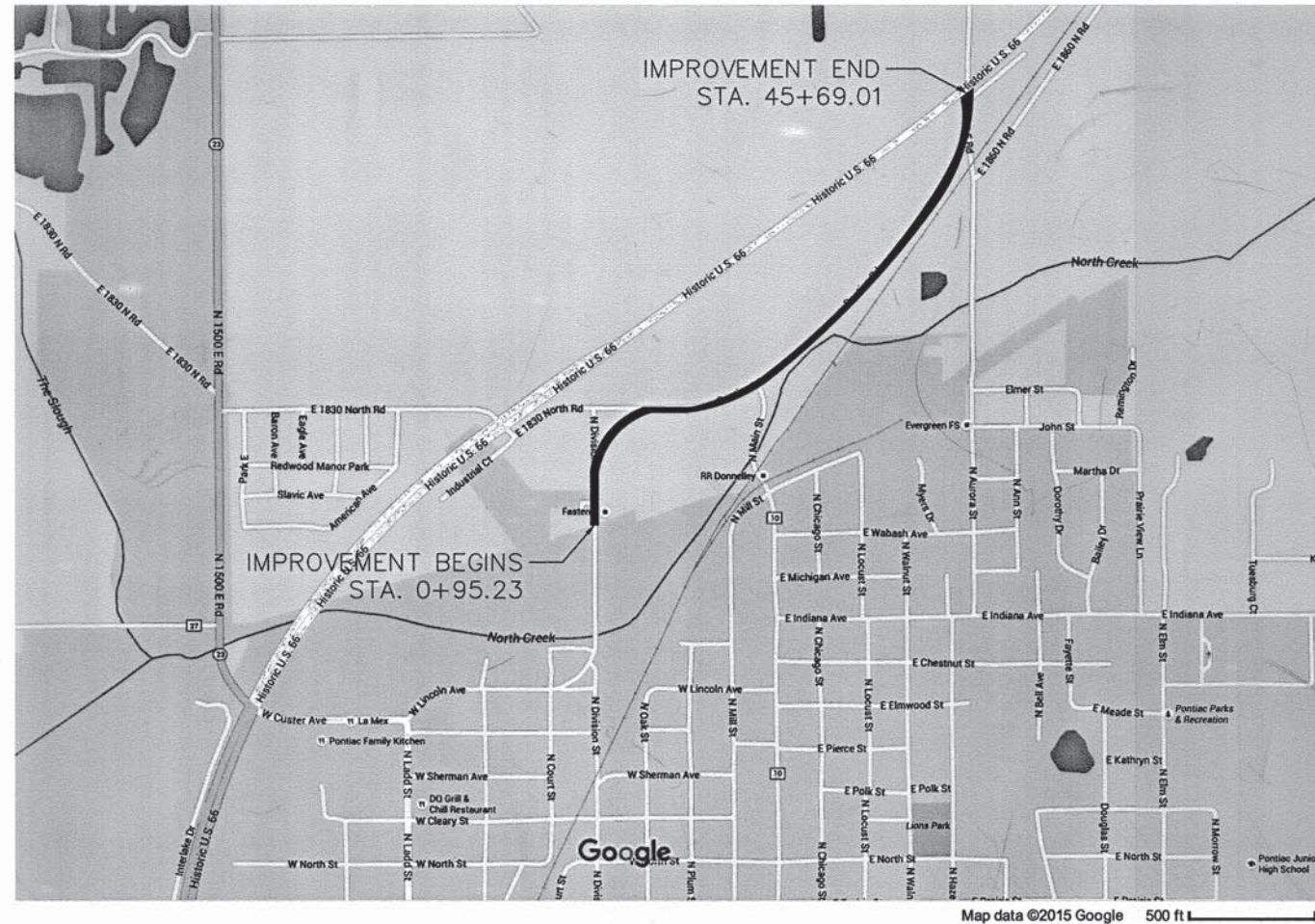
- 000001-06 STANDARD SYMBOLS, ABBREVIATIONS AND PATTERNS
- 280001-07 TEMPORARY EROSION CONTROL SYSTEMS
- 442201-03 CLASS C AND D PATCHES
- 482011-03 HMA SHOULDER STRIPS/SHOULDERS WITH RESURFACING OR WIDENING AND RESURFACING PROJECTS
- 542301-03 PRECAST REINFORCED CONCRETE FLARED END SECTION
- 606001-06 CONCRETE CURB TYPE B AND COMBINATION CONCRETE CURB AND GUTTER
- 606301-04 PC CONCRETE ISLANDS AND MEDIANS
- 701326-04 LANE CLOSURE 2L, 2W, PAVEMENT WIDENING, ≥ 45 MPH.
- 701501-06 URBAN LANE CLOSURE, 2L, 2W UNDIVIDED
- 701901-05 TRAFFIC CONTROL DEVICES
- 780001-05 TYPICAL PAVEMENT MARKINGS

FUNCTIONAL CLASSIFICATION - URBAN MINOR ARTERIAL
POSTED SPEED = 30 MPH & 35 MPH
DESIGN SPEED = 35 MPH
ADT (2014) = 2400



FULL SIZE PLANS HAVE BEEN PREPARED USING STANDARD ENGINEERING SCALES. REDUCED SIZE PLANS WILL NOT CONFORM TO STANDARD SCALES. IN MAKING MEASUREMENTS ON REDUCED PLANS, THE ABOVE SCALES MAY BE USED.

J.U.L.I.E.
JOINT UTILITY LOCATION INFORMATION FOR EXCAVATION
1-800-892-0123
OR 811



LOCATION OF SECTION INDICATED THIS: -

THE IMPROVEMENTS UNDER THIS CONTRACT ARE IN ACCORDANCE WITH THE ILLINOIS DEPARTMENT OF TRANSPORTATION "BUREAU OF LOCAL ROADS AND STREETS MANUAL, 2005 EDITION"

APPROVED	<i>Robert Russell</i>	2016
	4-5	
	LOCAL AGENCY OFFICIAL (MAYOR)	
PASSED	<i>Douglas</i>	2016
	4-5	
	DISTRICT ENGINEER OF LOCAL ROADS AND STREETS	
PASSED	<i>Paul Albrecht</i>	2016
	4/10/16	
	REGION 2 ENGINEER	

LOCATION MAP - CITY OF PONTIAC

TOTAL LENGTH OF PROJECT = 0.828 MILES
NET LENGTH OF PROJECT = 0.828 MILES



CITY OF PONTIAC
115 WEST HOWARD STREET
PONTIAC, ILLINOIS
(815) 844-3396



I HEREBY CERTIFY THAT THIS ENGINEERING DOCUMENT WAS PREPARED BY ME OR UNDER MY DIRECT PERSONAL SUPERVISION AND THAT I AM A DULY LICENSED PROFESSIONAL ENGINEER UNDER THE LAWS OF THE STATE OF ILLINOIS

BRIAN J. VERDUN, P.E. DATE: MARCH 25, 2016
LICENSE NO. 062-056061
MY LICENSE RENEWAL DATE IS NOVEMBER 30, 2017

PRINTED BY THE AUTHORITY
OF THE STATE OF ILLINOIS

CONSTRUCTION TYPE CODE : 0004

CODE NO.	ITEM	UNIT	TOTAL QUANTITY
20200100	EARTH EXCAVATION	CU YD	1,490
20201200	REMOVAL AND DISPOSAL OF UNSUITABLE MATERIAL	CU YD	440
20800150	TRENCH BACKFILL	CU YD	49
21101505	TOPSOIL EXCAVATION AND PLACEMENT	CU YD	75
21400100	GRADING AND SHAPING DITCHES	FOOT	1,153
25000110	SEEDING, CLASS 1A	ACRE	0.50
25000400	NITROGEN FERTILIZER NUTRIENT	POUND	50
25000500	PHOSPHORUS FERTILIZER NUTRIENT	POUND	50
25000600	POTASSIUM FERTILIZER NUTRIENT	POUND	50
25100105	MULCH, METHOD 1	ACRE	0.50
28000305	TEMPORARY DITCH CHECKS	FOOT	252
35101400	AGGREGATE BASE COURSE, TYPE B	TON	13
35400300	PORTLAND CEMENT CONCRETE BASE COURSE WIDENING, 8"	SQ YD	1,748
35501316	HOT-MIX ASPHALT BASE COURSE, 8"	SQ YD	1,656
40600290	BITUMINOUS MATERIALS (TACK COAT)	POUND	7,150
40600400	MIXTURES FOR CRACKS, JOINTS, AND FLANGWAYS	TON	25
*40600627	LEVELING BINDER (MACHINE METHOD), IL-9.5FG, N50	TON	495
40600990	TEMPORARY RAMP	SQ YD	20
40603310	HOT-MIX ASPHALT SURFACE COURSE, MIX "C", N50	TON	1,019
44000152	HOT-MIX ASPHALT SURFACE REMOVAL, 3/4"	SQ YD	10,976
44201329	CLASS C PATCHES, TYPE II, 8 INCH	SQ YD	174
44201333	CLASS C PATCHES, TYPE III, 8 INCH	SQ YD	25
44300200	STRIP REFLECTIVE CRACK CONTROL TREATMENT	FOOT	1,744
48102100	AGGREGATE WEDGE SHOULDER, TYPE B	TON	526
50104400	CONCRETE HEADWALL REMOVAL	EACH	12
50105220	PIPE CULVERT REMOVAL	FOOT	350
54213660	PRECAST REINFORCED CONCRETE FLARED END SECTIONS 15"	EACH	18
542A0220	PIPE CULVERTS, CLASS A, TYPE 1 15"	FOOT	408
60618300	CONCRETE MEDIAN SURFACE, 4"	SQ FT	1,018
60604400	COMBINATION CONCRETE CURB & GUTTER, TYPE B-6.18	FOOT	169.0
67100100	MOBILIZATION	L SUM	1
X7010216	TRAFFIC CONTROL AND PROTECTION, (SPECIAL)	L SUM	1
70103815	TRAFFIC CONTROL SURVEILLANCE	CAL DA	10
70300100	SHORT TERM PAVEMENT MARKING	FOOT	2,192
70300150	SHORT TERM PAVEMENT MARKING REMOVAL	SQ FT	658
△ 78000200	THERMOPLASTIC PAVEMENT MARKING - LINE 4"	FOOT	9,261
△ 78000650	THERMOPLASTIC PAVEMENT MARKING - LINE 24"	FOOT	68

* Includes Special Provision
 △ Specialty Items

Z:\Route 66 Spur (Route 4)\2014\Drawings\Quantities.dwg, 3/30/2016 9:49:06 AM, DWG To PDF.pc3

FILE NAME = QUANTITIES.DWG	USER NAME = cjt/pantiac	DESIGNED -- BJV	REVISED -- 033016	STATE OF ILLINOIS DEPARTMENT OF TRANSPORTATION	SUMMARY OF QUANTITIES	F.A.U. RITE	SECTION	COUNTY	TOTAL SHEETS	SHEET NO.	
PLOT SCALE = N/A	DRAWN -- BJV	CHECKED -- JH	REVISED --			5325/8	11--00100--00--WR	LIVINGSTON	19	2	
PLOT DATE = 032516	DATE -- 032516	REVISED --	REVISED --			CONTRACT NO. 87516					
SCALE: NONE SHEET 2 OF 19 SHEETS STA. _____ TO STA. _____						ILLINOIS FED. AID PROJECT					

EARTHWORK				
LOCATION		EARTH EXCAVATION	REMOVAL AND DISPOSAL	
STATION	TO	CU YD	OF UNSUITABLE MATERIAL	CU YD
0+95.23	TO	45+69.01		440
0+95.23	TO	37+49.87	1,490	

GRADING DITCHES			
LOCATION		STATION	FOOT
STATION	TO	STATION	FOOT
1+78.32 RT	TO	3+05.95 RT	128
3+30.95 RT	TO	4+16.75 RT	86
5+45.34 RT	TO	6+13.23 RT	68
6+69.92 RT	TO	8+28.64 RT	159
9+01.68 RT	TO	11+69.67 RT	268
11+00.00 LT	TO	11+34.50 LT	35
11+52.26 LT	TO	13+33.71 LT	151
13+45.71 LT	TO	14+25.24 LT	80
14+38.56 LT	TO	15+21.70 LT	83
15+32.02 LT	TO	15+50.00 LT	17
29+60.00 LT	TO	29+80.02 LT	20
29+92.10 LT	TO	30+12.00 LT	20
37+15.00 LT	TO	37+34.59 LT	20
37+46.59 LT	TO	37+65.00 LT	18
TOTAL			1,153

PCC BASE COURSE WIDENING			
LOCATION		STATION	SQ YD
STATION	TO	STATION	SQ YD
0+95.23 RT	TO	18+55.05 RT	391
0+95.23 LT	TO	5+19.53 LT	94
7+18.09 LT	TO	10+64.75 LT	77
12+73.50 LT	TO	44+53.97 LT	707
20+34.19 RT	TO	41+38.83 RT	468
42+07.08 RT	TO	42+57.29 RT	11
TOTAL			1,748

PORTLAND CEMENT CONCRETE						
LOCATION		CLASS C PATCHES	CONCRETE	COMBINATION	AGGREGATE	
STATION	TO	TYPE II 8 INCH SQ YD	MEDIAN SURFACE, 4 INCH SQ FT	CURB AND GUTTER B6.18 FOOT	BASE COURSE TYPE B	TON
6+94.00 LT	TO	1+13.00 RT	6			
		6+94.00 RT	10			
8+60.00		8+60.00 RT	7			
10+57.00 LT		11+65.00 RT	9			
16+54.00 LT			9			
17+21.00 LT			6			
17+23.00 RT			9			
18+35.00 LT		18+35.00 RT	7			
21+31.00 LT		21+31.00 RT	6			
		23+33 RT	7			
24+75.00 LT			6			
		24+75.00 RT	10			
26+02.00 LT		26+02.00 RT	8			
30+26.00 LT			11			
		30+26.00 RT	11			
31+13.00 LT			9			
41+38.83 RT		42+57.29 RT				
41+92.51 RT		42+56.43 RT		1,018	169.0	13
43+20.00 LT			7			
		43+20.00 RT	10			
TOTAL		174	25	1,018	169.0	13

DRAINAGE						
LOCATION		CONCRETE HEADWALL REMOVAL	PIPE CULVERT REMOVAL	END SECTIONS	PIPE CULVERTS CLASS A TYPE 1, 15"	TRENCH BACKFILL
STATION	TO	EA	FOOT	EA	FOOT	CU YD
2+95.94 RT	TO			1		
2+95.94 RT	TO		45		55	7
3+40.94 RT	TO			1		
4+16.37 RT	TO	1		1		
4+16.37 RT	TO		130		140	17
5+46.37 RT	TO			1		
6+13.23 RT	TO	1		1		
6+13.23 RT	TO		57		65	8
6+69.92 RT	TO			1		
8+28.64 RT	TO			1		
8+28.64 RT	TO		83		91	11
9+11.98 RT	TO			1		
13+37.31 LT	TO	1		1		
13+37.31 LT	TO		11		16	2
13+48.17 LT	TO	1		1		
14+24.49 LT	TO	1		1		
14+24.49 LT	TO		18		24	3
14+41.92 LT	TO	1		1		
15+18.42 LT	TO	1		1		
15+18.42 LT	TO		17		24	3
15+35.43 LT	TO	1		1		
29+77.68 LT	TO	1		1		
29+77.68 LT	TO		17		24	3
29+94.58 LT	TO	1		1		
37+32.47 LT	TO	1		1		
37+32.47 LT	TO		17		24	3
37+49.30 LT	TO	1		1		
37+49.30 LT	TO					
TOTAL		12	350	18	408	49

HOT-MIX ASPHALT									
LOCATION		BITUMINOUS MATERIALS (TACK COAT)	LEVELING BINDER MACHINE METHOD IL-9.5FG, N50	HOT-MIX ASPHALT SURFACE COURSE MIX "C", N50	HOT-MIX ASPHALT BASE COURSE, 8"	HOT-MIX ASPHALT SURFACE COURSE REMOVAL, 3/4"	MIXTURES FOR CRACKS JOINTS, AND FLANGEWAYS	TEMPORARY RAMP	STRIP REFLECTIVE CRACK CONTROL
STATION	TO	POUND	TON	TON	SQ YD	SQ YD	TON	SQ YD	FOOT
0+95.23	TO	5,360	450	750		9,741	25		
0+95.23 LT	TO							10	
45+69.01 LT	TO							10	
0+95.23 LT	TO								93
7+18.01 LT	TO								74
12+73.83 LT	TO								707
0+95.23 RT	TO								391
20+34.19 RT	TO								468
42+07.08 RT	TO								11
0+95.23 LT	TO	100		15	136				
1+29.8 RT	TO	100		15	136				
2+28.90 LT	TO	100		15	136				
2+95.94 RT	TO	60		9	80				
3+12.23 LT	TO	50		8	69				
4+22.38 LT	TO	100		15	136				
4+44.00 RT	TO	100		15	136				
5+15.50 LT	TO	180	17	28		410			
8+28.64 RT	TO	100		15	136				
10+49.88 LT	TO	190	17	29		410			
11+26.90 LT	TO	30		4	34				
11+85.73 RT	TO	100		15	136				
12+28.71 LT	TO	30		4	34				
13+83.81 RT	TO	80		13	112				
14+23.29 LT	TO	30		4	34				
15+16.76 LT	TO	30		4	34				
15+27.58 RT	TO	40		6	58				
16+02.34 RT	TO	100		15	136				
22+71.97 LT	TO	30		4	34				
29+75.03 LT	TO	30		4	34				
37+29.59 LT	TO	30		4	34				
41+38.83 RT	TO	70	6	11		154			
42+57.29 RT	TO	50	5	8		125			
44+08.59 RT	TO	60		9	13	136			
TOTAL		7,150	495	1,019	1,656	10,976	25	20	1,744

Aggregate Wedge			
LOCATION		AGGREGATE SHOULDER WEDGE TYPE B	
STATION	TO	TON	
0+95.23 RT	TO	1+29.80 RT	3
1+66.23 LT	TO	2+28.90 LT	5
1+96.32 RT	TO	2+95.94 RT	8
2+99.90 LT	TO	3+12.23 LT	1
3+40.94 RT	TO	4+44.00 RT	8
3+52.23 LT	TO	4+22.38 LT	5
4+93.14 LT	TO	5+15.50 LT	2
5+16.00 RT	TO	6+13.23 RT	7
6+69.92 RT	TO	8+28.64 RT	12
7+17.68 LT	TO	10+49.88 LT	25
9+11.98 RT	TO	11+85.73 RT	21
12+78.34 LT	TO	13+83.81 RT	4
12+58.39 RT	TO	13+83.81 RT	10
13+50.71 LT	TO	14+23.29 LT	6
14+42.98 RT	TO	15+27.58 RT	6
14+43.50 LT	TO	15+16.76 LT	6
15+36.97 LT	TO	22+71.97 LT	56
15+62.09 RT	TO	16+02.34 RT	3
16+72.41 RT	TO	18+55.05 RT	14
20+34.19 RT	TO	41+38.83 RT	160
22+79.97 LT	TO	29+75.03 LT	53
29+97.09 LT	TO	37+29.59 LT	56
37+51.59 LT	TO	44+53.97 LT	53
42+07.08 RT	TO	42+57.29 RT	4
43+94.05 RT	TO	44+08.59 RT	1
TOTAL		526	

PAVEMENT MARKINGS						
LOCATION		SHORT TERM PAVEMENT MARKING	SHORT TERM PAVEMENT MARKING REMOVAL	THERMOPLASTIC PAVEMENT MARKING LINE - 4" - YELLOW DASHED	THERMOPLASTIC PAVEMENT MARKING LINE - 4" - WHITE	THERMOPLASTIC PAVEMENT MARKING LINE - 24" - WHITE
STATION	TO	FOOT	FOOT	FOOT	FOOT	FOOT
0+95.23	TO	45+69.01	2,192	2,192	2,192	
0+95.23 RT	TO	1+29.80 RT				35
1+66.23 LT	TO	2+28.90 LT				63
1+96.32 RT	TO	2+95.94 RT				100
2+99.90 LT	TO	3+12.23 LT				12
3+40.94 RT	TO	4+44.00 RT				103
3+52.23 LT	TO	4+22.38 LT				70
4+93.14 LT	TO	5+15.50 LT				22
5+16.00 RT	TO	6+13.23 RT				97
6+23.34 LT	TO					
6+69.92 RT	TO	8+28.64 RT				159
7+17.68 LT	TO	10+49.88 LT				332
9+11.98 RT	TO	11+85.73 RT				274
11+23.62 LT	TO					
12+78.34 LT	TO	13+83.81 RT				50
12+58.39 RT	TO	13+83.81 RT				125
13+50.71 LT	TO	14+23.29 LT				74
14+42.98 RT	TO	15+27.58 RT				85
14+43.50 LT	TO	15+16.76 LT				73
15+36.97 LT	TO	22+71.97 LT				735
15+62.09 RT	TO	16+02.34 RT				40
16+72.41 RT	TO	18+55.05 RT				183
20+34.19 RT	TO	41+38.83 RT				2,105
22+79.97 LT	TO	29+75.03 LT				695
29+97.09 LT	TO	37+29.59 LT				733
37+51.59 LT	TO	44+53.97 LT				779
41+94.87 RT	TO					
42+07.08 RT	TO	42+57.29 RT				50
43+94.05 RT	TO	45+69.01 RT				75
45+56.55 RT	TO					
TOTAL		2,192	2,192	2,192	7,069	68

TOPSOIL, SEEDING, AND EROSION CONTROL								
LOCATION		TOPSOIL EXCAVATION AND PLACEMENT	SEEDING CLASS 1A	NITROGEN FERTILIZER NUTRIENT	PHOSPHORUS FERTILIZER NUTRIENT	POTASSIUM FERTILIZER NUTRIENT	MULCH METHOD 1	TEMPORARY DITCH CHECKS
STATION	TO	CU YD	ACRE	LB	LB	LB	ACRE	FOOT
1+78.32 RT	TO	3+05.95 RT	5	0.05	5	5	0.05	18
3+30.95 RT	TO	4+16.75 RT	5	0.03	3	3	0.03	18
5+45.34 RT	TO	6+13.23 RT	5	0.03	3	3	0.03	18
6+69.92 RT	TO	8+28.64 RT	5	0.07	6	6	0.07	18
9+01.68 RT	TO	11+69.67 RT	10	0.11	10	10	0.11	18
11+00.00 LT	TO	11+34.50 LT	5	0.01	1	1	0.01	18
11+52.26 LT	TO	13+33.71 LT	5	0.07	6	6	0.07	18
13+45.71 LT	TO	14+25.24 LT	5	0.03	3	3	0.03	18
14+38.56 LT	TO	15+21.70 LT	5	0.03	3	3	0.03	18
15+32.02 LT	TO	15+50.00 LT	5	0.01	1	1	0.01	18
29+60.00 LT	TO	29+80.02 LT	5	0.01	1	1	0.01	18
29+92.10 LT	TO	30+12.00 LT	5	0.01	1	1	0.01	18
37+15.00 LT	TO	37+34.59 LT	5	0.01	1	1	0.01	18
37+46.59 LT	TO	37+65.00 LT	5	0.01	1	1	0.01	18
TOTAL		75	0.50	50	50	50	0.50	252

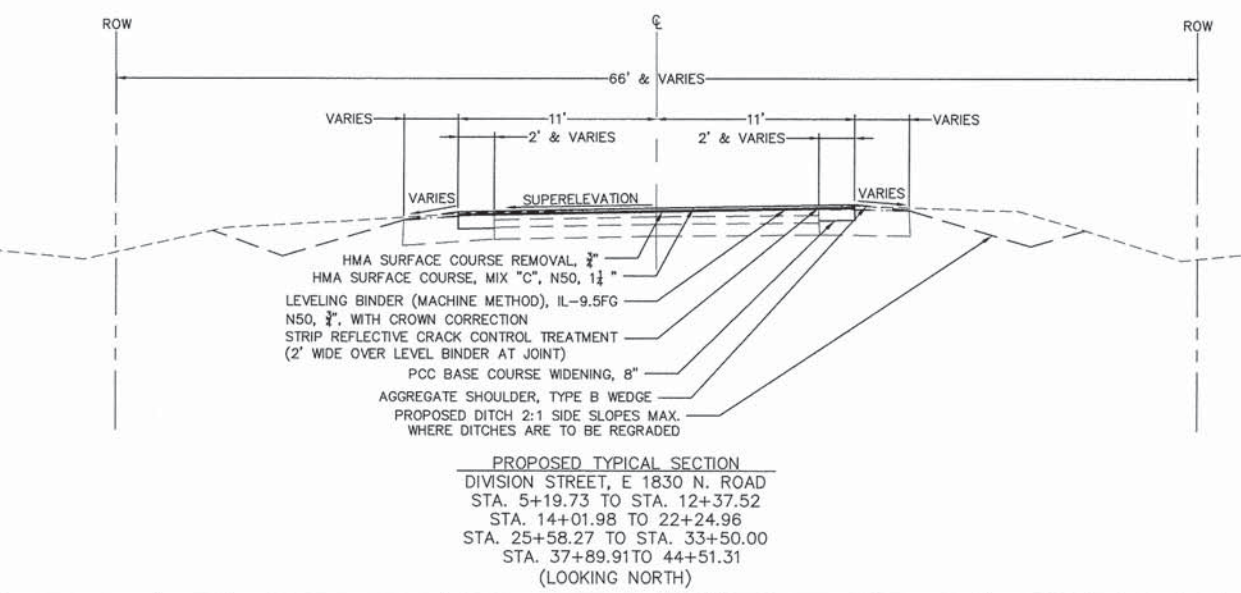
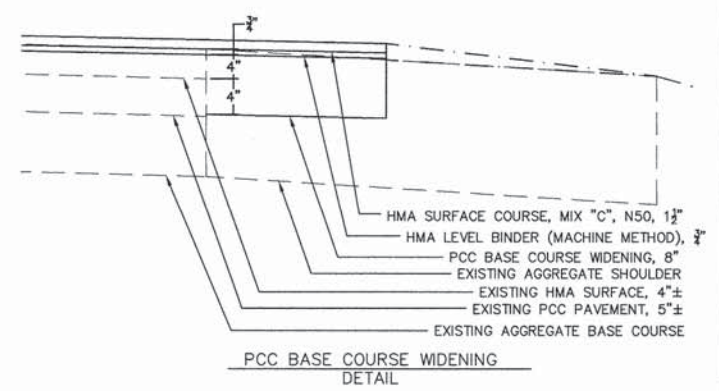
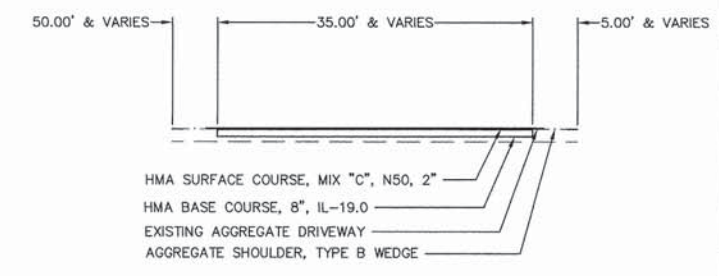
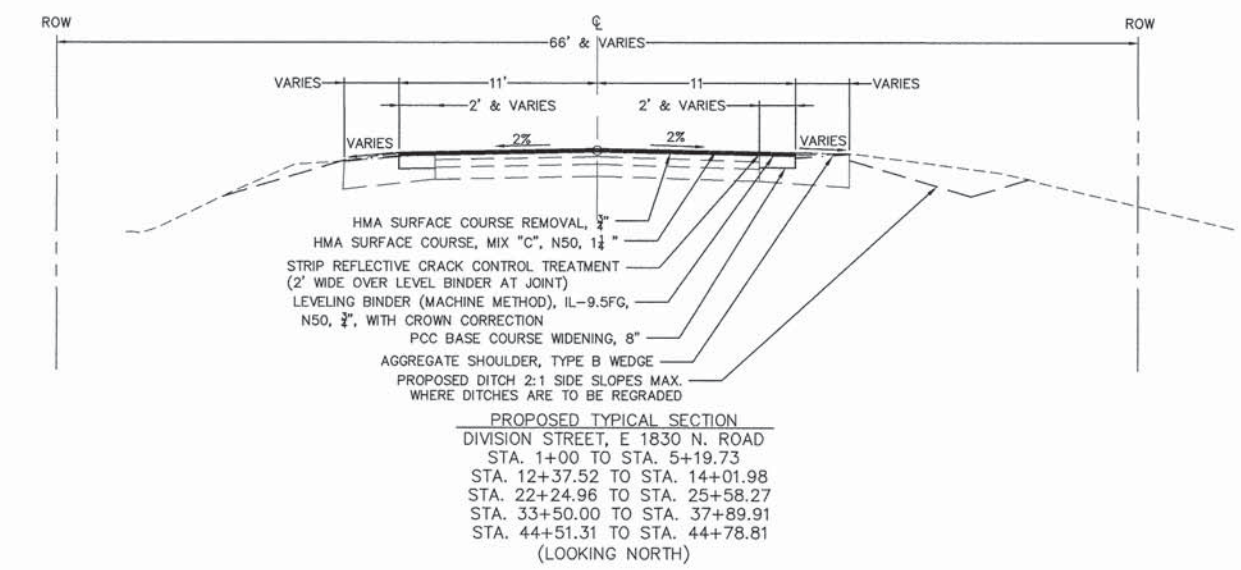
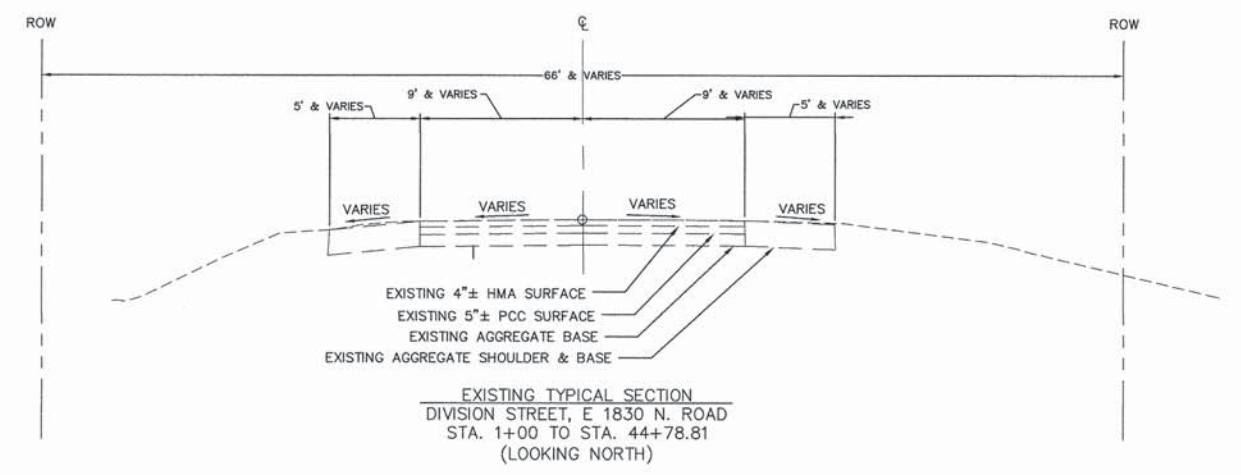
FILE NAME = QUINTILES.DWG	USER NAME = cityofpntinc	DESIGNED -- BJV	REVISED -- 033016	STATE OF ILLINOIS DEPARTMENT OF TRANSPORTATION	SCHEDULE OF QUANTITIES	F.A.U. RITE	SECTION	COUNTY	TOTAL SHEETS	SHEET NO.	
		DRAWN -- BJV	REVISED --			6325/6	11-- 00100--00--WR	LIVINGSTON	19	3	
		CHECKED -- JH	REVISED --			SCALE: NONE	SHEET 3 OF 19 SHEETS	STA. TO STA.	CONTRACT NO. 87596		
		DATE -- 032516	REVISED --			ILLINOIS FED. AID PROJECT					

LEGEND

- APPROXIMATE PROPERTY LINE
- EXISTING FENCE LINE
- - - - - EXISTING GROUND CONTOURS
- - - - - EDGE OF FIELD LINE
- W-W- APPROXIMATE WATER LINE LOCATION
- - - - - APPROXIMATE SANITARY SEWER LOCATION




NOTES:

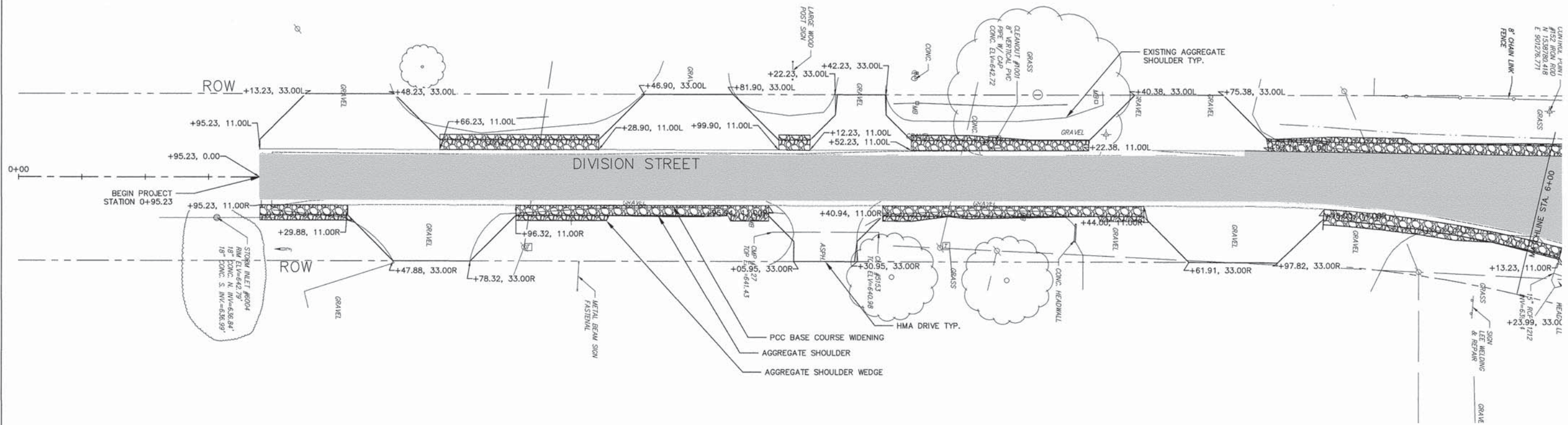
1. ANY REFERENCE TO A STANDARD IN THESE PLANS SHALL BE TAKEN TO MEAN THE LATEST EDITION OF THE CITED STANDARD.
2. THE TELEPHONE NUMBER OF JOINT UTILITY LOCATION INFORMATION FOR CONTRACTOR'S IS 1-800-892-0123.
3. IT SHALL BE THE CONTRACTOR'S RESPONSIBILITY TO DETERMINE THE ACTUAL LOCATION OF ALL UNDERGROUND UTILITY FACILITIES HE OR SHE SHALL ALSO OBTAIN FROM THE RESPECTIVE UTILITY COMPANIES DETAILED INFORMATION RELATIVE TO THE LOCATION OF THEIR FACILITIES AND THE WORKING SCHEDULES OF THE UTILITY COMPANIES FOR THEIR MARKING OF THE EXACT LOCATION. THE CONTRACTOR SHALL COORDINATE CONSTRUCTION ACTIVITIES WITH UTILITY COMPANIES.
4. CENTERLINE PAVEMENT MARKINGS SHALL BE 4" WIDE YELLOW THERMOPLASTIC SKIP DASH.
5. OUTSIDE LANE EDGE MARKINGS SHALL BE 4" WIDE WHITE THERMOPLASTIC SOLID LINE.
6. GENERAL SEQUENCE OF CONSTRUCTION WILL BE TO PLACE PCC BASE COURSE WIDENING, MILL SURFACE, PLACE HMA.
7. EXCESS AGGREGATE TO REMAIN IN ROW AS SHOWN ON PLANS AND ALONG PROPOSED SHOULDER EDGE.



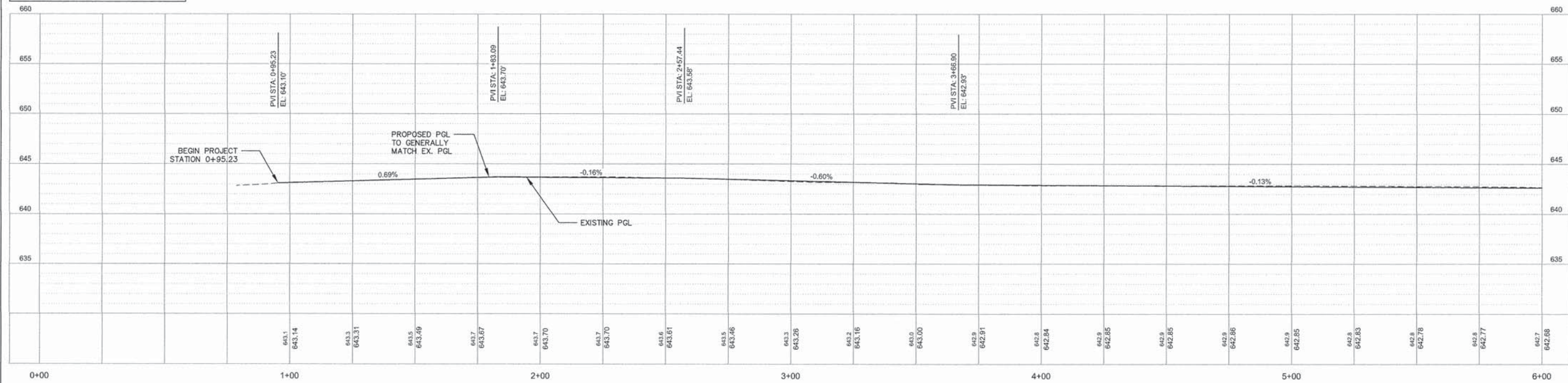
HMA MIXTURE REQUIREMENTS			
MIXTURE USE(S)	HMA SURFACE	HMA LEVEL BINDER	HMA BASE COURSE, 8"
AC/PG	PG 64-22	PG 64-22	PG 64-22
DESIGN AIR VOIDS	4.0% @ NOES=50	4.0% @ NOES=50	4.0% @ NOES=50
MIXTURE COMPOSITION (GRADATION MIXTURE)	IL 9.5	IL 9.5FG	IL 19.0
FRICTION AGGREGATE	MIX "C"	N/A	N/A

Z:\Route 66 Spur (Route 4)\2014\Drawings\Sections.dwg, 3/24/2016 3:47:55 PM, DWG To PDF.pc3

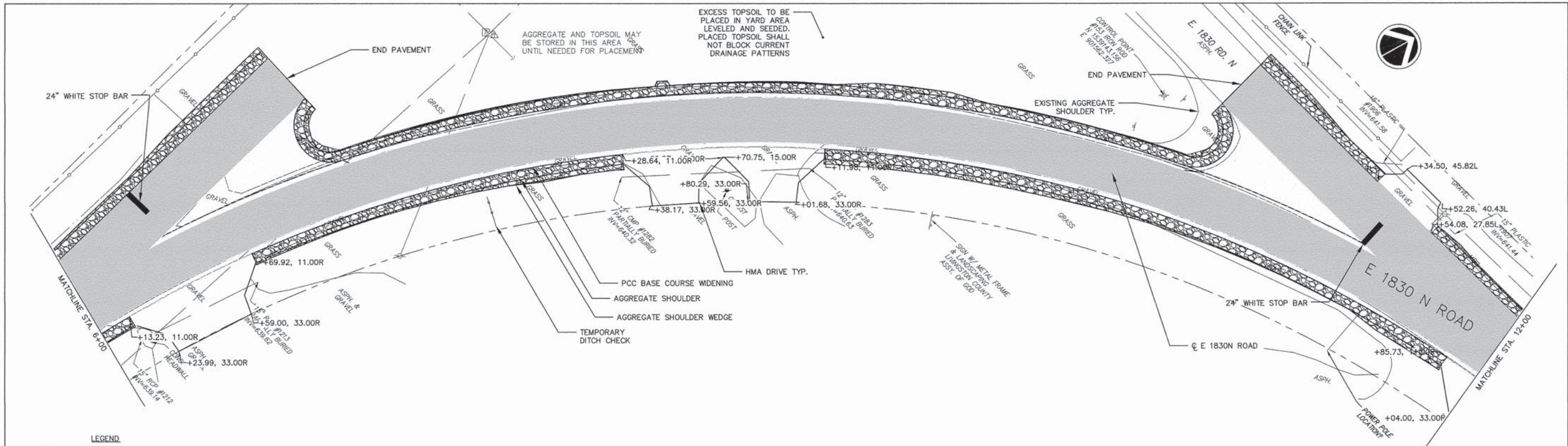
- LEGEND**
-  PROPOSED HMA PAVEMENT
 -  PROPOSED PCC BASE COURSE WIDENING
 -  PROPOSED AGGREGATE SHOULDER



PROFILE VIEW OF ALIGNMENT - CL
 HORIZONTAL SCALE: 1" = 20'
 VERTICAL SCALE: 1" = 5'



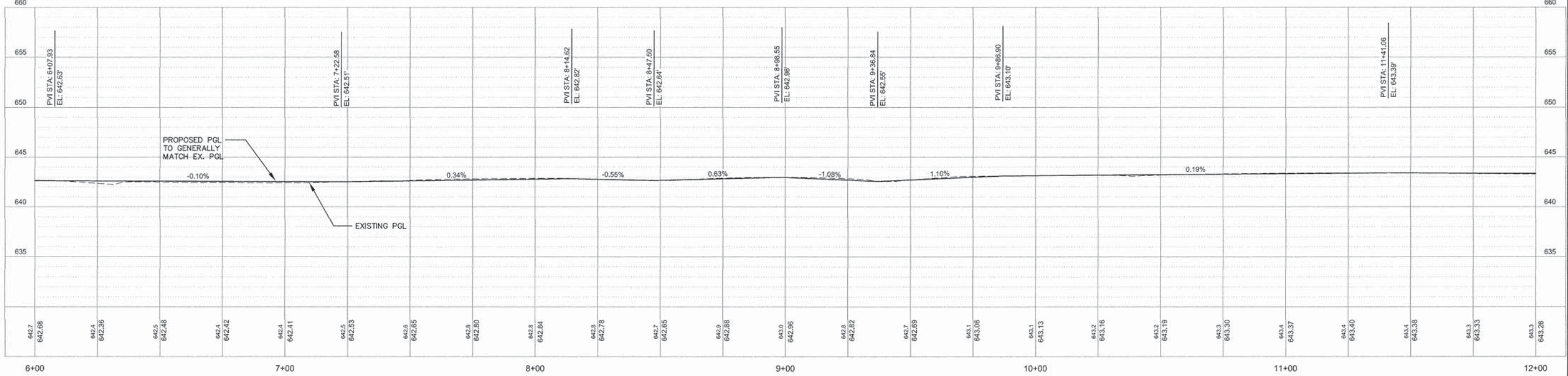
FILE NAME = ALIGNMENT.DWG	USER NAME = cityofpisc	DESIGNED - BJV	REVISED -	STATE OF ILLINOIS DEPARTMENT OF TRANSPORTATION	PLAN AND PROFILES ROADWAY	F.A.U. RTE. 5325/8	SECTION 11-00100-00-WR	COUNTY LIVINGSTON	TOTAL SHEETS 19	SHEET NO. 5	
	PLOT SCALE = 1" = 20'	CHECKED - JH	REVISED -			SCALE: 1"=20'	SHEET 5 OF 19 SHEETS	CONTRACT NO. 87596		ILLINOIS FED. AID PROJECT	
	PLOT DATE = 032516	DATE = 032516	REVISED -			STA. 0+00 TO STA. 6+00					



LEGEND




	PROPOSED HMA PAVEMENT
	PROPOSED PCC BASE COURSE WIDENING
	PROPOSED AGGREGATE SHOULDER

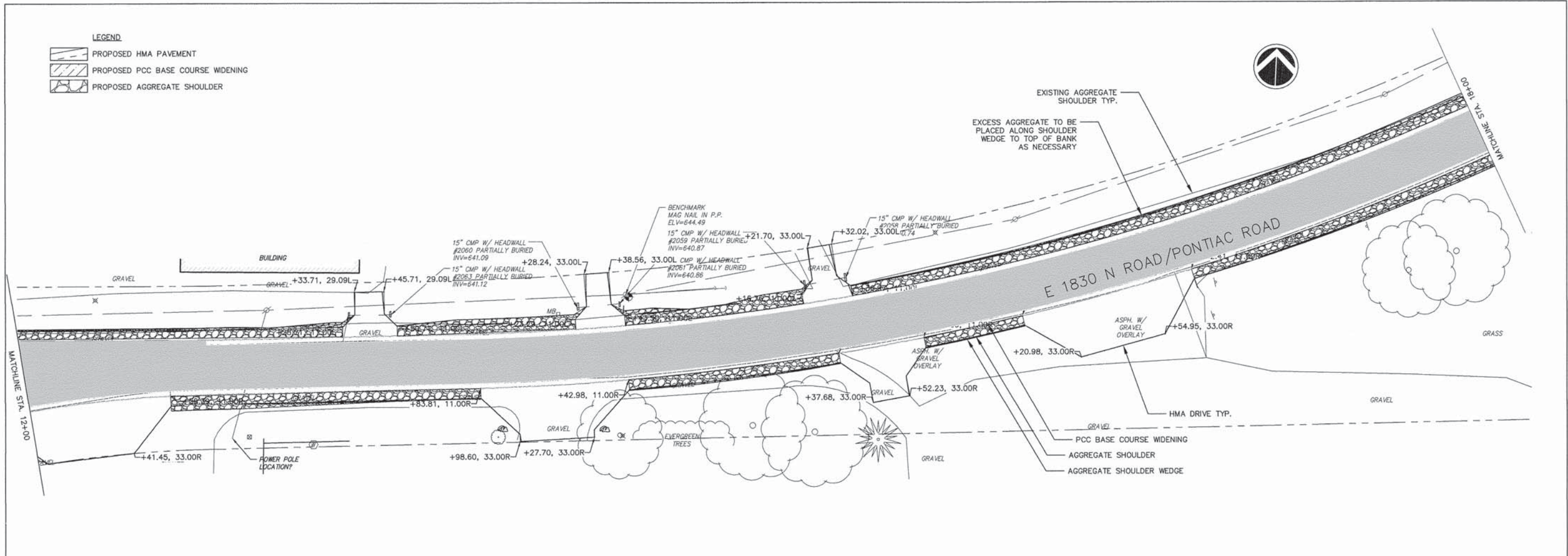
PROFILE VIEW OF ALIGNMENT - CL
 HORIZONTAL SCALE: 1" = 20'
 VERTICAL SCALE: 1" = 5'



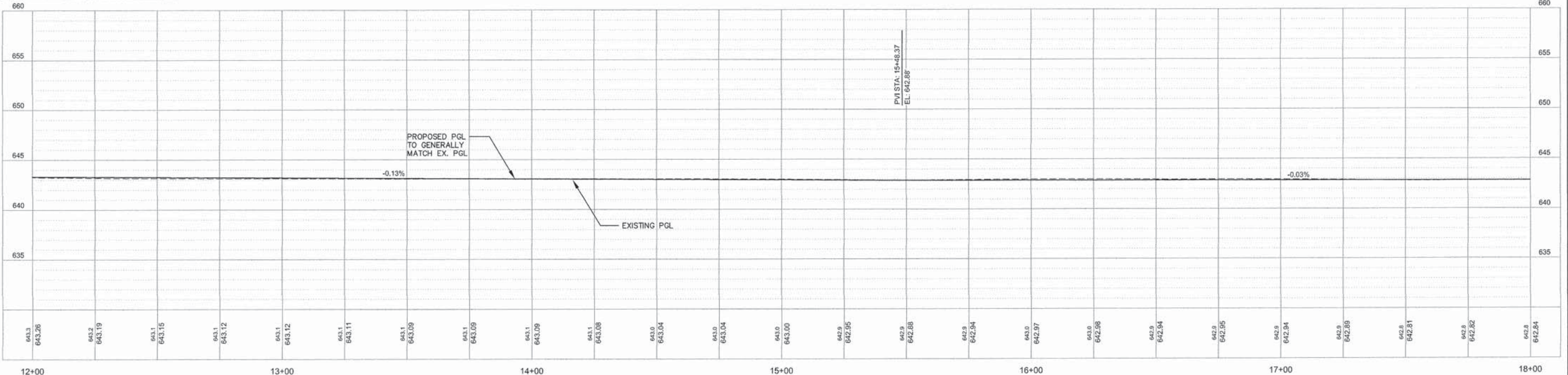
FILE NAME = ALIGNMENT.DWG	USER NAME = cityofpontiac	DESIGNED = BJV	REVISED =	STATE OF ILLINOIS DEPARTMENT OF TRANSPORTATION	PLAN AND PROFILES ROADWAY	F.A.U. RTE. = 5325/8	SECTION = 11-00100-00-WR	COUNTY = LIVINGSTON	TOTAL SHEETS = 19	SHEET NO. = 6	
	PLOT SCALE = 1" = 20'	CHECKED = JH	REVISED =			SCALE: 1"=20'	SHEET 6	OF 19 SHEETS	STA. 6+00	TO STA. 12+00	CONTRACT NO. 83516
	PLOT DATE = 032516	DATE = 032516	REVISED =			ILLINOIS FED. AID PROJECT					

Z:\Route 56 Spur (Route 4)\2014\Drawings\ALIGNMENT.dwg, 3/24/2016 4:08:44 PM, DWG To PDF.pc3

- LEGEND**
-  PROPOSED HMA PAVEMENT
 -  PROPOSED PCC BASE COURSE WIDENING
 -  PROPOSED AGGREGATE SHOULDER

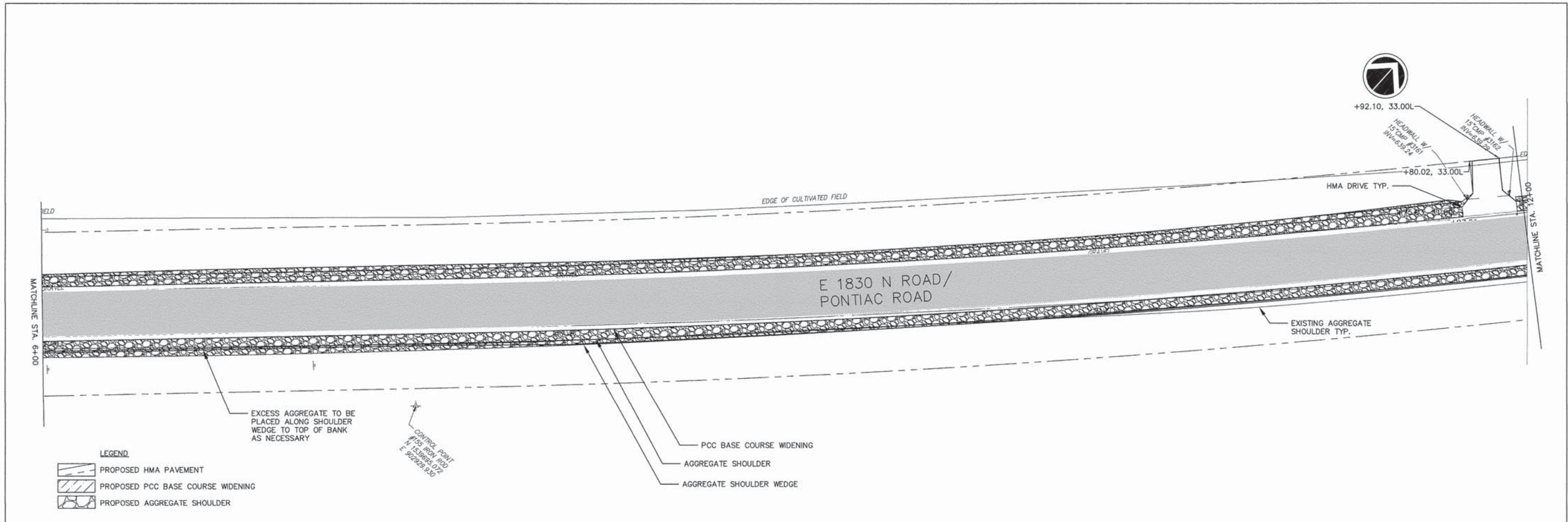


PROFILE VIEW OF ALIGNMENT - CL
 HORIZONTAL SCALE: 1" = 20'
 VERTICAL SCALE: 1" = 5'



FILE NAME = ALIGNMENT.DWG	USER NAME = city/pontiac	DESIGNED - BJV	REVISED -	STATE OF ILLINOIS DEPARTMENT OF TRANSPORTATION	PLAN AND PROFILES ROADWAY	F.A.U. RTE. = 5325/8	SECTION = 11-00100-00-WR	COUNTY = LIVINGSTON	TOTAL SHEETS = 19	SHEET NO. = 7	
	PLOT SCALE = 1" = 20'	DRAWN - BJV	REVISED -			SCALE: 1"=20'	SHEET 7 OF 19 SHEETS	CONTRACT NO. 27596		ILLINOIS FED. AID PROJECT	
	PLOT DATE = 032516	CHECKED - JH	REVISED -			STA. 12+00 TO STA. 18+00					
		DATE = 032516	REVISED -								

Z:\Route 65 Spur (Route 4)\2014\Drawings\ALIGNMENT.dwg, 3/24/2016 4:00:46 PM, DWG To PDF.pc3



LEGEND

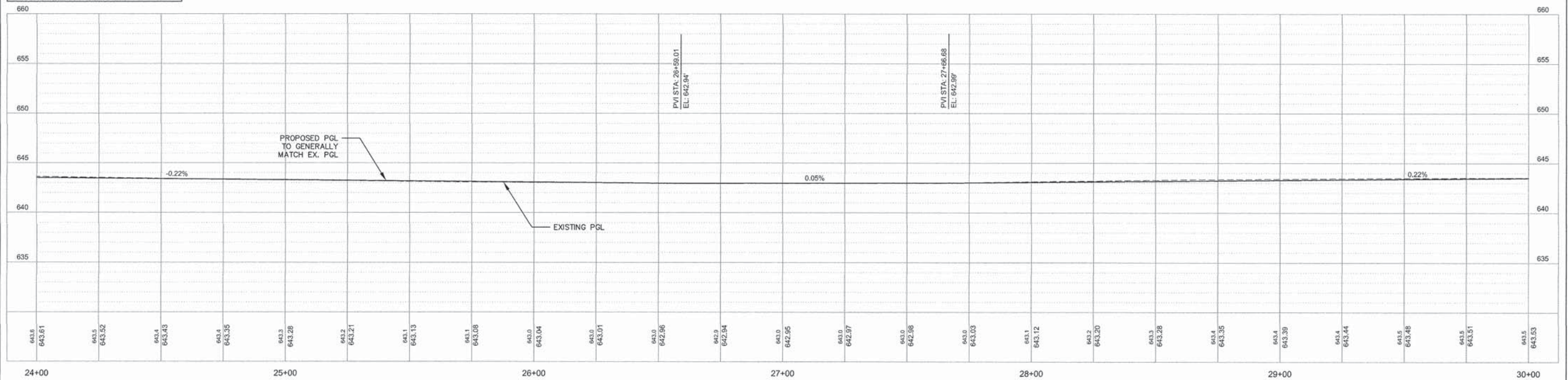
- PROPOSED HMA PAVEMENT
- PROPOSED PCC BASE COURSE WIDENING
- PROPOSED AGGREGATE SHOULDER

EXCESS AGGREGATE TO BE PLACED ALONG SHOULDER WEDGE TO TOP OF BANK AS NECESSARY

CONTROL POINT
#105 FROM P.O.D.
E. 1830 N RD
E. 1830 N RD

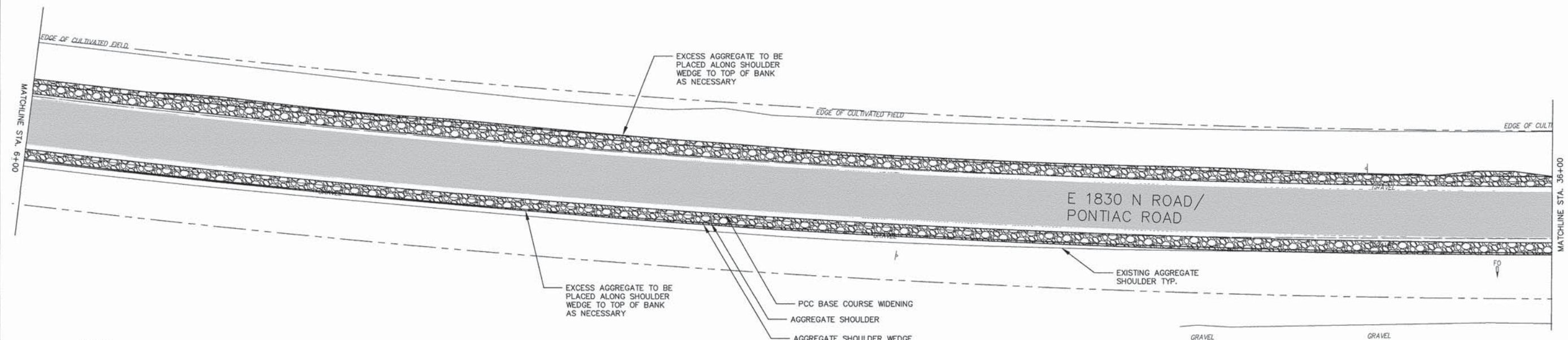
- PCC BASE COURSE WIDENING
- AGGREGATE SHOULDER
- AGGREGATE SHOULDER WEDGE

PROFILE VIEW OF ALIGNMENT - CL
HORIZONTAL SCALE: 1" = 20'
VERTICAL SCALE: 1" = 5'



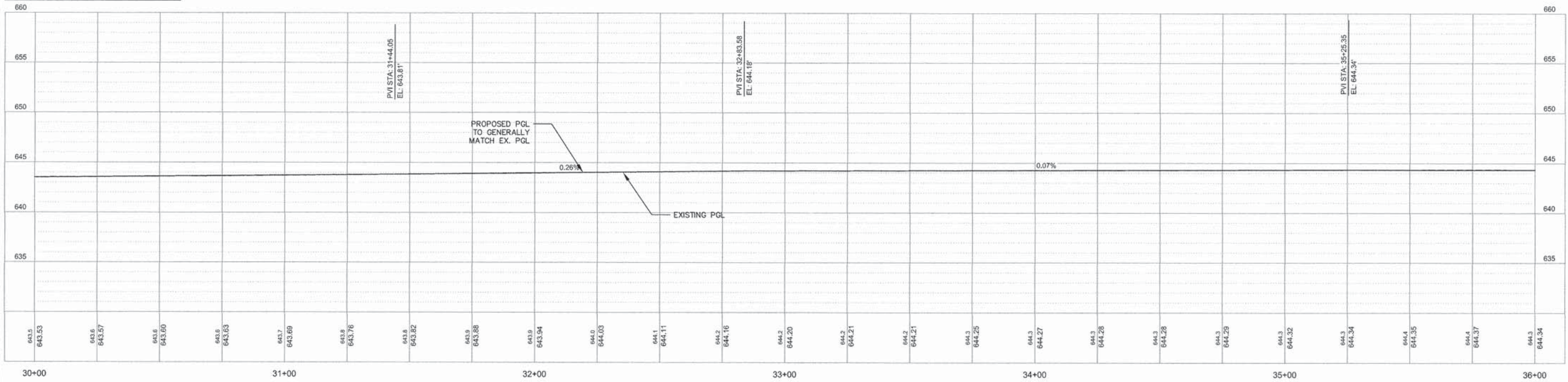
FILE NAME = ALIGNMENT.DWG	USER NAME = cityofpontiac	DESIGNED = BJV	REVISIONS	STATE OF ILLINOIS DEPARTMENT OF TRANSPORTATION	PLAN AND PROFILES ROADWAY	F.A.U. RTE. 5325/8	SECTION 11-00100-00-WR	COUNTY LIVINGSTON	TOTAL SHEETS 19	SHEET NO. 9	
	PLOT SCALE = 1" = 20'	CHECKED = JH	REVISIONS			SCALE: 1"=20'	SHEET 9 OF 19 SHEETS	CONTRACT NO. 81596		ILLINOIS FED. AID PROJECT	
	PLOT DATE = 032516	DATE = 032516	REVISIONS			STA. 24+00 TO STA. 30+00					

Z:\Route 66 Spur (Route 4)\2014\Drawings\ALIGNMENT.dwg, 3/24/2016 4:12:22 PM, DWG to PDF.pc3






- LEGEND**
- PROPOSED HMA PAVEMENT
 - PROPOSED PCC BASE COURSE WIDENING
 - PROPOSED AGGREGATE SHOULDER

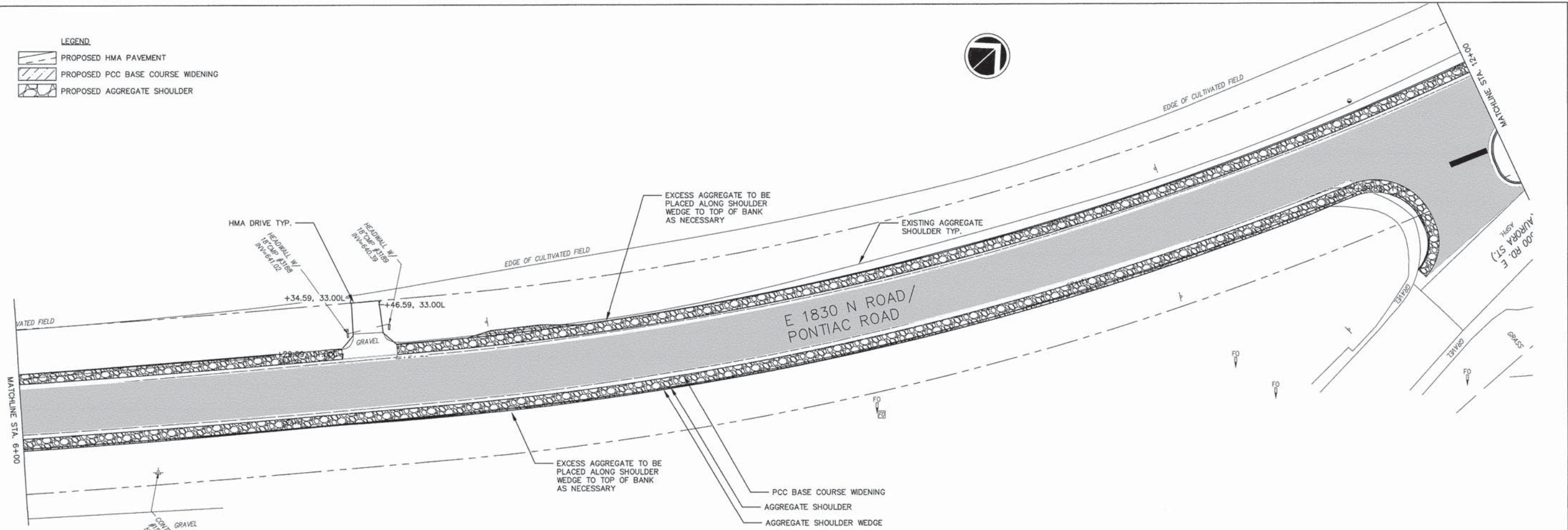
PROFILE VIEW OF ALIGNMENT - CL
 HORIZONTAL SCALE: 1" = 20'
 VERTICAL SCALE: 1" = 5'



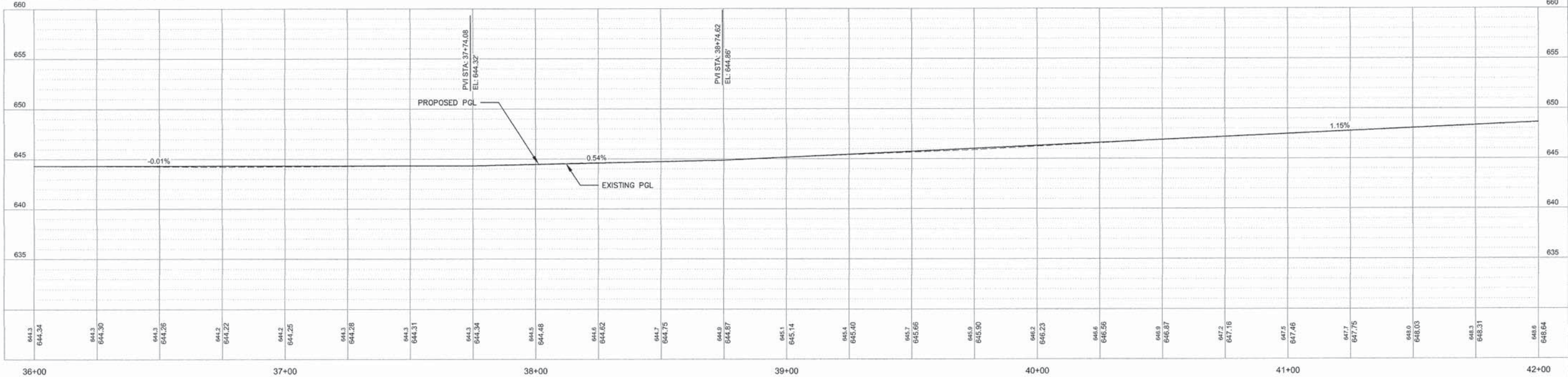
FILE NAME = ALIGNMENT.DWG	USER NAME = cityofpontiac	DESIGNED -- BJV	REVISED --	STATE OF ILLINOIS DEPARTMENT OF TRANSPORTATION	PLAN AND PROFILES ROADWAY	F.A.U. RTE. 5325/8	SECTION 11-00100-00-WR	COUNTY LIVINGSTON	TOTAL SHEETS 19	SHEET NO. 10	
	PLOT SCALE = 1" = 20'	DRAWN -- BJV	REVISED --			SCALE: 1"=20' SHEET 10 OF 19 SHEETS STA. 30+00 TO STA. 36+00		CONTRACT NO. 83596		ILLINOIS FED. AID PROJECT	
	PLOT DATE = 032516	CHECKED -- JH	REVISED --								
		DATE -- 032516	REVISED --								

Z:\Route 66 Spur (Route 4)\2014\Drawings\ALIGNMENT.dwg, 3/24/2016 4:13:23 PM, DWG To PDF.pc3

- LEGEND**
-  PROPOSED HMA PAVEMENT
 -  PROPOSED PCC BASE COURSE WIDENING
 -  PROPOSED AGGREGATE SHOULDER






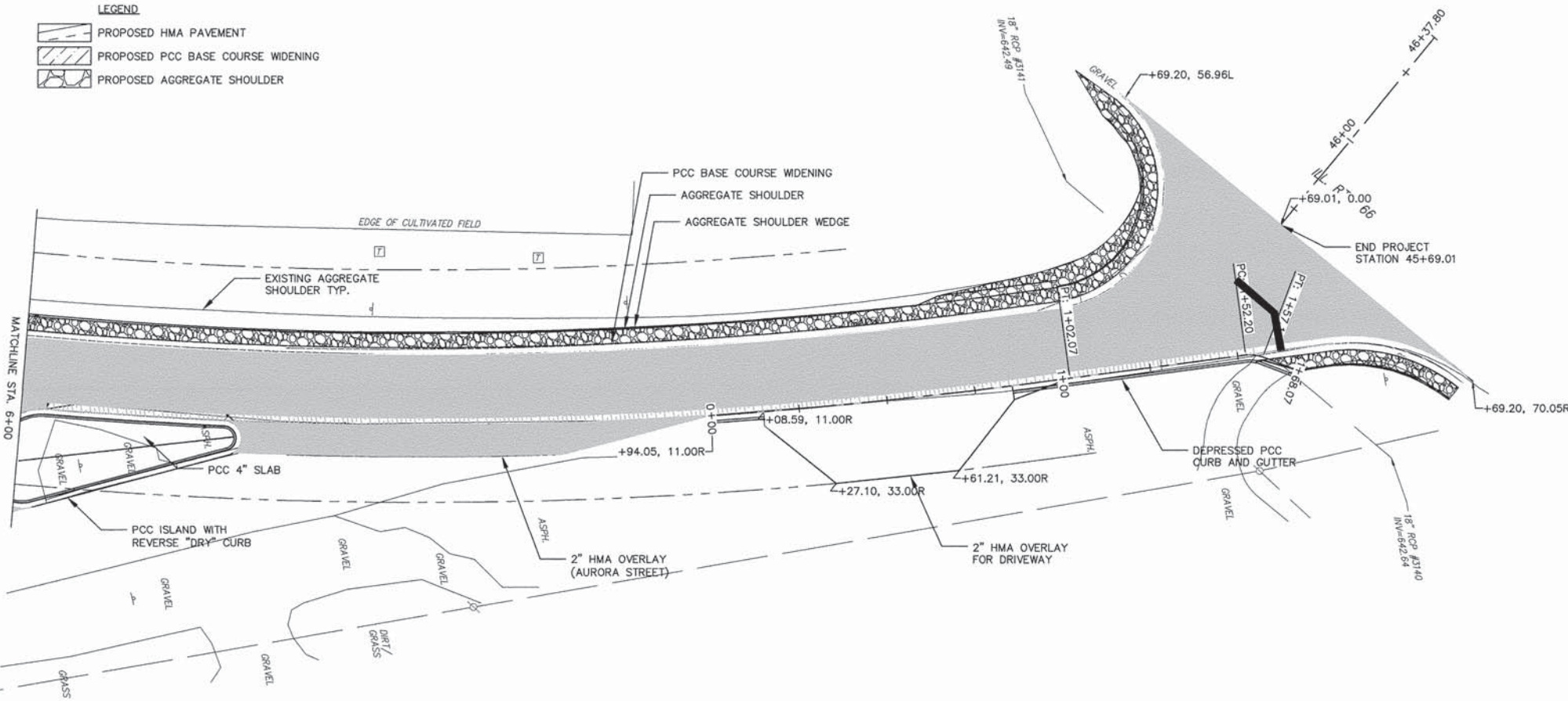
PROFILE VIEW OF ALIGNMENT - CL
 HORIZONTAL SCALE: 1" = 20'
 VERTICAL SCALE: 1" = 5'



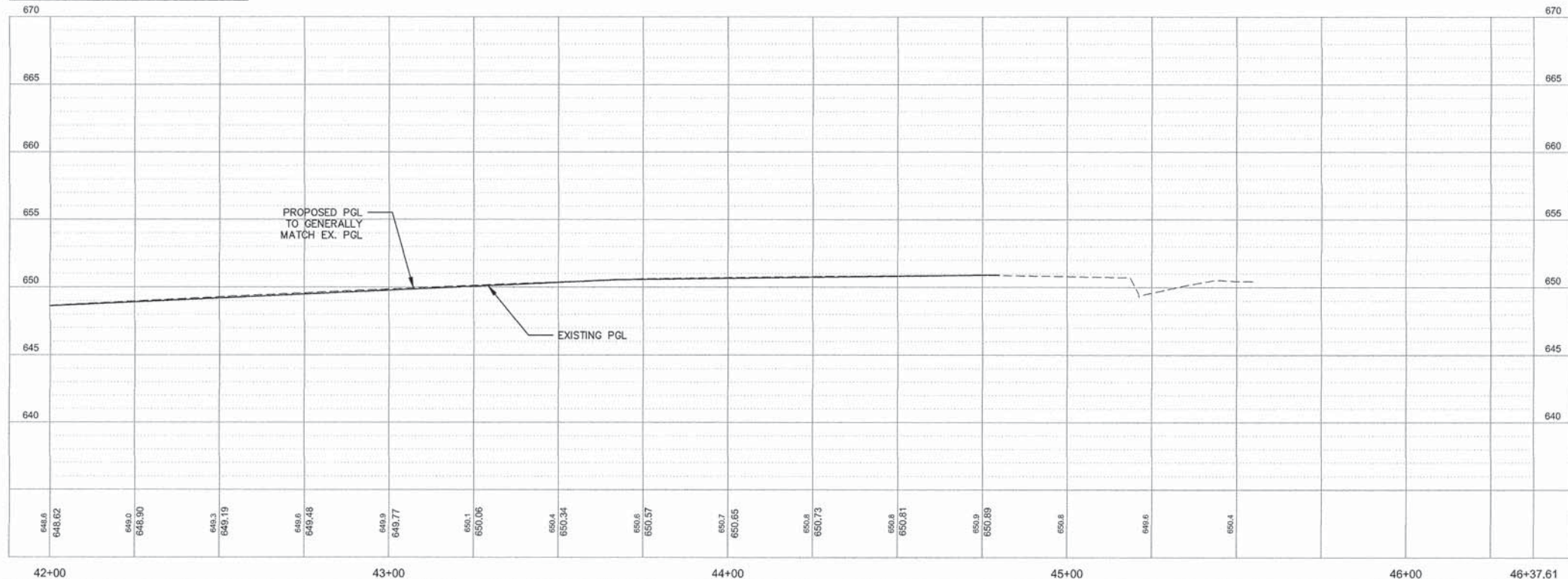
FILE NAME = ALIGNMENT.DWG	USER NAME = cityofpontiac	DESIGNED -- BJV	REVISED --	STATE OF ILLINOIS DEPARTMENT OF TRANSPORTATION	PLAN AND PROFILES ROADWAY	F.A.U. RTE. 5325/8	SECTION 11-00100-00-WR	COUNTY LIVINGSTON	TOTAL SHEETS 19	SHEET NO. 11	
	PLOT SCALE = 1" = 20'	DRAWN -- BJV	REVISED --			SCALE: 1"=20'	SHEET 11 OF 19 SHEETS	STA. 16+00 TO STA. 42+00	CONTRACT NO. 83596		ILLINOIS FED. AID PROJECT
	PLOT DATE = 032516	CHECKED -- JH	REVISED --								
		DATE -- 032516	REVISED --								

Z:\Route 56 Spur (Route 4)\2014\Drawings\ALIGNMENT.dwg, 3/24/2016 4:14:49 PM, DWG To PDF.pc3

- LEGEND**
-  PROPOSED HMA PAVEMENT
 -  PROPOSED PCC BASE COURSE WIDENING
 -  PROPOSED AGGREGATE SHOULDER



PROFILE VIEW OF ALIGNMENT - CL
 HORIZONTAL SCALE: 1" = 20'
 VERTICAL SCALE: 1" = 5'



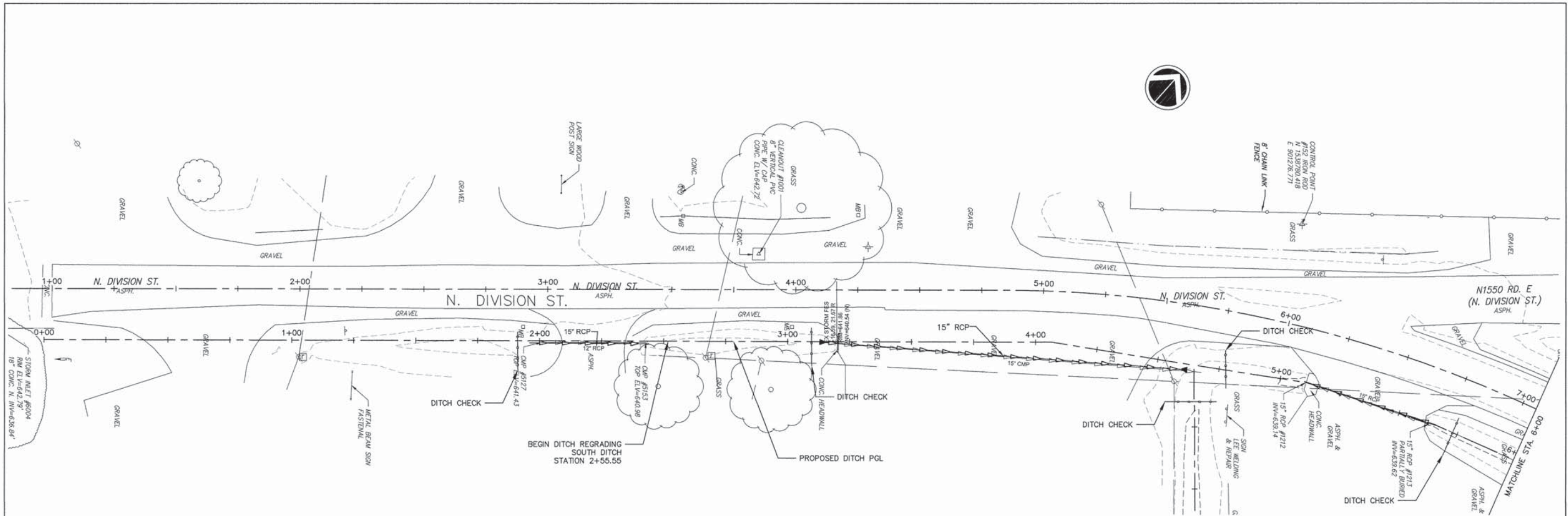
FILE NAME =	ALIGNMENT.DWG	USER NAME =	cityofpeotiac	DESIGNED =	BJV	REVISED =	
		DRAWN =	BJV	CHECKED =	JH	REVISOR =	
		PLOT SCALE =	1" = 20'	DATE =	021916		
		PLOT DATE =	021916				

STATE OF ILLINOIS
 DEPARTMENT OF TRANSPORTATION

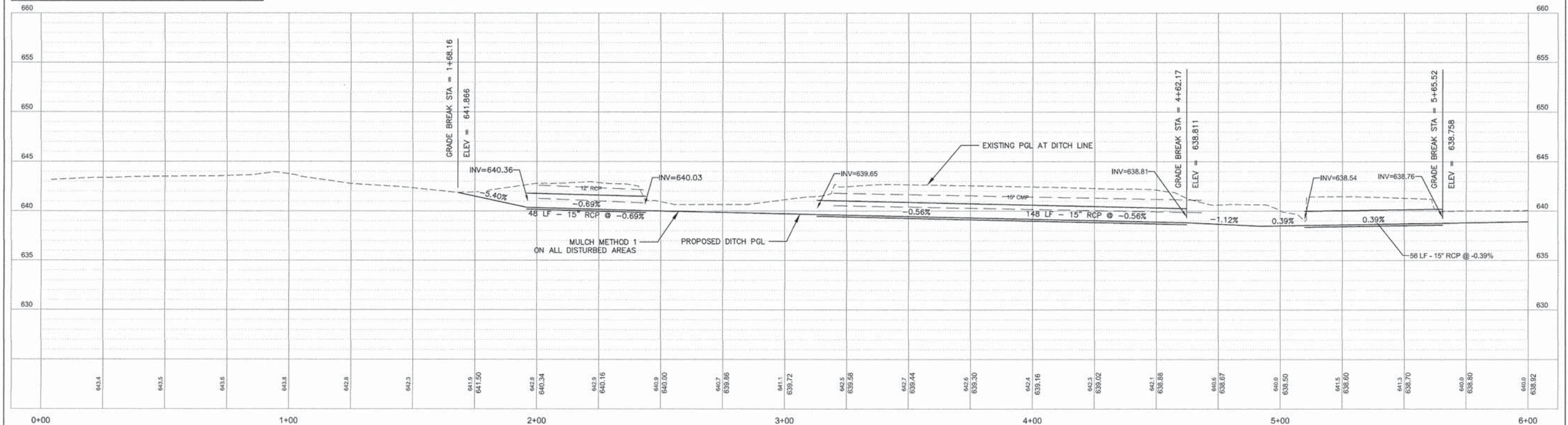
PLAN AND PROFILES ROADWAY

SCALE: 1"=20' SHEET 12 OF 19 SHEETS STA. 42+00 TO STA. 46+37.61

F.A.U. RTE.	SECTION	COUNTY	TOTAL SHEETS	SHEET NO.
3325/8	11-00100-00-WR	LIVINGSTON	19	12
CONTRACT NO. 81596			ILLINOIS FED. AID PROJECT	

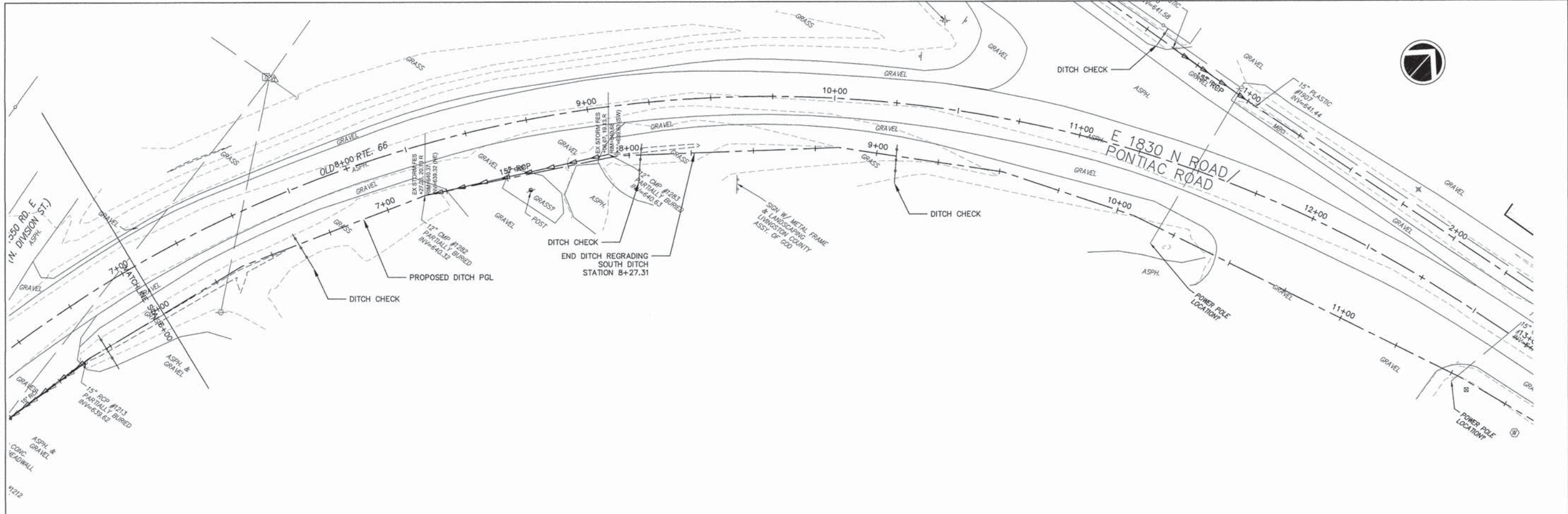


PROFILE VIEW OF ALIGNMENT - DITCH LINE SOUTH
 HORIZONTAL SCALE: 1" = 20'
 VERTICAL SCALE: 1" = 5'

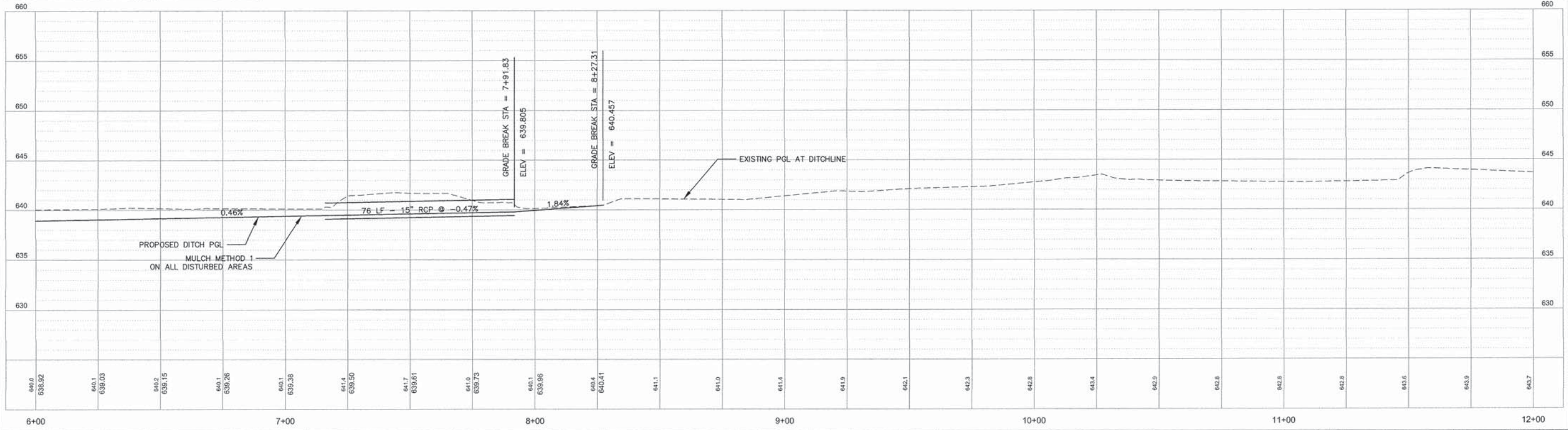


FILE NAME = DRAINAGE.DWG	USER NAME = cityofpottic	DESIGNED - BJV	REVISED -	STATE OF ILLINOIS DEPARTMENT OF TRANSPORTATION	PLAN AND PROFILES DITCHES	F.A.U. RT. = 6325/8	SECTION = 11-00100-00-WR	COUNTY = LIVINGSTON	TOTAL SHEETS = 19	SHEET NO. = 13	
	PLOT SCALE = 1" = 20'	CHECKED - JH	REVISED -			SCALE: 1"=20'	SHEET 13 OF 19 SHEETS	CONTRACT NO. 87596		ILLINOIS FED. AID PROJECT	
	PLOT DATE = 032516	DATE = 032516	REVISED -			STA. 0+00 TO STA. 6+00					

Z:\Route 66 Spur (Route 4)\2014\Draw\Drainage.dwg, 3/24/2016 4:25:01 PM, DWG To PDF.pc3

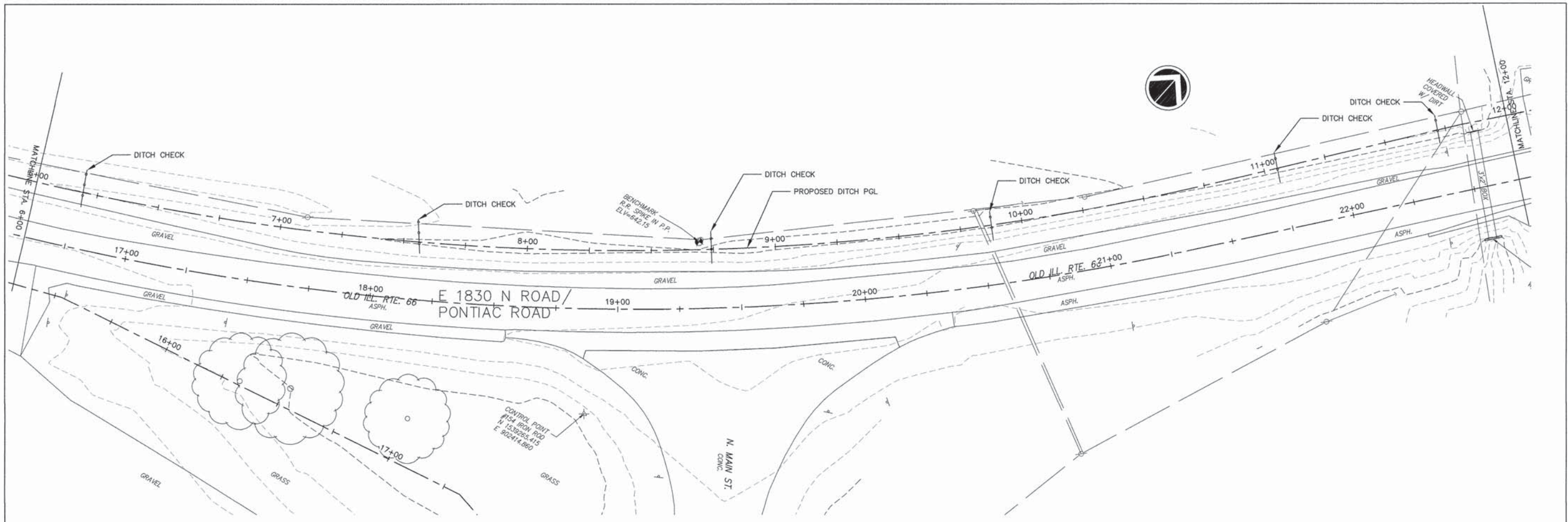


PROFILE VIEW OF ALIGNMENT - DITCH LINE SOUTH
 HORIZONTAL SCALE: 1" = 20'
 VERTICAL SCALE: 1" = 5'

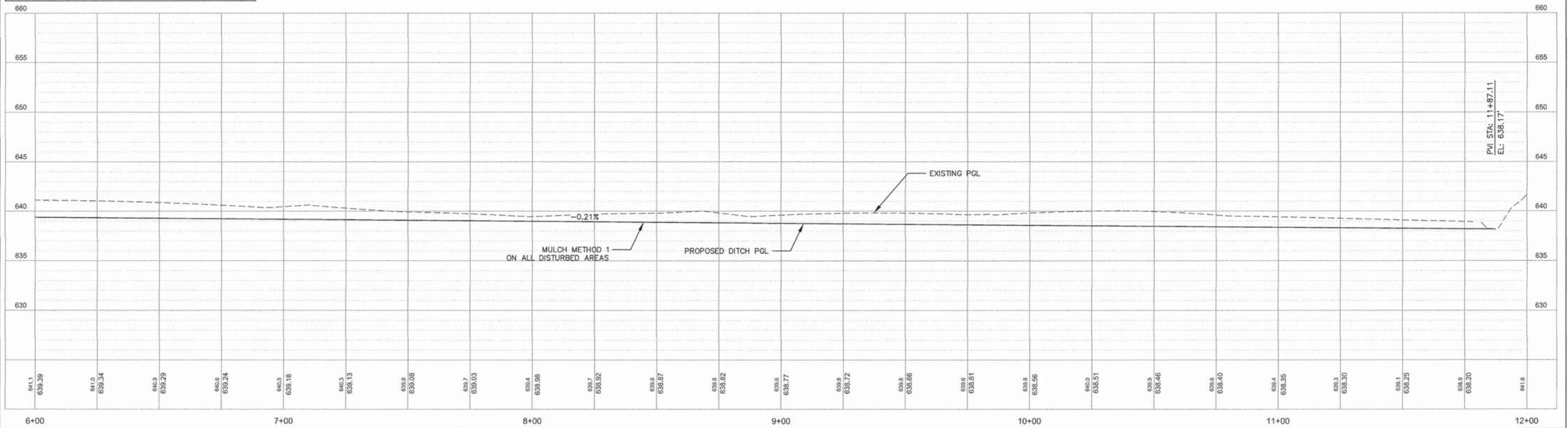


FILE NAME = DRAINAGE.DWG	USER NAME = djyelpontiac	DESIGNED - BJV	REVISED -	STATE OF ILLINOIS DEPARTMENT OF TRANSPORTATION	PLAN AND PROFILES DITCHES	F.A.U. RTE. 6325/B	SECTION 11-00100-00-WR	COUNTY LIVINGSTON	TOTAL SHEETS 19	SHEET NO. 14	
PLOT SCALE = 1" = 20'	CHECKED - JH	DATE - 032516	REVISED -			SCALE: 1"=20'	SHEET 14 OF 19 SHEETS	CONTRACT NO. 87596		ILLINOIS FED. AID PROJECT	
PLOT DATE = 032516						STA. 6+00 TO STA. 12+00					

Z:\Route 65 Spur (Route 41)\2014\Drawings\Drainage.dwg, 3/24/2016 4:25:58 PM, DWG To PDF.pc3

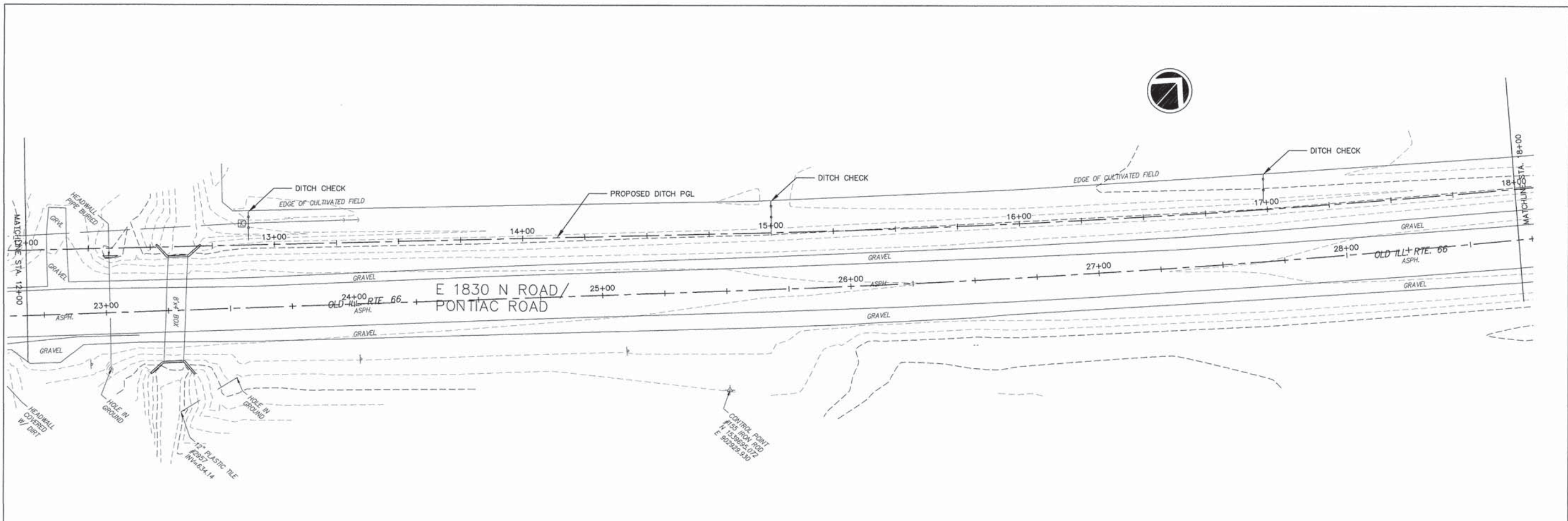


PROFILE VIEW OF ALIGNMENT - DITCHLINE NORTH
 HORIZONTAL SCALE: 1" = 20'
 VERTICAL SCALE: 1" = 5'

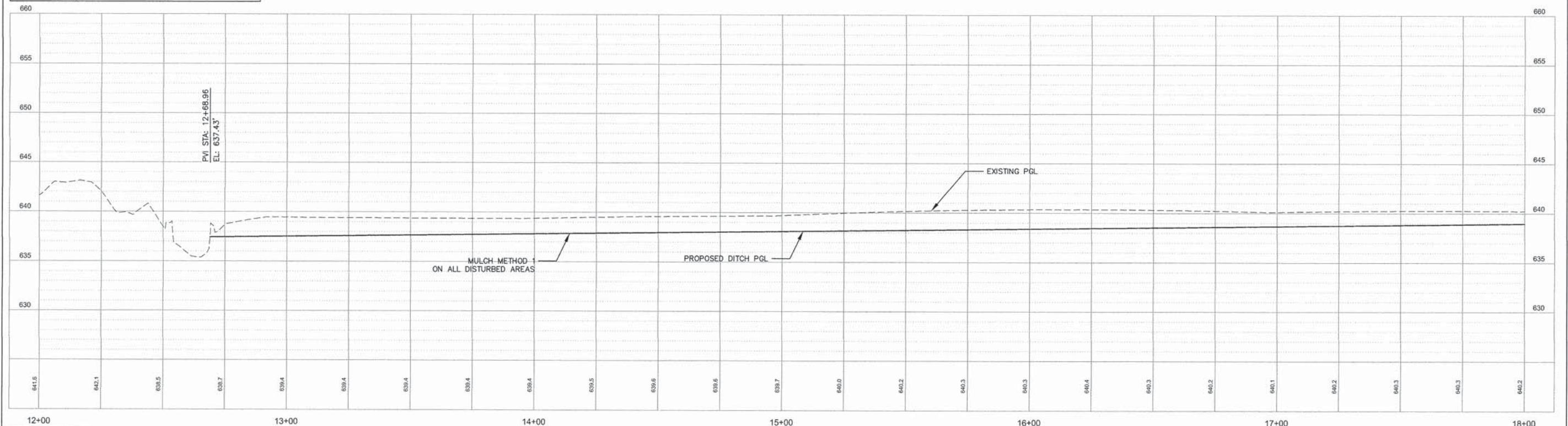


FILE NAME = DRAINAGE.DWG	USER NAME = cityofpontiac	DESIGNED -- BJV	REVISED --	STATE OF ILLINOIS DEPARTMENT OF TRANSPORTATION	PLAN AND PROFILES DITCHES	F.A.U. RTE. 6325/8	SECTION 11-00100-00-WR	COUNTY LIVINGSTON	TOTAL SHEETS 19	SHEET NO. 16	
	PLOT SCALE = 1" = 20'	CHECKED -- JH	REVISED --			SCALE: 1"=20'	SHEET 16 OF 19 SHEETS	CONTRACT NO. 84596		ILLINOIS FED. AID PROJECT	
	PLOT DATE = 032516	DATE -- 032516	REVISED --			STA. 6+00 TO STA. 12+00					

Z:\Route 66 Spur (Route 4)\2014\Drawings\Drainage.dwg, 3/24/2016 4:28:43 PM, DWG To PDF.pc3

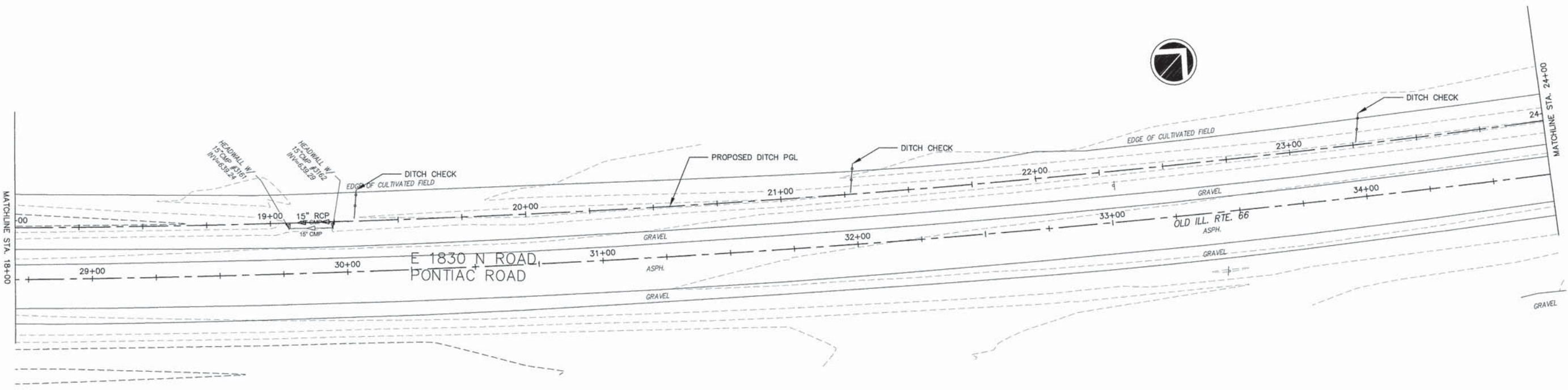


PROFILE VIEW OF ALIGNMENT - DITCHLINE NORTH
 HORIZONTAL SCALE: 1" = 20'
 VERTICAL SCALE: 1" = 5'

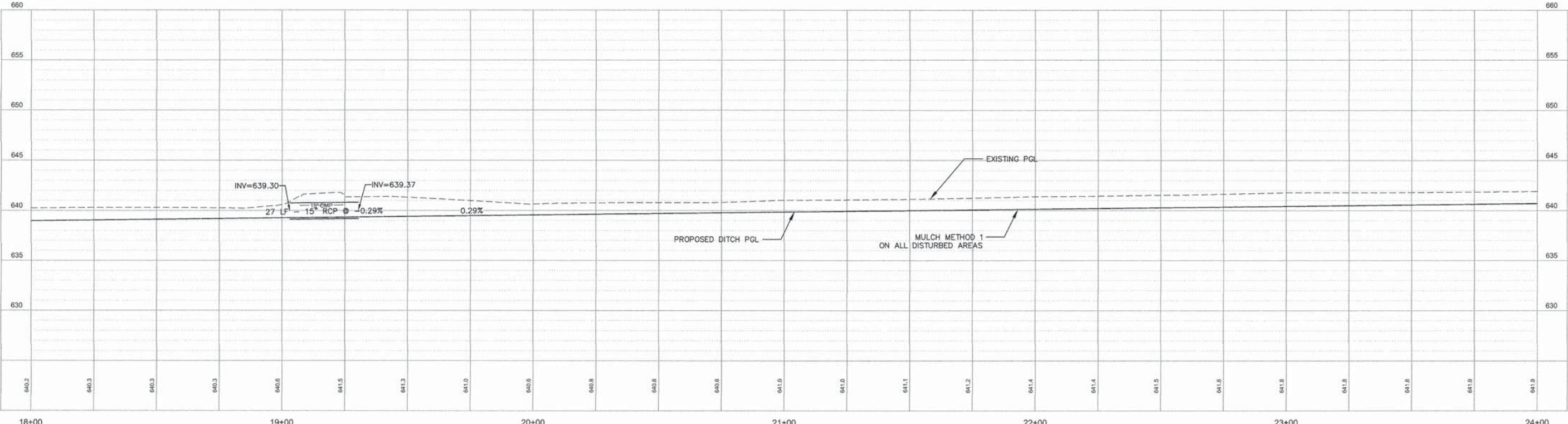


FILE NAME = DRAINAGE.DWG	USER NAME = cityofpontiac	DESIGNED -- BJV	REVISED --	STATE OF ILLINOIS DEPARTMENT OF TRANSPORTATION	PLAN AND PROFILES DITCHES	F.A.U. RTE. 6325/8	SECTION 11-00100-00-WR	COUNTY LIVINGSTON	TOTAL SHEETS 19	SHEET NO. 17	
	PLOT SCALE = 1" = 20'	DRAWN -- BJV	REVISED --			SCALE: 1"=20'	SHEET 17 OF 19 SHEETS	STA. 12+00 TO STA. 18+00		CONTRACT NO. 87596	
	PLOT DATE = 032516	CHECKED -- JH	REVISED --			ILLINOIS FED. AID PROJECT					
		DATE -- 032516	REVISED --								

Z:\Route 66 Spur (Route 4)\2014\Drawings\Drainage.dwg, 3/24/2016 4:28:06 PM, DWG To PDF.pc3



PROFILE VIEW OF ALIGNMENT - DITCHLINE NORTH
 HORIZONTAL SCALE: 1" = 20'
 VERTICAL SCALE: 1" = 5'



FILE NAME = DRAINAGE.DWG	USER NAME = cityofpontiac	DESIGNED -- BJV	REVISED --
		DRAWN -- BJV	REVISED --
	PLOT SCALE = 1" = 20'	CHECKED -- JH	REVISED --
	PLOT DATE = 032516	DATE -- 032516	REVISED --

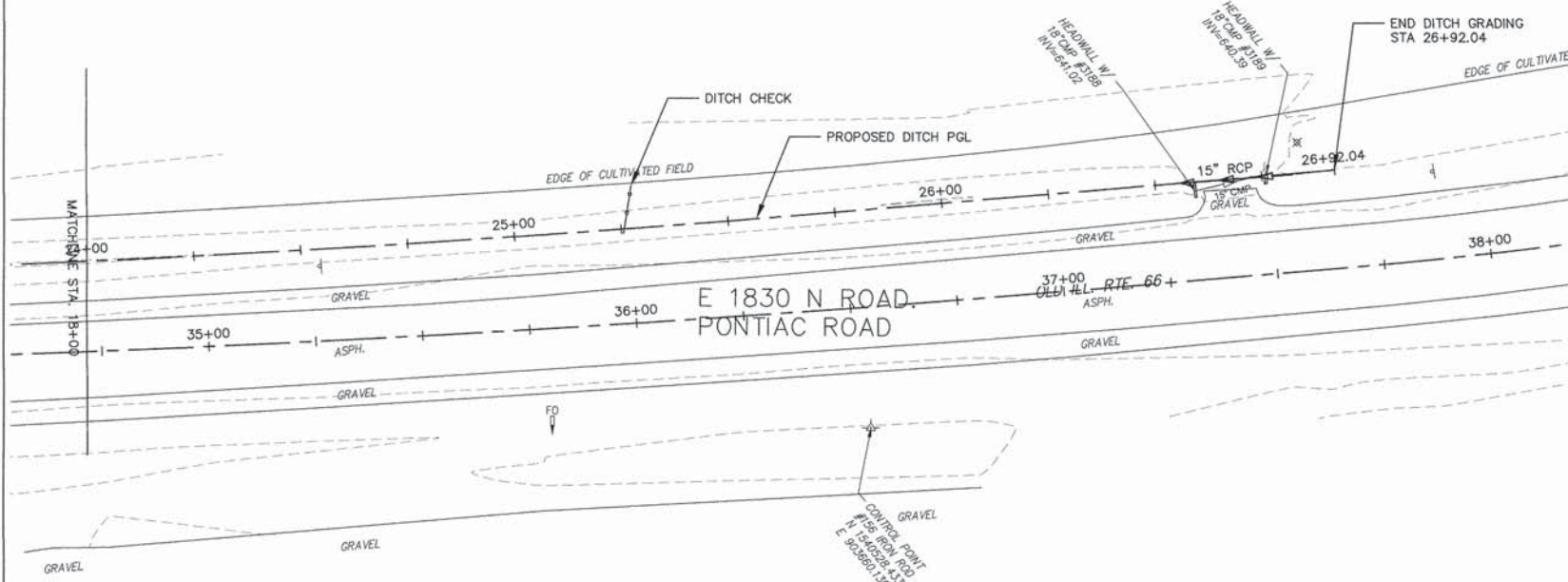
STATE OF ILLINOIS
 DEPARTMENT OF TRANSPORTATION

PLAN AND PROFILES DITCHES

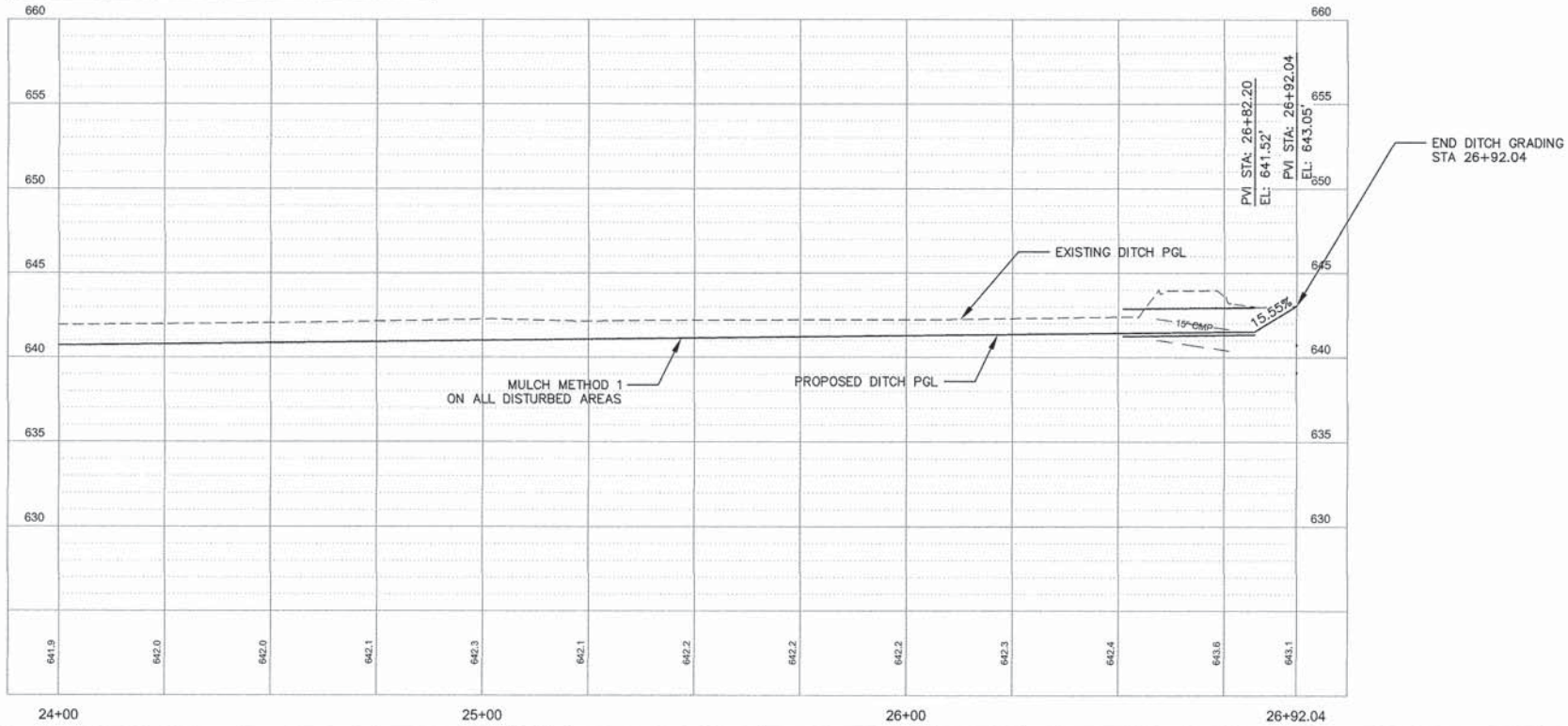
SCALE: 1"=20' SHEET 18 OF 19 SHEETS STA. 18+00 TO STA. 24+00

F.A.U. RTE. 6325/8	SECTION 11-00100-00-WR	COUNTY LIVINGSTON	TOTAL SHEETS 19	SHEET NO. 18
CONTRACT NO. 83596			ILLINOIS FED. AID PROJECT	

Z:\Route 66 Spur (Route 4)\2014\Drawings\Drainage.dwg, 3/24/2016 4:29:57 PM, DWG To PDF.pc3



PROFILE VIEW OF ALIGNMENT - DITCHLINE NORTH
 HORIZONTAL SCALE: 1" = 20'
 VERTICAL SCALE: 1" = 5'



FILE NAME = DRAINAGE.DWG	USER NAME = cityofpontiac	DESIGNED -- BJV	REVISED --	STATE OF ILLINOIS DEPARTMENT OF TRANSPORTATION	PLAN AND PROFILES DITCHES	F.A.U. RTE. 6325/8	SECTION 11-00100-00-WR	COUNTY LIVINGSTON	TOTAL SHEETS 19	SHEET NO. 19	
	PLOT SCALE = 1" = 20'	CHECKED -- JH	REVISED --			SCALE: 1" = 20'	SHEET 19 OF 19 SHEETS	CONTRACT NO. 87596		ILLINOIS FED. AID PROJECT	
	PLOT DATE = 032516	DATE -- 032516	REVISED --			STA. 24+00 TO STA. 26+92.04					

Z:\Route 66 Spur (Route 4)\2014\Drawings\Drainage.dwg, 3/24/2016 4:31:19 PM, DWG To PDF.pc3