

F. A. P. NO.	SECTION	COUNTY	TOTAL SHEETS	SHEET NO.
68	13-00167-00-LS	LASALLE	30	01
STA.	TO STA.			
FED. ROAD DIST. NO.	ILLINOIS	FED. AID PROJECT	TE-00D3(096)	

INDEX OF SHEETS

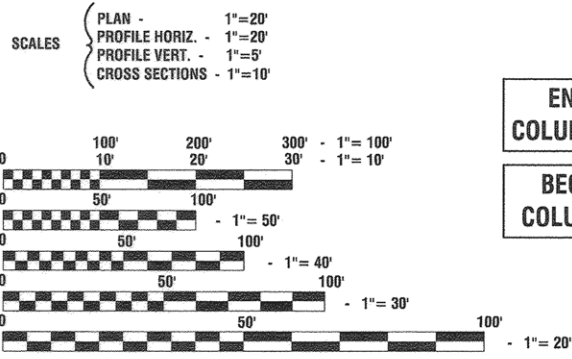
- 1. COVER SHEET
- 2. GENERAL NOTES
- 3.-5. SUMMARY OF QUANTITIES
- 6. TYPICAL CROSS SECTIONS
- 7.-10. EXISTING AND PROPOSED PLAN VIEWS
- 11.-14. DRAINAGE AND UTILITIES PLANS
- 15.-16. LANDSCAPING PLANS
- 17.-18. PAVEMENT MARKING PLANS
- 19.-22. STREET LIGHTING PLANS
- 23.-28. STREET LIGHTING DETAILS
- 29.-30. CONSTRUCTION AND DISTRICT 3 DETAILS

HIGHWAY STANDARDS

- 000001-06 STANDARD SYMBOLS, ABBREVIATIONS AND PATTERNS
- 280001-07 TEMPORARY EROSION CONTROL SYSTEMS
- 424001-08 PERPENDICULAR CURB RAMPS
- 424011-02 CORNER PARALLEL CURB RAMPS
- 424016-02 MID BLOCK CURB RAMPS
- 442201-03 CLASS C AND D PATCHES
- 602001-02 CATCH BASIN, TYPE A
- 602011-02 CATCH BASIN, TYPE C
- 602301-04 INLET, TYPE A
- 602401-03 MANHOLE, TYPE A
- 602701-02 MANHOLE STEPS
- 604001-04 FRAME AND LIDS TYPE 1
- 604086-03 FRAME AND GRATE TYPE 23
- 606001-06 CONCRETE CURB TYPE B AND COMBINATION CONCRETE CURB AND GUTTER
- 701427-04 LANE CLOSURE, MULTILANE, INTERMITTENT OR MOVING OPER., FOR SPEEDS ≤ 40 MPH
- 701701-10 URBAN LANE CLOSURE, MULTILANE INTERSECTION
- 701801-06 SIDEWALK, CORNER OR CROSSWALK CLOSURE
- 701901-05 TRAFFIC CONTROL DEVICES
- 720006-04 SIGN PANEL ERECTION DETAILS
- 728001-01 TELESCOPING STEEL SIGN SUPPORT
- 731001-01 BASE FOR TELESCOPING STEEL SIGN SUPPORT
- 780001-05 TYPICAL PAVEMENT MARKINGS

821101-01 LUMINAIRE WIRING DIAGRAM
 825021-03 LIGHTING CONTROLLER BASE MOUNTED, 240V

Revised 6-7-16
 DESIGN DESIGNATION - COLUMBUS ST ADT = 12300 (2015)
 EXISTING SPEED LIMIT: 30 MPH
 PROPOSED SPEED LIMIT: 30 MPH
 FUNCTIONAL CLASSIFICATION - COLLECTOR



FULL SIZE PLANS HAVE BEEN PREPARED USING STANDARD ENGINEERING SCALES, REDUCED SIZED PLANS WILL NOT CONFORM TO STANDARD SCALES, IN MAKING MEASUREMENTS ON REDUCED PLANS, THE ABOVE SCALES MAY BE USED.

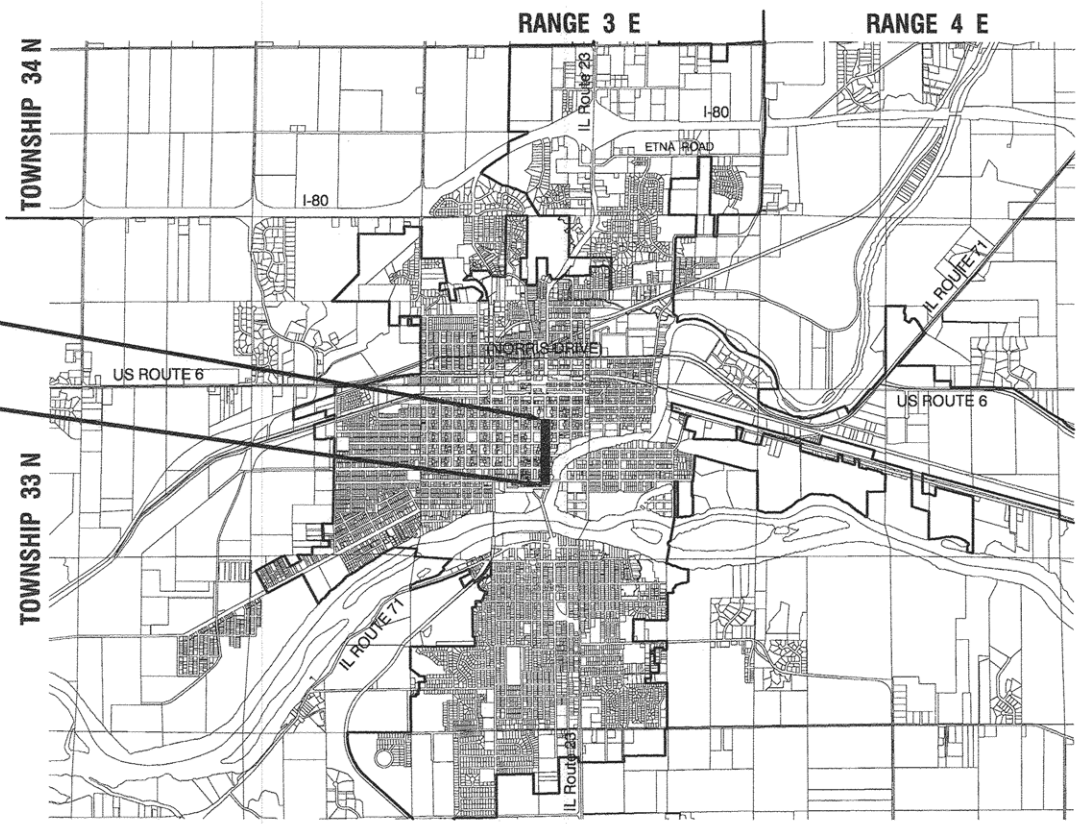
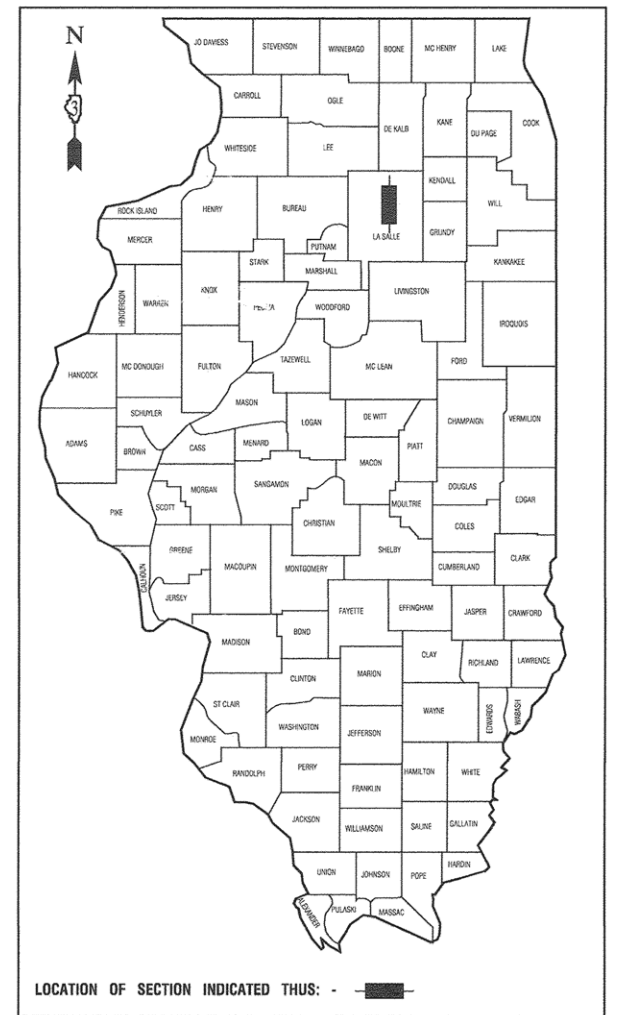
J. U. L. I. E.
 JOINT UTILITY LOCATION INFORMATION FOR EXCAVATION
 1-800-892-0123 or 811

CONTRACT NO. 87635

STATE OF ILLINOIS
 DEPARTMENT OF TRANSPORTATION
 DIVISION OF HIGHWAYS

**PLANS FOR PROPOSED
 FEDERAL AID HIGHWAY**

**IL 23/COLUMBUS STREET (FAP 68) FROM LINCOLN
 PLACE TO LAFAYETTE STREET (FAU 6025)
 ILLINOIS TRANSPORTATION ENHANCEMENT PROGRAM
 LIGHTING AND BEAUTIFICATION
 PROJECT NO.: TE-00D3(096)
 SECTION NO.: 13-00167-00-LS
 JOB NO.: C-93-021-16
 CITY of OTTAWA
 LASALLE COUNTY**



END IMPROVEMENTS
 COLUMBUS ST - STA 19+50
 BEGIN IMPROVEMENTS
 COLUMBUS ST - STA 1+50

LOCATION MAP

GROSS LENGTH=1,800 FEET=0.341 MILES
 NET LENGTH=1,800 FEET=0.341 MILES

SCALE: N.T.S.

STATE OF ILLINOIS DEPARTMENT OF TRANSPORTATION
 DIVISION OF HIGHWAYS

Approved: [Signature] 3/24/16
 City Engineer, City of Ottawa

Passed: [Signature] 3/29/16
 District 3 Engineer of Local Roads & Streets

Released for Bid Based on Limited Review: [Signature] 3/29/16
 Region 2 Engineer

PRINTED BY THE AUTHORITY OF
 THE STATE OF ILLINOIS

PREPARED BY OR UNDER THE
 DIRECT SUPERVISION OF:
 [Signature] 3/23/16



CONSULTANTS: ROBINSON ENGINEERING, LTD. 708-331-6700

SUMMARY OF QUANTITIES					ROADWAY	SAFETY	LANDSCAPE
S.I.	CODE NO.	PAY ITEM	UNIT	QUAN	CONSTRUCTION TYPE CODE		
					0005	0021	0031
△	*	81028200 UNDERGROUND CONDUIT, GALVANIZED STEEL, 2" DIA.	FOOT	600		600	
△	*	81028240 UNDERGROUND CONDUIT, GALVANIZED STEEL, 4" DIA.	FOOT	50		50	
△		81603090 UNIT DUCT, 600V, 3-1/C NO.4, 1/C NO.6 GROUND, (XLP-TYPE USE), 1 1/4" DIA. POLYETHYLENE	FOOT	3600		3600	
△		81702440 ELECTRIC CABLE IN CONDUIT, 600V(XLP-TYPE USE) 3-1/C NO. 1/0	FOOT	285		285	
△	*	82500350 LIGHTING CONTROLLER, BASE MOUNTED, 240VOLT, 100AMP	EACH	1		1	
△		82500370 LIGHTING CONTROLLER, BASE MOUNTED, 240VOLT, 200AMP	EACH	1		1	
△	*	83600350 LIGHT POLE FOUNDATION, METAL, 11" BOLT CIRCLE, 8" X 6'	EACH	14		14	
△	*	89502376 REBUILD EXISTING HANDHOLE	EACH	19		19	
△		A2002816 TREE, CATALPA SPECIOSA (NORTHERN CATALPA), 2" CALIPER, BALLED AND BURLAPPED	EACH	5			5
△		A2002916 TREE, CELTIS OCCIDENTALIS (COMMON HACKBERRY), 2" CALIPER, BALLED AND BURLAPPED	EACH	4			4
△		A2004416 TREE, GINKGO BILOBA (GINKGO), 2" CALIPER, BALLED AND BURLAPPED	EACH	4			4
△		A2004619 TREE, GLEDITSIA TRIACANTHOS VAR. INERMIS IMPERIAL (IMPERIAL THORNLESS HONEYLOCUST), 1-3/4" CALIPER, BALLED AND BURLAPPED	EACH	4			4
△		A2004716 TREE, GLEDITSIA TRIACANTHOS INERMIS SHADEMASTER (SHADEMASTER THORNLESS COMMON HONEYLOCUST), 2" CALIPER, BALLED AND BURLAPPED	EACH	3			3
△		A2005016 TREE, GYMNOCLADUS DIOICUS (KENTUCKY COFFEETREE), 2" CALIPER, BALLED AND BURLAPPED	EACH	3			3
△		A2007014 TREE, QUERCUS ROBUR FASTIGIATA (FASTIGIATE ENGLISH OAK), 1-3/4" CALIPER, BALLED AND BURLAPPED	EACH	3			3
△		A2018718 TREE, ULMUS CARPINIFOLIA MORTON, (ACCOLADE ELM), 2" CALIPER, BALLED AND BURLAPPED	EACH	3			3
△		A2008518 TREE, ULMUS MORTON GLOSSY (TRIUMPH ELM), 2" CALIPER, BALLED AND BURLAPPED	EACH	5			5
△		A2018726 TREE, ULMUS CARPINIFOLIA NEW HORIZON (NEW HORIZON SMOOTHLEAF ELM), 2" CALIPER, BALLED AND BURLAPPED	EACH	3			3
	*	X4401198 HOT-MIX ASPHALT SURFACE REMOVAL, VARIABLE DEPTH	SQ YD	4450	4450		
	*	X6028050 SANITARY MANHOLES TO BE ADJUSTED	EACH	9	9		
	*	X6028624 VALVE BOXES TO BE ADJUSTED (SPECIAL)	EACH	15	15		
	*	X7010216 TRAFFIC CONTROL AND PROTECTION, (SPECIAL)	LSUM	1		1	
△		X7830072 GROOVING FOR RECESSED PAVEMENT MARKING 6"	FOOT	160		160	
△	*	XX007295 LIGHTING UNIT A, COMPLETE	EACH	20		20	
△	*	XX007295 LIGHTING UNIT B, COMPLETE	EACH	2		2	
△	*	XX007295 LIGHTS, PEDESTRIAN	EACH	14		14	
△	*	XX009104 LIGHT POLE FOUNDATION, METAL, 12" BOLT CIRCLE, 8" X 6'	EACH	20		20	

* - INDICATES SPECIALTY ITEMS

FILE NAME = 13290-QJAH-01 - IDOT P03

USER NAME =
DESIGNED -- JRA/WRD
CHECKED -- JRA/WRD
PLOT SCALE =
DRAWN -- KM
PLOT DATE = 03-23-16
CHECKED -- AG

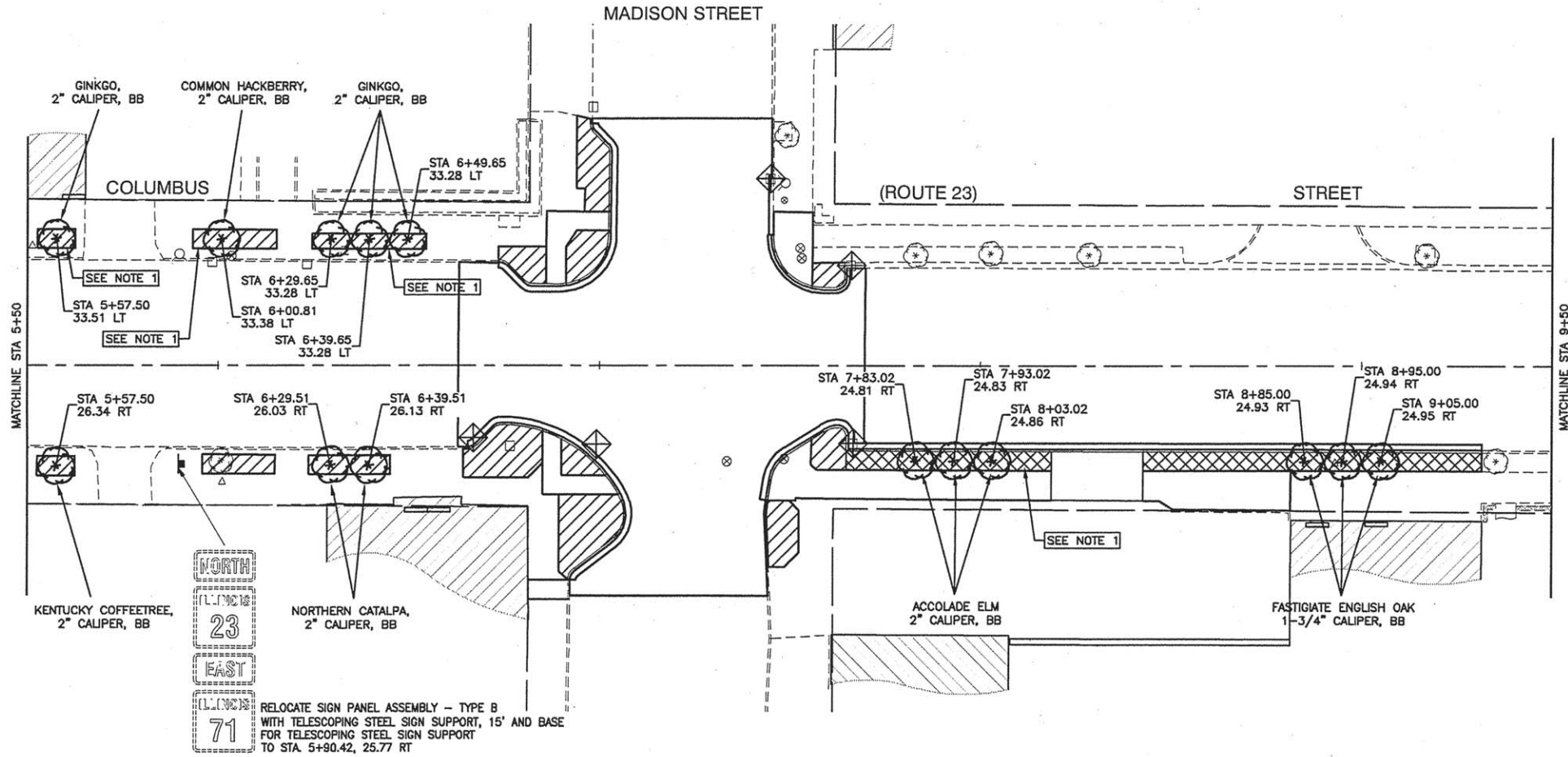
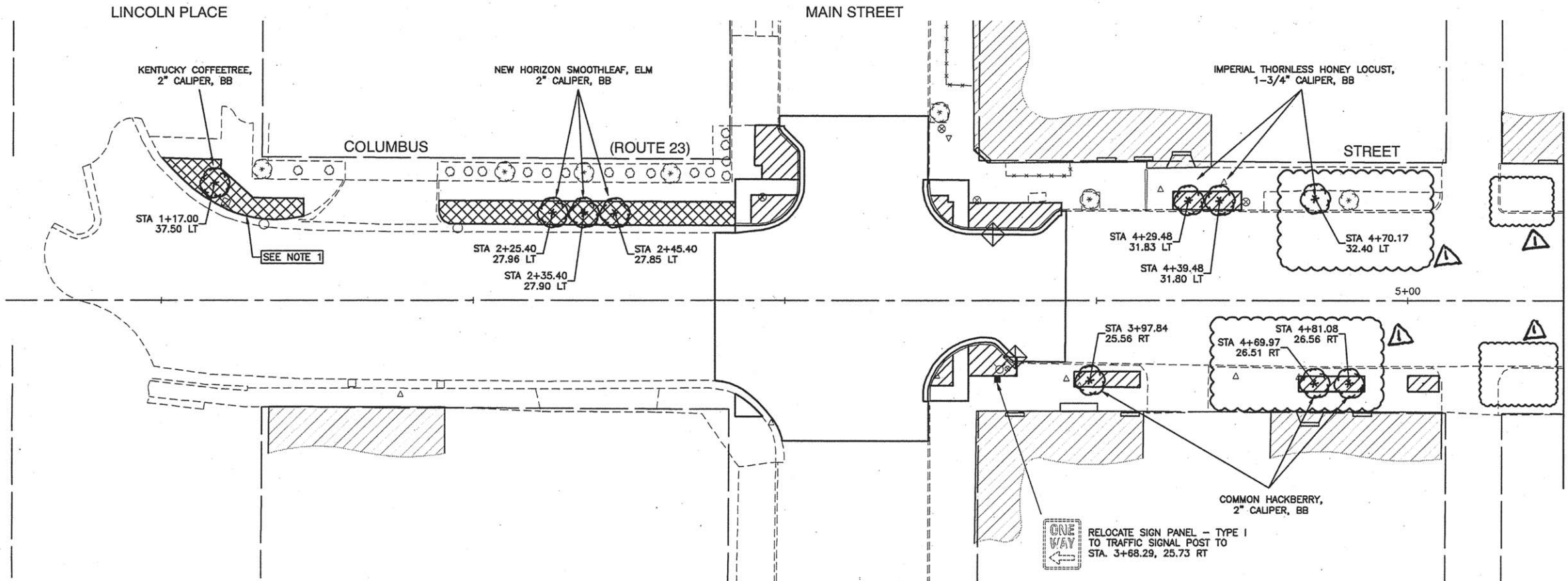
REVISED -- **6-7-16**
REVISED --
REVISED --
REVISED --

STATE OF ILLINOIS
DEPARTMENT OF TRANSPORTATION

GENERAL NOTES

SCALE: SHEET NO. 05 OF 30 SHEETS STA. TO STA.

F.A.P. RTE.	SECTION	COUNTY	TOTAL SHEETS	SHEET NO.
68	13-00167-00-LS	LASALLE	30	05
CONTRACT NO. 87635				
FED. ROAD DIST. NO. 3 ILLINOIS FED. AID PROJECT TE-0003 (096)				



Location	Earth Excavation Cubic Yard	Non-Special Waste Disposal Cubic Yard
Sta. 0+50 to Sta. 5+50	34	9
Sta. 5+50 to Sta. 9+50	15	13
Sta. 9+50 to Sta. 13+50	12	37
Sta. 13+50 to Sta. 19+50		9
Total	61	68

NOTES

- EXCAVATED SOIL AT THIS LOCATION SHALL BE MANAGED OFF-SITE AS A NON-SPECIAL WASTE.

LEGEND

- INLET FILTER
- PROPOSED TREE (COLUMNAR SHADE TREE)
- TOPSOIL (9" OR 24") AND SODDING AREA (SEE SPECIAL PROVISIONS)
- LANDSCAPE PLANTING AREA (TOPSOIL, 9", 12", 24") (SEE SPECIAL PROVISIONS)

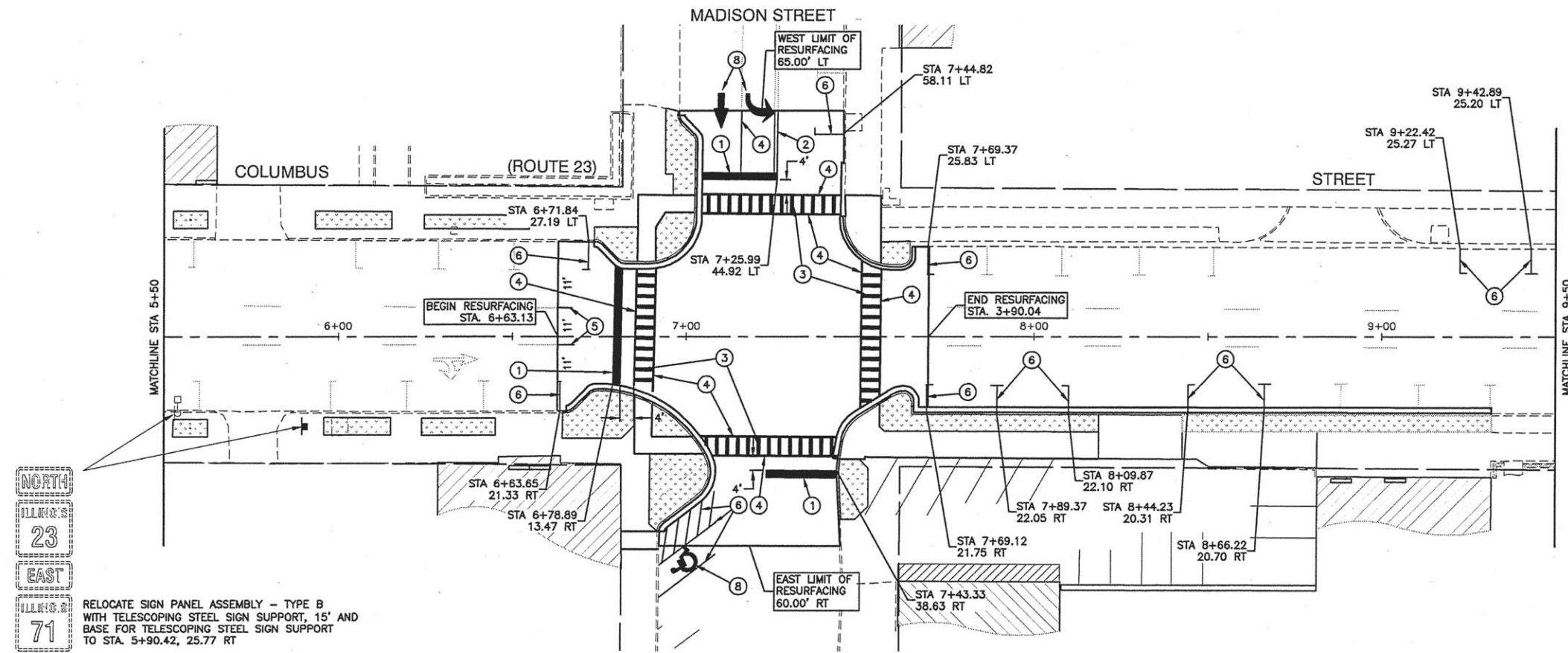
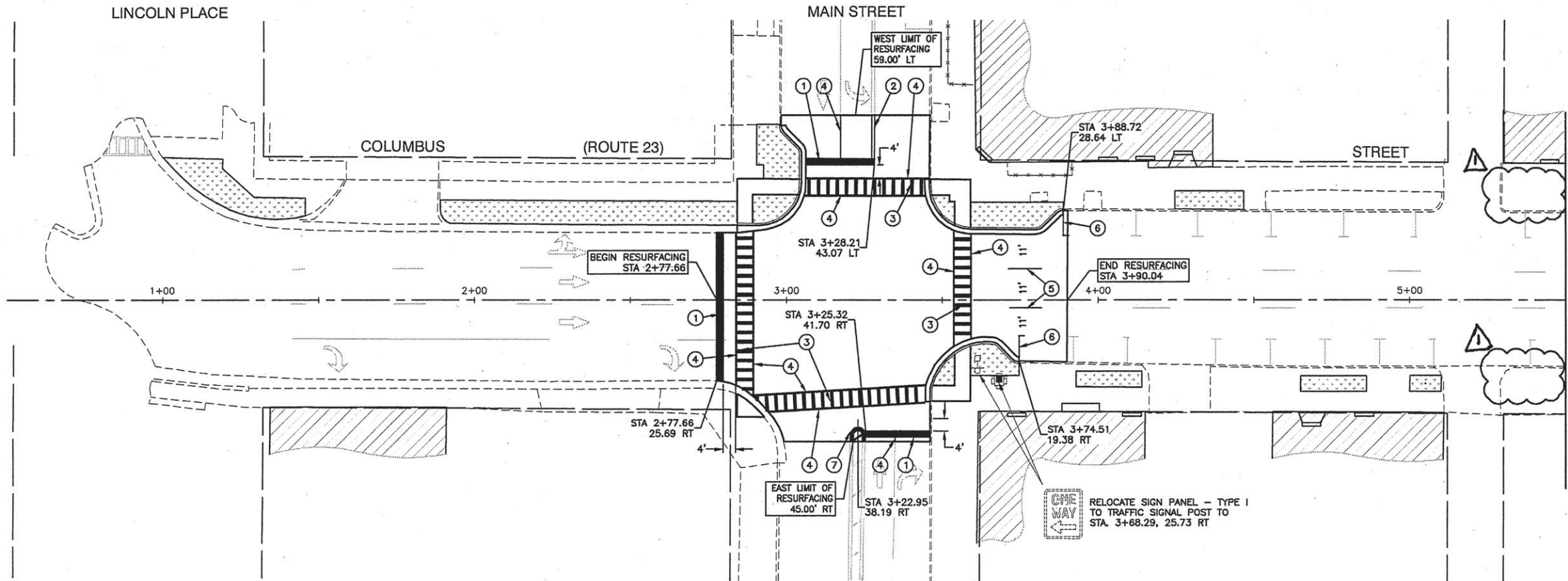
FILE NAME = 13290-LNSC-01 - P01

USER NAME =	DESIGNED -- JRA/WPD	REVISED -- AG-7-16
PLOT SCALE =	CHECKED -- PKB	REVISED --
PLOT DATE = 03-23-16	DRAWN -- JJB/KWM	REVISED --
	CHECKED -- APG	REVISED --

STATE OF ILLINOIS
DEPARTMENT OF TRANSPORTATION

COLUMBUS STREET LIGHTING & BEAUTIFICATION
COLUMBUS STREET AT MAIN STREET/MADISON STREET
LANDSCAPING PLAN
SCALE: 1"= 20' SHEET NO. 15 OF 30 SHEETS STA. 0+50 TO STA. 9+50

F.A.P. RTE.	SECTION	COUNTY	TOTAL SHEETS	SHEET NO.
68	13-00167-00-LS	LASALLE	30	15
CONTRACT NO. 87635				
FED. ROAD DIST. NO. 3 ILLINOIS FED. AID PROJECT TE-00D3(090)				



NOTE:
CONTRACTOR SHALL COORDINATE WITH THE CITY OF OTTAWA TO RELOCATED ANY SIGNS.

PAVEMENT MARKING LEGEND

- ① 24" WHITE STOP BAR
- ② DOUBLE YELLOW MEDIAN OUTLINE (11" C/C)
- ③ 12" WHITE CROSSWALK LINE (3' C/C)
- ④ 6" WHITE LANE LINE
- ⑤ PREFORMED PLASTIC PAVEMENT MARKING, TYPE B - LINE 6" WITH GROOVING FOR RECESSED PAVEMENT MARKING, 6" (10' LINE - 30' SPACE)
- ⑥ 4" WHITE PARKING LINE
- ⑦ 12" YELLOW MEDIAN LINE
- ⑧ WHITE LETTERS & SYMBOLS



RELOCATE SIGN PANEL ASSEMBLY - TYPE B WITH TELESCOPING STEEL SIGN SUPPORT, 15' AND BASE FOR TELESCOPING STEEL SIGN SUPPORT TO STA. 5+90.42, 25.77 RT

FILE NAME = 13299-PMKG-01 - P01

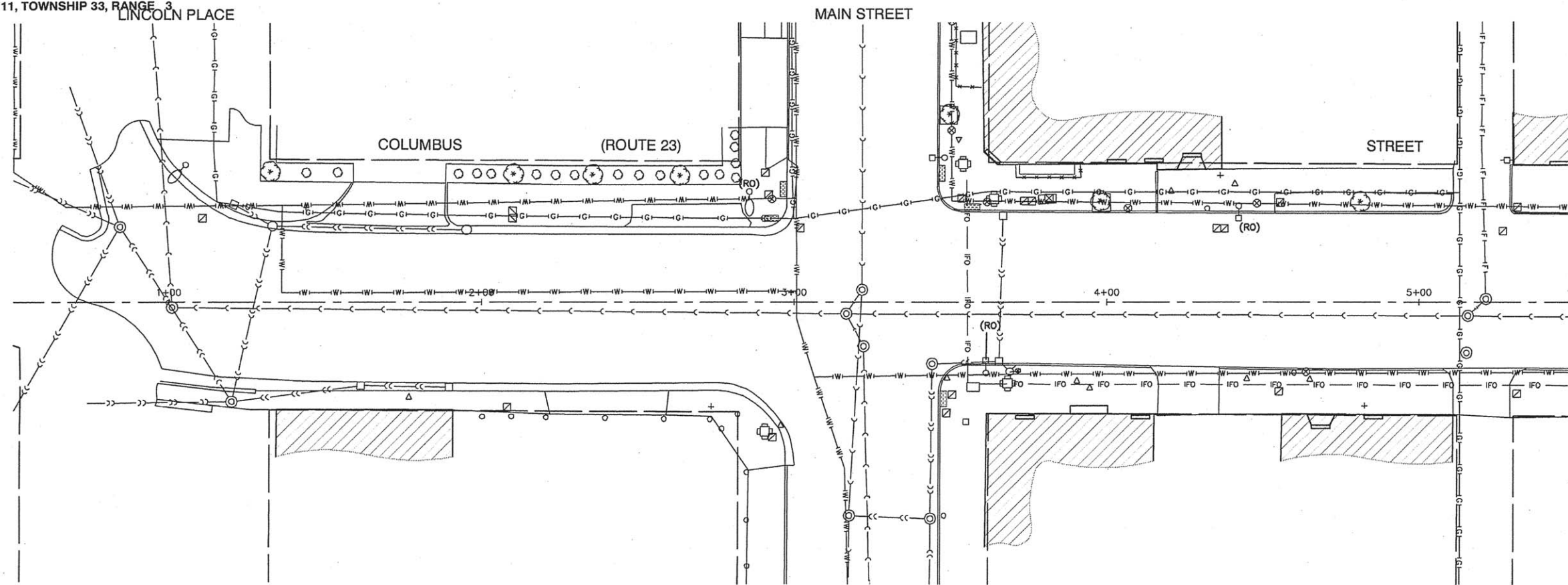
USER NAME =	DESIGNED - JRA/WPD	REVISED - 6-7-16
PLOT SCALE =	CHECKED - PKB	REVISED -
PLOT DATE = 03-23-16	DRAWN - JJB/KWM	REVISED -
	CHECKED - APG	REVISED -

STATE OF ILLINOIS
DEPARTMENT OF TRANSPORTATION

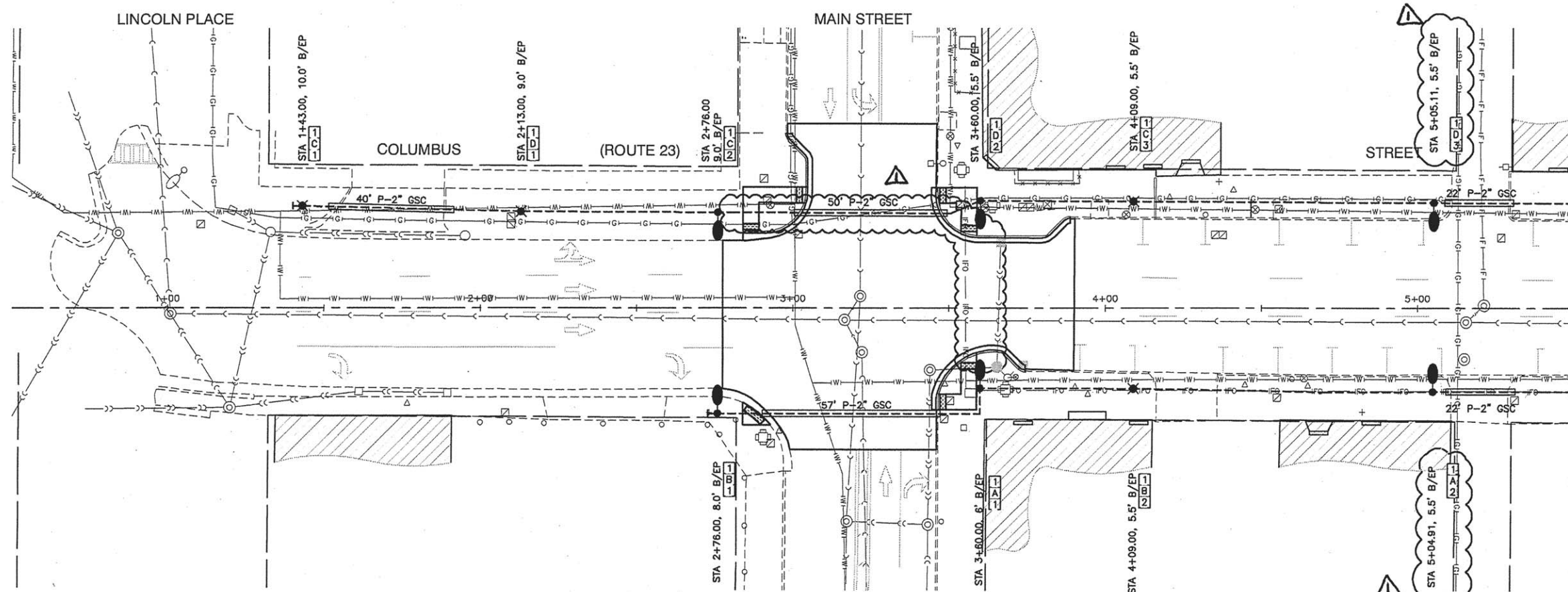
COLUMBUS STREET LIGHTING & BEAUTIFICATION
COLUMBUS STREET AT MAIN STREET/MADISON STREET
PAVEMENT MARKING

SCALE: 1" = 20' SHEET NO. 17 OF 30 SHEETS STA. 0+50 TO STA. 9+50

F.A.P. RTE.	SECTION	COUNTY	TOTAL SHEETS	SHEET NO.
68	13-00167-00-LS	LASALLE	30	17
CONTRACT NO. 87635				
FED. ROAD DIST. NO. 3 ILLINOIS FED. AID PROJECT TE-003(092)				



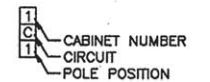
EXISTING CONDITIONS



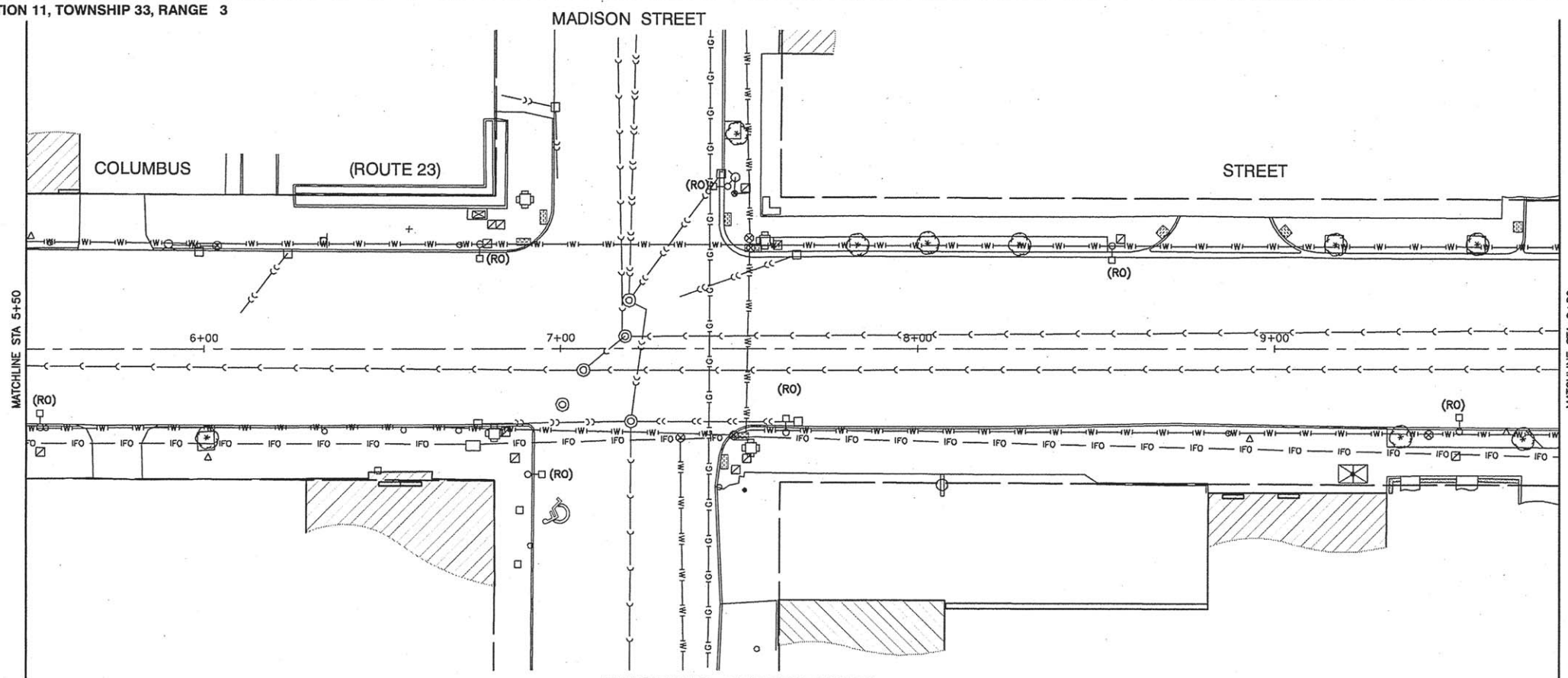
PROPOSED IMPROVEMENTS

- LEGEND:**
- EXISTING STREET LIGHT
 - EXISTING STREET LIGHT
 - ⊗ PROPOSED LIGHTS, PEDESTRIAN
 - PROPOSED LIGHTING UNIT A, COMPLETE
 - PROPOSED CONTROL CABINET
 - +— CAPPED RACEWAY FOR FUTURE EXPANSION
 - GSC UNDERGROUND CONDUIT, GALVANIZED STEEL (GSC)
 - UNIT DUCT, 3-1/C, NO.4 AWG AND 1/C NO.6 GROUND, 600V IN 1-1/4" DBSL
 - (RO) REMOVAL OF EXISTING STREET LIGHT BY OTHERS BEHIND EXISTING EDGE OF PAVEMENT

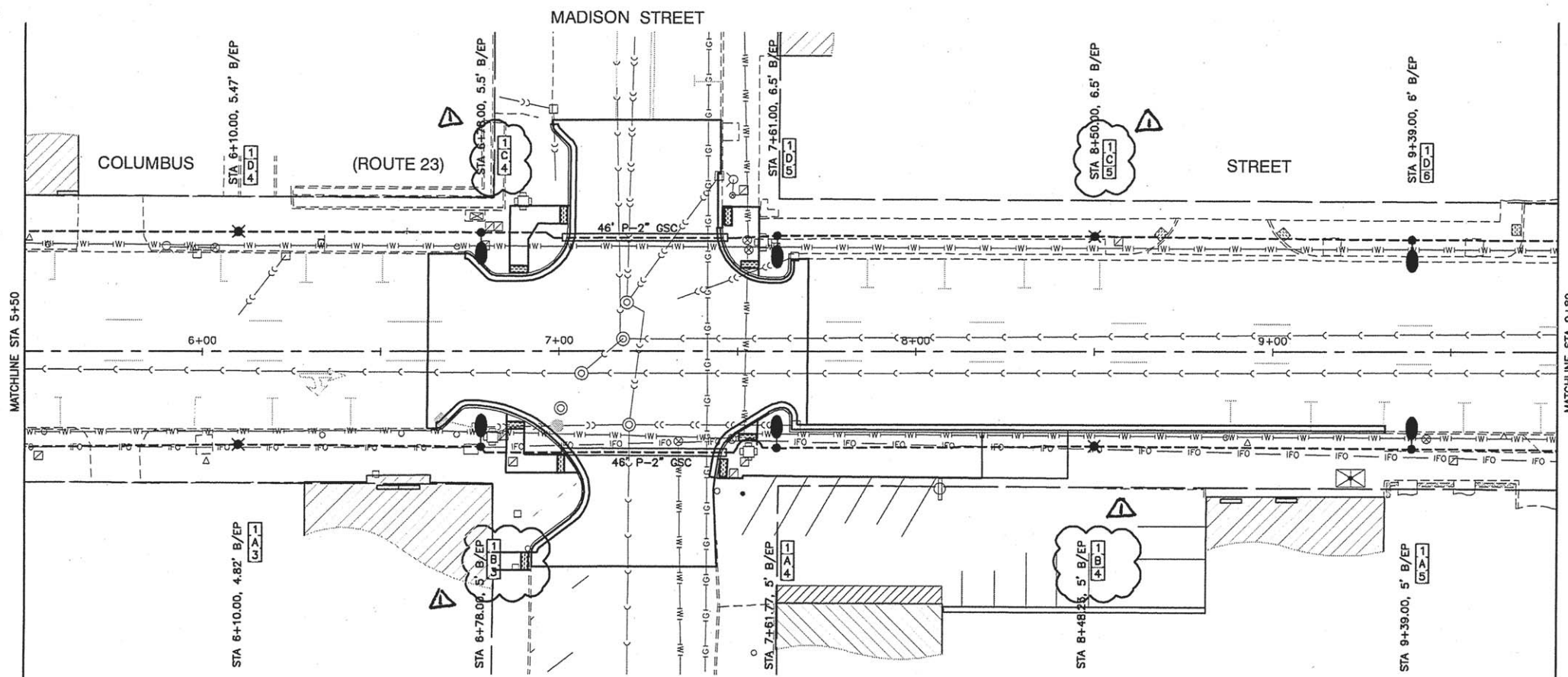
POLE IDENTIFICATION



FILE NAME = 13290-LGHT-01 -P01	USER NAME =	DESIGNED — JRA/WPD	REVISED — 6-2-16	STATE OF ILLINOIS DEPARTMENT OF TRANSPORTATION	COLUMBUS STREET LIGHTING & BEAUTIFICATION COLUMBUS STREET AT MAIN STREET STREET LIGHTING		F.A.P. RTE. 68	SECTION 13-00167-00-LS	COUNTY LASALLE	TOTAL SHEETS 30	SHEET NO. 19	
PLOT SCALE =	DRAWN — JJB	CHECKED — PKB	REVISED —		SCALE: 1"= 20'	SHEET NO. 19 OF 30 SHEETS	STA. TO STA.	CONTRACT NO. 87635				
PLOT DATE = 03-23-16	CHECKED — ACAD	REVISED —	REVISED —		FED. ROAD DIST. NO. 3 ILLINOIS FED. AID PROJECT TE-003-09(a)							



EXISTING CONDITIONS



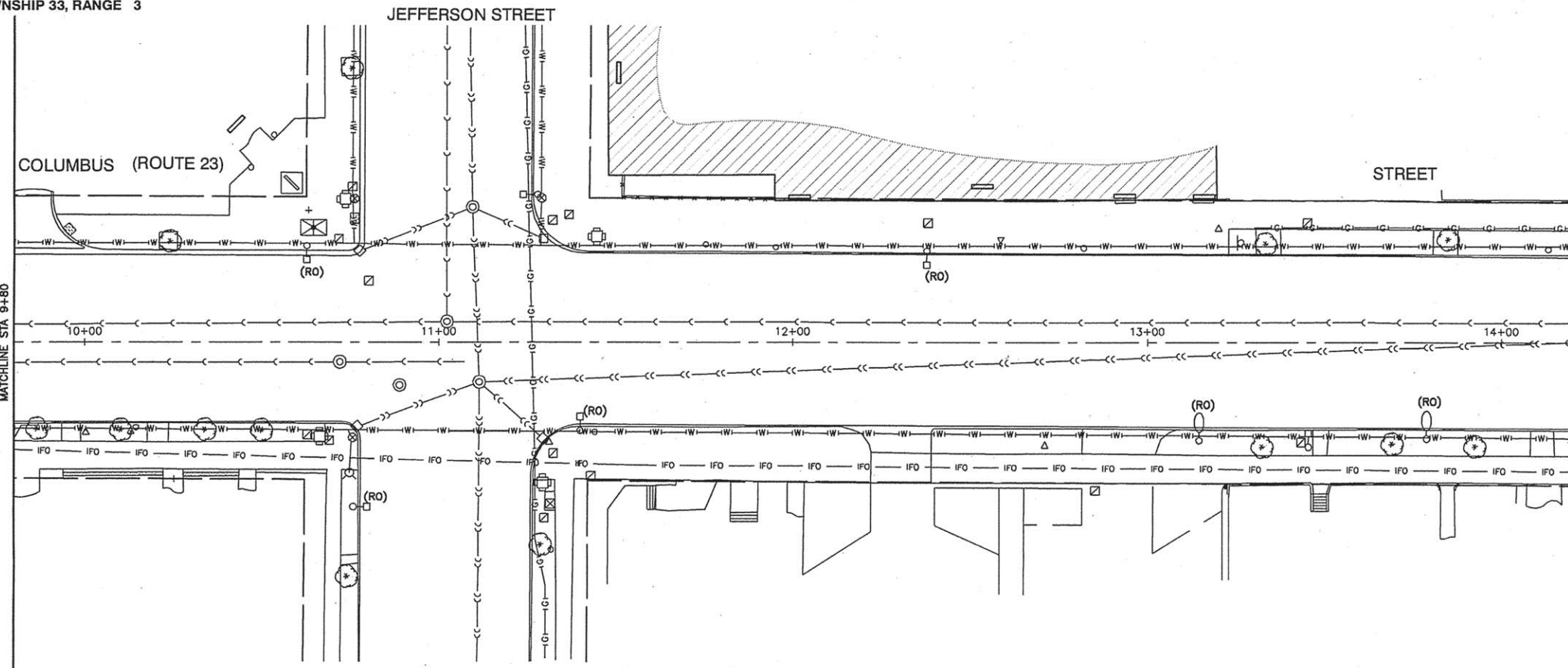
PROPOSED IMPROVEMENTS

- LEGEND:**
- EXISTING STREET LIGHT
 - EXISTING STREET LIGHT
 - PROPOSED LIGHTS, PEDESTRIAN
 - PROPOSED LIGHTING UNIT A, COMPLETE
 - PROPOSED CONTROL CABINET
 - CAPPED RACEWAY FOR FUTURE EXPANSION
 - UNDERGROUND CONDUIT, GALVANIZED STEEL (GSC)
 - UNIT DUCT, 3-1/2", NO.4 AWG AND 1/C NO.6 GROUND, 600V IN 1-1/4" DUCT
 - REMOVAL OF EXISTING STREET LIGHT BY OTHERS
 - BEHIND EXISTING EDGE OF PAVEMENT

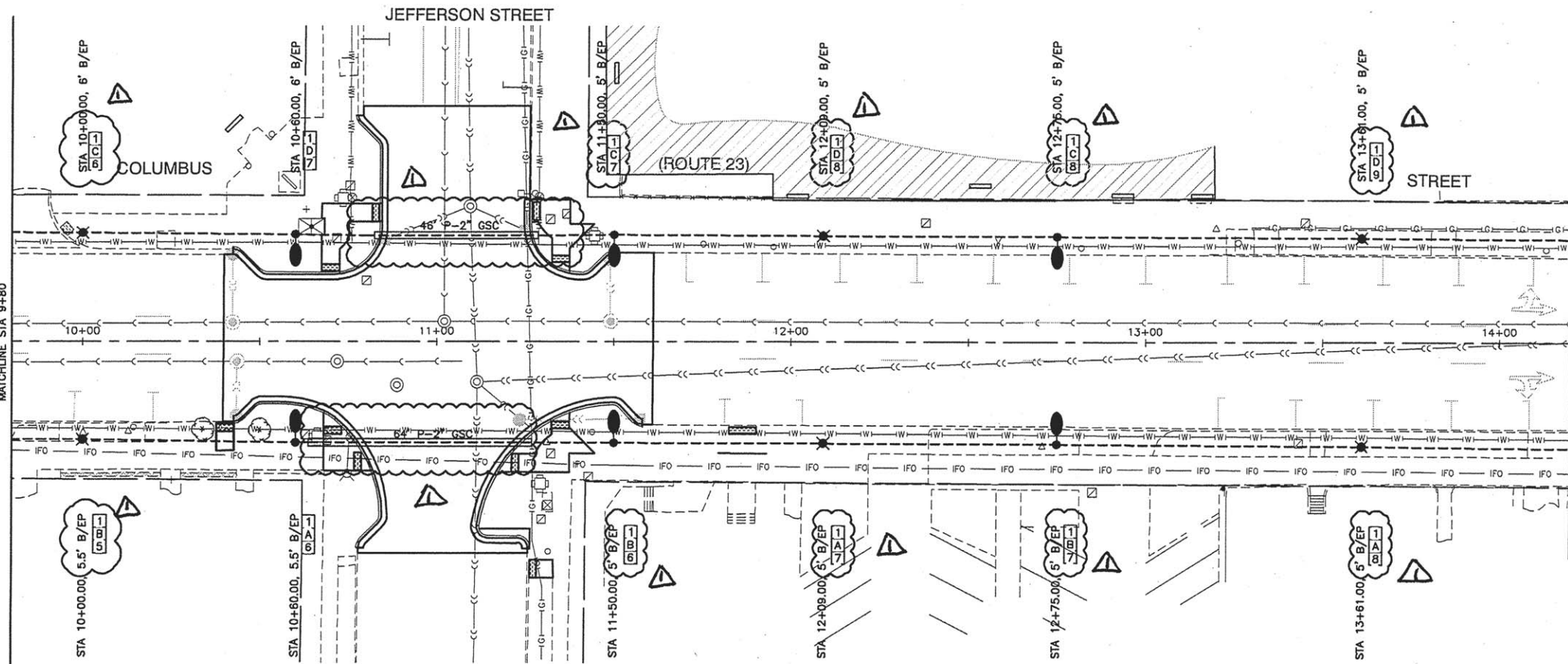
POLE IDENTIFICATION

- CABINET NUMBER
- CIRCUIT
- POLE POSITION

FILE NAME = 13290-LGHT-01 - P02	USER NAME =	DESIGNED - JRA/WPD	REVISED - Δ 6-7-16	STATE OF ILLINOIS DEPARTMENT OF TRANSPORTATION	COLUMBUS STREET LIGHTING & BEAUTIFICATION COLUMBUS STREET AT MAIN STREET STREET LIGHTING	F.A.P. RTE.	SECTION	COUNTY	TOTAL SHEETS	SHEET NO.
	PLOT SCALE =	CHECKED - PKB	REVISED -			68	13-00167-00-LS	LASALLE	30	20
	PLOT DATE = 03-23-16	DRAWN - JJB	REVISED -	SCALE: 1"= 20'	SHEET NO. 20 OF 30 SHEETS	STA.	TO STA.	CONTRACT NO. 87635		
		CHECKED - ACAD	REVISED -					FED. ROAD DIST. NO. 3 ILLINOIS FED. AID PROJECT TE-00D3(0967)		



EXISTING CONDITIONS



PROPOSED IMPROVEMENTS

LEGEND:

- EXISTING STREET LIGHT
- EXISTING STREET LIGHT
- PROPOSED LIGHTS, PEDESTRIAN
- PROPOSED LIGHTING UNIT A, COMPLETE
- PROPOSED CONTROL CABINET
- CAPPED RACEWAY FOR FUTURE EXPANSION
- UNDERGROUND CONDUIT, GALVANIZED STEEL (GSC)
- UNIT DUCT, 3-1/C, NO.4 AWG AND 1/C NO.6 GROUND, 600V IN 1-1/4" DUCT
- (RO) REMOVAL OF EXISTING STREET LIGHT BY OTHERS
- B/EP BEHIND EXISTING EDGE OF PAVEMENT

POLE IDENTIFICATION

- CABINET NUMBER
- CIRCUIT
- POLE POSITION

FILE NAME = 13290-LGHT-01 - P03

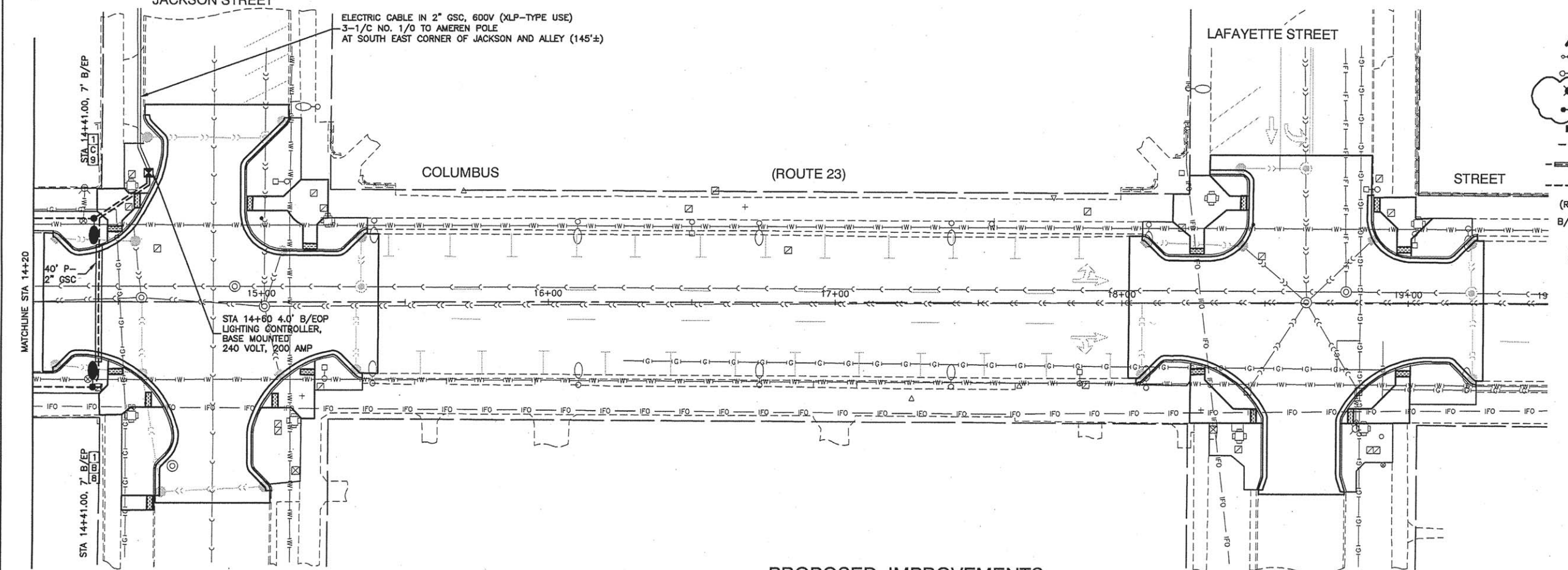
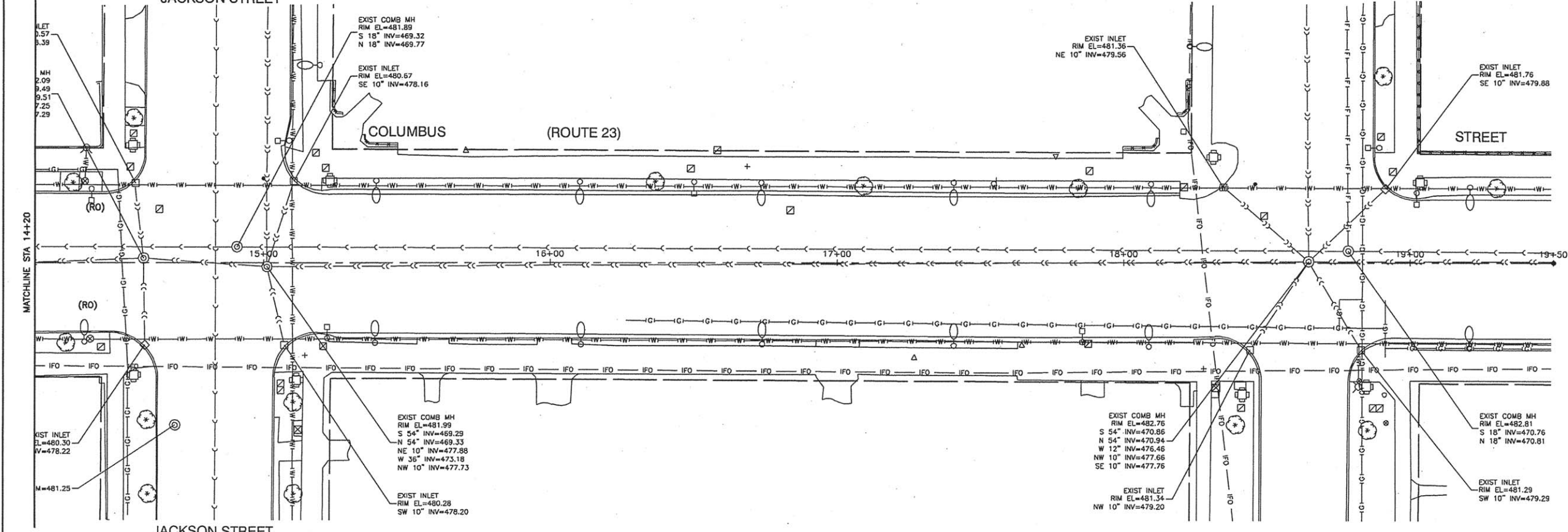
USER NAME =	DESIGNED - JRA/WPD	REVISED - 6-7-16
PLOT SCALE =	CHECKED - PKB	REVISED -
PLOT DATE = 03-23-16	DRAWN - JJB	REVISED -
	CHECKED - ACAD	REVISED -

STATE OF ILLINOIS
DEPARTMENT OF TRANSPORTATION

COLUMBUS STREET LIGHTING & BEAUTIFICATION
COLUMBUS STREET AT MAIN STREET
STREET LIGHTING

SCALE: 1"= 20' SHEET NO. 21 OF 30 SHEETS STA. TO STA.

F.A.P. RTE.	SECTION	COUNTY	TOTAL SHEETS	SHEET NO.
68	13-00167-00-LS	LASALLE	30	21
CONTRACT NO. 87635				
FED. ROAD DIST. NO. 3 ILLINOIS FED. AID PROJECT TE-00D3(096)				



- LEGEND:**
- EXISTING STREET LIGHT
 - EXISTING STREET LIGHT
 - PROPOSED LIGHTS, PEDESTRIAN
 - PROPOSED LIGHTING UNIT A, COMPLETE
 - PROPOSED CONTROL CABINET
 - CAPPED RACEWAY FOR FUTURE EXPANSION
 - UNDERGROUND CONDUIT, GALVANIZED STEEL (GSC)
 - UNIT DUCT, 3-1/2, NO.4 AWG AND 1/2 NO.6 GROUND, 600V IN 1-1/4\"/>
- POLE IDENTIFICATION**
- CABINET NUMBER
 - CIRCUIT
 - POLE POSITION

PROPOSED IMPROVEMENTS

STATE OF ILLINOIS
DEPARTMENT OF TRANSPORTATION

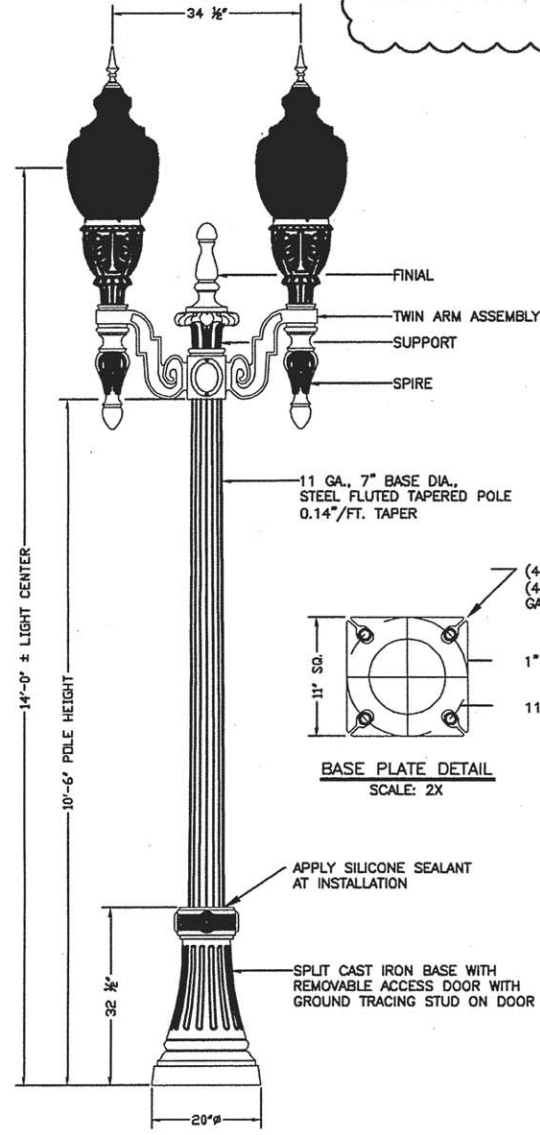
COLUMBUS STREET LIGHTING & BEAUTIFICATION
COLUMBUS STREET AT MAIN STREET
STREET LIGHTING

FILE NAME = 13290-LIGHT-01 - P04	USER NAME =	DESIGNED - JRA/WPD	REVISED - 6-7-16
	PLOT SCALE =	CHECKED - PKB	REVISED -
	PLOT DATE = 03-23-16	DRAWN - JJB	REVISED -
		CHECKED - ACAD	REVISED -

F.A.P. RTE. = 68	SECTION = 13-00167-00-LS	COUNTY = LASALLE	TOTAL SHEETS = 30	SHEET NO. = 22
SCALE: 1" = 20'		SHEET NO. 22 OF 30 SHEETS		STA. TO STA.
FED. ROAD DIST. NO. 3		ILLINOIS		FED. AID PROJECT TE-00D3096

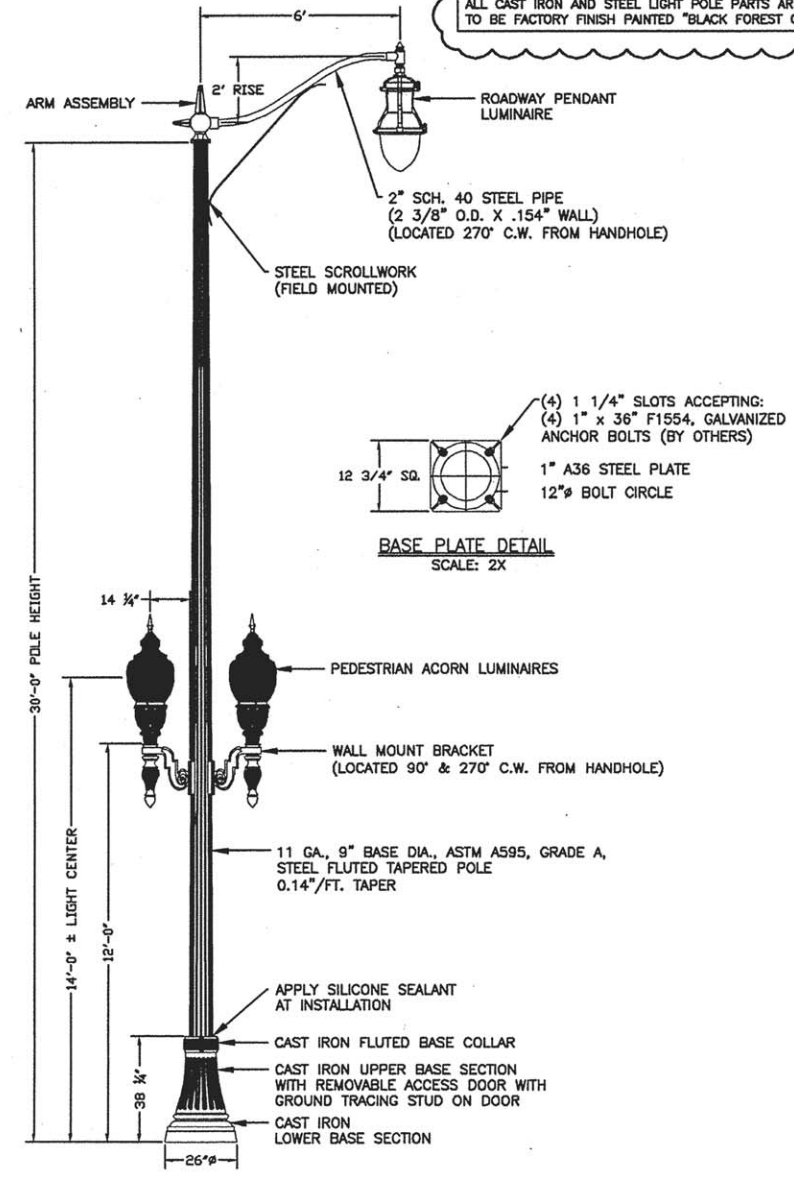
CONTRACT NO. 87635

PAINT SPECIFICATION
 ALL CAST IRON AND STEEL LIGHT POLE PARTS ARE TO BE FACTORY FINISH PAINTED "BLACK FOREST GREEN"

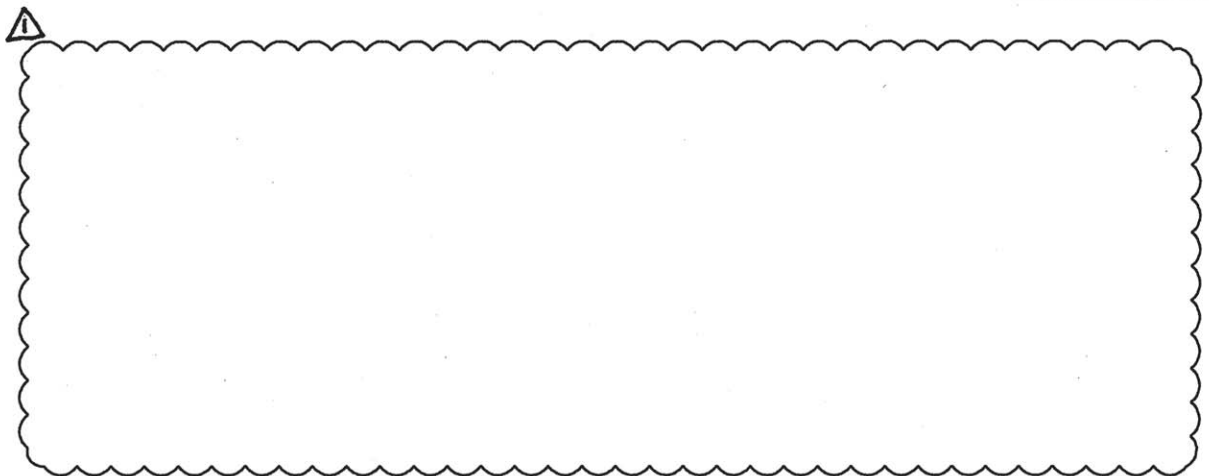


LIGHTS, PEDESTRIAN

PAINT SPECIFICATION
 ALL CAST IRON AND STEEL LIGHT POLE PARTS ARE TO BE FACTORY FINISH PAINTED "BLACK FOREST GREEN"

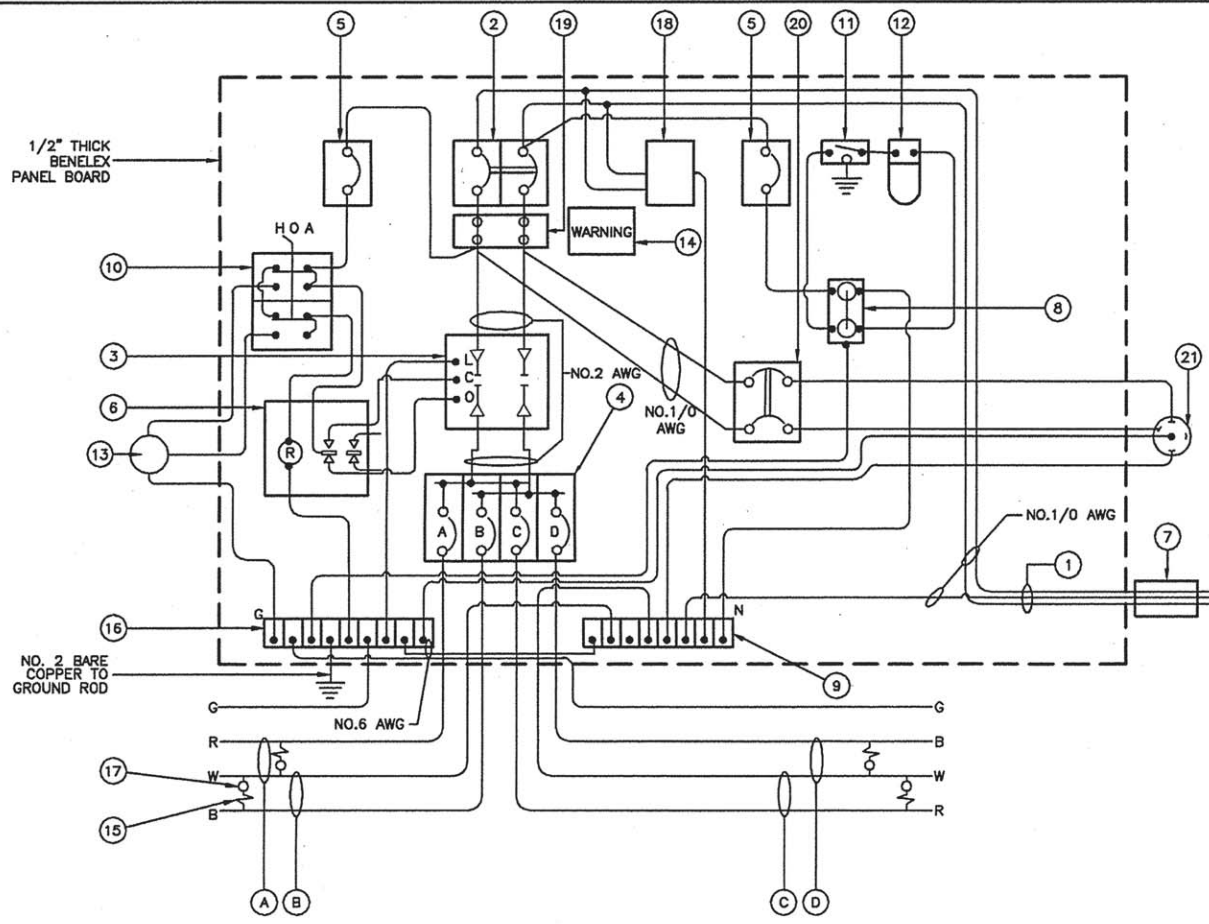


LIGHTING UNIT A, COMPLETE



- NOTES:**
1. THE LIGHTING UNITS SHALL MEET AASHTO DESIGN CRITERIA. DESIGN FOR 90 M.P.H. WIND WITH 30% GUST AND 75 POUND LUMINAIRE HAVING AN E.P.A. OF 1.6 SQ. FT. AND PROPER ICE LOADING.
 2. LIGHT POLE AND ASSOCIATED EQUIPMENT TO BE U.L. LISTED
 3. LUMINAIRE, POLE, BASE COVER, AND ALL ACCESSORIES SHALL BE BLACK FOREST GREEN.
 4. ALL HARDWARE SHALL BE STAINLESS STEEL AND INSTALLED WITH ANTI-SIEZE LUBRICANT.
 5. POLES SHALL BE GALVANIZED PRIOR TO PAINTING.

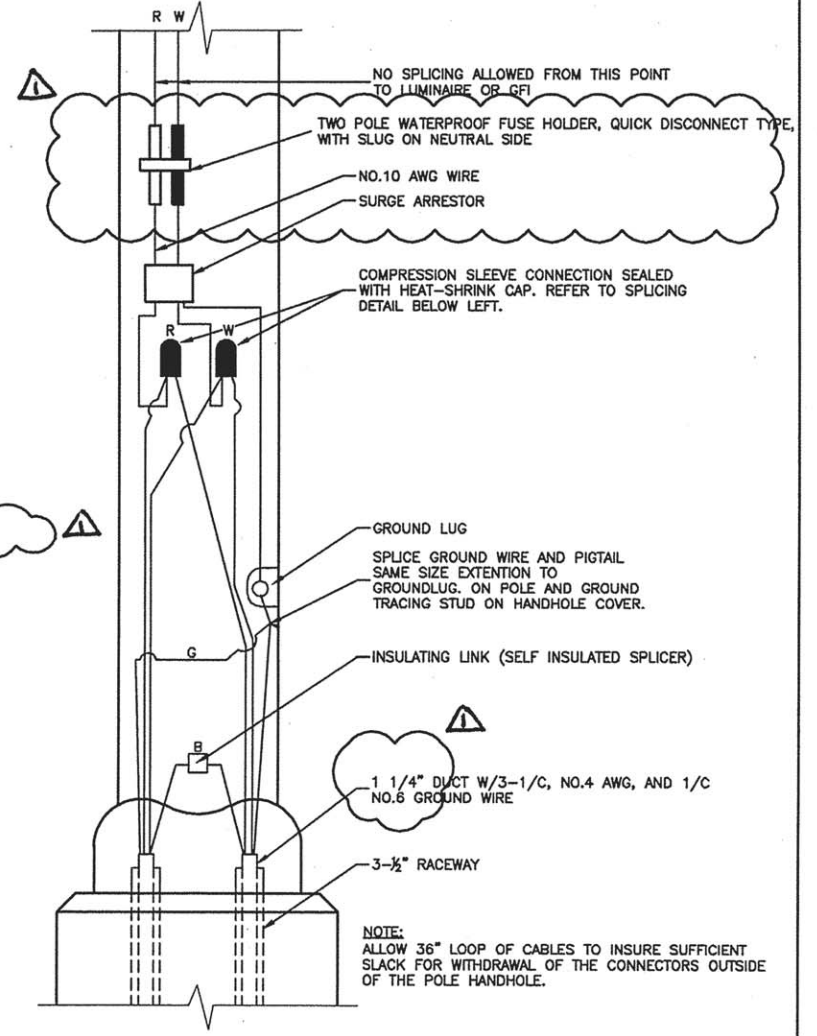
FILE NAME = 13290-LIGHT-02 - P02	USER NAME =	DESIGNED -- JRA/WPD	REVISED -- AG-7-16	STATE OF ILLINOIS DEPARTMENT OF TRANSPORTATION	COLUMBUS STREET LIGHTING & BEAUTIFICATION COLUMBUS STREET AT MAIN STREET STREET LIGHTING DETAILS	F.A.P. RTE.	SECTION	COUNTY	TOTAL SHEETS	SHEET NO.	
	PLOT SCALE =	CHECKED -- PKB	REVISED --			68	13-00167-00-LS	LASALLE	30	24	
	PLOT DATE = 03-23-16	DRAWN -- PS	REVISED --			CONTRACT NO. 87635					
		CHECKED -- AG	REVISED --			FED. ROAD DIST. NO. 3 ILLINOIS FED. AID PROJECT TE-00D3 096					



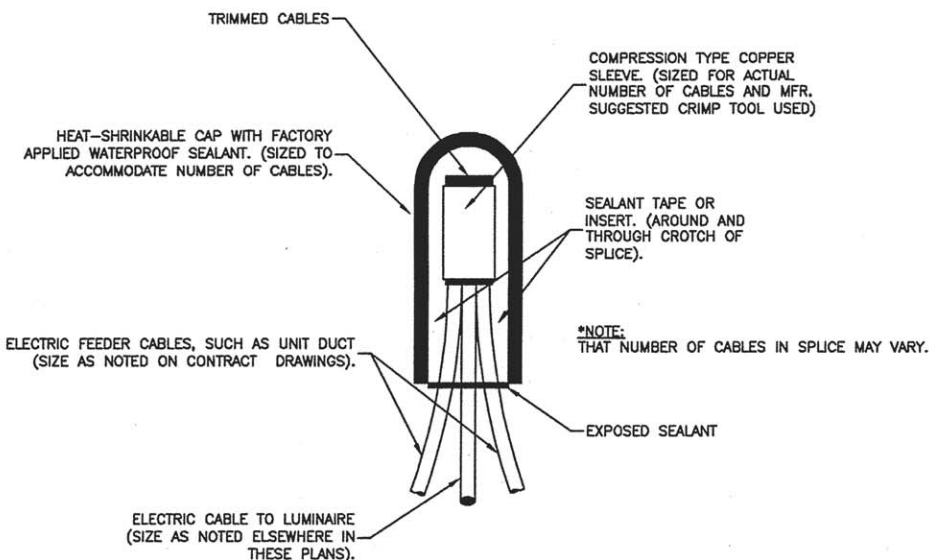
CONTROLLER WIRING DIAGRAM

CONTROLLER WIRING DIAGRAM LEGEND

- ① 3-1/2", NO. 1/0, 600V SERVICE WIRE IN 2" DIA. GALVANIZED STEEL CONDUIT FOR 120/240 VOLT, 1Ø, 3 WIRE, 60HZ. SERVICE.
- ② (1) 200 AMP MAIN CIRCUIT BREAKER, 2 POLE, 800 VOLT, 100 AMP BASE, NON-INTERCHANGEABLE TRIP INTERRUPTING RATING, NEMA - 14000 AMP AT 240 V.
- ③ (1) 100 AMP REMOTE CONTROL CONTACTOR SWITCH, ELECTRICALLY OPERATED, MECHANICALLY HELD, 2 POLE, 600 VOLT
- ④ (4) 30 AMP CIRCUIT BREAKER, 1 POLE, 120 VOLT, 100 AMP BASE, NON-INTERCHANGEABLE TRIP RATING NEMA - 14000 AMP AT 240 VOLTS.
- ⑤ (2) 20 AMP CONTROL CIRCUIT-CIRCUIT BREAKER, 1 POLE, 120 VOLT, 100 AMP BASE, NON-INTERCHANGEABLE TRIP INTERRUPTING RATING NEMA 14000 AMP AT 240 V.
- ⑥ (1) 20 AMP, 1 POLE DOUBLE THROW, 120 VOLT RELAY
- ⑦ METER SOCKET, 1Ø, 3 WIRE, 200A
- ⑧ (1) 20 AMP, 120 VOLT DUPLEX GFCI RECEPTACLE MOUNTED IN BOX.
- ⑨ NEUTRAL BUS BAR, 1/4"x1"x12" MINIMUM LENGTH MOUNTED ON PANEL WITH LUGS.
- ⑩ 3 POSITION SELECTOR SWITCH, 120V.
- ⑪ SWITCH FOR LIGHTING FIXTURE MOUNTED IN BOX, 20 AMP.
- ⑫ WEATHER-PROOF LIGHTING FIXTURE WITH 1600 LUMEN, 120 V LED LAMP.
- ⑬ PHOTOCCELL MOUNTED TO CABINET, 120 V, 1000 VA BALLAST RATING, 1-4 FC ON 3-12 FC OFF, 30 SECOND MINIMUM DELAY.
- ⑭ WARNING PLATE TO READ: WARNING, MAINTENANCE CIRCUIT IS LIVE WHEN MAIN BREAKER IS SWITCHED OFF
- ⑮ IN-LINE FUSEHOLDER WITH FUSE AS NOTED IN FUSE TABLE
- ⑯ GROUND BUS BAR 1/4"x1"x12" MINIMUM LENGTH MOUNTED ON PANEL WITH LUGS
- ⑰ LUMINAIRE
- ⑱ SURGE ARRESTER, UL LISTED, NEC 280 COMPLIANT 1Ø, 3 WIRE 60 HZ. MAX. 3,405 JOULES
- ⑲ SPLICE BLOCK
- ⑳ (1) 100 AMP CIRCUIT BREAKER, 2 POLE, 600 VOLT, 100 AMP BASE, NON-INTERCHANGEABLE TRIP RATING NEMA - 14000 AMP AT 240 VOLTS.
- ㉑ (1) 100 AMP, 4 POLE, 5 WIRE PIN AND SLEEVE RECEPTACLE WITH WEATHER-PROOF COVER MOUNTED TO CABINET WALL FOR EXTERNAL ACCESS. (COOPER CD5100RW EQUIVALENT)
- A CIRCUIT (RED)
- B CIRCUIT (BLACK)
- C CIRCUIT (RED)
- D CIRCUIT (BLACK)



POLE HANDHOLE WIRING DIAGRAM
(TYPICAL FOR SINGLE LUMINAIRE INSTALLATION)
(RED PHASE SHOWN)



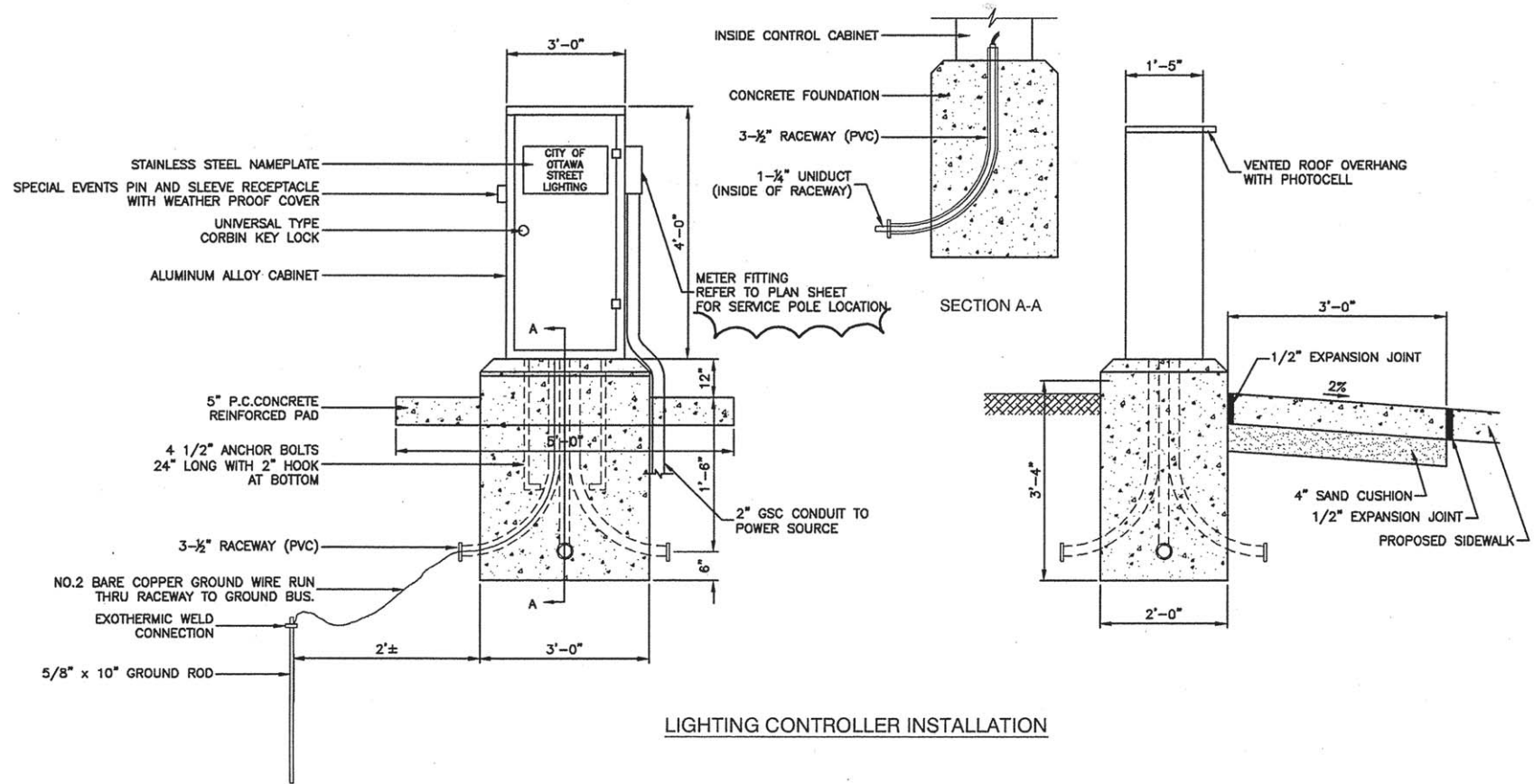
SPLICING ELECTRIC CABLES
BASIC MATERIALS AND METHODS

GENERAL NOTES FOR CONTROL CABINET

1. ENTIRE CONTROL CABINET SHALL BE GROUNDED.
2. ALL WIRING SHALL BE TAGGED WITH SELF-STICKING WIRE MARKERS.
3. GROUND BUS TO BE COLOR CODED GREEN, NEUTRAL BUS WHITE, AND BONDED TO CABINET ENCLOSURE, BY LISTED PRESSURE CONNECTORS OR LISTED CLAMPS.
4. ALL INTERNAL CONTROLLER WIRING TO BE NO.12 AWG UNLESS OTHERWISE SPECIFIED.
5. CABINET WIRING INSULATION TO BE TYPE XHHW OR APPROVED EQUAL.
6. THE CONTROLLER SHALL BE UL LISTED, NEMA 3R AND SUITABLE FOR USE AS SERVICE ENTRANCE

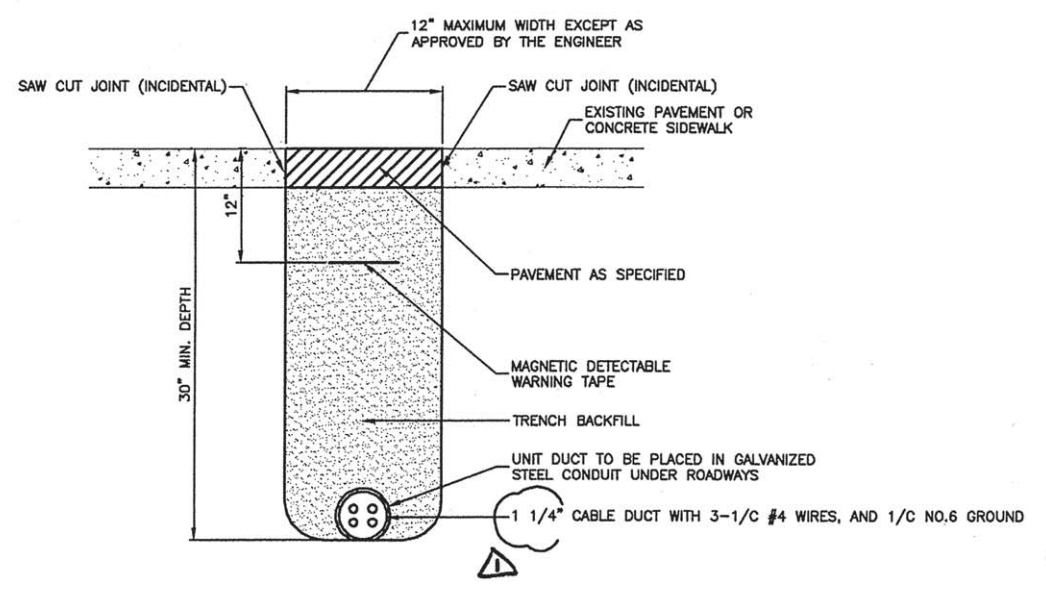
LIGHTING GENERAL NOTES

1. ALL WORK TO CONFORM TO THE MOST RECENT NATIONAL ELECTRICAL CODE AND ANY APPLICABLE LOCAL CODES.
2. CONTRACTOR TO VERIFY LOCATION OF ALL UNDERGROUND UTILITIES BEFORE TRENCHING OR AUGERING.
3. BEFORE INSTALLING STANDARDS NEAR OVERHEAD FACILITIES CALL AMEREN FOR APPROVAL OF LOCATION.
4. THE CONTRACTOR WILL BE RESPONSIBLE FOR THE ESTABLISHMENT OF FINISHED GRADE. THE RESIDENT ENGINEER MAY ASSIST THE CONTRACTOR, AS APPLICABLE, BUT THE RESPONSIBILITY COORDINATING THE FINISHED GRADE ELEVATION WITH THE TOP OF THE FOUNDATION HEIGHTS AND THE LIGHT SHALL REMAIN WITH THE CONTRACTOR.
5. NO POLES SHALL BE ERECTED UNTIL THE RESPECTIVE FOUNDATIONS HAVE CURED, AS APPROVED BY THE ENGINEER.
6. THE CONTRACTOR SHALL MAKE SPECIAL NOTE OF THE REQUIREMENTS FOR WIRE MARKERS AND SHALL TAG ALL WIRE MARKERS AND SHALL TAG ALL WIRE ACCORDINGLY.
7. EQUIPMENT GROUND CONDUCTORS SHALL BE SPLICED AND BONDED AT EACH LIGHT POLE OR OTHER PIECE OF EQUIPMENT.
8. CONDUITS AND UNIT DUCTS MUST BE POSITIONED IN THE FIELD TO AVOID CONFLICT WITH TREES, BUSHES, DRAINS AND OTHER UTILITIES.

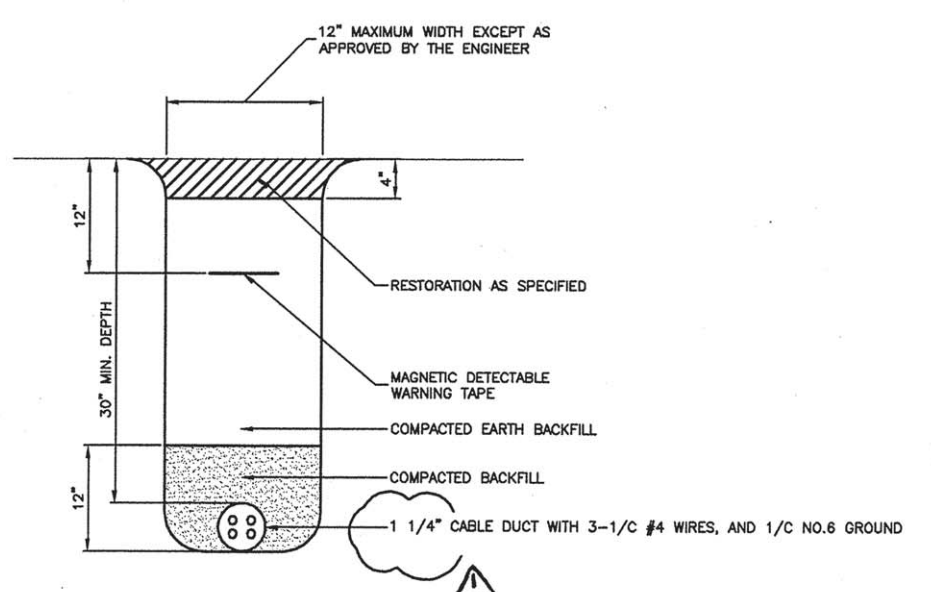


LIGHTING CONTROLLER INSTALLATION

- NOTE:
1. ORIENT CABINET SO DOOR OPENS AWAY FROM TRAFFIC.
 2. METER FITTING TO BE LOCATED ON THE SIDE OF THE CABINET CLOSEST TO SERVICE POLE.



TRENCH DETAIL - PAVED AREAS



TRENCH DETAIL - UNPAVED AREAS

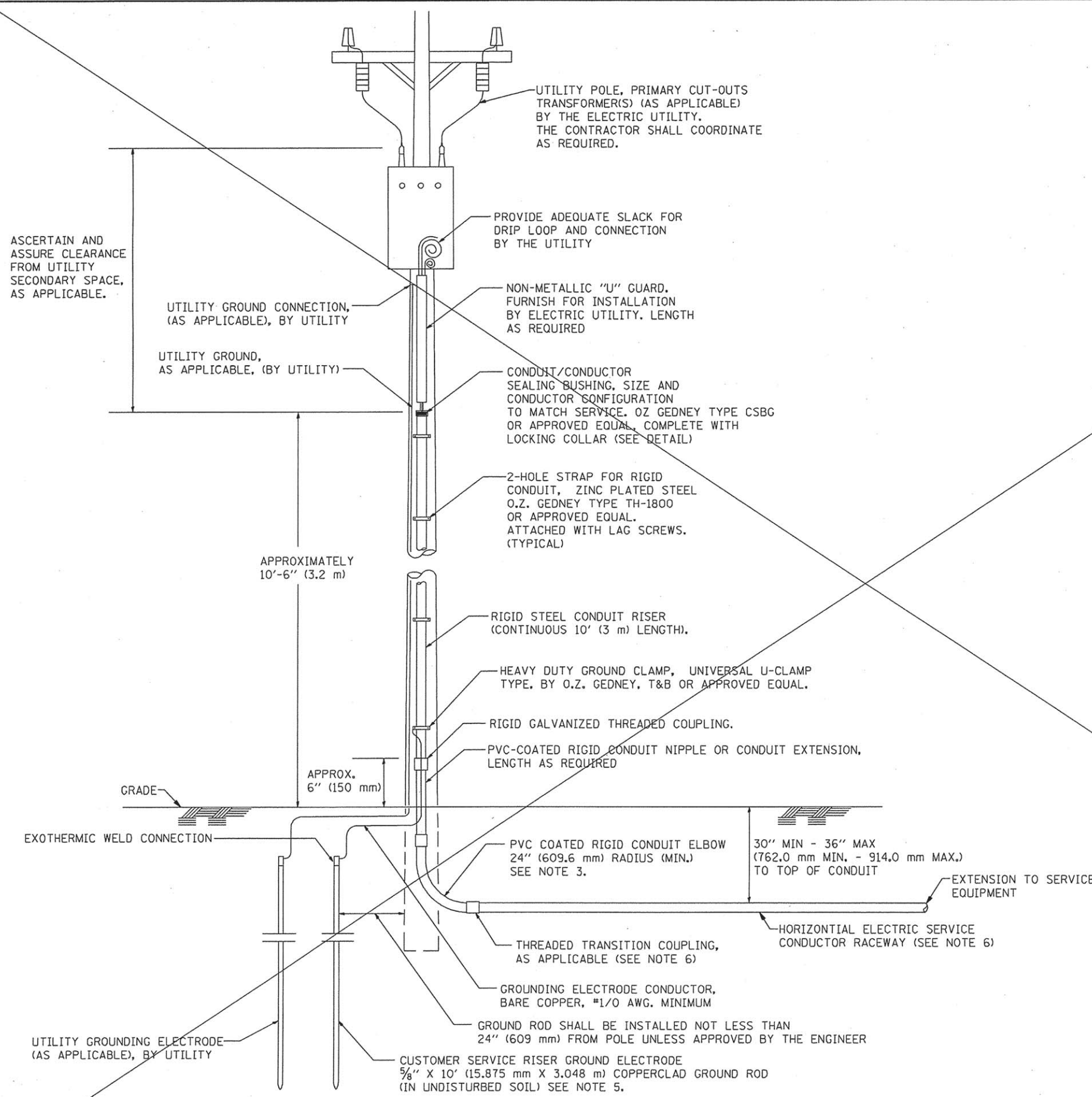
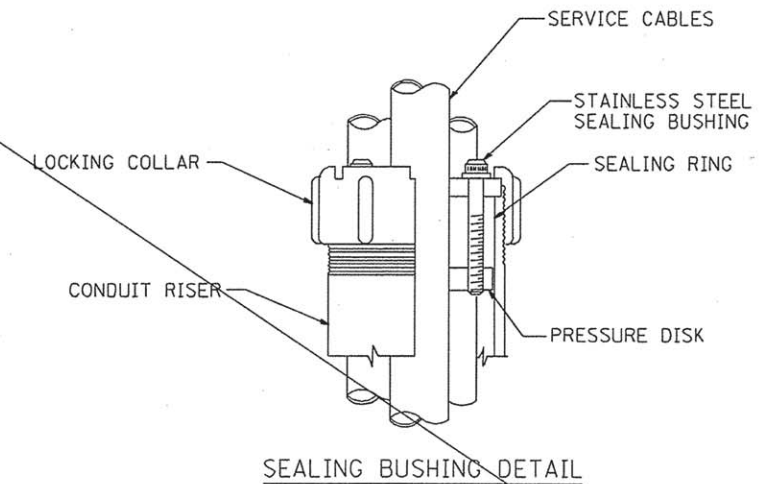
FILE NAME = 13290-LGHT-02 - P04	USER NAME =	DESIGNED - JRA/WPD	REVISED - Δ 6-7-16	STATE OF ILLINOIS DEPARTMENT OF TRANSPORTATION	COLUMBUS STREET LIGHTING & BEAUTIFICATION COLUMBUS STREET AT MAIN STREET STREET LIGHTING DETAILS	F.A.P. RTE.	SECTION	COUNTY	TOTAL SHEETS	SHEET NO.	
	PLOT SCALE =	CHECKED - PKB	REVISED -			68	13-00167-00-LS	LASALLE	30	26	
	PLOT DATE = 03-23-16	DRAWN - PS	REVISED -			CONTRACT NO. 87635					
		CHECKED - AG	REVISED -			FED. ROAD DIST. NO. 3 ILLINOIS FED. AID PROJECT TE-00D3(96)					
SCALE:						SHEET NO. 26 OF 30 SHEETS		STA. TO STA.			

APPLICATION

THIS DETAIL APPLIES FOR LOW VOLTAGE ELECTRIC SERVICE (660 V OR LESS) FROM AN OVERHEAD UTILITY SUPPLY TO SEPERATLY-MOUNTED SERVICE EQUIPMENT.

NOTES

- SERVICE VOLTAGE SHALL BE AS INDICATED ELSEWHERE IN THE DRAWINGS.
- UNLESS OTHERWISE INDICATED, ITEMS AND WORK SHALL BE INCLUDED AND PAID AS PART OF THE ELECTRIC UTILITY SERVICE INSTALLATION PAY ITEM.
- CONDUIT AND CONNECTOR DIAMETER SHALL MATCH THE DIAMETER OF THE SERVICE CONDUCTOR RACEWAY AS INDICATED ON THE PLANS.
- PVC COATED RACEWAYS AND ACCESSORIES SHALL BE CAREFULLY INSTALLED WITH MFR RECOMMENDED TOOLS AND PROCEDURES TO AVOID DAMAGE. ANY DAMAGE SHALL BE REPAIRED WITH COMPATIBLE PVC TOUCH-UP MATERIAL TO THE SATISFACTION OF THE ENGINEER OR THE DAMAGED MATERIAL SHALL BE REPLACED AT NO ADDITIONAL COST.
- THE CONTRACTOR SHALL OBTAIN INSPECTION AND APPROVAL BY THE ENGINEER OF SERVICE RISER GROUND ELECTRODE, RISER ELBOW, NIPPLE AND CONNECTION TO SERVICE CONDUCTOR RACEWAY EXTENSION BEFORE BACKFILL AND SHALL ALSO OBTAIN INSPECTION OF SERVICE RISER AND SEALING BUSHING BEFORE UTILITY "U" GUARD INSTALLATION AND SERVICE CONNECTION.
- THE HORIZONTAL ELECTRIC SERVICE CONDUCTOR RACEWAY SHALL BE AS INDICATED AND SHALL BE MEASURED SEPARATELY FOR PAYMENT. WHEN THE RACEWAY IS PVC-COATED RIGID GALVANIZED STEEL, THE COUPLING SHALL BE THE SAME. WHEN THE RACEWAY IS PVC CONDUIT (IN CONCRETE), THE COUPLING SHALL BE A METALIC TO NON METALIC ADAPTER. WHEN THE RACEWAY IS ENCASED IN CONCRETE, THE CONCRETE SHALL EXTEND TO COVER THE COUPLING.
- PLANS AND DETAILS INDICATE THE GENERAL NATURE AND REQUIREMENTS. THEY DO NOT SHOW EVERY ACCESSORY AND ATTACHMENT, AND THEY DO NOT RELIEVE THE CONTRACTOR OF THE REQUIREMENTS OF THE SPECIFICATIONS AND SPECIAL PROVISIONS TO ASCERTAIN UTILITY REQUIREMENTS AND TO COORDINATE ACCORDINGLY. FURNISHING ALL ITEMS AND WORK NOT PROVIDED BY THE UTILITY, BUT NECESSARY FOR A COMPLETE SERVICE INSTALLATION IS REQUIRED AND SHALL BE INCLUDED IN THE ELECTRIC UTILITY SERVICE INSTALLATION PAY ITEM.



FILE NAME = 13290-LGHT-04 - P01	USER NAME = geglennob	DESIGNED --	REVISED -- 03-03-06
		CHECKED --	REVISED -- Δ 6-7-16
	PLOT SCALE = 58.0000 ' / IN.	DRAWN -- MEA	REVISED --
	PLOT DATE = 1/4/2008	CHECKED --	REVISED --

STATE OF ILLINOIS
DEPARTMENT OF TRANSPORTATION

**ELECTRIC SERVICE INSTALLATION
AERIAL REMOTE DISCONNECT**

SCALE: NONE SHEET NO. 1 OF 1 SHEETS STA. TO STA.

F.A.P. RTE.	SECTION	COUNTY	TOTAL SHEETS	SHEET NO.
68	13-00167-00-LS	LASALLE	63	28
BE-220			CONTRACT NO. 87635	
FED. ROAD DIST. NO. 3 ILLINOIS FED. AID PROJECT TE-00D3096				

