

F.A.P. RTE.	SECTION	COUNTY	TOTAL SHEETS	SHEET NO.
90/94	1999-161-1	COOK	75	11
STA.		TO STA.		
FED. ROAD DIST. NO.		ILLINOIS	FED. AID PROJECT	
D-91-411-99				

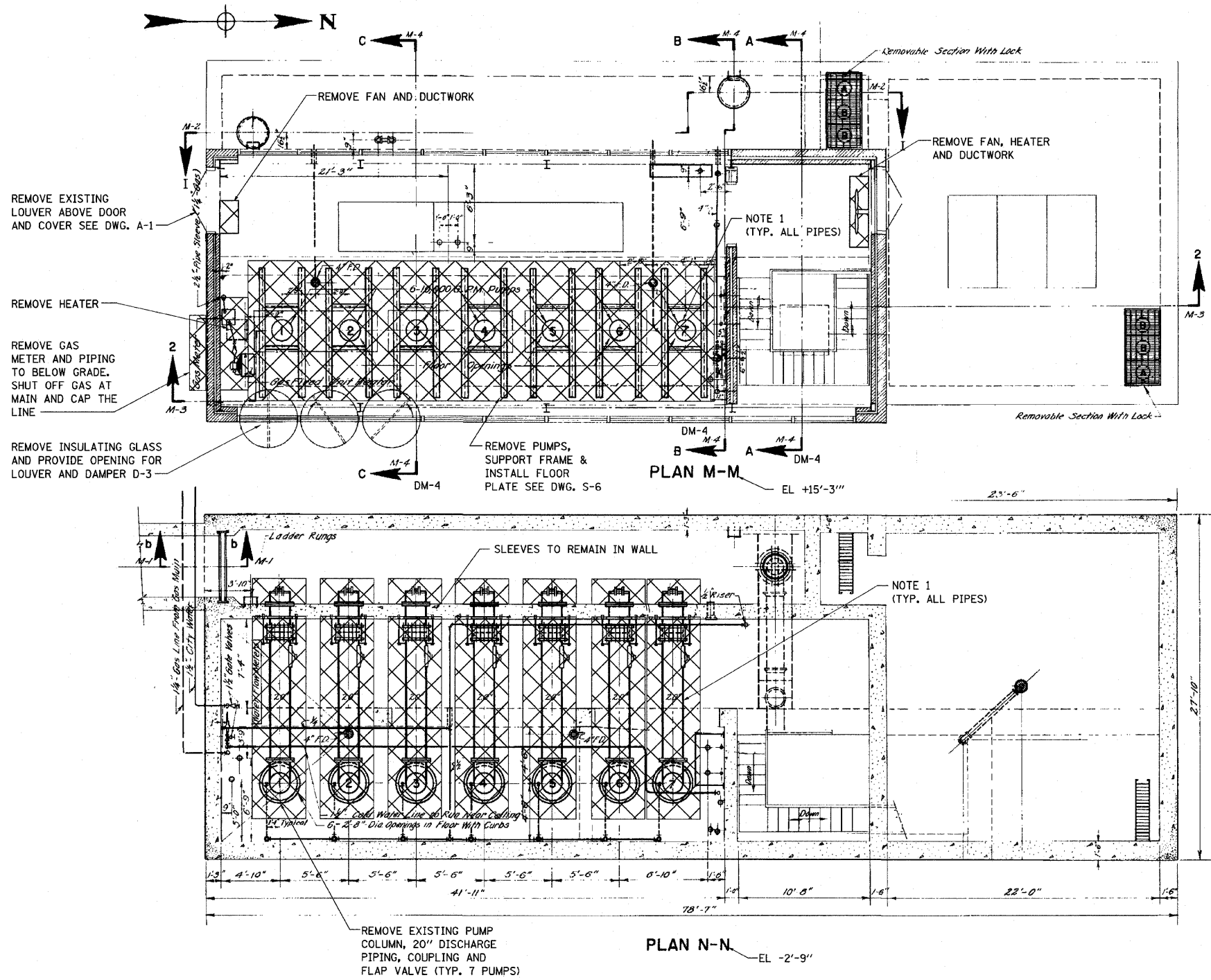
**GENERAL DEMOLITION NOTES:**

- COORDINATE DEMOLITION WITH THE PROPOSED CONSTRUCTION, MAINTENANCE OF THE FACILITY, AND APPROVED EQUIPMENT SHOP DRAWINGS. ALL OPENINGS ARE FOR ESTIMATE PURPOSE & SHALL BE COORDINATED WITH REVIEWED SHOP DRAWINGS.
- THE DEMOLITION OF THE STRUCTURAL SLAB AND BEAMS AT EL. -2'-9" SHALL BE SHORED PRIOR TO DEMOLITION. CONTRACTOR SHALL COORDINATE STRUCTURAL DEMOLITION WITH EQUIPMENT DEMOLITION TO MAINTAIN PUMP STATION IN OPERATION.
- DEMOLITION SHALL INCLUDE ALL ITEMS AND APPURTENANCES TO BE REMOVED AS REQUIRED TO COMPLETE THE WORK, WHETHER SPECIFICALLY IDENTIFIED OR NOT, SUCH THAT THE FACILITY IS COMPLETE AND OPERATIONAL.
- THE REMOVAL OF ELECTRICAL/MECHANICAL ITEMS INCLUDES THE REMOVAL OF ALL ASSOCIATED SUPPORTS, WIRING, BOXES AND CONDUIT.
- USE CHIPPING MATERIAL AND ROCK SPLITTERS TO AVOID DAMAGING EXISTING REINFORCEMENT DURING CONCRETE DEMOLITION.
- CUT OR BEND EXISTING REINFORCEMENT TO CLEAR NEW OPENINGS, PIPE SLEEVES, WALL PIPES AND DRAINS.
- LAP EXISTING REINFORCEMENT WITH NEW REINFORCEMENT.
- PATCH, REPAIR OR RESTORE ALL AREAS AFFECTED BY DEMOLITION AND EQUIPMENT REMOVAL TO MATCH ADJACENT SURFACES. PROVIDE UNIFORM APPEARANCE AND FILL UNNECESSARY OPENINGS.
- MAIN PUMPS, MOTORS, COLUMNS AND SHAFTS SHALL BE SALVAGED AND DELIVERED TO A LOCATION WITHIN DISTRICT 1 AS PER ENGINEER.
- FOR ADDITIONAL (E) SLABS/WALLS REMOVAL DUE TO NEW OPENING REQUIREMENT, (E) LADDERS/RAILINGS REPLACEMENT SEE DRAWINGS S-5, S-6, S-11 AND S-12.

**NOTES:**

- LEAD BASED PAINTS WERE USED ON THE PIPES. DEMOLITION CONTRACTOR SHALL HAVE THE LEAD PAINT ABATED AND PROPERLY DISPOSED PER THE REQUIREMENTS OF DIVISION 9, SECTION 9B OF THE SPECIFICATIONS AND REQUIREMENTS OF ALL RULES GOVERNING REMOVAL OF LEAD BASED PAINTS FROM THE U.S. ENVIRONMENTAL PROTECTION AGENCY (USEPA) CONTAINED IN THE FEDERAL REGISTER 10 CFR PART 745.

**LEGEND**



PLOT DATE = 3/22/2010  
 FILE NAME = D:\98828-ent-DM-01.dgn  
 PLOT SCALE = 1/8" = 1'-0"  
 USER NAME = WJEB



REVISIONS	
NAME	DATE

ILLINOIS DEPARTMENT OF TRANSPORTATION  
**MECHANICAL DEMOLITION - SHEET 1**  
 SCALE: VERT. NO SCALE  
 HORIZ. NO SCALE  
 DATE: 3/23/2010  
 DRAWN BY: R.D  
 CHECKED BY: A.M.