

|                       |              |              |              |           |
|-----------------------|--------------|--------------|--------------|-----------|
| F.A.I. RTE.           | SECTION      | COUNTY       | TOTAL SHEETS | SHEET NO. |
| 55                    | (99-1&2)AC-3 | WILL         | 524          | 1         |
| FED. ROAD DIST. NO. 1 | ILLINOIS     | CONTRACT NO. | 60C31        |           |

FOR INDEX OF SHEETS, SEE SHEET NO. 2 (VOLUME I)  
FOR INDEX OF SHEETS, SEE SHEET NO. 301 (VOLUME II)

**STATION EQUATIONS:**

STA 5025+24.74 BK  $\oslash$  WEST FRONTAGE ROAD =  
STA 4000+00.00, 12.00' LT AH  $\oslash$  RAMP D =  
STA 6000+00.00 AH  $\oslash$  WEST FRONTAGE CONNECTOR

STA 2038+02.19 BK  $\oslash$  RAMP C (PT) =  
STA 100+00.00 AH  $\oslash$  RAMP E (PC) =  
STA 7021+82.16, 36.00' RT BK  $\oslash$  RAMP A

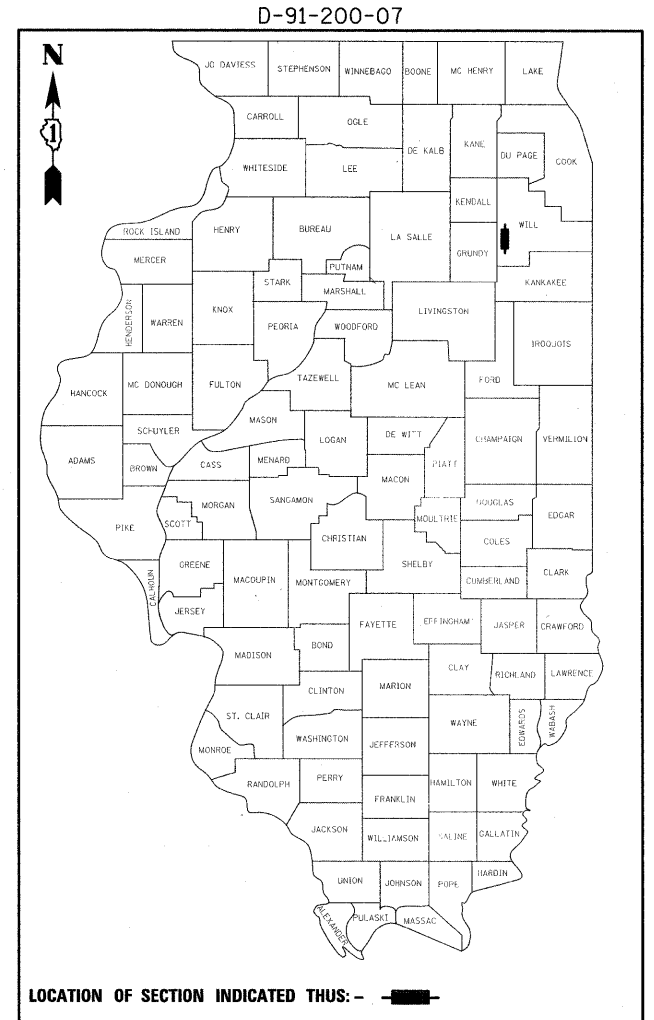
STA 126+08.25, 21.00' LT BK END  $\oslash$  RAMP E =  
STA 3000+00.00, 21.00' LT AH  $\oslash$  RAMP B =  
STA 900+00.00 AH  $\oslash$  ARSENAL ROAD =  
STA 1050+03.08, 146.78' RT  $\oslash$  I-55

**VOLUME I**

STATE OF ILLINOIS  
DEPARTMENT OF TRANSPORTATION  
DIVISION OF HIGHWAYS

**PROPOSED  
HIGHWAY PLANS**

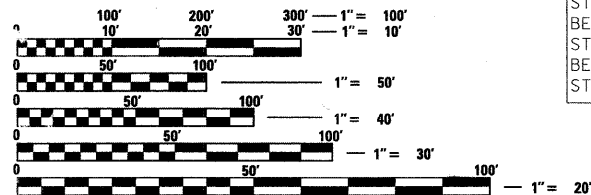
**ROUTE FAI 55 (I-55)  
SECTION (99-1&2)AC-3  
PROJECT: ACIM-055-6(239)243  
I-55 AT ARSENAL ROAD  
INTERCHANGE RAMP AND  
FRONTAGE ROAD CONSTRUCTION  
WILL COUNTY  
C-91-200-07**



**DESIGN DESIGNATION**

|                         |  |
|-------------------------|--|
| I-55 RAMP A             | 5700(10) INTERSTATE - CLASS II TRUCK ROUTE 11.34 (JPCP-20)                                 |
| I-55 RAMP B             | 18500(10) INTERSTATE - CLASS I TRUCK ROUTE 18.20 (JPCP-20)                                 |
| I-55 RAMP C             | 18500(10) INTERSTATE - CLASS I TRUCK ROUTE 18.20 (JPCP-20)                                 |
| I-55 RAMP D             | 5400(10) INTERSTATE - CLASS II TRUCK ROUTE 11.34 (JPCP-20)                                 |
| I-55 RAMP E             | 24200(10) INTERSTATE - CLASS I TRUCK ROUTE 18.20 (JPCP-20)                                 |
| ARSENAL ROAD            | 35900(10) SUBURBAN STRATEGIC REGIONAL ARTERIAL (SRA) - CLASS I TRUCK ROUTE 22.47 (JPCP-20) |
| EAST FRONTAGE ROAD      | 3400(10) COLLECTOR STREET 3.20 (BIT-20)  |
| WEST FRONTAGE CONNECTOR | 4900(10) COLLECTOR STREET 4.63 (JPCP-20)   |
| WEST FRONTAGE ROAD      | 4900(10) COLLECTOR STREET 3.20 (BIT-20)  |

DESIGN SPEED: I-55 = 70 MPH  
ARSENAL ROAD = 50 MPH  
EAST FRONTAGE ROAD = 50 MPH  
WEST FRONTAGE CONNECTOR = 50 MPH  
WEST FRONTAGE ROAD = 50 MPH  
RAMPS A, C, D & E = 50 MPH  
RAMP B = 40 MPH



FULL SIZE PLANS HAVE BEEN PREPARED USING STANDARD ENGINEERING SCALES. REDUCED SIZED PLANS WILL NOT CONFORM TO STANDARD SCALES. IN MAKING MEASUREMENTS ON REDUCED PLANS, THE ABOVE SCALES MAY BE USED.

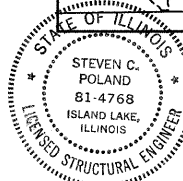
J.U.L.I.E.  
JOINT UTILITY LOCATION INFORMATION FOR EXCAVATION  
1-800-892-0123  
OR 811



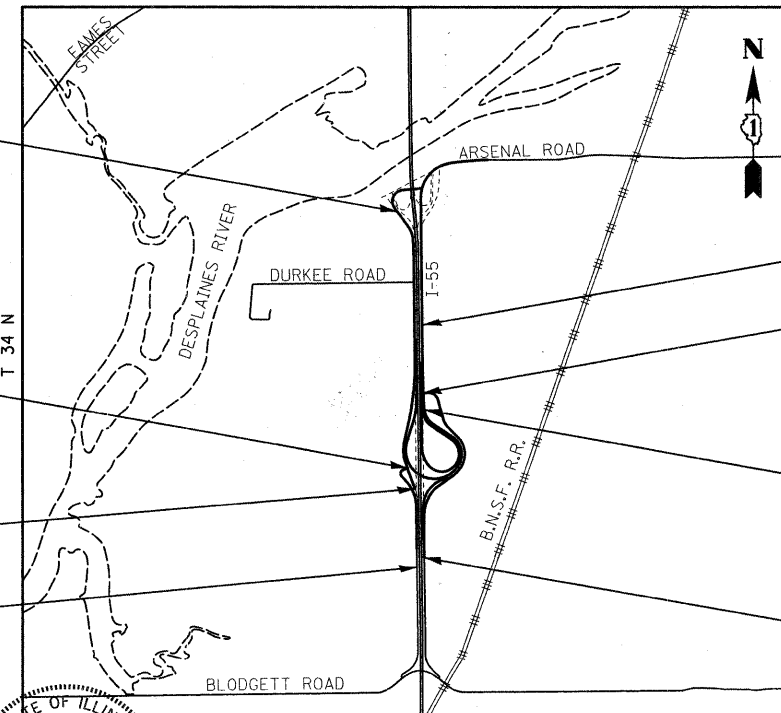
Expires: 11/30/11



Expires: 11/30/11



Expires: 11/30/2010  
SHEETS 323-341



LOCATION MAP  
SCALE = 1:2400

**LENGTH OF PROJECT**

|  |
|--|
| ARSENAL ROAD = 1,975.00 FT = 0.374 MI            |
| WEST FRONTAGE CONNECTOR = 7,754.15 FT = 1.469 MI |
| WEST FRONTAGE ROAD = 3,195.27 FT = 0.605 MI      |
| EAST FRONTAGE ROAD = 6,036.54 FT = 1.143 MI      |
| RAMP D = 920.92 FT = 0.174 MI                    |
| GROSS AND NET LENGTH = 19,881.88 FT = 3.765 MI   |

END IMPROVEMENT  
STA 919+75.00  $\oslash$  ARSENAL ROAD

END IMPROVEMENT  
STA 8058+20.79  $\oslash$  EAST FRONTAGE ROAD =  
STA 904+96.95  $\oslash$  ARSENAL ROAD

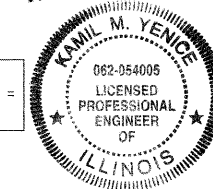
BEGIN IMPROVEMENT  
STA 900+00.00  $\oslash$  ARSENAL ROAD

BEGIN IMPROVEMENT  
STA 7997+84.25  
 $\oslash$  EAST FRONTAGE ROAD

END IMPROVEMENT  
STA 5025+36.74  $\oslash$  WEST FRONTAGE ROAD;  
BEGIN IMPROVEMENT  
STA 4000+00.00  $\oslash$  RAMP D;  
BEGIN IMPROVEMENT  
STA 6000+00.00  $\oslash$  WEST FRONTAGE CONNECTOR

END IMPROVEMENT  
STA 4009+20.92  $\oslash$  RAMP D

BEGIN IMPROVEMENT  
STA 4993+41.47  
 $\oslash$  WEST FRONTAGE ROAD



Signature: Kamil Yence  
DATE: 11/30/2011  
NAME: KAMIL YENCE  
EXP. 11/30/2011  
SHEETS 291-298

STATE OF ILLINOIS  
DEPARTMENT OF TRANSPORTATION  
DIVISION OF HIGHWAYS

SUBMITTED DECEMBER 11, 2009

Diana M. O'Keefe  
DEPUTY DIRECTOR OF HIGHWAYS, REGION ENGINEER

Scott E. Stroh, P.E.  
ENGINEER OF DESIGN AND ENVIRONMENT

Christine M. Reed  
DIRECTOR OF HIGHWAYS, CHIEF ENGINEER

DISTRICT 1 NO. (847) 705-4523  
PROJECT ENGINEER: HELEN PAZON

Signature: Alan R. Swanson  
DATE: 11/30/2011  
NAME: ALAN SWANSON  
EXP. 11/30/2011  
SHEETS 1-86, 125-143, 184-198, 236-290, 299-301, 357-524

Signature: Gerald E. Koylass  
DATE: 11/30/2011  
NAME: GERALD E. KOYLASS  
EXP. 11/30/2011  
SHEETS 302-322

Signature: Steven C. Poland  
DATE: 11/30/2010  
NAME: STEVEN C. POLAND  
EXP. 11/30/2010  
SHEETS 323-341



Signature: Sadhu Singh Rikhiraj  
DATE: 11/30/2011  
NAME: SADHU SINGH RIKHIRAJ  
EXP. 11/30/2011  
SHEETS 144-183



Signature: Richard A. Young  
DATE: 11/30/2011  
NAME: RICHARD A. YOUNG  
EXP. 11/30/2011  
SHEETS 87-124

**PRINTED BY THE AUTHORITY  
OF THE STATE OF ILLINOIS**