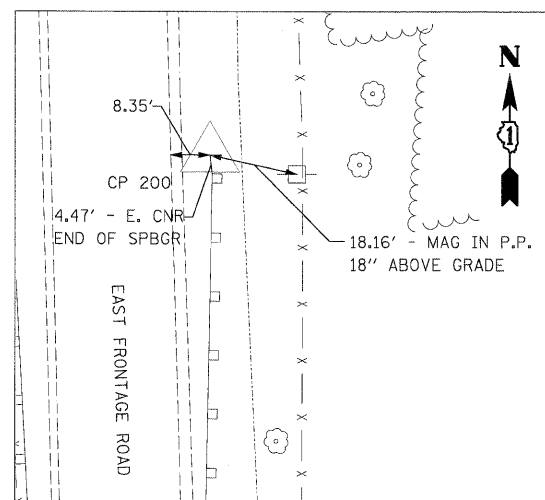
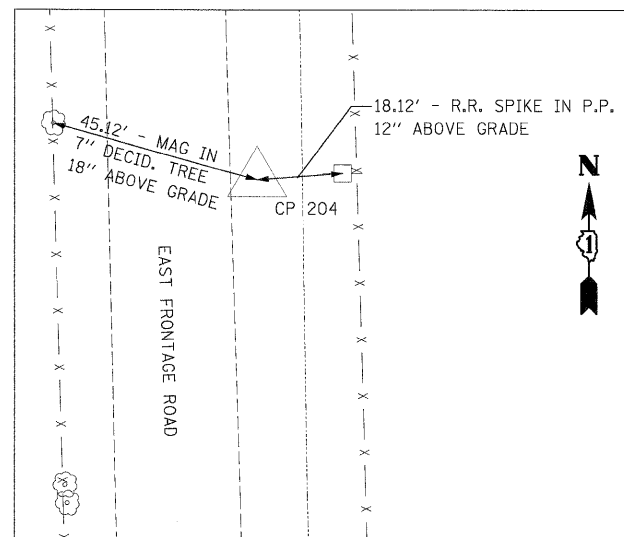


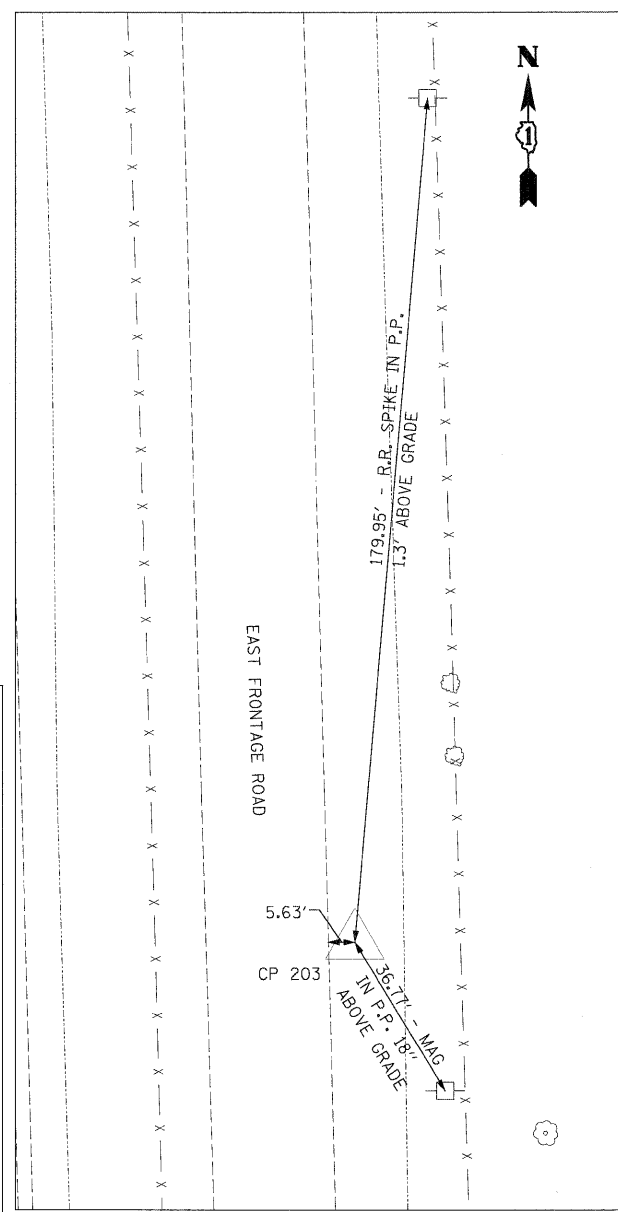
**CP 100**  
 N 1719505.47  
 E 1022731.40  
 STA 1004+95.55  
 OFF 90.23' LT  
 ELEV 519.86



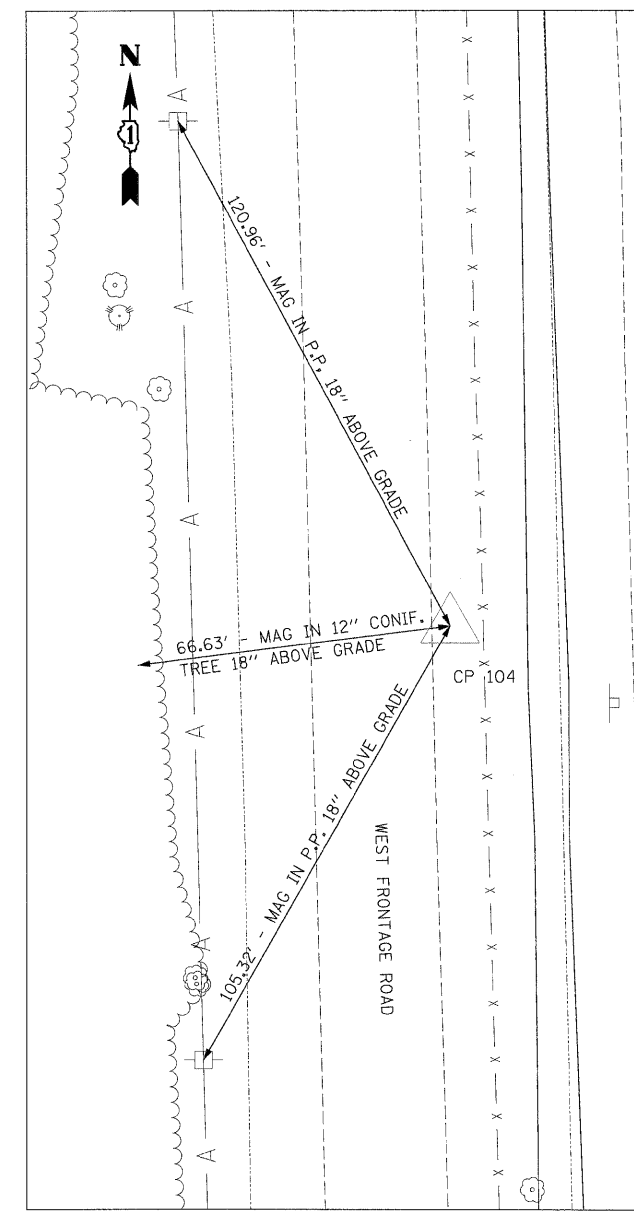
**CP 200**  
 N 1719631.86  
 E 1022949.65  
 STA 1006+15.90  
 OFF 131.42' RT  
 ELEV 518.31



**CP 204**  
 N 1721913.30  
 E 1022884.65  
 STA 1028+98.26  
 OFF 129.12' RT  
 ELEV 531.90



**CP 203**  
 N 1721313.17  
 E 1022900.33  
 STA 1022+97.93  
 OFF 128.30' RT  
 ELEV 530.15



**CP 104**  
 N 1721904.47  
 E 1022663.03  
 STA 1028+95.52  
 OFF 92.66' RT  
 ELEV 530.11

**BENCHMARKS**

|         |  |       |  |       |   |
|---------|--|-------|--|-------|---|
| J247    | NGS MONUMENT G 247, PID MF 0335, BENCH MARK DISK SET IN TOP OF CONCRETE. ELEV=531.030  | BM 7  | RR SPIKE IN E SIDE OF POWER POLE ±6.5' TALL AT THE SOUTH EDGE OF A POND ON THE E SIDE OF E FRONTAGE ROAD BETWEEN CPT'S 214 & 215. ELEV=556.123       | BM 14 | RR SPIKE IN 1ST POWER POLE NORTH OF CPT 106, W SIDE OF W FRONTAGE ROAD. ELEV=531.466  |
| BM 2962 | DISK IN CONCRETE N OF GUARDRAIL E SIDE OF FRONTAGE ROAD ON E SIDE OF I-55. STAMPED US DEPT OF AGRICULTURE FOREST SERVICE T33N R9E PLS2962 2002. ELEV=522.830 | BM 8  | DISK IN CONCRETE ±125' N OF ENTRANCE TO EXXON MOBILE OFFICE BUILDING AT THE E SIDE OF FRONTAGE ROAD, CONC. CYLINDER ± 16" ABOVE GROUND. ELEV=552.297 | BM 15 | RR SPIKE IN 1ST POWER POLE N OF DOW CHEMICAL PLANT GATE G ON W SIDE OF W FRONTAGE ROAD. ELEV=524.023  |
| BM RR   | TOP OF CONCRETE ROW MARKER N SIDE OF BLODGETT RD, W SIDE OF RR TRACKS, ± 1'N OF POWER POLE. ELEV=522.750   | BM 9  | BOX CUT ON S CORNER OF TRAFFIC HANDHOLE FOUNDATION AT THE SE CORNER OF ARSENAL ROAD AND E FRONTAGE ROAD. ELEV 545.485                                | BM 16 | DISK IN NE WINGWALL OF W FRONTAGE ROAD BRIDGE OVER GRANT CREEK STAMPED US COAST & GEODETIC SURVEY BENCHMARK G247 1960 (MF 1197). ELEV=521.450 |
| BM 1    | BOX CUT AT TOP OF SE WINGWALL OF GRANT CREEK BRIDGE ON E FRONTAGE RD OF I-55. ELEV=520.800   | BM 10 | RR SPIKE IN 2ND POWER POLE EAST OF E FRONTAGE ROAD, N SIDE OF ARSENAL ROAD ±1' S OF FENCE. ELEV=539.808  |       |   |
| BM 2    | RR SPIKE IN 1ST POWER POLE N OF CPT 203 ±1' ABOVE GROUND. ELEV=529.734   | BM 11 | RR SPIKE IN 2ND POWER POLE WEST OF I-55 SOUTHBOUND ENTRANCE RAMP AT N SIDE OF ARSENAL ROAD, ±1' N OF GUARDRAIL. ELEV=549.615                         |       |   |
| BM 3    | RR SPIKE IN 2ND POWER POLE N OF CPT 205 ±1' ABOVE GROUND. ELEV=531.047   | BM 12 | GUTTER NAIL IN 1ST POWER POLE NORTH OF DURKEE ROAD (NORTH BRANCH), W SIDE OF W FRONTAGE ROAD. ELEV=545.042   |       |   |
| BM 4    | RR SPIKE IN 2ND POWER POLE N OF CPT 207 ±1' ABOVE GROUND. ELEV=534.690   | BM 13 | GUTTER NAIL IN POWER POLE N SIDE OF GATE B ENTRANCE TO DOW CHEMICAL PLAN, W SIDE OF W FRONTAGE ROAD. ELEV=540.800                                    |       |   |
| BM 5    | RR SPIKE IN 1ST POWER POLE N OF CPT 210 ±1' ABOVE GROUND. ELEV=538.174   |       |  |       |   |
| BM 6    | BOX CUT IN TOP OF CONCRETE CULVERT AT S SIDE OF CONTRACTOR'S GATE A ON E SIDE OF E FRONTAGE ROAD. ELEV=543.997   |       |  |       |   |

FILE NAME =  
 D160C31-SHT-AT05.dgn

USER NAME = Tkluegel  
 PLOT SCALE = 1:20  
 PLOT DATE = 12/11/2009

DESIGNED - TRK  
 DRAWN - TRK  
 CHECKED - DLT  
 DATE - 12/18/09

REVISED -  
 REVISED -  
 REVISED -  
 REVISED -

STATE OF ILLINOIS  
 DEPARTMENT OF TRANSPORTATION

ALIGNMENTS, TIES, AND BENCHMARKS

SCALE: 1"=20' SHEET NO. 5 OF 9 SHEETS STA. TO STA.

| F.A.I. RTE.        | SECTION      | COUNTY | TOTAL SHEETS                                    | SHEET NO. |
|--------------------|--------------|--------|---|-----------|
| 55                 | (99-1&2)AC-3 | WILL   | 524   | 33        |
| CONTRACT NO. 60C31 |              |        | FED. ROAD DIST. NO. 1 ILLINOIS FED. AID PROJECT |           |