

FILE NAME =
 D168C31-SHT-REM05.dgn

USER NAME = TKJuegel
 PLOT SCALE = 1:50
 PLOT DATE = 12/11/2009

DESIGNED - JTF
 DRAWN - JTF
 CHECKED - DLT
 DATE - 12/18/09

REVISED -
 REVISED -
 REVISED -
 REVISED -

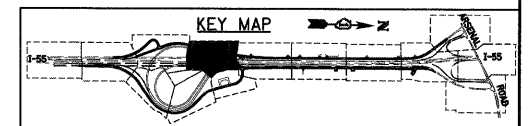
STATE OF ILLINOIS
 DEPARTMENT OF TRANSPORTATION

EXISTING PLAN AND REMOVALS

- EXISTING LEGEND
- PAVEMENT REMOVAL
 - PAVED SHOULDER REMOVAL
 - DRIVEWAY PAVEMENT REMOVAL
 - HOT MIX ASPHALT SURFACE REMOVAL
 - TREE REMOVAL WITH UNIT DIAMETER TRUNK
 - LINEAL REMOVAL ITEM
 - CP-100 CONTROL POINT NUMBER

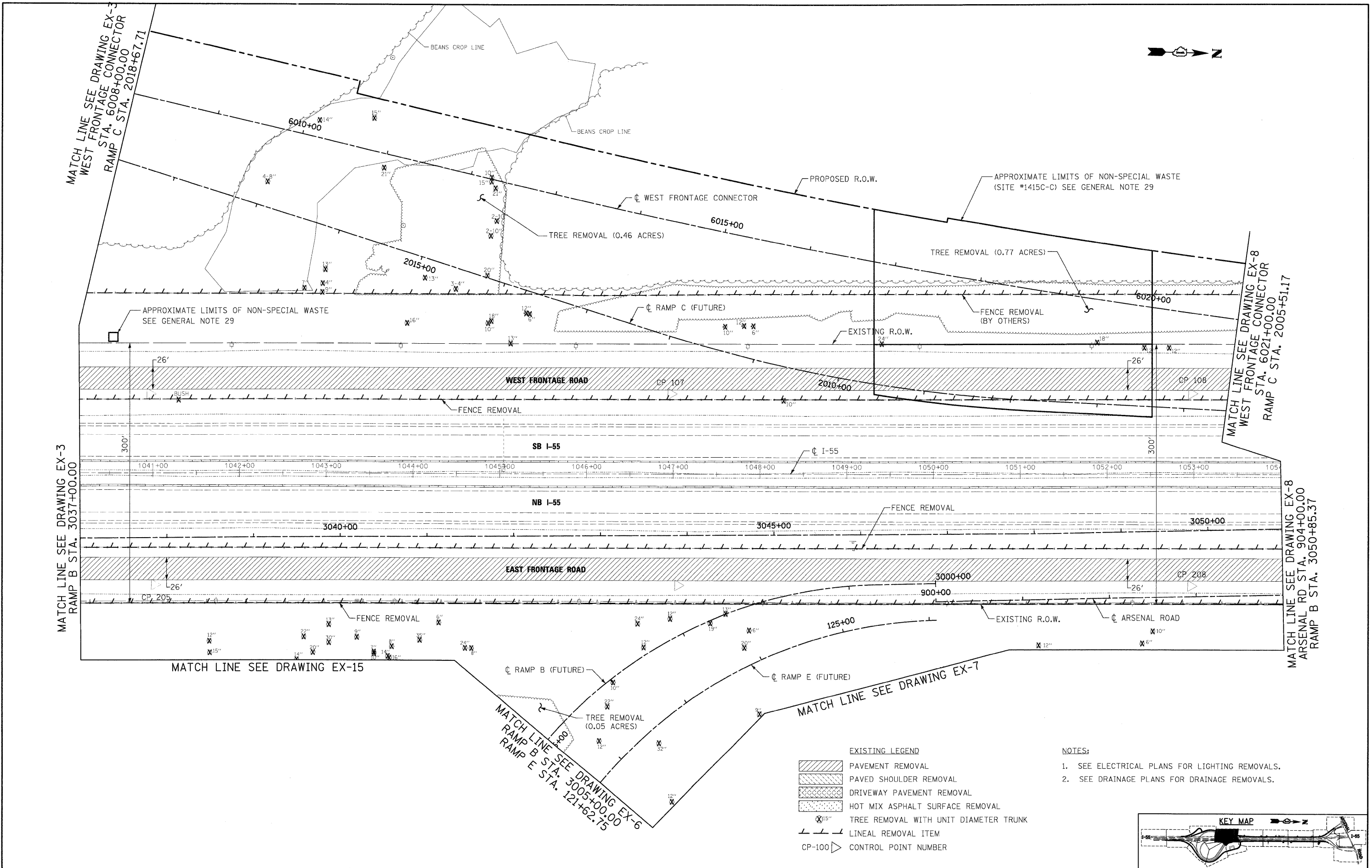
NOTES:

1. SEE ELECTRICAL PLANS FOR LIGHTING REMOVALS.
2. SEE DRAINAGE PLANS FOR DRAINAGE REMOVALS.



F.A.I. RTE.	SECTION	COUNTY	TOTAL SHEETS	SHEET NO.
55	(99-1&2)AC-3	WILL	524	42
FED. ROAD DIST. NO. 1 ILLINOIS FED. AID PROJECT			CONTRACT NO. 60C31	

SCALE: 1"=50' SHEET NO. 5 OF 15 SHEETS STA. TO STA.



MATCH LINE SEE DRAWING EX-3
 WEST FRONTAGE CONNECTOR
 RAMP C STA. 6008+00.00
 RAMP C STA. 2018+67.71

MATCH LINE SEE DRAWING EX-3
 RAMP B STA. 3037+00.00

MATCH LINE SEE DRAWING EX-15

MATCH LINE SEE DRAWING EX-6
 RAMP B STA. 3005+00.00
 RAMP E STA. 121+62.75

MATCH LINE SEE DRAWING EX-8
 WEST FRONTAGE CONNECTOR
 STA. 6021+00.00
 RAMP C STA. 2005+51.17

MATCH LINE SEE DRAWING EX-8
 ARSENAL RD STA. 904+00.00
 RAMP B STA. 3050+85.37