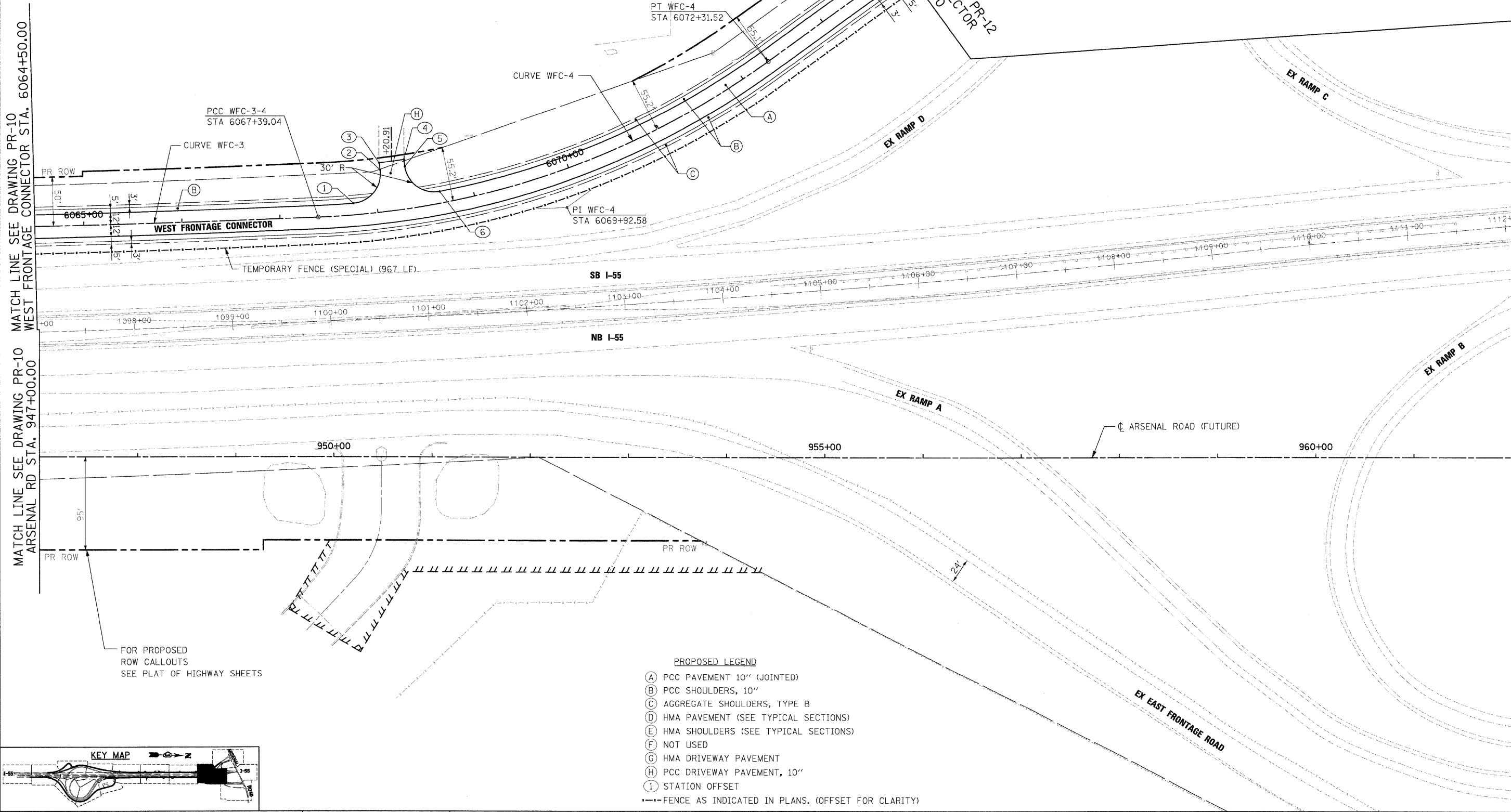


NO.	STATION	OFFSET
①	6067+75.96	12.00' LT
②	6068+07.54	43.04' LT
③	6068+07.42	50.19' LT
④	6068+34.47	50.19' LT
⑤	6068+34.34	43.04' LT
⑥	6068+65.93	11.99' LT

NOTE:  
FOR CURVE DATA, SUPERELEVATION AND TRANSITION RATES  
SEE ALIGNMENTS, TIES AND BENCHMARKS  
DRAWING NOS. AT-1 TO AT-7

FOR PROPOSED ROW CALLOUTS  
SEE PLAT OF HIGHWAY SHEETS



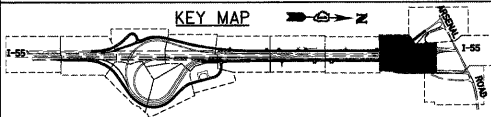
MATCH LINE SEE DRAWING PR-10 WEST FRONTAGE CONNECTOR STA. 6064+50.00

MATCH LINE SEE DRAWING PR-10 ARSENAL RD STA. 947+00.00

MATCH LINE SEE DRAWING PR-13 ARSENAL RD STA. 962+00.00

FOR PROPOSED ROW CALLOUTS  
SEE PLAT OF HIGHWAY SHEETS

- PROPOSED LEGEND**
- (A) PCC PAVEMENT 10" (JOINTED)
  - (B) PCC SHOULDERS, 10"
  - (C) AGGREGATE SHOULDERS, TYPE B
  - (D) HMA PAVEMENT (SEE TYPICAL SECTIONS)
  - (E) HMA SHOULDERS (SEE TYPICAL SECTIONS)
  - (F) NOT USED
  - (G) HMA DRIVEWAY PAVEMENT
  - (H) PCC DRIVEWAY PAVEMENT, 10"
  - (I) STATION OFFSET
  - FENCE AS INDICATED IN PLANS. (OFFSET FOR CLARITY)



McDonough Associates Inc.  
Engineers / Architects  
130 East Randolph Street Chicago, Illinois 60601

FILE NAME = D:\60C31-SHT-PLAN1.dgn

USER NAME = TKIuegel  
PLOT SCALE = 1:50  
PLOT DATE = 12/14/2009

DESIGNED - JTF  
DRAWN - JTF  
CHECKED - DLT  
DATE - 12/18/09

REVISED -  
REVISED -  
REVISED -  
REVISED -

**STATE OF ILLINOIS  
DEPARTMENT OF TRANSPORTATION**

**PROPOSED PLAN**

SCALE: 1"=50' SHEET NO. 11 OF 15 SHEETS STA. TO STA.

F.A.I. RTE.	SECTION	COUNTY	TOTAL SHEETS	SHEET NO.
55	(99-1&2)AC-3	WILL	524	63
				CONTRACT NO. 60C31

FED. ROAD DIST. NO. 1 ILLINOIS FED. AID PROJECT