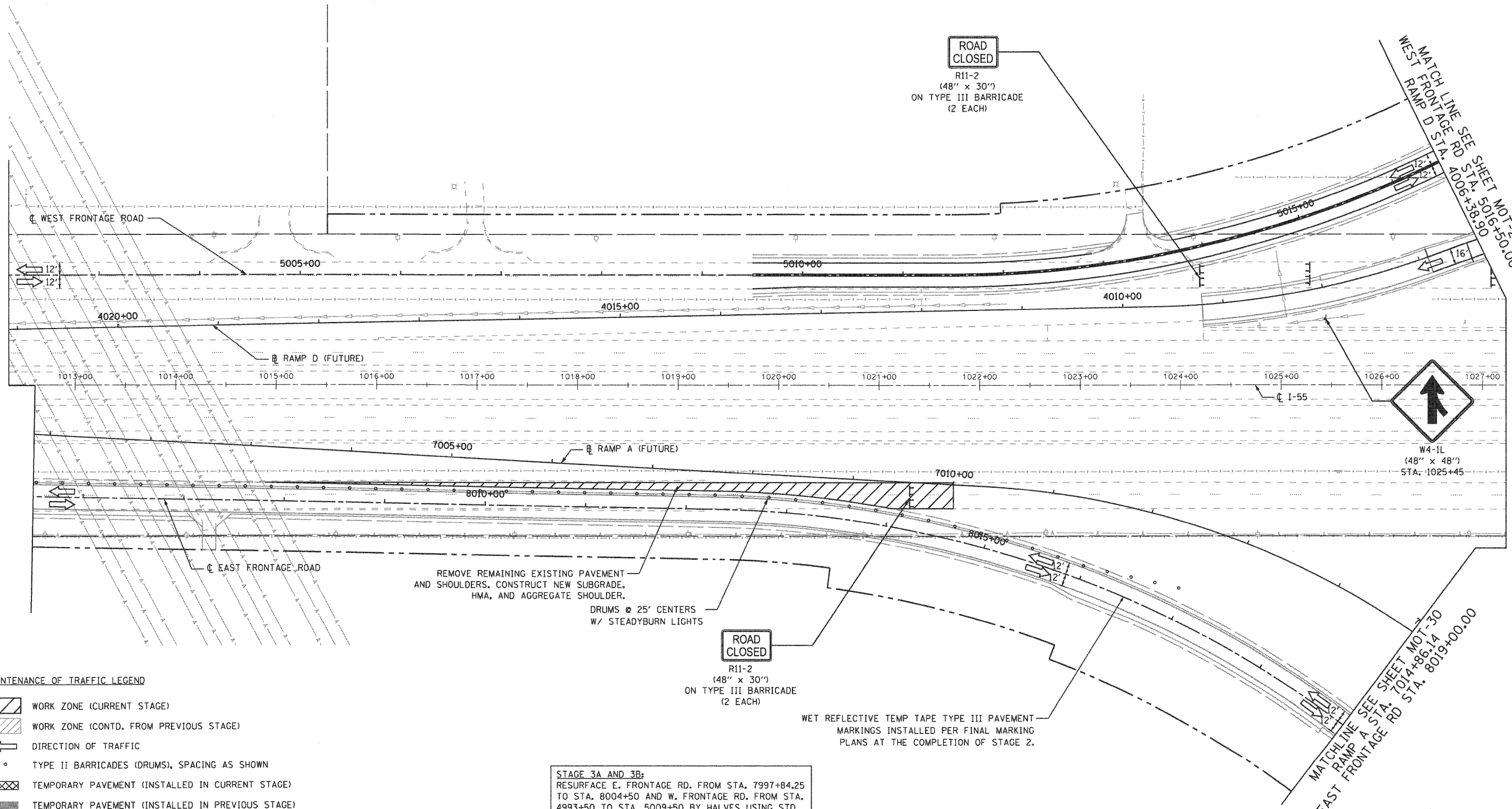
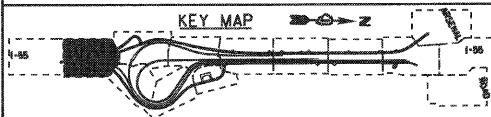


EJM ENGINEERING, INC.
 411 South Wells Street Suite 800
 Chicago, Illinois 60607



- MAINTENANCE OF TRAFFIC LEGEND**
- WORK ZONE (CURRENT STAGE)
 - WORK ZONE (CONTD. FROM PREVIOUS STAGE)
 - DIRECTION OF TRAFFIC
 - TYPE II BARRICADES (DRUMS), SPACING AS SHOWN
 - TEMPORARY PAVEMENT (INSTALLED IN CURRENT STAGE)
 - TEMPORARY PAVEMENT (INSTALLED IN PREVIOUS STAGE)



FILE NAME = ...ND160C31-SHT-STAGING302.dgn	USER NAME = gres	DESIGNED - GR	REVISED -
PLOT SCALE = 1:500	CHECKED - RY	DRAWN - GR	REVISED -
PLOT DATE = 12/16/2009	DATE - 12/18/2009		REVISED -

**STATE OF ILLINOIS
 DEPARTMENT OF TRANSPORTATION**

**MAINTENANCE OF TRAFFIC
 STAGE 3**

SCALE: 1"=50' SHEET NO. 1 OF 10 SHEETS STA. TO STA.

F.A.I. RTE. 55	SECTION (99-1&2)-3	COUNTY WILL	TOTAL SHEETS 524	SHEET NO. 115
FED. ROAD DIST. NO. 1 ILLINOIS FED. AID PROJECT			CONTRACT NO. 60C31	