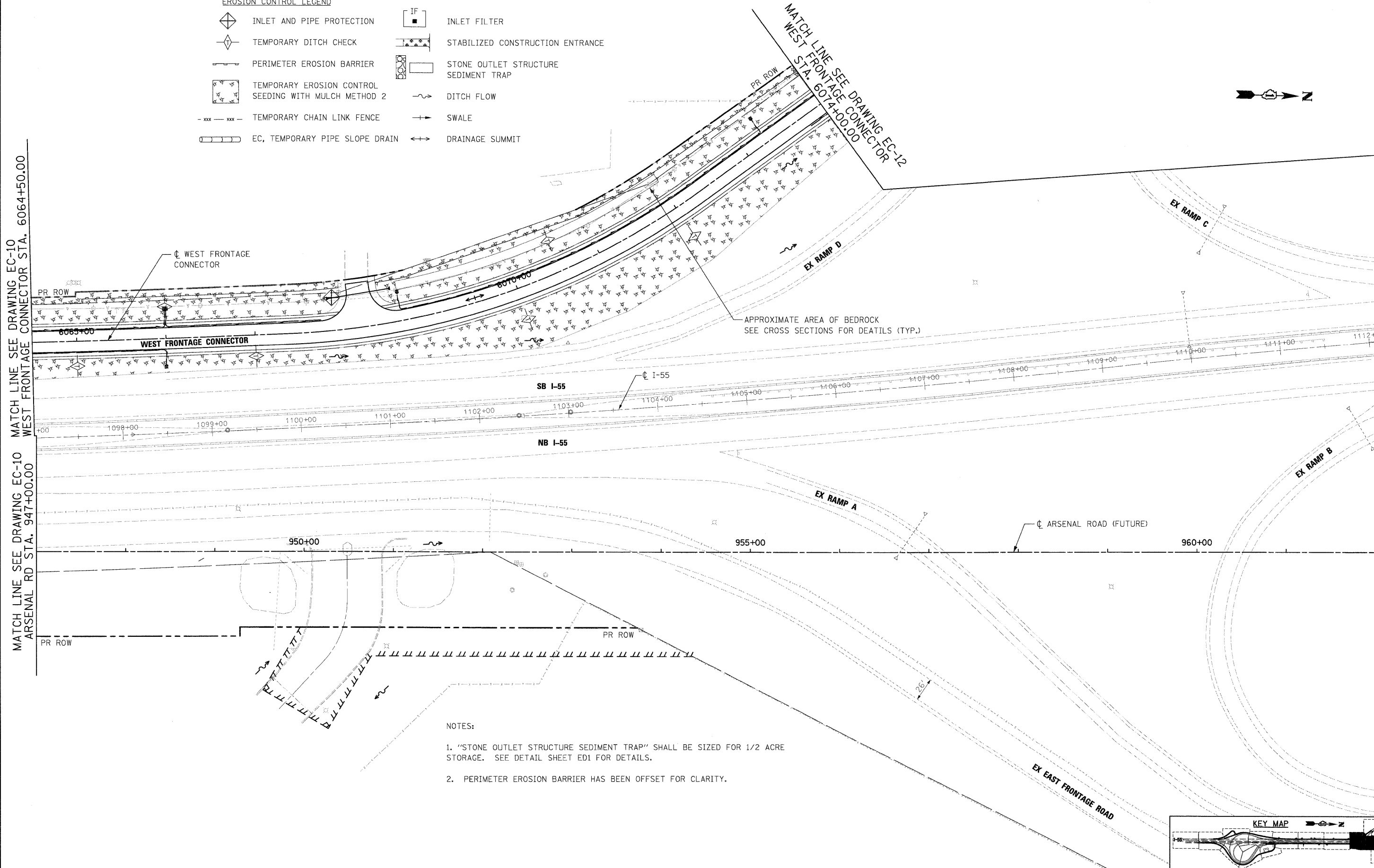


EROSION CONTROL LEGEND

- | | | | |
|--|--|--|---|
| | INLET AND PIPE PROTECTION | | INLET FILTER |
| | TEMPORARY DITCH CHECK | | STABILIZED CONSTRUCTION ENTRANCE |
| | PERIMETER EROSION BARRIER | | STONE OUTLET STRUCTURE
SEDIMENT TRAP |
| | TEMPORARY EROSION CONTROL
SEEDING WITH MULCH METHOD 2 | | DITCH FLOW |
| | TEMPORARY CHAIN LINK FENCE | | SWALE |
| | EC, TEMPORARY PIPE SLOPE DRAIN | | DRAINAGE SUMMIT |



- NOTES:**
- "STONE OUTLET STRUCTURE SEDIMENT TRAP" SHALL BE SIZED FOR 1/2 ACRE STORAGE. SEE DETAIL SHEET ED1 FOR DETAILS.
 - PERIMETER EROSION BARRIER HAS BEEN OFFSET FOR CLARITY.

McDonough Associates Inc.
 Engineers / Architects
 130 East Randolph Street, Chicago, Illinois 60601

FILE NAME = D160C31-SHT-EROS21.dgn	USER NAME = TKluegel	DESIGNED - JCL	REVISED -
PLOT SCALE = 1:50	CHECKED - DLT	DRAWN - JCL	REVISED -
PLOT DATE = 12/11/2009	DATE - 12/18/09	CHECKED -	REVISED -

**STATE OF ILLINOIS
DEPARTMENT OF TRANSPORTATION**

EROSION AND SEDIMENT CONTROL PLAN

SCALE: 1"=50' SHEET NO. 11 OF 15 SHEETS STA. TO STA.

KEY MAP				
F.A.I RTE. 55	SECTION (99-1&2)AC-3	COUNTY WILL	TOTAL SHEETS 524	SHEET NO. 138
FED. ROAD DIST. NO. 1 ILLINOIS FED. AID PROJECT			CONTRACT NO. 60C31	