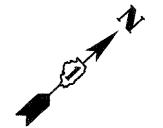


NOTES:
 1. FOR PLACEMENT OF RAISED REFLECTIVE PAVEMENT MARKERS, SPACING AND COLOR, SEE STANDARD TC-12.



THERMOPLASTIC PAVEMENT MARKING
 - LINE 4" (DOUBLE YELLOW)
 THERMOPLASTIC PAVEMENT MARKING
 - LINE 4" (WHITE)
 RAISED REFL PAVT MKR (TYP.)
 SEE NOTES

FILE NAME = 0160C31-SHT-PMK04.dgn	USER NAME = TKLuegel	DESIGNED - MJT	REVISED -
		DRAWN - MJT	REVISED -
		CHECKED - DLT	REVISED -
		DATE - 12/18/09	REVISED -

STATE OF ILLINOIS
 DEPARTMENT OF TRANSPORTATION

PAVEMENT MARKING PLAN

SCALE: 1"=50' SHEET NO. 4 OF 15 SHEETS STA. TO STA.

F.A.I. RTE.	SECTION	COUNTY	TOTAL SHEETS	SHEET NO.
55	(99-1&2)AC-3	WILL	524	253
FED. ROAD DIST. NO. 1 ILLINOIS FED. AID PROJECT			CONTRACT NO. 60C31	

