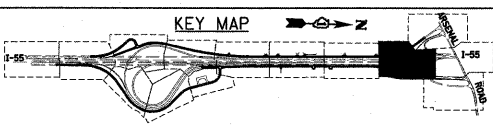


MATCH LINE SEE DRAWING LS-10  
 WEST FRONTAGE CONNECTOR STA. 6064+50.00

MATCH LINE SEE DRAWING LS-10  
 WEST FRONTAGE CONNECTOR STA. 6064+50.00

MATCH LINE SEE DRAWING LS-10  
 ARSENAL RD STA. 947+00.00

MATCH LINE SEE DRAWING LS-10  
 ARSENAL RD STA. 947+00.00



FILE NAME =  
 D:\90C31\5HT-LNDSCP11.dgn

USER NAME = j1stour

DESIGNED - MJT  
 DRAWN - MJT  
 CHECKED - DLT  
 DATE - 12/18/09

REVISIONS

REVISIONS	REVISIONS
REVISIONS	REVISIONS
REVISIONS	REVISIONS
REVISIONS	REVISIONS

REVISIONS

REVISIONS	REVISIONS
REVISIONS	REVISIONS
REVISIONS	REVISIONS
REVISIONS	REVISIONS

**STATE OF ILLINOIS  
 DEPARTMENT OF TRANSPORTATION**

**LANDSCAPE PLAN**

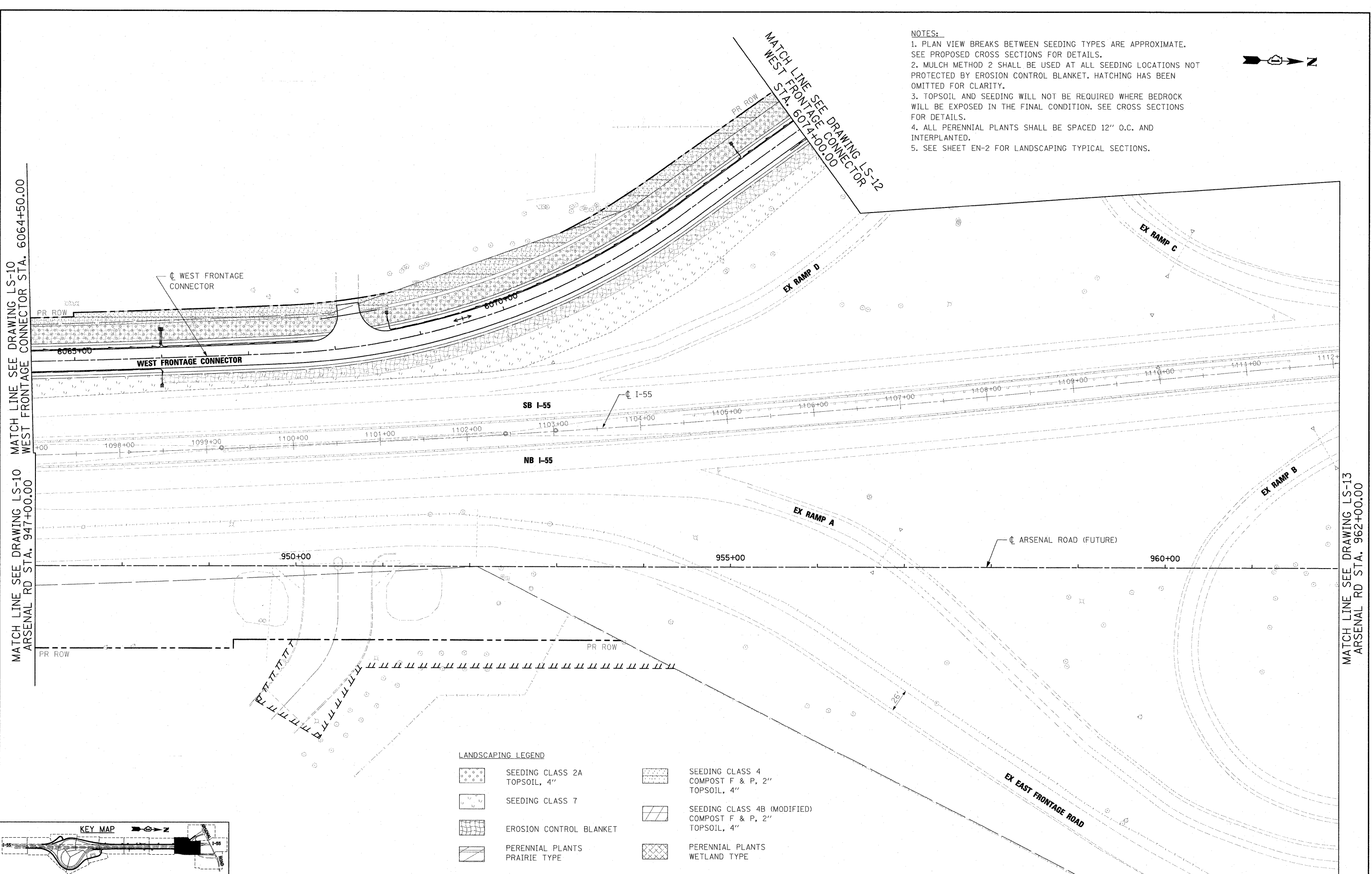
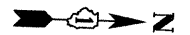
SCALE: 1"=50' SHEET NO. 11 OF 15 SHEETS STA. TO STA.

F.A.I. RTE. 55	SECTION (99-1&2)AC-3	COUNTY WILL	TOTAL SHEETS 524	SHEET NO. 275
CONTRACT NO. 60C31				
FED. ROAD DIST. NO. 1 ILLINOIS FED. AID PROJECT				

**LANDSCAPING LEGEND**

- |  |                                  |  |   |
|--|----------------------------------|--|---|
|  | SEEDING CLASS 2A<br>TOPSOIL, 4"  |  | SEEDING CLASS 4<br>COMPOST F & P, 2"<br>TOPSOIL, 4"             |
|  | SEEDING CLASS 7                  |  | SEEDING CLASS 4B (MODIFIED)<br>COMPOST F & P, 2"<br>TOPSOIL, 4" |
|  | EROSION CONTROL BLANKET          |  | PERENNIAL PLANTS<br>PRAIRIE TYPE                                |
|  | PERENNIAL PLANTS<br>WETLAND TYPE |  |   |

- NOTES:**
1. PLAN VIEW BREAKS BETWEEN SEEDING TYPES ARE APPROXIMATE. SEE PROPOSED CROSS SECTIONS FOR DETAILS.
  2. MULCH METHOD 2 SHALL BE USED AT ALL SEEDING LOCATIONS NOT PROTECTED BY EROSION CONTROL BLANKET. HATCHING HAS BEEN OMITTED FOR CLARITY.
  3. TOPSOIL AND SEEDING WILL NOT BE REQUIRED WHERE BEDROCK WILL BE EXPOSED IN THE FINAL CONDITION. SEE CROSS SECTIONS FOR DETAILS.
  4. ALL PERENNIAL PLANTS SHALL BE SPACED 12" O.C. AND INTERPLANTED.
  5. SEE SHEET EN-2 FOR LANDSCAPING TYPICAL SECTIONS.



MATCH LINE SEE DRAWING LS-13  
 ARSENAL RD STA. 962+00.00