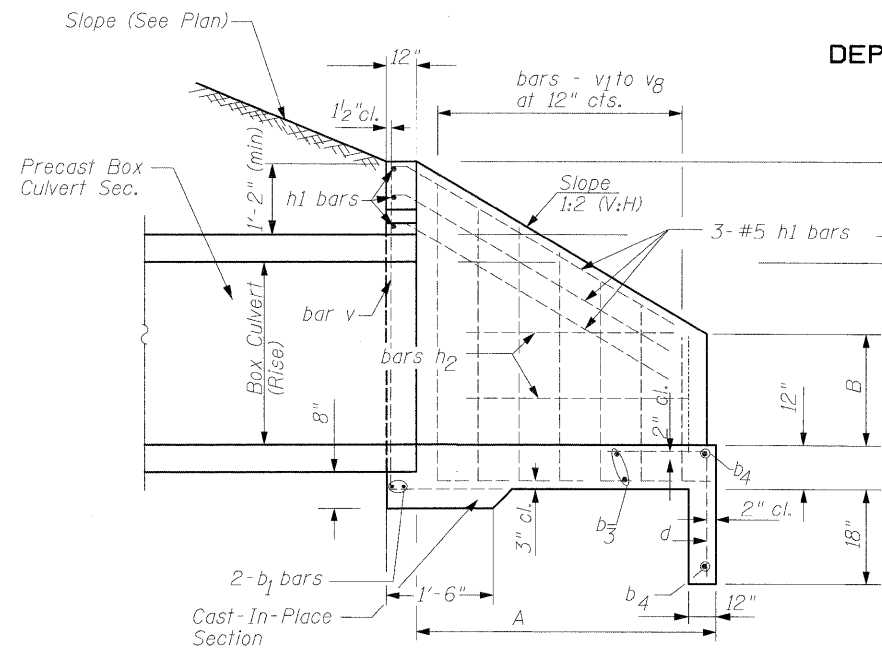
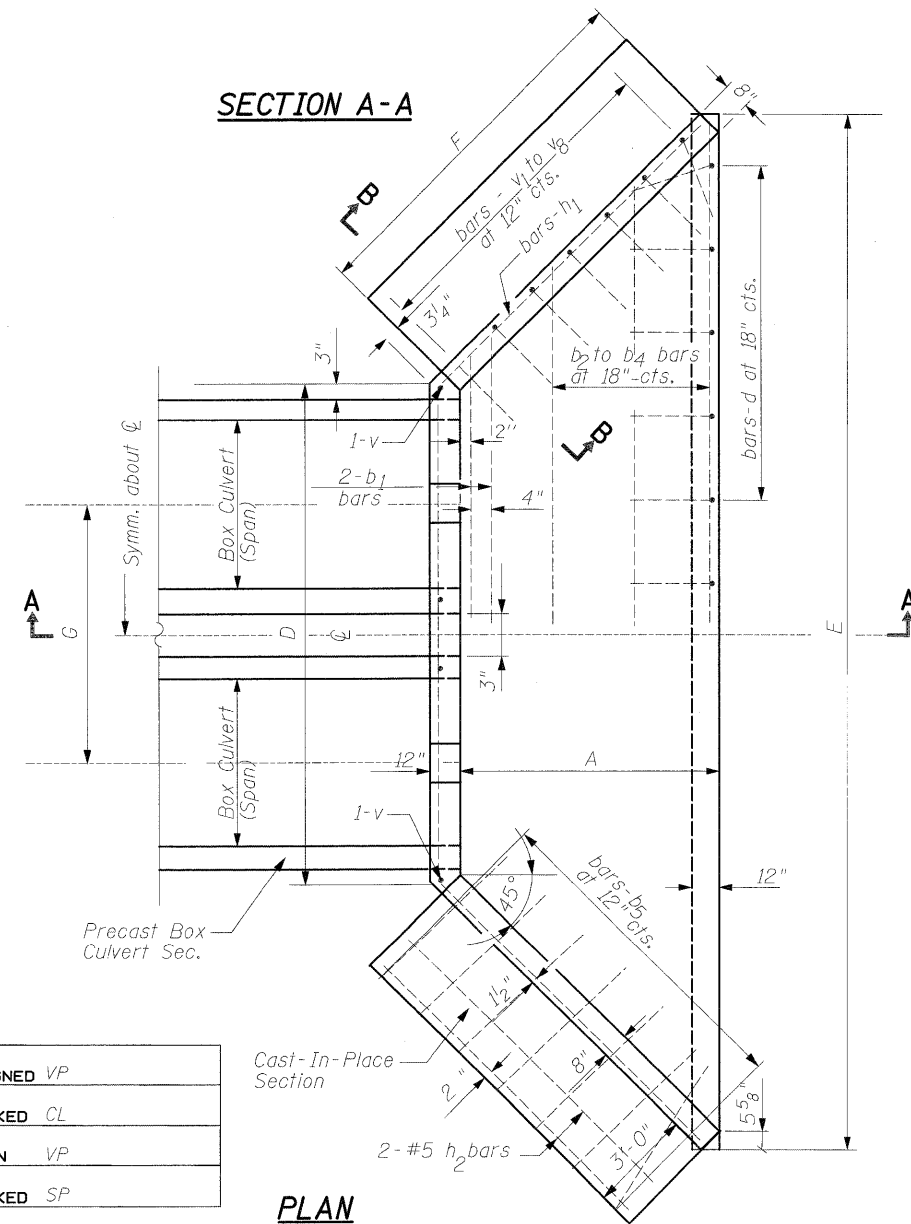


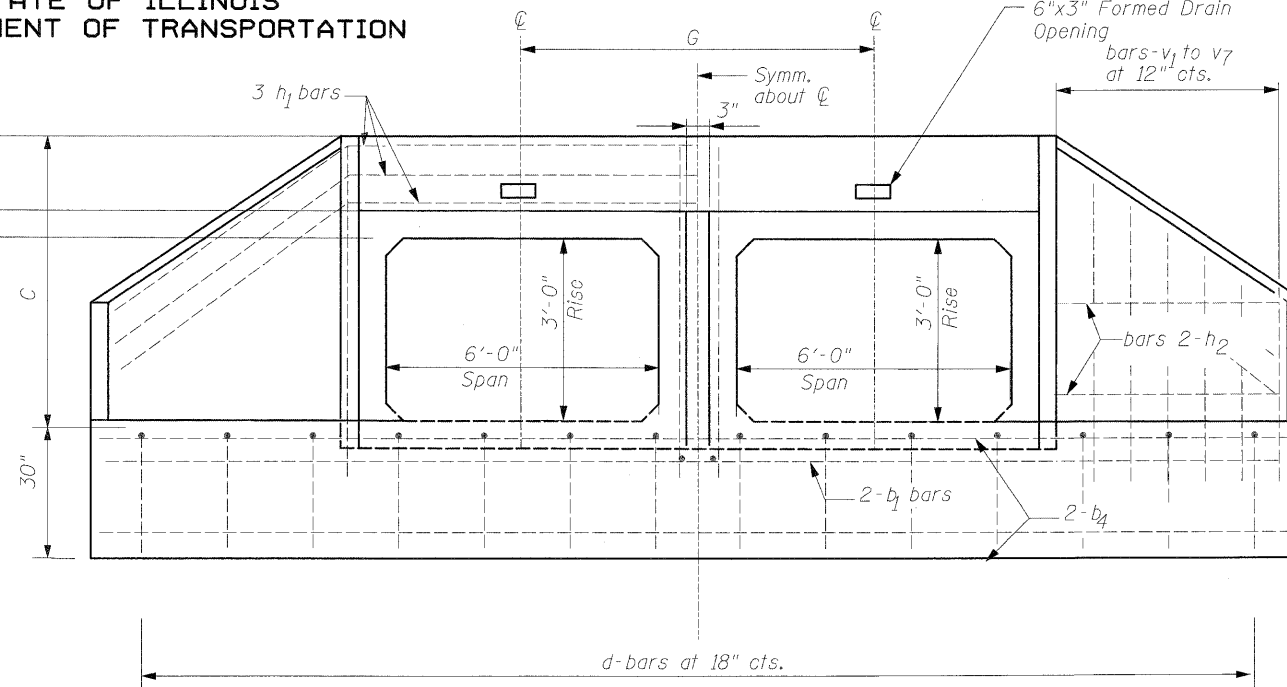
STATE OF ILLINOIS  
DEPARTMENT OF TRANSPORTATION



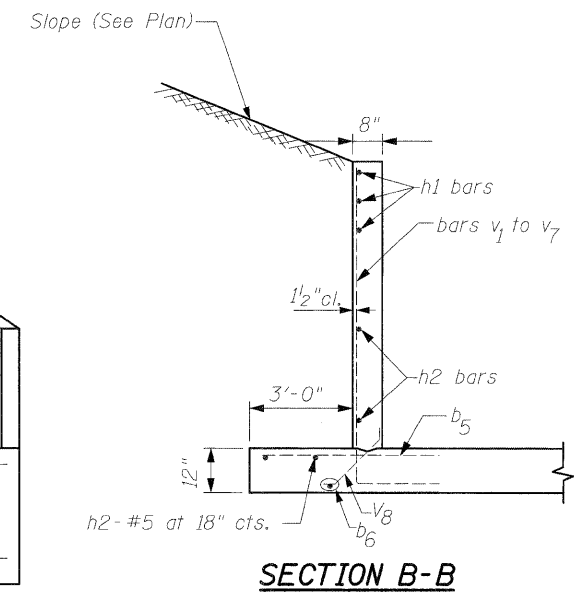
**SECTION A-A**



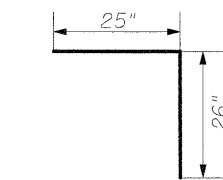
**PLAN**



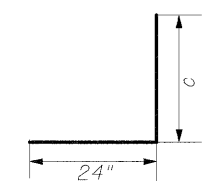
**END ELEVATION**



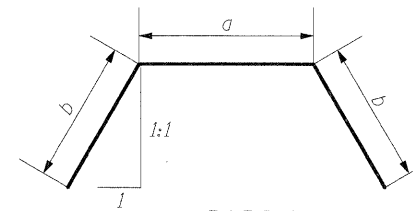
**SECTION B-B**



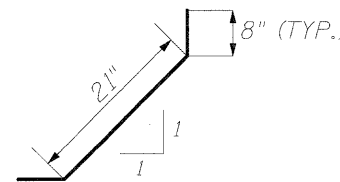
**No. 4 BAR-d**



**BARS - v<sub>1</sub> to v<sub>7</sub>**



**BARS-h<sub>1</sub>**  
Bend in field



**BARS-v<sub>8</sub>**

**BARS IN ONE END SECTION**

Box Culvert 6'x3'	Bars	No.
	d	17
	b <sub>1</sub>	2
	b <sub>2</sub>	1
	b <sub>3</sub>	2
	b <sub>4</sub>	2
	b <sub>5</sub>	14
	b <sub>6</sub>	2
	h <sub>1</sub>	3
	h <sub>2</sub>	4
	v	4
	v <sub>1</sub>	2
	v <sub>2</sub>	2
	v <sub>3</sub>	2
	v <sub>4</sub>	2
	v <sub>5</sub>	2
	v <sub>6</sub>	2
	v <sub>7</sub>	2
	v <sub>8</sub>	14

**DIMENSIONS OF STRAIGHT BARS**

Bar	Size	Length
b <sub>1</sub>	No. 5	14'-11"
b <sub>2</sub>	No. 4	17'-11"
b <sub>3</sub>	No. 4	20'-11"
b <sub>4</sub>	No. 4	23'-11"
b <sub>5</sub>	No. 4	5'-11"
b <sub>6</sub>	No. 4	6'-3"
h <sub>2</sub>	No. 5	6'-11"

**DIMENSIONS OF BENT BARS**

No. 5 - bars h <sub>1</sub>			
BARS	a	b	Total Length
h <sub>1</sub>	14'-7"	6'-8"	27'-11"
No. 5 - bars v to v <sub>7</sub>			
BARS	c	Total Length	
v	5'-1"	7'-1"	
v <sub>1</sub>	5'-1"	7'-1"	
v <sub>2</sub>	4'-9"	6'-9"	
v <sub>3</sub>	4'-6"	6'-6"	
v <sub>4</sub>	4'-2"	6'-2"	
v <sub>5</sub>	3'-11"	5'-11"	
v <sub>6</sub>	3'-8"	5'-8"	
v <sub>7</sub>	3'-4"	5'-4"	

**DIMENSIONS AND QUANTITIES**

Box Culvert	Slope of Wing Walls	Dimensions								Concrete for two (2) End Sections (Cu. Yd.)	Reinf. Bars for two (2) End Sections (Lbs.)
		Rise	Span	A	B	C	D	E	F		
36"	72"	1:2	4'-7"	34 1/2"	4'-9"	14-9"	23'-11"	6'-9"	7'-3"	40	925

**NOTE:**

1. Cast-In-Place Reinforced Concrete End Sections shall be constructed of Class SI as per Article 503.

**SINGH**  
SINGH & ASSOCIATES, INC.  
CONSULTING ENGINEERS  
300 W. ADAMS ST.  
CHICAGO, IL 60606  
TEL: (312) 629-0240  
FAX: (312) 629-8449

SHEET NO.  
SHEETS

F.A.I. RTE.	SECTION	COUNTY	TOTAL SHEETS	SHEET NO.
55	(99-1&2)AC-3	WILL	524	341
Sta. 4005+00 (Ramp D)			CONTRACT NO. 60C31	
FED. RD. DIST. NO. 1	ILLINOIS	FED. AID PROJECT		