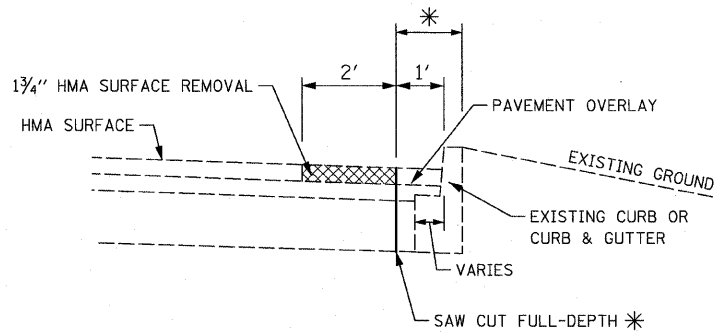
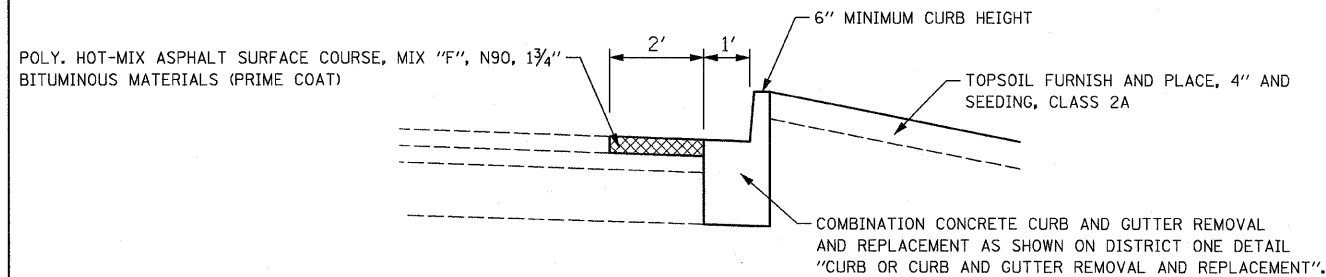


\* THE COST OF THE REMOVAL OF THE EXISTING CURB, CURB & GUTTER, PAVEMENT, PAVEMENT OVERLAY, CURB OUTLET (NOT SHOWN) AND FULL-DEPTH SAW CUTS SHALL BE INCLUDED IN THE CONTRACT PRICE FOR "COMBINATION CONCRETE CURB AND GUTTER REMOVAL AND REPLACEMENT".

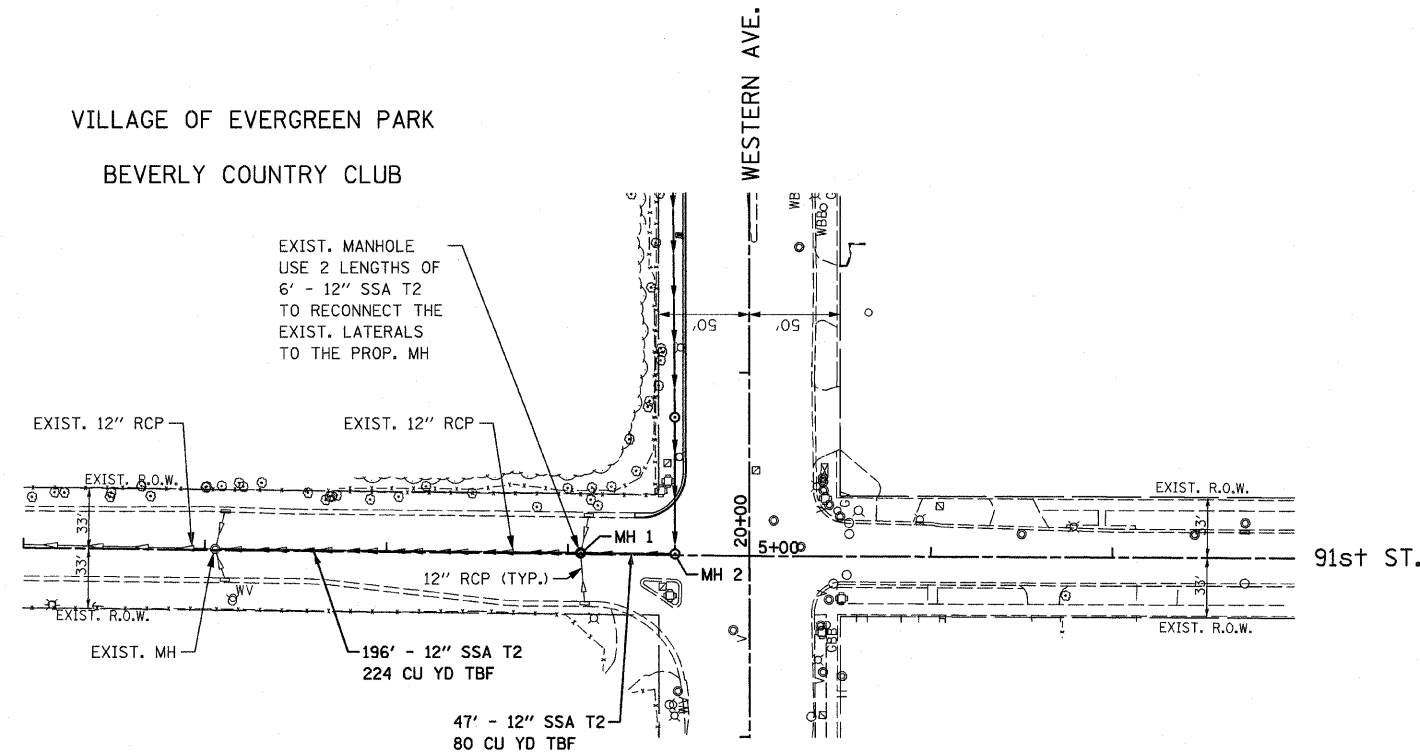


**EXISTING CONDITIONS**  
SECTION THROUGH EXISTING CURB & GUTTER



**PROPOSED CONDITIONS**  
SECTION THROUGH PROPOSED IMPROVEMENT

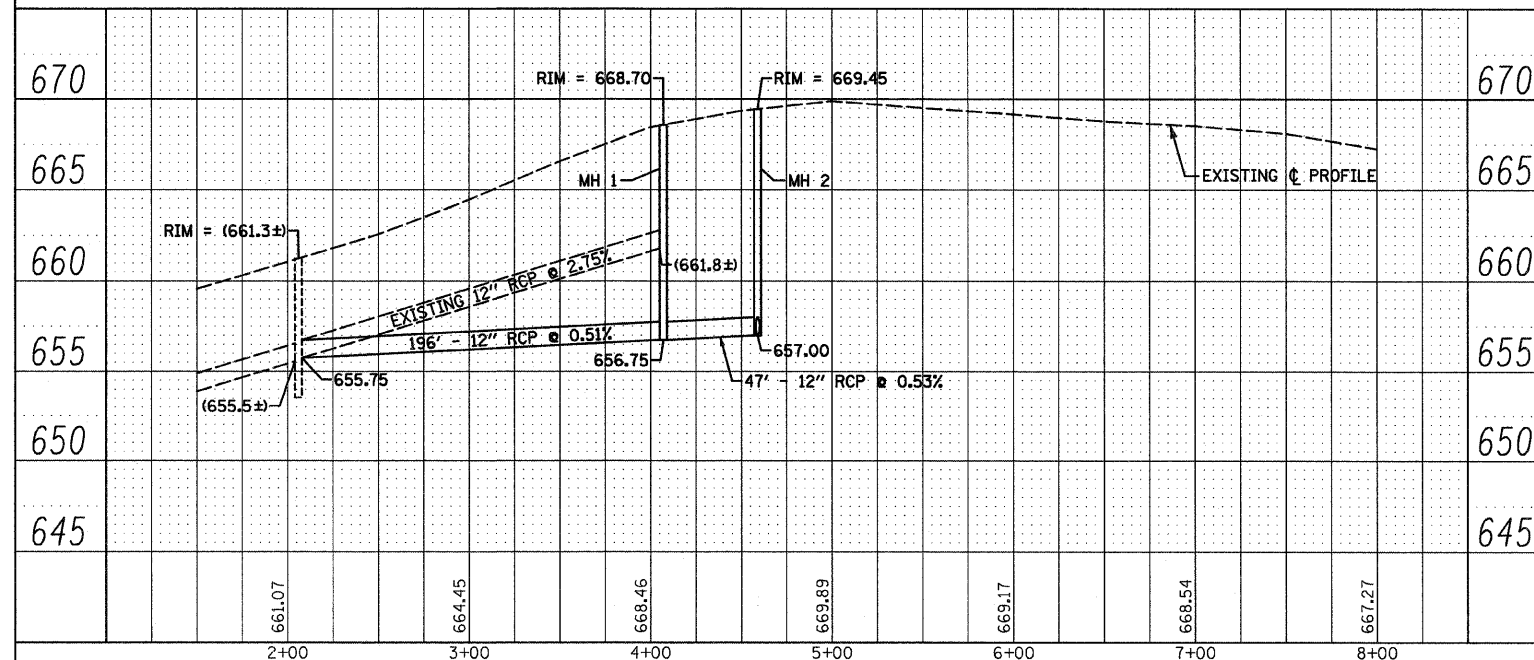
VILLAGE OF EVERGREEN PARK  
BEVERLY COUNTRY CLUB



MH 1  
MH TY A, 4' DIA.  
TY IF CL  
STA. 4+07,  $\phi$   
RIM = 668.70  
E. INV. = 656.75  
W. INV. = 656.75  
N. & S. INV. = MEET EXIST. PIPES

MH 2  
MH TY A, 4' DIA.  
TY IF CL  
STA. 4+59,  $\phi$  = STA. 20+00, 41' LT.  
RIM = 669.45  
N. INV. = 657.00  
W. INV. = 657.00

**NOTE:**  
1. ALL STORM SEWERS ARE RCP UNLESS OTHERWISE NOTED.



FILE NAME = D16015-eh-t-drain4.dgn  
PLOT DATE = 3/22/2010

**CHRISTIAN-ROGE & ASSOCIATES, INC.**  
ENGINEERS-PLANNERS-SURVEYORS  
211 WEST WACKER DRIVE  
CHICAGO, ILLINOIS 60606  
PHONE: (312)372-2023 FAX: (312)372-5274

DESIGNED - S.J.P.	REVISED -
DRAWN - A.C.S.	REVISED -
CHECKED - S.J.P.	REVISED -
DATE - MARCH 19, 2010	REVISED -

STATE OF ILLINOIS  
DEPARTMENT OF TRANSPORTATION

**DRAINAGE AND UTILITY PLAN AND PROFILE**  
91st ST.

SCALE: 1" = 50' SHEET NO. 4 OF 4 SHEETS STA. 2+00 TO STA. 8+00

F.A.P. RTE.	SECTION	COUNTY	TOTAL SHEETS	SHEET NO.
370	2009-015 T	COOK	20	10
FED. ROAD DIST. NO. 1 ILLINOIS FED. AID PROJECT			CONTRACT NO. 60G15	