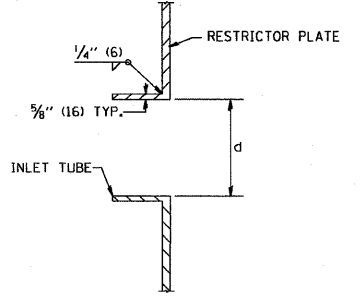
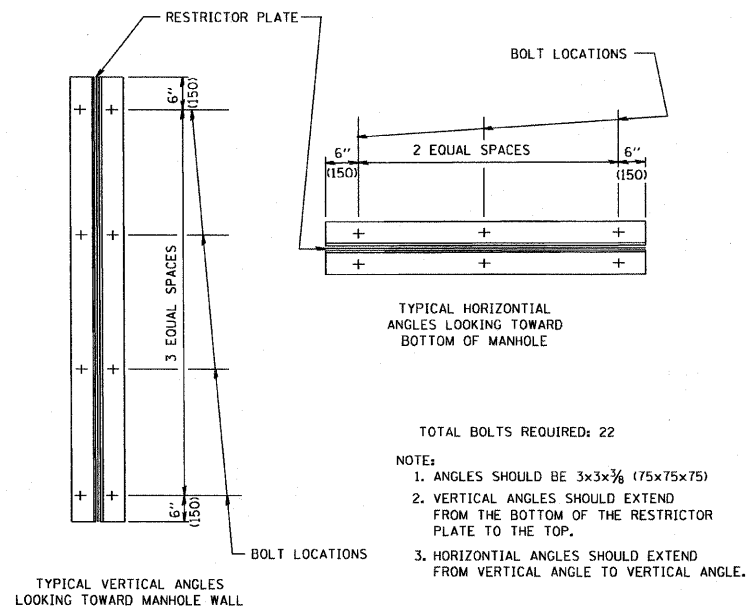


- NOTES:
1. ALL STEEL ANGLES AND PLATES TO BE GALVANIZED AFTER FABRICATION.
 2. ALL RESTRICTOR PLATES, ANGLES AND HARDWARE TO BE INCLUDED IN THE COST OF THE MANHOLE.
 3. BASIS OF PAYMENT: "MANHOLES, TYPE A, 6 FT. (1.8 m)-DIAMETER, TYPE 1, FRAME, CLOSED LID, RESTRICTOR PLATE" EACH



STATION	MANHOLE DIAMETER	FRAME AND GRATE	RESTRICTOR TYPE	INSIDE RESTRICTOR TYPE DIAMETER in. (mm) (d)	INVERT OF RESTRICTOR TYPE	ELEVATION OF TOP OF PLATE OVERFLOW
20+75, LT.	6' DIA.	2 EACH - TYPE 1 FRAME, CLOSED LID	2	5"	657.40	666.23



- TOTAL BOLTS REQUIRED: 22
- NOTE:
1. ANGLES SHOULD BE 3x3x3/8 (75x75x75)
 2. VERTICAL ANGLES SHOULD EXTEND FROM THE BOTTOM OF THE RESTRICTOR PLATE TO THE TOP.
 3. HORIZONTAL ANGLES SHOULD EXTEND FROM VERTICAL ANGLE TO VERTICAL ANGLE.

RESTRICTOR TYPE					
1	2	3	4	5	6
RE-ENTRANT TUBE	SHARP EDGED	SQUARE EDGED	RE-ENTRANT TUBE	SQUARE EDGED	ROUNDED
LENGTH: 1/2 TO 1 DIA. C=.52	C=.61	STREAM CLEARS SIDES C=.61	LENGTH: 2-1/2 DIA. C=.73	LENGTH: 1-1/2 DIA. C=.82	C=.98

VALUES OF "C" FOR CIRCULAR AND SQUARE ORIFICES

STATE OF ILLINOIS
DEPARTMENT OF TRANSPORTATION

MANHOLE WITH
RESTRICTOR PLATE

FILE NAME = W:\diststd\22x34\bd12.dgn	USER NAME = goglianob	DESIGNED - R. SHAH	REVISED - R. SHAH 10-25-94
	PLOT SCALE = 50.000' / IN.	CHECKED -	REVISED - E. GOMEZ 08-28-00
	PLOT DATE = 1/4/2008	DATE - 09-09-94	REVISED - M. GOMEZ 01-08-01

SCALE: NONE	SHEET NO. 1 OF 1 SHEETS	STA. 20+00 TO STA. 46+00	F.A.P. RTE. 370	SECTION 2009-015 T	COUNTY COOK	TOTAL SHEETS 20	SHEET NO. 16
			BD600-04 (BD-12)		CONTRACT NO. 60G15		
FED. ROAD DIST. NO. 1 ILLINOIS FED. AID PROJECT							

ALL DIMENSIONS ARE IN INCHES (MILLIMETERS) UNLESS OTHERWISE SHOWN.