

F.A.P. RTE.	SECTION	COUNTY	TOTAL SHEETS	SHEET NO.
370	2009-015 T	COOK	20	1
FED. ROAD DIST. NO. 1	ILLINOIS	CONTRACT NO. 60G15		

STATE OF ILLINOIS
DEPARTMENT OF TRANSPORTATION
DIVISION OF HIGHWAYS

**PROPOSED
HIGHWAY PLANS**

F.A.P. 370 / WESTERN AVENUE
SECTION: 2009-015 T
87TH STREET TO 91ST STREET
DRAINAGE IMPROVEMENT

COOK COUNTY
C-91-344-09
WORTH AND CALUMET TOWNSHIP
R. 14 E.

FOR INDEX OF SHEETS, SEE SHEET NO. 2

DESIGN DESIGNATION: OTHER PRINCIPAL ARTERIAL
SPEED LIMIT : 35 M.P.H.
2005 ADT = 30,000

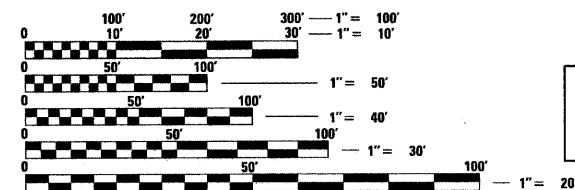
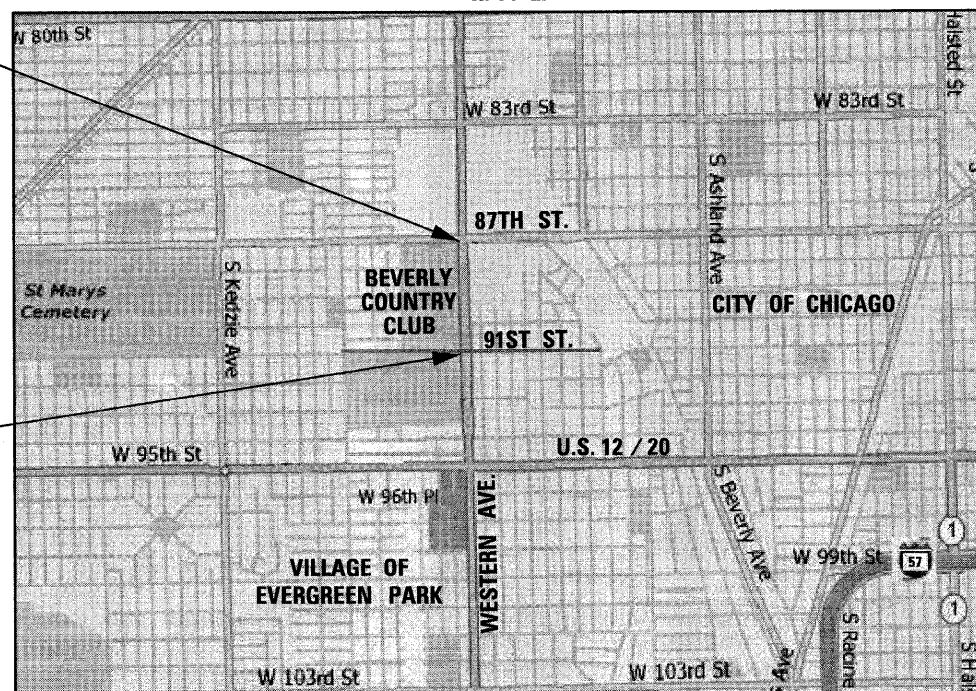
PROJECT LOCATED IN THE
CITY OF CHICAGO AND THE
VILLAGE OF EVERGREEN PARK

D-91-344-09



PROJECT ENDS
STA. 46 + 00

PROJECT BEGINS
STA. 20 + 00



FULL SIZE PLANS HAVE BEEN PREPARED USING STANDARD ENGINEERING SCALES. REDUCED SIZED PLANS WILL NOT CONFORM TO STANDARD SCALES. IN MAKING MEASUREMENTS ON REDUCED PLANS, THE ABOVE SCALES MAY BE USED.

J.U.L.I.E.
JOINT UTILITY LOCATING INFORMATION FOR EXCAVATORS
1-800-892-0123 OR 811
AND
C.U.A.N.
CHICAGO UTILITY ALERT NETWORK
1-312-744-7000

GROSS LENGTH OF PROJECT = 2,600.00 FEET = 0.492 MILES
NET LENGTH OF PROJECT = 2,600.00 FEET = 0.492 MILES

DISTRICT ONE - DESIGN
PROJECT MANAGER : ISAAC KWARTENG (847) 705-4230
PROJECT ENGINEER : ALIX BRICE (847) 705-4552
CONTRACT NO. 60G15

DESIGN SECTION ENGINEER :
CHRISTIAN-ROGE & ASSOCIATES, INC.
ENGINEERS - PLANNERS - SURVEYORS
211 W. WACKER DRIVE CHICAGO, IL 60606
TELEPHONE: 312-372-2023



Birinder S. Sachdeva
BIRINDER S. SACHDEVA, P.E.
EXPIRES: 11-30-2011
March 15, 2010
DATE

STATE OF ILLINOIS
DEPARTMENT OF TRANSPORTATION
DIVISION OF HIGHWAYS
SUBMITTED MARCH 18 2010
Diane M. O'Keefe
DEPUTY DIRECTOR OF HIGHWAYS, REGION ONE ENGINEER
May 7 2010
Scott E. Stitt, P.E.
ENGINEER OF DESIGN AND ENVIRONMENT
May 7 2010
Christine M. Roadie
DIRECTOR OF HIGHWAYS, CHIEF ENGINEER

PRINTED BY THE AUTHORITY
OF THE STATE OF ILLINOIS

INDEX OF SHEETS

- 1 COVER SHEET
- 2 INDEX OF SHEETS, LIST OF STATE STANDARDS AND GENERAL NOTES WESTERN AVE.
- 3 SUMMARY OF QUANTITIES WESTERN AVE.
- 4 ALIGNMENT, TIES AND BENCHMARKS WESTERN AVE.
- 5 - 6 ROADWAY PLAN AND PROFILE WESTERN AVE.
- 7 - 10 DRAINAGE AND UTILITY PLAN AND PROFILE WESTERN AVE.
- 11 DETECTOR LOOP REPLACEMENT WESTERN AVE. @ 91st ST.
- 12 - 15 CROSS SECTIONS WESTERN AVE.
- 16 MANHOLE WITH RESTRICTOR PLATE
- 17 PAVEMENT PATCHING FOR HMA SURFACED PAVEMENT
- 18 CURB OR CURB AND GUTTER REMOVAL AND REPLACEMENT
- 19 CITY OF CHICAGO CATCH BASIN, INLET AND MANHOLE DETAILS
- 20 TRAFFIC CONTROL AND PROTECTION FOR SIDE ROADS, INTERSECTIONS AND DRIVEWAYS

LIST OF STATE STANDARDS

STANDARD NO.	DESCRIPTION
000001-05	STANDARD SYMBOLS, ABBREVIATIONS AND PATTERNS
280001-05	TEMPORARY EROSION CONTROL SYSTEMS
442201-03	CLASS C AND D PATCHES
542606-01	REINFORCED CONCRETE PIPE TEE
602016-01	CATCH BASIN, TYPE A
602401-02	MANHOLE, TYPE A
602601-02	PRECAST FLAT SLAB TOP
604001-03	FRAME AND LIDS, TYPE 1
606001-04	CONCRETE CURB TYPE B AND COMBINATION CONCRETE CURB AND GUTTER
701601-06	URBAN LANE CLOSURE, MULTILANE, 1W OR 2W WITH NONTRAVERSABLE MEDIAN
701701-06	URBAN LANE CLOSURE, MULTI LANE INTERSECTION
701901-01	TRAFFIC CONTROL DEVICES
701101-02	
701606-06	

GENERAL NOTES

1. BEFORE STARTING ANY EXCAVATION, THE CONTRACTOR SHALL CALL "JULIE" AT (800) 892-0123 OR 811 AND "C.U.A.N." AT (312) 744-7000 FOR FIELD LOCATIONS OF BURIED ELECTRIC, TELEPHONE AND GAS FACILITIES. (48 HOUR NOTIFICATION IS REQUIRED)
2. THE CONTRACTOR SHALL OBTAIN ALL NECESSARY PERMITS, AS REQUIRED, PRIOR TO COMMENCING WITH CONSTRUCTION.
3. THE CONTRACTOR WILL NOT BE ALLOWED TO SET UP A YARD OR FIELD OFFICE ON STATE PROPERTY WITHOUT WRITTEN PERMISSION FROM THE DEPARTMENT.
4. DO NOT SCALE PLANS FOR CONSTRUCTION DIMENSIONS.

5. THE CONTRACTOR SHALL USE CARE IN REMOVING OR EXCAVATING NEAR ALL EXISTING ITEMS WHICH WILL REMAIN. THE CONTRACTOR SHALL ALSO BE RESPONSIBLE FOR SUPPORTING AND PROTECTING THE EXISTING CITY OF CHICAGO STREET LIGHT POLE ADJACENT TO THE STORM SEWER INSTALLATION. THE COST OF THIS WORK SHALL BE INCLUDED IN THE COST OF THE STORM SEWER PIPE. ANY DAMAGE DONE TO EXISTING ITEMS BY THE CONTRACTOR SHALL BE REPAIRED AT THE CONTRACTOR'S EXPENSE.

6. 10 FEET TRANSITIONS SHALL BE USED TO MATCH PROPOSED CURB AND GUTTER ITEMS OF WORK TO EXISTING CURBS AND GUTTERS AND CONDITIONS IN THE FIELD UNLESS OTHERWISE SHOWN. THE TRANSITIONS SHALL BE PAID FOR AT THE CONTRACT UNIT PRICE FOR THE PROPOSED ITEMS OF WORK SPECIFIED.

7. SAW CUTTING PRIOR TO ANY REMOVAL ITEMS NOTED ON THE PLANS OR DIRECTED BY THE ENGINEER SHALL BE CONSIDERED INCLUDED IN THE CONTRACT UNIT PRICE FOR THOSE ITEMS.

8. THE CONTRACTOR SHALL COORDINATE CONSTRUCTION ACTIVITIES WITH UTILITY COMPANIES, THE VILLAGE OF EVERGREEN PARK AND THE CITY OF CHICAGO.

9. THE AREA BETWEEN THE BACK OF CURB AND THE EXISTING FENCE SHALL BE GRADED TO MEET THE EXISTING CONDITIONS. 4" OF THE EXISTING MATERIAL SHALL BE REMOVED TO ALLOW FOR THE PLACEMENT OF 4" OF TOPSOIL. THE REMOVAL OF THE MATERIAL WILL BE PAID FOR AS "REMOVAL AND DISPOSAL OF UNSUITABLE MATERIAL.

10. THE REPLACEMENT CURB AND GUTTER SHALL HAVE A MINIMUM 6" CURB HEIGHT.

11. THE REMOVAL OF EXISTING STORM SEWERS AND DRAINAGE STRUCTURES SHALL BE INCLUDED IN THE COST OF THE CONTRACT WHEN THEY WILL BE REMOVED DURING THE INSTALLATION OF THE PROPOSED ITEMS OF WORK.

12. WESTERN AVENUE WAS RECENTLY RESURFACED. THE GUTTER FLAG WAS COMPLETELY PAVED OVER FOR THE ENTIRE LENGTH OF THE PROJECT. AS SUCH, THE CONTRACTOR SHALL VERIFY ALL RIM ELEVATIONS AND LOW POINTS PRIOR TO CONSTRUCTION.

EROSION CONTROL NOTES

1. THE TEMPORARY EROSION CONTROL SYSTEMS SHALL BE REMOVED AS DIRECTED BY THE ENGINEER AFTER IT IS NO LONGER NEEDED.
2. SEEDING CLASS, 2A, EROSION CONTROL BLANKET AND FERTILIZER SHALL BE PLACED ON ALL DISTURBED AREAS.
3. ALL CATCH BASINS IN THE CURB AND GUTTER SHALL HAVE "INLET FILTERS" INSTALLED. ALL CATCH BASINS OUTSIDE THE PAVEMENT SHALL HAVE "INLET AND PIPE PROTECTION" INSTALLED.

4. AT THE END OF EACH DAYS WORK, THE WESTERN AVENUE PAVEMENT AND GUTTER FLAG SHALL BE MECHANICALLY SWEEPED CLEAN PRIOR TO OPENING THE LANE TO TRAFFIC. THE COST OF THIS WORK SHALL BE INCLUDED IN THE COST OF THE STORM SEWER ITEMS.

GENERAL NOTES - CITY OF CHICAGO DEPARTMENT OF WATER MANAGEMENT

1. PRIOR TO START OF CONSTRUCTION, A PERMIT IS REQUIRED FROM THE SEWER UNIT OF THE DEPARTMENT OF WATER MANAGEMENT FOR ANY UNDERGROUND SEWER WORK INCLUDING ADJUSTMENT OF SEWER STRUCTURES AND REMOVAL/REPLACEMENT OF FRAMES AND LIDS. PERMIT MUST BE OBTAINED BY DRAINLAYER CURRENTLY LICENSED FROM THE SEWER UNIT OF THE DEPARTMENT OF WATER MANAGEMENT.
2. THE CONTRACTOR IS RESPONSIBLE FOR THE ADEQUATE PROTECTION OF THE EXISTING SEWERS, DRAIN CONNECTIONS, SEWER STRUCTURES, AND BENCH MONUMENTS DURING CONSTRUCTION OPERATIONS AND USE OF HEAVY EQUIPMENT IN THE LIMITS OF THE PROJECT.
3. THE CONTRACTOR MUST LOCATE AND PROMPTLY AND PROPERLY CONNECT TO THE NEW SEWERS ALL LIVE HOUSE DRAINS, CATCH BASIN DRAINS AND OTHER EXISTING LATERALS, DRAINS AND SEWERS OF WHATEVER NATURE, WHICH ARE CONNECTED TO THE EXISTING SEWERS BEING REPAIRED OR REPLACED.
4. IN LOCATIONS WHERE THE MAIN SEWER IS NOT BEING REPLACED AND THE EXISTING DRAINAGE FACILITIES ARE DISTURBED OR DAMAGED DURING CONSTRUCTION BY THE CONTRACTOR, IT WILL BE THE CONTRACTOR'S RESPONSIBILITY TO RESTORE AND REPLACE THE DAMAGED FACILITIES AT HIS/HER EXPENSE TO THE SATISFACTION OF THE SEWER UNIT OF THE DEPARTMENT OF WATER MANAGEMENT.
5. IN CASE OF ANY DAMAGE TO THE CITY'S SEWER SYSTEM, PRIVATE AND PUBLIC DRAIN CONNECTIONS, AND/OR BENCH MONUMENTS, THE CONTRACTOR MUST CONTACT THE SEWER UNIT OF THE DEPARTMENT OF WATER MANAGEMENT IMMEDIATELY AT PHONE NUMBER (312) 747-8117 OR (312) 747-7893. THE CONTRACTOR MUST, AT HIS/HER COST, REPLACE THE AFFECTED SEWERS, DRAIN CONNECTIONS, SEWER STRUCTURES AND/OR BENCH MONUMENTS AS NECESSARY. THE SEWER FLOWS MUST BE MAINTAINED AT ALL TIMES.
6. ON WORK COMPLETION, THE CONTRACTOR MUST PROVIDE THE SEWER UNIT OF THE DEPARTMENT OF WATER MANAGEMENT, FOR REVIEW AND ACCEPTANCE, A POST-CONSTRUCTION VIDEOTAPED INSPECTION OF THE SEWER MAINS. THE COST OF THIS WORK SHALL BE INCLUDED IN THE CONTRACT UNIT PRICE FOR "STORM SEWER, DUCTILE IRON PIPE, CLASS 52 8".
7. AS-BUILT PLANS OF NEW OR REPLACED SEWERS IN THE PUBLIC RIGHT-OF-WAY MUST BE SUBMITTED TO THE DWM SEWER DESIGN SECTION WITHIN 30 DAYS AFTER COMPLETION OF THE PROJECT. THE AS-BUILT PLANS MUST BE SEALED BY A PROFESSIONAL ENGINEER OR REGISTERED LAND SURVEYOR AND BE SUBMITTED WITH THE APPROPRIATE TRANSMITTAL FORM AVAILABLE FROM THE RESIDENT ENGINEER. PLAN AND PROFILE DRAWINGS OF THE SEWERS AND SEWER STRUCTURES MUST BE SUBMITTED ON A COMPACT DISK IN *TIF FORMAT. ALL ELECTRONIC FILES MUST BE SUBMITTED IN A FILE FOLDER WITH ONE FILE NAME REFLECTING THE ADDRESSES OF THE PROJECT, WITH STREET NAME FIRST: (E.G. JACKSON ST. 300-500 S.) A HARD COPY OF THE AS-BUILT PLANS MUST ALSO BE SUBMITTED.
8. REFER TO SEWER UNIT OF THE DEPARTMENT OF WATER MANAGEMENT "DETAIL SPECIFICATIONS FOR SEWER CONSTRUCTION, BOOK 3" FOR COMPLETE REQUIREMENTS.
9. PRE-CONSTRUCTION VIDEO TAPED INSPECTION IS REQUIRED PRIOR TO ISSUANCE OF SEWER PERMIT.
10. THE CONTRACTOR SHALL INSTALL 3" VORTEX RESTRICTORS ON THE CATCH BASIN AT STATION 45+00, 40'LT. THIS COST SHALL BE INCLUDED IN THE CONTRACT UNIT PRICE FOR "CATCH BASIN, TYPE A, 5'-DIAMETER, TYPE 1 FRAME OPEN LID (CITY OF CHICAGO)".

SUMMARY OF QUANTITIES			URBAN	
CODE NO.	ITEM	UNIT	100% STATE	CONSTRUCTION TYPE CODE
			TOTAL QUANTITIES	4007 URBAN
20100110	TREE REMOVAL (6 TO 15 UNITS DIAMETER)	UNIT	37	37
20100210	TREE REMOVAL (OVER 15 UNITS DIAMETER)	UNIT	30	30
20201200	REMOVAL AND DISPOSAL OF UNSUITABLE MATERIAL	CU YD	420	420
20800150	TRENCH BACKFILL	CU YD	351	351
21101615	TOPSOIL FURNISH AND PLACE, 4"	SQ YD	3,800	3,800
25000210	SEEDING, CLASS 2A	ACRE	1	1
25000400	NITROGEN FERTILIZER NUTRIENT	POUND	71	71
25000500	PHOSPHORUS FERTILIZER NUTRIENT	POUND	71	71
25000600	POTASSIUM FERTILIZER NUTRIENT	POUND	71	71
25100630	EROSION CONTROL BLANKET	SQ YD	3,800	3,800
28000500	INLET AND PIPE PROTECTION	EACH	9	9
28000510	INLET FILTERS	EACH	17	17
40600200	BITUMINOUS MATERIALS (PRIME COAT)	TON	1	1
40601005	HOT-MIX ASPHALT REPLACEMENT OVER PATCHES	TON	36	36
40603595	POLYMERIZED HOT-MIX ASPHALT SURFACE COURSE, MIX "F", N90	TON	60	60
44000156	HOT-MIX ASPHALT SURFACE REMOVAL, 1 3/4"	SQ YD	600	600
44001700	COMBINATION CONCRETE CURB AND GUTTER REMOVAL AND REPLACEMENT	FOOT	2,600	2,600
44002207	HOT-MIX ASPHALT REMOVAL OVER PATCHES, 1 3/4"	SQ YD	500	500
44201789	CLASS D PATCHES, TYPE II, 12 INCH	SQ YD	119	119
44201796	CLASS D PATCHES, TYPE IV, 12 INCH	SQ YD	362	362
54216210	REINFORCED CONCRETE PIPE TEE, 30" PIPE WITH 12" RISER	EACH	2	2
54216220	REINFORCED CONCRETE PIPE TEE, 36" PIPE WITH 12" RISER	EACH	2	2
550A0340	STORM SEWERS, CLASS A, TYPE 2, 12"	FOOT	374	374
550A0380	STORM SEWERS, CLASS A, TYPE 2, 18"	FOOT	409	409

* SPECIALTY ITEM

SUMMARY OF QUANTITIES			URBAN	
CODE NO.	ITEM	UNIT	100% STATE	CONSTRUCTION TYPE CODE
			TOTAL QUANTITIES	4007 URBAN
550A0410	STORM SEWERS, CLASS A, TYPE 2, 24"	FOOT	348	348
550A0430	STORM SEWERS, CLASS A, TYPE 2, 30"	FOOT	322	322
550A0450	STORM SEWERS, CLASS A, TYPE 2, 36"	FOOT	1,005	1,005
552A0200	STORM SEWERS JACKED IN PLACE, CLASS A, 12"	FOOT	69	69
60200105	CATCH BASINS, TYPE A, 4'-DIAMETER, TYPE 1 FRAME, OPEN LID	EACH	16	16
60200805	CATCH BASINS, TYPE A, 4'-DIAMETER, TYPE 8 GRATE	EACH	5	5
60204505	CATCH BASINS, TYPE A, 5'-DIAMETER, TYPE 8 GRATE	EACH	4	4
60218400	MANHOLES, TYPE A, 4'-DIAMETER, TYPE 1 FRAME, CLOSED LID	EACH	2	2
67100100	MOBILIZATION	L SUM	1	1
70102625	TRAFFIC CONTROL AND PROTECTION, STANDARD 701606	L SUM	1	1
70102630	TRAFFIC CONTROL AND PROTECTION, STANDARD 701601	L SUM	1	1
70102635	TRAFFIC CONTROL AND PROTECTION, STANDARD 701701	L SUM	1	1
* 78000100	THERMOPLASTIC PAVEMENT MARKING - LETTERS AND SYMBOLS	SQ FT	36	36
* 78000200	THERMOPLASTIC PAVEMENT MARKING - LINE 4"	FOOT	500	500
* 78000400	THERMOPLASTIC PAVEMENT MARKING - LINE 6"	FOOT	100	100
* 78000650	THERMOPLASTIC PAVEMENT MARKING - LINE 24"	FOOT	22	22
* 72400600	RELOCATE SIGN PANEL ASSEMBLY - TYPE B	EACH	1	1
* 88600600	DETECTOR LOOP REPLACEMENT	FOOT	230	230
X0321598	MANHOLES, TYPE A, 6'-DIAMETER, WITH 2 TYPE 1 FRAMES, CLOSED LIDS, RESTRICTOR PLATE	EACH	1	1
Z0013798	CONSTRUCTION LAYOUT	L SUM	1	1
XX005688	STORM SEWER, DUCTILE IRON PIPE, CLASS 52, 8"	FOOT	75	75
X0326359	CATCH BASINS, TYPE A, 5'-DIAMETER, TYPE 1 FRAME, OPEN LID (CITY OF CHICAGO)	EACH	1	1

HOT-MIX ASPHALT MIXTURE REQUIREMENTS		
ROADWAY NAME	MIXTURE TYPE	AIR VOIDS @ Ndes
WESTERN AVENUE	PATCHING	
	POLYMERIZED HOT-MIX ASPHALT SURFACE COURSE, MIX "F", N90 (IL 9.5mm)	4% @ 90 GYR.
	CLASS D PATCHES (HMA BINDER IL-19mm)	4% @ 70 GYR.
	HMA REPLACEMENT OVER PATCHES (HMA BINDER IL-19mm)	4% @ 70 GYR.

NOTES:

1. THE UNIT WEIGHT USED TO CALCULATE ALL HMA SURFACE MIXTURE QUANTITIES IS 112 LBS/SQ YD/IN.
2. THE "AC TYPE" FOR POLYMERIZED HMA MIXES SHALL BE "SBS/SBR PG 70-22" AND FOR NON-POLYMERIZED HMA THE "AC TYPE" SHALL BE "PG 64-22" UNLESS MODIFIED BY DISTRICT ONE SPECIAL PROVISIONS. FOR "PERCENT OF RAP" SEE DISTRICT ONE SPECIAL PROVISIONS.

FILE NAME = D160G15-shs-500.dgn
PLOT DATE = 3/22/2010



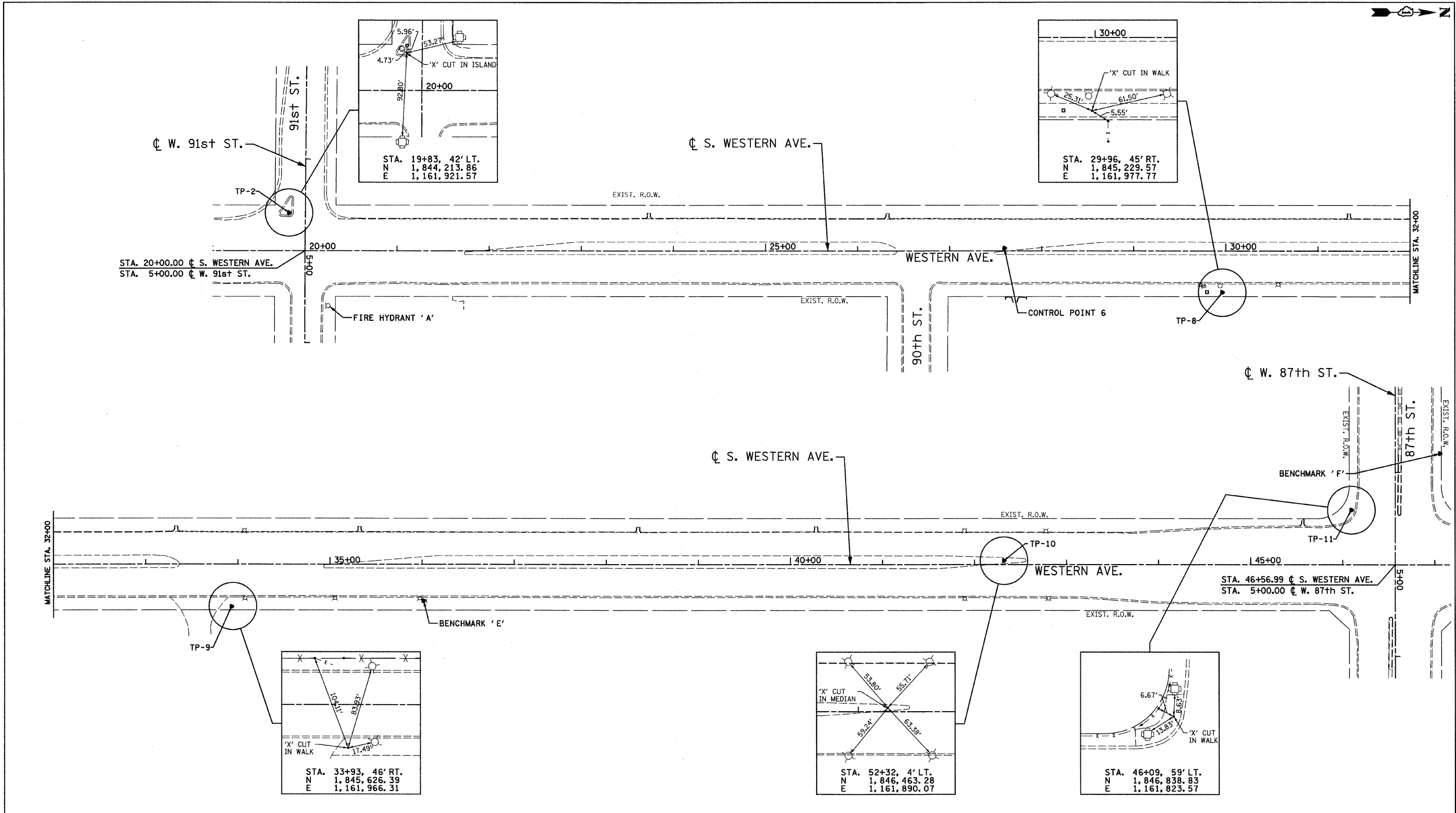
DESIGNED	-	S.J.P.	REVISED	-
DRAWN	-	A.C.S.	REVISED	-
CHECKED	-	S.J.P.	REVISED	-
DATE	-	MARCH 19, 2010	REVISED	-

STATE OF ILLINOIS
DEPARTMENT OF TRANSPORTATION

SUMMARY OF QUANTITIES
WESTERN AVE.

SCALE: NONE SHEET NO. 1 OF 1 SHEETS STA. 20+00 TO STA. 46+00

F.A.P. RTE.	SECTION	COUNTY	TOTAL SHEETS	SHEET NO.
370	2009-015 T	COOK	20	3
CONTRACT NO. 60G15				Rev
FED. ROAD DIST. NO. 1 ILLINOIS FED. AID PROJECT				



ALIGNMENT COORDINATES		
STATION	N	E
20+00.00	1,844,232.45	1,161,962.82
46+56.99	1,846,888.19	1,161,881.39

CONTROL POINT 6 ELEV. 669.96
 SET RAILROAD SPIKE IN THE PAVEMENT IN THE LEFT TURN LANE OF WESTERN AVENUE 96' NORTH OF THE CL OF W. 90th ST. AT STA. 27+60, 3'LT.

FIRE HYDRANT 'A' ELEV. 671.06
 'X' CUT ON THE NORTHEAST FLANGE BOLT OF THE FIRE HYDRANT LOCATED AT THE NORTHEAST CORNER OF THE INTERSECTION OF WESTERN AVENUE AND W. 91st ST.

BENCHMARK 'E' ELEV. 667.81
 '□' CUT IN THE SOUTHEAST CORNER OF THE CONCRETE FOUNDATION FOR WATER LINE / VALVE SURFACE ACCESS AT THE EAST SIDE OF WESTERN AVENUE AT STA. 36+01, 39'RT.

BENCHMARK 'F' ELEV. 664.46
 CHICAGO STANDARD BENCHMARK IRON BAR INSIDE A CAST IRON ACCESS COVER ON THE NORTH SIDE OF 87th STREET WEST OF WESTERN AVENUE AT STA.

FILE NAME = D160G15-eh-t-ATB.dgn
 PLOT DATE = 3/22/2010



DESIGNED -	S.J.P.	REVISED -	
DRAWN -	A.C.S.	REVISED -	
CHECKED -	S.J.P.	REVISED -	
DATE -	MARCH 19, 2010	REVISED -	

**STATE OF ILLINOIS
 DEPARTMENT OF TRANSPORTATION**

**ALIGNMENT, TIES AND BENCHMARKS
 WESTERN AVE.**

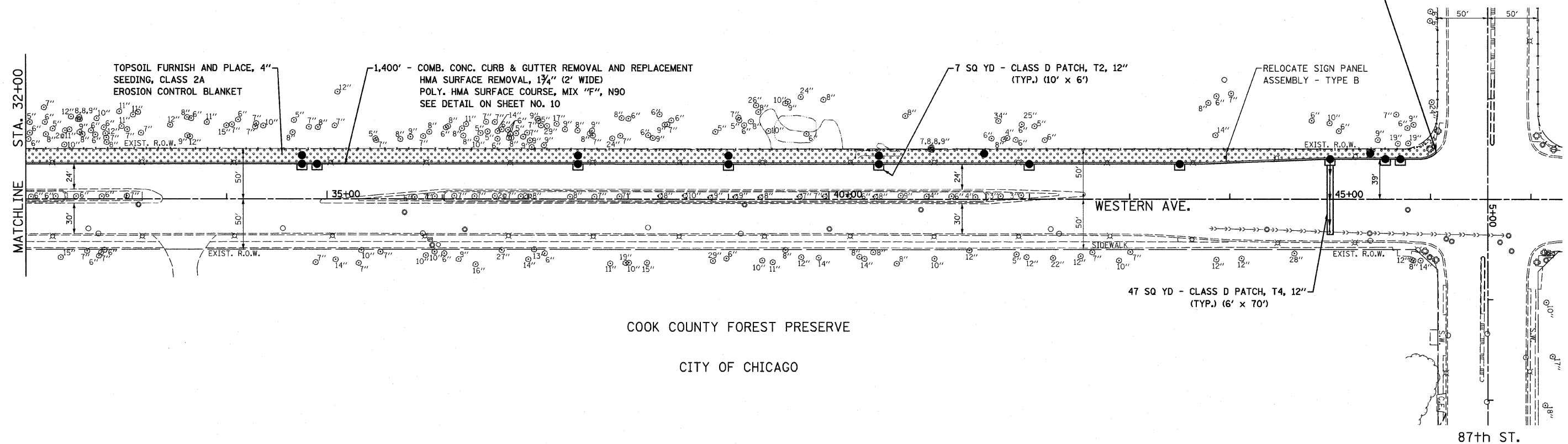
SCALE: 1" = 50' SHEET NO. 1 OF 1 SHEETS STA. 20+00 TO STA. 46+00

F.A.P. RTE.	SECTION	COUNTY	TOTAL SHEETS	SHEET NO.
370	2009-015 T	COOK	20	4
CONTRACT NO. 60G15				
FED. ROAD DIST. NO. 1 ILLINOIS FED. AID PROJECT				

VILLAGE OF EVERGREEN PARK

BEVERLY COUNTRY CLUB

PROJECT ENDS
STA. 46+00



COOK COUNTY FOREST PRESERVE

CITY OF CHICAGO

87th St.



669.95 668.84	EXIST. C PROFILE EXIST. E.O.P. LEFT	669.46 668.47	668.64 668.11	667.86 667.33	668.05 667.56	668.33 667.17	668.03 666.80	667.72 666.50	667.54 666.28	667.21 666.00	666.81 665.67	665.94 665.35	665.54 664.91	665.15 664.57	665.01 664.57	664.61
32+00		33+00	34+00	35+00	36+00	37+00	38+00	39+00	40+00	41+00	42+00	43+00	44+00	45+00	46+00	47+00

FILE NAME = 0160015-shr-plan2.dgn
PLOT DATE = 3/22/2018

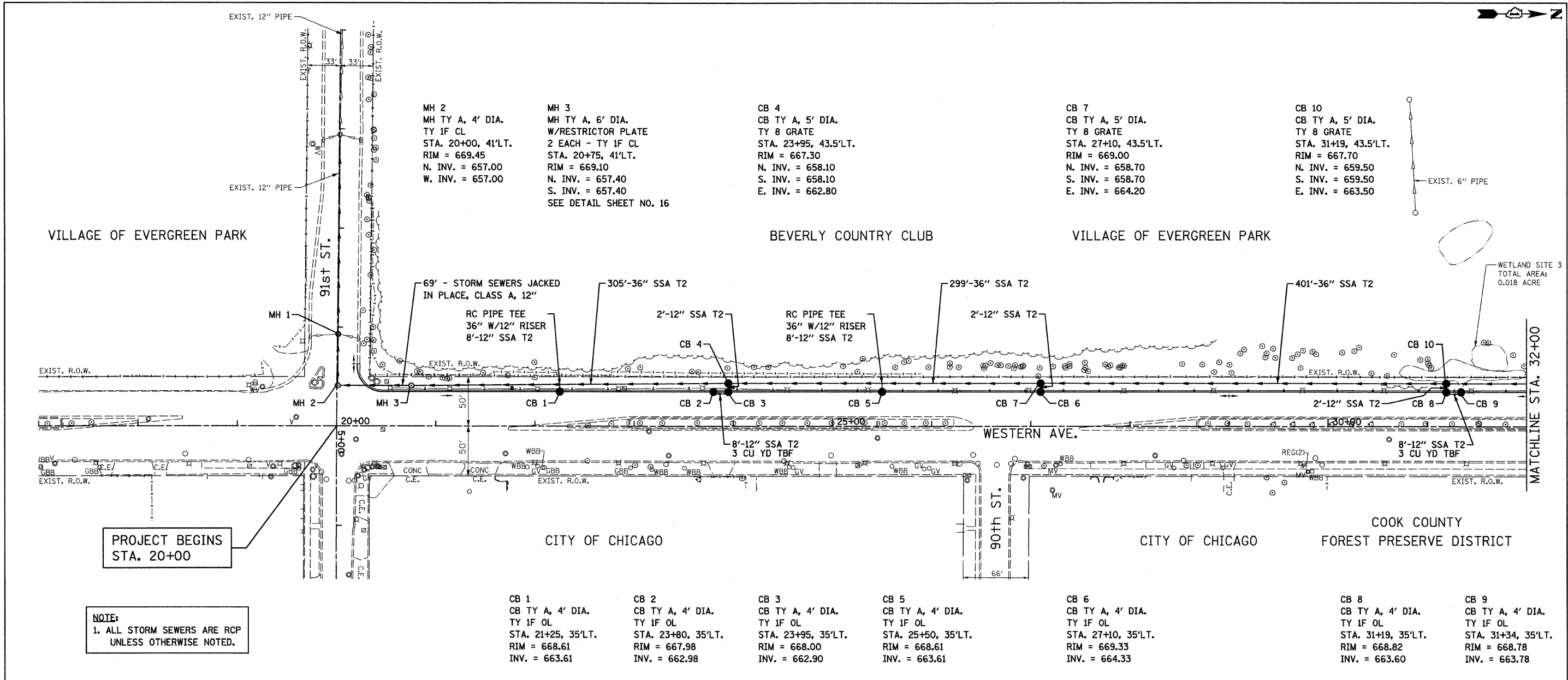
CR
CHRISTIAN-ROGE & ASSOCIATES, INC.
ENGINEERS-PLANNERS-SURVEYORS
211 WEST WACKER DRIVE
CHICAGO, ILLINOIS 60606
PHONE: (312)372-2023 FAX: (312)372-5274

DESIGNED - S.J.P.	REVISED -
DRAWN - A.C.S.	REVISED -
CHECKED - S.J.P.	REVISED -
DATE - MARCH 19, 2010	REVISED -

STATE OF ILLINOIS
DEPARTMENT OF TRANSPORTATION

ROADWAY PLAN & PROFILE
WESTERN AVE.
SCALE: 1" = 50'
SHEET NO. 2 OF 2 SHEETS
STA. 32+00 TO STA. 46+00

F.A.P. RTE. 370	SECTION 2009-015 T	COUNTY COOK	TOTAL SHEETS 20	SHEET NO. 6
CONTRACT NO. 60G15				
FED. ROAD DIST. NO. 1 ILLINOIS FED. AID PROJECT				



PROJECT BEGINS STA. 20+00

NOTE:
1. ALL STORM SEWERS ARE RCP UNLESS OTHERWISE NOTED.

MH 2
MH TY A, 4' DIA.
TY 1F CL
STA. 20+00, 41'LT.
RIM = 669.45
N. INV. = 657.00
W. INV. = 657.00

MH 3
MH TY A, 6' DIA.
W/RESTRICTOR PLATE
2 EACH - TY 1F CL
STA. 20+75, 41'LT.
RIM = 669.10
N. INV. = 657.40
S. INV. = 657.40
SEE DETAIL SHEET NO. 16

CB 4
CB TY A, 5' DIA.
TY 8 GRATE
STA. 23+95, 43.5'LT.
RIM = 667.30
N. INV. = 658.10
S. INV. = 658.10
E. INV. = 662.80

CB 7
CB TY A, 5' DIA.
TY 8 GRATE
STA. 27+10, 43.5'LT.
RIM = 669.00
N. INV. = 658.70
S. INV. = 658.70
E. INV. = 664.20

CB 10
CB TY A, 5' DIA.
TY 8 GRATE
STA. 31+19, 43.5'LT.
RIM = 667.70
N. INV. = 659.50
S. INV. = 659.50
E. INV. = 663.50

CB 1
CB TY A, 4' DIA.
TY 1F OL
STA. 21+25, 35'LT.
RIM = 668.61
INV. = 663.61

CB 2
CB TY A, 4' DIA.
TY 1F OL
STA. 23+80, 35'LT.
RIM = 667.98
INV. = 662.98

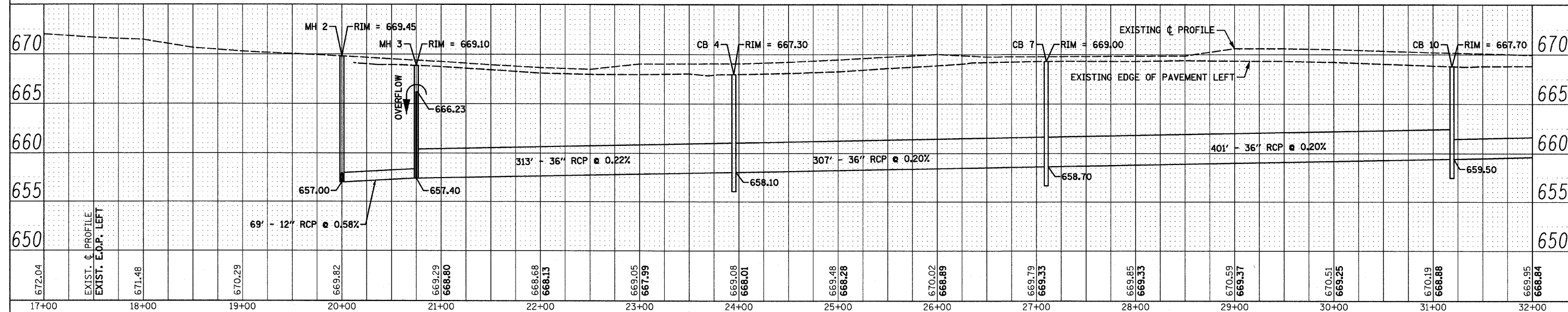
CB 3
CB TY A, 4' DIA.
TY 1F OL
STA. 23+95, 35'LT.
RIM = 668.00
INV. = 662.90

CB 5
CB TY A, 4' DIA.
TY 1F OL
STA. 25+50, 35'LT.
RIM = 668.61
INV. = 663.61

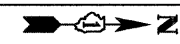
CB 6
CB TY A, 4' DIA.
TY 1F OL
STA. 27+10, 35'LT.
RIM = 669.33
INV. = 664.33

CB 8
CB TY A, 4' DIA.
TY 1F OL
STA. 31+19, 35'LT.
RIM = 668.82
INV. = 663.60

CB 9
CB TY A, 4' DIA.
TY 1F OL
STA. 31+34, 35'LT.
RIM = 668.78
INV. = 663.78



FILE NAME = 0168015-shd-draw.dgn	CHRISTIAN-ROCHE & ASSOCIATES, INC. ENGINEERS-PLANNERS-SURVEYORS 211 WEST WACKER DRIVE CHICAGO, ILLINOIS 60606 PHONE: (312)372-2023 FAX: (312)372-5274	DESIGNED - S.J.P.	REVISED -	STATE OF ILLINOIS DEPARTMENT OF TRANSPORTATION	DRAINAGE AND UTILITY PLAN AND PROFILE WESTERN AVE.			F.A.P. RTE. 370	SECTION 2009-015 T	COUNTY COOK	TOTAL SHEETS 20	SHEET NO. 7	
PLOT DATE = 3/22/2010		DRAWN - A.C.S.	REVISED -		SCALE: 1" = 50'			SHEET NO. 1 OF 4 SHEETS	STA. 20+00	TO STA. 32+00	CONTRACT NO. 60G15		
		CHECKED - S.J.P.	REVISED -								FED. ROAD DIST. NO. 1 ILLINOIS FED. AID PROJECT		
		DATE - MARCH 19, 2010	REVISED -										



CB 12
 CB TY A, 4' DIA.
 TY 8 GRATE
 STA. 34+75, 43.5'L.T.
 RIM = 667.40
 N. INV. = 660.40
 S. INV. = 661.10
 E. INV. = 662.10

CB 15
 CB TY A, 4' DIA.
 TY 8 GRATE
 STA. 37+50, 43.5'L.T.
 RIM = 666.80
 N. INV. = 661.10
 S. INV. = 661.50
 E. INV. = 661.90

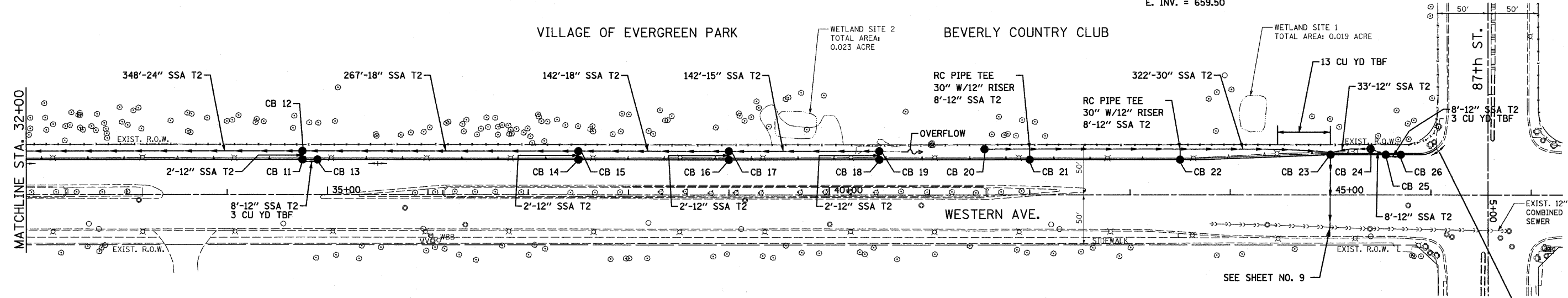
CB 17
 CB TY A, 4' DIA.
 TY 8 GRATE
 STA. 39+00, 43.5'L.T.
 RIM = 666.60
 N. INV. = 661.50
 S. INV. = 661.50
 E. INV. = 661.50

CB 19
 CB TY A, 4' DIA.
 TY 8 GRATE
 STA. 40+50, 43.5'L.T.
 RIM = 666.30
 S. INV. = 662.20
 E. INV. = 662.30

CB 20
 CB TY A, 5' DIA.
 TY 8 GRATE
 STA. 41+55, 45.5'L.T.
 RIM = 665.70
 N. INV. = 660.70

CB 23
 CATCH BASINS, TYPE A, 5' DIA.
 TY 1F OL (CITY OF CHICAGO)
 W/HALF TRAP & 3" VORTEX RESTRICTOR
 STA. 45+00, 40'L.T.
 RIM = 664.57
 N. INV. = 660.50
 S. INV. = 660.00
 E. INV. = 659.50

CB 24
 CB TY A, 4' DIA.
 TY 8 GRATE
 STA. 45+40, 45.8'L.T.
 RIM = 664.90
 N. INV. = 660.90
 S. INV. = 660.50



CB 11
 CB TY A, 4' DIA.
 TY 1F OL
 STA. 34+75, 35'L.T.
 RIM = 667.41
 INV. = 662.20

CB 13
 CB TY A, 4' DIA.
 TY 1F OL
 STA. 34+90, 35'L.T.
 RIM = 667.36
 INV. = 662.36

CB 14
 CB TY A, 4' DIA.
 TY 1F OL
 STA. 37+50, 35'L.T.
 RIM = 667.00
 INV. = 662.00

CB 16
 CB TY A, 4' DIA.
 TY 1F OL
 STA. 39+00, 35'L.T.
 RIM = 666.50
 INV. = 661.60

CB 18
 CB TY A, 4' DIA.
 TY 1F OL
 STA. 40+50, 35'L.T.
 RIM = 666.23
 INV. = 662.40

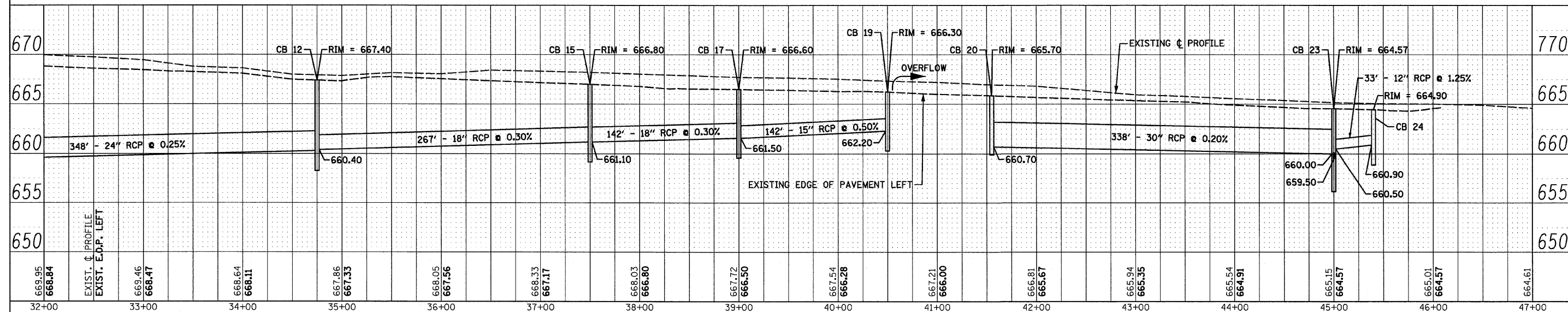
CB 21
 CB TY A, 4' DIA.
 TY 1F OL
 STA. 42+00, 35'L.T.
 RIM = 665.67
 INV. = 662.67

CB 22
 CB TY A, 4' DIA.
 TY 1F OL
 STA. 43+50, 35'L.T.
 RIM = 665.22
 INV. = 662.22

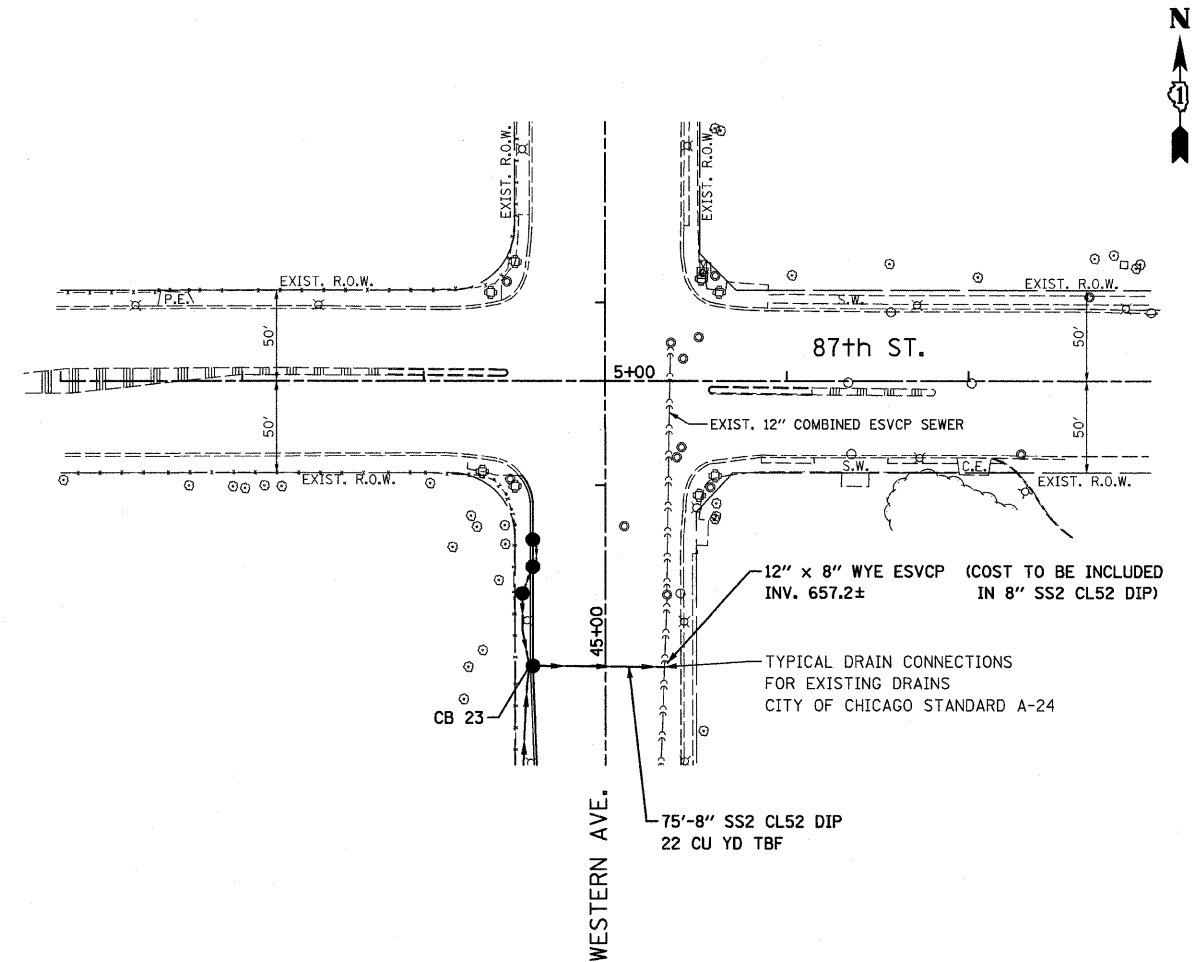
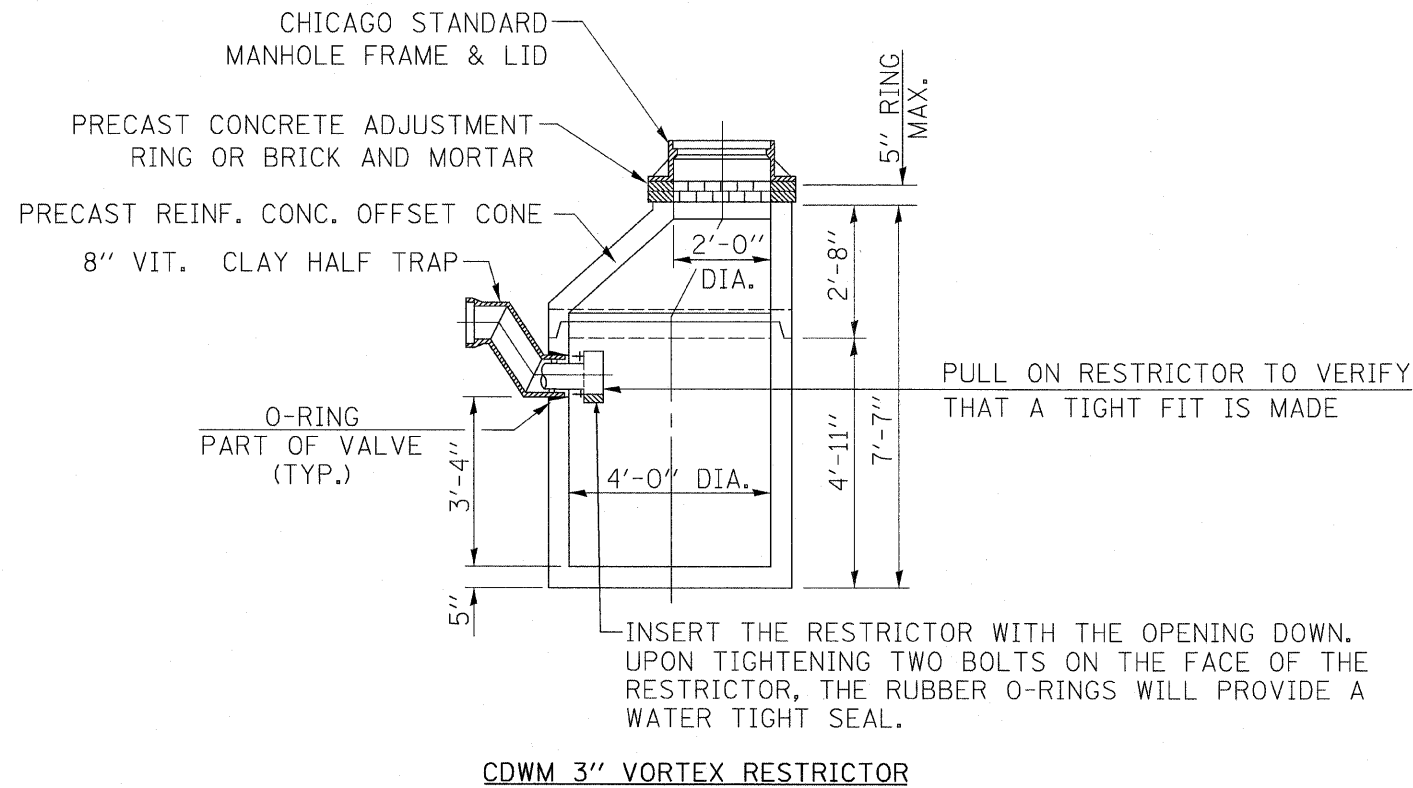
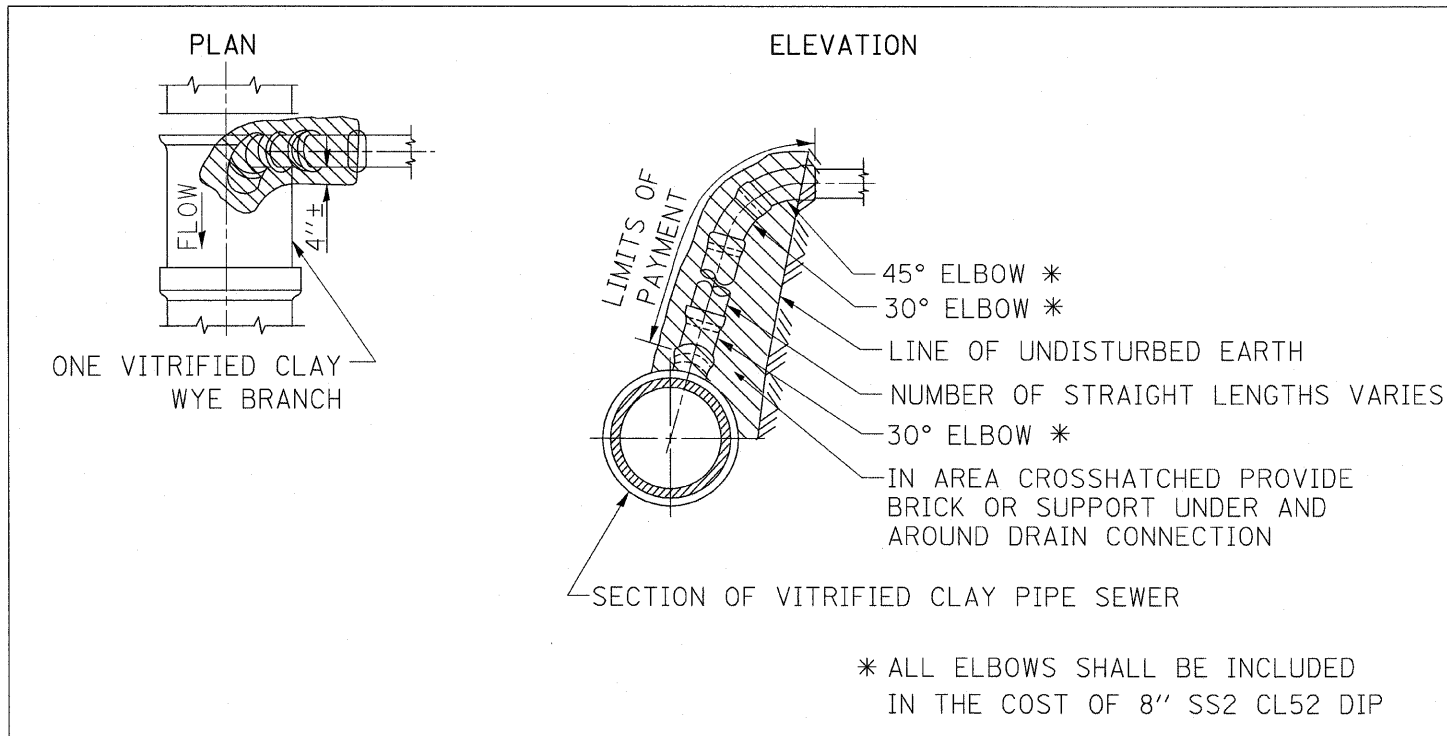
CB 25
 CB TY A, 4' DIA.
 TY 1F OL
 STA. 45+55, 40'L.T.
 RIM = 664.39
 N. INV. = 661.00
 S. INV. = 661.00

CB 26
 CB TY A, 4' DIA.
 TY 1F OL
 STA. 45+70, 40'L.T.
 RIM = 664.34
 INV. = 661.10

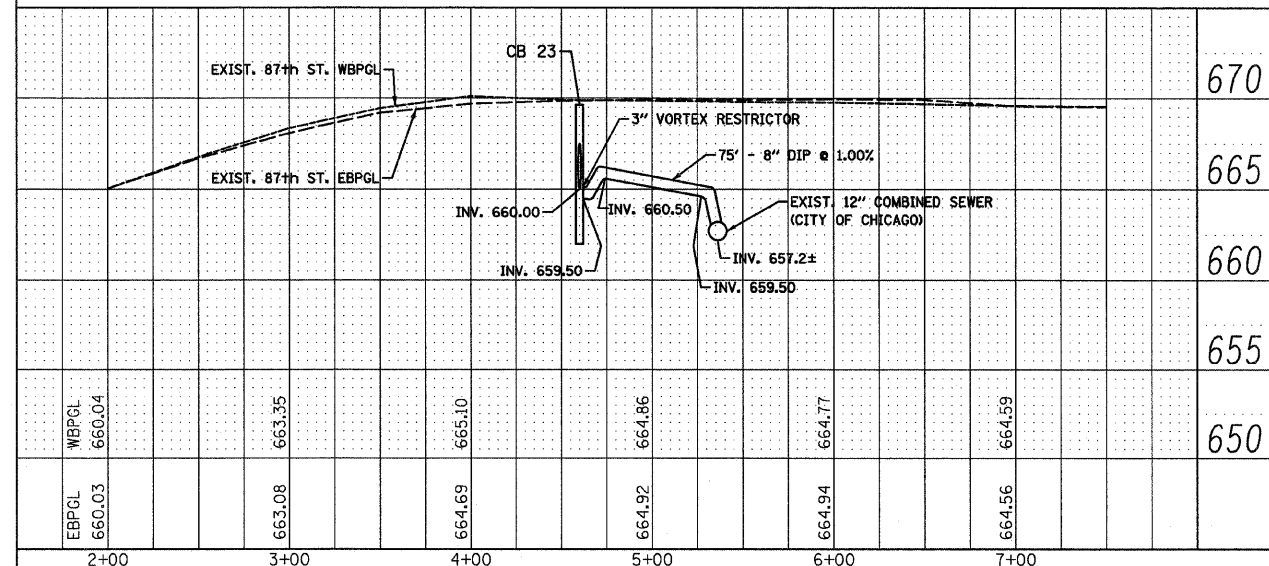
NOTE:
 1. ALL STORM SEWERS ARE RCP UNLESS OTHERWISE NOTED.



FILE NAME = D:\16015-sh-t-dra\2.dgn	CHRISTIAN-ROCHE & ASSOCIATES, INC. ENGINEERS-PLANNERS-SURVEYORS 211 WEST WACKER DRIVE CHICAGO, ILLINOIS 60606 PHONE: (312)372-2023 FAX: (312)372-5274	DESIGNED - S.J.P.	REVISED -	STATE OF ILLINOIS DEPARTMENT OF TRANSPORTATION	DRAINAGE AND UTILITY PLAN AND PROFILE WESTERN AVE.	F.A.P. RTE.	SECTION	COUNTY	TOTAL SHEETS	SHEET NO.
PLOT DATE = 3/22/2010		DRAWN - A.C.S.	REVISED -			370	2009-015 T	COOK	20	8
		CHECKED - S.J.P.	REVISED -			CONTRACT NO. 60G15				
		DATE - MARCH 19, 2010	REVISED -			FED. ROAD DIST. NO. 1 ILLINOIS FED. AID PROJECT				



CB 23
 CATCH BASINS, TYPE A, 5' DIA.
 TY IF OL (CITY OF CHICAGO)
 W/HALF TRAP & 3" VORTEX RESTRICTOR
 STA. 45+00, 40'LT.
 RIM = 664.57
 N. INV. = 660.50
 S. INV. = 660.00
 E. INV. = 659.50



FILE NAME = D160015-shd-drain3.dgn
 PLOT DATE = 3/22/2010

CHRISTIAN-ROGE & ASSOCIATES, INC.
 ENGINEERS-PLANNERS-SURVEYORS
 211 WEST WACKER DRIVE
 CHICAGO, ILLINOIS 60606
 PHONE: (312)372-2023 FAX: (312)372-5274

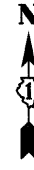
DESIGNED - S.J.P.	REVISED -
DRAWN - A.C.S.	REVISED -
CHECKED - S.J.P.	REVISED -
DATE - MARCH 19, 2010	REVISED -

STATE OF ILLINOIS
DEPARTMENT OF TRANSPORTATION

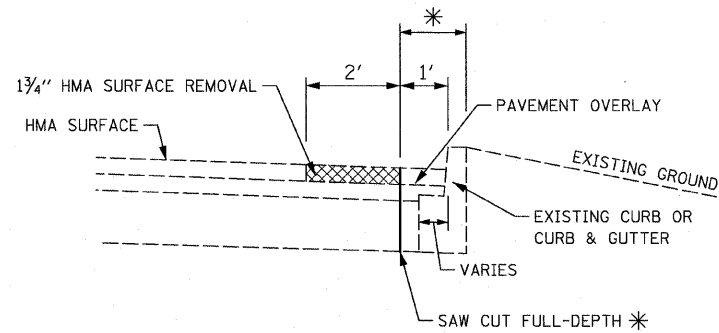
DRAINAGE AND UTILITY PLAN AND PROFILE
WESTERN AVE.

SCALE: 1" = 50' SHEET NO. 3 OF 4 SHEETS STA. 3+00 TO STA. 7+00

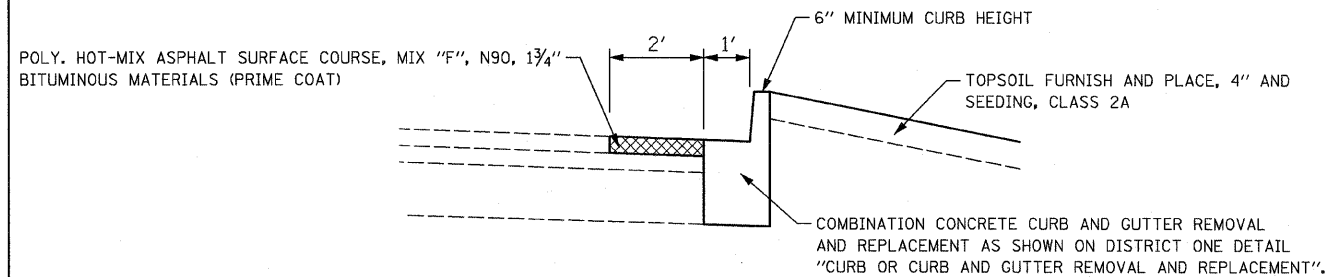
F.A.P. RTE. 370	SECTION 2009-015 T	COUNTY COOK	TOTAL SHEETS 20	SHEET NO. 9
CONTRACT NO. 60G15				
FED. ROAD DIST. NO. 1 ILLINOIS FED. AID PROJECT				



* THE COST OF THE REMOVAL OF THE EXISTING CURB, CURB & GUTTER, PAVEMENT, PAVEMENT OVERLAY, CURB OUTLET (NOT SHOWN) AND FULL-DEPTH SAW CUTS SHALL BE INCLUDED IN THE CONTRACT PRICE FOR "COMBINATION CONCRETE CURB AND GUTTER REMOVAL AND REPLACEMENT".

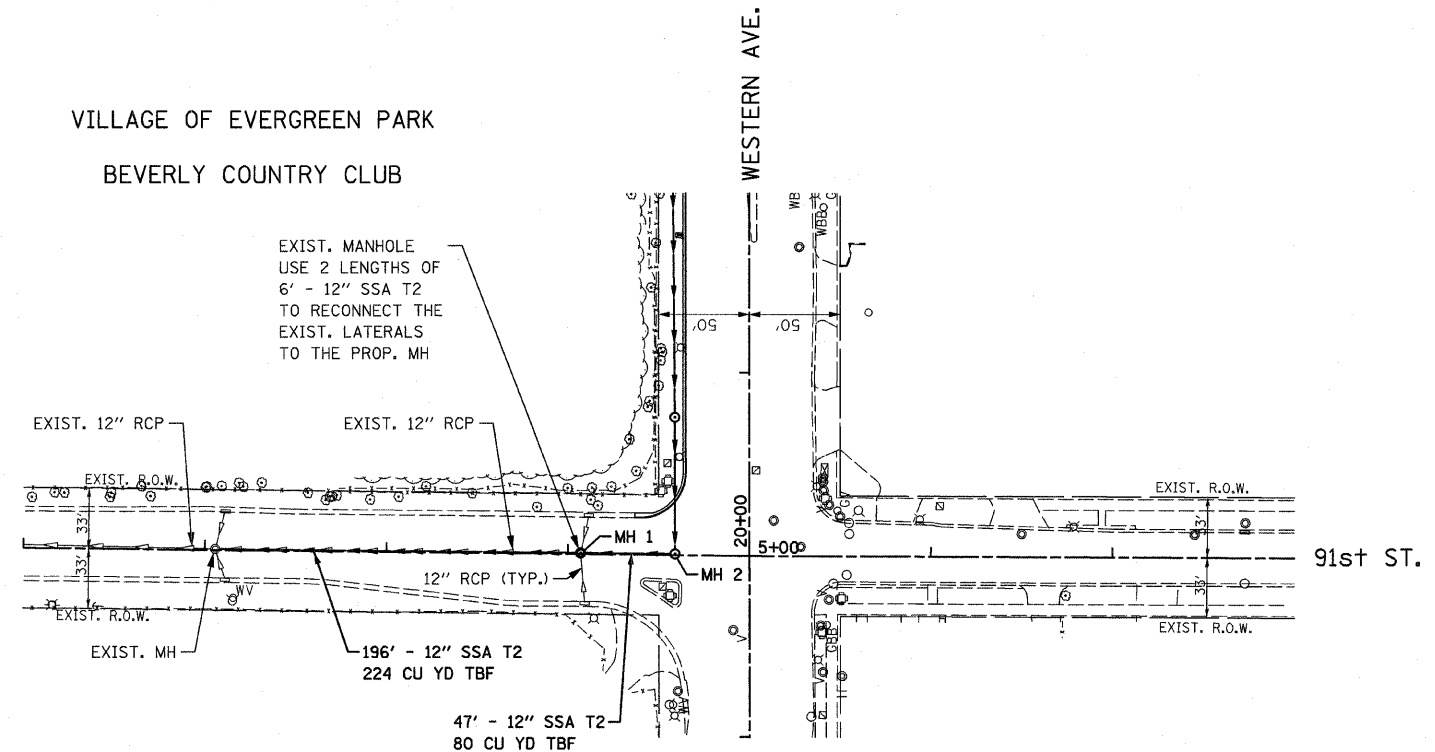


EXISTING CONDITIONS
SECTION THROUGH EXISTING CURB & GUTTER



PROPOSED CONDITIONS
SECTION THROUGH PROPOSED IMPROVEMENT

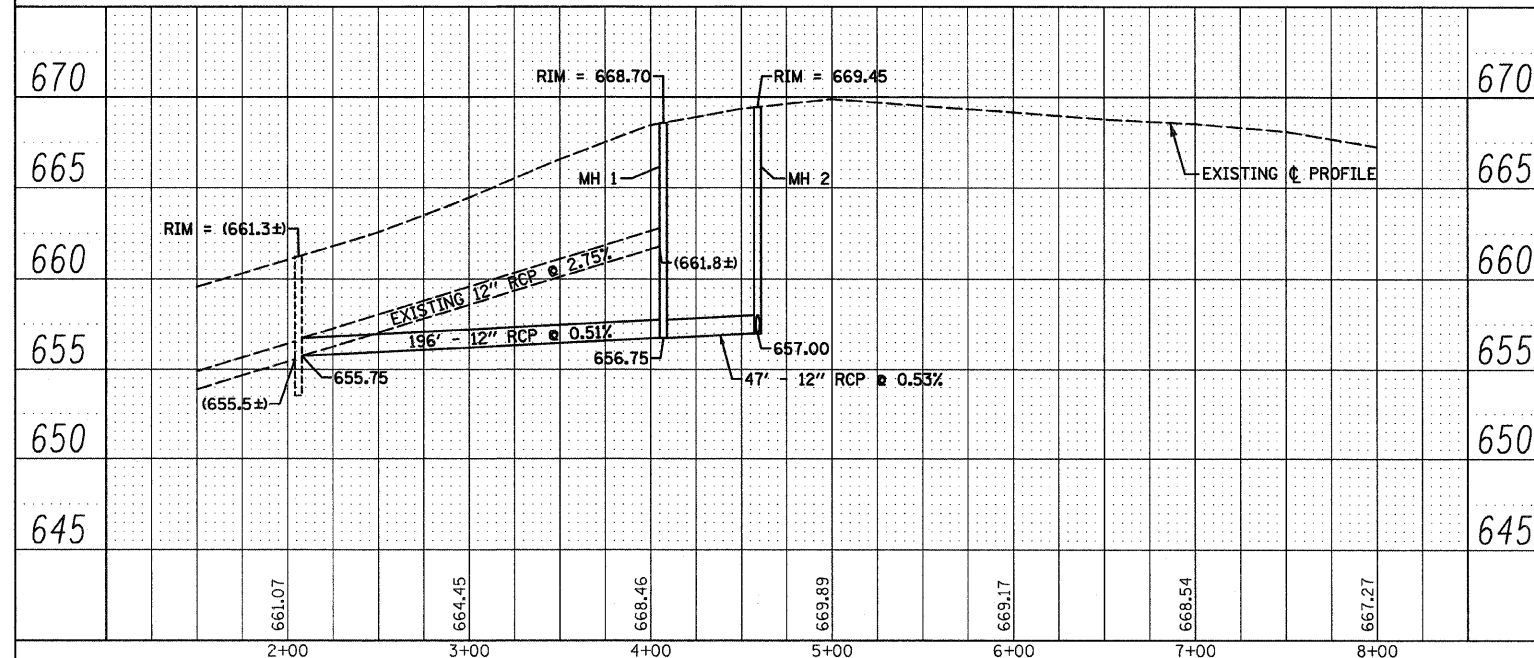
VILLAGE OF EVERGREEN PARK
BEVERLY COUNTRY CLUB



MH 1
MH TY A, 4' DIA.
TY IF CL
STA. 4+07, ϕ
RIM = 668.70
E. INV. = 656.75
W. INV. = 656.75
N. & S. INV. = MEET EXIST. PIPES

MH 2
MH TY A, 4' DIA.
TY IF CL
STA. 4+59, ϕ = STA. 20+00, 41' LT.
RIM = 669.45
N. INV. = 657.00
W. INV. = 657.00

NOTE:
1. ALL STORM SEWERS ARE RCP UNLESS OTHERWISE NOTED.



FILE NAME = D16015-eh-t-drain4.dgn
PLOT DATE = 3/22/2010

CHRISTIAN-ROGE & ASSOCIATES, INC.
ENGINEERS-PLANNERS-SURVEYORS
211 WEST WACKER DRIVE
CHICAGO, ILLINOIS 60606
PHONE: (312)372-2023 FAX: (312)372-5274

DESIGNED - S.J.P.	REVISED -
DRAWN - A.C.S.	REVISED -
CHECKED - S.J.P.	REVISED -
DATE - MARCH 19, 2010	REVISED -

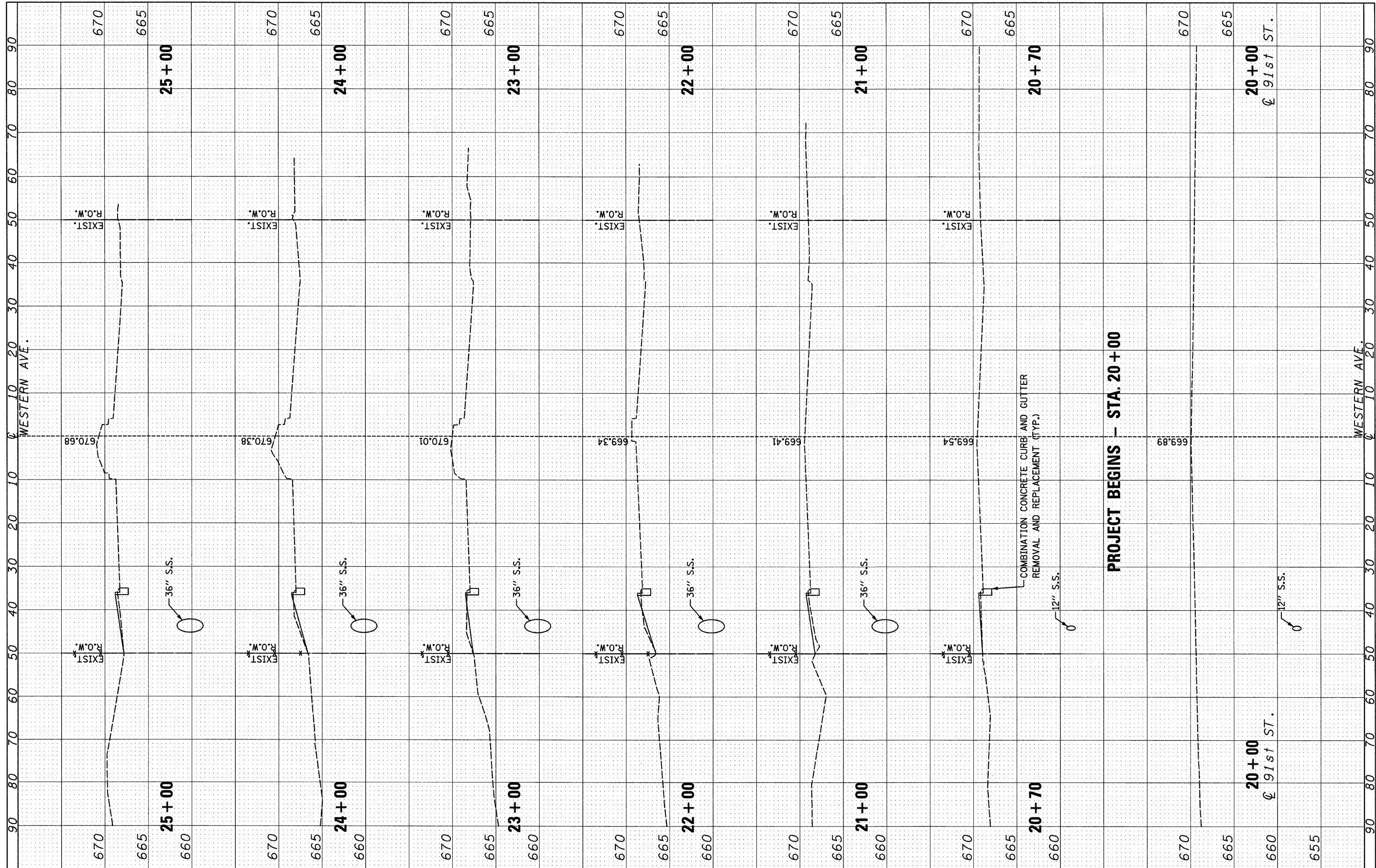
STATE OF ILLINOIS
DEPARTMENT OF TRANSPORTATION

DRAINAGE AND UTILITY PLAN AND PROFILE
91st ST.
SCALE: 1" = 50'
SHEET NO. 4 OF 4 SHEETS
STA. 2+00 TO STA. 8+00

F.A.P. RTE. 370	SECTION 2009-015 T	COUNTY COOK	TOTAL SHEETS 20	SHEET NO. 10
FED. ROAD DIST. NO. 1 ILLINOIS FED. AID PROJECT			CONTRACT NO. 60G15	

FINAL SURVEY NO.	SURVEYED	BY	DATE
	NOTED		
	PLOTTED		
	TEMPLATE		
	AREAS		
	CHECKED		

ORIGINAL SURVEY NO.	SURVEYED	BY	DATE
	NOTED		
	PLOTTED		
	TEMPLATE		
	AREAS		
	CHECKED		



FILE NAME = D160615-shr-xssh.dgn
 PLOT DATE = 3/22/2010

CHRISTIAN-ROGE & ASSOCIATES, INC.
 ENGINEERS-PLANNERS-SURVEYORS
 211 WEST WACKER DRIVE
 CHICAGO, ILLINOIS 60606
 PHONE: (312)372-2023 FAX: (312)372-5274

DESIGNED -	S.J.P.	REVISED -	
DRAWN -	A.C.S.	REVISED -	
CHECKED -	S.J.P.	REVISED -	
DATE -	MARCH 19, 2010	REVISED -	

STATE OF ILLINOIS
DEPARTMENT OF TRANSPORTATION

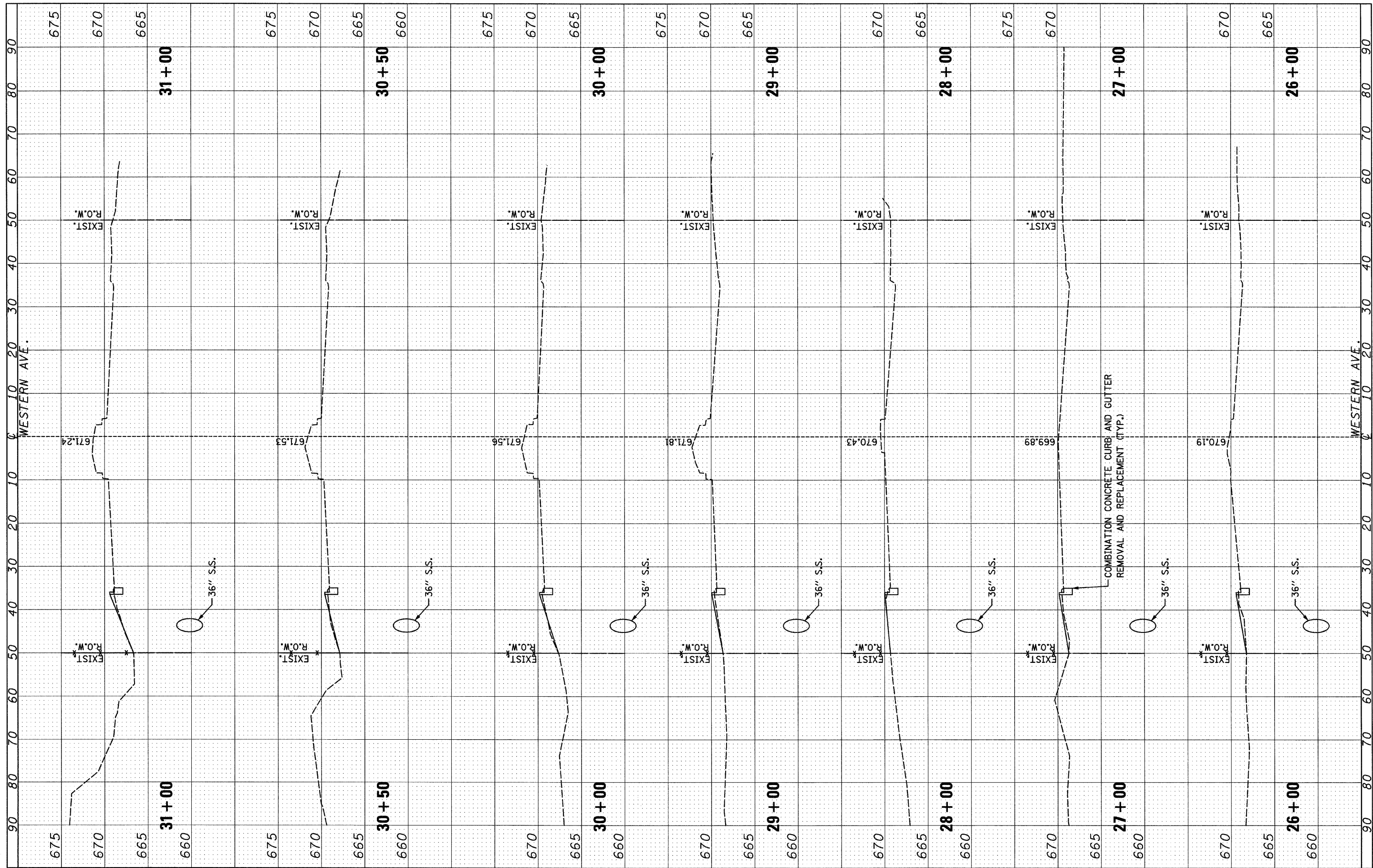
CROSS SECTIONS
WESTERN AVE.

SCALE: NONE SHEET NO. 1 OF 4 SHEETS STA. 20+00 TO STA. 25+00

F.A.P. RTE.	SECTION	COUNTY	TOTAL SHEETS	SHEET NO.
370	2009-015 T	COOK	20	12
CONTRACT NO. 60G15				
FED. ROAD DIST. NO. 1 ILLINOIS FED. AID PROJECT				

FINAL SURVEY NO.	SURVEYED	BY	DATE
	PLOTTED		
	TEMPLATE		
	AREAS		
	CHECKED		

ORIGINAL SURVEY NO.	SURVEYED	BY	DATE
	PLOTTED		
	TEMPLATE		
	AREAS		
	CHECKED		



FILE NAME = D160615-shr-xshd.dgn
 PLOT DATE = 3/22/2018

CHRISTIAN-ROGE & ASSOCIATES, INC.
 ENGINEERS-PLANNERS-SURVEYORS
 211 WEST WACKER DRIVE
 CHICAGO, ILLINOIS 60606
 PHONE: (312)372-2023 FAX: (312)372-5274

DESIGNED -	S.J.P.	REVISED -	
DRAWN -	A.C.S.	REVISED -	
CHECKED -	S.J.P.	REVISED -	
DATE -	MARCH 19, 2010	REVISED -	

**STATE OF ILLINOIS
 DEPARTMENT OF TRANSPORTATION**

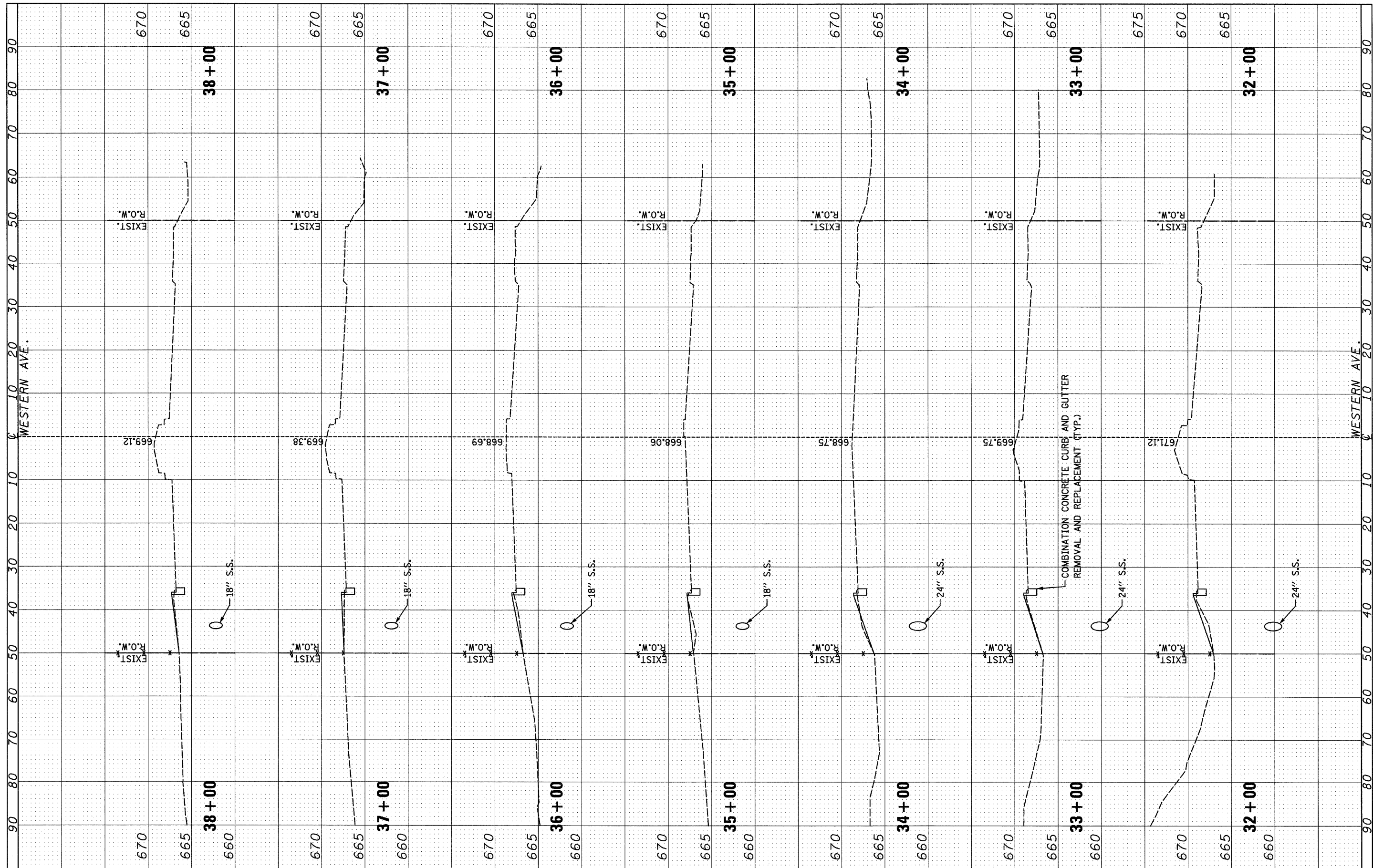
**CROSS SECTIONS
 WESTERN AVE.**

SCALE: NONE SHEET NO. 2 OF 4 SHEETS STA. 26+00 TO STA. 31+00

F.A.P. RTE.	SECTION	COUNTY	TOTAL SHEETS	SHEET NO.
370	2009-015 T	COOK	20	13
CONTRACT NO. 60G15				
FED. ROAD DIST. NO. 1 ILLINOIS FED. AID PROJECT				

FINAL SURVEY	SURVEYED	BY	DATE
NOTE BOOK	PLOTTED		
	TEMPLATE		
	AREAS		
	CHECKED		

ORIGINAL SURVEY	SURVEYED	BY	DATE
NOTE BOOK	PLOTTED		
	TEMPLATE		
	AREAS		
	CHECKED		



FILE NAME = 0168015-shr-xssht.dgn
 PLOT DATE = 3/22/2010

CHRISTIAN-ROGE & ASSOCIATES, INC.
 ENGINEERS-PLANNERS-SURVEYORS
 211 WEST WACKER DRIVE
 CHICAGO, ILLINOIS 60606
 PHONE: (312)372-2023 FAX: (312)372-5274

DESIGNED - S.J.P.	REVISED -
DRAWN - A.C.S.	REVISED -
CHECKED - S.J.P.	REVISED -
DATE - MARCH 19, 2010	REVISED -

**STATE OF ILLINOIS
 DEPARTMENT OF TRANSPORTATION**

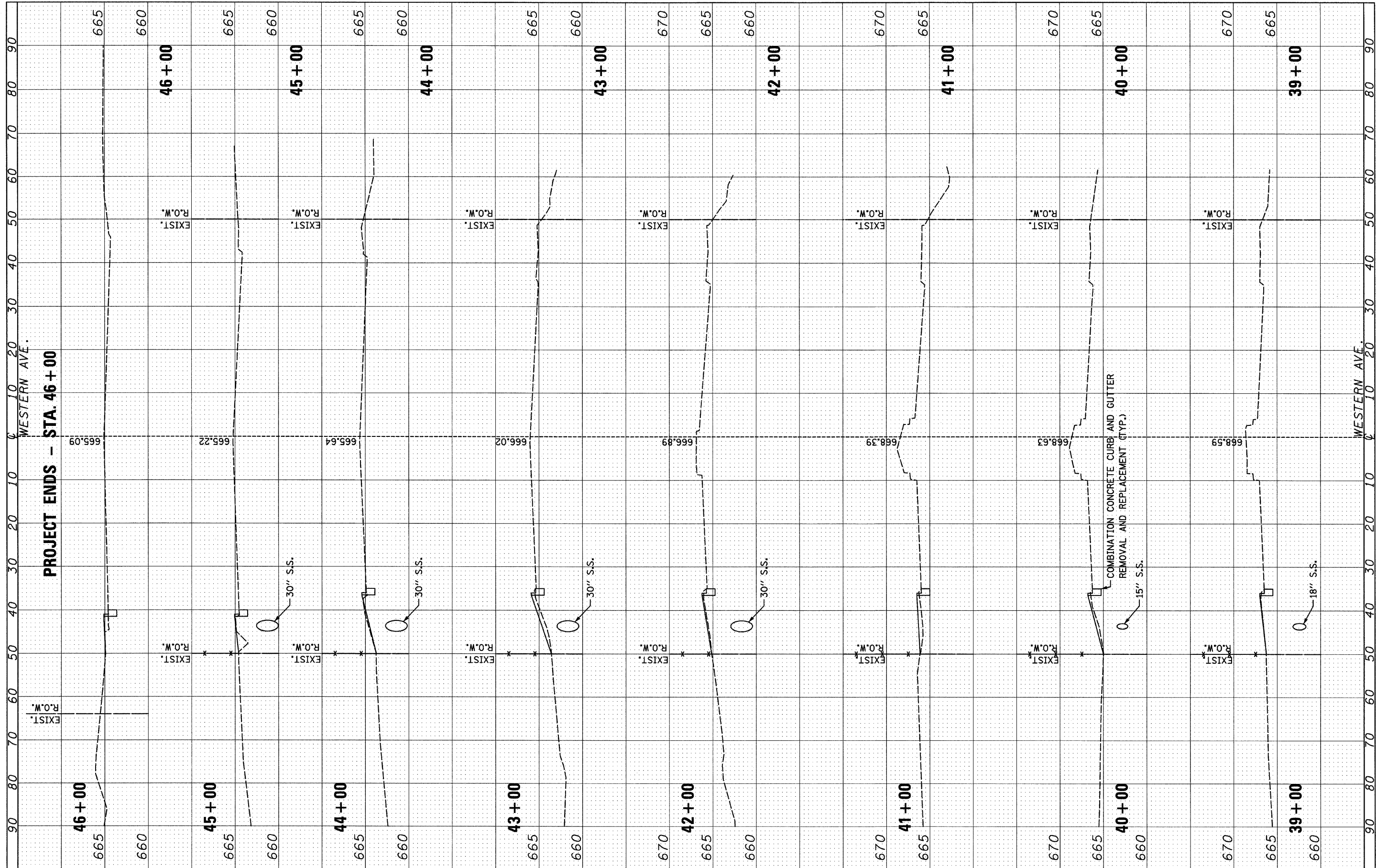
**CROSS SECTIONS
 WESTERN AVE.**

SCALE: NONE SHEET NO. 3 OF 4 SHEETS STA. 32+00 TO STA. 38+00

F.A.P. RTE.	SECTION	COUNTY	TOTAL SHEETS	SHEET NO.
370	2009-015 T	COOK	20	14
CONTRACT NO. 60G15				
FED. ROAD DIST. NO. 1 ILLINOIS FED. AID PROJECT				

FINAL SURVEY	SURVEYED	BY	DATE
NOTE BOOK	PLOTTED		
	TEMPLATE		
	AREAS		
	CHECKED		

ORIGINAL SURVEY	SURVEYED	BY	DATE
NOTE BOOK	PLOTTED		
	TEMPLATE		
	AREAS		
	CHECKED		



FILE NAME = D168015-shr-xsh.txdgn
 PLOT DATE = 3/22/2010

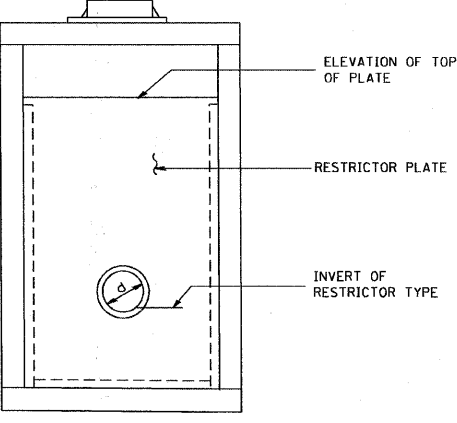
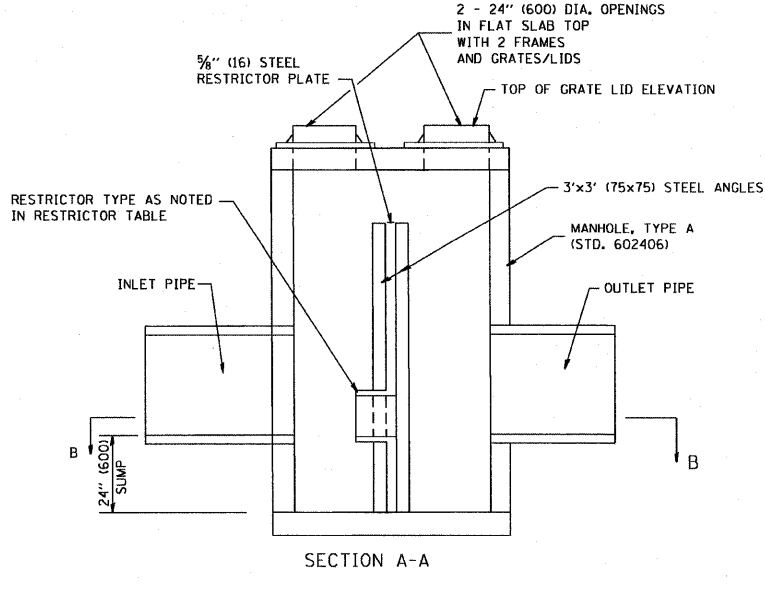
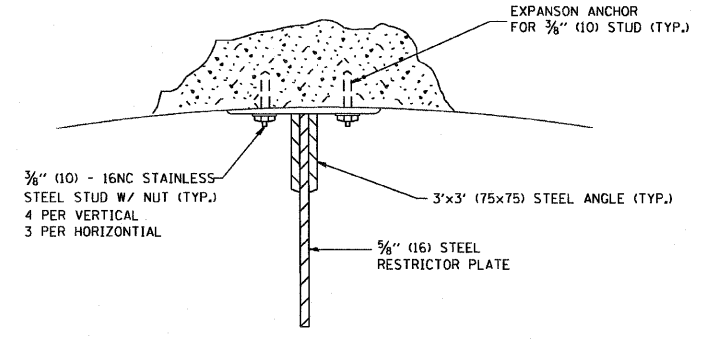
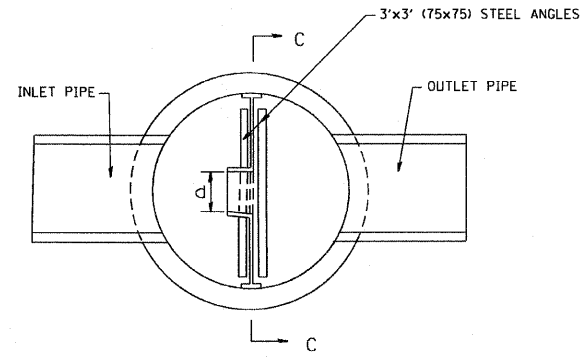
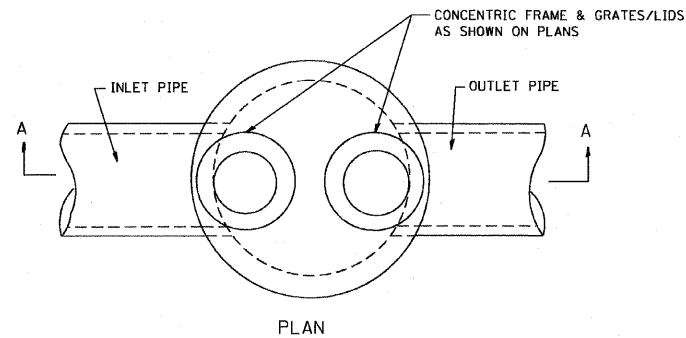
CHRISTIAN-ROGE & ASSOCIATES, INC.
 ENGINEERS-PLANNERS-SURVEYORS
 211 WEST WACKER DRIVE
 CHICAGO, ILLINOIS 60606
 PHONE: (312)372-2023 FAX: (312)372-5274

DESIGNED - S.J.P.	REVISED -
DRAWN - A.C.S.	REVISED -
CHECKED - S.J.P.	REVISED -
DATE - MARCH 19, 2010	REVISED -

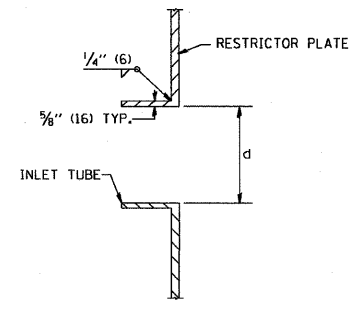
STATE OF ILLINOIS
DEPARTMENT OF TRANSPORTATION

CROSS SECTIONS
WESTERN AVE.
 SCALE: NONE SHEET NO. 4 OF 4 SHEETS STA. 39+00 TO STA. 46+00

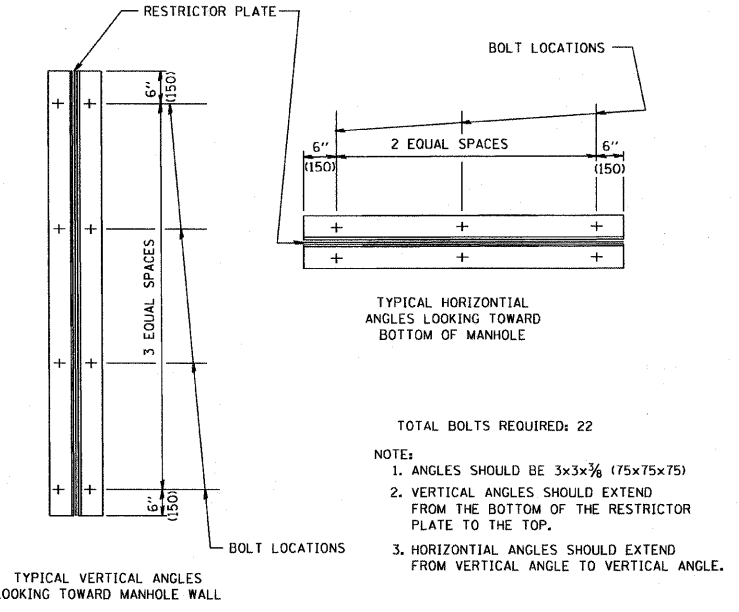
F.A.P. RTE.	SECTION	COUNTY	TOTAL SHEETS	SHEET NO.
370	2009-015 T	COOK	20	15
CONTRACT NO. 60G15			FED. ROAD DIST. NO. 1 (ILLINOIS) FED. AID PROJECT	



- NOTES:
1. ALL STEEL ANGLES AND PLATES TO BE GALVANIZED AFTER FABRICATION.
 2. ALL RESTRICTOR PLATES, ANGLES AND HARDWARE TO BE INCLUDED IN THE COST OF THE MANHOLE.
 3. BASIS OF PAYMENT: "MANHOLES, TYPE A, 6 FT. (1.8 m)-DIAMETER, TYPE 1, FRAME, CLOSED LID, RESTRICTOR PLATE" EACH



STATION	MANHOLE DIAMETER	FRAME AND GRATE	RESTRICTOR TYPE	INSIDE RESTRICTOR TYPE DIAMETER in. (mm) (d)	INVERT OF RESTRICTOR TYPE	ELEVATION OF TOP OF PLATE OVERFLOW
20+75, LT.	6' DIA.	2 EACH - TYPE 1 FRAME, CLOSED LID	2	5"	657.40	666.23



RESTRICTOR TYPE					
1	2	3	4	5	6
RE-ENTRANT TUBE	SHARP EDGED	SQUARE EDGED	RE-ENTRANT TUBE	SQUARE EDGED	ROUNDED
LENGTH: 1/2 TO 1 DIA. C=.52	C=.61	STREAM CLEARS SIDES C=.61	LENGTH: 2-1/2 DIA. C=.73	LENGTH: 1-1/2 DIA. C=.82	C=.98

VALUES OF "C" FOR CIRCULAR AND SQUARE ORIFICES

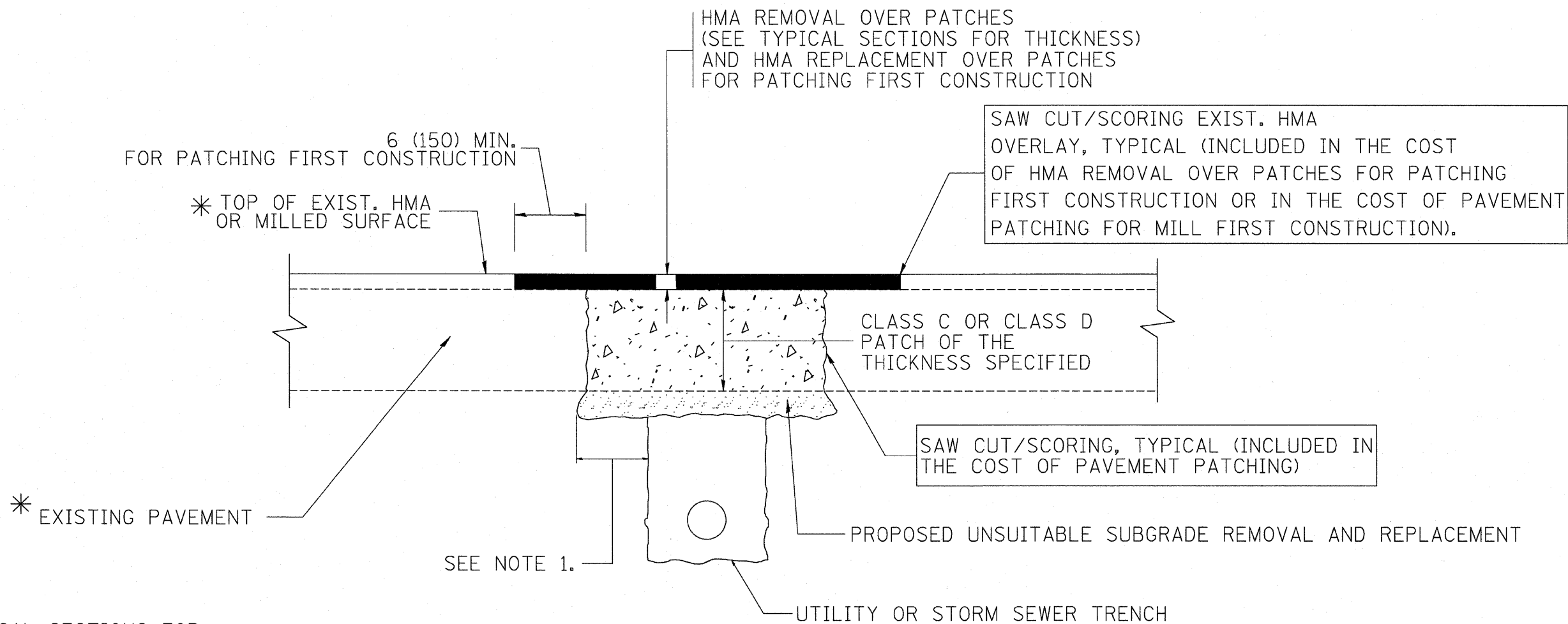
- TOTAL BOLTS REQUIRED: 22
- NOTE:
1. ANGLES SHOULD BE 3x3x3/8 (75x75x75)
 2. VERTICAL ANGLES SHOULD EXTEND FROM THE BOTTOM OF THE RESTRICTOR PLATE TO THE TOP.
 3. HORIZONTAL ANGLES SHOULD EXTEND FROM VERTICAL ANGLE TO VERTICAL ANGLE.

FILE NAME = W:\diststd\22x34\bd12.dgn	USER NAME = goglianobt	DESIGNED - R. SHAH	REVISED - R. SHAH 10-25-94
		DRAWN -	REVISED - E. GOMEZ 08-28-00
	PLOT SCALE = 50.000" / IN.	CHECKED -	REVISED - M. GOMEZ 01-08-01
	PLOT DATE = 1/4/2008	DATE - 09-09-94	REVISED -

STATE OF ILLINOIS
DEPARTMENT OF TRANSPORTATION

MANHOLE WITH RESTRICTOR PLATE		F&P. RTE. 370	SECTION 2009-015 T	COUNTY COOK	TOTAL SHEETS 20	SHEET NO. 16
SCALE: NONE	SHEET NO. 1 OF 1 SHEETS	STA. 20+00	TO STA. 46+00	CONTRACT NO. 60G15		
FED. ROAD DIST. NO. 1 ILLINOIS FED. AID PROJECT						

ALL DIMENSIONS ARE IN INCHES (MILLIMETERS) UNLESS OTHERWISE SHOWN.



* SEE TYPICAL SECTIONS FOR THICKNESS AND MATERIALS

NOTES:

1. THE WIDTH OF THE FULL DEPTH PATCH OVER A TRENCH SHALL BE 12 (300) WIDER ON EACH SIDE OF THE TRENCH.
2. FOR METHOD OF MEASUREMENT AND BASIS OF PAYMENT, SEE RECURRING SPECIAL PROVISION "PATCHING WITH HOT-MIX ASPHALT OVERLAY REMOVAL".

SEQUENCE OF CONSTRUCTION (PATCHING FIRST)

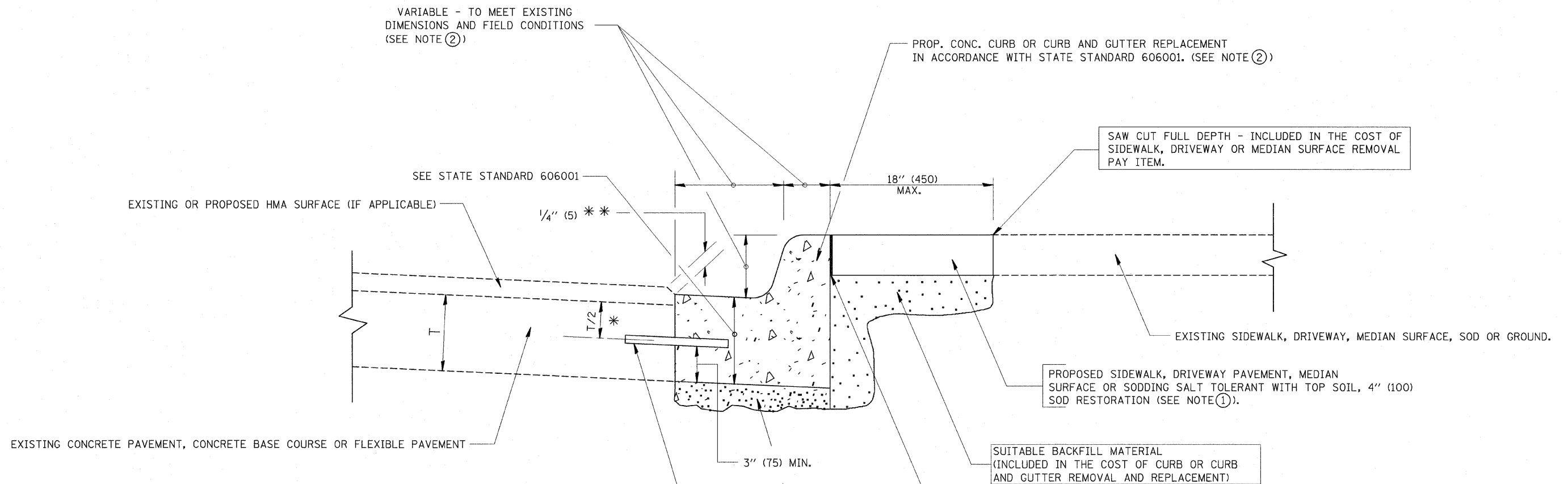
1. REMOVE THE EXISTING HMA MATERIAL OVER THE AREA TO BE PATCHED.
2. REMOVE AND REPLACE WITH CLASS C OR D PATCH.
3. REPLACE HMA MATERIAL OVER THE AREA TO BE PATCHED.

SEQUENCE OF CONSTRUCTION (MILLING FIRST)

1. MILL HMA FIRST IF THERE IS AT LEAST 4 1/2 INCHES OR MORE OF HMA MATERIAL ON TOP OF THE EXISTING PAVEMENT OR IF THE PAVEMENT IS FULL DEPTH HMA. A MINIMUM OF 2 INCHES OF HMA MATERIAL SHALL BE IN PLACE AFTER MILLING.
2. REMOVE AND REPLACE WITH FULL DEPTH CLASS D PATCHES TO TOP OF MILLED SURFACE.

ALL DIMENSIONS ARE IN INCHES (MILLIMETERS) UNLESS OTHERWISE SHOWN.

FILE NAME = c:\projects\distd22x34\bd22.dgn	USER NAME = bauerdl	DESIGNED - R. SHAH	REVISED - A. ABBAS 04-27-98	STATE OF ILLINOIS DEPARTMENT OF TRANSPORTATION	PAVEMENT PATCHING FOR HMA SURFACED PAVEMENT	F.A.P. RTE. 370	SECTION 2009-015 T	COUNTY COOK	TOTAL SHEETS 20	SHEET NO. 17	
	PLOT SCALE = 50.000' / IN.	CHECKED -	REVISED - R. BORO 01-01-07			BD400-04 (BD-22)		CONTRACT NO. 60G15			
	PLOT DATE = 10/27/2008	DATE - 10-25-94	REVISED - R. BORO 09-04-07			SCALE: NONE		SHEET NO. 1 OF 1 SHEETS		STA. 20+00 TO STA. 46+00	
			REVISED - K. ENG 10-27-08			FED. ROAD DIST. NO. 1 ILLINOIS FED. AID PROJECT					



* 3" (75) MINIMUM FROM TOP AND BOTTOM OF THE CONCRETE PAVEMENT OR BASE COURSE.

** IF THE FINAL SURFACE OF THE PAVEMENT IS CONCRETE, THE GUTTER IS TO BE FLUSH WITH THE PAVEMENT.

NOTE: ① SIDEWALK, DRIVEWAY PAVEMENT OR MEDIAN SURFACE SHALL BE SIMILAR TO THE MATERIAL BEING REMOVED AND WILL BE PAID FOR SEPARATELY.

SODDING, SALT TOLERANT AND TOP SOIL, FURNISH AND PLACE 4" WILL BE PAID FOR SEPARATELY,

- ② FERTILIZER FOR THE PLACEMENT OF THE SOD IS NOT REQUIRED
- ③ CURB OR CURB AND GUTTER REPLACEMENT SHALL MATCH THE SHAPE OF THE EXISTING CURB OR CURB AND GUTTER UNLESS OTHERWISE SPECIFIED.
- ④ FOR CURB OR CURB AND GUTTER REMOVAL AND REPLACEMENT ADJACENT TO FLEXIBLE PAVEMENT DELETE EPOXY COATED TIE BARS.
- ⑤ LONGITUDINAL BARS, IF ENCOUNTERED IN THE EXISTING CURB OR CURB AND GUTTER, ARE NOT TO BE REPLACED. CUTTING AND REMOVING LONGITUDINAL BARS SHALL BE INCLUDED IN THE COST OF CURB OR CURB AND GUTTER REMOVAL AND REPLACEMENT.
- ⑥ THE COST OF HMA SURFACE REMOVAL IN THE EXISTING GUTTER FLAG SHALL BE INCLUDED IN THE COST OF THE CURB AND GUTTER REMOVAL AND REPLACEMENT.
- ⑦ THE REMOVAL AND REPLACEMENT OF THE EXISTING CURB OR CURB AND GUTTER SHALL BE DONE IN ACCORDANCE WITH THE APPLICABLE PORTIONS OF SECTION 440 AND 606 OF THE STANDARD SPECIFICATIONS.
- ⑧ THE LOCATIONS OF REMOVAL AND REPLACEMENT OF EXISTING CURB OR CURB AND GUTTER SHALL BE DETERMINED BY THE RESIDENT ENGINEER AT THE TIME OF CONSTRUCTION.

PROP. CONC. CURB OR CURB AND GUTTER REPLACEMENT IN ACCORDANCE WITH STATE STANDARD 606001. (SEE NOTE ②)

SAW CUT FULL DEPTH - INCLUDED IN THE COST OF SIDEWALK, DRIVEWAY OR MEDIAN SURFACE REMOVAL PAY ITEM.

EXISTING SIDEWALK, DRIVEWAY, MEDIAN SURFACE, SOD OR GROUND.

PROPOSED SIDEWALK, DRIVEWAY PAVEMENT, MEDIAN SURFACE OR SODDING SALT TOLERANT WITH TOP SOIL, 4" (100) SOD RESTORATION (SEE NOTE ①).

SUITABLE BACKFILL MATERIAL (INCLUDED IN THE COST OF CURB OR CURB AND GUTTER REMOVAL AND REPLACEMENT)

PROPOSED 3/4" (20) PREFORMED EXPANSION JOINT AT CONCRETE SIDEWALKS, DRIVEWAYS, AND MEDIANS. (INCLUDED IN THE COST OF CURB OR CURB AND GUTTER REMOVAL AND REPLACEMENT.)

UNSUITABLE SUB-BASE MATERIAL TO BE REMOVED, IF DIRECTED BY THE ENGINEER, SHALL BE REPLACED WITH EITHER SUB-BASE GRANULAR MATERIAL, TYPE B OR ADDITIONAL THICKNESS OF CONCRETE.

REMOVAL AND REPLACEMENT 4" (100) OR LESS IS INCLUDED IN THE COST OF CURB OR CURB AND GUTTER REMOVAL AND REPLACEMENT.

REMOVAL AND REPLACEMENT IN EXCESS OF 4" (100) WILL BE PAID FOR IN ACCORDANCE WITH ARTICLE 109.04 OF THE STANDARD SPECIFICATIONS.

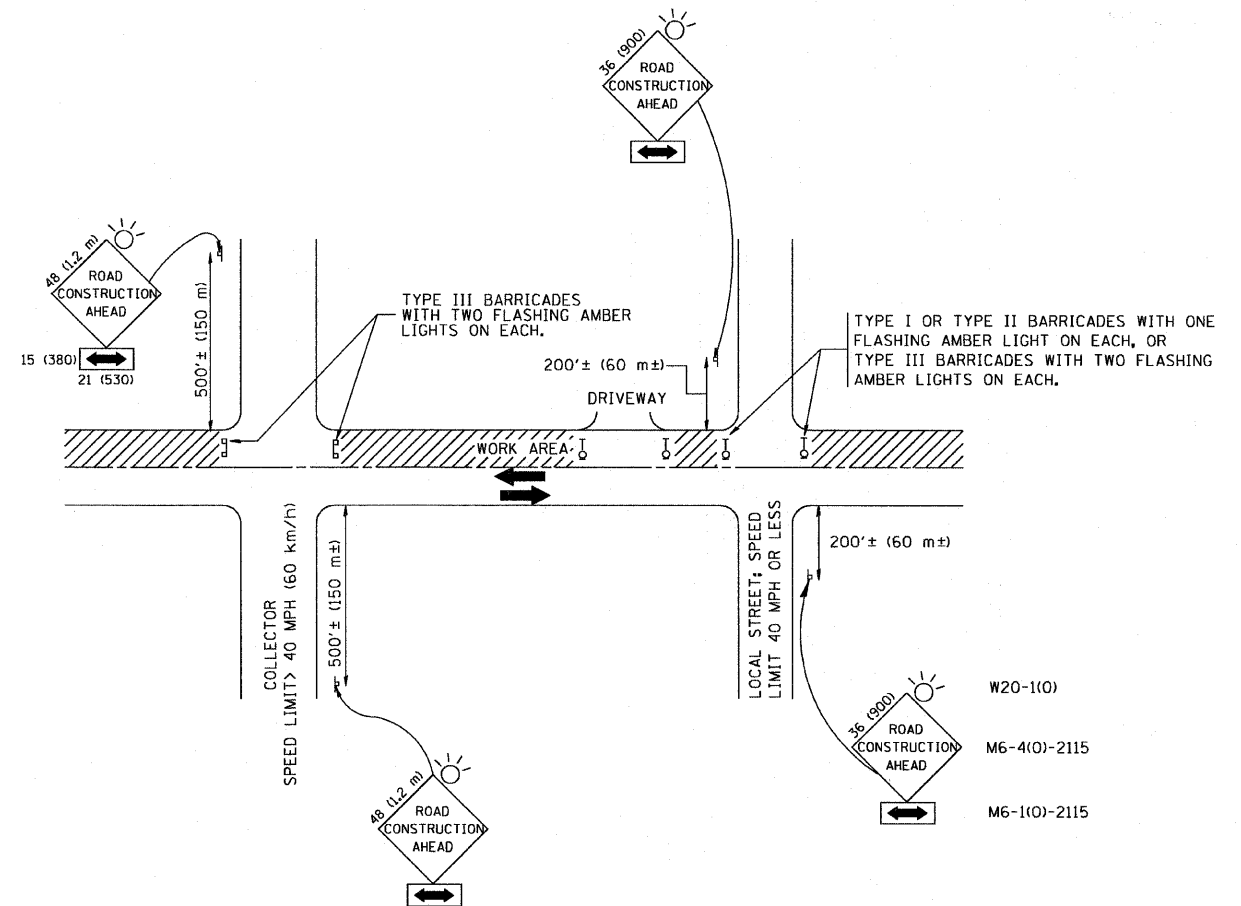
PROPOSED #6 (20) EPOXY COATED TIE BARS 24" (600) LONG AT 24" (600) CENTERS WILL NOT BE PAID FOR SEPARATELY. DELETE EPOXY COATED TIE BARS IF EXISTING TIE BARS ARE USUABLE AS DETERMINED BY THE ENGINEER. (SEE NOTE ③).

BASIS OF PAYMENT:
 THIS WORK WILL BE PAID FOR AT THE CONTRACT UNIT PRICE PER FOOT (METER) FOR "CURB REMOVAL AND REPLACEMENT" OR "COMBINATION CONCRETE CURB AND GUTTER REMOVAL AND REPLACEMENT".

CURB OR CURB AND GUTTER REMOVAL AND REPLACEMENT

ALL DIMENSIONS ARE IN INCHES (MILLIMETERS) UNLESS OTHERWISE SHOWN.

FILE NAME =	USER NAME = drivakosgn	DESIGNED - A. HOUSEH	REVISED - R. SHAH 10-03-96	STATE OF ILLINOIS DEPARTMENT OF TRANSPORTATION	CURB OR CURB AND GUTTER REMOVAL AND REPLACEMENT	F.A.P. RTE.	SECTION	COUNTY	TOTAL SHEETS	SHEET NO.
01\pw_work\pw\dot\drivakosgn\d0108315\bd24.dgn		DRAWN -	REVISED - A. ABBAS 03-21-97			370	2009-015-T	COOK	20	18
PLOT SCALE = 50.0000' / IN.		CHECKED -	REVISED - M. GOMEZ 01-22-01			BD600-06 (BD-24)		CONTRACT NO. 60G15		
PLOT DATE = 12/15/2009		DATE - 03-11-94	REVISED - R. BORO 12-15-09			SCALE: NONE	SHEET NO. 1 OF 1 SHEETS	STA. 20+00	TO STA. 46+00	FED. ROAD DIST. NO. 1 ILLINOIS FED. AID PROJECT



TRAFFIC CONTROL AND PROTECTION FOR SIDE ROADS, INTERSECTIONS, AND DRIVEWAYS

NOTES:

A. FOR NO LANE RESTRICTION ON THE SIDE ROAD OR DRIVEWAYS

1. SIDE ROAD WITH A SPEED LIMIT OF 40 MPH (60 km/h) OR LESS AS SHOWN ON THE DRAWING AND AS DIRECTED BY THE ENGINEER:
 - a) ONE ROAD CONSTRUCTION AHEAD SIGN 36 x 36 (900x900) WITH A FLASHER AND FLAG MOUNTED ON IT APPROXIMATELY 200' (60 m) IN ADVANCE OF THE MAIN ROUTE.
 - b) THE CLOSED PORTION OF THE MAIN ROUTE SHALL BE PROTECTED BY BLOCKING WITH TYPE I, TYPE II OR TYPE III BARRICADES, 1/3 OF THE CROSS SECTION OF THE CLOSED PORTION.
2. SIDE ROAD WITH A SPEED LIMIT GREATER THAN 40 MPH (60 km/h) AS SHOWN ON THE DRAWING AND AS DIRECTED BY THE ENGINEER:
 - a) ONE ROAD CONSTRUCTION AHEAD SIGN 48 x 48 (1.2 m x 1.2 m) WITH A FLASHER MOUNTED ON IT APPROXIMATELY 500' (150 m) IN ADVANCE OF THE MAIN ROUTE.
 - b) THE CLOSED PORTION OF THE MAIN ROUTE SHALL BE PROTECTED BY BLOCKING WITH TYPE III BARRICADES, 1/2 OF THE CROSS SECTION OF THE CLOSED PORTION.
3. WHEN THE SIDE ROAD LIES BETWEEN THE BEGINNING OF THE MAINLINE SIGNING AND THE WORK ZONE, A SINGLE HEADED ARROW (M6-1) SHALL BE USED IN LIEU OF THE DOUBLE HEADED ARROW (M6-4).

B. FOR A LANE CLOSURE ON A SIDE ROAD OR DRIVEWAY:

- USE APPLICABLE PORTIONS OF THE TYPICAL APPLICATION OF TRAFFIC CONTROL DEVICES (STD. 701501, STD. 701606 OR THE APPROPRIATE STANDARD). THE SPACING OF SIGNS AND BARRICADES SHALL BE ADJUSTED FOR FIELD CONDITIONS AS DIRECTED BY THE ENGINEER. THE DIRECTIONAL ARROW SHALL BE COVERED OR REMOVED WHEN NO LONGER CONSISTENT WITH THE SIDE ROAD LANE CLOSURE.
- C. ADVANCE WARNING SIGNS ARE TO BE OMITTED ON DRIVEWAY UNLESS OTHERWISE NOTED.
- D. THE TRAFFIC CONTROL AND PROTECTION FOR SIDE ROADS, INTERSECTIONS, AND DRIVEWAYS SHALL BE INCIDENTAL TO THE COST OF SPECIFIED TRAFFIC CONTROL STANDARDS OR ITEMS.

All dimensions are in millimeters (inches) unless otherwise shown.

FILE NAME =	USER NAME = geglencbt	DESIGNED - LHA	REVISED - J. OBERLE 10-18-95
W:\distatd\22x34\to10.dgn		DRAWN -	REVISED - A. HOUSEH 03-06-96
	PLOT SCALE = 50.000 / IN.	CHECKED -	REVISED - A. HOUSEH 10-15-96
	PLOT DATE = 1/4/2008	DATE - 06-89	REVISED - T. RAMMACHER 01-06-00

STATE OF ILLINOIS
DEPARTMENT OF TRANSPORTATION

TRAFFIC CONTROL AND PROTECTION FOR SIDE ROADS, INTERSECTIONS, AND DRIVEWAYS			
SCALE: NONE	SHEET NO. 1 OF 1 SHEETS	STA. 20+00	TO STA. 46+00

F.A.P. RTE	SECTION	COUNTY	TOTAL SHEETS	SHEET NO.
370	2009-015 T	COOK	20	20
TC-10			CONTRACT NO. 60G15	
FED. ROAD DIST. NO. 1 ILLINOIS FED. AID PROJECT				