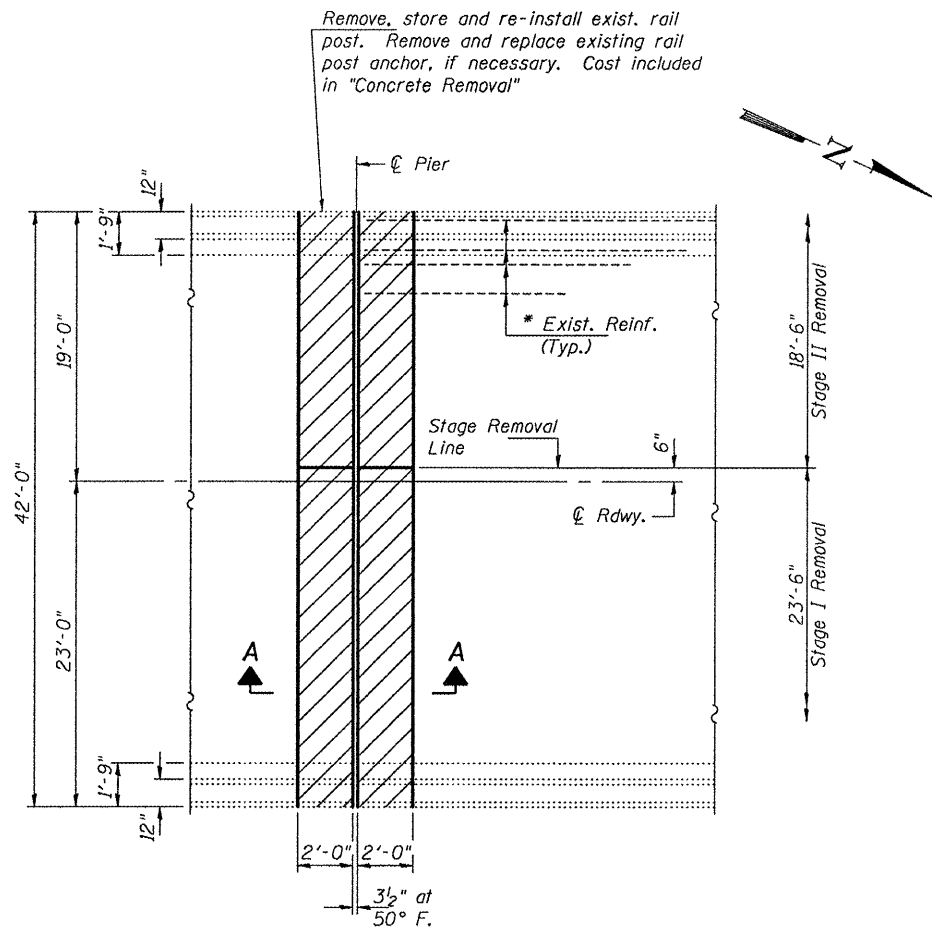
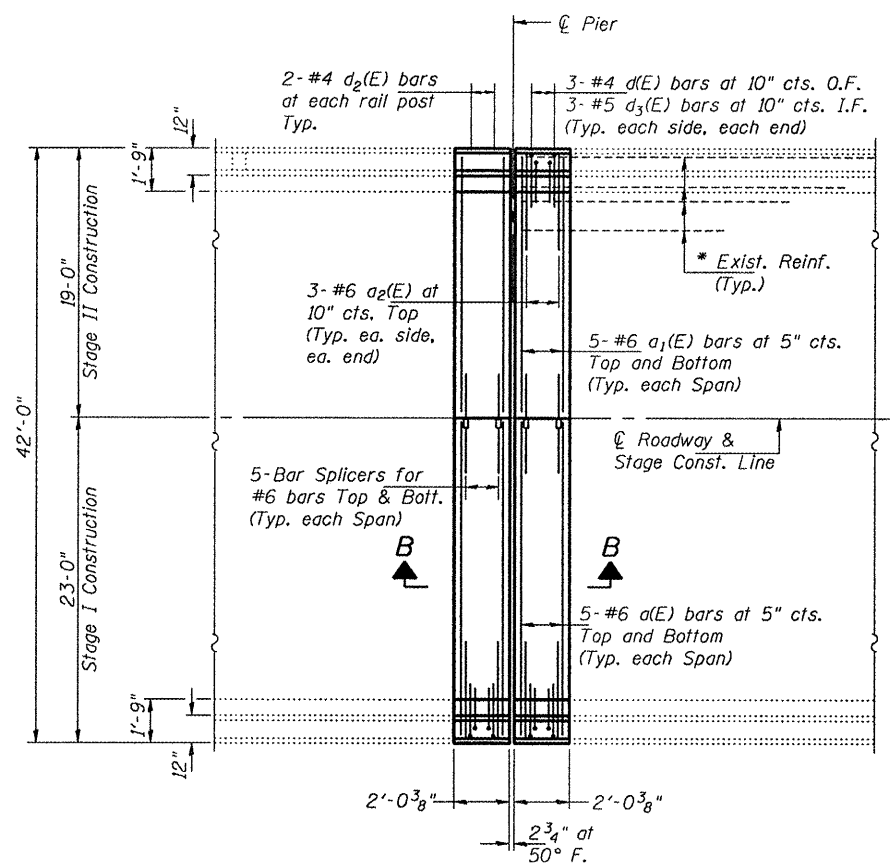


STATE OF ILLINOIS  
DEPARTMENT OF TRANSPORTATION

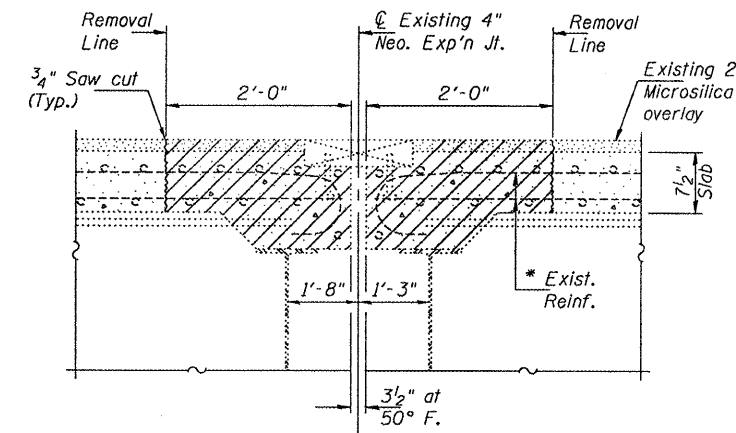


PARTIAL PLAN SHOWING CONCRETE REMOVAL

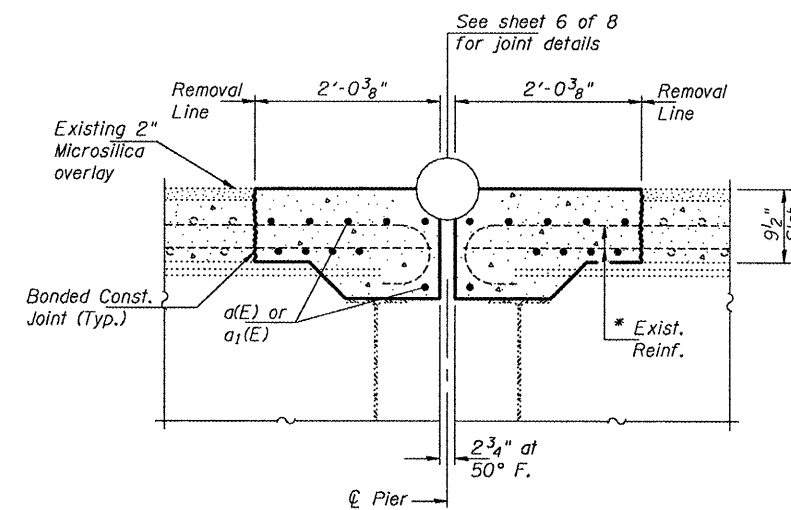


PARTIAL PLAN SHOWING CONCRETE REPLACEMENT

\* Existing longitudinal reinforcement extending into the removal area shall be cleaned, straightened and incorporated into the new construction. Any reinforcement bars that are damaged during concrete removal shall be replaced with an approved bar splicer or anchorage system. Cost shall be included with Concrete Removal.



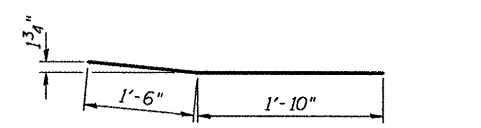
SECTION A-A



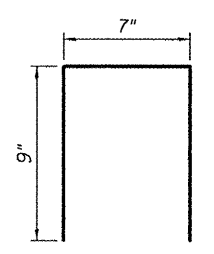
SECTION B-B

BILL OF MATERIAL

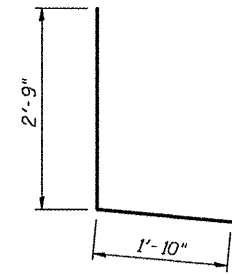
Bar	No.	Size	Length	Shape
a(E)	100	#6	21'-6"	—
a1(E)	100	#6	17'-6"	—
a2(E)	60	#6	4'-0"	—
d(E)	60	#4	4'-7"	L
d2(E)	12	#4	2'-1"	┐
d3(E)	60	#5	3'-7"	┐
Concrete Removal			Cu. Yd.	42.7
Concrete Superstructure			Cu. Yd.	42.7
Reinforcement Bars, Epoxy Coated			Pounds	6,640



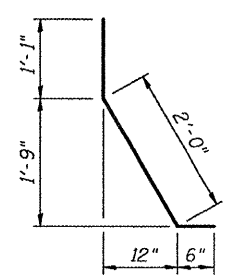
BAR a2(E)



BAR d2(E)



BAR d(E)



BAR d3(E)

PIERS 4, 6, 9, 12 AND 18

JOINT DETAILS

SN 016-2467

DESIGNED	A.T.H.
CHECKED	G.G.E.
DRAWN	Drew Christopher
CHECKED	A.T.H. G.G.E.

EXAMINED	May 3, 2010
PASSED	Carl Proyer ENGINEER OF STRUCTURAL SERVICES
	Ralph E. Anderson ENGINEER OF BRIDGES AND STRUCTURES

SHEET NO. 4	F.A.P. RTE.	SECTION	COUNTY	TOTAL SHEETS	SHEET NO.
	330	2009-1331	Cook	28	9
8 SHEETS	FED. ROAD DIST. NO. ILLINOIS		CONTRACT NO. 60H89		
FED. AID PROJECT					