

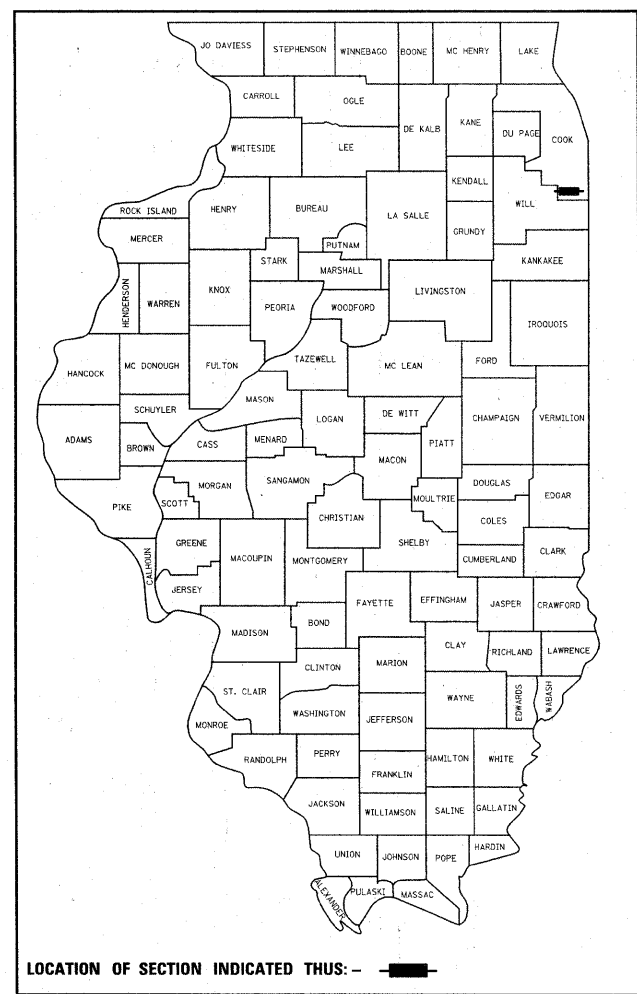
F.A.P. RTE.	SECTION	COUNTY	TOTAL SHEETS	SHEET NO.
353	23-N-3	COOK	38	1
FED. ROAD DIST. NO.		ILLINOIS	CONTRACT NO. 60I49	

D -91-048-10

STATE OF ILLINOIS
DEPARTMENT OF TRANSPORTATION
DIVISION OF HIGHWAYS

**PROPOSED
HIGHWAY PLANS**

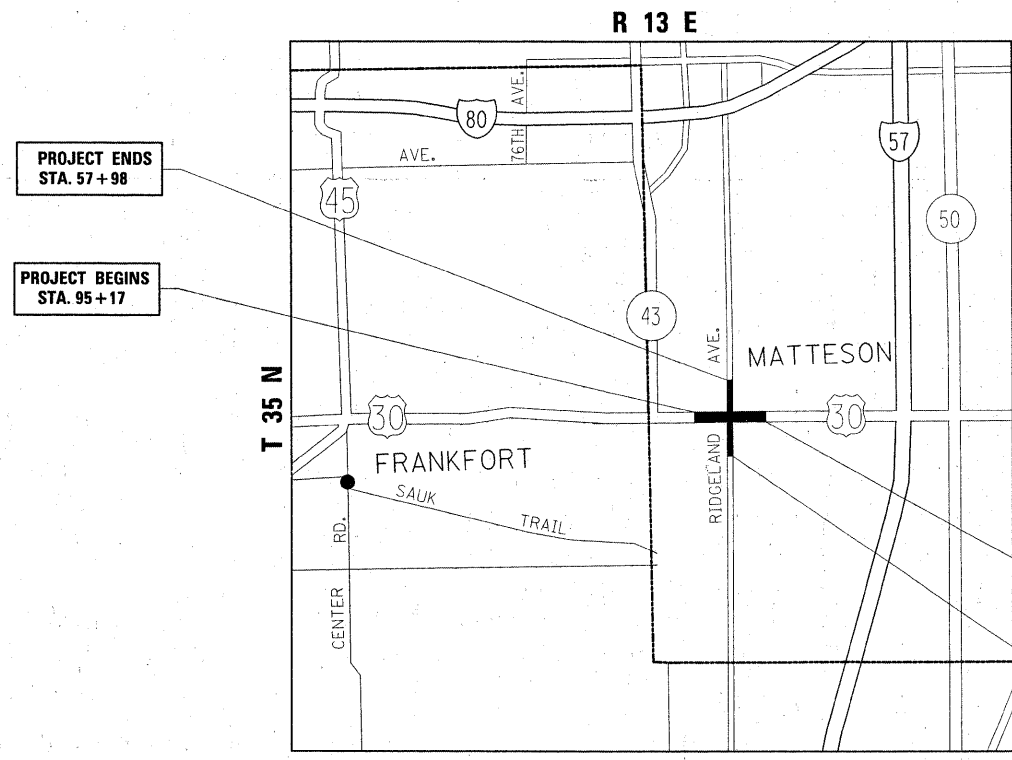
FAP 353 (US 30)
AT RIDGELAND AVE.
SECTION: 23-N-3
INTERSECTION IMPROVEMENT AND
TRAFFIC SIGNAL MODERNIZATION
PROJECT: F-HPP-0353(017)
COOK COUNTY
C-91-048-10



LOCATION OF SECTION INDICATED THUS: - ■ -

FOR INDEX OF SHEETS, SEE SHEET NO. 2

THE PROJECT IS LOCATED IN
THE VILLAGE OF MATTESON

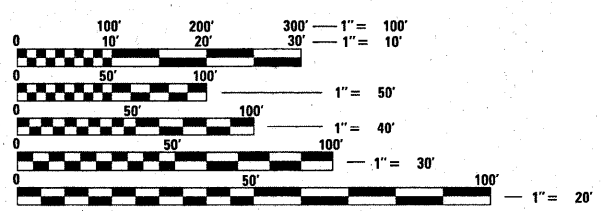


TRAFFIC DATA

US 30, 2007 ADT = 19,000
RIDGELAND AVE., 2007 ADT = 4,200
POSTED SPEED LIMIT = 45 MPH

PROJECT ENDS
STA. 54+88

PROJECT BEGINS
STA. 42+03



FULL SIZE PLANS HAVE BEEN PREPARED USING STANDARD ENGINEERING SCALES. REDUCED SIZED PLANS WILL NOT CONFORM TO STANDARD SCALES. IN MAKING MEASUREMENTS ON REDUCED PLANS, THE ABOVE SCALES MAY BE USED.

J.U.L.I.E.
JOINT UTILITY LOCATION INFORMATION FOR EXCAVATION
1-800-892-0123
OR 811

PROJECT ENGINEER DAN WILGREEN (847) 705-4240
PROJECT MANAGER KEN ENG (847) 705-4247

GROSS & NET LENGTH OF PROJECT = 2,566 LINEAL FEET = 0.49 MILE

CONTRACT NO. 60I49

STATE OF ILLINOIS
DEPARTMENT OF TRANSPORTATION
DIVISION OF HIGHWAYS

SUBMITTED MARCH 12, 2010

Diana M. O'Keefe
DEPUTY DIRECTOR OF HIGHWAYS, REGION ENGINEER

May 7 2010
Scott E. Stitt, P.E.
acting ENGINEER OF DESIGN AND ENVIRONMENT

May 7 2010
Christine M. Reed
DIRECTOR OF HIGHWAYS, CHIEF ENGINEER

PRINTED BY THE AUTHORITY
OF THE STATE OF ILLINOIS